

LEA Name : Avon Grove SD
Address : 375 S Jennersville Road
West Grove , PA 19390

County : Chester
AUN Number : 124150503
LEA Type : SD

Annual Financial Report Accuracy Certification Statement

For Fiscal Year Ending
6/30/2018

Pennsylvania Department of Education
&
Office of Comptroller Operations

PDE-2056: Intermediate Unit
PDE-2057: School District, AVTS/CTC, Charter School,
and Special Program Jointure

CERTIFICATION: By signing this page I agree that the electronic data submitted is a complete and accurate statement of the financial operations and status of the local education agency for the fiscal year. It has been prepared in accordance with generally accepted accounting principles and established Commonwealth of PA reporting guidelines.



Chief School Administrator Signature

Date

10/31/18



Board Secretary Signature

Date

10/31/18

Daniel R Carsley

(610)869-2441

Ext :50200

Contact Person

Contact Person Telephone Number

dcarsley@avongrove.org

(610)869-8651

Contact Person E-mail Address

Contact Person Fax Number

Audit Certification
Annual Financial Report:
For Fiscal Year Ending **6/30/2018**
(Pursuant to PA School Code Section 218(b))

LEA Name : Avon Grove SD
AUN Number : 124150503
County : Chester


Audit Certification Due: 12/31/2018

This certification is applicable to the Annual Financial Report data submitted through the Consolidated Financial Reporting System on: November 19, 2018
Date

Auditing Firm: Barbacane, Thornton & Company LLP
200 Springer Building
3411 Silverside Road
Wilmington, DE 19810

Auditor Contact Name: Jeffrey A. Kowalczyk, CPA, CFE, CGAP
Auditor Phone: (302) 468-4036
Auditor E-mail: JKowalczyk@btcpa.com

CERTIFICATION: By signing this page I agree that the financial statements of the school have been properly audited as noted above pursuant to Article XXIV, and in the auditor's professional opinion, the Annual Financial Report (PDE-2057) submitted on the date referenced is materially consistent with the audited financial statements.

Chief School Administrator


Signature

11/19/18
Date

Board Secretary


Signature

11/19/18
Date

Daniel R Carsley

Contact Person

dcarsley@avongrove.org

Contact Person E-mail Address

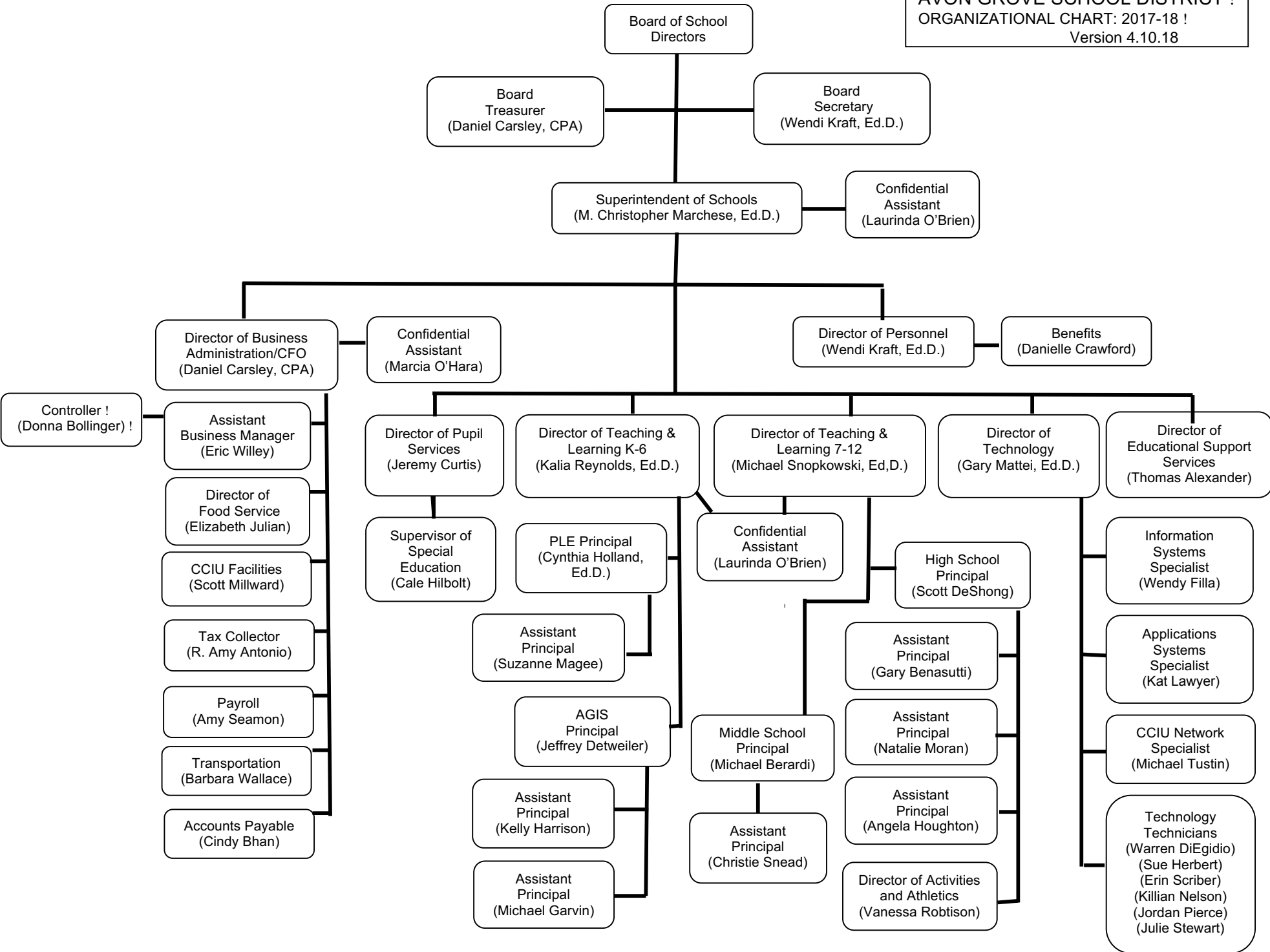
(610)869-2441 Ext :50200

Contact Person Telephone Number

(610)869-8651

Contact Person Fax Number

AVON GROVE SCHOOL DISTRICT !
ORGANIZATIONAL CHART: 2017-18 !
 Version 4.10.18



Amounts Expressed in Whole Dollars	<u>General Fund</u> <u>(10)</u>	<u>Public Purpose Trust</u> <u>(27)</u>	<u>Other Compt Approved</u> <u>(28)</u>	<u>Athletic / Activity</u> <u>(29)</u>	<u>Capital Reserve (690.</u> <u>1850)</u> <u>(31)</u>
Assets And Deferred Outflows Of Resources					
Assets					
0100 Cash and Cash Equivalents	3,517,589				
0110 Investments	23,734,390				
0120 Taxes Receivable	1,341,600				
0130 Due From Other Funds	190,082				
0141 Due From Other Governments	2,654,318				
0142 State Revenue Receivable					
0143 Federal Revenue Receivable					
0145 Other Intergovernmental Revenue Receivable					
0146 Due from Primary Government					
0147 Due from Component Unit					
0150 Other Receivables	111,196				
0170 Inventories					
0180 Prepaid Expenses (Expenditures)	913,726				
0190 Other Current Assets					
Total Assets	\$32,462,901				
0910 Deferred Outflows of Resources					
Total Assets And Deferred Outflows Of Resources	\$32,462,901				

Amounts Expressed in Whole Dollars

	<u>Capital Reserve (1431)</u> <u>(32)</u>	<u>Other Capital Projects</u> <u>Fund</u> <u>(39)</u>	<u>Debt Service</u> <u>(40)</u>	<u>Permanent</u> <u>(90)</u>	<u>Total Governmental</u> <u>Funds</u>
Assets And Deferred Outflows Of Resources					
Assets					
0100 Cash and Cash Equivalents					3,517,589
0110 Investments		3,207,599			26,941,989
0120 Taxes Receivable					1,341,600
0130 Due From Other Funds					190,082
0141 Due From Other Governments					2,654,318
0142 State Revenue Receivable					
0143 Federal Revenue Receivable					
0145 Other Intergovernmental Revenue Receivable					
0146 Due from Primary Government					
0147 Due from Component Unit					
0150 Other Receivables					111,196
0170 Inventories					
0180 Prepaid Expenses (Expenditures)					913,726
0190 Other Current Assets					
Total Assets		\$3,207,599			\$35,670,500
0910 Deferred Outflows of Resources					
Total Assets And Deferred Outflows Of Resources		\$3,207,599			\$35,670,500

Amounts Expressed in Whole Dollars

	<u>General Fund</u> <u>(10)</u>	<u>Public Purpose Trust</u> <u>(27)</u>	<u>Other Compt Approved</u> <u>(28)</u>	<u>Athletic / Activity</u> <u>(29)</u>	<u>Capital Reserve (690.</u> <u>1850)</u> <u>(31)</u>
Liabilities And Deferred Inflows Of Resources And Fund Balances					
Liabilities					
0400 Due to Other Funds	434,831				
0411 Due to Other Governments					
0412 Due to Primary Government					
0413 Due to Component Unit					
0420 Accounts Payable	2,026,435				
0430 Contracts Payable					
0440 Current Portion of Long-Term Debt					
0450 Short-Term Payables					
0461 Accrued Salaries and Benefits	6,809,977				
0462 Payroll Deductions and Withholding					
0480 Unearned Revenues	311,525				
0490 Other Current Liabilities	55,524				
Total Liabilities	\$9,638,292				
0950 Deferred Inflows of Resources	1,107,096				
Fund Balances					
0810 Nonspendable Fund Balance	913,726				
0820 Restricted Fund Balance					
0830 Committed Fund Balance	7,612,908				
0840 Assigned Fund Balance	9,063,103				
0850 Unassigned Fund Balance	4,127,776				
Total Fund Balances	\$21,717,513				
Total Liabilities, Deferred Inflows Of Resources And Fund Balances	\$32,462,901				

Amounts Expressed in Whole Dollars

	<u>Capital Reserve (1431)</u> <u>(32)</u>	<u>Other Capital Projects</u> <u>Fund</u> <u>(39)</u>	<u>Debt Service</u> <u>(40)</u>	<u>Permanent</u> <u>(90)</u>	<u>Total Governmental</u> <u>Funds</u>
Liabilities And Deferred Inflows Of Resources And Fund Balances					
Liabilities					
0400 Due to Other Funds		40,532			475,363
0411 Due to Other Governments					
0412 Due to Primary Government					
0413 Due to Component Unit					
0420 Accounts Payable		10,519			2,036,954
0430 Contracts Payable					
0440 Current Portion of Long-Term Debt					
0450 Short-Term Payables					
0461 Accrued Salaries and Benefits					6,809,977
0462 Payroll Deductions and Withholding					
0480 Unearned Revenues					311,525
0490 Other Current Liabilities					55,524
Total Liabilities		\$51,051			\$9,689,343
0950 Deferred Inflows of Resources					1,107,096
Fund Balances					
0810 Nonspendable Fund Balance					913,726
0820 Restricted Fund Balance		3,156,548			3,156,548
0830 Committed Fund Balance					7,612,908
0840 Assigned Fund Balance					9,063,103
0850 Unassigned Fund Balance					4,127,776
Total Fund Balances		\$3,156,548			\$24,874,061
Total Liabilities, Deferred Inflows Of Resources And Fund Balances		\$3,207,599			\$35,670,500

Amounts Expressed in Whole Dollars	<u>General Fund</u> <u>(10)</u>	<u>Public Purpose Trust</u> <u>(27)</u>	<u>Other Compt Approved</u> <u>(28)</u>	<u>Athletic / Activity</u> <u>(29)</u>	<u>Capital Reserve (690.</u> <u>1850)</u> <u>(31)</u>
Revenues					
6000 Revenue from Local Sources	56,801,706				
7000 Revenue from State Sources	31,384,469				
8000 Revenue from Federal Sources	971,828				
Total Revenues	\$89,158,003				
Expenditures					
1000 Instruction	58,507,187				
2000 Support Services	26,044,657				
3000 Operation of Non-Instructional Services	1,187,727				
4000 Facilities Acquisition, Construction and Improvement Services	22,382				
5110 Debt Service	3,270,365				
5130 Refund of Prior Year Revenues / Receipts					
Total Expenditures	\$89,032,318				
Excess (Deficiency) Of Revenues Over Expenditures	\$125,685				
Other Financing Sources (Uses)					
9110 Face Value of Bonds Issued					
9120 Proceeds from Refunding of Bonds					
9130 Bond Premiums					
9200 Proceeds from Extended-Term Financing					
9300 Interfund Transfers - IN					
9400 Sale of or Compensation for Loss of Fixed Assets	198,961				
9710 Transfers from Component Units					
9720 Transfers from Primary Governments					
9910 Other Financing Sources Not Listed in the 9000 Series					
9990 Insurance Recoveries					
5120 Debt Service – Refunded Bonds					
5150 Bond Discounts					
5200 Interfund Transfers – Out	1,850,000				
5300 Transfers Out to Component Units/Primary Governments					
Total Other Financing Sources (Uses)	(\$1,651,039)				

Amounts Expressed in Whole Dollars	<u>Capital Reserve (1431)</u> <u>(32)</u>	<u>Other Capital Projects</u> <u>Fund</u> <u>(39)</u>	<u>Debt Service</u> <u>(40)</u>	<u>Permanent</u> <u>(90)</u>	<u>Total Governmental</u> <u>Funds</u>
Revenues					
6000 Revenue from Local Sources		51,005			56,852,711
7000 Revenue from State Sources					31,384,469
8000 Revenue from Federal Sources					971,828
Total Revenues		\$51,005			\$89,209,008
Expenditures					
1000 Instruction					58,507,187
2000 Support Services		270,695			26,315,352
3000 Operation of Non-Instructional Services					1,187,727
4000 Facilities Acquisition, Construction and Improvement Services		782,324			804,706
5110 Debt Service					3,270,365
5130 Refund of Prior Year Revenues / Receipts					
Total Expenditures		\$1,053,019			\$90,085,337
Excess (Deficiency) Of Revenues Over Expenditures		(\$1,002,014)			(\$876,329)
Other Financing Sources (Uses)					
9110 Face Value of Bonds Issued					
9120 Proceeds from Refunding of Bonds					
9130 Bond Premiums					
9200 Proceeds from Extended-Term Financing			56,835		56,835
9300 Interfund Transfers - IN			1,850,000		1,850,000
9400 Sale of or Compensation for Loss of Fixed Assets					198,961
9710 Transfers from Component Units					
9720 Transfers from Primary Governments					
9910 Other Financing Sources Not Listed in the 9000 Series					
9990 Insurance Recoveries					
5120 Debt Service – Refunded Bonds					
5150 Bond Discounts					
5200 Interfund Transfers – Out					1,850,000
5300 Transfers Out to Component Units/Primary Governments					
Total Other Financing Sources (Uses)			\$1,906,835		\$255,796

Amounts Expressed in Whole Dollars	<u>General Fund</u> <u>(10)</u>	<u>Public Purpose Trust</u> <u>(27)</u>	<u>Other Compt Approved</u> <u>(28)</u>	<u>Athletic / Activity</u> <u>(29)</u>	<u>Capital Reserve</u> (690. <u>1850)</u> <u>(31)</u>
Special And Extraordinary Items					
9920 Special Items – Gains					
9930 Extraordinary Items – Gains					
5520 Special Items – Losses					
5530 Extraordinary Items – Losses					
Net Change In Fund Balances	(\$1,525,354)				
Fund Balance					
0001 Fund Balance - Beginning of Fiscal Year					
		23,242,867			
Fund Balance - End Of Year	\$21,717,513				

Amounts Expressed in Whole Dollars	<u>Capital Reserve (1431)</u> <u>(32)</u>	<u>Other Capital Projects</u> <u>Fund</u> <u>(39)</u>	<u>Debt Service</u> <u>(40)</u>	<u>Permanent</u> <u>(90)</u>	<u>Total Governmental</u> <u>Funds</u>
Special And Extraordinary Items					
9920 Special Items – Gains					
9930 Extraordinary Items – Gains					
5520 Special Items – Losses					
5530 Extraordinary Items – Losses					
Net Change In Fund Balances		\$904,821			(\$620,533)
Fund Balance					
0001 Fund Balance - Beginning of Fiscal Year		2,251,725			25,494,592
Fund Balance - End Of Year		\$3,156,546			\$24,874,059

Amounts Expressed in Whole Dollars	<u>Food Service</u> <u>(51)</u>	<u>Child Care</u> <u>Operations</u> <u>(52)</u>	<u>Other Enterprise</u> <u>(58)</u>	<u>TOTAL</u>	<u>Internal Service</u> <u>(60)</u>
Assets And Deferred Outflows Of Resources					
Current Assets					
0100 Cash and Cash Equivalents	188,231			188,231	
0110 Investments	283,005			283,005	3,279,551
0130 Due From Other Funds					434,831
0141 Due From Other Governments	147,455			147,455	
0142 State Revenue Receivable					
0143 Federal Revenue Receivable					
0146 Due from Primary Government					
0147 Due from Component Unit					
0150 Other Receivables	3,256			3,256	
0170 Inventories	55,546			55,546	
0180 Prepaid Expenses (Expenditures)					
0190 Other Current Assets					142,000
Total Current Assets	\$677,493			\$677,493	\$3,856,382
Noncurrent Assets					
0211 Land					
0212 Site Improvements (Net)					
0220 Buildings and Building Improvements (Net)					
0230 Machinery, Equipment and Furniture (Net)	47,846			47,846	
0250 Construction in Progress					
0260 Long Term Prepayments					
0290 Other Noncurrent Assets					
Total Noncurrent Assets	\$47,846			\$47,846	
0910 Deferred Outflows of Resources	328,717			328,717	
Total Assets And Deferred Outflows Of Resources	\$1,054,056			\$1,054,056	\$3,856,382

Amounts Expressed in Whole Dollars	<u>Food Service</u> <u>(51)</u>	<u>Child Care</u> <u>Operations</u> <u>(52)</u>	<u>Other Enterprise</u> <u>(58)</u>	<u>TOTAL</u>	<u>Internal Service</u> <u>(60)</u>
Liabilities And Deferred Inflows Of Resources And Net Position					
Current Liabilities					
0400 Due to Other Funds	149,550			149,550	
0411 Due to Other Governments					
0413 Due to Component Unit					
0420 Accounts Payable					502,950
0430 Contracts Payable					
0440 Current Portion of Long-Term Debt					
0450 Short-Term Payables					
0461 Accrued Salaries and Benefits	21,140			21,140	
0462 Payroll Deductions and Withholding					
0480 Unearned Revenues	48,945			48,945	
0490 Other Current Liabilities					
Total Current Liabilities	\$219,635			\$219,635	\$502,950
Noncurrent Liabilities					
0510 Bonds Payable					
0520 Extended-Term Financing Agreements Payable					
0530 Lease-Purchase Obligations					
0540 Accumulated Compensated Absences					
0550 Authority Lease Obligations					
0560 Other Post-Employment Benefits (OPEB)	82,123			82,123	
0570 Net Pension Liability	1,990,798			1,990,798	
0599 Other Noncurrent Liabilities					
Total Noncurrent Liabilities	\$2,072,921			\$2,072,921	
Total Liabilities	\$2,292,556			\$2,292,556	\$502,950
0950 Deferred Inflows of Resources	61,415			61,415	
Net Position					
0791 Net Investment in Capital Assets	47,846			47,846	
0008 Restricted Net Position (0792 – 0798)					
0799 Unrestricted Net Position	(1,347,761)			(1,347,761)	3,353,432
Total Net Position	(\$1,299,915)			(\$1,299,915)	\$3,353,432
Total Liabilities And Deferred Inflows Of Resources And Net Position	\$1,054,056			\$1,054,056	\$3,856,382

Amounts Expressed in Whole Dollars	<u>Food Service</u> <u>(51)</u>	<u>Child Care Operations</u> <u>(52)</u>	<u>Other Enterprise</u> <u>(58)</u>	<u>TOTAL</u>	<u>Internal Service</u> <u>(60)</u>
Operating Revenues					
6600 Food Service Revenue	983,797			983,797	
0071 Charges for Services					
0072 Other Operating Revenue					6,284,665
Total Operating Revenues	\$983,797			\$983,797	\$6,284,665
Operating Expenses					
100 Personnel Services – Salaries	578,834			578,834	
200 Personnel Services – Employee Benefits	455,119			455,119	5,978,702
300 Purchased Professional and Technical Services	1,700			1,700	
400 Purchased Property Services	33,005			33,005	
500 Other Purchased Services	3,869			3,869	
600 Supplies	979,006			979,006	
740 Depreciation	10,808			10,808	
810 Dues and Fees	951			951	
890 Miscellaneous Expenditures					
Total Operating Expenses	\$2,063,292			\$2,063,292	\$5,978,702
Operating Income (Loss)	(\$1,079,495)			(\$1,079,495)	\$305,963
Non Operating Revenues (Expenses)					
6500 Earnings on Investments	3,784			3,784	42,645
6920 Contributions and Donations from Private Sources					
6930 Gains or Losses on Sale of Fixed Assets	(712)			(712)	
6991 Refunds of a Prior Year Expenditure					
7000 Revenue from State Sources	166,083			166,083	
8000 Revenue from Federal Sources	876,773			876,773	
820 Claims and Judgments Against the LEA					
830 Interest					
TOTAL Non Operating Revenues (Expenses)	\$1,045,928			\$1,045,928	\$42,645
Income (Loss) Before Contributions And Transfers	(\$33,567)			(\$33,567)	\$348,608

Amounts Expressed in Whole Dollars	<u>Food Service</u> <u>(51)</u>	<u>Child Care Operations</u> <u>(52)</u>	<u>Other Enterprise</u> <u>(58)</u>	<u>TOTAL</u>	<u>Internal Service</u> <u>(60)</u>
Contributions, Transfers, and Special and Extraordinary Items					
5200 Interfund Transfers – Out					
5300 Transfers Out to Component Units/Primary Governments					
5520 Special Items – Losses					
5530 Extraordinary Items – Losses					
9300 Interfund Transfers - IN					
9500 Capital Contributions					
9700 Transfers IN From Component Units/Primary Governments					
9920 Special Items – Gains					
9930 Extraordinary Items – Gains					
Change In Net Position	(\$33,567)			(\$33,567)	\$348,608
0002 Net Position - Beginning of Fiscal Year	(1,266,348)			(1,266,348)	3,004,824
0003 Accounting Changes / Residual Equity Transfers					
Net Position - End Of Year	(\$1,299,915)			(\$1,299,915)	\$3,353,432

Amounts Expressed in Whole Dollars	<u>Food Service</u> <u>(51)</u>	<u>Child Care Operations</u> <u>(52)</u>	<u>Other Enterprise</u> <u>(58)</u>	<u>TOTAL</u>	<u>Internal Service(60)</u>
Cash Flows From Operating Activities					
0011 Cash Receipts From Users	990,528			990,528	
0012 Cash Receipts From Assessments Made to Other Funds					6,051,364
0013 Cash Receipts From Earnings on Investments					
0014 Cash Receipts From Other Operating Revenue					
0015 Cash Payments To Employees For Services	922,821			922,821	
0016 Cash Payments For Insurance Claims					6,302,894
0017 Cash Payments To Suppliers For Goods and Services	915,010			915,010	
0018 Cash Payments For Other Operating Expenses					
Net Cash Provided By (Used For) Operating Activities	(\$847,303)			(\$847,303)	(\$251,530)
Cash Flows From Non-Capital Financing Activities					
0021 Receipts From Local Sources - 6000					
0022 Receipts From State Sources - 7000	164,488			164,488	
0023 Receipts From Federal Sources -8000	741,381			741,381	
0024 Notes and Loans Received (Repaid)					
0025 Interest Paid on Notes/Loans - 5100-830					
0026 Operating Transfers In (Out)/Residual Equity Trans					
0027 Operating Transfers In (Out) Primary Government / Comp Unit					
0028 Receipts From Refund of Prior Year Expenditures - 6991					
0029 Special and Extraordinary Gains (losses)					
0030 Receipts from Insurance Recoveries -9990					
Net Cash Prov By (Used for) Non-Capital Financing Activities	\$905,869			\$905,869	
Cash Flows From Capital and Related Financing Activities					
0031 Payments For Fac Acq, Const, and Imp - 4000					
0032 Gain / (Loss) on Sale of Fixed Assets - 6930					
0033 Proceeds From Extended Term Financing - 9200					
0034 Principal Paid on Financing Agreements					
0035 Interest Paid on Financing Agreements - 5100-830					
0036 (Inc) Dec in Contributed Capital					
Net Cash Prov By (Used for) Capital and Related Financing Activities					
Cash Flows From Investing Activities					
0041 Earnings on Investments - 6500	3,784			3,784	42,645
0042 Purchase of Inv Securities / Deposits to Inv Pools					
0043 Receipts From Investment Pool Withdrawals					
0044 Proceeds from Sale and Maturity of Inv Securities	(3,621)			(3,621)	208,885

LEA : 124150503 Avon Grove SD

Printed 11/2/2018 8:02:30 AM

0045 Loans Received (Paid)

Net Cash Prov By (Used for) Investing Activities	\$163	\$163	\$251,530
---	--------------	--------------	------------------

	<u>Food Service</u> <u>(51)</u>	<u>Child Care Operations</u> <u>(52)</u>	<u>Other Enterprise</u> <u>(58)</u>	<u>TOTAL</u>	<u>Internal Service</u> <u>(60)</u>
Net Increase (Decrease) in Cash Flows	58,729			58,729	
0004 Cash and Cash Equivalents Beginning of Year	129,502			129,502	
Cash and Cash Equivalents at Year End	\$188,231			\$188,231	
<hr/>					
Reconciliation of Operating Income (Loss) To Net Cash Provided by (Used For) Operating Activities					
0005 Operating Income (Loss) per REP	(1,079,495)			(1,079,495)	305,963
Adjustments					
0051 Depreciation and Net Amortization	10,808			10,808	
0052 Provision for Uncollectible Accounts					
0053 Other Adjustments	108,662			108,662	(142,000)
Effect of Changes in Assets, Liabilities, Deferred Outflows and Deferred Inflows					
0054 (Inc) Dec In Accounts Receivable (0120-0150)	554			554	
0055 Advances to Other Funds (0160)	70,329			70,329	(233,301)
0056 (Inc) Dec in Inventories (0170)	(3,816)			(3,816)	
0057 (Inc) Dec in Prepaid Expenses (0180)					
0058 (Inc) Dec in Other Current or Noncurrent Assets					
0064 Deferred Outflows (0910)	54,172			54,172	
0059 Inc (Dec) in Accounts Payable (0400-0450)	(1,325)			(1,325)	(182,192)
0060 Inc (Dec) in Accrued Salaries/Benefits (0461)	15,556			15,556	
0065 Inc (Dec) in Net Pension Liabilities (0570)	(65,947)			(65,947)	
0066 Inc (Dec) in Other Postemp Benefit Oblig (0560)	(7,266)			(7,266)	
0061 Inc (Dec) in Payroll Deductions/Withholding (0462)					
0062 Inc (Dec) in Unearned Revenue (0480)	6,177			6,177	
0063 Inc (Dec) in Other Current or Noncurrent Liabilities					
0067 Deferred Inflows (0950)	44,288			44,288	
Total Adjustments	\$232,192			\$232,192	(\$557,493)
Cash Provided By (Used for) Total	(\$847,303)			(\$847,303)	(\$251,530)

COMBINED STATEMENT OF CASH FLOWS
SCHEDULE OF NONCASH INVESTING, CAPITAL, AND FINANCING ACTIVITIES

Explanation of Transaction and Balance Sheet Effect	Amount
Total	

LEA : 124150503 Avon Grove SD

Printed 11/2/2018 8:02:31 AM

Amounts Expressed in Whole Dollars

Private Purpose Trust
(71)

Investment Trust
(72)

Pension Trust
(73)

Activity
(81)

Assets And Deferred Outflows Of Resources

Assets

0100 Cash and Cash Equivalents				161,191
0110 Investments				
0130 Due From Other Funds				
0147 Due from Component Unit				
0150 Other Receivables				7
0170 Inventories				
0180 Prepaid Expenses (Expenditures)				
0190 Other Current Assets				
0220 Buildings and Building Improvements (Net)				
0230 Machinery, Equipment and Furniture (Net)				

Total Assets **\$161,198**

0910 Deferred Outflows of Resources

Total Assets And Deferred Outflows Of Resources **\$161,198**

LEA : 124150503 Avon Grove SD

Printed 11/2/2018 8:02:31 AM

Amounts Expressed in Whole Dollars

	<u>Other Agency</u> <u>(89)</u>	<u>Discrete Component Units</u> <u>(98)</u>	<u>Discrete Component Units</u> <u>(99)</u>	<u>Total Fiduciary Funds</u>
Assets And Deferred Outflows Of Resources				
Assets				
0100 Cash and Cash Equivalents				161,191
0110 Investments				
0130 Due From Other Funds				
0147 Due from Component Unit				
0150 Other Receivables				7
0170 Inventories				
0180 Prepaid Expenses (Expenditures)				
0190 Other Current Assets				
0220 Buildings and Building Improvements (Net)				
0230 Machinery, Equipment and Furniture (Net)				
Total Assets				\$161,198
0910 Deferred Outflows of Resources				
Total Assets And Deferred Outflows Of Resources				\$161,198

LEA : 124150503 Avon Grove SD

Printed 11/2/2018 8:02:31 AM

Amounts Expressed in Whole Dollars	<u>Private Purpose Trust</u> (71)	<u>Investment Trust</u> (72)	<u>Pension Trust</u> (73)	<u>Activity</u> (81)
Liabilities, Deferred Inflows Of Resources And Net Position				
Liabilities				
0400 Due to Other Funds				
0411 Due to Other Governments				
0412 Due to Primary Government				
0413 Due to Component Unit				
0420 Accounts Payable				161,198
0430 Contracts Payable				
0450 Short-Term Payables				
0461 Accrued Salaries and Benefits				
0462 Payroll Deductions and Withholding				
0480 Unearned Revenues				
0490 Other Current Liabilities				
Total Liabilities				\$161,198
0950 Deferred Inflows of Resources				
Net Position				
0791 Net Investment in Capital Assets				
0009 Restricted Net Position (0792 – 0798)				
0799 Unrestricted Net Position				
Total Net Position				\$161,198
Total Liabilities, Deferred Inflows Of Resources And Net Position				\$161,198

LEA : 124150503 Avon Grove SD

Printed 11/2/2018 8:02:31 AM

Amounts Expressed in Whole Dollars	<u>Other Agency</u> (89)	<u>Discrete Component Units</u> (98)	<u>Discrete Component Units</u> (99)	<u>Total Fiduciary Funds</u>
Liabilities, Deferred Inflows Of Resources And Net Position				
Liabilities				
0400 Due to Other Funds				
0411 Due to Other Governments				
0412 Due to Primary Government				
0413 Due to Component Unit				
0420 Accounts Payable				161,198
0430 Contracts Payable				
0450 Short-Term Payables				
0461 Accrued Salaries and Benefits				
0462 Payroll Deductions and Withholding				
0480 Unearned Revenues				
0490 Other Current Liabilities				
Total Liabilities				\$161,198
0950 Deferred Inflows of Resources				
Net Position				
0791 Net Investment in Capital Assets				
0009 Restricted Net Position (0792 – 0798)				
0799 Unrestricted Net Position				
Total Net Position				
Total Liabilities, Deferred Inflows Of Resources And Net Position				\$161,198

	<u>Revenue Reported In Current Year</u>	<u>Current Year Tax Accrual</u>	<u>Prior Year Tax Accrual</u>	<u>Taxes Collected In Current Year</u>
<u>Revenue from Local Sources</u>				
6111 Current Real Estate Taxes	52,224,562.42			52,224,562.42
6112 Interim Real Estate Taxes	266,890.35			266,890.35
6113 Public Utility Realty Taxes	53,107.51			53,107.51
6153 Current Act 511 Real Estate Transfer Taxes	1,035,542.67			1,035,542.67
6411 Delinquent Real Estate Taxes	1,354,706.55			1,354,706.55
6412 Delinquent Interim Real Estate Taxes	35,347.28			35,347.28
6500 Earnings on Investments	546,102.59			
6700 Revenues from LEA Activities	494,515.85			
6832 Federal IDEA Revenue Received as Pass Through	535,211.00			
6910 Rentals	77,977.89			
6920 Contributions and Donations from Private Sources	86,800.01			
6941 Regular Day School Tuition	1,236.80			
6942 Summer School Tuition	7,825.00			
6991 Refunds of a Prior Year Expenditure	5,736.11			
6992 Energy Efficiency Revenues and Incentives	45,691.56			
6999 Other Revenues Not Specified Above	30,452.82			
TOTAL Revenue from Local Sources	\$56,801,706.41			\$54,970,156.78

**Revenue Reported
In Current Year**

Revenue from State Sources

7110 Basic Education Funding	15,107,702.08		
7160 Tuition for Orphans Subsidy	56,734.19		
7250 Migratory Children	1,423.00		
7271 Special Education funds for School-Aged Pupils	2,709,045.60		
7299 Program Revenues Not Listed Previously in the 7200 Series	631.95		
7311 Pupil Transportation Subsidy	1,885,149.81		
7312 Nonpublic and Charter School Pupil Transportation Subsidy	295,295.00		
7320 Rental and Sinking Fund Payments / Building Reimbursement Subsidy	945,992.04		
7330 Health Services (Medical, Dental, Nurse, Act 25)	102,587.96		
7340 State Property Tax Reduction Allocation	2,673,632.79		
7505 Ready to Learn Block Grant	754,726.00		
7810 State Share of Social Security and Medicare Taxes	1,267,920.88		
7820 State Share of Retirement Contributions	5,583,627.22		
TOTAL Revenue from State Sources	\$31,384,468.52		

**Revenue Reported
In Current Year**

Revenue from Federal Sources

8514 NCLB, Title I - Improving the Academic Achievement of the Disadvantaged	294,336.74		
8515 NCLB, Title II - Preparing, Training and Recruiting High Quality Teachers and Principals	100,208.66		
8516 NCLB, Title III - Language Instruction for Limited English Proficient and Immigrant Students	100,492.01		
8810 School-Based Access Medicaid Reimbursement Program (SBAP) Reimbursements (Access)	469,132.10		
8820 Medical Assistance Reimbursement for Administrative Claiming (Quarterly) Program	7,658.53		
TOTAL Revenue from Federal Sources	\$971,828.04		

	<u>Revenue Reported In Current Year</u>	
<u>Other Financing Sources</u>		
9400 Sale of or Compensation for Loss of Fixed Assets	198,960.50	
TOTAL Other Financing Sources	\$198,960.50	
TOTAL FROM ALL SOURCES	\$89,356,963.47	\$54,970,156.78

Revenue from Local Sources	56,801,706.41
Revenue from State Sources	31,384,468.52
Revenue from Federal Sources	971,828.04
Other Financing Sources	198,960.50
TOTAL FROM ALL SOURCES	\$89,356,963.47

LEA : 124150503 Avon Grove SD

Printed 11/2/2018 8:02:34 AM

General Fund (10)

	<u>Total</u>
1000 Instruction	
100 Personnel Services – Salaries	
100 Personnel Services – Salaries	23,527,689.87
Total Personnel Services – Salaries	\$23,527,689.87
200 Personnel Services – Employee Benefits	
210 Group Insurance – Contracted Provider	83,946.24
220 Social Security Contributions	1,762,014.60
230 PSERS Retirement Contributions	7,634,582.65
250 Unemployment Compensation	14,289.38
260 Workers’ Compensation	134,919.82
270 Group Insurance – Self-Insurance	3,761,400.54
280 Other Post-Employment Benefits (OPEB)	37,831.56
292 Health Savings Accounts	819,485.00
Total Personnel Services – Employee Benefits	\$14,248,469.79
300 Purchased Professional and Technical Services	
322 Professional Educational Services – Ius	5,088,555.08
323 Professional Educational Services – Other Educational Agencies	8,704.87
329 Professional Educational Services – Other	9,120.95
330 Other Professional Services	438,972.87
390 Other Purchased Professional and Technical Services	3,431,313.00
Total Purchased Professional and Technical Services	\$8,976,666.77
400 Purchased Property Services	
430 Repairs and Maintenance Services	13,047.39
440 Rentals	119,969.80
Total Purchased Property Services	\$133,017.19
500 Other Purchased Services	
510 Student Transportation Services	66,223.96
530 Communications	1,584.94
550 Printing and Binding	178.90
561 Tuition To Other School Districts Within the State	96,159.07
562 Tuition To Pennsylvania Charter Schools	10,228,116.71
563 Tuition To Nonpublic Schools	118,476.66
567 Tuition To Approved Private Schools (APS) and PA Chartered Schools for the Deaf and Blind	221,156.36
568 Tuition To Private Residential Rehabilitative Institutions (PRRI) [In-State] and Detention Centers	106,284.45
580 Travel	799.91
Total Other Purchased Services	\$10,838,980.96
600 Supplies	
610 General Supplies	346,037.31
630 Food	713.79
640 Books and Periodicals	88,862.02
650 Supplies & Fees – Technology Related	139,426.35
Total Supplies	\$575,039.47
700 Property	
756 Capitalized Technology Hardware and Equipment – Original	55,963.00

General Fund (10)

1000 Instruction	<u>Total</u>
700 <u>Property</u>	
766 Capitalized Technology Hardware and Equipment – Replacement	40,950.00
Total Property	\$96,913.00
800 <u>Other Objects</u>	
810 Dues and Fees	7,843.00
890 Miscellaneous Expenditures	102,566.93
Total Other Objects	\$110,409.93
Total 1000 Instruction	\$58,507,186.98

LEA : 124150503 Avon Grove SD

Printed 11/2/2018 8:02:34 AM

Page - 3 of 23

General Fund (10)**1100 Regular Programs – Elementary / Secondary**

	<u>Elementary</u>	<u>Secondary</u>	<u>Federal</u>	<u>Total</u>
100 Personnel Services – Salaries				
100 Personnel Services – Salaries	9,606,450.79	10,354,508.62	255,042.44	20,216,001.85
Total Personnel Services – Salaries	\$9,606,450.79	\$10,354,508.62	\$255,042.44	\$20,216,001.85
200 Personnel Services – Employee Benefits				
210 Group Insurance – Contracted Provider	36,278.86	36,342.83	515.95	73,137.64
220 Social Security Contributions	719,318.33	775,523.40	19,267.38	1,514,109.11
230 PSERS Retirement Contributions	3,109,969.34	3,355,908.19	82,634.28	6,548,511.81
250 Unemployment Compensation	5,721.74	5,374.81	549.47	11,646.02
260 Workers' Compensation	54,837.11	59,114.16	1,983.32	115,934.59
270 Group Insurance – Self-Insurance	1,545,948.65	1,577,159.68	18,365.88	3,141,474.21
280 Other Post-Employment Benefits (OPEB)	15,916.09	15,916.08		31,832.17
292 Health Savings Accounts	346,502.50	345,982.50		692,485.00
Total Personnel Services – Employee Benefits	\$5,834,492.62	\$6,171,321.65	\$123,316.28	\$12,129,130.55
300 Purchased Professional and Technical Services				
322 Professional Educational Services – Ius	292,220.98	251,668.92		543,889.90
323 Professional Educational Services – Other Educational Agencies		8,704.87		8,704.87
Total Purchased Professional and Technical Services	\$292,220.98	\$260,373.79		\$552,594.77
400 Purchased Property Services				
430 Repairs and Maintenance Services	787.11	12,260.28		13,047.39
440 Rentals	61,857.36	55,289.18		117,146.54
Total Purchased Property Services	\$62,644.47	\$67,549.46		\$130,193.93
500 Other Purchased Services				
510 Student Transportation Services	27,213.99	38,779.49		65,993.48
530 Communications		72.23		72.23
562 Tuition To Pennsylvania Charter Schools	3,672,230.46	3,672,230.45		7,344,460.91
580 Travel		31.61		31.61
Total Other Purchased Services	\$3,699,444.45	\$3,711,113.78		\$7,410,558.23
600 Supplies				
610 General Supplies	91,200.90	229,335.75	1,226.96	321,763.61
640 Books and Periodicals	54,218.29	29,850.94	2,700.00	86,769.23
650 Supplies & Fees – Technology Related	48,354.24	60,378.62	2,550.00	111,282.86
Total Supplies	\$193,773.43	\$319,565.31	\$6,476.96	\$519,815.70
700 Property				
756 Capitalized Technology Hardware and Equipment – Original	55,963.00			55,963.00
766 Capitalized Technology Hardware and Equipment – Replacement	40,950.00			40,950.00
Total Property	\$96,913.00			\$96,913.00
800 Other Objects				
810 Dues and Fees	201.00	7,242.00		7,443.00
890 Miscellaneous Expenditures	53,496.00	48,265.71		101,761.71
Total Other Objects	\$53,697.00	\$55,507.71		\$109,204.71
Total 1100 Regular Programs – Elementary / Secondary	\$19,839,636.74	\$20,939,940.32	\$384,835.68	\$41,164,412.74

LEA : 124150503 Avon Grove SD

Printed 11/2/2018 8:02:34 AM

Page - 4 of 23

General Fund (10)**1110 Regular Programs**

	<u>Elementary</u>	<u>Secondary</u>	<u>Federal</u>	<u>Total</u>
100 Personnel Services – Salaries				
100 Personnel Services – Salaries	9,606,450.79	10,354,508.62		19,960,959.41
Total Personnel Services – Salaries	\$9,606,450.79	\$10,354,508.62		\$19,960,959.41
200 Personnel Services – Employee Benefits				
210 Group Insurance – Contracted Provider	36,278.86	36,342.83		72,621.69
220 Social Security Contributions	719,318.33	775,523.40		1,494,841.73
230 PSERS Retirement Contributions	3,109,969.34	3,355,908.19		6,465,877.53
250 Unemployment Compensation	5,721.74	5,374.81		11,096.55
260 Workers' Compensation	54,837.11	59,114.16		113,951.27
270 Group Insurance – Self-Insurance	1,545,948.65	1,577,159.68		3,123,108.33
280 Other Post-Employment Benefits (OPEB)	15,916.09	15,916.08		31,832.17
292 Health Savings Accounts	346,502.50	345,982.50		692,485.00
Total Personnel Services – Employee Benefits	\$5,834,492.62	\$6,171,321.65		\$12,005,814.27
300 Purchased Professional and Technical Services				
322 Professional Educational Services – Ius	292,220.98	251,668.92		543,889.90
323 Professional Educational Services – Other Educational Agencies		8,704.87		8,704.87
Total Purchased Professional and Technical Services	\$292,220.98	\$260,373.79		\$552,594.77
400 Purchased Property Services				
430 Repairs and Maintenance Services	787.11	12,260.28		13,047.39
440 Rentals	61,857.36	55,289.18		117,146.54
Total Purchased Property Services	\$62,644.47	\$67,549.46		\$130,193.93
500 Other Purchased Services				
510 Student Transportation Services	27,213.99	38,779.49		65,993.48
530 Communications		72.23		72.23
562 Tuition To Pennsylvania Charter Schools	3,672,230.46	3,672,230.45		7,344,460.91
580 Travel		31.61		31.61
Total Other Purchased Services	\$3,699,444.45	\$3,711,113.78		\$7,410,558.23
600 Supplies				
610 General Supplies	91,200.90	229,335.75		320,536.65
640 Books and Periodicals	54,218.29	29,850.94		84,069.23
650 Supplies & Fees – Technology Related	48,354.24	60,378.62		108,732.86
Total Supplies	\$193,773.43	\$319,565.31		\$513,338.74
700 Property				
756 Capitalized Technology Hardware and Equipment – Original	55,963.00			55,963.00
766 Capitalized Technology Hardware and Equipment – Replacement	40,950.00			40,950.00
Total Property	\$96,913.00			\$96,913.00
800 Other Objects				
810 Dues and Fees	201.00	7,242.00		7,443.00
890 Miscellaneous Expenditures	53,496.00	48,265.71		101,761.71
Total Other Objects	\$53,697.00	\$55,507.71		\$109,204.71
Total 1110 Regular Programs	\$19,839,636.74	\$20,939,940.32		\$40,779,577.06

General Fund (10)

	<u>Elementary</u>	<u>Secondary</u>	<u>Federal</u>	<u>Total</u>
1190 Federally-Funded Regular Programs				
100 Personnel Services – Salaries				
100 Personnel Services – Salaries			255,042.44	255,042.44
Total Personnel Services – Salaries			\$255,042.44	\$255,042.44
200 Personnel Services – Employee Benefits				
210 Group Insurance – Contracted Provider			515.95	515.95
220 Social Security Contributions			19,267.38	19,267.38
230 PSERS Retirement Contributions			82,634.28	82,634.28
250 Unemployment Compensation			549.47	549.47
260 Workers' Compensation			1,983.32	1,983.32
270 Group Insurance – Self-Insurance			18,365.88	18,365.88
Total Personnel Services – Employee Benefits			\$123,316.28	\$123,316.28
600 Supplies				
610 General Supplies			1,226.96	1,226.96
640 Books and Periodicals			2,700.00	2,700.00
650 Supplies & Fees – Technology Related			2,550.00	2,550.00
Total Supplies			\$6,476.96	\$6,476.96
Total 1190 Federally-Funded Regular Programs			\$384,835.68	\$384,835.68

General Fund (10)

1200 Special Programs – Elementary / Secondary

	<u>Elementary</u>	<u>Secondary</u>	<u>Federal</u>	<u>Total</u>
100 Personnel Services – Salaries				
100 Personnel Services – Salaries	1,225,455.03	1,985,703.26	89,855.73	3,301,014.02
Total Personnel Services – Salaries	\$1,225,455.03	\$1,985,703.26	\$89,855.73	\$3,301,014.02
200 Personnel Services – Employee Benefits				
210 Group Insurance – Contracted Provider	5,404.32	5,404.28		10,808.60
220 Social Security Contributions	92,108.65	148,116.85	6,873.96	247,099.46
230 PSERS Retirement Contributions	408,545.21	644,793.55	29,266.01	1,082,604.77
250 Unemployment Compensation	1,255.70	1,374.29		2,629.99
260 Workers' Compensation	7,554.19	11,369.64		18,923.83
270 Group Insurance – Self-Insurance	259,999.50	359,926.83		619,926.33
280 Other Post-Employment Benefits (OPEB)	2,999.70	2,999.69		5,999.39
292 Health Savings Accounts	53,375.00	73,625.00		127,000.00
Total Personnel Services – Employee Benefits	\$831,242.27	\$1,247,610.13	\$36,139.97	\$2,114,992.37
300 Purchased Professional and Technical Services				
322 Professional Educational Services – Ius	2,032,525.24	1,969,548.94	533,447.00	4,535,521.18
329 Professional Educational Services – Other	4,560.48	4,560.47		9,120.95
330 Other Professional Services	52,108.62	52,108.61	334,755.64	438,972.87
Total Purchased Professional and Technical Services	\$2,089,194.34	\$2,026,218.02	\$868,202.64	\$4,983,615.00
400 Purchased Property Services				
440 Rentals	1,411.64	1,411.62		2,823.26
Total Purchased Property Services	\$1,411.64	\$1,411.62		\$2,823.26
500 Other Purchased Services				
510 Student Transportation Services		230.48		230.48
530 Communications	617.73	894.98		1,512.71
550 Printing and Binding		178.90		178.90
561 Tuition To Other School Districts Within the State	42,678.03	42,678.02		85,356.05
562 Tuition To Pennsylvania Charter Schools	1,441,827.90	1,441,827.90		2,883,655.80
563 Tuition To Nonpublic Schools	59,238.33	59,238.33		118,476.66
567 Tuition To Approved Private Schools (APS) and PA Chartered Schools for the Deaf and Blind	110,578.18	110,578.18		221,156.36
568 Tuition To Private Residential Rehabilitative Institutions (PRRI) [In-State] and Detention Centers	36,696.73	36,696.72		73,393.45
580 Travel	384.15	384.15		768.30
Total Other Purchased Services	\$1,692,021.05	\$1,692,707.66		\$3,384,728.71
600 Supplies				
610 General Supplies	14,613.70	9,660.00		24,273.70
630 Food	218.91	494.88		713.79
640 Books and Periodicals	1,857.87	234.92		2,092.79
650 Supplies & Fees – Technology Related	12,324.22	15,819.27		28,143.49
Total Supplies	\$29,014.70	\$26,209.07		\$55,223.77
800 Other Objects				
890 Miscellaneous Expenditures	175.00	630.22		805.22
Total Other Objects	\$175.00	\$630.22		\$805.22
Total 1200 Special Programs – Elementary / Secondary	\$5,868,514.03	\$6,980,489.98	\$994,198.34	\$13,843,202.35

General Fund (10)

1210 Life Skills Support

	<u>Elementary</u>	<u>Secondary</u>	<u>Federal</u>	<u>Total</u>
100 Personnel Services – Salaries				
100 Personnel Services – Salaries	52,244.00	138,472.00		190,716.00
Total Personnel Services – Salaries	\$52,244.00	\$138,472.00		\$190,716.00
200 Personnel Services – Employee Benefits				
210 Group Insurance – Contracted Provider	378.44	378.44		756.88
220 Social Security Contributions	3,938.80	10,202.34		14,141.14
230 PSERS Retirement Contributions	16,964.45	44,963.96		61,928.41
250 Unemployment Compensation	34.81	69.14		103.95
260 Workers' Compensation	298.67	791.91		1,090.58
270 Group Insurance – Self-Insurance	26,797.30	26,797.28		53,594.58
292 Health Savings Accounts	6,000.00	6,000.00		12,000.00
Total Personnel Services – Employee Benefits	\$54,412.47	\$89,203.07		\$143,615.54
300 Purchased Professional and Technical Services				
322 Professional Educational Services – lus	179,077.09	179,077.08	39,656.34	397,810.51
Total Purchased Professional and Technical Services	\$179,077.09	\$179,077.08	\$39,656.34	\$397,810.51
400 Purchased Property Services				
440 Rentals	281.86	281.85		563.71
Total Purchased Property Services	\$281.86	\$281.85		\$563.71
500 Other Purchased Services				
530 Communications	592.08	869.33		1,461.41
Total Other Purchased Services	\$592.08	\$869.33		\$1,461.41
600 Supplies				
610 General Supplies		2,251.54		2,251.54
630 Food		275.98		275.98
640 Books and Periodicals		178.82		178.82
650 Supplies & Fees – Technology Related		199.85		199.85
Total Supplies		\$2,906.19		\$2,906.19
800 Other Objects				
890 Miscellaneous Expenditures		630.22		630.22
Total Other Objects		\$630.22		\$630.22
Total 1210 Life Skills Support	\$286,607.50	\$411,439.74	\$39,656.34	\$737,703.58

General Fund (10)

1230 Emotional Support

	<u>Elementary</u>	<u>Secondary</u>	<u>Federal</u>	<u>Total</u>
100 Personnel Services – Salaries				
100 Personnel Services – Salaries	212,459.00	398,756.00		611,215.00
Total Personnel Services – Salaries	\$212,459.00	\$398,756.00		\$611,215.00
200 Personnel Services – Employee Benefits				
210 Group Insurance – Contracted Provider	1,239.13	1,239.10		2,478.23
220 Social Security Contributions	16,056.23	29,794.20		45,850.43
230 PSERS Retirement Contributions	68,988.65	129,481.98		198,470.63
250 Unemployment Compensation	139.20	207.49		346.69
260 Workers' Compensation	1,216.09	2,280.09		3,496.18
270 Group Insurance – Self-Insurance	55,769.72	83,696.88		139,466.60
292 Health Savings Accounts	13,500.00	15,625.00		29,125.00
Total Personnel Services – Employee Benefits	\$156,909.02	\$262,324.74		\$419,233.76
300 Purchased Professional and Technical Services				
322 Professional Educational Services – lus	225,576.81	264,857.31	91,799.24	582,233.36
Total Purchased Professional and Technical Services	\$225,576.81	\$264,857.31	\$91,799.24	\$582,233.36
600 Supplies				
610 General Supplies		746.72		746.72
Total Supplies		\$746.72		\$746.72
Total 1230 Emotional Support	\$594,944.83	\$926,684.77	\$91,799.24	\$1,613,428.84

General Fund (10)

1240 Academic Support

	<u>Elementary</u>	<u>Secondary</u>	<u>Federal</u>	<u>Total</u>
100 Personnel Services – Salaries				
100 Personnel Services – Salaries	740,466.97	1,252,740.52	89,855.73	2,083,063.22
Total Personnel Services – Salaries	\$740,466.97	\$1,252,740.52	\$89,855.73	\$2,083,063.22
200 Personnel Services – Employee Benefits				
210 Group Insurance – Contracted Provider	3,786.75	3,786.74		7,573.49
220 Social Security Contributions	55,298.41	93,179.12	6,873.96	155,351.49
230 PSERS Retirement Contributions	251,069.41	406,783.99	29,266.01	687,119.41
250 Unemployment Compensation	552.19	655.82		1,208.01
260 Workers' Compensation	4,765.41	7,164.68		11,930.09
270 Group Insurance – Self-Insurance	177,432.48	249,432.67		426,865.15
292 Health Savings Accounts	33,875.00	52,000.00		85,875.00
Total Personnel Services – Employee Benefits	\$526,779.65	\$813,003.02	\$36,139.97	\$1,375,922.64
300 Purchased Professional and Technical Services				
322 Professional Educational Services – Ius	149,141.88	149,141.87	56,497.32	354,781.07
329 Professional Educational Services – Other	4,560.48	4,560.47		9,120.95
Total Purchased Professional and Technical Services	\$153,702.36	\$153,702.34	\$56,497.32	\$363,902.02
500 Other Purchased Services				
510 Student Transportation Services		230.48		230.48
550 Printing and Binding		178.90		178.90
Total Other Purchased Services		\$409.38		\$409.38
600 Supplies				
610 General Supplies	461.95	2,043.00		2,504.95
630 Food	218.91	218.90		437.81
650 Supplies & Fees – Technology Related		475.00		475.00
Total Supplies	\$680.86	\$2,736.90		\$3,417.76
800 Other Objects				
890 Miscellaneous Expenditures	175.00			175.00
Total Other Objects	\$175.00			\$175.00
Total 1240 Academic Support	\$1,421,804.84	\$2,222,592.16	\$182,493.02	\$3,826,890.02

General Fund (10)

	<u>Elementary</u>	<u>Secondary</u>	<u>Federal</u>	<u>Total</u>
1241 Learning Support – Public				
100 Personnel Services – Salaries				
100 Personnel Services – Salaries	655,067.97	1,076,907.72	89,855.73	1,821,831.42
Total Personnel Services – Salaries	\$655,067.97	\$1,076,907.72	\$89,855.73	\$1,821,831.42
200 Personnel Services – Employee Benefits				
210 Group Insurance – Contracted Provider	3,366.74	3,366.74		6,733.48
220 Social Security Contributions	48,851.43	80,058.41	6,873.96	135,783.80
230 PSERS Retirement Contributions	223,339.01	349,688.30	29,266.01	602,293.32
250 Unemployment Compensation	517.39	518.94		1,036.33
260 Workers' Compensation	4,277.10	6,158.44		10,435.54
270 Group Insurance – Self-Insurance	156,901.87	241,717.91		398,619.78
292 Health Savings Accounts	30,875.00	49,000.00		79,875.00
Total Personnel Services – Employee Benefits	\$468,128.54	\$730,508.74	\$36,139.97	\$1,234,777.25
300 Purchased Professional and Technical Services				
322 Professional Educational Services – Ius	148,391.88	148,391.87	56,497.32	353,281.07
Total Purchased Professional and Technical Services	\$148,391.88	\$148,391.87	\$56,497.32	\$353,281.07
Total 1241 Learning Support – Public	\$1,271,588.39	\$1,955,808.33	\$182,493.02	\$3,409,889.74

General Fund (10)

1243 Gifted Support

	<u>Elementary</u>	<u>Secondary</u>	<u>Federal</u>	<u>Total</u>
100 Personnel Services – Salaries				
100 Personnel Services – Salaries	85,399.00	175,832.80		261,231.80
Total Personnel Services – Salaries	\$85,399.00	\$175,832.80		\$261,231.80
200 Personnel Services – Employee Benefits				
210 Group Insurance – Contracted Provider	420.01	420.00		840.01
220 Social Security Contributions	6,446.98	13,120.71		19,567.69
230 PSERS Retirement Contributions	27,730.40	57,095.69		84,826.09
250 Unemployment Compensation	34.80	136.88		171.68
260 Workers' Compensation	488.31	1,006.24		1,494.55
270 Group Insurance – Self-Insurance	20,530.61	7,714.76		28,245.37
292 Health Savings Accounts	3,000.00	3,000.00		6,000.00
Total Personnel Services – Employee Benefits	\$58,651.11	\$82,494.28		\$141,145.39
300 Purchased Professional and Technical Services				
322 Professional Educational Services – Ius	750.00	750.00		1,500.00
329 Professional Educational Services – Other	4,560.48	4,560.47		9,120.95
Total Purchased Professional and Technical Services	\$5,310.48	\$5,310.47		\$10,620.95
500 Other Purchased Services				
510 Student Transportation Services		230.48		230.48
550 Printing and Binding		178.90		178.90
Total Other Purchased Services		\$409.38		\$409.38
600 Supplies				
610 General Supplies	461.95	2,043.00		2,504.95
630 Food	218.91	218.90		437.81
650 Supplies & Fees – Technology Related		475.00		475.00
Total Supplies	\$680.86	\$2,736.90		\$3,417.76
800 Other Objects				
890 Miscellaneous Expenditures	175.00			175.00
Total Other Objects	\$175.00			\$175.00
Total 1243 Gifted Support	\$150,216.45	\$266,783.83		\$417,000.28

General Fund (10)

1270 Multi-Handicapped Support

300 Purchased Professional and Technical Services

322 Professional Educational Services – lus

Total Purchased Professional and Technical Services

Total 1270 Multi-Handicapped Support

Elementary

Secondary

Federal

Total

131,342.86

131,342.86

262,685.72

\$131,342.86

\$131,342.86

\$262,685.72

\$131,342.86

\$131,342.86

\$262,685.72

General Fund (10)

1280 Early Intervention Support

300 Purchased Professional and Technical Services

322 Professional Educational Services – lus

Total Purchased Professional and Technical Services

Total 1280 Early Intervention Support

Elementary

Secondary

Federal

Total

102,256.77

102,256.77

\$102,256.77

\$102,256.77

\$102,256.77

\$102,256.77

General Fund (10)

	<u>Elementary</u>	<u>Secondary</u>	<u>Federal</u>	<u>Total</u>
1290 Special Programs - Other Support				
100 Personnel Services – Salaries				
100 Personnel Services – Salaries	220,285.06	195,734.74		416,019.80
Total Personnel Services – Salaries	\$220,285.06	\$195,734.74		\$416,019.80
200 Personnel Services – Employee Benefits				
220 Social Security Contributions	16,815.21	14,941.19		31,756.40
230 PSERS Retirement Contributions	71,522.70	63,563.62		135,086.32
250 Unemployment Compensation	529.50	441.84		971.34
260 Workers' Compensation	1,274.02	1,132.96		2,406.98
280 Other Post-Employment Benefits (OPEB)	2,999.70	2,999.69		5,999.39
Total Personnel Services – Employee Benefits	\$93,141.13	\$83,079.30		\$176,220.43
300 Purchased Professional and Technical Services				
322 Professional Educational Services – lus	922,713.19	922,713.18	345,494.10	2,190,920.47
330 Other Professional Services	52,108.62	52,108.61	334,755.64	438,972.87
Total Purchased Professional and Technical Services	\$974,821.81	\$974,821.79	\$680,249.74	\$2,629,893.34
400 Purchased Property Services				
440 Rentals	1,129.78	1,129.77		2,259.55
Total Purchased Property Services	\$1,129.78	\$1,129.77		\$2,259.55
500 Other Purchased Services				
530 Communications	25.65	25.65		51.30
561 Tuition To Other School Districts Within the State	42,678.03	42,678.02		85,356.05
562 Tuition To Pennsylvania Charter Schools	1,441,827.90	1,441,827.90		2,883,655.80
563 Tuition To Nonpublic Schools	59,238.33	59,238.33		118,476.66
567 Tuition To Approved Private Schools (APS) and PA Chartered Schools for the Deaf and Blind	110,578.18	110,578.18		221,156.36
568 Tuition To Private Residential Rehabilitative Institutions (PRRI) [In-State] and Detention Centers	36,696.73	36,696.72		73,393.45
580 Travel	384.15	384.15		768.30
Total Other Purchased Services	\$1,691,428.97	\$1,691,428.95		\$3,382,857.92
600 Supplies				
610 General Supplies	12,421.09	4,618.74		17,039.83
640 Books and Periodicals	1,857.87	56.10		1,913.97
650 Supplies & Fees – Technology Related	12,324.22	15,144.42		27,468.64
Total Supplies	\$26,603.18	\$19,819.26		\$46,422.44
Total 1290 Special Programs - Other Support	\$3,007,409.93	\$2,966,013.81	\$680,249.74	\$6,653,673.48

General Fund (10)

1300 Vocational Education

300 Purchased Professional and Technical Services

390 Other Purchased Professional and Technical Services

Total Purchased Professional and Technical Services

Total 1300 Vocational Education

Elementary

Secondary

Federal

Total

3,431,313.00

3,431,313.00

\$3,431,313.00

\$3,431,313.00

\$3,431,313.00

\$3,431,313.00

General Fund (10)

	<u>Elementary</u>	<u>Secondary</u>	<u>Federal</u>	<u>Total</u>
1400 Other Instructional Programs – Elementary / Secondary				
100 Personnel Services – Salaries				
100 Personnel Services – Salaries	1,840.50	8,833.50		10,674.00
Total Personnel Services – Salaries	\$1,840.50	\$8,833.50		\$10,674.00
200 Personnel Services – Employee Benefits				
220 Social Security Contributions	140.61	665.42		806.03
230 PSERS Retirement Contributions	597.68	2,868.39		3,466.07
250 Unemployment Compensation	6.48	6.89		13.37
260 Workers' Compensation	10.63	50.77		61.40
Total Personnel Services – Employee Benefits	\$755.40	\$3,591.47		\$4,346.87
300 Purchased Professional and Technical Services				
322 Professional Educational Services – Ius	4,572.00	4,572.00		9,144.00
Total Purchased Professional and Technical Services	\$4,572.00	\$4,572.00		\$9,144.00
500 Other Purchased Services				
561 Tuition To Other School Districts Within the State	5,401.51	5,401.51		10,803.02
568 Tuition To Private Residential Rehabilitative Institutions (PRRI) [In-State] and Detention Centers	16,445.50	16,445.50		32,891.00
Total Other Purchased Services	\$21,847.01	\$21,847.01		\$43,694.02
800 Other Objects				
810 Dues and Fees	200.00	200.00		400.00
Total Other Objects	\$200.00	\$200.00		\$400.00
Total 1400 Other Instructional Programs – Elementary / Secondary	\$29,214.91	\$39,043.98		\$68,258.89

General Fund (10)

1420 Summer School

100 Personnel Services – Salaries

100 Personnel Services – Salaries

Total Personnel Services – Salaries

200 Personnel Services – Employee Benefits

220 Social Security Contributions

230 PSERS Retirement Contributions

260 Workers' Compensation

Total Personnel Services – Employee Benefits

Total 1420 Summer School

	<u>Elementary</u>	<u>Secondary</u>	<u>Federal</u>	<u>Total</u>
		6,048.00		6,048.00
		\$6,048.00		\$6,048.00
		453.26		453.26
		1,963.84		1,963.84
		34.71		34.71
		\$2,451.81		\$2,451.81
		\$8,499.81		\$8,499.81

General Fund (10)

1430 Homebound Instruction

100 Personnel Services – Salaries

	<u>Elementary</u>	<u>Secondary</u>	<u>Federal</u>	<u>Total</u>
100 Personnel Services – Salaries	1,840.50	1,840.50		3,681.00
Total Personnel Services – Salaries	\$1,840.50	\$1,840.50		\$3,681.00

200 Personnel Services – Employee Benefits

220 Social Security Contributions	140.61	140.61		281.22
230 PSERS Retirement Contributions	597.68	597.68		1,195.36
250 Unemployment Compensation	6.48	6.47		12.95
260 Workers' Compensation	10.63	10.63		21.26
Total Personnel Services – Employee Benefits	\$755.40	\$755.39		\$1,510.79
Total 1430 Homebound Instruction	\$2,595.90	\$2,595.89		\$5,191.79

General Fund (10)

	<u>Elementary</u>	<u>Secondary</u>	<u>Federal</u>	<u>Total</u>
1440 Alternative Regular Education Programs				
300 <u>Purchased Professional and Technical Services</u>				
322 Professional Educational Services – Ius	4,572.00	4,572.00		9,144.00
Total Purchased Professional and Technical Services	\$4,572.00	\$4,572.00		\$9,144.00
500 <u>Other Purchased Services</u>				
561 Tuition To Other School Districts Within the State	5,401.51	5,401.51		10,803.02
568 Tuition To Private Residential Rehabilitative Institutions (PRRI) [In-State] and Detention Centers	16,445.50	16,445.50		32,891.00
Total Other Purchased Services	\$21,847.01	\$21,847.01		\$43,694.02
800 <u>Other Objects</u>				
810 Dues and Fees	200.00	200.00		400.00
Total Other Objects	\$200.00	\$200.00		\$400.00
Total 1440 Alternative Regular Education Programs	\$26,619.01	\$26,619.01		\$53,238.02

General Fund (10)

1441 Adjudicated / Court-Placed Programs

500 Other Purchased Services

	<u>Elementary</u>	<u>Secondary</u>	<u>Federal</u>	<u>Total</u>
561 Tuition To Other School Districts Within the State	5,401.51	5,401.51		10,803.02
568 Tuition To Private Residential Rehabilitative Institutions (PRRI) [In-State] and Detention Centers	16,445.50	16,445.50		32,891.00
Total Other Purchased Services	\$21,847.01	\$21,847.01		\$43,694.02
Total 1441 Adjudicated / Court-Placed Programs	\$21,847.01	\$21,847.01		\$43,694.02

General Fund (10)

	<u>Elementary</u>	<u>Secondary</u>	<u>Federal</u>	<u>Total</u>
1442 Alternative Education Programs				
300 <u>Purchased Professional and Technical Services</u>				
322 Professional Educational Services – lus	4,572.00	4,572.00		9,144.00
Total Purchased Professional and Technical Services	\$4,572.00	\$4,572.00		\$9,144.00
800 <u>Other Objects</u>				
810 Dues and Fees	200.00	200.00		400.00
Total Other Objects	\$200.00	\$200.00		\$400.00
Total 1442 Alternative Education Programs	\$4,772.00	\$4,772.00		\$9,544.00

General Fund (10)

	<u>Elementary</u>	<u>Secondary</u>	<u>Federal</u>	<u>Total</u>
1450 Instructional Programs Outside the Established School Day				
100 Personnel Services – Salaries				
100 Personnel Services – Salaries		945.00		945.00
Total Personnel Services – Salaries		\$945.00		\$945.00
200 Personnel Services – Employee Benefits				
220 Social Security Contributions		71.55		71.55
230 PSERS Retirement Contributions		306.87		306.87
250 Unemployment Compensation		0.42		0.42
260 Workers' Compensation		5.43		5.43
Total Personnel Services – Employee Benefits		\$384.27		\$384.27
Total 1450 Instructional Programs Outside the Established School Day		\$1,329.27		\$1,329.27

LEA : 124150503 Avon Grove SD

Printed 11/2/2018 8:02:36 AM

General Fund (10)

2000 Support Services

Total

100 Personnel Services – Salaries

100 Personnel Services – Salaries 7,838,603.73

Total Personnel Services – Salaries \$7,838,603.73

200 Personnel Services – Employee Benefits

210 Group Insurance – Contracted Provider 30,539.72

220 Social Security Contributions 573,379.99

230 PSERS Retirement Contributions 2,499,725.79

240 Tuition Reimbursement 297,427.42

250 Unemployment Compensation 4,504.11

260 Workers' Compensation 44,557.56

270 Group Insurance – Self-Insurance 1,378,045.58

280 Other Post-Employment Benefits (OPEB) 69,394.22

291 Other Retirement Plans 3,328.80

292 Health Savings Accounts 144,000.00

299 All Other Employee Benefits 422.50

Total Personnel Services – Employee Benefits \$5,045,325.69

300 Purchased Professional and Technical Services

310 Official / Administrative Services 91,459.13

322 Professional Educational Services – lus 150,290.61

324 Professional Educational Services – Employee Training and Development Services 56,324.10

329 Professional Educational Services – Other 16,000.00

330 Other Professional Services 685,613.25

340 Technical Services 354,752.79

350 Security / Safety Services 33,272.51

390 Other Purchased Professional and Technical Services 88,997.00

Total Purchased Professional and Technical Services \$1,476,709.39

400 Purchased Property Services

410 Cleaning Services 1,149,479.06

420 Utility Services 147,277.15

430 Repairs and Maintenance Services 216,954.94

440 Rentals 268,400.35

450 Construction Services 3,532.00

460 Extermination Services 8,580.00

Total Purchased Property Services \$1,794,223.50

500 Other Purchased Services

511 Student Transportation Services from Another LEA Within the State 17,850.00

513 Contracted Carriers 5,966,177.85

516 Student Transportation Services From the IU 7,271.30

520 Insurance – General 60,767.20

521 Fire Insurance 132,535.00

522 Automotive Liability Insurance 9,576.00

523 General Property and Liability Insurance 33,586.00

530 Communications 148,328.64

549 Other Advertising/Public Relations 689.71

LEA : 124150503 Avon Grove SD

Printed 11/2/2018 8:02:36 AM

General Fund (10)

2000 Support Services

Total

500 Other Purchased Services

550 Printing and Binding	6,635.95
580 Travel	26,723.11
591 Services Purchased Locally	98.72
595 IU Payments By Withholding	32,702.98
596 Direct Payments To Intermediate Units	107,310.00
599 Other Miscellaneous Purchased Services	1,182.50

Total Other Purchased Services \$6,551,434.96

600 Supplies

610 General Supplies	354,535.07
620 Energy	719,093.61
630 Food	8,726.38
640 Books and Periodicals	273,409.20
650 Supplies & Fees – Technology Related	189,259.84

Total Supplies \$1,545,024.10

700 Property

756 Capitalized Technology Hardware and Equipment – Original	501,668.72
766 Capitalized Technology Hardware and Equipment – Replacement	461,363.56

Total Property \$963,032.28

800 Other Objects

810 Dues and Fees	47,051.47
820 Claims and Judgments Against the LEA	122,187.68
890 Miscellaneous Expenditures	66,215.49
899 Pass-Through Funds	594,848.38

Total Other Objects \$830,303.02

Total 2000 Support Services \$26,044,656.67

General Fund (10)

2100 Support Services – Students

	<u>Elementary</u>	<u>Secondary</u>	<u>Federal</u>	<u>Total</u>
100 Personnel Services – Salaries				
100 Personnel Services – Salaries	966,229.01	1,210,372.32	11,511.46	2,338,280.27
Total Personnel Services – Salaries	\$966,229.01	\$1,210,372.32	\$11,511.46	\$2,338,280.27
200 Personnel Services – Employee Benefits				
210 Group Insurance – Contracted Provider	3,752.87	3,752.84		8,087.21
220 Social Security Contributions	72,366.27	89,265.83	880.62	173,754.42
230 PSERS Retirement Contributions	311,907.41	390,558.30	3,583.96	754,733.81
250 Unemployment Compensation	524.27	567.74	38.67	1,265.58
260 Workers' Compensation	5,536.31	6,944.68	89.66	13,433.23
270 Group Insurance – Self-Insurance	134,258.58	251,531.86		421,601.87
292 Health Savings Accounts	24,000.00	34,500.00		61,500.00
Total Personnel Services – Employee Benefits	\$552,345.71	\$777,121.25	\$4,592.91	\$1,434,376.12
300 Purchased Professional and Technical Services				
324 Professional Educational Services – Employee Training and Development Services	976.25	976.25		1,952.50
330 Other Professional Services	45,749.13	54,692.11		100,441.24
340 Technical Services	2,961.05	2,961.05		5,922.10
390 Other Purchased Professional and Technical Services	250.00	250.00		500.00
Total Purchased Professional and Technical Services	\$49,936.43	\$58,879.41		\$108,815.84
400 Purchased Property Services				
410 Cleaning Services	130.25	130.25		260.50
440 Rentals	1,750.32	1,750.32		3,500.64
Total Purchased Property Services	\$1,880.57	\$1,880.57		\$3,761.14
500 Other Purchased Services				
530 Communications	2,082.00	3,124.94		5,206.94
580 Travel	2,267.45	2,452.28		4,719.73
Total Other Purchased Services	\$4,349.45	\$5,577.22		\$9,926.67
600 Supplies				
610 General Supplies	7,893.70	9,088.68		16,982.38
630 Food	400.58	696.01		1,096.59
650 Supplies & Fees – Technology Related	5,430.44	5,447.43		10,877.87
Total Supplies	\$13,724.72	\$15,232.12		\$28,956.84
800 Other Objects				
810 Dues and Fees	77.50	77.50		155.00
890 Miscellaneous Expenditures		64,768.65		64,768.65
Total Other Objects	\$77.50	\$64,846.15		\$64,923.65
Total 2100 Support Services – Students	\$1,588,543.39	\$2,133,909.04	\$16,104.37	\$3,989,040.53

General Fund (10)

	<u>Elementary</u>	<u>Secondary</u>	<u>Federal</u>	<u>Total</u>
2110 Supervision of Student Services				
100 Personnel Services – Salaries				
100 Personnel Services – Salaries	136,942.38	130,109.16	11,511.46	278,563.00
Total Personnel Services – Salaries	\$136,942.38	\$130,109.16	\$11,511.46	\$278,563.00
200 Personnel Services – Employee Benefits				
210 Group Insurance – Contracted Provider	556.61	556.61		1,113.22
220 Social Security Contributions	10,127.66	9,589.95	880.62	20,598.23
230 PSERS Retirement Contributions	43,976.83	41,757.98	3,583.96	89,318.77
250 Unemployment Compensation	102.92	66.20	38.67	207.79
260 Workers' Compensation	787.11	747.83	89.66	1,624.60
270 Group Insurance – Self-Insurance	22,205.34	22,205.32		44,410.66
292 Health Savings Accounts	1,500.00	1,500.00		3,000.00
Total Personnel Services – Employee Benefits	\$79,256.47	\$76,423.89	\$4,592.91	\$160,273.27
300 Purchased Professional and Technical Services				
324 Professional Educational Services – Employee Training and Development Services	976.25	976.25		1,952.50
330 Other Professional Services	14,719.03	14,719.02		29,438.05
340 Technical Services	2,961.05	2,961.05		5,922.10
390 Other Purchased Professional and Technical Services	250.00	250.00		500.00
Total Purchased Professional and Technical Services	\$18,906.33	\$18,906.32		\$37,812.65
400 Purchased Property Services				
410 Cleaning Services	130.25	130.25		260.50
440 Rentals	1,750.32	1,750.32		3,500.64
Total Purchased Property Services	\$1,880.57	\$1,880.57		\$3,761.14
500 Other Purchased Services				
530 Communications	2,082.00	2,082.00		4,164.00
580 Travel	2,267.45	2,267.45		4,534.90
Total Other Purchased Services	\$4,349.45	\$4,349.45		\$8,698.90
600 Supplies				
610 General Supplies	975.21	975.21		1,950.42
630 Food	304.33	304.33		608.66
650 Supplies & Fees – Technology Related	1,780.19	1,780.19		3,560.38
Total Supplies	\$3,059.73	\$3,059.73		\$6,119.46
800 Other Objects				
810 Dues and Fees	77.50	77.50		155.00
Total Other Objects	\$77.50	\$77.50		\$155.00
Total 2110 Supervision of Student Services	\$244,472.43	\$234,806.62	\$16,104.37	\$495,383.42

General Fund (10)

	<u>Elementary</u>	<u>Secondary</u>	<u>Federal</u>	<u>Total</u>
2111 Supervision of Student Services – Head of Component				
100 Personnel Services – Salaries				
100 Personnel Services – Salaries	130,068.29	118,672.09	11,511.46	260,251.84
Total Personnel Services – Salaries	\$130,068.29	\$118,672.09	\$11,511.46	\$260,251.84
200 Personnel Services – Employee Benefits				
210 Group Insurance – Contracted Provider	556.61	556.61		1,113.22
220 Social Security Contributions	9,602.82	8,726.96	880.62	19,210.40
230 PSERS Retirement Contributions	41,809.39	38,108.87	3,583.96	83,502.22
250 Unemployment Compensation	90.39	52.21	38.67	181.27
260 Workers' Compensation	747.29	681.89	89.66	1,518.84
270 Group Insurance – Self-Insurance	22,205.34	22,205.32		44,410.66
292 Health Savings Accounts	1,500.00	1,500.00		3,000.00
Total Personnel Services – Employee Benefits	\$76,511.84	\$71,831.86	\$4,592.91	\$152,936.61
300 Purchased Professional and Technical Services				
324 Professional Educational Services – Employee Training and Development Services	976.25	976.25		1,952.50
330 Other Professional Services	14,719.03	14,719.02		29,438.05
340 Technical Services	2,961.05	2,961.05		5,922.10
390 Other Purchased Professional and Technical Services	250.00	250.00		500.00
Total Purchased Professional and Technical Services	\$18,906.33	\$18,906.32		\$37,812.65
400 Purchased Property Services				
410 Cleaning Services	130.25	130.25		260.50
440 Rentals	1,750.32	1,750.32		3,500.64
Total Purchased Property Services	\$1,880.57	\$1,880.57		\$3,761.14
500 Other Purchased Services				
530 Communications	2,082.00	2,082.00		4,164.00
580 Travel	2,267.45	2,267.45		4,534.90
Total Other Purchased Services	\$4,349.45	\$4,349.45		\$8,698.90
600 Supplies				
610 General Supplies	975.21	975.21		1,950.42
630 Food	304.33	304.33		608.66
650 Supplies & Fees – Technology Related	1,780.19	1,780.19		3,560.38
Total Supplies	\$3,059.73	\$3,059.73		\$6,119.46
800 Other Objects				
810 Dues and Fees	77.50	77.50		155.00
Total Other Objects	\$77.50	\$77.50		\$155.00
Total 2111 Supervision of Student Services – Head of Component	\$234,853.71	\$218,777.52	\$16,104.37	\$469,735.60

General Fund (10)

2119 Supervision of Student Services – All Other Supervision

	<u>Elementary</u>	<u>Secondary</u>	<u>Federal</u>	<u>Total</u>
100 Personnel Services – Salaries				
100 Personnel Services – Salaries	6,874.09	11,437.07		18,311.16
Total Personnel Services – Salaries	\$6,874.09	\$11,437.07		\$18,311.16
200 Personnel Services – Employee Benefits				
220 Social Security Contributions	524.84	862.99		1,387.83
230 PSERS Retirement Contributions	2,167.44	3,649.11		5,816.55
250 Unemployment Compensation	12.53	13.99		26.52
260 Workers' Compensation	39.82	65.94		105.76
Total Personnel Services – Employee Benefits	\$2,744.63	\$4,592.03		\$7,336.66
Total 2119 Supervision of Student Services – All Other Supervision	\$9,618.72	\$16,029.10		\$25,647.82

General Fund (10)

2120 Guidance Services

	<u>Elementary</u>	<u>Secondary</u>	<u>Federal</u>	<u>Total</u>
100 Personnel Services – Salaries				
100 Personnel Services – Salaries	422,170.34	798,055.45		1,220,225.79
Total Personnel Services – Salaries	\$422,170.34	\$798,055.45		\$1,220,225.79
200 Personnel Services – Employee Benefits				
210 Group Insurance – Contracted Provider	1,969.07	1,969.07		3,938.14
220 Social Security Contributions	31,318.62	59,109.49		90,428.11
230 PSERS Retirement Contributions	136,110.83	257,404.09		393,514.92
250 Unemployment Compensation	229.94	379.73		609.67
260 Workers' Compensation	2,413.74	4,578.00		6,991.74
270 Group Insurance – Self-Insurance	53,481.15	175,777.31		229,258.46
292 Health Savings Accounts	10,500.00	24,000.00		34,500.00
Total Personnel Services – Employee Benefits	\$236,023.35	\$523,217.69		\$759,241.04
300 Purchased Professional and Technical Services				
330 Other Professional Services		8,943.00		8,943.00
Total Purchased Professional and Technical Services		\$8,943.00		\$8,943.00
500 Other Purchased Services				
530 Communications		1,042.94		1,042.94
580 Travel		184.83		184.83
Total Other Purchased Services		\$1,227.77		\$1,227.77
600 Supplies				
610 General Supplies	1,558.09	2,753.08		4,311.17
630 Food	96.25	391.68		487.93
650 Supplies & Fees – Technology Related	2,498.00	2,514.99		5,012.99
Total Supplies	\$4,152.34	\$5,659.75		\$9,812.09
800 Other Objects				
890 Miscellaneous Expenditures		64,768.65		64,768.65
Total Other Objects		\$64,768.65		\$64,768.65
Total 2120 Guidance Services	\$662,346.03	\$1,401,872.31		\$2,064,218.34

General Fund (10)

2130 Attendance Services

Elementary

Secondary

Federal

Total

100 Personnel Services – Salaries

100 Personnel Services – Salaries

88,353.98

Total Personnel Services – Salaries

\$88,353.98

200 Personnel Services – Employee Benefits

210 Group Insurance – Contracted Provider

242.63

220 Social Security Contributions

6,590.77

230 PSERS Retirement Contributions

28,612.25

250 Unemployment Compensation

100.09

260 Workers' Compensation

507.64

270 Group Insurance – Self-Insurance

17,864.86

292 Health Savings Accounts

3,000.00

Total Personnel Services – Employee Benefits

\$56,918.24

Total 2130 Attendance Services

\$145,272.22

General Fund (10)

	<u>Elementary</u>	<u>Secondary</u>	<u>Federal</u>	<u>Total</u>
2140 Psychological Services				
100 Personnel Services – Salaries				
100 Personnel Services – Salaries	189,790.29	202,279.71		392,070.00
Total Personnel Services – Salaries	\$189,790.29	\$202,279.71		\$392,070.00
200 Personnel Services – Employee Benefits				
210 Group Insurance – Contracted Provider	682.24	682.23		1,364.47
220 Social Security Contributions	14,333.56	14,834.02		29,167.58
230 PSERS Retirement Contributions	61,387.07	65,442.49		126,829.56
250 Unemployment Compensation	86.99	87.00		173.99
260 Workers' Compensation	1,090.35	1,161.80		2,252.15
270 Group Insurance – Self-Insurance	17,864.87	35,729.71		53,594.58
292 Health Savings Accounts	3,000.00	6,000.00		9,000.00
Total Personnel Services – Employee Benefits	\$98,445.08	\$123,937.25		\$222,382.33
300 Purchased Professional and Technical Services				
330 Other Professional Services	31,030.10	31,030.09		62,060.19
Total Purchased Professional and Technical Services	\$31,030.10	\$31,030.09		\$62,060.19
600 Supplies				
610 General Supplies	5,360.40	5,360.39		10,720.79
650 Supplies & Fees – Technology Related	1,152.25	1,152.25		2,304.50
Total Supplies	\$6,512.65	\$6,512.64		\$13,025.29
Total 2140 Psychological Services	\$325,778.12	\$363,759.69		\$689,537.81

General Fund (10)

2150 Speech Pathology and Audiology Services

100 Personnel Services – Salaries

	<u>Elementary</u>	<u>Secondary</u>	<u>Federal</u>	<u>Total</u>
100 Personnel Services – Salaries	217,326.00	79,928.00		297,254.00
Total Personnel Services – Salaries	\$217,326.00	\$79,928.00		\$297,254.00

200 Personnel Services – Employee Benefits

210 Group Insurance – Contracted Provider	544.95	544.93		1,089.88
220 Social Security Contributions	16,586.43	5,732.37		22,318.80
230 PSERS Retirement Contributions	70,432.68	25,953.74		96,386.42
250 Unemployment Compensation	104.42	34.81		139.23
260 Workers' Compensation	1,245.11	457.05		1,702.16
270 Group Insurance – Self-Insurance	40,707.22	17,819.52		58,526.74
292 Health Savings Accounts	9,000.00	3,000.00		12,000.00

Total Personnel Services – Employee Benefits	\$138,620.81	\$53,542.42		\$192,163.23
---	---------------------	--------------------	--	---------------------

Total 2150 Speech Pathology and Audiology Services	\$355,946.81	\$133,470.42		\$489,417.23
---	---------------------	---------------------	--	---------------------

General Fund (10)

2170 Student Accounting Services

100 Personnel Services – Salaries

100 Personnel Services – Salaries 61,813.50

Total Personnel Services – Salaries \$61,813.50

200 Personnel Services – Employee Benefits

210 Group Insurance – Contracted Provider 338.87

220 Social Security Contributions 4,650.93

230 PSERS Retirement Contributions 20,071.89

250 Unemployment Compensation 34.81

260 Workers' Compensation 354.94

270 Group Insurance – Self-Insurance 17,946.57

Total Personnel Services – Employee Benefits \$43,398.01

Total 2170 Student Accounting Services \$105,211.51

Elementary

Secondary

Federal

Total

General Fund (10)

	<u>Elementary</u>	<u>Secondary</u>	<u>Federal</u>	<u>Total</u>
2200 Support Services – Instructional Staff				
100 Personnel Services – Salaries				
100 Personnel Services – Salaries	443,495.00	625,985.51	51,352.69	1,120,833.20
Total Personnel Services – Salaries	\$443,495.00	\$625,985.51	\$51,352.69	\$1,120,833.20
200 Personnel Services – Employee Benefits				
210 Group Insurance – Contracted Provider	1,640.58	1,640.57		3,281.15
220 Social Security Contributions	33,496.79	46,938.62	2,593.82	83,029.23
230 PSERS Retirement Contributions	144,940.18	204,167.46	11,157.17	360,264.81
240 Tuition Reimbursement	103,264.00	86,189.00		189,453.00
250 Unemployment Compensation	413.12	230.20	39.43	682.75
260 Workers' Compensation	2,621.38	3,677.10	176.38	6,474.86
270 Group Insurance – Self-Insurance	39,159.01	46,607.93		85,766.94
292 Health Savings Accounts	7,250.00	5,250.00		12,500.00
Total Personnel Services – Employee Benefits	\$332,785.06	\$394,700.88	\$13,966.80	\$741,452.74
300 Purchased Professional and Technical Services				
322 Professional Educational Services – Ius	55,394.86	57,307.69	2,602.40	115,304.95
324 Professional Educational Services – Employee Training and Development Services	10,231.85	12,936.85	18,607.00	41,775.70
329 Professional Educational Services – Other			16,000.00	16,000.00
330 Other Professional Services			6,633.00	6,633.00
390 Other Purchased Professional and Technical Services		536.00		536.00
Total Purchased Professional and Technical Services	\$65,626.71	\$70,780.54	\$43,842.40	\$180,249.65
500 Other Purchased Services				
530 Communications	16,225.00	16,424.09		32,649.09
580 Travel	1,884.85	2,689.17	235.44	4,809.46
Total Other Purchased Services	\$18,109.85	\$19,113.26	\$235.44	\$37,458.55
600 Supplies				
610 General Supplies	56,507.98	4,071.87	890.84	61,470.69
630 Food	390.15	526.66		916.81
640 Books and Periodicals	129,991.73	132,918.43	4,940.22	267,850.38
650 Supplies & Fees – Technology Related	32,087.05	45,703.68		77,790.73
Total Supplies	\$218,976.91	\$183,220.64	\$5,831.06	\$408,028.61
700 Property				
756 Capitalized Technology Hardware and Equipment – Original		8,348.96		8,348.96
Total Property		\$8,348.96		\$8,348.96
800 Other Objects				
810 Dues and Fees	870.50	870.50		1,741.00
Total Other Objects	\$870.50	\$870.50		\$1,741.00
Total 2200 Support Services – Instructional Staff	\$1,079,864.03	\$1,303,020.29	\$115,228.39	\$2,498,112.71

General Fund (10)

2220 Technology Support Services

	<u>Elementary</u>	<u>Secondary</u>	<u>Federal</u>	<u>Total</u>
100 Personnel Services – Salaries				
100 Personnel Services – Salaries	57,300.00	99,270.00		156,570.00
Total Personnel Services – Salaries	\$57,300.00	\$99,270.00		\$156,570.00
200 Personnel Services – Employee Benefits				
210 Group Insurance – Contracted Provider	265.39	265.39		530.78
220 Social Security Contributions	4,236.07	7,116.57		11,352.64
230 PSERS Retirement Contributions	18,606.09	32,234.50		50,840.59
250 Unemployment Compensation	34.62	34.81		69.43
260 Workers' Compensation	327.65	567.60		895.25
270 Group Insurance – Self-Insurance	17,863.18	6,710.41		24,573.59
292 Health Savings Accounts	2,000.00			2,000.00
Total Personnel Services – Employee Benefits	\$43,333.00	\$46,929.28		\$90,262.28
300 Purchased Professional and Technical Services				
324 Professional Educational Services – Employee Training and Development Services	677.00	677.00		1,354.00
Total Purchased Professional and Technical Services	\$677.00	\$677.00		\$1,354.00
500 Other Purchased Services				
530 Communications	16,225.00	16,225.00		32,450.00
580 Travel	131.10	131.10		262.20
Total Other Purchased Services	\$16,356.10	\$16,356.10		\$32,712.20
Total 2220 Technology Support Services	\$117,666.10	\$163,232.38		\$280,898.48

General Fund (10)

2250 School Library Services

	<u>Elementary</u>	<u>Secondary</u>	<u>Federal</u>	<u>Total</u>
100 Personnel Services – Salaries				
100 Personnel Services – Salaries	36,433.66	221,201.82		257,635.48
Total Personnel Services – Salaries	\$36,433.66	\$221,201.82		\$257,635.48
200 Personnel Services – Employee Benefits				
210 Group Insurance – Contracted Provider	305.90	305.90		611.80
220 Social Security Contributions	2,783.05	16,778.04		19,561.09
230 PSERS Retirement Contributions	11,830.58	71,336.47		83,167.05
250 Unemployment Compensation	103.01	128.18		231.19
260 Workers' Compensation	208.95	1,265.31		1,474.26
270 Group Insurance – Self-Insurance	10,092.26	10,090.67		20,182.93
292 Health Savings Accounts	3,000.00	3,000.00		6,000.00
Total Personnel Services – Employee Benefits	\$28,323.75	\$102,904.57		\$131,228.32
500 Other Purchased Services				
530 Communications		199.09		199.09
Total Other Purchased Services		\$199.09		\$199.09
600 Supplies				
610 General Supplies	1,789.84	2,434.94		4,224.78
630 Food		136.51		136.51
640 Books and Periodicals	(273.96)	2,652.75		2,378.79
650 Supplies & Fees – Technology Related	706.00	14,322.63		15,028.63
Total Supplies	\$2,221.88	\$19,546.83		\$21,768.71
700 Property				
756 Capitalized Technology Hardware and Equipment – Original		8,348.96		8,348.96
Total Property		\$8,348.96		\$8,348.96
Total 2250 School Library Services	\$66,979.29	\$352,201.27		\$419,180.56

General Fund (10)

	<u>Elementary</u>	<u>Secondary</u>	<u>Federal</u>	<u>Total</u>
2260 Instruction and Curriculum Development Services				
100 Personnel Services – Salaries				
100 Personnel Services – Salaries	280,321.34	301,331.82		581,653.16
Total Personnel Services – Salaries	\$280,321.34	\$301,331.82		\$581,653.16
200 Personnel Services – Employee Benefits				
210 Group Insurance – Contracted Provider	1,069.29	1,069.28		2,138.57
220 Social Security Contributions	20,655.97	22,012.24		42,668.21
230 PSERS Retirement Contributions	89,716.99	95,928.31		185,645.30
250 Unemployment Compensation	59.33	57.16		116.49
260 Workers' Compensation	1,613.93	1,733.48		3,347.41
270 Group Insurance – Self-Insurance	11,203.57	29,806.85		41,010.42
292 Health Savings Accounts	2,250.00	2,250.00		4,500.00
Total Personnel Services – Employee Benefits	\$126,569.08	\$152,857.32		\$279,426.40
300 Purchased Professional and Technical Services				
322 Professional Educational Services – Ius	1,094.77	1,094.77		2,189.54
324 Professional Educational Services – Employee Training and Development Services	173.75	173.75		347.50
329 Professional Educational Services – Other			16,000.00	16,000.00
330 Other Professional Services			6,633.00	6,633.00
Total Purchased Professional and Technical Services	\$1,268.52	\$1,268.52	\$22,633.00	\$25,170.04
500 Other Purchased Services				
580 Travel	811.13	811.13		1,622.26
Total Other Purchased Services	\$811.13	\$811.13		\$1,622.26
600 Supplies				
610 General Supplies	54,718.14	1,636.93		56,355.07
630 Food	390.15	390.15		780.30
640 Books and Periodicals	129,914.16	129,914.16		259,828.32
650 Supplies & Fees – Technology Related	31,381.05	31,381.05		62,762.10
Total Supplies	\$216,403.50	\$163,322.29		\$379,725.79
800 Other Objects				
810 Dues and Fees	870.50	870.50		1,741.00
Total Other Objects	\$870.50	\$870.50		\$1,741.00
Total 2260 Instruction and Curriculum Development Services	\$626,244.07	\$620,461.58	\$22,633.00	\$1,269,338.65

General Fund (10)

	<u>Elementary</u>	<u>Secondary</u>	<u>Federal</u>	<u>Total</u>
2270 Instructional Staff Professional Development Services				
100 Personnel Services – Salaries				
100 Personnel Services – Salaries	10,218.39	4,181.87	51,352.69	65,752.95
Total Personnel Services – Salaries	\$10,218.39	\$4,181.87	\$51,352.69	\$65,752.95
200 Personnel Services – Employee Benefits				
220 Social Security Contributions	1,297.97	1,031.77	2,593.82	4,923.56
230 PSERS Retirement Contributions	5,559.91	4,668.18	11,157.17	21,385.26
240 Tuition Reimbursement	103,264.00	86,189.00		189,453.00
250 Unemployment Compensation	10.08	10.05	39.43	59.56
260 Workers' Compensation	131.08	110.71	176.38	418.17
Total Personnel Services – Employee Benefits	\$110,263.04	\$92,009.71	\$13,966.80	\$216,239.55
300 Purchased Professional and Technical Services				
322 Professional Educational Services – lus	54,300.09	56,212.92	2,602.40	113,115.41
324 Professional Educational Services – Employee Training and Development Services	9,381.10	12,086.10	13,287.00	34,754.20
390 Other Purchased Professional and Technical Services		536.00		536.00
Total Purchased Professional and Technical Services	\$63,681.19	\$68,835.02	\$15,889.40	\$148,405.61
500 Other Purchased Services				
580 Travel	942.62	1,746.94	235.44	2,925.00
Total Other Purchased Services	\$942.62	\$1,746.94	\$235.44	\$2,925.00
600 Supplies				
610 General Supplies			890.84	890.84
640 Books and Periodicals	351.53	351.52	4,940.22	5,643.27
Total Supplies	\$351.53	\$351.52	\$5,831.06	\$6,534.11
Total 2270 Instructional Staff Professional Development Services	\$185,456.77	\$167,125.06	\$87,275.39	\$439,857.22

General Fund (10)

2280 Nonpublic Support Services

Elementary

Secondary

Federal

Total

300 Purchased Professional and Technical Services

324 Professional Educational Services – Employee Training and Development Services

5,320.00

5,320.00

Total Purchased Professional and Technical Services

\$5,320.00

\$5,320.00

Total 2280 Nonpublic Support Services

\$5,320.00

\$5,320.00

General Fund (10)

	<u>Elementary</u>	<u>Secondary</u>	<u>Federal</u>	<u>Total</u>
2290 Other Instructional Staff Services				
100 Personnel Services – Salaries				
100 Personnel Services – Salaries	59,221.61			59,221.61
Total Personnel Services – Salaries	\$59,221.61			\$59,221.61
200 Personnel Services – Employee Benefits				
220 Social Security Contributions	4,523.73			4,523.73
230 PSERS Retirement Contributions	19,226.61			19,226.61
250 Unemployment Compensation	206.08			206.08
260 Workers' Compensation	339.77			339.77
Total Personnel Services – Employee Benefits	\$24,296.19			\$24,296.19
Total 2290 Other Instructional Staff Services	\$83,517.80			\$83,517.80

General Fund (10)

	<u>Elementary</u>	<u>Secondary</u>	<u>Federal</u>	<u>Total</u>
2300 Support Services – Administration				
100 Personnel Services – Salaries				
100 Personnel Services – Salaries	684,446.89	1,014,884.55		2,080,030.01
Total Personnel Services – Salaries	\$684,446.89	\$1,014,884.55		\$2,080,030.01
200 Personnel Services – Employee Benefits				
210 Group Insurance – Contracted Provider	4,186.68	4,186.68		9,731.61
220 Social Security Contributions	51,625.03	74,415.41		148,809.20
230 PSERS Retirement Contributions	218,121.36	323,791.30		652,010.00
250 Unemployment Compensation	374.99	491.09		1,007.33
260 Workers' Compensation	3,942.70	5,830.49		12,055.06
270 Group Insurance – Self-Insurance	117,902.89	163,952.75		314,118.30
280 Other Post-Employment Benefits (OPEB)	12,300.49	12,300.48		46,792.12
291 Other Retirement Plans				3,328.80
292 Health Savings Accounts	13,500.00	18,000.00		34,500.00
299 All Other Employee Benefits				422.50
Total Personnel Services – Employee Benefits	\$421,954.14	\$602,968.20		\$1,222,774.92
300 Purchased Professional and Technical Services				
310 Official / Administrative Services				91,459.13
324 Professional Educational Services – Employee Training and Development Services	900.00	143.00		1,392.00
330 Other Professional Services		4,400.00		372,225.83
390 Other Purchased Professional and Technical Services				87,086.00
Total Purchased Professional and Technical Services	\$900.00	\$4,543.00		\$552,162.96
400 Purchased Property Services				
410 Cleaning Services	739.00	766.50		1,505.50
430 Repairs and Maintenance Services	200.00	278.98		478.98
440 Rentals		5,088.65		18,628.65
Total Purchased Property Services	\$939.00	\$6,134.13		\$20,613.13
500 Other Purchased Services				
520 Insurance – General				60,767.20
530 Communications	1,499.42	6,578.62		8,078.04
549 Other Advertising/Public Relations				614.71
550 Printing and Binding				435.00
580 Travel	870.10	2,277.12		6,266.32
591 Services Purchased Locally				98.72
599 Other Miscellaneous Purchased Services				1,182.50
Total Other Purchased Services	\$2,369.52	\$8,855.74		\$77,442.49
600 Supplies				
610 General Supplies	3,368.17	11,026.04		28,807.45
630 Food		1,866.60		6,382.98
640 Books and Periodicals	486.55	266.31		3,876.16
650 Supplies & Fees – Technology Related	26.16	2,230.02		2,456.17
Total Supplies	\$3,880.88	\$15,388.97		\$41,522.76
800 Other Objects				

LEA : 124150503 Avon Grove SD

Printed 11/2/2018 8:02:36 AM

General Fund (10)

2300 Support Services – Administration

800 Other Objects

810 Dues and Fees

820 Claims and Judgments Against the LEA

Total Other Objects

Total 2300 Support Services – Administration

Elementary

Secondary

Federal

Total

3,560.00

4,148.00

33,719.00

121,672.00

\$3,560.00

\$4,148.00

\$155,391.00

\$1,118,050.43

\$1,656,922.59

\$4,149,937.27

General Fund (10)

2310 Board Services

Elementary

Secondary

Federal

Total

300 Purchased Professional and Technical Services

330 Other Professional Services 90,900.00

390 Other Purchased Professional and Technical Services 21,500.00

Total Purchased Professional and Technical Services \$112,400.00

500 Other Purchased Services

520 Insurance – General 60,767.20

549 Other Advertising/Public Relations 614.71

Total Other Purchased Services \$61,381.91

600 Supplies

610 General Supplies 3,835.93

640 Books and Periodicals 156.00

650 Supplies & Fees – Technology Related 199.99

Total Supplies \$4,191.92

800 Other Objects

810 Dues and Fees 15,625.00

820 Claims and Judgments Against the LEA 121,672.00

Total Other Objects \$137,297.00

Total 2310 Board Services \$315,270.83

General Fund (10)

2330 Tax Assessment and Collection Services

Elementary

Secondary

Federal

Total

300 Purchased Professional and Technical Services

310 Official / Administrative Services

91,459.13

Total Purchased Professional and Technical Services

\$91,459.13

Total 2330 Tax Assessment and Collection Services

\$91,459.13

General Fund (10)

2350 Legal and Accounting Services

Elementary

Secondary

Federal

Total

300 Purchased Professional and Technical Services

330 Other Professional Services

260,373.33

390 Other Purchased Professional and Technical Services

65,000.00

Total Purchased Professional and Technical Services

\$325,373.33

500 Other Purchased Services

599 Other Miscellaneous Purchased Services

1,182.50

Total Other Purchased Services

\$1,182.50

Total 2350 Legal and Accounting Services

\$326,555.83

General Fund (10)

	<u>Elementary</u>	<u>Secondary</u>	<u>Federal</u>	<u>Total</u>
2360 Office of the Superintendent / Executive Director Services				
100 Personnel Services – Salaries				
100 Personnel Services – Salaries				380,698.57
Total Personnel Services – Salaries				\$380,698.57
200 Personnel Services – Employee Benefits				
210 Group Insurance – Contracted Provider				1,358.25
220 Social Security Contributions				22,768.76
230 PSERS Retirement Contributions				110,097.34
250 Unemployment Compensation				141.25
260 Workers' Compensation				2,281.87
270 Group Insurance – Self-Insurance				32,262.66
280 Other Post-Employment Benefits (OPEB)				22,191.15
291 Other Retirement Plans				3,328.80
292 Health Savings Accounts				3,000.00
299 All Other Employee Benefits				422.50
Total Personnel Services – Employee Benefits				\$197,852.58
300 Purchased Professional and Technical Services				
324 Professional Educational Services – Employee Training and Development Services				349.00
330 Other Professional Services				16,552.50
390 Other Purchased Professional and Technical Services				586.00
Total Purchased Professional and Technical Services				\$17,487.50
500 Other Purchased Services				
530 Communications	372.64	372.64		745.28
550 Printing and Binding				435.00
580 Travel				3,119.10
591 Services Purchased Locally				98.72
Total Other Purchased Services	\$372.64	\$372.64		\$4,398.10
600 Supplies				
610 General Supplies				1,825.32
630 Food				4,516.38
640 Books and Periodicals				2,967.30
Total Supplies				\$9,309.00
800 Other Objects				
810 Dues and Fees				10,386.00
Total Other Objects				\$10,386.00
Total 2360 Office of the Superintendent / Executive Director Services	\$372.64	\$372.64		\$620,131.75

General Fund (10)

2380 Office of the Principal Services

	<u>Elementary</u>	<u>Secondary</u>	<u>Federal</u>	<u>Total</u>
100 Personnel Services – Salaries				
100 Personnel Services – Salaries	684,446.89	1,014,884.55		1,699,331.44
Total Personnel Services – Salaries	\$684,446.89	\$1,014,884.55		\$1,699,331.44
200 Personnel Services – Employee Benefits				
210 Group Insurance – Contracted Provider	4,186.68	4,186.68		8,373.36
220 Social Security Contributions	51,625.03	74,415.41		126,040.44
230 PSERS Retirement Contributions	218,121.36	323,791.30		541,912.66
250 Unemployment Compensation	374.99	491.09		866.08
260 Workers' Compensation	3,942.70	5,830.49		9,773.19
270 Group Insurance – Self-Insurance	117,902.89	163,952.75		281,855.64
280 Other Post-Employment Benefits (OPEB)	12,300.49	12,300.48		24,600.97
292 Health Savings Accounts	13,500.00	18,000.00		31,500.00
Total Personnel Services – Employee Benefits	\$421,954.14	\$602,968.20		\$1,024,922.34
300 Purchased Professional and Technical Services				
324 Professional Educational Services – Employee Training and Development Services	900.00	143.00		1,043.00
330 Other Professional Services		4,400.00		4,400.00
Total Purchased Professional and Technical Services	\$900.00	\$4,543.00		\$5,443.00
400 Purchased Property Services				
410 Cleaning Services	739.00	766.50		1,505.50
430 Repairs and Maintenance Services	200.00	278.98		478.98
440 Rentals		5,088.65		5,088.65
Total Purchased Property Services	\$939.00	\$6,134.13		\$7,073.13
500 Other Purchased Services				
530 Communications	1,126.78	6,205.98		7,332.76
580 Travel	870.10	2,277.12		3,147.22
Total Other Purchased Services	\$1,996.88	\$8,483.10		\$10,479.98
600 Supplies				
610 General Supplies	3,368.17	11,026.04		14,394.21
630 Food		1,866.60		1,866.60
640 Books and Periodicals	486.55	266.31		752.86
650 Supplies & Fees – Technology Related	26.16	2,230.02		2,256.18
Total Supplies	\$3,880.88	\$15,388.97		\$19,269.85
800 Other Objects				
810 Dues and Fees	3,560.00	4,148.00		7,708.00
Total Other Objects	\$3,560.00	\$4,148.00		\$7,708.00
Total 2380 Office of the Principal Services	\$1,117,677.79	\$1,656,549.95		\$2,774,227.74

General Fund (10)

	<u>Elementary</u>	<u>Secondary</u>	<u>Federal</u>	<u>Total</u>
2390 Other Administration Services				
400 <u>Purchased Property Services</u>				
440 Rentals				13,540.00
Total Purchased Property Services				\$13,540.00
600 <u>Supplies</u>				
610 General Supplies				8,751.99
Total Supplies				\$8,751.99
Total 2390 Other Administration Services				\$22,291.99

General Fund (10)

	<u>Elementary</u>	<u>Secondary</u>	<u>Federal</u>	<u>Total</u>
2400 Support Services – Pupil Health				
100 Personnel Services – Salaries				
100 Personnel Services – Salaries				496,144.91
Total Personnel Services – Salaries				\$496,144.91
200 Personnel Services – Employee Benefits				
210 Group Insurance – Contracted Provider				1,620.42
220 Social Security Contributions				36,845.56
230 PSERS Retirement Contributions				160,884.02
250 Unemployment Compensation				430.64
260 Workers' Compensation				2,840.62
270 Group Insurance – Self-Insurance				107,507.69
292 Health Savings Accounts				21,000.00
Total Personnel Services – Employee Benefits				\$331,128.95
300 Purchased Professional and Technical Services				
322 Professional Educational Services – Ius				33,985.66
330 Other Professional Services				4,451.25
Total Purchased Professional and Technical Services				\$38,436.91
400 Purchased Property Services				
430 Repairs and Maintenance Services				982.00
440 Rentals				1,153.12
Total Purchased Property Services				\$2,135.12
500 Other Purchased Services				
530 Communications				2,457.72
Total Other Purchased Services				\$2,457.72
600 Supplies				
610 General Supplies				13,141.23
650 Supplies & Fees – Technology Related				8,687.00
Total Supplies				\$21,828.23
Total 2400 Support Services – Pupil Health				\$892,131.84

General Fund (10)

2430 Dental Services

Elementary

Secondary

Federal

Total

100 Personnel Services – Salaries

100 Personnel Services – Salaries

558.09

Total Personnel Services – Salaries

\$558.09

200 Personnel Services – Employee Benefits

220 Social Security Contributions

42.63

230 PSERS Retirement Contributions

181.22

250 Unemployment Compensation

1.94

260 Workers' Compensation

3.20

Total Personnel Services – Employee Benefits

\$228.99

600 Supplies

610 General Supplies

949.61

Total Supplies

\$949.61

Total 2430 Dental Services

\$1,736.69

General Fund (10)

2440 Nursing Services

	<u>Elementary</u>	<u>Secondary</u>	<u>Federal</u>	<u>Total</u>
100 Personnel Services – Salaries				
100 Personnel Services – Salaries				495,586.82
Total Personnel Services – Salaries				\$495,586.82
200 Personnel Services – Employee Benefits				
210 Group Insurance – Contracted Provider				1,620.42
220 Social Security Contributions				36,802.93
230 PSERS Retirement Contributions				160,702.80
250 Unemployment Compensation				428.70
260 Workers' Compensation				2,837.42
270 Group Insurance – Self-Insurance				107,507.69
292 Health Savings Accounts				21,000.00
Total Personnel Services – Employee Benefits				\$330,899.96
300 Purchased Professional and Technical Services				
322 Professional Educational Services – Ius				33,985.66
330 Other Professional Services				4,451.25
Total Purchased Professional and Technical Services				\$38,436.91
400 Purchased Property Services				
430 Repairs and Maintenance Services				982.00
440 Rentals				1,153.12
Total Purchased Property Services				\$2,135.12
500 Other Purchased Services				
530 Communications				2,457.72
Total Other Purchased Services				\$2,457.72
600 Supplies				
610 General Supplies				12,191.62
650 Supplies & Fees – Technology Related				8,687.00
Total Supplies				\$20,878.62
Total 2440 Nursing Services				\$890,395.15

General Fund (10)

2500 Support Services – Business

Elementary Secondary Federal Total

100 Personnel Services – Salaries

100 Personnel Services – Salaries 514,678.74

Total Personnel Services – Salaries \$514,678.74

200 Personnel Services – Employee Benefits

210 Group Insurance – Contracted Provider 2,430.53
 220 Social Security Contributions 36,984.96
 230 PSERS Retirement Contributions 163,473.73
 250 Unemployment Compensation 277.60
 260 Workers' Compensation 2,956.82
 270 Group Insurance – Self-Insurance 118,047.37
 280 Other Post-Employment Benefits (OPEB) 10,607.48
 292 Health Savings Accounts 5,500.00

Total Personnel Services – Employee Benefits \$340,278.49

300 Purchased Professional and Technical Services

324 Professional Educational Services – Employee Training and Development Services 1,177.00
 330 Other Professional Services 11,603.50
 390 Other Purchased Professional and Technical Services 430.00

Total Purchased Professional and Technical Services \$13,210.50

400 Purchased Property Services

410 Cleaning Services 877.00
 440 Rentals 468.00

Total Purchased Property Services \$1,345.00

500 Other Purchased Services

530 Communications 13,311.44
 580 Travel 1,772.83

Total Other Purchased Services \$15,084.27

600 Supplies

610 General Supplies 10,385.69
 650 Supplies & Fees – Technology Related 288.00

Total Supplies \$10,673.69

800 Other Objects

810 Dues and Fees 4,039.47

Total Other Objects \$4,039.47

Total 2500 Support Services – Business \$899,310.16

General Fund (10)

2510 Fiscal Services

Elementary Secondary Federal Total

100	<u>Personnel Services – Salaries</u>				
	100 Personnel Services – Salaries				514,678.74
Total Personnel Services – Salaries					\$514,678.74
200	<u>Personnel Services – Employee Benefits</u>				
	210 Group Insurance – Contracted Provider				2,430.53
	220 Social Security Contributions				36,984.96
	230 PSERS Retirement Contributions				163,473.73
	250 Unemployment Compensation				277.60
	260 Workers' Compensation				2,956.82
	270 Group Insurance – Self-Insurance				118,047.37
	280 Other Post-Employment Benefits (OPEB)				10,607.48
	292 Health Savings Accounts				5,500.00
Total Personnel Services – Employee Benefits					\$340,278.49
300	<u>Purchased Professional and Technical Services</u>				
	324 Professional Educational Services – Employee Training and Development Services				1,177.00
	330 Other Professional Services				11,603.50
	390 Other Purchased Professional and Technical Services				430.00
Total Purchased Professional and Technical Services					\$13,210.50
400	<u>Purchased Property Services</u>				
	410 Cleaning Services				877.00
	440 Rentals				468.00
Total Purchased Property Services					\$1,345.00
500	<u>Other Purchased Services</u>				
	530 Communications				13,311.44
	580 Travel				1,772.83
Total Other Purchased Services					\$15,084.27
600	<u>Supplies</u>				
	610 General Supplies				10,385.69
	650 Supplies & Fees – Technology Related				288.00
Total Supplies					\$10,673.69
800	<u>Other Objects</u>				
	810 Dues and Fees				4,039.47
Total Other Objects					\$4,039.47
Total 2510 Fiscal Services					\$899,310.16

General Fund (10)

	<u>Elementary</u>	<u>Secondary</u>	<u>Federal</u>	<u>Total</u>
2511 Supervision of Fiscal Services - Head of Component				
100 Personnel Services – Salaries				
100 Personnel Services – Salaries				216,566.44
Total Personnel Services – Salaries				\$216,566.44
200 Personnel Services – Employee Benefits				
210 Group Insurance – Contracted Provider				1,012.78
220 Social Security Contributions				14,623.29
230 PSERS Retirement Contributions				69,725.05
250 Unemployment Compensation				69.61
260 Workers' Compensation				1,244.07
270 Group Insurance – Self-Insurance				35,811.43
280 Other Post-Employment Benefits (OPEB)				10,607.48
Total Personnel Services – Employee Benefits				\$133,093.71
300 Purchased Professional and Technical Services				
324 Professional Educational Services – Employee Training and Development Services				1,177.00
330 Other Professional Services				11,603.50
390 Other Purchased Professional and Technical Services				430.00
Total Purchased Professional and Technical Services				\$13,210.50
400 Purchased Property Services				
410 Cleaning Services				877.00
440 Rentals				468.00
Total Purchased Property Services				\$1,345.00
500 Other Purchased Services				
530 Communications				13,311.44
580 Travel				1,772.83
Total Other Purchased Services				\$15,084.27
600 Supplies				
610 General Supplies				10,385.69
650 Supplies & Fees – Technology Related				288.00
Total Supplies				\$10,673.69
800 Other Objects				
810 Dues and Fees				4,039.47
Total Other Objects				\$4,039.47
Total 2511 Supervision of Fiscal Services - Head of Component				\$394,013.08

General Fund (10)

2513 Receiving and Disbursing Funds Services

Elementary

Secondary

Federal

Total

100 Personnel Services – Salaries

100 Personnel Services – Salaries

38,653.47

Total Personnel Services – Salaries

\$38,653.47

200 Personnel Services – Employee Benefits

210 Group Insurance – Contracted Provider

178.50

220 Social Security Contributions

2,761.22

230 PSERS Retirement Contributions

12,552.05

250 Unemployment Compensation

34.82

260 Workers' Compensation

222.89

270 Group Insurance – Self-Insurance

21,513.96

Total Personnel Services – Employee Benefits

\$37,263.44

Total 2513 Receiving and Disbursing Funds Services

\$75,916.91

General Fund (10)

2514 Payroll Services

100 Personnel Services – Salaries

	<u>Elementary</u>	<u>Secondary</u>	<u>Federal</u>	<u>Total</u>
100 Personnel Services – Salaries				51,577.74
Total Personnel Services – Salaries				\$51,577.74
200 Personnel Services – Employee Benefits				
210 Group Insurance – Contracted Provider				217.62
220 Social Security Contributions				3,898.26
230 PSERS Retirement Contributions				16,747.98
250 Unemployment Compensation				34.81
260 Workers' Compensation				296.29
270 Group Insurance – Self-Insurance				17,864.86
Total Personnel Services – Employee Benefits				\$39,059.82
Total 2514 Payroll Services				\$90,637.56

General Fund (10)

2515 Financial Accounting Services

Elementary

Secondary

Federal

Total

100 Personnel Services – Salaries

100 Personnel Services – Salaries

207,881.09

Total Personnel Services – Salaries

\$207,881.09

200 Personnel Services – Employee Benefits

210 Group Insurance – Contracted Provider

1,021.63

220 Social Security Contributions

15,702.19

230 PSERS Retirement Contributions

64,448.65

250 Unemployment Compensation

138.36

260 Workers' Compensation

1,193.57

270 Group Insurance – Self-Insurance

42,857.12

292 Health Savings Accounts

5,500.00

Total Personnel Services – Employee Benefits

\$130,861.52

Total 2515 Financial Accounting Services

\$338,742.61

General Fund (10)

2600 Operation and Maintenance of Plant Services

Elementary Secondary Federal Total

100 Personnel Services – Salaries
 100 Personnel Services – Salaries 435,333.52

Total Personnel Services – Salaries \$435,333.52

200 Personnel Services – Employee Benefits

210 Group Insurance – Contracted Provider 1,713.69
 220 Social Security Contributions 32,154.22
 230 PSERS Retirement Contributions 137,780.78
 250 Unemployment Compensation 339.61
 260 Workers' Compensation 2,510.52
 270 Group Insurance – Self-Insurance 144,049.42
 280 Other Post-Employment Benefits (OPEB) 10,607.48

Total Personnel Services – Employee Benefits \$329,155.72

300 Purchased Professional and Technical Services

330 Other Professional Services 10,453.06
 340 Technical Services 7,931.63
 350 Security / Safety Services 33,272.51

Total Purchased Professional and Technical Services \$51,657.20

400 Purchased Property Services

410 Cleaning Services 1,146,836.06
 420 Utility Services 147,277.15
 430 Repairs and Maintenance Services 213,768.96
 440 Rentals 235,700.14
 450 Construction Services 3,532.00
 460 Extermination Services 8,580.00

Total Purchased Property Services \$1,755,694.31

500 Other Purchased Services

521 Fire Insurance 132,535.00
 522 Automotive Liability Insurance 9,576.00
 523 General Property and Liability Insurance 33,586.00
 530 Communications 6,098.09
 580 Travel 64.50
 596 Direct Payments To Intermediate Units 107,310.00

Total Other Purchased Services \$289,169.59

600 Supplies

610 General Supplies 99,205.26 99,255.14 198,460.40
 620 Energy 719,093.61
 650 Supplies & Fees – Technology Related 15,950.84

Total Supplies \$99,205.26 \$99,255.14 \$933,504.85

800 Other Objects

810 Dues and Fees 5,623.00
 820 Claims and Judgments Against the LEA 515.68

Total Other Objects \$6,138.68

Total 2600 Operation and Maintenance of Plant Services \$99,205.26 \$99,255.14 \$3,800,653.87

General Fund (10)

	<u>Elementary</u>	<u>Secondary</u>	<u>Federal</u>	<u>Total</u>
2610 Supervision of Operation and Maintenance of Plant Services				
100 Personnel Services – Salaries				
100 Personnel Services – Salaries				404,723.03
Total Personnel Services – Salaries				\$404,723.03
200 Personnel Services – Employee Benefits				
210 Group Insurance – Contracted Provider				1,551.63
220 Social Security Contributions				29,821.62
230 PSERS Retirement Contributions				127,840.66
250 Unemployment Compensation				307.05
260 Workers' Compensation				2,334.01
270 Group Insurance – Self-Insurance				129,446.48
280 Other Post-Employment Benefits (OPEB)				10,607.48
Total Personnel Services – Employee Benefits				\$301,908.93
300 Purchased Professional and Technical Services				
330 Other Professional Services				8,348.06
340 Technical Services				5,876.63
Total Purchased Professional and Technical Services				\$14,224.69
500 Other Purchased Services				
521 Fire Insurance				132,535.00
523 General Property and Liability Insurance				33,586.00
530 Communications				6,098.09
580 Travel				64.50
596 Direct Payments To Intermediate Units				107,310.00
Total Other Purchased Services				\$279,593.59
600 Supplies				
610 General Supplies	2,080.41	2,080.41		4,160.82
650 Supplies & Fees – Technology Related				13,475.84
Total Supplies	\$2,080.41	\$2,080.41		\$17,636.66
800 Other Objects				
810 Dues and Fees				5,476.00
Total Other Objects				\$5,476.00
Total 2610 Supervision of Operation and Maintenance of Plant Services	\$2,080.41	\$2,080.41		\$1,023,562.90

General Fund (10)

2611 Supervision of Operation and Maintenance of Plant Services – Head of Component

Elementary

Secondary

Federal

Total

500 Other Purchased Services

596 Direct Payments To Intermediate Units

107,310.00

Total Other Purchased Services

\$107,310.00

Total 2611 Supervision of Operation and Maintenance of Plant Services – Head of Component

\$107,310.00

General Fund (10)

2619 Supervision of Operation and Maintenance of Plant Services – All Other Supervision

	<u>Elementary</u>	<u>Secondary</u>	<u>Federal</u>	<u>Total</u>
100 Personnel Services – Salaries				
100 Personnel Services – Salaries				404,723.03
Total Personnel Services – Salaries				\$404,723.03
200 Personnel Services – Employee Benefits				
210 Group Insurance – Contracted Provider				1,551.63
220 Social Security Contributions				29,821.62
230 PSERS Retirement Contributions				127,840.66
250 Unemployment Compensation				307.05
260 Workers' Compensation				2,334.01
270 Group Insurance – Self-Insurance				129,446.48
280 Other Post-Employment Benefits (OPEB)				10,607.48
Total Personnel Services – Employee Benefits				\$301,908.93
300 Purchased Professional and Technical Services				
330 Other Professional Services				8,348.06
340 Technical Services				5,876.63
Total Purchased Professional and Technical Services				\$14,224.69
500 Other Purchased Services				
521 Fire Insurance				132,535.00
523 General Property and Liability Insurance				33,586.00
530 Communications				6,098.09
580 Travel				64.50
Total Other Purchased Services				\$172,283.59
600 Supplies				
610 General Supplies	2,080.41	2,080.41		4,160.82
650 Supplies & Fees – Technology Related				13,475.84
Total Supplies	\$2,080.41	\$2,080.41		\$17,636.66
800 Other Objects				
810 Dues and Fees				5,476.00
Total Other Objects				\$5,476.00
Total 2619 Supervision of Operation and Maintenance of Plant Services – All Other Supervision	\$2,080.41	\$2,080.41		\$916,252.90

General Fund (10)

	<u>Elementary</u>	<u>Secondary</u>	<u>Federal</u>	<u>Total</u>
2620 Operation of Buildings Services				
400 <u>Purchased Property Services</u>				
410 Cleaning Services				1,038,532.92
420 Utility Services				70,673.92
430 Repairs and Maintenance Services				175,564.26
440 Rentals				235,328.74
450 Construction Services				3,532.00
460 Extermination Services				8,580.00
Total Purchased Property Services				\$1,532,211.84
600 <u>Supplies</u>				
610 General Supplies	81,364.28	81,364.25		162,728.53
620 Energy				716,599.22
Total Supplies	\$81,364.28	\$81,364.25		\$879,327.75
Total 2620 Operation of Buildings Services	\$81,364.28	\$81,364.25		\$2,411,539.59

General Fund (10)

	<u>Elementary</u>	<u>Secondary</u>	<u>Federal</u>	<u>Total</u>
2630 Care and Upkeep of Grounds Services				
300 <u>Purchased Professional and Technical Services</u>				
330 Other Professional Services				2,105.00
Total Purchased Professional and Technical Services				\$2,105.00
400 <u>Purchased Property Services</u>				
410 Cleaning Services				108,303.14
430 Repairs and Maintenance Services				19,983.43
Total Purchased Property Services				\$128,286.57
600 <u>Supplies</u>				
610 General Supplies	11,835.70	11,835.69		23,671.39
Total Supplies	\$11,835.70	\$11,835.69		\$23,671.39
Total 2630 Care and Upkeep of Grounds Services	\$11,835.70	\$11,835.69		\$154,062.96

General Fund (10)

	<u>Elementary</u>	<u>Secondary</u>	<u>Federal</u>	<u>Total</u>
2640 Care and Upkeep of Equipment Services				
400 <u>Purchased Property Services</u>				
430 Repairs and Maintenance Services				1,873.90
440 Rentals				371.40
Total Purchased Property Services				\$2,245.30
600 <u>Supplies</u>				
610 General Supplies	10.26	10.26		20.52
Total Supplies	\$10.26	\$10.26		\$20.52
Total 2640 Care and Upkeep of Equipment Services	\$10.26	\$10.26		\$2,265.82

General Fund (10)

	<u>Elementary</u>	<u>Secondary</u>	<u>Federal</u>	<u>Total</u>
2650 Vehicle Operation and Maintenance Services (Other Than Student Transportation Vehicles)				
400 <u>Purchased Property Services</u>				
430 Repairs and Maintenance Services				3,470.54
Total Purchased Property Services				\$3,470.54
500 <u>Other Purchased Services</u>				
522 Automotive Liability Insurance				9,576.00
Total Other Purchased Services				\$9,576.00
600 <u>Supplies</u>				
610 General Supplies	3,090.74	3,090.74		6,181.48
620 Energy				2,494.39
Total Supplies	\$3,090.74	\$3,090.74		\$8,675.87
800 <u>Other Objects</u>				
810 Dues and Fees				147.00
Total Other Objects				\$147.00
Total 2650 Vehicle Operation and Maintenance Services (Other Than Student Transportation Vehicles)	\$3,090.74	\$3,090.74		\$21,869.41

General Fund (10)

2660 Safety and Security Services

100 Personnel Services – Salaries

	<u>Elementary</u>	<u>Secondary</u>	<u>Federal</u>	<u>Total</u>
100 Personnel Services – Salaries				30,610.49
Total Personnel Services – Salaries				\$30,610.49
200 Personnel Services – Employee Benefits				
210 Group Insurance – Contracted Provider				162.06
220 Social Security Contributions				2,332.60
230 PSERS Retirement Contributions				9,940.12
250 Unemployment Compensation				32.56
260 Workers' Compensation				176.51
270 Group Insurance – Self-Insurance				14,602.94
Total Personnel Services – Employee Benefits				\$27,246.79
300 Purchased Professional and Technical Services				
350 Security / Safety Services				33,272.51
Total Purchased Professional and Technical Services				\$33,272.51
400 Purchased Property Services				
430 Repairs and Maintenance Services				12,876.83
Total Purchased Property Services				\$12,876.83
600 Supplies				
610 General Supplies	823.87	873.79		1,697.66
650 Supplies & Fees – Technology Related				2,475.00
Total Supplies	\$823.87	\$873.79		\$4,172.66
800 Other Objects				
820 Claims and Judgments Against the LEA				515.68
Total Other Objects				\$515.68
Total 2660 Safety and Security Services	\$823.87	\$873.79		\$108,694.96

General Fund (10)

	<u>Elementary</u>	<u>Secondary</u>	<u>Federal</u>	<u>Total</u>
2690 Other Operation and Maintenance of Plant Services				
300 <u>Purchased Professional and Technical Services</u>				
340 Technical Services				2,055.00
Total Purchased Professional and Technical Services				\$2,055.00
400 <u>Purchased Property Services</u>				
420 Utility Services				76,603.23
Total Purchased Property Services				\$76,603.23
Total 2690 Other Operation and Maintenance of Plant Services				\$78,658.23

General Fund (10)

	<u>Elementary</u>	<u>Secondary</u>	<u>Federal</u>	<u>Total</u>
2700 Student Transportation Services				
100 Personnel Services – Salaries				
100 Personnel Services – Salaries				52,197.96
Total Personnel Services – Salaries				\$52,197.96
200 Personnel Services – Employee Benefits				
210 Group Insurance – Contracted Provider				209.70
220 Social Security Contributions				3,896.56
230 PSERS Retirement Contributions				16,949.43
250 Unemployment Compensation				34.81
260 Workers' Compensation				299.76
270 Group Insurance – Self-Insurance				6,708.73
Total Personnel Services – Employee Benefits				\$28,098.99
300 Purchased Professional and Technical Services				
390 Other Purchased Professional and Technical Services				445.00
Total Purchased Professional and Technical Services				\$445.00
400 Purchased Property Services				
430 Repairs and Maintenance Services				1,725.00
Total Purchased Property Services				\$1,725.00
500 Other Purchased Services				
511 Student Transportation Services from Another LEA Within the State				17,850.00
513 Contracted Carriers			1,764.00	5,966,177.85
516 Student Transportation Services From the IU				7,271.30
530 Communications				1,320.00
580 Travel				209.15
Total Other Purchased Services			\$1,764.00	\$5,992,828.30
600 Supplies				
610 General Supplies				10,474.56
650 Supplies & Fees – Technology Related				6,837.77
Total Supplies				\$17,312.33
Total 2700 Student Transportation Services			\$1,764.00	\$6,092,607.58

General Fund (10)

2710 Supervision of Student Transportation Services

Elementary

Secondary

Federal

Total

100 Personnel Services – Salaries

100 Personnel Services – Salaries

52,197.96

Total Personnel Services – Salaries

\$52,197.96

200 Personnel Services – Employee Benefits

210 Group Insurance – Contracted Provider

209.70

220 Social Security Contributions

3,896.56

230 PSERS Retirement Contributions

16,949.43

250 Unemployment Compensation

34.81

260 Workers' Compensation

299.76

270 Group Insurance – Self-Insurance

6,708.73

Total Personnel Services – Employee Benefits

\$28,098.99

300 Purchased Professional and Technical Services

390 Other Purchased Professional and Technical Services

445.00

Total Purchased Professional and Technical Services

\$445.00

500 Other Purchased Services

513 Contracted Carriers

(2,861.88)

530 Communications

1,320.00

580 Travel

209.15

Total Other Purchased Services

(\$1,332.73)

600 Supplies

610 General Supplies

625.00

650 Supplies & Fees – Technology Related

6,837.77

Total Supplies

\$7,462.77

Total 2710 Supervision of Student Transportation Services

\$86,871.99

General Fund (10)

2711 Supervision of Student Transportation Services – Head of Component

Elementary

Secondary

Federal

Total

100 Personnel Services – Salaries

100 Personnel Services – Salaries

52,197.96

Total Personnel Services – Salaries

\$52,197.96

200 Personnel Services – Employee Benefits

210 Group Insurance – Contracted Provider

209.70

220 Social Security Contributions

3,896.56

230 PSERS Retirement Contributions

16,949.43

250 Unemployment Compensation

34.81

260 Workers' Compensation

299.76

270 Group Insurance – Self-Insurance

6,708.73

Total Personnel Services – Employee Benefits

\$28,098.99

300 Purchased Professional and Technical Services

390 Other Purchased Professional and Technical Services

445.00

Total Purchased Professional and Technical Services

\$445.00

500 Other Purchased Services

513 Contracted Carriers

(2,861.88)

530 Communications

1,320.00

580 Travel

209.15

Total Other Purchased Services

(\$1,332.73)

600 Supplies

610 General Supplies

625.00

650 Supplies & Fees – Technology Related

6,837.77

Total Supplies

\$7,462.77

Total 2711 Supervision of Student Transportation Services – Head of Component

\$86,871.99

General Fund (10)

2720 Vehicle Operation Services

Elementary

Secondary

Federal

Total

500 Other Purchased Services

513 Contracted Carriers

1,764.00

5,206,114.43

516 Student Transportation Services From the IU

7,271.30

Total Other Purchased Services

\$1,764.00

\$5,213,385.73

600 Supplies

610 General Supplies

1,055.56

Total Supplies

\$1,055.56

Total 2720 Vehicle Operation Services

\$1,764.00

\$5,214,441.29

General Fund (10)

2730 Monitoring Services

Elementary

Secondary

Federal

Total

500 Other Purchased Services

513 Contracted Carriers

156,100.20

Total Other Purchased Services

\$156,100.20

Total 2730 Monitoring Services

\$156,100.20

General Fund (10)

	<u>Elementary</u>	<u>Secondary</u>	<u>Federal</u>	<u>Total</u>
2740 Vehicle Servicing and Maintenance Services				
400 <u>Purchased Property Services</u>				
430 Repairs and Maintenance Services				1,725.00
Total Purchased Property Services				\$1,725.00
600 <u>Supplies</u>				
610 General Supplies				8,794.00
Total Supplies				\$8,794.00
Total 2740 Vehicle Servicing and Maintenance Services				\$10,519.00

LEA : 124150503 Avon Grove SD

Printed 11/2/2018 8:02:36 AM

General Fund (10)

2750 Nonpublic Transportation

Elementary

Secondary

Federal

Total

500 Other Purchased Services

511 Student Transportation Services from Another LEA Within the State

17,850.00

513 Contracted Carriers

606,825.10

Total Other Purchased Services

\$624,675.10

Total 2750 Nonpublic Transportation

\$624,675.10

General Fund (10)

2800 Support Services – Central

Elementary Secondary Federal Total

100 Personnel Services – Salaries

100 Personnel Services – Salaries 801,105.12

Total Personnel Services – Salaries \$801,105.12

200 Personnel Services – Employee Benefits

210 Group Insurance – Contracted Provider 3,465.41

220 Social Security Contributions 57,905.84

230 PSERS Retirement Contributions 253,629.21

240 Tuition Reimbursement 107,974.42

250 Unemployment Compensation 465.79

260 Workers' Compensation 3,986.69

270 Group Insurance – Self-Insurance 180,245.26

280 Other Post-Employment Benefits (OPEB) 1,387.14

292 Health Savings Accounts 9,000.00

Total Personnel Services – Employee Benefits \$618,059.76

300 Purchased Professional and Technical Services

322 Professional Educational Services – lus 1,000.00

324 Professional Educational Services – Employee Training and Development Services 10,026.90

330 Other Professional Services 179,805.37

340 Technical Services 340,899.06

Total Purchased Professional and Technical Services \$531,731.33

400 Purchased Property Services

440 Rentals 8,949.80

Total Purchased Property Services \$8,949.80

500 Other Purchased Services

530 Communications 79,207.32

549 Other Advertising/Public Relations 75.00

550 Printing and Binding 6,200.95

580 Travel 8,881.12

Total Other Purchased Services \$94,364.39

600 Supplies

610 General Supplies 14,812.67

630 Food 330.00

640 Books and Periodicals 1,682.66

650 Supplies & Fees – Technology Related 66,371.46

Total Supplies \$83,196.79

700 Property

756 Capitalized Technology Hardware and Equipment – Original 493,319.76

766 Capitalized Technology Hardware and Equipment – Replacement 461,363.56

Total Property \$954,683.32

800 Other Objects

810 Dues and Fees 1,774.00

LEA : 124150503 Avon Grove SD

Printed 11/2/2018 8:02:36 AM

General Fund (10)

2800 Support Services – Central

Elementary

Secondary

Federal

Total

Total Other Objects				\$1,774.00
Total 2800 Support Services – Central				\$3,093,864.51

General Fund (10)

2810 Planning, Research, Development and Evaluation Services

Elementary

Secondary

Federal

Total

100 Personnel Services – Salaries

100 Personnel Services – Salaries

593,562.96

Total Personnel Services – Salaries

\$593,562.96

200 Personnel Services – Employee Benefits

210 Group Insurance – Contracted Provider

2,466.84

220 Social Security Contributions

43,524.22

230 PSERS Retirement Contributions

187,211.43

250 Unemployment Compensation

396.19

260 Workers' Compensation

2,789.47

270 Group Insurance – Self-Insurance

146,060.30

280 Other Post-Employment Benefits (OPEB)

1,387.14

292 Health Savings Accounts

9,000.00

Total Personnel Services – Employee Benefits

\$392,835.59

300 Purchased Professional and Technical Services

324 Professional Educational Services – Employee Training and Development Services

2,667.50

330 Other Professional Services

122,732.00

340 Technical Services

270,105.39

Total Purchased Professional and Technical Services

\$395,504.89

500 Other Purchased Services

530 Communications

39,547.53

580 Travel

7,136.81

Total Other Purchased Services

\$46,684.34

600 Supplies

610 General Supplies

8,849.27

630 Food

330.00

640 Books and Periodicals

1,682.66

650 Supplies & Fees – Technology Related

61,646.43

Total Supplies

\$72,508.36

700 Property

756 Capitalized Technology Hardware and Equipment – Original

493,319.76

766 Capitalized Technology Hardware and Equipment – Replacement

461,363.56

Total Property

\$954,683.32

800 Other Objects

810 Dues and Fees

1,270.00

Total Other Objects

\$1,270.00

Total 2810 Planning, Research, Development and Evaluation Services

\$2,457,049.46

General Fund (10)

2820 Information Services

Elementary

Secondary

Federal

Total

300 Purchased Professional and Technical Services

330 Other Professional Services

57,073.37

Total Purchased Professional and Technical Services

\$57,073.37

500 Other Purchased Services

530 Communications

39,296.82

550 Printing and Binding

6,200.95

Total Other Purchased Services

\$45,497.77

Total 2820 Information Services

\$102,571.14

General Fund (10)

2823 Public Information Services

Elementary

Secondary

Federal

Total

300 Purchased Professional and Technical Services

330 Other Professional Services

57,073.37

Total Purchased Professional and Technical Services

\$57,073.37

500 Other Purchased Services

530 Communications

39,296.82

550 Printing and Binding

6,200.95

Total Other Purchased Services

\$45,497.77

Total 2823 Public Information Services

\$102,571.14

General Fund (10)

2830 Staff Services

Elementary Secondary Federal Total

100 Personnel Services – Salaries
100 Personnel Services – Salaries 207,542.16

Total Personnel Services – Salaries \$207,542.16

200 Personnel Services – Employee Benefits
210 Group Insurance – Contracted Provider 998.57
220 Social Security Contributions 14,381.62
230 PSERS Retirement Contributions 66,417.78
240 Tuition Reimbursement 107,974.42
250 Unemployment Compensation 69.60
260 Workers' Compensation 1,197.22
270 Group Insurance – Self-Insurance 34,184.96

Total Personnel Services – Employee Benefits \$225,224.17

300 Purchased Professional and Technical Services
322 Professional Educational Services – lus 1,000.00
324 Professional Educational Services – Employee Training and Development Services 7,359.40
340 Technical Services 502.20

Total Purchased Professional and Technical Services \$8,861.60

500 Other Purchased Services
530 Communications 362.97
549 Other Advertising/Public Relations 75.00
580 Travel 1,744.31

Total Other Purchased Services \$2,182.28

600 Supplies
610 General Supplies 5,371.56
650 Supplies & Fees – Technology Related 4,725.03

Total Supplies \$10,096.59

800 Other Objects
810 Dues and Fees 504.00

Total Other Objects \$504.00

Total 2830 Staff Services \$454,410.80

General Fund (10)

2831 Supervision of Staff Services

Elementary

Secondary

Federal

Total

100 Personnel Services – Salaries

100 Personnel Services – Salaries

207,542.16

Total Personnel Services – Salaries

\$207,542.16

200 Personnel Services – Employee Benefits

210 Group Insurance – Contracted Provider

998.57

220 Social Security Contributions

14,381.62

230 PSERS Retirement Contributions

66,417.78

250 Unemployment Compensation

69.60

260 Workers' Compensation

1,197.22

270 Group Insurance – Self-Insurance

34,184.96

Total Personnel Services – Employee Benefits

\$117,249.75

500 Other Purchased Services

530 Communications

362.97

549 Other Advertising/Public Relations

75.00

Total Other Purchased Services

\$437.97

600 Supplies

610 General Supplies

5,262.61

650 Supplies & Fees – Technology Related

4,725.03

Total Supplies

\$9,987.64

800 Other Objects

810 Dues and Fees

504.00

Total Other Objects

\$504.00

Total 2831 Supervision of Staff Services

\$335,721.52

General Fund (10)

2834 Staff Development Services – Non-Instructional, Certified Staff Only

Elementary

Secondary

Federal

Total

200 Personnel Services – Employee Benefits

240 Tuition Reimbursement

85,271.41

Total Personnel Services – Employee Benefits

\$85,271.41

300 Purchased Professional and Technical Services

322 Professional Educational Services – Ius

1,000.00

324 Professional Educational Services – Employee Training and Development Services

7,359.40

Total Purchased Professional and Technical Services

\$8,359.40

500 Other Purchased Services

580 Travel

1,744.31

Total Other Purchased Services

\$1,744.31

600 Supplies

610 General Supplies

108.95

Total Supplies

\$108.95

Total 2834 Staff Development Services – Non-Instructional, Certified Staff Only

\$95,484.07

General Fund (10)

	<u>Elementary</u>	<u>Secondary</u>	<u>Federal</u>	<u>Total</u>
2836 Staff Development Services – Non-Instructional, Non-Certified Staff Only				
200 Personnel Services – Employee Benefits				
240 Tuition Reimbursement				22,703.01
Total Personnel Services – Employee Benefits				\$22,703.01
300 Purchased Professional and Technical Services				
340 Technical Services				502.20
Total Purchased Professional and Technical Services				\$502.20
Total 2836 Staff Development Services – Non-Instructional, Non-Certified Staff Only				\$23,205.21

General Fund (10)

	<u>Elementary</u>	<u>Secondary</u>	<u>Federal</u>	<u>Total</u>
2840 Data Processing Services				
300 <u>Purchased Professional and Technical Services</u>				
340 Technical Services				70,291.47
Total Purchased Professional and Technical Services				\$70,291.47
400 <u>Purchased Property Services</u>				
440 Rentals				8,949.80
Total Purchased Property Services				\$8,949.80
600 <u>Supplies</u>				
610 General Supplies				591.84
Total Supplies				\$591.84
Total 2840 Data Processing Services				\$79,833.11

General Fund (10)

2900 Other Support Services

Elementary

Secondary

Federal

Total

500 Other Purchased Services

595 IU Payments By Withholding

32,702.98

Total Other Purchased Services

\$32,702.98

800 Other Objects

890 Miscellaneous Expenditures

1,446.84

899 Pass-Through Funds

594,848.38

Total Other Objects

\$596,295.22

Total 2900 Other Support Services

\$628,998.20

General Fund (10)

2910 Support Services Not Listed Elsewhere In the 2000 Series

Elementary

Secondary

Federal

Total

500 Other Purchased Services

595 IU Payments By Withholding

32,702.98

Total Other Purchased Services

\$32,702.98

800 Other Objects

890 Miscellaneous Expenditures

1,446.84

Total Other Objects

\$1,446.84

Total 2910 Support Services Not Listed Elsewhere In the 2000 Series

\$34,149.82

General Fund (10)

2990 Pass-Through Funds

Elementary

Secondary

Federal

Total

800 Other Objects

899 Pass-Through Funds

594,848.38

Total Other Objects

\$594,848.38

Total 2990 Pass-Through Funds

\$594,848.38

General Fund (10)

3000 Operation of Non-Instructional Services

Total

100 Personnel Services – Salaries

100 Personnel Services – Salaries 572,508.04

Total Personnel Services – Salaries \$572,508.04

200 Personnel Services – Employee Benefits

220 Social Security Contributions 43,689.34

230 PSERS Retirement Contributions 179,995.49

250 Unemployment Compensation 1,024.76

260 Workers' Compensation 3,304.91

Total Personnel Services – Employee Benefits \$228,014.50

300 Purchased Professional and Technical Services

324 Professional Educational Services – Employee Training and Development Services 95.00

330 Other Professional Services 98,067.75

390 Other Purchased Professional and Technical Services 1,370.00

Total Purchased Professional and Technical Services \$99,532.75

400 Purchased Property Services

430 Repairs and Maintenance Services 7,386.84

440 Rentals 2,917.17

Total Purchased Property Services \$10,304.01

500 Other Purchased Services

510 Student Transportation Services 122,508.96

520 Insurance – General 13,578.00

530 Communications 1,457.46

580 Travel 5,338.75

Total Other Purchased Services \$142,883.17

600 Supplies

610 General Supplies 87,613.95

630 Food 174.72

650 Supplies & Fees – Technology Related 8,017.31

Total Supplies \$95,805.98

800 Other Objects

810 Dues and Fees 21,791.26

890 Miscellaneous Expenditures 16,886.88

Total Other Objects \$38,678.14

Total 3000 Operation of Non-Instructional Services \$1,187,726.59

General Fund (10)

3200 Student Activities

Elementary Secondary Federal Total

100 Personnel Services – Salaries

100 Personnel Services – Salaries 571,644.04

Total Personnel Services – Salaries \$571,644.04

200 Personnel Services – Employee Benefits

220 Social Security Contributions 43,625.21

230 PSERS Retirement Contributions 179,714.08

250 Unemployment Compensation 1,024.76

260 Workers' Compensation 3,298.19

Total Personnel Services – Employee Benefits \$227,662.24

300 Purchased Professional and Technical Services

324 Professional Educational Services – Employee Training and Development Services 95.00

330 Other Professional Services 98,067.75

390 Other Purchased Professional and Technical Services 1,045.00

Total Purchased Professional and Technical Services \$99,207.75

400 Purchased Property Services

430 Repairs and Maintenance Services 7,386.84

440 Rentals 2,917.17

Total Purchased Property Services \$10,304.01

500 Other Purchased Services

510 Student Transportation Services 122,508.96

520 Insurance – General 13,578.00

530 Communications 1,457.46

580 Travel 5,338.75

Total Other Purchased Services \$142,883.17

600 Supplies

610 General Supplies 87,613.95

630 Food 174.72

650 Supplies & Fees – Technology Related 8,017.31

Total Supplies \$95,805.98

800 Other Objects

810 Dues and Fees 21,791.26

890 Miscellaneous Expenditures 700.00

Total Other Objects \$22,491.26

Total 3200 Student Activities \$1,169,998.45

General Fund (10)

3300 Community Services

Elementary

Secondary

Federal

Total

100 Personnel Services – Salaries

100 Personnel Services – Salaries

864.00

864.00

Total Personnel Services – Salaries

\$864.00

\$864.00

200 Personnel Services – Employee Benefits

220 Social Security Contributions

64.13

64.13

230 PSERS Retirement Contributions

281.41

281.41

260 Workers' Compensation

6.72

6.72

Total Personnel Services – Employee Benefits

\$352.26

\$352.26

300 Purchased Professional and Technical Services

390 Other Purchased Professional and Technical Services

325.00

325.00

Total Purchased Professional and Technical Services

\$325.00

\$325.00

Total 3300 Community Services

\$1,541.26

\$1,541.26

LEA : 124150503 Avon Grove SD

Printed 11/2/2018 8:02:40 AM

General Fund (10)

3400 Scholarships and Awards

Elementary

Secondary

Federal

Total

800 Other Objects

890 Miscellaneous Expenditures

16,186.88

Total Other Objects

\$16,186.88

Total 3400 Scholarships and Awards

\$16,186.88

General Fund (10)

4000 Facilities Acquisition, Construction and Improvement Services

Total

300 Purchased Professional and Technical Services

330 Other Professional Services

22,382.41

Total Purchased Professional and Technical Services

\$22,382.41

Total 4000 Facilities Acquisition, Construction and Improvement Services

\$22,382.41

General Fund (10)

	<u>Elementary</u>	<u>Secondary</u>	<u>Federal</u>	<u>Total</u>
4400 Architecture and Engineering Services / Educational Specifications – Improvements				
300 <u>Purchased Professional and Technical Services</u>				
330 Other Professional Services				22,382.41
Total Purchased Professional and Technical Services				\$22,382.41
Total 4400 Architecture and Engineering Services / Educational Specifications – Improvements				\$22,382.41

General Fund (10)

5000 Other Expenditures and Financing Uses

Total

800 Other Objects

830 Interest 430,365.00

Total Other Objects \$430,365.00

900 Other Uses of Funds

910 Redemption of Principal 2,840,000.00

939 Other Fund Transfers 1,850,000.00

Total Other Uses of Funds \$4,690,000.00

Total 5000 Other Expenditures and Financing Uses \$5,120,365.00

General Fund (10)

	<u>Elementary</u>	<u>Secondary</u>	<u>Federal</u>	<u>Total</u>
5100 Debt Service / Other Expenditures and Financing Uses				
800 Other Objects				
830 Interest				430,365.00
Total Other Objects				\$430,365.00
900 Other Uses of Funds				
910 Redemption of Principal				2,840,000.00
Total Other Uses of Funds				\$2,840,000.00
Total 5100 Debt Service / Other Expenditures and Financing Uses				\$3,270,365.00

General Fund (10)

	<u>Elementary</u>	<u>Secondary</u>	<u>Federal</u>	<u>Total</u>
5110 Debt Service				
800 Other Objects				
830 Interest				430,365.00
Total Other Objects				\$430,365.00
900 Other Uses of Funds				
910 Redemption of Principal				2,840,000.00
Total Other Uses of Funds				\$2,840,000.00
Total 5110 Debt Service				\$3,270,365.00

General Fund (10)

5200 Interfund Transfers – Out

Elementary

Secondary

Federal

Total

900 Other Uses of Funds

939 Other Fund Transfers

1,850,000.00

Total Other Uses of Funds

\$1,850,000.00

Total 5200 Interfund Transfers – Out

\$1,850,000.00

LEA : 124150503 Avon Grove SD

Printed 11/2/2018 8:02:44 AM

General Fund (10)

5230 Capital Projects Fund Transfers

Elementary

Secondary

Federal

Total

900 Other Uses of Funds

939 Other Fund Transfers

1,850,000.00

Total Other Uses of Funds

\$1,850,000.00

Total 5230 Capital Projects Fund Transfers

\$1,850,000.00

Other Capital Projects Fund (39)

2000 Support Services

Total

300 Purchased Professional and Technical Services

330 Other Professional Services

13,859.12

Total Purchased Professional and Technical Services

\$13,859.12

700 Property

766 Capitalized Technology Hardware and Equipment – Replacement

256,835.45

Total Property

\$256,835.45

Total 2000 Support Services

\$270,694.57

Other Capital Projects Fund (39)

2600 Operation and Maintenance of Plant Services

Elementary

Secondary

Federal

Total

300 Purchased Professional and Technical Services

330 Other Professional Services

13,859.12

Total Purchased Professional and Technical Services

\$13,859.12

Total 2600 Operation and Maintenance of Plant Services

\$13,859.12

LEA : 124150503 Avon Grove SD

Printed 11/2/2018 8:02:39 AM

Other Capital Projects Fund (39)

2690 Other Operation and Maintenance of Plant Services

Elementary

Secondary

Federal

Total

300 Purchased Professional and Technical Services

330 Other Professional Services

13,859.12

Total Purchased Professional and Technical Services

\$13,859.12

Total 2690 Other Operation and Maintenance of Plant Services

\$13,859.12

LEA : 124150503 Avon Grove SD

Printed 11/2/2018 8:02:39 AM

Other Capital Projects Fund (39)

2800 Support Services – Central

Elementary

Secondary

Federal

Total

700 Property

766 Capitalized Technology Hardware and Equipment – Replacement

256,835.45

Total Property

\$256,835.45

Total 2800 Support Services – Central

\$256,835.45

Other Capital Projects Fund (39)

2810 Planning, Research, Development and Evaluation Services

Elementary

Secondary

Federal

Total

700 Property

766 Capitalized Technology Hardware and Equipment – Replacement

200,000.00

Total Property

\$200,000.00

Total 2810 Planning, Research, Development and Evaluation Services

\$200,000.00

LEA : 124150503 Avon Grove SD

Printed 11/2/2018 8:02:39 AM

Other Capital Projects Fund (39)

2890 Other Support Services Central

Elementary

Secondary

Federal

Total

700 Property

766 Capitalized Technology Hardware and Equipment – Replacement

56,835.45

Total Property

\$56,835.45

Total 2890 Other Support Services Central

\$56,835.45

Other Capital Projects Fund (39)

4000 Facilities Acquisition, Construction and Improvement Services

Total

400 Purchased Property Services

430 Repairs and Maintenance Services

28,912.35

450 Construction Services

434,803.33

Total Purchased Property Services

\$463,715.68

700 Property

710 Land and Improvements

272,418.80

752 Capital Equipment – Original and Additional

39,883.22

762 Capitalized Equipment - Replacement

6,306.00

Total Property

\$318,608.02

Total 4000 Facilities Acquisition, Construction and Improvement Services

\$782,323.70

Other Capital Projects Fund (39)

4200 Existing Site Improvement Services

Elementary

Secondary

Federal

Total

400 Purchased Property Services

450 Construction Services

73,703.48

Total Purchased Property Services

\$73,703.48

700 Property

710 Land and Improvements

272,418.80

752 Capital Equipment – Original and Additional

39,883.22

762 Capitalized Equipment - Replacement

6,306.00

Total Property

\$318,608.02

Total 4200 Existing Site Improvement Services

\$392,311.50

Other Capital Projects Fund (39)

4500 Building Acquisition and Construction Services – Original and Additional

Elementary

Secondary

Federal

Total

400 Purchased Property Services

450 Construction Services

336,017.70

Total Purchased Property Services

\$336,017.70

Total 4500 Building Acquisition and Construction Services – Original and Additional

\$336,017.70

LEA : 124150503 Avon Grove SD

Printed 11/2/2018 8:02:43 AM

Other Capital Projects Fund (39)

4600 Existing Building Improvement Services

Elementary

Secondary

Federal

Total

400 Purchased Property Services

430 Repairs and Maintenance Services

28,912.35

450 Construction Services

25,082.15

Total Purchased Property Services

\$53,994.50

Total 4600 Existing Building Improvement Services

\$53,994.50

	<u>General Fund(10)</u>	<u>Public Purpose Trust(27)</u>	<u>Other Compt Approved (28)</u>	<u>Athletic / Activity(29)</u>	<u>Capital Reserve (690. 1850)(31)</u>
1000 Instruction					
1100 Regular Programs - Elementary / Secondary	41,164,412.74				
1200 Special Programs - Elementary / Secondary	13,843,202.35				
1300 Vocational Education	3,431,313.00				
1400 Other Instructional Programs - Elementary / Secondary	68,258.89				
Total Instruction	\$58,507,186.98				
2000 Support Services					
2100 Support Services - Students	3,989,040.53				
2200 Support Services - Instructional Staff	2,498,112.71				
2300 Support Services - Administration	4,149,937.27				
2400 Support Services - Pupil Health	892,131.84				
2500 Support Services - Business	899,310.16				
2600 Operation and Maintenance of Plant Services	3,800,653.87				
2700 Student Transportation Services	6,092,607.58				
2800 Support Services - Central	3,093,864.51				
2900 Other Support Services	628,998.20				
Total Support Services	\$26,044,656.67				
3000 Operation of Non-Instructional Services					
3200 Student Activities	1,169,998.45				
3300 Community Services	1,541.26				
3400 Scholarships and Awards	16,186.88				
Total Operation of Non-Instructional Services	\$1,187,726.59				
4000 Facilities Acquisition, Construction and Improvement Services					
4200 Existing Site Improvement Services					
4400 Architecture and Engineering Services / Educational Specifications - Improvements	22,382.41				
4500 Building Acquisition and Construction Services - Original and Additional					
4600 Existing Building Improvement Services					
Total Facilities Acquisition, Construction and Improvement	\$22,382.41				
5000 Other Expenditures and Financing Uses					
5100 Debt Service / Other Expenditures and Financing Uses	3,270,365.00				
5200 Interfund Transfers - Out	1,850,000.00				
Total Other Expenditures and Financing Uses	\$5,120,365.00				
TOTAL ACTUAL EXPENDITURES & OTHER FINANCING USES	\$90,882,317.65				

LEA : 124150503 Avon Grove SD

Printed 11/2/2018 8:02:46 AM

	<u>Capital Reserve (1431)(32)</u>	<u>Other Capital Projects Fund(39)</u>	<u>Debt Service(40)</u>	<u>Permanent(90)</u>	<u>Total</u>
1000 Instruction					
1100 Regular Programs - Elementary / Secondary					41,164,412.74
1200 Special Programs - Elementary / Secondary					13,843,202.35
1300 Vocational Education					3,431,313.00
1400 Other Instructional Programs - Elementary / Secondary					68,258.89
Total Instruction					\$58,507,186.98
2000 Support Services					
2100 Support Services - Students					3,989,040.53
2200 Support Services - Instructional Staff					2,498,112.71
2300 Support Services - Administration					4,149,937.27
2400 Support Services - Pupil Health					892,131.84
2500 Support Services - Business					899,310.16
2600 Operation and Maintenance of Plant Services		13,859.12			3,814,512.99
2700 Student Transportation Services					6,092,607.58
2800 Support Services - Central		256,835.45			3,350,699.96
2900 Other Support Services					628,998.20
Total Support Services		\$270,694.57			\$26,315,351.24
3000 Operation of Non-Instructional Services					
3200 Student Activities					1,169,998.45
3300 Community Services					1,541.26
3400 Scholarships and Awards					16,186.88
Total Operation of Non-Instructional Services					\$1,187,726.59
4000 Facilities Acquisition, Construction and Improvement Services					
4200 Existing Site Improvement Services		392,311.50			392,311.50
4400 Architecture and Engineering Services / Educational Specifications - Improvements					22,382.41
4500 Building Acquisition and Construction Services - Original and Additional		336,017.70			336,017.70
4600 Existing Building Improvement Services		53,994.50			53,994.50
Total Facilities Acquisition, Construction and Improvement		\$782,323.70			\$804,706.11
5000 Other Expenditures and Financing Uses					
5100 Debt Service / Other Expenditures and Financing Uses					3,270,365.00
5200 Interfund Transfers - Out					1,850,000.00
Total Other Expenditures and Financing Uses					\$5,120,365.00
TOTAL ACTUAL EXPENDITURES & OTHER FINANCING USES		\$1,053,018.27			\$91,935,335.92

LEA : 124150503 Avon Grove SD

Printed 11/2/2018 8:02:50 AM

PSERS Salary Data (Salary Data should relate to the General Fund only)

Amount Description	Amount
Total Salary Base for salaries subject to PSERS withholding	31,668,112.00
Total Federally Funded salaries subject to PSERS withholding	289,018.00
	<hr/>

Title I Expenditure Data

Amount Description	Amount
Expenditures Funded with Current Title I Funds	2,540.00
Expenditures Funded with Carry over Title I Funds	291,797.00
	<hr/>
Total Title I Expenditure Data	\$294,337.00
	<hr/>

Benefits for Staff Relative to Collective Bargaining Agreements

	OBJECT	COVERED	NOT COVERED	TOTAL
10 General Fund				
	211 Medical Insurance			
	212 Dental Insurance			
	215 Eye Care Insurance			
	216 Prescription Insurance			
	271 Self-Insurance Medical Benefits	4,206,934.40	464,412.90	4,671,347.30
	272 Self-Insurance Dental Benefits	269,350.19	27,879.92	297,230.11
	275 Self-Insurance Eye Care Benefits	69,028.62	7,096.84	76,125.46
	276 Self-Insurance Prescription Benefits	90,362.41	4,377.84	94,740.25
	FUND TOTAL	\$4,635,675.62	\$503,767.50	\$5,139,443.12
50 Enterprise Fund				
	211 Medical Insurance			
	212 Dental Insurance			
	215 Eye Care Insurance			
	216 Prescription Insurance			
	271 Self-Insurance Medical Benefits	121,250.87	18,220.92	139,471.79
	272 Self-Insurance Dental Benefits	8,386.56	1,044.24	9,430.80
	275 Self-Insurance Eye Care Benefits	2,182.68	266.52	2,449.20
	276 Self-Insurance Prescription Benefits	34,397.76		34,397.76
	FUND TOTAL	\$166,217.87	\$19,531.68	\$185,749.55
60 Internal Service Fund				
	211 Medical Insurance			
	212 Dental Insurance			
	215 Eye Care Insurance			
	216 Prescription Insurance			
	271 Self-Insurance Medical Benefits	3,676,679.22	400,675.70	4,077,354.92
	272 Self-Insurance Dental Benefits	303,012.60	33,021.59	336,034.19
	275 Self-Insurance Eye Care Benefits	65,536.35	7,141.99	72,678.34
	276 Self-Insurance Prescription Benefits	1,345,954.92	146,678.94	1,492,633.86
	FUND TOTAL	\$5,391,183.09	\$587,518.22	\$5,978,701.31
Total of All Funds		\$10,193,076.58	\$1,110,817.40	\$11,303,893.98

LEA : 124150503 Avon Grove SD

Printed 11/2/2018 8:02:53 AM

Function	Special Education (Prior Year)	Nonspecial Education (Prior Year)	Total (Prior Year)	Special Education (Current Year)	Nonspecial Education (Current Year)	Total (Current Year)
2120 Guidance Services	503,561.78	1,294,873.14	1,798,434.92	260,719.91	1,727,269.41	1,987,989.32
2140 Psychological Services	178,965.53	460,197.07	639,162.60	655,060.92	34,476.89	689,537.81
2150 Speech Pathology and Audiology Services	132,508.90	340,737.17	473,246.07	464,946.37	24,470.86	489,417.23
2160 Social Work Services						
2260 Instruction and Curriculum Development Services						
2350 Legal and Accounting Services				121,280.97	205,274.86	326,555.83
2420 Medical Services						
2440 Nursing Services				116,773.13	773,622.02	890,395.15
2700 Student Transportation Services	1,684,672.03	4,269,287.33	5,953,959.36	1,688,887.86	4,403,719.72	6,092,607.58
Total	\$2,499,708.24	\$6,365,094.71	\$8,864,802.95	\$3,307,669.16	\$7,168,833.76	\$10,476,502.92

(PRINCIPAL AMOUNTS ONLY)

GOVERNMENTAL FUNDS/ ACTIVITIES

	Short-Term Borrowing	General Obligation Bonds/Notes	Authority Building Obligations	Other Long-Term Debt	Other Post-Employment Benefits (OPEB)	Compensated Absences	Net Pension Liability	Total
1. Debt at Beginning of Fiscal Year		18,445,000.00		30,923.00	26,303,657.00	1,438,882.00	116,830,255.00	163,048,717.00
2. Additional Debt Incurred During Year				56,835.00		127,413.00		184,248.00
3. Retirements and Repayments		2,840,000.00		35,199.00	4,583,776.00		3,746,053.00	11,205,028.00
4. Debt at End of Fiscal Year		15,605,000.00		52,559.00	21,719,881.00	1,566,295.00	113,084,202.00	152,027,937.00
5. Accreted Interest at End Of Fiscal Year								
6. Total Debt and Accreted Interest		15,605,000.00		52,559.00	21,719,881.00	1,566,295.00	113,084,202.00	152,027,937.00
7. Current Portion P&I - Due within 1 year		3,269,990.00		12,678.00		87,128.00		3,369,796.00
8. Interest Paid during current fiscal year		430,365.00						430,365.00

(PRINCIPAL AMOUNTS ONLY)

PROPRIETARY FUNDS

	Short-Term Borrowing	General Obligation Bonds/Notes	Authority Building Obligations	Other Long-Term Debt	Other Post-Employment Benefits (OPEB)	Compensated Absences	Net Pension Liability	Total
1. Debt at Beginning of Fiscal Year					89,389.00		2,056,745.00	2,146,134.00
2. Additional Debt Incurred During Year								
3. Retirements and Repayments					7,266.00		65,947.00	73,213.00
4. Debt at End of Fiscal Year					82,123.00		1,990,798.00	2,072,921.00
5. Accreted Interest at End Of Fiscal Year								
6. Total Debt and Accreted Interest					82,123.00		1,990,798.00	2,072,921.00
7. Current Portion P&I - Due within 1 year								
8. Interest Paid during current fiscal year								

Total Principal and Interest Payments Made by Your School - All Funds

Function	Fund		Principal (910)	Principal (920)	Interest (830)	Total (Principal +Interest)	Misc Other Uses (990)
5110	10	General Fund	2,840,000.00		430,365.00	3,270,365.00	
5110	20	Special Revenue Funds					
5110	30	Capital Projects Funds					
5110	40	Debt Service Fund					
5110	90	Permanent Fund					
5120	10	General Fund					
5120	20	Special Revenue Funds					
5120	30	Capital Projects Funds					
5120	40	Debt Service Fund					

Total Debt Payments - Governmental Funds			\$2,840,000.00		\$430,365.00	\$3,270,365.00	
---	--	--	-----------------------	--	---------------------	-----------------------	--

Function	Fund		Principal (910)	Principal (920)	Interest (830)	Total (Principal +Interest)
5110	50	Enterprise Fund				
5110	60	Internal Service Fund				
5120	50	Enterprise Fund				
5120	60	Internal Service Fund				

Total Debt Payments - Proprietary Funds						
--	--	--	--	--	--	--

Debt Details
Governmental Funds/ Activities

Debt Category	Debt Issue Date (MM/YYYY)	Principal Amounts Only			Debt at End of Fiscal Year	Current Portion Due Within One Year (Principal and Interest)	Interest Paid During Fiscal Year
		Debt at Beginning of Fiscal Year	Additions	Reductions / Repayments			
General Obligation Bonds/Notes – CIB	10/2012	18,445,000.00		2,840,000.00	15,605,000.00	3,269,990.00	430,365.00
Other Long Term Debt/Liabilities		30,923.00	56,835.00	35,199.00	52,559.00	12,678.00	
Compensated Absences		1,438,882.00	127,413.00		1,566,295.00	87,128.00	
Other Post-Employment Benefits (OPEB)		26,303,657.00		4,583,776.00	21,719,881.00		
Net Pension Liability		116,830,255.00		3,746,053.00	113,084,202.00		
Totals for Debt Entered:		\$163,048,717.00	\$184,248.00	\$11,205,028.00	\$152,027,937.00	\$3,369,796.00	\$430,365.00

Bond Details
Proprietary Funds

Debt Category	Debt Issue Date (MM/YYYY)	Principal Amounts Only			Debt at End of Fiscal Year	Current Portion Due Within One Year (Principal and Interest)	Interest Paid During Fiscal Year
		Debt at Beginning of Fiscal Year	Additions	Reductions / Repayments			
Other Post-Employment Benefits (OPEB)		89,389.00		7,266.00	82,123.00		
Net Pension Liability		2,056,745.00		65,947.00	1,990,798.00		
Totals for Debt Entered:		\$2,146,134.00		\$73,213.00	\$2,072,921.00		

General Fund (10)

Section 1: Tuition/Purchased Services as Reported within Expenditure Detail	Amount
Tuition Reported in General Fund Expenditures 1000-560	10,770,193.25
Purchased Services in General Fund Expenditures 1000-594 and 1000-597	
Section 1 Total	\$10,770,193.25

Section 2: Tuition Paid to Institution Types During Fiscal Year	Tuition Paid For Nonspecial Education	Tuition Paid For Special Education	Total
1 1306 Institutions			
2 Institutionalized Children's Programs			
3 Juveniles Incarcerated in Adult Facilities			
4 Residential Treatment Facilities		85,356.05	85,356.05
5 Other Local Education Agencies		31,831.83	31,831.83
6 Brick and Mortar Charter Schools	6,862,594.50	2,561,273.31	9,423,867.81
7 Cyber Charter Schools	481,866.41	322,382.49	804,248.90
8 Career and Technology Centers			
9 Approved Private Schools		277,579.36	277,579.36
10 PA Chartered Schools for the Deaf and Blind			
11 Private Residential Rehabilitative Institutions		31,032.04	31,032.04
12 Juvenile Detention Centers		10,803.02	10,803.02
13 Special Program Jointures			
14 Other Tuition Not Included Elsewhere In This Section		105,474.24	105,474.24
Section 2 Total	\$7,344,460.91	\$3,425,732.34	\$10,770,193.25

Food Service / Cafeteria Operations Fund (51)

3000 Operation of Non-Instructional Services

Total

100 Personnel Services – Salaries

100 Personnel Services – Salaries 578,834.00

Total Personnel Services – Salaries \$578,834.00

200 Personnel Services – Employee Benefits

210 Group Insurance – Contracted Provider 1,551.76

220 Social Security Contributions 42,727.73

230 PSERS Retirement Contributions 217,481.27

250 Unemployment Compensation 178.27

260 Workers' Compensation 4,430.42

270 Group Insurance – Self-Insurance 185,749.55

292 Health Savings Accounts 3,000.00

Total Personnel Services – Employee Benefits \$455,119.00

300 Purchased Professional and Technical Services

330 Other Professional Services 1,700.00

Total Purchased Professional and Technical Services \$1,700.00

400 Purchased Property Services

410 Cleaning Services 3,045.00

430 Repairs and Maintenance Services 29,405.00

440 Rentals 555.00

Total Purchased Property Services \$33,005.00

500 Other Purchased Services

530 Communications 797.00

540 Advertising (262.00)

580 Travel 3,334.00

Total Other Purchased Services \$3,869.00

600 Supplies

610 General Supplies 63,736.00

630 Food 909,043.00

650 Supplies & Fees – Technology Related 6,227.00

Total Supplies \$979,006.00

700 Property

740 Depreciation 10,808.00

Total Property \$10,808.00

800 Other Objects

810 Dues and Fees 951.00

Total Other Objects \$951.00

Total 3000 Operation of Non-Instructional Services \$2,063,292.00

Food Service / Cafeteria Operations Fund (51)

3100 Food Services

Elementary Secondary Federal Total

100 Personnel Services – Salaries				
100 Personnel Services – Salaries				578,834.00
Total Personnel Services – Salaries				\$578,834.00
200 Personnel Services – Employee Benefits				
210 Group Insurance – Contracted Provider				1,551.76
220 Social Security Contributions				42,727.73
230 PSERS Retirement Contributions				217,481.27
250 Unemployment Compensation				178.27
260 Workers' Compensation				4,430.42
270 Group Insurance – Self-Insurance				185,749.55
292 Health Savings Accounts				3,000.00
Total Personnel Services – Employee Benefits				\$455,119.00
300 Purchased Professional and Technical Services				
330 Other Professional Services				1,700.00
Total Purchased Professional and Technical Services				\$1,700.00
400 Purchased Property Services				
410 Cleaning Services				3,045.00
430 Repairs and Maintenance Services				29,405.00
440 Rentals				555.00
Total Purchased Property Services				\$33,005.00
500 Other Purchased Services				
530 Communications				797.00
540 Advertising				(262.00)
580 Travel				3,334.00
Total Other Purchased Services				\$3,869.00
600 Supplies				
610 General Supplies				63,736.00
630 Food				909,043.00
650 Supplies & Fees – Technology Related				6,227.00
Total Supplies				\$979,006.00
700 Property				
740 Depreciation				10,808.00
Total Property				\$10,808.00
800 Other Objects				
810 Dues and Fees				951.00
Total Other Objects				\$951.00
Total 3100 Food Services				\$2,063,292.00

Internal Service Fund (60)

2000 Support Services

Total

200 Personnel Services – Employee Benefits

270 Group Insurance – Self-Insurance

5,978,702.00

Total Personnel Services – Employee Benefits

\$5,978,702.00

Total 2000 Support Services

\$5,978,702.00

Internal Service Fund (60)

2800 Support Services – Central

Elementary

Secondary

Federal

Total

200 Personnel Services – Employee Benefits

270 Group Insurance – Self-Insurance

5,978,702.00

Total Personnel Services – Employee Benefits

\$5,978,702.00

Total 2800 Support Services – Central

\$5,978,702.00

Internal Service Fund (60)

2830 Staff Services

Elementary

Secondary

Federal

Total

200 Personnel Services – Employee Benefits

270 Group Insurance – Self-Insurance

5,978,702.00

Total Personnel Services – Employee Benefits

\$5,978,702.00

Total 2830 Staff Services

\$5,978,702.00

LEA : 124150503 Avon Grove SD

Printed 11/2/2018 8:02:56 AM

Internal Service Fund (60)

2835 Health Services

Elementary

Secondary

Federal

Total

200 Personnel Services – Employee Benefits

270 Group Insurance – Self-Insurance

5,978,702.00

Total Personnel Services – Employee Benefits

\$5,978,702.00

Total 2835 Health Services

\$5,978,702.00

	<u>Food Service(51)</u>	<u>Child Care Operations(52)</u>	<u>Other Enterprise(58)</u>	<u>Internal Service(60)</u>	<u>Total</u>
2000 <u>Support Services</u>					
2800 Support Services - Central				5,978,702.00	5,978,702.00
Total Support Services				\$5,978,702.00	\$5,978,702.00
3000 <u>Operation of Non-Instructional Services</u>					
3100 Food Services	2,063,292.00				2,063,292.00
Total Operation of Non-Instructional Services	\$2,063,292.00				\$2,063,292.00
TOTAL ACTUAL EXPENDITURES & OTHER FINANCING USES	\$2,063,292.00			\$5,978,702.00	\$8,041,994.00