

LEA Name : Avon Grove SD
Address : 375 S Jennersville Road
West Grove , PA 19390

County : Chester
AUN Number : 124150503
LEA Type : SD

**Annual Financial Report
Accuracy Certification Statement**

For Fiscal Year Ending
6/30/2019

Pennsylvania Department of Education
&
Office of Comptroller Operations

PDE-2056: Intermediate Unit
PDE-2057: School District, AVTS/CTC, Charter School,
and Special Program Jointure

CERTIFICATION: By signing this page I agree that the electronic data submitted is a complete and accurate statement of the financial operations and status of the local education agency for the fiscal year. It has been prepared in accordance with generally accepted accounting principles and established Commonwealth of PA reporting guidelines.



Chief School Administrator Signature

Wendy El Kraw

Board Secretary Signature

10/28/19

Date

10.29.2019

Date

Daniel Carsley

Contact Person

(610)869-2441 Ext :

Contact Person Telephone Number

dcarsley@avongrove.org

Contact Person E-mail Address

Contact Person Fax Number

Audit Certification
Annual Financial Report:
For Fiscal Year Ending **6/30/2019**
(Pursuant to PA School Code Section 218(b))


LEA Name : Avon Grove SD
AUN Number : 124150503
County : Chester

Audit Certification Due: 12/31/2019

This certification is applicable to the Annual Financial Report data submitted through the Consolidated Financial Reporting System on: 11/21/2019
Date

Auditing Firm: *BARBACANE THORNTON + COMPANY*
WILMINGTON, DE

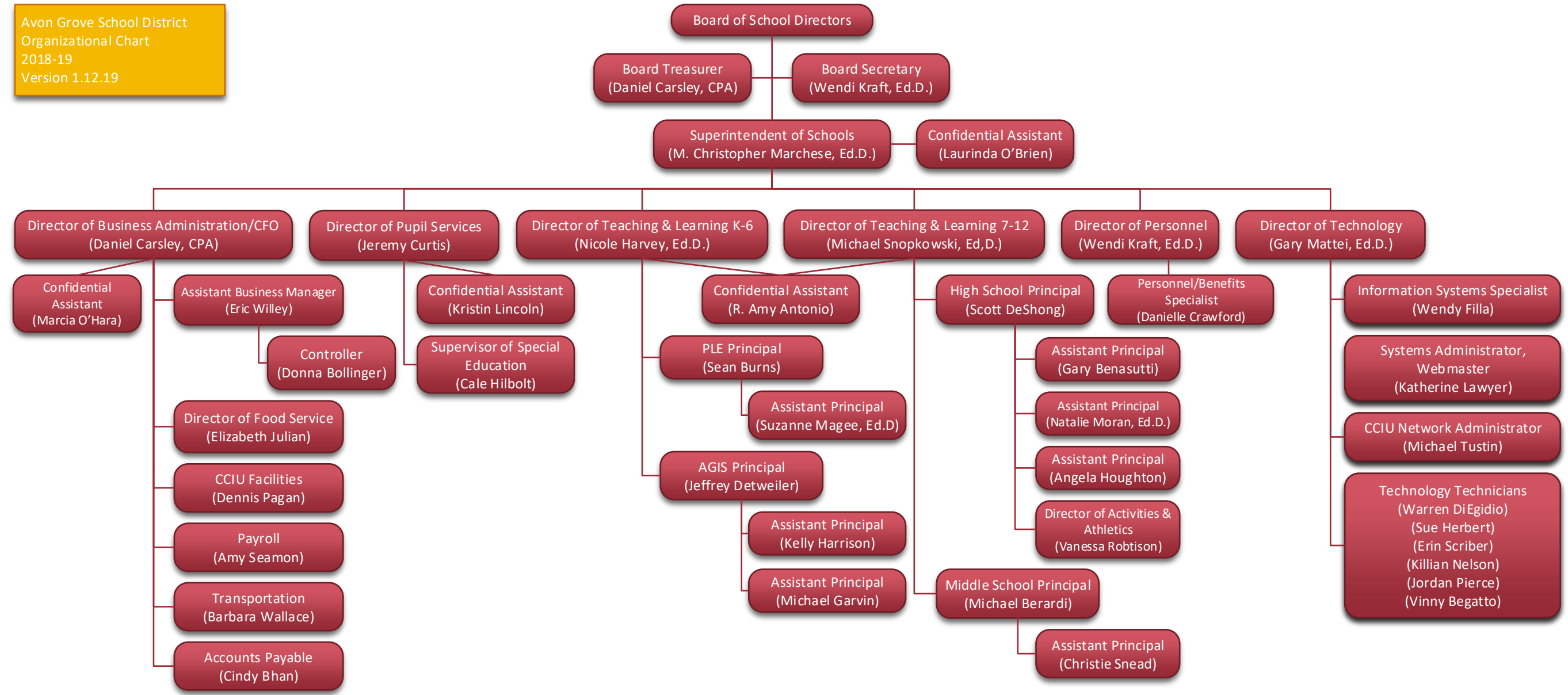
CERTIFICATION: By signing this page I agree that the financial statements of the school have been properly audited as noted above pursuant to Article XXIV; and in the auditor's professional opinion, the Annual Financial Report (PDE-2057) submitted on the date referenced is materially consistent with the audited financial statements.

Chief School Administrator

Signature _____ Date 11/21/19

Board Secretary
Wendi Lee Krar
Signature _____ Date 11.21.19

Daniel Carsley
Contact Person _____
dcarsley@avongrove.org
Contact Person E-mail Address _____

(610)869-2441 Ext : _____
Contact Person Telephone Number _____
Contact Person Fax Number _____



<u>Val Number</u>	<u>Description</u>	<u>Justification</u>
12129	REG Fund 39: Data has been entered for Revenue code 9910 - Other Financing Sources. Please provide a description of this entry. REG 9910, Fund 39: \$400,859.00	This amount is the value of proceeds received from the swap counterparty for the issuance of two interest rate hedges. The cost of the hedges were built into the fixed rate the District pays on the swap, generating proceeds on the execution of the hedges.
30720	A large variance exists between federal revenues (8000's & 6830's) and federal expenditures reported in the General Fund. NOTE: IDEA pass thru, Medical Access, and QSCB/QZAB funded expenditures should be reported as federal expenditures. Correct data or enter a justification. General Fund Federal Revenues: \$1,510,764.35 General Fund Federal Expenditures: \$1,006,490.67	This difference is the amount of SBAP/Medical ACCESS funds received for Medicaid eligible services provided to students. Per PDE Accounting Bulletin #2008-01, these funds classified as fee-for-service and are not considered federal financial assistance.
41140	Expenditure Detail - There is an entry in function 5150- 990 object "Other". Please explain what constitutes "Other". Expenditure 5150-990, Fund 39: \$317,143.75	This amount is the value of the underwriter's discount on the General Obligation Bonds, Series of 2018 issued in December of 2018.
50440	SESS - 2260 Instruction and Curriculum Development Services: SESS Schedule amounts for Special Education vary from prior year by 40% or more. Correct the data or enter a justification. SESS Schedule 2260: \$232,331.01 Prior Year SESS Schedule 2260: \$0.00	In previous years, Special Education administrative costs were included with other costs in function 2260 and could not be feasibly allocated between special and non-special education. The District began tracking these costs more accurately in 2018-19.
50450	SESS - 2350 Legal and Accounting Services: SESS Schedule amounts for Special Education vary from prior year by 40% or more. Correct the data or enter a justification. SESS Schedule 2350: \$54,414.20 Prior Year SESS Schedule 2350: \$121,280.97	Legal costs were higher in 2017-18 due to a higher number of special education cases being handled by the District's special education counsel, and included a number of larger settlement payments.

Amounts Expressed in Whole Dollars	<u>General Fund</u> <u>(10)</u>	<u>Public Purpose Trust</u> <u>(27)</u>	<u>Other Compt Approved</u> <u>(28)</u>	<u>Athletic / Activity</u> <u>(29)</u>	<u>Capital Reserve (690.</u> <u>1850)</u> <u>(31)</u>
Assets And Deferred Outflows Of Resources					
Assets					
0100 Cash and Cash Equivalents	1,571,086				
0110 Investments	24,021,209				
0120 Taxes Receivable	1,293,688				
0130 Due From Other Funds	12,637				
0141 Due From Other Governments	301,566				
0142 State Revenue Receivable	1,864,991				
0143 Federal Revenue Receivable	548,345				
0145 Other Intergovernmental Revenue Receivable					
0146 Due from Primary Government					
0147 Due from Component Unit					
0150 Other Receivables	23,810				
0170 Inventories					
0180 Prepaid Expenses (Expenditures)	925				
0190 Other Current Assets					
Total Assets	\$29,638,257				
0910 Deferred Outflows of Resources					
Total Assets And Deferred Outflows Of Resources	\$29,638,257				

Amounts Expressed in Whole Dollars

	<u>Capital Reserve (1431)</u> <u>(32)</u>	<u>Other Capital Projects</u> <u>Fund</u> <u>(39)</u>	<u>Debt Service</u> <u>(40)</u>	<u>Permanent</u> <u>(90)</u>	<u>Total Governmental</u> <u>Funds</u>
Assets And Deferred Outflows Of Resources					
Assets					
0100 Cash and Cash Equivalents					1,571,086
0110 Investments		41,837,520			65,858,729
0120 Taxes Receivable					1,293,688
0130 Due From Other Funds					12,637
0141 Due From Other Governments					301,566
0142 State Revenue Receivable					1,864,991
0143 Federal Revenue Receivable					548,345
0145 Other Intergovernmental Revenue Receivable					
0146 Due from Primary Government					
0147 Due from Component Unit					
0150 Other Receivables					23,810
0170 Inventories					
0180 Prepaid Expenses (Expenditures)		4,912			5,837
0190 Other Current Assets					
Total Assets		\$41,842,432			\$71,480,689
0910 Deferred Outflows of Resources					
Total Assets And Deferred Outflows Of Resources		\$41,842,432			\$71,480,689

Amounts Expressed in Whole Dollars

<u>General Fund</u>	<u>Public Purpose Trust</u>	<u>Other Compt Approved</u>	<u>Athletic / Activity</u>	<u>Capital Reserve (690.</u>
<u>(10)</u>	<u>(27)</u>	<u>(28)</u>	<u>(29)</u>	<u>1850)</u>
				<u>(31)</u>

Liabilities And Deferred Inflows Of Resources And Fund Balances

Liabilities

0400 Due to Other Funds	725,628
0411 Due to Other Governments	
0412 Due to Primary Government	
0413 Due to Component Unit	
0420 Accounts Payable	1,372,221
0430 Contracts Payable	
0440 Current Portion of Long-Term Debt	
0450 Short-Term Payables	
0461 Accrued Salaries and Benefits	6,868,060
0462 Payroll Deductions and Withholding	73,914
0480 Unearned Revenues	856,434
0490 Other Current Liabilities	81,564

Total Liabilities **\$9,977,821**

0950 Deferred Inflows of Resources	1,079,962
------------------------------------	-----------

Fund Balances

0810 Nonspendable Fund Balance	925
0820 Restricted Fund Balance	
0830 Committed Fund Balance	5,998,719
0840 Assigned Fund Balance	6,741,204
0850 Unassigned Fund Balance	5,839,626

Total Fund Balances **\$18,580,474**

Total Liabilities, Deferred Inflows Of Resources And Fund Balances **\$29,638,257**

Amounts Expressed in Whole Dollars

	<u>Capital Reserve (1431)</u> <u>(32)</u>	<u>Other Capital Projects</u> <u>Fund</u> <u>(39)</u>	<u>Debt Service</u> <u>(40)</u>	<u>Permanent</u> <u>(90)</u>	<u>Total Governmental</u> <u>Funds</u>
Liabilities And Deferred Inflows Of Resources And Fund Balances					
Liabilities					
0400 Due to Other Funds		12,637			738,265
0411 Due to Other Governments					
0412 Due to Primary Government					
0413 Due to Component Unit					
0420 Accounts Payable		601,272			1,973,493
0430 Contracts Payable					
0440 Current Portion of Long-Term Debt					
0450 Short-Term Payables					
0461 Accrued Salaries and Benefits					6,868,060
0462 Payroll Deductions and Withholding					73,914
0480 Unearned Revenues					856,434
0490 Other Current Liabilities					81,564
Total Liabilities		\$613,909			\$10,591,730
0950 Deferred Inflows of Resources					1,079,962
Fund Balances					
0810 Nonspendable Fund Balance					925
0820 Restricted Fund Balance		41,228,523			41,228,523
0830 Committed Fund Balance					5,998,719
0840 Assigned Fund Balance					6,741,204
0850 Unassigned Fund Balance					5,839,626
Total Fund Balances		\$41,228,523			\$59,808,997
Total Liabilities, Deferred Inflows Of Resources And Fund Balances		\$41,842,432			\$71,480,689

Amounts Expressed in Whole Dollars	<u>General Fund</u> <u>(10)</u>	<u>Public Purpose Trust</u> <u>(27)</u>	<u>Other Compt Approved</u> <u>(28)</u>	<u>Athletic / Activity</u> <u>(29)</u>	<u>Capital Reserve (690.</u> <u>1850)</u> <u>(31)</u>
Revenues					
6000 Revenue from Local Sources	58,463,976				
7000 Revenue from State Sources	31,041,573				
8000 Revenue from Federal Sources	993,809				
Total Revenues	\$90,499,358				
Expenditures					
1000 Instruction	60,861,320				
2000 Support Services	25,704,666				
3000 Operation of Non-Instructional Services	1,305,279				
4000 Facilities Acquisition, Construction and Improvement Services					
5110 Debt Service	3,930,309				
5130 Refund of Prior Year Revenues / Receipts	381				
Total Expenditures	\$91,801,955				
Excess (Deficiency) Of Revenues Over Expenditures	(\$1,302,597)				
Other Financing Sources (Uses)					
9110 Face Value of Bonds Issued					
9120 Proceeds from Refunding of Bonds					
9130 Bond Premiums					
9200 Proceeds from Extended-Term Financing					
9300 Interfund Transfers - IN					
9400 Sale of or Compensation for Loss of Fixed Assets	16,735				
9710 Transfers from Component Units					
9720 Transfers from Primary Governments					
9910 Other Financing Sources Not Listed in the 9000 Series					
9990 Insurance Recoveries					
5120 Debt Service – Refunded Bonds					
5150 Bond Discounts					
5200 Interfund Transfers – Out	1,851,175				
5300 Transfers Out to Component Units/Primary Governments					
Total Other Financing Sources (Uses)	(\$1,834,440)				

Amounts Expressed in Whole Dollars	<u>Capital Reserve (1431)</u> <u>(32)</u>	<u>Other Capital Projects</u> <u>Fund</u> <u>(39)</u>	<u>Debt Service</u> <u>(40)</u>	<u>Permanent</u> <u>(90)</u>	<u>Total Governmental</u> <u>Funds</u>
Revenues					
6000 Revenue from Local Sources		477,450			58,941,426
7000 Revenue from State Sources					31,041,573
8000 Revenue from Federal Sources					993,809
Total Revenues		\$477,450			\$90,976,808
Expenditures					
1000 Instruction					60,861,320
2000 Support Services		788,269			26,492,935
3000 Operation of Non-Instructional Services					1,305,279
4000 Facilities Acquisition, Construction and Improvement Services		4,012,032			4,012,032
5110 Debt Service					3,930,309
5130 Refund of Prior Year Revenues / Receipts					381
Total Expenditures		\$4,800,301			\$96,602,256
Excess (Deficiency) Of Revenues Over Expenditures		(\$4,322,851)			(\$5,625,448)
Other Financing Sources (Uses)					
9110 Face Value of Bonds Issued		36,245,000			36,245,000
9120 Proceeds from Refunding of Bonds					
9130 Bond Premiums		4,216,110			4,216,110
9200 Proceeds from Extended-Term Financing					
9300 Interfund Transfers - IN		1,850,000			1,850,000
9400 Sale of or Compensation for Loss of Fixed Assets					16,735
9710 Transfers from Component Units					
9720 Transfers from Primary Governments					
9910 Other Financing Sources Not Listed in the 9000 Series		400,859			400,859
9990 Insurance Recoveries					
5120 Debt Service – Refunded Bonds					
5150 Bond Discounts		317,144			317,144
5200 Interfund Transfers – Out					1,851,175
5300 Transfers Out to Component Units/Primary Governments					
Total Other Financing Sources (Uses)		\$42,394,825			\$40,560,385

Amounts Expressed in Whole Dollars	<u>General Fund</u> <u>(10)</u>	<u>Public Purpose Trust</u> <u>(27)</u>	<u>Other Compt Approved</u> <u>(28)</u>	<u>Athletic / Activity</u> <u>(29)</u>	<u>Capital Reserve</u> <u>(690.</u> <u>1850)</u> <u>(31)</u>
Special And Extraordinary Items					
9920 Special Items – Gains					
9930 Extraordinary Items – Gains					
5520 Special Items – Losses					
5530 Extraordinary Items – Losses					
Net Change In Fund Balances	(\$3,137,037)				
Fund Balance					
0001 Fund Balance - Beginning of Fiscal Year	21,717,513				
Fund Balance - End Of Year	\$18,580,476				

Amounts Expressed in Whole Dollars	<u>Capital Reserve (1431)</u> <u>(32)</u>	<u>Other Capital Projects</u> <u>Fund</u> <u>(39)</u>	<u>Debt Service</u> <u>(40)</u>	<u>Permanent</u> <u>(90)</u>	<u>Total Governmental</u> <u>Funds</u>
Special And Extraordinary Items					
9920 Special Items – Gains					
9930 Extraordinary Items – Gains					
5520 Special Items – Losses					
5530 Extraordinary Items – Losses					
Net Change In Fund Balances		\$38,071,974			\$34,934,937
Fund Balance					
0001 Fund Balance - Beginning of Fiscal Year		3,156,548			24,874,061
Fund Balance - End Of Year		\$41,228,522			\$59,808,998

Amounts Expressed in Whole Dollars	<u>Food Service</u> <u>(51)</u>	<u>Child Care</u> <u>Operations</u> <u>(52)</u>	<u>Other Enterprise</u> <u>(58)</u>	<u>TOTAL</u>	<u>Internal Service</u> <u>(60)</u>
Assets And Deferred Outflows Of Resources					
Current Assets					
0100 Cash and Cash Equivalents	237,156			237,156	
0110 Investments	289,457			289,457	3,249,415
0130 Due From Other Funds	33,027			33,027	692,602
0141 Due From Other Governments					
0142 State Revenue Receivable	2,666			2,666	
0143 Federal Revenue Receivable	37,731			37,731	
0146 Due from Primary Government					
0147 Due from Component Unit					
0150 Other Receivables	18,423			18,423	
0170 Inventories	58,963			58,963	
0180 Prepaid Expenses (Expenditures)					
0190 Other Current Assets					162,000
Total Current Assets	\$677,423			\$677,423	\$4,104,017
Noncurrent Assets					
0211 Land					
0212 Site Improvements (Net)					
0220 Buildings and Building Improvements (Net)					
0230 Machinery, Equipment and Furniture (Net)	37,891			37,891	
0250 Construction in Progress					
0260 Long Term Prepayments					
0290 Other Noncurrent Assets					
Total Noncurrent Assets	\$37,891			\$37,891	
0910 Deferred Outflows of Resources	297,927			297,927	
Total Assets And Deferred Outflows Of Resources	\$1,013,241			\$1,013,241	\$4,104,017

Amounts Expressed in Whole Dollars	<u>Food Service</u> (51)	<u>Child Care</u> <u>Operations</u> (52)	<u>Other Enterprise</u> (58)	<u>TOTAL</u>	<u>Internal Service</u> (60)
Liabilities And Deferred Inflows Of Resources And Net Position					
Current Liabilities					
0400 Due to Other Funds					
0411 Due to Other Governments					
0413 Due to Component Unit					
0420 Accounts Payable	2,778			2,778	604,017
0430 Contracts Payable					
0440 Current Portion of Long-Term Debt					
0450 Short-Term Payables					
0461 Accrued Salaries and Benefits	17,607			17,607	
0462 Payroll Deductions and Withholding					
0480 Unearned Revenues	49,785			49,785	
0490 Other Current Liabilities					
Total Current Liabilities	\$70,170			\$70,170	\$604,017
Noncurrent Liabilities					
0510 Bonds Payable					
0520 Extended-Term Financing Agreements Payable					
0530 Lease-Purchase Obligations					
0540 Accumulated Compensated Absences	38,862			38,862	
0550 Authority Lease Obligations					
0560 Other Post-Employment Benefits (OPEB)	85,739			85,739	
0570 Net Pension Liability	1,974,068			1,974,068	
0599 Other Noncurrent Liabilities					
Total Noncurrent Liabilities	\$2,098,669			\$2,098,669	
Total Liabilities	\$2,168,839			\$2,168,839	\$604,017
0950 Deferred Inflows of Resources	68,179			68,179	
Net Position					
0791 Net Investment in Capital Assets	37,891			37,891	
0008 Restricted Net Position (0792 – 0798)					
0799 Unrestricted Net Position	(1,261,668)			(1,261,668)	3,500,000
Total Net Position	(\$1,223,777)			(\$1,223,777)	\$3,500,000
Total Liabilities And Deferred Inflows Of Resources And Net Position	\$1,013,241			\$1,013,241	\$4,104,017

Amounts Expressed in Whole Dollars	<u>Food Service</u> <u>(51)</u>	<u>Child Care Operations</u> <u>(52)</u>	<u>Other Enterprise</u> <u>(58)</u>	<u>TOTAL</u>	<u>Internal Service</u> <u>(60)</u>
Operating Revenues					
6600 Food Service Revenue	1,065,028			1,065,028	
0071 Charges for Services					6,257,770
0072 Other Operating Revenue					
Total Operating Revenues	\$1,065,028			\$1,065,028	\$6,257,770
Operating Expenses					
100 Personnel Services – Salaries	606,010			606,010	
200 Personnel Services – Employee Benefits	435,818			435,818	6,183,299
300 Purchased Professional and Technical Services	3,123			3,123	
400 Purchased Property Services	15,687			15,687	
500 Other Purchased Services	4,306			4,306	
600 Supplies	1,018,296			1,018,296	
740 Depreciation	9,955			9,955	
810 Dues and Fees	2,628			2,628	
890 Miscellaneous Expenditures	1,175			1,175	
Total Operating Expenses	\$2,096,998			\$2,096,998	\$6,183,299
Operating Income (Loss)	(\$1,031,970)			(\$1,031,970)	\$74,471
Non Operating Revenues (Expenses)					
6500 Earnings on Investments	6,555			6,555	72,097
6920 Contributions and Donations from Private Sources	1,112			1,112	
6930 Gains or Losses on Sale of Fixed Assets					
6991 Refunds of a Prior Year Expenditure					
7000 Revenue from State Sources	173,557			173,557	
8000 Revenue from Federal Sources	925,709			925,709	
9990 Insurance Recoveries					
820 Claims and Judgments Against the LEA					
830 Interest					
TOTAL Non Operating Revenues (Expenses)	\$1,106,933			\$1,106,933	\$72,097
Income (Loss) Before Contributions And Transfers	\$74,963			\$74,963	\$146,568

Amounts Expressed in Whole Dollars	<u>Food Service</u> <u>(51)</u>	<u>Child Care Operations</u> <u>(52)</u>	<u>Other Enterprise</u> <u>(58)</u>	<u>TOTAL</u>	<u>Internal Service</u> <u>(60)</u>
Contributions, Transfers, and Special and Extraordinary Items					
5200 Interfund Transfers – Out					
5300 Transfers Out to Component Units/Primary Governments					
5520 Special Items – Losses					
5530 Extraordinary Items – Losses					
9300 Interfund Transfers - IN	1,175			1,175	
9500 Capital Contributions					
9700 Transfers IN From Component Units/Primary Governments					
9920 Special Items – Gains					
9930 Extraordinary Items – Gains					
Change In Net Position	\$76,138			\$76,138	\$146,568
0002 Net Position - Beginning of Fiscal Year	(1,299,915)			(1,299,915)	3,353,432
0003 Accounting Changes / Residual Equity Transfers					
Net Position - End Of Year	(\$1,223,777)			(\$1,223,777)	\$3,500,000

Amounts Expressed in Whole Dollars	<u>Food Service</u> <u>(51)</u>	<u>Child Care Operations</u> <u>(52)</u>	<u>Other Enterprise</u> <u>(58)</u>	<u>TOTAL</u>	<u>Internal Service(60)</u>
Cash Flows From Operating Activities					
0011 Cash Receipts From Users	1,050,701			1,050,701	5,999,999
0012 Cash Receipts From Assessments Made to Other Funds					
0013 Cash Receipts From Earnings on Investments					
0014 Cash Receipts From Other Operating Revenue					
0015 Cash Payments To Employees For Services	1,164,636			1,164,636	6,102,232
0016 Cash Payments For Insurance Claims					
0017 Cash Payments To Suppliers For Goods and Services	925,830			925,830	
0018 Cash Payments For Other Operating Expenses					
Net Cash Provided By (Used For) Operating Activities	(\$1,039,765)			(\$1,039,765)	(\$102,233)
Cash Flows From Non-Capital Financing Activities					
0021 Receipts From Local Sources - 6000	1,112			1,112	
0022 Receipts From State Sources - 7000	180,494			180,494	
0023 Receipts From Federal Sources -8000	905,806			905,806	
0024 Notes and Loans Received (Repaid)					
0025 Interest Paid on Notes/Loans - 5100-830					
0026 Operating Transfers In (Out)/Residual Equity Trans	1,175			1,175	
0027 Operating Transfers In (Out) Primary Government / Comp Unit					
0028 Receipts From Refund of Prior Year Expenditures - 6991					
0029 Special and Extraordinary Gains (losses)					
0030 Receipts from Insurance Recoveries -9990					
Net Cash Prov By (Used for) Non-Capital Financing Activities	\$1,088,587			\$1,088,587	
Cash Flows From Capital and Related Financing Activities					
0031 Payments For Fac Acq, Const, and Imp - 4000					
0032 Gain / (Loss) on Sale of Fixed Assets - 6930					
0033 Proceeds From Extended Term Financing - 9200					
0034 Principal Paid on Financing Agreements					
0035 Interest Paid on Financing Agreements - 5100-830					
0036 (Inc) Dec in Contributed Capital					
Net Cash Prov By (Used for) Capital and Related Financing Activities					
Cash Flows From Investing Activities					
0041 Earnings on Investments - 6500	6,555			6,555	72,097
0042 Purchase of Inv Securities / Deposits to Inv Pools	(6,452)			(6,452)	
0043 Receipts From Investment Pool Withdrawals					
0044 Proceeds from Sale and Maturity of Inv Securities					30,136

LEA : 124150503 Avon Grove SD

Printed 11/21/2019 1:40:54 PM

0045 Loans Received (Paid)

Net Cash Prov By (Used for) Investing Activities	\$103	\$103	\$102,233
---	--------------	--------------	------------------

	<u>Food Service</u> <u>(51)</u>	<u>Child Care Operations</u> <u>(52)</u>	<u>Other Enterprise</u> <u>(58)</u>	<u>TOTAL</u>	<u>Internal Service</u> <u>(60)</u>
Net Increase (Decrease) in Cash Flows	48,925			48,925	
0004 Cash and Cash Equivalents Beginning of Year	188,231			188,231	
Cash and Cash Equivalents at Year End	\$237,156			\$237,156	
<hr/>					
Reconciliation of Operating Income (Loss) To Net Cash Provided by (Used For) Operating Activities					
0005 Operating Income (Loss) per REP	(1,031,970)			(1,031,970)	74,471
Adjustments					
0051 Depreciation and Net Amortization	9,955			9,955	
0052 Provision for Uncollectible Accounts					
0053 Other Adjustments	120,024			120,024	
Effect of Changes in Assets, Liabilities, Deferred Outflows and Deferred Inflows					
0054 (Inc) Dec In Accounts Receivable (0120-0150)	(15,167)			(15,167)	
0055 Advances to Other Funds (0160)	(182,577)			(182,577)	(257,771)
0056 (Inc) Dec in Inventories (0170)	(3,417)			(3,417)	
0057 (Inc) Dec in Prepaid Expenses (0180)					
0058 (Inc) Dec in Other Current or Noncurrent Assets					(20,000)
0064 Deferred Outflows (0910)	30,790			30,790	
0059 Inc (Dec) in Accounts Payable (0400-0450)	2,778			2,778	101,067
0060 Inc (Dec) in Accrued Salaries/Benefits (0461)	(3,533)			(3,533)	
0065 Inc (Dec) in Net Pension Liabilities (0570)	(16,730)			(16,730)	
0066 Inc (Dec) in Other Postemp Benefit Oblig (0560)	3,616			3,616	
0061 Inc (Dec) in Payroll Deductions/Withholding (0462)					
0062 Inc (Dec) in Unearned Revenue (0480)	840			840	
0063 Inc (Dec) in Other Current or Noncurrent Liabilities	38,862			38,862	
0067 Deferred Inflows (0950)	6,764			6,764	
Total Adjustments	(\$7,795)			(\$7,795)	(\$176,704)
Cash Provided By (Used for) Total	(\$1,039,765)			(\$1,039,765)	(\$102,233)

COMBINED STATEMENT OF CASH FLOWS
SCHEDULE OF NONCASH INVESTING, CAPITAL, AND FINANCING ACTIVITIES

Explanation of Transaction and Balance Sheet Effect	Amount
Total	

LEA : 124150503 Avon Grove SD

Printed 11/21/2019 1:41:01 PM

Amounts Expressed in Whole Dollars	<u>Private Purpose Trust</u> (71)	<u>Investment Trust</u> (72)	<u>Pension Trust</u> (73)	<u>Activity</u> (81)
Assets And Deferred Outflows Of Resources				
Assets				
0100 Cash and Cash Equivalents				170,712
0110 Investments				
0130 Due From Other Funds				
0147 Due from Component Unit				
0150 Other Receivables				
0170 Inventories				
0180 Prepaid Expenses (Expenditures)				
0190 Other Current Assets				
0220 Buildings and Building Improvements (Net)				
0230 Machinery, Equipment and Furniture (Net)				
Total Assets				\$170,712
0910 Deferred Outflows of Resources				
Total Assets And Deferred Outflows Of Resources				\$170,712

LEA : 124150503 Avon Grove SD

Printed 11/21/2019 1:41:01 PM

Amounts Expressed in Whole Dollars	<u>Other Agency</u> <u>(89)</u>	<u>Discrete Component Units</u> <u>(98)</u>	<u>Discrete Component Units</u> <u>(99)</u>	<u>Total Fiduciary Funds</u>
Assets And Deferred Outflows Of Resources				
Assets				
0100 Cash and Cash Equivalents				170,712
0110 Investments				
0130 Due From Other Funds				
0147 Due from Component Unit				
0150 Other Receivables				
0170 Inventories				
0180 Prepaid Expenses (Expenditures)				
0190 Other Current Assets				
0220 Buildings and Building Improvements (Net)				
0230 Machinery, Equipment and Furniture (Net)				
Total Assets				\$170,712
0910 Deferred Outflows of Resources				
Total Assets And Deferred Outflows Of Resources				\$170,712

LEA : 124150503 Avon Grove SD

Printed 11/21/2019 1:41:01 PM

Amounts Expressed in Whole Dollars	<u>Private Purpose Trust</u> (71)	<u>Investment Trust</u> (72)	<u>Pension Trust</u> (73)	<u>Activity</u> (81)
Liabilities, Deferred Inflows Of Resources And Net Position				
Liabilities				
0400 Due to Other Funds				
0411 Due to Other Governments				
0412 Due to Primary Government				
0413 Due to Component Unit				
0420 Accounts Payable				4,611
0430 Contracts Payable				
0450 Short-Term Payables				
0461 Accrued Salaries and Benefits				
0462 Payroll Deductions and Withholding				
0480 Unearned Revenues				
0490 Other Current Liabilities				166,101
Total Liabilities				\$170,712
0950 Deferred Inflows of Resources				
Net Position				
0791 Net Investment in Capital Assets				
0009 Restricted Net Position (0792 – 0798)				
0799 Unrestricted Net Position				
Total Net Position				
Total Liabilities, Deferred Inflows Of Resources And Net Position				\$170,712

LEA : 124150503 Avon Grove SD

Printed 11/21/2019 1:41:01 PM

Amounts Expressed in Whole Dollars	<u>Other Agency</u> (89)	<u>Discrete Component Units</u> (98)	<u>Discrete Component Units</u> (99)	<u>Total Fiduciary Funds</u>
Liabilities, Deferred Inflows Of Resources And Net Position				
Liabilities				
0400 Due to Other Funds				
0411 Due to Other Governments				
0412 Due to Primary Government				
0413 Due to Component Unit				
0420 Accounts Payable				4,611
0430 Contracts Payable				
0450 Short-Term Payables				
0461 Accrued Salaries and Benefits				
0462 Payroll Deductions and Withholding				
0480 Unearned Revenues				
0490 Other Current Liabilities				166,101
Total Liabilities				\$170,712
0950 Deferred Inflows of Resources				
Net Position				
0791 Net Investment in Capital Assets				
0009 Restricted Net Position (0792 – 0798)				
0799 Unrestricted Net Position				
Total Net Position				\$170,712
Total Liabilities, Deferred Inflows Of Resources And Net Position				\$170,712

	<u>Revenue Reported In Current Year</u>	<u>Current Year Tax Accrual</u>	<u>Prior Year Tax Accrual</u>	<u>Taxes Collected In Current Year</u>
<u>Revenue from Local Sources</u>				
6111 Current Real Estate Taxes	53,522,076.17			53,522,076.17
6112 Interim Real Estate Taxes	291,137.32			291,137.32
6113 Public Utility Realty Taxes	54,238.49			54,238.49
6153 Current Act 511 Real Estate Transfer Taxes	867,284.64			867,284.64
6411 Delinquent Real Estate Taxes	1,517,317.48	1,033,335.95	1,047,767.49	1,531,749.02
6412 Delinquent Interim Real Estate Taxes	69,005.42			69,005.42
6500 Earnings on Investments	863,749.21			
6700 Revenues from LEA Activities	551,823.08			
6832 Federal IDEA Revenue Received as Pass Through	516,955.00			
6910 Rentals	68,765.56			
6920 Contributions and Donations from Private Sources	55,775.46			
6941 Regular Day School Tuition	14,111.69			
6942 Summer School Tuition	2,400.00			
6991 Refunds of a Prior Year Expenditure	5,900.00			
6992 Energy Efficiency Revenues and Incentives	48,161.69			
6999 Other Revenues Not Specified Above	15,274.37			
TOTAL Revenue from Local Sources	\$58,463,975.58	\$1,033,335.95	\$1,047,767.49	\$56,335,491.06

**Revenue Reported
In Current Year**

Revenue from State Sources

7110 Basic Education Funding	15,240,088.84		
7160 Tuition for Orphans Subsidy	11,668.59		
7250 Migratory Children	596.00		
7271 Special Education funds for School-Aged Pupils	2,586,069.51		
7299 Program Revenues Not Listed Previously in the 7200 Series	2,838.43		
7311 Pupil Transportation Subsidy	1,469,142.49		
7312 Nonpublic and Charter School Pupil Transportation Subsidy	343,420.00		
7320 Rental and Sinking Fund Payments / Building Reimbursement Subsidy	528,512.76		
7330 Health Services (Medical, Dental, Nurse, Act 25)	103,455.29		
7340 State Property Tax Reduction Allocation	2,673,653.21		
7361 School Safety and Security Grants	9,926.05		
7505 Ready to Learn Block Grant	754,726.00		
7810 State Share of Social Security and Medicare Taxes	1,327,298.74		
7820 State Share of Retirement Contributions	5,990,177.39		
TOTAL Revenue from State Sources	\$31,041,573.30		

**Revenue Reported
In Current Year**

Revenue from Federal Sources

8514 NCLB, Title I - Improving the Academic Achievement of the Disadvantaged	276,178.50		
8515 NCLB, Title II - Preparing, Training and Recruiting High Quality Teachers and Principals	96,400.20		
8516 NCLB, Title III - Language Instruction for Limited English Proficient and Immigrant Students	83,503.12		
8517 NCLB, Title IV - 21st Century Schools	22,144.81		
8810 School-Based Access Medicaid Reimbursement Program (SBAP) Reimbursements (Access)	506,853.58		
8820 Medical Assistance Reimbursement for Administrative Claiming (Quarterly) Program	8,729.14		
TOTAL Revenue from Federal Sources	\$993,809.35		

Revenue Reported
In Current Year

Other Financing Sources

9400 Sale of or Compensation for Loss of Fixed Assets	16,735.00			
TOTAL Other Financing Sources	\$16,735.00			
TOTAL FROM ALL SOURCES	\$90,516,093.23	\$1,033,335.95	\$1,047,767.49	\$56,335,491.06

Revenue from Local Sources	58,463,975.58
Revenue from State Sources	31,041,573.30
Revenue from Federal Sources	993,809.35
Other Financing Sources	16,735.00
TOTAL FROM ALL SOURCES	\$90,516,093.23

General Fund (10)

	<u>Total</u>
1000 Instruction	
100 Personnel Services – Salaries	
100 Personnel Services – Salaries	23,980,460.81
Total Personnel Services – Salaries	\$23,980,460.81
200 Personnel Services – Employee Benefits	
210 Group Insurance – Contracted Provider	81,703.65
220 Social Security Contributions	1,784,594.03
230 PSERS Retirement Contributions	7,953,526.97
250 Unemployment Compensation	17,242.51
260 Workers' Compensation	189,763.12
270 Group Insurance – Self-Insurance	4,502,833.89
280 Other Post-Employment Benefits (OPEB)	44,364.35
292 Health Savings Accounts	820,125.00
Total Personnel Services – Employee Benefits	\$15,394,153.52
300 Purchased Professional and Technical Services	
322 Professional Educational Services – Ius	7,818,498.73
323 Professional Educational Services – Other Educational Agencies	17,729.79
329 Professional Educational Services – Other	614,299.38
330 Other Professional Services	374,763.91
360 Employee Training and Development Services	1,776.00
Total Purchased Professional and Technical Services	\$8,827,067.81
400 Purchased Property Services	
430 Repairs and Maintenance Services	14,952.64
440 Rentals	75,064.20
Total Purchased Property Services	\$90,016.84
500 Other Purchased Services	
510 Student Transportation Services	83,851.49
530 Communications	1,701.92
561 Tuition To Other School Districts Within the State	43,135.34
562 Tuition To Pennsylvania Charter Schools	10,989,988.75
563 Tuition To Nonpublic Schools	195,278.27
564 Tuition To Career and Technology Centers	109,109.85
567 Tuition To Approved Private Schools (APS) and PA Chartered Schools for the Deaf and Blind	197,544.81
568 Tuition To Private Residential Rehabilitative Institutions (PRRI) [In-State] and Detention Centers	119,039.26
580 Travel	14,333.08
Total Other Purchased Services	\$11,753,982.77
600 Supplies	
610 General Supplies	395,791.36
630 Food	59.53
640 Books and Periodicals	95,249.97
650 Supplies & Fees – Technology Related	193,971.77
Total Supplies	\$685,072.63
700 Property	
762 Capitalized Equipment - Replacement	15,236.15

General Fund (10)

1000 Instruction		<u>Total</u>
Total Property		\$15,236.15
800 Other Objects		
810 Dues and Fees		9,441.00
890 Miscellaneous Expenditures		105,888.49
Total Other Objects		\$115,329.49
Total 1000 Instruction		\$60,861,320.02

General Fund (10)

1100 Regular Programs – Elementary / Secondary

	<u>Elementary</u>	<u>Secondary</u>	<u>Federal</u>	<u>Total</u>
100 Personnel Services – Salaries				
100 Personnel Services – Salaries	11,784,379.69	8,612,431.67	235,470.10	20,632,281.46
Total Personnel Services – Salaries	\$11,784,379.69	\$8,612,431.67	\$235,470.10	\$20,632,281.46
200 Personnel Services – Employee Benefits				
210 Group Insurance – Contracted Provider	40,643.45	30,329.72	495.95	71,469.12
220 Social Security Contributions	874,897.38	642,204.89	17,798.57	1,534,900.84
230 PSERS Retirement Contributions	3,886,815.22	2,875,540.54	77,741.60	6,840,097.36
250 Unemployment Compensation	8,120.81	5,822.52	433.55	14,376.88
260 Workers' Compensation	87,396.33	77,421.49	1,766.11	166,583.93
270 Group Insurance – Self-Insurance	2,233,778.51	1,584,241.52	19,496.68	3,837,516.71
280 Other Post-Employment Benefits (OPEB)	18,643.11	18,643.10		37,286.21
292 Health Savings Accounts	418,875.01	286,249.99		705,125.00
Total Personnel Services – Employee Benefits	\$7,569,169.82	\$5,520,453.77	\$117,732.46	\$13,207,356.05
300 Purchased Professional and Technical Services				
323 Professional Educational Services – Other Educational Agencies	895.00	15,117.59		16,012.59
329 Professional Educational Services – Other	427,432.78	186,866.60		614,299.38
Total Purchased Professional and Technical Services	\$428,327.78	\$201,984.19		\$630,311.97
400 Purchased Property Services				
430 Repairs and Maintenance Services	4,848.18	9,941.46		14,789.64
440 Rentals	45,215.09	28,252.87		73,467.96
Total Purchased Property Services	\$50,063.27	\$38,194.33		\$88,257.60
500 Other Purchased Services				
510 Student Transportation Services	52,440.81	31,410.68		83,851.49
530 Communications		81.05		81.05
562 Tuition To Pennsylvania Charter Schools	3,910,029.13	3,910,029.12		7,820,058.25
568 Tuition To Private Residential Rehabilitative Institutions (PRRI) [In-State] and Detention Centers	975.44	975.44		1,950.88
580 Travel		1,322.32		1,322.32
Total Other Purchased Services	\$3,963,445.38	\$3,943,818.61		\$7,907,263.99
600 Supplies				
610 General Supplies	150,325.57	218,787.47	1,312.46	370,425.50
640 Books and Periodicals	63,167.66	28,933.44	427.95	92,529.05
650 Supplies & Fees – Technology Related	96,269.35	72,479.23	4,305.80	173,054.38
Total Supplies	\$309,762.58	\$320,200.14	\$6,046.21	\$636,008.93
700 Property				
762 Capitalized Equipment - Replacement	15,236.15			15,236.15
Total Property	\$15,236.15			\$15,236.15
800 Other Objects				
810 Dues and Fees	2,057.00	7,384.00		9,441.00
890 Miscellaneous Expenditures	68,101.75	35,352.92		103,454.67
Total Other Objects	\$70,158.75	\$42,736.92		\$112,895.67
Total 1100 Regular Programs – Elementary / Secondary	\$24,190,543.42	\$18,679,819.63	\$359,248.77	\$43,229,611.82

General Fund (10)

1110 Regular Programs

	<u>Elementary</u>	<u>Secondary</u>	<u>Federal</u>	<u>Total</u>
100 Personnel Services – Salaries				
100 Personnel Services – Salaries	11,784,379.69	8,612,431.67		20,396,811.36
Total Personnel Services – Salaries	\$11,784,379.69	\$8,612,431.67		\$20,396,811.36
200 Personnel Services – Employee Benefits				
210 Group Insurance – Contracted Provider	40,643.45	30,329.72		70,973.17
220 Social Security Contributions	874,897.38	642,204.89		1,517,102.27
230 PSERS Retirement Contributions	3,886,815.22	2,875,540.54		6,762,355.76
250 Unemployment Compensation	8,120.81	5,822.52		13,943.33
260 Workers' Compensation	87,396.33	77,421.49		164,817.82
270 Group Insurance – Self-Insurance	2,233,778.51	1,584,241.52		3,818,020.03
280 Other Post-Employment Benefits (OPEB)	18,643.11	18,643.10		37,286.21
292 Health Savings Accounts	418,875.01	286,249.99		705,125.00
Total Personnel Services – Employee Benefits	\$7,569,169.82	\$5,520,453.77		\$13,089,623.59
300 Purchased Professional and Technical Services				
323 Professional Educational Services – Other Educational Agencies	895.00	15,117.59		16,012.59
329 Professional Educational Services – Other	427,432.78	186,866.60		614,299.38
Total Purchased Professional and Technical Services	\$428,327.78	\$201,984.19		\$630,311.97
400 Purchased Property Services				
430 Repairs and Maintenance Services	4,848.18	9,941.46		14,789.64
440 Rentals	45,215.09	28,252.87		73,467.96
Total Purchased Property Services	\$50,063.27	\$38,194.33		\$88,257.60
500 Other Purchased Services				
510 Student Transportation Services	52,440.81	31,410.68		83,851.49
530 Communications		81.05		81.05
562 Tuition To Pennsylvania Charter Schools	3,910,029.13	3,910,029.12		7,820,058.25
568 Tuition To Private Residential Rehabilitative Institutions (PRRI) [In-State] and Detention Centers	975.44	975.44		1,950.88
580 Travel		1,322.32		1,322.32
Total Other Purchased Services	\$3,963,445.38	\$3,943,818.61		\$7,907,263.99
600 Supplies				
610 General Supplies	150,325.57	218,787.47		369,113.04
640 Books and Periodicals	63,167.66	28,933.44		92,101.10
650 Supplies & Fees – Technology Related	96,269.35	72,479.23	1,035.55	169,784.13
Total Supplies	\$309,762.58	\$320,200.14	\$1,035.55	\$630,998.27
700 Property				
762 Capitalized Equipment - Replacement	15,236.15			15,236.15
Total Property	\$15,236.15			\$15,236.15
800 Other Objects				
810 Dues and Fees	2,057.00	7,384.00		9,441.00
890 Miscellaneous Expenditures	68,101.75	35,352.92		103,454.67
Total Other Objects	\$70,158.75	\$42,736.92		\$112,895.67
Total 1110 Regular Programs	\$24,190,543.42	\$18,679,819.63	\$1,035.55	\$42,871,398.60

General Fund (10)

1190 Federally-Funded Regular Programs

	<u>Elementary</u>	<u>Secondary</u>	<u>Federal</u>	<u>Total</u>
100 Personnel Services – Salaries				
100 Personnel Services – Salaries			235,470.10	235,470.10
Total Personnel Services – Salaries			\$235,470.10	\$235,470.10
200 Personnel Services – Employee Benefits				
210 Group Insurance – Contracted Provider			495.95	495.95
220 Social Security Contributions			17,798.57	17,798.57
230 PSERS Retirement Contributions			77,741.60	77,741.60
250 Unemployment Compensation			433.55	433.55
260 Workers' Compensation			1,766.11	1,766.11
270 Group Insurance – Self-Insurance			19,496.68	19,496.68
Total Personnel Services – Employee Benefits			\$117,732.46	\$117,732.46
600 Supplies				
610 General Supplies			1,312.46	1,312.46
640 Books and Periodicals			427.95	427.95
650 Supplies & Fees – Technology Related			3,270.25	3,270.25
Total Supplies			\$5,010.66	\$5,010.66
Total 1190 Federally-Funded Regular Programs			\$358,213.22	\$358,213.22

General Fund (10)

1200 Special Programs – Elementary / Secondary

	<u>Elementary</u>	<u>Secondary</u>	<u>Federal</u>	<u>Total</u>
100 Personnel Services – Salaries				
100 Personnel Services – Salaries	1,588,905.73	1,750,885.62		3,339,791.35
Total Personnel Services – Salaries	\$1,588,905.73	\$1,750,885.62		\$3,339,791.35
200 Personnel Services – Employee Benefits				
210 Group Insurance – Contracted Provider	4,932.47	5,302.06		10,234.53
220 Social Security Contributions	118,825.35	130,233.79		249,059.14
230 PSERS Retirement Contributions	528,592.93	582,041.89		1,110,634.82
250 Unemployment Compensation	1,637.18	1,223.39		2,860.57
260 Workers' Compensation	10,999.71	12,120.80		23,120.51
270 Group Insurance – Self-Insurance	334,227.35	331,089.83		665,317.18
280 Other Post-Employment Benefits (OPEB)	3,539.07	3,539.07		7,078.14
292 Health Savings Accounts	58,750.00	56,250.00		115,000.00
Total Personnel Services – Employee Benefits	\$1,061,504.06	\$1,121,800.83		\$2,183,304.89
300 Purchased Professional and Technical Services				
322 Professional Educational Services – Ius	1,826,533.25	2,220,212.22	515,355.00	4,562,100.47
323 Professional Educational Services – Other Educational Agencies		1,687.20		1,687.20
330 Other Professional Services	271,476.21	103,287.70		374,763.91
Total Purchased Professional and Technical Services	\$2,098,009.46	\$2,325,187.12	\$515,355.00	\$4,938,551.58
400 Purchased Property Services				
430 Repairs and Maintenance Services	81.50	81.50		163.00
440 Rentals	798.13	798.11		1,596.24
Total Purchased Property Services	\$879.63	\$879.61		\$1,759.24
500 Other Purchased Services				
530 Communications	810.44	810.43		1,620.87
561 Tuition To Other School Districts Within the State		22,104.22		22,104.22
562 Tuition To Pennsylvania Charter Schools	1,584,943.51	1,584,986.99		3,169,930.50
563 Tuition To Nonpublic Schools	35,042.50	160,235.77		195,278.27
567 Tuition To Approved Private Schools (APS) and PA Chartered Schools for the Deaf and Blind	98,772.41	98,772.40		197,544.81
568 Tuition To Private Residential Rehabilitative Institutions (PRRI) [In-State] and Detention Centers	8,051.25	92,934.63		100,985.88
580 Travel	6,505.39	6,505.37		13,010.76
Total Other Purchased Services	\$1,734,125.50	\$1,966,349.81		\$3,700,475.31
600 Supplies				
610 General Supplies	17,292.03	8,073.83		25,365.86
630 Food		59.53		59.53
640 Books and Periodicals	2,150.82	570.10		2,720.92
650 Supplies & Fees – Technology Related	6,146.81	14,770.58		20,917.39
Total Supplies	\$25,589.66	\$23,474.04		\$49,063.70
800 Other Objects				
890 Miscellaneous Expenditures	697.25	1,736.57		2,433.82
Total Other Objects	\$697.25	\$1,736.57		\$2,433.82
Total 1200 Special Programs – Elementary / Secondary	\$6,509,711.29	\$7,190,313.60	\$515,355.00	\$14,215,379.89

General Fund (10)

1210 Life Skills Support

	<u>Elementary</u>	<u>Secondary</u>	<u>Federal</u>	<u>Total</u>
100 Personnel Services – Salaries				
100 Personnel Services – Salaries	107,081.98	144,244.00		251,325.98
Total Personnel Services – Salaries	\$107,081.98	\$144,244.00		\$251,325.98
200 Personnel Services – Employee Benefits				
210 Group Insurance – Contracted Provider	415.96	534.68		950.64
220 Social Security Contributions	8,048.24	10,703.67		18,751.91
230 PSERS Retirement Contributions	35,661.95	48,038.28		83,700.23
250 Unemployment Compensation	97.96	80.08		178.04
260 Workers' Compensation	741.37	998.59		1,739.96
270 Group Insurance – Self-Insurance	32,730.78	36,367.52		69,098.30
292 Health Savings Accounts	7,000.00	6,000.00		13,000.00
Total Personnel Services – Employee Benefits	\$84,696.26	\$102,722.82		\$187,419.08
300 Purchased Professional and Technical Services				
322 Professional Educational Services – lus		673,580.45	141,427.00	815,007.45
Total Purchased Professional and Technical Services		\$673,580.45	\$141,427.00	\$815,007.45
400 Purchased Property Services				
440 Rentals	31.00	30.99		61.99
Total Purchased Property Services	\$31.00	\$30.99		\$61.99
600 Supplies				
610 General Supplies	1,029.51	2,747.56		3,777.07
630 Food		59.53		59.53
640 Books and Periodicals		471.10		471.10
Total Supplies	\$1,029.51	\$3,278.19		\$4,307.70
800 Other Objects				
890 Miscellaneous Expenditures	232.25	224.07		456.32
Total Other Objects	\$232.25	\$224.07		\$456.32
Total 1210 Life Skills Support	\$193,071.00	\$924,080.52	\$141,427.00	\$1,258,578.52

General Fund (10)

1220 Sensory Support

300 Purchased Professional and Technical Services

322 Professional Educational Services – lus

Total Purchased Professional and Technical Services

600 Supplies

610 General Supplies

Total Supplies

Total 1220 Sensory Support

	<u>Elementary</u>	<u>Secondary</u>	<u>Federal</u>	<u>Total</u>
	456,630.37	283,130.73		739,761.10
	\$456,630.37	\$283,130.73		\$739,761.10
	1,519.76	1,130.60		2,650.36
	\$1,519.76	\$1,130.60		\$2,650.36
	\$458,150.13	\$284,261.33		\$742,411.46

General Fund (10)

1230 Emotional Support

	<u>Elementary</u>	<u>Secondary</u>	<u>Federal</u>	<u>Total</u>
100 Personnel Services – Salaries				
100 Personnel Services – Salaries	222,636.16	280,268.10		502,904.26
Total Personnel Services – Salaries	\$222,636.16	\$280,268.10		\$502,904.26
200 Personnel Services – Employee Benefits				
210 Group Insurance – Contracted Provider	884.37	1,044.49		1,928.86
220 Social Security Contributions	16,692.84	20,872.10		37,564.94
230 PSERS Retirement Contributions	74,145.36	93,338.94		167,484.30
250 Unemployment Compensation	161.69	160.25		321.94
260 Workers' Compensation	1,541.07	1,939.94		3,481.01
270 Group Insurance – Self-Insurance	61,385.39	61,385.35		122,770.74
292 Health Savings Accounts	10,500.00	10,500.00		21,000.00
Total Personnel Services – Employee Benefits	\$165,310.72	\$189,241.07		\$354,551.79
300 Purchased Professional and Technical Services				
322 Professional Educational Services – lus	85,326.84	338,803.58	63,973.00	488,103.42
Total Purchased Professional and Technical Services	\$85,326.84	\$338,803.58	\$63,973.00	\$488,103.42
600 Supplies				
610 General Supplies	30.49			30.49
Total Supplies	\$30.49			\$30.49
Total 1230 Emotional Support	\$473,304.21	\$808,312.75	\$63,973.00	\$1,345,589.96

General Fund (10)

1240 Academic Support

	<u>Elementary</u>	<u>Secondary</u>	<u>Federal</u>	<u>Total</u>
100 Personnel Services – Salaries				
100 Personnel Services – Salaries	997,359.54	1,181,769.58		2,179,129.12
Total Personnel Services – Salaries	\$997,359.54	\$1,181,769.58		\$2,179,129.12
200 Personnel Services – Employee Benefits				
210 Group Insurance – Contracted Provider	3,632.14	3,722.89		7,355.03
220 Social Security Contributions	74,205.98	87,683.32		161,889.30
230 PSERS Retirement Contributions	332,137.73	392,956.20		725,093.93
250 Unemployment Compensation	631.31	605.77		1,237.08
260 Workers' Compensation	6,904.62	8,181.08		15,085.70
270 Group Insurance – Self-Insurance	240,111.18	233,336.96		473,448.14
292 Health Savings Accounts	41,250.00	39,750.00		81,000.00
Total Personnel Services – Employee Benefits	\$698,872.96	\$766,236.22		\$1,465,109.18
300 Purchased Professional and Technical Services				
322 Professional Educational Services – Ius	23,425.89	239,130.45	42,075.00	304,631.34
Total Purchased Professional and Technical Services	\$23,425.89	\$239,130.45	\$42,075.00	\$304,631.34
600 Supplies				
610 General Supplies	3,293.88	89.95		3,383.83
650 Supplies & Fees – Technology Related		250.00		250.00
Total Supplies	\$3,293.88	\$339.95		\$3,633.83
800 Other Objects				
890 Miscellaneous Expenditures	465.00	1,512.50		1,977.50
Total Other Objects	\$465.00	\$1,512.50		\$1,977.50
Total 1240 Academic Support	\$1,723,417.27	\$2,188,988.70	\$42,075.00	\$3,954,480.97

General Fund (10)

	<u>Elementary</u>	<u>Secondary</u>	<u>Federal</u>	<u>Total</u>
1241 Learning Support – Public				
100 Personnel Services – Salaries				
100 Personnel Services – Salaries	879,805.89	980,397.99		1,860,203.88
Total Personnel Services – Salaries	\$879,805.89	\$980,397.99		\$1,860,203.88
200 Personnel Services – Employee Benefits				
210 Group Insurance – Contracted Provider	3,285.74	3,198.07		6,483.81
220 Social Security Contributions	65,357.23	72,698.91		138,056.14
230 PSERS Retirement Contributions	292,988.30	326,506.34		619,494.64
250 Unemployment Compensation	570.68	504.72		1,075.40
260 Workers' Compensation	6,090.72	6,786.96		12,877.68
270 Group Insurance – Self-Insurance	218,554.23	223,129.71		441,683.94
292 Health Savings Accounts	37,500.00	37,500.00		75,000.00
Total Personnel Services – Employee Benefits	\$624,346.90	\$670,324.71		\$1,294,671.61
300 Purchased Professional and Technical Services				
322 Professional Educational Services – lus	22,425.89	238,130.45	42,075.00	302,631.34
Total Purchased Professional and Technical Services	\$22,425.89	\$238,130.45	\$42,075.00	\$302,631.34
Total 1241 Learning Support – Public	\$1,526,578.68	\$1,888,853.15	\$42,075.00	\$3,457,506.83

General Fund (10)

1243 Gifted Support

	<u>Elementary</u>	<u>Secondary</u>	<u>Federal</u>	<u>Total</u>
100 Personnel Services – Salaries				
100 Personnel Services – Salaries	117,553.65	201,371.59		318,925.24
Total Personnel Services – Salaries	\$117,553.65	\$201,371.59		\$318,925.24
200 Personnel Services – Employee Benefits				
210 Group Insurance – Contracted Provider	346.40	524.82		871.22
220 Social Security Contributions	8,848.75	14,984.41		23,833.16
230 PSERS Retirement Contributions	39,149.43	66,449.86		105,599.29
250 Unemployment Compensation	60.63	101.05		161.68
260 Workers' Compensation	813.90	1,394.12		2,208.02
270 Group Insurance – Self-Insurance	21,556.95	10,207.25		31,764.20
292 Health Savings Accounts	3,750.00	2,250.00		6,000.00
Total Personnel Services – Employee Benefits	\$74,526.06	\$95,911.51		\$170,437.57
300 Purchased Professional and Technical Services				
322 Professional Educational Services – lus	1,000.00	1,000.00		2,000.00
Total Purchased Professional and Technical Services	\$1,000.00	\$1,000.00		\$2,000.00
600 Supplies				
610 General Supplies	3,293.88	89.95		3,383.83
650 Supplies & Fees – Technology Related		250.00		250.00
Total Supplies	\$3,293.88	\$339.95		\$3,633.83
800 Other Objects				
890 Miscellaneous Expenditures	465.00	1,512.50		1,977.50
Total Other Objects	\$465.00	\$1,512.50		\$1,977.50
Total 1243 Gifted Support	\$196,838.59	\$300,135.55		\$496,974.14

General Fund (10)

1270 Multi-Handicapped Support

300 Purchased Professional and Technical Services

322 Professional Educational Services – lus

Total Purchased Professional and Technical Services

Total 1270 Multi-Handicapped Support

Elementary

Secondary

Federal

Total

48,908.04

120,046.99

168,955.03

\$48,908.04

\$120,046.99

\$168,955.03

\$48,908.04

\$120,046.99

\$168,955.03

General Fund (10)

1280 Early Intervention Support

300 Purchased Professional and Technical Services

322 Professional Educational Services – lus

Total Purchased Professional and Technical Services

Total 1280 Early Intervention Support

Elementary

Secondary

Federal

Total

121,486.38

121,486.38

\$121,486.38

\$121,486.38

\$121,486.38

\$121,486.38

General Fund (10)

	<u>Elementary</u>	<u>Secondary</u>	<u>Federal</u>	<u>Total</u>
1290 Special Programs - Other Support				
100 Personnel Services – Salaries				
100 Personnel Services – Salaries	261,828.05	144,603.94		406,431.99
Total Personnel Services – Salaries	\$261,828.05	\$144,603.94		\$406,431.99
200 Personnel Services – Employee Benefits				
220 Social Security Contributions	19,878.29	10,974.70		30,852.99
230 PSERS Retirement Contributions	86,647.89	47,708.47		134,356.36
250 Unemployment Compensation	746.22	377.29		1,123.51
260 Workers' Compensation	1,812.65	1,001.19		2,813.84
280 Other Post-Employment Benefits (OPEB)	3,539.07	3,539.07		7,078.14
Total Personnel Services – Employee Benefits	\$112,624.12	\$63,600.72		\$176,224.84
300 Purchased Professional and Technical Services				
322 Professional Educational Services – lus	1,090,755.73	565,520.02	267,880.00	1,924,155.75
323 Professional Educational Services – Other Educational Agencies		1,687.20		1,687.20
330 Other Professional Services	271,476.21	103,287.70		374,763.91
Total Purchased Professional and Technical Services	\$1,362,231.94	\$670,494.92	\$267,880.00	\$2,300,606.86
400 Purchased Property Services				
430 Repairs and Maintenance Services	81.50	81.50		163.00
440 Rentals	767.13	767.12		1,534.25
Total Purchased Property Services	\$848.63	\$848.62		\$1,697.25
500 Other Purchased Services				
530 Communications	810.44	810.43		1,620.87
561 Tuition To Other School Districts Within the State		22,104.22		22,104.22
562 Tuition To Pennsylvania Charter Schools	1,584,943.51	1,584,986.99		3,169,930.50
563 Tuition To Nonpublic Schools	35,042.50	160,235.77		195,278.27
567 Tuition To Approved Private Schools (APS) and PA Chartered Schools for the Deaf and Blind	98,772.41	98,772.40		197,544.81
568 Tuition To Private Residential Rehabilitative Institutions (PRRI) [In-State] and Detention Centers	8,051.25	92,934.63		100,985.88
580 Travel	6,505.39	6,505.37		13,010.76
Total Other Purchased Services	\$1,734,125.50	\$1,966,349.81		\$3,700,475.31
600 Supplies				
610 General Supplies	11,418.39	4,105.72		15,524.11
640 Books and Periodicals	2,150.82	99.00		2,249.82
650 Supplies & Fees – Technology Related	6,146.81	14,520.58		20,667.39
Total Supplies	\$19,716.02	\$18,725.30		\$38,441.32
Total 1290 Special Programs - Other Support	\$3,491,374.26	\$2,864,623.31	\$267,880.00	\$6,623,877.57

General Fund (10)

1300 Vocational Education

300 Purchased Professional and Technical Services

322 Professional Educational Services – Ius

Elementary

Secondary

Federal

Total

3,245,912.00

3,245,912.00

Total Purchased Professional and Technical Services

\$3,245,912.00

\$3,245,912.00

500 Other Purchased Services

561 Tuition To Other School Districts Within the State

564 Tuition To Career and Technology Centers

21,031.12

21,031.12

109,109.85

109,109.85

Total Other Purchased Services

\$130,140.97

\$130,140.97

Total 1300 Vocational Education

\$3,376,052.97

\$3,376,052.97

General Fund (10)

	<u>Elementary</u>	<u>Secondary</u>	<u>Federal</u>	<u>Total</u>
1400 Other Instructional Programs – Elementary / Secondary				
100 Personnel Services – Salaries				
100 Personnel Services – Salaries	625.50	7,762.50		8,388.00
Total Personnel Services – Salaries	\$625.50	\$7,762.50		\$8,388.00
200 Personnel Services – Employee Benefits				
220 Social Security Contributions	47.51	586.54		634.05
230 PSERS Retirement Contributions	208.32	2,586.47		2,794.79
250 Unemployment Compensation	2.53	2.53		5.06
260 Workers' Compensation	4.34	54.34		58.68
Total Personnel Services – Employee Benefits	\$262.70	\$3,229.88		\$3,492.58
300 Purchased Professional and Technical Services				
322 Professional Educational Services – Ius	485.48	10,000.78		10,486.26
323 Professional Educational Services – Other Educational Agencies	15.00	15.00		30.00
Total Purchased Professional and Technical Services	\$500.48	\$10,015.78		\$10,516.26
500 Other Purchased Services				
568 Tuition To Private Residential Rehabilitative Institutions (PRRI) [In-State] and Detention Centers	8,051.25	8,051.25		16,102.50
Total Other Purchased Services	\$8,051.25	\$8,051.25		\$16,102.50
Total 1400 Other Instructional Programs – Elementary / Secondary	\$9,439.93	\$29,059.41		\$38,499.34

General Fund (10)

1420 Summer School

	<u>Elementary</u>	<u>Secondary</u>	<u>Federal</u>	<u>Total</u>
100 Personnel Services – Salaries				
100 Personnel Services – Salaries		6,750.00		6,750.00
Total Personnel Services – Salaries		\$6,750.00		\$6,750.00
200 Personnel Services – Employee Benefits				
220 Social Security Contributions		510.00		510.00
230 PSERS Retirement Contributions		2,249.27		2,249.27
260 Workers' Compensation		47.31		47.31
Total Personnel Services – Employee Benefits		\$2,806.58		\$2,806.58
300 Purchased Professional and Technical Services				
323 Professional Educational Services – Other Educational Agencies	15.00	15.00		30.00
Total Purchased Professional and Technical Services	\$15.00	\$15.00		\$30.00
Total 1420 Summer School	\$15.00	\$9,571.58		\$9,586.58

General Fund (10)

	<u>Elementary</u>	<u>Secondary</u>	<u>Federal</u>	<u>Total</u>
1430 Homebound Instruction				
100 Personnel Services – Salaries				
100 Personnel Services – Salaries	625.50	625.50		1,251.00
Total Personnel Services – Salaries	\$625.50	\$625.50		\$1,251.00
200 Personnel Services – Employee Benefits				
220 Social Security Contributions	47.51	47.51		95.02
230 PSERS Retirement Contributions	208.32	208.31		416.63
250 Unemployment Compensation	2.53	2.53		5.06
260 Workers' Compensation	4.34	4.33		8.67
Total Personnel Services – Employee Benefits	\$262.70	\$262.68		\$525.38
Total 1430 Homebound Instruction	\$888.20	\$888.18		\$1,776.38

General Fund (10)

	<u>Elementary</u>	<u>Secondary</u>	<u>Federal</u>	<u>Total</u>
1440 Alternative Regular Education Programs				
300 <u>Purchased Professional and Technical Services</u>				
322 Professional Educational Services – Ius	485.48	10,000.78		10,486.26
Total Purchased Professional and Technical Services	\$485.48	\$10,000.78		\$10,486.26
500 <u>Other Purchased Services</u>				
568 Tuition To Private Residential Rehabilitative Institutions (PRRI) [In-State] and Detention Centers	8,051.25	8,051.25		16,102.50
Total Other Purchased Services	\$8,051.25	\$8,051.25		\$16,102.50
Total 1440 Alternative Regular Education Programs	\$8,536.73	\$18,052.03		\$26,588.76

General Fund (10)

1441 Adjudicated / Court-Placed Programs

500 Other Purchased Services

568 Tuition To Private Residential Rehabilitative Institutions (PRRI) [In-State] and Detention Centers

Total Other Purchased Services

Total 1441 Adjudicated / Court-Placed Programs

	<u>Elementary</u>	<u>Secondary</u>	<u>Federal</u>	<u>Total</u>
	8,051.25	8,051.25		16,102.50
	\$8,051.25	\$8,051.25		\$16,102.50
	\$8,051.25	\$8,051.25		\$16,102.50

General Fund (10)

1442 Alternative Education Programs

300 Purchased Professional and Technical Services

322 Professional Educational Services – lus

Total Purchased Professional and Technical Services

Total 1442 Alternative Education Programs

	<u>Elementary</u>	<u>Secondary</u>	<u>Federal</u>	<u>Total</u>
	485.48	10,000.78		10,486.26
	\$485.48	\$10,000.78		\$10,486.26
	\$485.48	\$10,000.78		\$10,486.26

General Fund (10)

1500 Nonpublic School Programs

300 Purchased Professional and Technical Services

360 Employee Training and Development Services

Total Purchased Professional and Technical Services

Total 1500 Nonpublic School Programs

Elementary

Secondary

Federal

Total

1,776.00

1,776.00

\$1,776.00

\$1,776.00

\$1,776.00

\$1,776.00

LEA : 124150503 Avon Grove SD

Printed 11/21/2019 1:41:39 PM

General Fund (10)

2000 Support Services

Total

100 Personnel Services – Salaries

100 Personnel Services – Salaries 7,971,117.73

Total Personnel Services – Salaries

\$7,971,117.73

200 Personnel Services – Employee Benefits

210 Group Insurance – Contracted Provider 29,329.22

220 Social Security Contributions 580,015.22

230 PSERS Retirement Contributions 2,622,698.63

240 Tuition Reimbursement 247,868.98

250 Unemployment Compensation 5,550.32

260 Workers' Compensation 55,290.84

270 Group Insurance – Self-Insurance 1,337,958.88

280 Other Post-Employment Benefits (OPEB) 77,480.28

292 Health Savings Accounts 239,750.00

299 All Other Employee Benefits 422.50

Total Personnel Services – Employee Benefits

\$5,196,364.87

300 Purchased Professional and Technical Services

310 Official / Administrative Services 123,878.43

322 Professional Educational Services – Ius 12,405.91

329 Professional Educational Services – Other 172,351.01

330 Other Professional Services 501,897.25

340 Technical Services 127,301.87

350 Security / Safety Services 72,264.75

360 Employee Training and Development Services 116,433.97

390 Other Purchased Professional and Technical Services 12,370.00

Total Purchased Professional and Technical Services

\$1,138,903.19

400 Purchased Property Services

410 Cleaning Services 1,118,346.00

420 Utility Services 180,455.89

430 Repairs and Maintenance Services 269,189.47

440 Rentals 272,396.38

460 Extermination Services 9,240.00

490 Other Purchased Property Services 125.00

Total Purchased Property Services

\$1,849,752.74

500 Other Purchased Services

511 Student Transportation Services from Another LEA Within the State 17,950.00

513 Contracted Carriers 6,031,148.70

516 Student Transportation Services From the IU 7,820.87

520 Insurance – General 81,069.00

521 Fire Insurance 139,157.00

522 Automotive Liability Insurance 9,712.00

523 General Property and Liability Insurance 28,727.00

530 Communications 103,524.92

549 Other Advertising/Public Relations 2,966.31

550 Printing and Binding 3,287.48

LEA : 124150503 Avon Grove SD

Printed 11/21/2019 1:41:39 PM

General Fund (10)

2000 Support Services

Total

500 Other Purchased Services

580 Travel	33,777.89
595 IU Payments By Withholding	31,541.74
596 Direct Payments To Intermediate Units	233,766.61
599 Other Miscellaneous Purchased Services	638.18

Total Other Purchased Services	\$6,725,087.70
---------------------------------------	-----------------------

600 Supplies

610 General Supplies	401,692.22
620 Energy	712,202.58
630 Food	12,800.23
640 Books and Periodicals	86,082.03
650 Supplies & Fees – Technology Related	342,344.59

Total Supplies	\$1,555,121.65
-----------------------	-----------------------

700 Property

752 Capital Equipment – Original and Additional	23,309.80
756 Capitalized Technology Equipment – Original	800,578.25
766 Capitalized Technology Equipment – Replacement	43,075.63

Total Property	\$866,963.68
-----------------------	---------------------

800 Other Objects

810 Dues and Fees	42,702.23
820 Claims and Judgments Against the LEA	106,661.74
890 Miscellaneous Expenditures	67,205.86
899 Pass-Through Funds	184,784.15

Total Other Objects	\$401,353.98
----------------------------	---------------------

Total 2000 Support Services	\$25,704,665.54
------------------------------------	------------------------

LEA : 124150503 Avon Grove SD

Printed 11/21/2019 1:41:39 PM

Page - 3 of 64

General Fund (10)**2100 Support Services – Students**

	<u>Elementary</u>	<u>Secondary</u>	<u>Federal</u>	<u>Total</u>
100 Personnel Services – Salaries				
100 Personnel Services – Salaries	1,194,425.01	1,131,578.60		2,483,498.52
Total Personnel Services – Salaries	\$1,194,425.01	\$1,131,578.60		\$2,483,498.52
200 Personnel Services – Employee Benefits				
210 Group Insurance – Contracted Provider	3,888.61	3,542.28		7,996.40
220 Social Security Contributions	88,549.15	83,867.80		184,117.62
230 PSERS Retirement Contributions	396,110.13	375,714.10		824,185.89
250 Unemployment Compensation	837.35	849.49		1,848.76
260 Workers' Compensation	8,271.51	7,836.52		17,200.45
270 Group Insurance – Self-Insurance	176,224.98	202,236.71		414,829.23
292 Health Savings Accounts	30,750.00	36,750.00		73,500.00
Total Personnel Services – Employee Benefits	\$704,631.73	\$710,796.90		\$1,523,678.35
300 Purchased Professional and Technical Services				
322 Professional Educational Services – Ius	284.00	284.00		568.00
330 Other Professional Services	61,085.96	40,848.13		101,934.09
Total Purchased Professional and Technical Services	\$61,369.96	\$41,132.13		\$102,502.09
400 Purchased Property Services				
410 Cleaning Services	105.84	105.84		211.68
440 Rentals	2,136.06	2,136.06		4,272.12
Total Purchased Property Services	\$2,241.90	\$2,241.90		\$4,483.80
500 Other Purchased Services				
530 Communications		1,287.46		1,287.46
549 Other Advertising/Public Relations	350.06	350.07		700.13
550 Printing and Binding	15.75	15.75		31.50
580 Travel	1,574.02	2,443.43		4,017.45
Total Other Purchased Services	\$1,939.83	\$4,096.71		\$6,036.54
600 Supplies				
610 General Supplies	10,259.34	9,624.81		19,884.15
630 Food	488.92	847.03		1,335.95
640 Books and Periodicals	190.20	262.08		452.28
650 Supplies & Fees – Technology Related	7,924.54	10,688.05		18,612.59
Total Supplies	\$18,863.00	\$21,421.97		\$40,284.97
800 Other Objects				
810 Dues and Fees	85.00	85.00		170.00
890 Miscellaneous Expenditures		65,595.00		65,595.00
Total Other Objects	\$85.00	\$65,680.00		\$65,765.00
Total 2100 Support Services – Students	\$1,983,556.43	\$1,976,948.21		\$4,226,249.27

General Fund (10)

2110 Supervision of Student Services

	<u>Elementary</u>	<u>Secondary</u>	<u>Federal</u>	<u>Total</u>
100 Personnel Services – Salaries				
100 Personnel Services – Salaries	144,108.26	135,824.53		279,932.79
Total Personnel Services – Salaries	\$144,108.26	\$135,824.53		\$279,932.79
200 Personnel Services – Employee Benefits				
210 Group Insurance – Contracted Provider	546.62	546.61		1,093.23
220 Social Security Contributions	10,514.59	9,880.11		20,394.70
230 PSERS Retirement Contributions	47,601.77	44,842.36		92,444.13
250 Unemployment Compensation	135.42	98.86		234.28
260 Workers' Compensation	1,000.41	942.84		1,943.25
270 Group Insurance – Self-Insurance	21,789.60	21,789.58		43,579.18
292 Health Savings Accounts	3,750.00	3,750.00		7,500.00
Total Personnel Services – Employee Benefits	\$85,338.41	\$81,850.36		\$167,188.77
300 Purchased Professional and Technical Services				
322 Professional Educational Services – lus	160.00	160.00		320.00
330 Other Professional Services	16,832.40	10,568.57		27,400.97
Total Purchased Professional and Technical Services	\$16,992.40	\$10,728.57		\$27,720.97
400 Purchased Property Services				
410 Cleaning Services	105.84	105.84		211.68
440 Rentals	2,136.06	2,136.06		4,272.12
Total Purchased Property Services	\$2,241.90	\$2,241.90		\$4,483.80
500 Other Purchased Services				
549 Other Advertising/Public Relations	350.06	350.07		700.13
550 Printing and Binding	15.75	15.75		31.50
580 Travel	1,574.02	1,574.02		3,148.04
Total Other Purchased Services	\$1,939.83	\$1,939.84		\$3,879.67
600 Supplies				
610 General Supplies	587.44	587.43		1,174.87
630 Food	270.87	270.87		541.74
640 Books and Periodicals	190.20	190.20		380.40
650 Supplies & Fees – Technology Related	2,211.20	2,211.20		4,422.40
Total Supplies	\$3,259.71	\$3,259.70		\$6,519.41
800 Other Objects				
810 Dues and Fees	85.00	85.00		170.00
Total Other Objects	\$85.00	\$85.00		\$170.00
Total 2110 Supervision of Student Services	\$253,965.51	\$235,929.90		\$489,895.41

LEA : 124150503 Avon Grove SD

Printed 11/21/2019 1:41:39 PM

Page - 5 of 64

General Fund (10)**2111 Supervision of Student Services – Head of Component**

	<u>Elementary</u>	<u>Secondary</u>	<u>Federal</u>	<u>Total</u>
100 Personnel Services – Salaries				
100 Personnel Services – Salaries	138,089.69	124,917.34		263,007.03
Total Personnel Services – Salaries	\$138,089.69	\$124,917.34		\$263,007.03
200 Personnel Services – Employee Benefits				
210 Group Insurance – Contracted Provider	546.62	546.61		1,093.23
220 Social Security Contributions	10,057.44	9,058.05		19,115.49
230 PSERS Retirement Contributions	45,640.64	41,253.14		86,893.78
250 Unemployment Compensation	123.15	83.52		206.67
260 Workers' Compensation	958.72	867.25		1,825.97
270 Group Insurance – Self-Insurance	21,789.60	21,789.58		43,579.18
292 Health Savings Accounts	3,750.00	3,750.00		7,500.00
Total Personnel Services – Employee Benefits	\$82,866.17	\$77,348.15		\$160,214.32
300 Purchased Professional and Technical Services				
322 Professional Educational Services – lus	160.00	160.00		320.00
330 Other Professional Services	16,832.40	10,568.57		27,400.97
Total Purchased Professional and Technical Services	\$16,992.40	\$10,728.57		\$27,720.97
400 Purchased Property Services				
410 Cleaning Services	105.84	105.84		211.68
440 Rentals	2,136.06	2,136.06		4,272.12
Total Purchased Property Services	\$2,241.90	\$2,241.90		\$4,483.80
500 Other Purchased Services				
549 Other Advertising/Public Relations	350.06	350.07		700.13
550 Printing and Binding	15.75	15.75		31.50
580 Travel	1,574.02	1,574.02		3,148.04
Total Other Purchased Services	\$1,939.83	\$1,939.84		\$3,879.67
600 Supplies				
610 General Supplies	587.44	587.43		1,174.87
630 Food	270.87	270.87		541.74
640 Books and Periodicals	190.20	190.20		380.40
650 Supplies & Fees – Technology Related	2,211.20	2,211.20		4,422.40
Total Supplies	\$3,259.71	\$3,259.70		\$6,519.41
800 Other Objects				
810 Dues and Fees	85.00	85.00		170.00
Total Other Objects	\$85.00	\$85.00		\$170.00
Total 2111 Supervision of Student Services – Head of Component	\$245,474.70	\$220,520.50		\$465,995.20

General Fund (10)

2119 Supervision of Student Services – All Other Supervision

	<u>Elementary</u>	<u>Secondary</u>	<u>Federal</u>	<u>Total</u>
100 Personnel Services – Salaries				
100 Personnel Services – Salaries	6,018.57	10,907.19		16,925.76
Total Personnel Services – Salaries	\$6,018.57	\$10,907.19		\$16,925.76
200 Personnel Services – Employee Benefits				
220 Social Security Contributions	457.15	822.06		1,279.21
230 PSERS Retirement Contributions	1,961.13	3,589.22		5,550.35
250 Unemployment Compensation	12.27	15.34		27.61
260 Workers' Compensation	41.69	75.59		117.28
Total Personnel Services – Employee Benefits	\$2,472.24	\$4,502.21		\$6,974.45
Total 2119 Supervision of Student Services – All Other Supervision	\$8,490.81	\$15,409.40		\$23,900.21

General Fund (10)

	<u>Elementary</u>	<u>Secondary</u>	<u>Federal</u>	<u>Total</u>
2120 Guidance Services				
100 Personnel Services – Salaries				
100 Personnel Services – Salaries	590,309.96	742,741.28		1,333,051.24
Total Personnel Services – Salaries	\$590,309.96	\$742,741.28		\$1,333,051.24
200 Personnel Services – Employee Benefits				
210 Group Insurance – Contracted Provider	1,784.55	2,190.22		3,974.77
220 Social Security Contributions	43,496.07	55,277.38		98,773.45
230 PSERS Retirement Contributions	195,594.20	246,858.56		442,452.76
250 Unemployment Compensation	459.41	629.38		1,088.79
260 Workers' Compensation	4,086.40	5,141.91		9,228.31
270 Group Insurance – Self-Insurance	85,768.86	134,987.73		220,756.59
292 Health Savings Accounts	15,000.00	25,500.00		40,500.00
Total Personnel Services – Employee Benefits	\$346,189.49	\$470,585.18		\$816,774.67
300 Purchased Professional and Technical Services				
322 Professional Educational Services – lus	124.00	124.00		248.00
330 Other Professional Services		11,826.00		11,826.00
Total Purchased Professional and Technical Services	\$124.00	\$11,950.00		\$12,074.00
500 Other Purchased Services				
530 Communications		1,287.46		1,287.46
580 Travel		869.41		869.41
Total Other Purchased Services		\$2,156.87		\$2,156.87
600 Supplies				
610 General Supplies	2,169.79	1,535.27		3,705.06
630 Food	218.05	576.16		794.21
640 Books and Periodicals		71.88		71.88
650 Supplies & Fees – Technology Related	5,680.84	8,444.35		14,125.19
Total Supplies	\$8,068.68	\$10,627.66		\$18,696.34
800 Other Objects				
890 Miscellaneous Expenditures		65,595.00		65,595.00
Total Other Objects		\$65,595.00		\$65,595.00
Total 2120 Guidance Services	\$944,692.13	\$1,303,655.99		\$2,248,348.12

General Fund (10)

2130 Attendance Services

Elementary

Secondary

Federal

Total

100 Personnel Services – Salaries

100 Personnel Services – Salaries

94,445.14

Total Personnel Services – Salaries

\$94,445.14

200 Personnel Services – Employee Benefits

210 Group Insurance – Contracted Provider

241.63

220 Social Security Contributions

7,038.03

230 PSERS Retirement Contributions

31,363.86

250 Unemployment Compensation

121.49

260 Workers' Compensation

655.88

270 Group Insurance – Self-Insurance

18,183.77

292 Health Savings Accounts

3,000.00

Total Personnel Services – Employee Benefits

\$60,604.66

Total 2130 Attendance Services

\$155,049.80

General Fund (10)

	<u>Elementary</u>	<u>Secondary</u>	<u>Federal</u>	<u>Total</u>
2140 Psychological Services				
100 Personnel Services – Salaries				
100 Personnel Services – Salaries	193,457.79	210,141.79		403,599.58
Total Personnel Services – Salaries	\$193,457.79	\$210,141.79		\$403,599.58
200 Personnel Services – Employee Benefits				
210 Group Insurance – Contracted Provider	631.47	670.43		1,301.90
220 Social Security Contributions	14,522.82	15,628.20		30,151.02
230 PSERS Retirement Contributions	64,179.32	69,735.72		133,915.04
250 Unemployment Compensation	101.04	101.04		202.08
260 Workers' Compensation	1,339.59	1,455.02		2,794.61
270 Group Insurance – Self-Insurance	18,183.77	36,367.52		54,551.29
292 Health Savings Accounts	3,000.00	6,000.00		9,000.00
Total Personnel Services – Employee Benefits	\$101,958.01	\$129,957.93		\$231,915.94
300 Purchased Professional and Technical Services				
330 Other Professional Services	44,253.56	18,453.56		62,707.12
Total Purchased Professional and Technical Services	\$44,253.56	\$18,453.56		\$62,707.12
600 Supplies				
610 General Supplies	7,502.11	7,502.11		15,004.22
650 Supplies & Fees – Technology Related	32.50	32.50		65.00
Total Supplies	\$7,534.61	\$7,534.61		\$15,069.22
Total 2140 Psychological Services	\$347,203.97	\$366,087.89		\$713,291.86

General Fund (10)

2150 Speech Pathology and Audiology Services

	<u>Elementary</u>	<u>Secondary</u>	<u>Federal</u>	<u>Total</u>
100 Personnel Services – Salaries				
100 Personnel Services – Salaries	266,549.00	42,871.00		309,420.00
Total Personnel Services – Salaries	\$266,549.00	\$42,871.00		\$309,420.00
200 Personnel Services – Employee Benefits				
210 Group Insurance – Contracted Provider	925.97	135.02		1,060.99
220 Social Security Contributions	20,015.67	3,082.11		23,097.78
230 PSERS Retirement Contributions	88,734.84	14,277.46		103,012.30
250 Unemployment Compensation	141.48	20.21		161.69
260 Workers' Compensation	1,845.11	296.75		2,141.86
270 Group Insurance – Self-Insurance	50,482.75	9,091.88		59,574.63
292 Health Savings Accounts	9,000.00	1,500.00		10,500.00
Total Personnel Services – Employee Benefits	\$171,145.82	\$28,403.43		\$199,549.25
Total 2150 Speech Pathology and Audiology Services	\$437,694.82	\$71,274.43		\$508,969.25

General Fund (10)

2170 Student Accounting Services

100 Personnel Services – Salaries

100 Personnel Services – Salaries 63,049.77

Total Personnel Services – Salaries \$63,049.77

200 Personnel Services – Employee Benefits

210 Group Insurance – Contracted Provider 323.88

220 Social Security Contributions 4,662.64

230 PSERS Retirement Contributions 20,997.80

250 Unemployment Compensation 40.43

260 Workers' Compensation 436.54

270 Group Insurance – Self-Insurance 18,183.77

292 Health Savings Accounts 3,000.00

Total Personnel Services – Employee Benefits \$47,645.06

Total 2170 Student Accounting Services \$110,694.83

Elementary

Secondary

Federal

Total

General Fund (10)

2200 Support Services – Instructional Staff

	<u>Elementary</u>	<u>Secondary</u>	<u>Federal</u>	<u>Total</u>
100 Personnel Services – Salaries				
100 Personnel Services – Salaries	538,063.09	612,477.01	49,140.47	1,199,680.57
Total Personnel Services – Salaries	\$538,063.09	\$612,477.01	\$49,140.47	\$1,199,680.57
200 Personnel Services – Employee Benefits				
210 Group Insurance – Contracted Provider	1,133.52	1,783.22		2,916.74
220 Social Security Contributions	40,754.06	44,606.46	3,702.17	89,062.69
230 PSERS Retirement Contributions	176,655.75	201,159.51	16,427.17	394,242.43
240 Tuition Reimbursement	111,818.50	74,063.50	10,000.00	195,882.00
250 Unemployment Compensation	568.69	263.15	35.32	867.16
260 Workers' Compensation	3,735.04	4,241.18	347.73	8,323.95
270 Group Insurance – Self-Insurance	26,710.32	50,597.34		77,307.66
292 Health Savings Accounts	7,500.00	9,000.00		16,500.00
Total Personnel Services – Employee Benefits	\$368,875.88	\$385,714.36	\$30,512.39	\$785,102.63
300 Purchased Professional and Technical Services				
322 Professional Educational Services – Ius	5,628.96	5,628.95	580.00	11,837.91
329 Professional Educational Services – Other	82,329.08	57,148.95		139,478.03
340 Technical Services		11,410.84		11,410.84
360 Employee Training and Development Services	17,184.72	25,289.31	39,771.86	82,245.89
390 Other Purchased Professional and Technical Services	30.00	30.00		60.00
Total Purchased Professional and Technical Services	\$105,172.76	\$99,508.05	\$40,351.86	\$245,032.67
400 Purchased Property Services				
430 Repairs and Maintenance Services		824.75		824.75
Total Purchased Property Services		\$824.75		\$824.75
500 Other Purchased Services				
530 Communications	18,010.83	18,341.16		36,351.99
580 Travel	1,764.54	8,774.75	318.46	10,857.75
Total Other Purchased Services	\$19,775.37	\$27,115.91	\$318.46	\$47,209.74
600 Supplies				
610 General Supplies	38,036.16	39,645.31	111.80	77,793.27
630 Food	414.50	414.48		828.98
640 Books and Periodicals	50,692.32	25,180.22	1,250.92	77,123.46
650 Supplies & Fees – Technology Related	10,617.14	37,625.86		48,243.00
Total Supplies	\$99,760.12	\$102,865.87	\$1,362.72	\$203,988.71
800 Other Objects				
810 Dues and Fees	1,172.00	1,172.00		2,344.00
Total Other Objects	\$1,172.00	\$1,172.00		\$2,344.00
Total 2200 Support Services – Instructional Staff	\$1,132,819.22	\$1,229,677.95	\$121,685.90	\$2,484,183.07

General Fund (10)

2220 Technology Support Services

100 Personnel Services – Salaries

	<u>Elementary</u>	<u>Secondary</u>	<u>Federal</u>	<u>Total</u>
100 Personnel Services – Salaries	61,083.78	101,370.00		162,453.78
Total Personnel Services – Salaries	\$61,083.78	\$101,370.00		\$162,453.78

200 Personnel Services – Employee Benefits

210 Group Insurance – Contracted Provider		270.05		270.05
220 Social Security Contributions	4,536.41	7,222.55		11,758.96
230 PSERS Retirement Contributions	20,220.63	33,060.22		53,280.85
250 Unemployment Compensation	40.19	40.42		80.61
260 Workers' Compensation	422.80	701.86		1,124.66
270 Group Insurance – Self-Insurance		6,834.07		6,834.07
292 Health Savings Accounts	3,000.00	1,500.00		4,500.00
Total Personnel Services – Employee Benefits	\$28,220.03	\$49,629.17		\$77,849.20

300 Purchased Professional and Technical Services

390 Other Purchased Professional and Technical Services	30.00	30.00		60.00
Total Purchased Professional and Technical Services	\$30.00	\$30.00		\$60.00

500 Other Purchased Services

530 Communications	15,876.67	15,876.67		31,753.34
580 Travel	110.37	110.36		220.73
Total Other Purchased Services	\$15,987.04	\$15,987.03		\$31,974.07
Total 2220 Technology Support Services	\$105,320.85	\$167,016.20		\$272,337.05

General Fund (10)

2250 School Library Services

	<u>Elementary</u>	<u>Secondary</u>	<u>Federal</u>	<u>Total</u>
100 Personnel Services – Salaries				
100 Personnel Services – Salaries	73,512.99	200,579.16		274,092.15
Total Personnel Services – Salaries	\$73,512.99	\$200,579.16		\$274,092.15
200 Personnel Services – Employee Benefits				
210 Group Insurance – Contracted Provider	67.57	472.51		540.08
220 Social Security Contributions	5,582.07	15,133.25		20,715.32
230 PSERS Retirement Contributions	23,186.97	65,347.57		88,534.54
250 Unemployment Compensation	160.66	150.50		311.16
260 Workers' Compensation	508.94	1,388.66		1,897.60
270 Group Insurance – Self-Insurance	267.23	17,320.20		17,587.43
292 Health Savings Accounts		3,000.00		3,000.00
Total Personnel Services – Employee Benefits	\$29,773.44	\$102,812.69		\$132,586.13
400 Purchased Property Services				
430 Repairs and Maintenance Services		824.75		824.75
Total Purchased Property Services		\$824.75		\$824.75
500 Other Purchased Services				
530 Communications		64.99		64.99
Total Other Purchased Services		\$64.99		\$64.99
600 Supplies				
610 General Supplies	1,524.56	3,167.22		4,691.78
640 Books and Periodicals	9,645.68	1,883.06		11,528.74
650 Supplies & Fees – Technology Related	632.00	27,640.74		28,272.74
Total Supplies	\$11,802.24	\$32,691.02		\$44,493.26
800 Other Objects				
810 Dues and Fees	147.50	147.50		295.00
Total Other Objects	\$147.50	\$147.50		\$295.00
Total 2250 School Library Services	\$115,236.17	\$337,120.11		\$452,356.28

General Fund (10)

2260 Instruction and Curriculum Development Services

	<u>Elementary</u>	<u>Secondary</u>	<u>Federal</u>	<u>Total</u>
100 Personnel Services – Salaries				
100 Personnel Services – Salaries	326,478.97	295,765.51	7,101.00	629,345.48
Total Personnel Services – Salaries	\$326,478.97	\$295,765.51	\$7,101.00	\$629,345.48
200 Personnel Services – Employee Benefits				
210 Group Insurance – Contracted Provider	1,065.95	1,040.66		2,106.61
220 Social Security Contributions	24,787.56	21,229.52	536.68	46,553.76
230 PSERS Retirement Contributions	107,635.59	97,835.34	2,373.86	207,844.79
250 Unemployment Compensation	106.58	67.94		174.52
260 Workers' Compensation	2,260.04	2,047.35	53.27	4,360.66
270 Group Insurance – Self-Insurance	26,443.09	26,443.07		52,886.16
292 Health Savings Accounts	4,500.00	4,500.00		9,000.00
Total Personnel Services – Employee Benefits	\$166,798.81	\$153,163.88	\$2,963.81	\$322,926.50
300 Purchased Professional and Technical Services				
322 Professional Educational Services – lus	5,628.96	5,628.95		11,257.91
340 Technical Services		11,410.84		11,410.84
Total Purchased Professional and Technical Services	\$5,628.96	\$17,039.79		\$22,668.75
500 Other Purchased Services				
530 Communications	2,134.16	2,399.50		4,533.66
580 Travel	1,316.84	1,316.82		2,633.66
Total Other Purchased Services	\$3,451.00	\$3,716.32		\$7,167.32
600 Supplies				
610 General Supplies	36,511.60	36,478.09		72,989.69
630 Food	414.50	414.48		828.98
640 Books and Periodicals	40,036.07	22,286.61		62,322.68
650 Supplies & Fees – Technology Related	9,985.14	9,985.12		19,970.26
Total Supplies	\$86,947.31	\$69,164.30		\$156,111.61
800 Other Objects				
810 Dues and Fees	1,024.50	1,024.50		2,049.00
Total Other Objects	\$1,024.50	\$1,024.50		\$2,049.00
Total 2260 Instruction and Curriculum Development Services	\$590,329.55	\$539,874.30	\$10,064.81	\$1,140,268.66

General Fund (10)

2270 Instructional Staff Professional Development Services

	<u>Elementary</u>	<u>Secondary</u>	<u>Federal</u>	<u>Total</u>
100 Personnel Services – Salaries				
100 Personnel Services – Salaries	14,232.81	14,762.34	42,039.47	71,034.62
Total Personnel Services – Salaries	\$14,232.81	\$14,762.34	\$42,039.47	\$71,034.62
200 Personnel Services – Employee Benefits				
220 Social Security Contributions	1,081.34	1,021.14	3,165.49	5,267.97
230 PSERS Retirement Contributions	4,740.08	4,916.38	14,053.31	23,709.77
240 Tuition Reimbursement	111,818.50	74,063.50	10,000.00	195,882.00
250 Unemployment Compensation	8.59	4.29	35.32	48.20
260 Workers' Compensation	108.80	103.31	294.46	506.57
Total Personnel Services – Employee Benefits	\$117,757.31	\$80,108.62	\$27,548.58	\$225,414.51
300 Purchased Professional and Technical Services				
322 Professional Educational Services – lus			580.00	580.00
329 Professional Educational Services – Other	82,329.08	57,148.95		139,478.03
360 Employee Training and Development Services	17,184.72	25,289.31	39,771.86	82,245.89
Total Purchased Professional and Technical Services	\$99,513.80	\$82,438.26	\$40,351.86	\$222,303.92
500 Other Purchased Services				
580 Travel	337.33	7,347.57	318.46	8,003.36
Total Other Purchased Services	\$337.33	\$7,347.57	\$318.46	\$8,003.36
600 Supplies				
610 General Supplies			111.80	111.80
640 Books and Periodicals	1,010.57	1,010.55	1,250.92	3,272.04
Total Supplies	\$1,010.57	\$1,010.55	\$1,362.72	\$3,383.84
Total 2270 Instructional Staff Professional Development Services	\$232,851.82	\$185,667.34	\$111,621.09	\$530,140.25

General Fund (10)

	<u>Elementary</u>	<u>Secondary</u>	<u>Federal</u>	<u>Total</u>
2290 Other Instructional Staff Services				
100 Personnel Services – Salaries				
100 Personnel Services – Salaries	62,754.54			62,754.54
Total Personnel Services – Salaries	\$62,754.54			\$62,754.54
200 Personnel Services – Employee Benefits				
220 Social Security Contributions	4,766.68			4,766.68
230 PSERS Retirement Contributions	20,872.48			20,872.48
250 Unemployment Compensation	252.67			252.67
260 Workers' Compensation	434.46			434.46
Total Personnel Services – Employee Benefits	\$26,326.29			\$26,326.29
Total 2290 Other Instructional Staff Services	\$89,080.83			\$89,080.83

General Fund (10)

	<u>Elementary</u>	<u>Secondary</u>	<u>Federal</u>	<u>Total</u>
2300 Support Services – Administration				
100 Personnel Services – Salaries				
100 Personnel Services – Salaries	888,163.42	890,863.39		2,136,296.48
Total Personnel Services – Salaries	\$888,163.42	\$890,863.39		\$2,136,296.48
200 Personnel Services – Employee Benefits				
210 Group Insurance – Contracted Provider	4,149.57	4,245.20		9,794.07
220 Social Security Contributions	66,570.96	64,505.38		151,849.93
230 PSERS Retirement Contributions	292,498.81	291,462.54		702,016.43
250 Unemployment Compensation	552.47	450.87		1,164.66
260 Workers' Compensation	6,153.74	6,162.02		14,871.02
270 Group Insurance – Self-Insurance	132,750.30	151,700.17		338,401.29
280 Other Post-Employment Benefits (OPEB)				52,450.66
292 Health Savings Accounts	24,000.00	24,750.00		57,750.00
299 All Other Employee Benefits				422.50
Total Personnel Services – Employee Benefits	\$526,675.85	\$543,276.18		\$1,328,720.56
300 Purchased Professional and Technical Services				
310 Official / Administrative Services				123,878.43
330 Other Professional Services				240,225.76
390 Other Purchased Professional and Technical Services	1,250.00			12,310.00
Total Purchased Professional and Technical Services	\$1,250.00			\$376,414.19
400 Purchased Property Services				
410 Cleaning Services	791.28	495.60		1,286.88
430 Repairs and Maintenance Services	2,742.50	4,245.32		6,987.82
440 Rentals		5,000.00		18,570.80
Total Purchased Property Services	\$3,533.78	\$9,740.92		\$26,845.50
500 Other Purchased Services				
520 Insurance – General				81,069.00
530 Communications	2,129.60	4,499.53		6,629.13
549 Other Advertising/Public Relations				1,666.18
580 Travel	532.40	2,300.62		6,019.25
599 Other Miscellaneous Purchased Services				638.18
Total Other Purchased Services	\$2,662.00	\$6,800.15		\$96,021.74
600 Supplies				
610 General Supplies	15,135.33	25,534.79		54,194.74
630 Food	1,755.00	3,613.26		10,192.40
640 Books and Periodicals	7,158.64	172.85		8,174.77
650 Supplies & Fees – Technology Related	100.00	847.50		947.50
Total Supplies	\$24,148.97	\$30,168.40		\$73,509.41
700 Property				
752 Capital Equipment – Original and Additional		12,720.00		12,720.00
Total Property		\$12,720.00		\$12,720.00
800 Other Objects				

General Fund (10)

2300 Support Services – Administration

800 Other Objects

	<u>Elementary</u>	<u>Secondary</u>	<u>Federal</u>	<u>Total</u>
810 Dues and Fees	4,409.00	3,168.00		31,032.00
820 Claims and Judgments Against the LEA				106,507.52
890 Miscellaneous Expenditures		200.00		200.00
Total Other Objects	\$4,409.00	\$3,368.00		\$137,739.52
Total 2300 Support Services – Administration	\$1,450,843.02	\$1,496,937.04		\$4,188,267.40

General Fund (10)

2310 Board Services

Elementary Secondary Federal Total

300 Purchased Professional and Technical Services

330	Other Professional Services		24,150.00
390	Other Purchased Professional and Technical Services		11,000.00

Total Purchased Professional and Technical Services **\$35,150.00**

500 Other Purchased Services

520	Insurance – General		81,069.00
549	Other Advertising/Public Relations		1,666.18
580	Travel		1,211.70

Total Other Purchased Services **\$83,946.88**

600 Supplies

610	General Supplies		1,682.34
630	Food		750.00
640	Books and Periodicals		843.28

Total Supplies **\$3,275.62**

800 Other Objects

810	Dues and Fees		15,025.00
820	Claims and Judgments Against the LEA		106,507.52

Total Other Objects **\$121,532.52**

Total 2310 Board Services **\$243,905.02**

General Fund (10)

2330 Tax Assessment and Collection Services

Elementary

Secondary

Federal

Total

300 Purchased Professional and Technical Services

310 Official / Administrative Services

123,878.43

330 Other Professional Services

425.00

Total Purchased Professional and Technical Services

\$124,303.43

Total 2330 Tax Assessment and Collection Services

\$124,303.43

General Fund (10)

2350 Legal and Accounting Services

Elementary

Secondary

Federal

Total

300 Purchased Professional and Technical Services

330 Other Professional Services

209,491.40

Total Purchased Professional and Technical Services

\$209,491.40

Total 2350 Legal and Accounting Services

\$209,491.40

General Fund (10)

2360 Office of the Superintendent / Executive Director Services

	<u>Elementary</u>	<u>Secondary</u>	<u>Federal</u>	<u>Total</u>
100 Personnel Services – Salaries				
100 Personnel Services – Salaries				357,269.67
Total Personnel Services – Salaries				\$357,269.67
200 Personnel Services – Employee Benefits				
210 Group Insurance – Contracted Provider				1,399.30
220 Social Security Contributions				20,773.59
230 PSERS Retirement Contributions				118,055.08
250 Unemployment Compensation				161.32
260 Workers' Compensation				2,555.26
270 Group Insurance – Self-Insurance				53,950.82
280 Other Post-Employment Benefits (OPEB)				52,450.66
292 Health Savings Accounts				9,000.00
299 All Other Employee Benefits				422.50
Total Personnel Services – Employee Benefits				\$258,768.53
300 Purchased Professional and Technical Services				
330 Other Professional Services				6,159.36
390 Other Purchased Professional and Technical Services				60.00
Total Purchased Professional and Technical Services				\$6,219.36
500 Other Purchased Services				
530 Communications	14.20	14.19		28.39
580 Travel				1,974.53
599 Other Miscellaneous Purchased Services				203.68
Total Other Purchased Services	\$14.20	\$14.19		\$2,206.60
600 Supplies				
610 General Supplies				2,260.74
630 Food				4,074.14
Total Supplies				\$6,334.88
800 Other Objects				
810 Dues and Fees				8,430.00
Total Other Objects				\$8,430.00
Total 2360 Office of the Superintendent / Executive Director Services	\$14.20	\$14.19		\$639,229.04

General Fund (10)

2380 Office of the Principal Services

	<u>Elementary</u>	<u>Secondary</u>	<u>Federal</u>	<u>Total</u>
100 Personnel Services – Salaries				
100 Personnel Services – Salaries	888,163.42	890,863.39		1,779,026.81
Total Personnel Services – Salaries	\$888,163.42	\$890,863.39		\$1,779,026.81
200 Personnel Services – Employee Benefits				
210 Group Insurance – Contracted Provider	4,149.57	4,245.20		8,394.77
220 Social Security Contributions	66,570.96	64,505.38		131,076.34
230 PSERS Retirement Contributions	292,498.81	291,462.54		583,961.35
250 Unemployment Compensation	552.47	450.87		1,003.34
260 Workers' Compensation	6,153.74	6,162.02		12,315.76
270 Group Insurance – Self-Insurance	132,750.30	151,700.17		284,450.47
292 Health Savings Accounts	24,000.00	24,750.00		48,750.00
Total Personnel Services – Employee Benefits	\$526,675.85	\$543,276.18		\$1,069,952.03
300 Purchased Professional and Technical Services				
390 Other Purchased Professional and Technical Services	1,250.00			1,250.00
Total Purchased Professional and Technical Services	\$1,250.00			\$1,250.00
400 Purchased Property Services				
410 Cleaning Services	791.28	495.60		1,286.88
430 Repairs and Maintenance Services	2,742.50	4,245.32		6,987.82
440 Rentals		5,000.00		5,000.00
Total Purchased Property Services	\$3,533.78	\$9,740.92		\$13,274.70
500 Other Purchased Services				
530 Communications	2,115.40	4,485.34		6,600.74
580 Travel	532.40	2,300.62		2,833.02
Total Other Purchased Services	\$2,647.80	\$6,785.96		\$9,433.76
600 Supplies				
610 General Supplies	15,135.33	25,534.79		40,670.12
630 Food	1,755.00	3,613.26		5,368.26
640 Books and Periodicals	7,158.64	172.85		7,331.49
650 Supplies & Fees – Technology Related	100.00	847.50		947.50
Total Supplies	\$24,148.97	\$30,168.40		\$54,317.37
700 Property				
752 Capital Equipment – Original and Additional		12,720.00		12,720.00
Total Property		\$12,720.00		\$12,720.00
800 Other Objects				
810 Dues and Fees	4,409.00	3,168.00		7,577.00
890 Miscellaneous Expenditures		200.00		200.00
Total Other Objects	\$4,409.00	\$3,368.00		\$7,777.00
Total 2380 Office of the Principal Services	\$1,450,828.82	\$1,496,922.85		\$2,947,751.67

LEA : 124150503 Avon Grove SD

Printed 11/21/2019 1:41:39 PM

General Fund (10)

	<u>Elementary</u>	<u>Secondary</u>	<u>Federal</u>	<u>Total</u>
2390 Other Administration Services				
400 <u>Purchased Property Services</u>				
440 Rentals				13,570.80
Total Purchased Property Services				\$13,570.80
500 <u>Other Purchased Services</u>				
599 Other Miscellaneous Purchased Services				434.50
Total Other Purchased Services				\$434.50
600 <u>Supplies</u>				
610 General Supplies				9,581.54
Total Supplies				\$9,581.54
Total 2390 Other Administration Services				\$23,586.84

General Fund (10)

	<u>Elementary</u>	<u>Secondary</u>	<u>Federal</u>	<u>Total</u>
2400 Support Services – Pupil Health				
100 Personnel Services – Salaries				
100 Personnel Services – Salaries				509,763.61
Total Personnel Services – Salaries				\$509,763.61
200 Personnel Services – Employee Benefits				
210 Group Insurance – Contracted Provider				1,570.49
220 Social Security Contributions				37,643.99
230 PSERS Retirement Contributions				169,628.92
250 Unemployment Compensation				483.81
260 Workers' Compensation				3,528.83
270 Group Insurance – Self-Insurance				107,437.42
292 Health Savings Accounts				18,000.00
Total Personnel Services – Employee Benefits				\$338,293.46
300 Purchased Professional and Technical Services				
329 Professional Educational Services – Other				32,872.98
330 Other Professional Services				5,887.50
Total Purchased Professional and Technical Services				\$38,760.48
400 Purchased Property Services				
430 Repairs and Maintenance Services				1,048.99
440 Rentals				1,772.37
Total Purchased Property Services				\$2,821.36
500 Other Purchased Services				
530 Communications				3,055.71
Total Other Purchased Services				\$3,055.71
600 Supplies				
610 General Supplies				20,680.89
650 Supplies & Fees – Technology Related				8,948.00
Total Supplies				\$29,628.89
Total 2400 Support Services – Pupil Health				\$922,323.51

LEA : 124150503 Avon Grove SD

Printed 11/21/2019 1:41:39 PM

General Fund (10)

2430 Dental Services

600 Supplies

610 General Supplies

Total Supplies

Total 2430 Dental Services

Elementary

Secondary

Federal

Total

1,052.58

\$1,052.58

\$1,052.58

General Fund (10)

2440 Nursing Services

	<u>Elementary</u>	<u>Secondary</u>	<u>Federal</u>	<u>Total</u>
100 Personnel Services – Salaries				
100 Personnel Services – Salaries				509,763.61
Total Personnel Services – Salaries				\$509,763.61
200 Personnel Services – Employee Benefits				
210 Group Insurance – Contracted Provider				1,570.49
220 Social Security Contributions				37,643.99
230 PSERS Retirement Contributions				169,628.92
250 Unemployment Compensation				483.81
260 Workers' Compensation				3,528.83
270 Group Insurance – Self-Insurance				107,437.42
292 Health Savings Accounts				18,000.00
Total Personnel Services – Employee Benefits				\$338,293.46
300 Purchased Professional and Technical Services				
329 Professional Educational Services – Other				32,872.98
330 Other Professional Services				5,887.50
Total Purchased Professional and Technical Services				\$38,760.48
400 Purchased Property Services				
430 Repairs and Maintenance Services				1,048.99
440 Rentals				1,772.37
Total Purchased Property Services				\$2,821.36
500 Other Purchased Services				
530 Communications				3,055.71
Total Other Purchased Services				\$3,055.71
600 Supplies				
610 General Supplies				19,628.31
650 Supplies & Fees – Technology Related				8,948.00
Total Supplies				\$28,576.31
Total 2440 Nursing Services				\$921,270.93

General Fund (10)

2500 Support Services – Business

Elementary Secondary Federal Total

100 Personnel Services – Salaries

100 Personnel Services – Salaries 481,108.81

Total Personnel Services – Salaries \$481,108.81

200 Personnel Services – Employee Benefits

210 Group Insurance – Contracted Provider 2,176.23

220 Social Security Contributions 33,631.51

230 PSERS Retirement Contributions 156,828.05

250 Unemployment Compensation 242.53

260 Workers' Compensation 3,330.55

270 Group Insurance – Self-Insurance 97,004.61

280 Other Post-Employment Benefits (OPEB) 12,514.81

292 Health Savings Accounts 16,500.00

Total Personnel Services – Employee Benefits \$322,228.29

300 Purchased Professional and Technical Services

330 Other Professional Services 15,799.15

Total Purchased Professional and Technical Services \$15,799.15

400 Purchased Property Services

410 Cleaning Services 1,335.96

440 Rentals 468.00

Total Purchased Property Services \$1,803.96

500 Other Purchased Services

530 Communications 6,821.19

550 Printing and Binding 544.68

580 Travel 1,577.14

Total Other Purchased Services \$8,943.01

600 Supplies

610 General Supplies 4,164.29

630 Food 142.90

650 Supplies & Fees – Technology Related 280.00

Total Supplies \$4,587.19

800 Other Objects

810 Dues and Fees 6,076.07

Total Other Objects \$6,076.07

Total 2500 Support Services – Business \$840,546.48

General Fund (10)

2510 Fiscal Services

Elementary Secondary Federal Total

100	<u>Personnel Services – Salaries</u>				
	100 Personnel Services – Salaries				481,108.81
Total Personnel Services – Salaries					\$481,108.81
200	<u>Personnel Services – Employee Benefits</u>				
	210 Group Insurance – Contracted Provider				2,176.23
	220 Social Security Contributions				33,631.51
	230 PSERS Retirement Contributions				156,828.05
	250 Unemployment Compensation				242.53
	260 Workers' Compensation				3,330.55
	270 Group Insurance – Self-Insurance				97,004.61
	280 Other Post-Employment Benefits (OPEB)				12,514.81
	292 Health Savings Accounts				16,500.00
Total Personnel Services – Employee Benefits					\$322,228.29
300	<u>Purchased Professional and Technical Services</u>				
	330 Other Professional Services				15,799.15
Total Purchased Professional and Technical Services					\$15,799.15
400	<u>Purchased Property Services</u>				
	410 Cleaning Services				1,335.96
	440 Rentals				468.00
Total Purchased Property Services					\$1,803.96
500	<u>Other Purchased Services</u>				
	530 Communications				6,821.19
	550 Printing and Binding				544.68
	580 Travel				1,577.14
Total Other Purchased Services					\$8,943.01
600	<u>Supplies</u>				
	610 General Supplies				4,164.29
	630 Food				142.90
	650 Supplies & Fees – Technology Related				280.00
Total Supplies					\$4,587.19
800	<u>Other Objects</u>				
	810 Dues and Fees				6,076.07
Total Other Objects					\$6,076.07
Total 2510 Fiscal Services					\$840,546.48

General Fund (10)

2511 Supervision of Fiscal Services - Head of Component

Elementary Secondary Federal Total

100 Personnel Services – Salaries				
100 Personnel Services – Salaries				235,179.10
Total Personnel Services – Salaries				\$235,179.10
200 Personnel Services – Employee Benefits				
210 Group Insurance – Contracted Provider				1,017.93
220 Social Security Contributions				15,213.77
230 PSERS Retirement Contributions				76,654.04
250 Unemployment Compensation				80.84
260 Workers' Compensation				1,628.12
270 Group Insurance – Self-Insurance				36,319.51
280 Other Post-Employment Benefits (OPEB)				12,514.81
292 Health Savings Accounts				6,000.00
Total Personnel Services – Employee Benefits				\$149,429.02
300 Purchased Professional and Technical Services				
330 Other Professional Services				15,799.15
Total Purchased Professional and Technical Services				\$15,799.15
400 Purchased Property Services				
410 Cleaning Services				1,335.96
440 Rentals				468.00
Total Purchased Property Services				\$1,803.96
500 Other Purchased Services				
530 Communications				6,821.19
550 Printing and Binding				544.68
580 Travel				1,577.14
Total Other Purchased Services				\$8,943.01
600 Supplies				
610 General Supplies				4,164.29
630 Food				142.90
650 Supplies & Fees – Technology Related				280.00
Total Supplies				\$4,587.19
800 Other Objects				
810 Dues and Fees				5,676.07
Total Other Objects				\$5,676.07
Total 2511 Supervision of Fiscal Services - Head of Component				\$421,417.50

General Fund (10)

2513 Receiving and Disbursing Funds Services

Elementary

Secondary

Federal

Total

100 Personnel Services – Salaries

100 Personnel Services – Salaries

41,163.20

Total Personnel Services – Salaries

\$41,163.20

200 Personnel Services – Employee Benefits

210 Group Insurance – Contracted Provider

173.18

220 Social Security Contributions

3,009.59

230 PSERS Retirement Contributions

13,708.67

250 Unemployment Compensation

40.43

260 Workers' Compensation

284.88

270 Group Insurance – Self-Insurance

19,051.09

292 Health Savings Accounts

3,000.00

Total Personnel Services – Employee Benefits

\$39,267.84

Total 2513 Receiving and Disbursing Funds Services

\$80,431.04

General Fund (10)

2514 Payroll Services

100 Personnel Services – Salaries

100 Personnel Services – Salaries

Elementary

Secondary

Federal

Total

52,938.86

Total Personnel Services – Salaries

\$52,938.86

200 Personnel Services – Employee Benefits

210 Group Insurance – Contracted Provider

210.23

220 Social Security Contributions

3,957.49

230 PSERS Retirement Contributions

17,630.41

250 Unemployment Compensation

40.42

260 Workers' Compensation

366.46

270 Group Insurance – Self-Insurance

18,135.75

292 Health Savings Accounts

3,000.00

Total Personnel Services – Employee Benefits

\$43,340.76

Total 2514 Payroll Services

\$96,279.62

General Fund (10)

2515 Financial Accounting Services

Elementary

Secondary

Federal

Total

100 Personnel Services – Salaries

100 Personnel Services – Salaries

151,827.65

Total Personnel Services – Salaries

\$151,827.65

200 Personnel Services – Employee Benefits

210 Group Insurance – Contracted Provider

774.89

220 Social Security Contributions

11,450.66

230 PSERS Retirement Contributions

48,834.93

250 Unemployment Compensation

80.84

260 Workers' Compensation

1,051.09

270 Group Insurance – Self-Insurance

23,498.26

292 Health Savings Accounts

4,500.00

Total Personnel Services – Employee Benefits

\$90,190.67

800 Other Objects

810 Dues and Fees

400.00

Total Other Objects

\$400.00

Total 2515 Financial Accounting Services

\$242,418.32

General Fund (10)

2600 Operation and Maintenance of Plant Services

Elementary Secondary Federal Total

100	<u>Personnel Services – Salaries</u>			
100	Personnel Services – Salaries			409,973.05
Total Personnel Services – Salaries				\$409,973.05
200	<u>Personnel Services – Employee Benefits</u>			
210	Group Insurance – Contracted Provider			1,548.58
220	Social Security Contributions			30,643.31
230	PSERS Retirement Contributions			136,179.84
250	Unemployment Compensation			337.79
260	Workers' Compensation			2,838.33
270	Group Insurance – Self-Insurance			132,587.34
280	Other Post-Employment Benefits (OPEB)			12,514.81
292	Health Savings Accounts			23,500.00
Total Personnel Services – Employee Benefits				\$340,150.00
300	<u>Purchased Professional and Technical Services</u>			
330	Other Professional Services			6,325.77
340	Technical Services			3,458.00
350	Security / Safety Services			72,264.75
Total Purchased Professional and Technical Services				\$82,048.52
400	<u>Purchased Property Services</u>			
410	Cleaning Services			1,115,511.48
420	Utility Services			180,455.89
430	Repairs and Maintenance Services			258,877.91
440	Rentals			240,546.28
460	Extermination Services			9,240.00
490	Other Purchased Property Services			125.00
Total Purchased Property Services				\$1,804,756.56
500	<u>Other Purchased Services</u>			
521	Fire Insurance			139,157.00
522	Automotive Liability Insurance			9,712.00
523	General Property and Liability Insurance			28,727.00
530	Communications			5,634.44
580	Travel			824.30
596	Direct Payments To Intermediate Units			126,000.00
Total Other Purchased Services				\$310,054.74
600	<u>Supplies</u>			
610	General Supplies	106,703.38	106,703.31	213,406.69
620	Energy			712,202.58
650	Supplies & Fees – Technology Related			19,214.29
Total Supplies		\$106,703.38	\$106,703.31	\$944,823.56
700	<u>Property</u>			
752	Capital Equipment – Original and Additional			10,589.80
Total Property				\$10,589.80

LEA : 124150503 Avon Grove SD

Printed 11/21/2019 1:41:39 PM

General Fund (10)

2600 Operation and Maintenance of Plant Services

Elementary

Secondary

Federal

Total

800 Other Objects

810 Dues and Fees

2,312.16

820 Claims and Judgments Against the LEA

154.22

Total Other Objects

\$2,466.38

Total 2600 Operation and Maintenance of Plant Services

\$106,703.38

\$106,703.31

\$3,904,862.61

General Fund (10)

2610 Supervision of Operation and Maintenance of Plant Services

Elementary Secondary Federal Total

100 Personnel Services – Salaries				
100 Personnel Services – Salaries				378,798.81
Total Personnel Services – Salaries				\$378,798.81
200 Personnel Services – Employee Benefits				
210 Group Insurance – Contracted Provider				1,423.00
220 Social Security Contributions				28,281.60
230 PSERS Retirement Contributions				125,797.72
250 Unemployment Compensation				300.31
260 Workers' Compensation				2,622.50
270 Group Insurance – Self-Insurance				117,791.14
280 Other Post-Employment Benefits (OPEB)				12,514.81
292 Health Savings Accounts				20,500.00
Total Personnel Services – Employee Benefits				\$309,231.08
300 Purchased Professional and Technical Services				
330 Other Professional Services				6,325.77
340 Technical Services				3,458.00
Total Purchased Professional and Technical Services				\$9,783.77
500 Other Purchased Services				
521 Fire Insurance				139,157.00
523 General Property and Liability Insurance				28,727.00
530 Communications				5,634.44
580 Travel				824.30
596 Direct Payments To Intermediate Units				126,000.00
Total Other Purchased Services				\$300,342.74
600 Supplies				
610 General Supplies	1,253.70	1,253.70		2,507.40
650 Supplies & Fees – Technology Related				9,175.79
Total Supplies	\$1,253.70	\$1,253.70		\$11,683.19
800 Other Objects				
810 Dues and Fees				165.00
Total Other Objects				\$165.00
Total 2610 Supervision of Operation and Maintenance of Plant Services	\$1,253.70	\$1,253.70		\$1,010,004.59

General Fund (10)

2611 Supervision of Operation and Maintenance of Plant Services – Head of Component

Elementary

Secondary

Federal

Total

500 Other Purchased Services

596 Direct Payments To Intermediate Units

126,000.00

Total Other Purchased Services				\$126,000.00
Total 2611 Supervision of Operation and Maintenance of Plant Services – Head of Component				\$126,000.00

General Fund (10)

2619 Supervision of Operation and Maintenance of Plant Services – All Other Supervision

Elementary

Secondary

Federal

Total

100 Personnel Services – Salaries				
100 Personnel Services – Salaries				378,798.81
Total Personnel Services – Salaries				\$378,798.81
200 Personnel Services – Employee Benefits				
210 Group Insurance – Contracted Provider				1,423.00
220 Social Security Contributions				28,281.60
230 PSERS Retirement Contributions				125,797.72
250 Unemployment Compensation				300.31
260 Workers' Compensation				2,622.50
270 Group Insurance – Self-Insurance				117,791.14
280 Other Post-Employment Benefits (OPEB)				12,514.81
292 Health Savings Accounts				20,500.00
Total Personnel Services – Employee Benefits				\$309,231.08
300 Purchased Professional and Technical Services				
330 Other Professional Services				6,325.77
340 Technical Services				3,458.00
Total Purchased Professional and Technical Services				\$9,783.77
500 Other Purchased Services				
521 Fire Insurance				139,157.00
523 General Property and Liability Insurance				28,727.00
530 Communications				5,634.44
580 Travel				824.30
Total Other Purchased Services				\$174,342.74
600 Supplies				
610 General Supplies	1,253.70	1,253.70		2,507.40
650 Supplies & Fees – Technology Related				9,175.79
Total Supplies	\$1,253.70	\$1,253.70		\$11,683.19
800 Other Objects				
810 Dues and Fees				165.00
Total Other Objects				\$165.00
Total 2619 Supervision of Operation and Maintenance of Plant Services – All Other Supervision	\$1,253.70	\$1,253.70		\$884,004.59

General Fund (10)

	<u>Elementary</u>	<u>Secondary</u>	<u>Federal</u>	<u>Total</u>
2620 Operation of Buildings Services				
400 <u>Purchased Property Services</u>				
410 Cleaning Services				1,047,685.69
420 Utility Services				71,881.39
430 Repairs and Maintenance Services				194,164.98
440 Rentals				240,412.08
460 Extermination Services				9,240.00
Total Purchased Property Services				\$1,563,384.14
600 <u>Supplies</u>				
610 General Supplies	81,588.25	81,588.20		163,176.45
620 Energy				708,829.52
Total Supplies	\$81,588.25	\$81,588.20		\$872,005.97
800 <u>Other Objects</u>				
810 Dues and Fees				2,147.16
Total Other Objects				\$2,147.16
Total 2620 Operation of Buildings Services	\$81,588.25	\$81,588.20		\$2,437,537.27

General Fund (10)

2630 Care and Upkeep of Grounds Services

Elementary

Secondary

Federal

Total

400 Purchased Property Services

410 Cleaning Services

67,825.79

430 Repairs and Maintenance Services

43,722.87

490 Other Purchased Property Services

125.00

Total Purchased Property Services

\$111,673.66

600 Supplies

610 General Supplies

9,726.16

9,726.16

19,452.32

Total Supplies

\$9,726.16

\$9,726.16

\$19,452.32

Total 2630 Care and Upkeep of Grounds Services

\$9,726.16

\$9,726.16

\$131,125.98

General Fund (10)

	<u>Elementary</u>	<u>Secondary</u>	<u>Federal</u>	<u>Total</u>
2640 Care and Upkeep of Equipment Services				
400 <u>Purchased Property Services</u>				
430 Repairs and Maintenance Services				1,777.00
440 Rentals				134.20
Total Purchased Property Services				\$1,911.20
600 <u>Supplies</u>				
610 General Supplies	4,158.59	4,158.58		8,317.17
Total Supplies	\$4,158.59	\$4,158.58		\$8,317.17
Total 2640 Care and Upkeep of Equipment Services	\$4,158.59	\$4,158.58		\$10,228.37

General Fund (10)

	<u>Elementary</u>	<u>Secondary</u>	<u>Federal</u>	<u>Total</u>
2650 Vehicle Operation and Maintenance Services (Other Than Student Transportation Vehicles)				
400 <u>Purchased Property Services</u>				
430 Repairs and Maintenance Services				1,251.37
Total Purchased Property Services				\$1,251.37
500 <u>Other Purchased Services</u>				
522 Automotive Liability Insurance				9,712.00
Total Other Purchased Services				\$9,712.00
600 <u>Supplies</u>				
610 General Supplies	731.79	731.79		1,463.58
620 Energy				3,373.06
Total Supplies	\$731.79	\$731.79		\$4,836.64
Total 2650 Vehicle Operation and Maintenance Services (Other Than Student Transportation Vehicles)	\$731.79	\$731.79		\$15,800.01

General Fund (10)

2660 Safety and Security Services

100 Personnel Services – Salaries

	<u>Elementary</u>	<u>Secondary</u>	<u>Federal</u>	<u>Total</u>
100 Personnel Services – Salaries				31,174.24
Total Personnel Services – Salaries				\$31,174.24

200 Personnel Services – Employee Benefits

210 Group Insurance – Contracted Provider				125.58
220 Social Security Contributions				2,361.71
230 PSERS Retirement Contributions				10,382.12
250 Unemployment Compensation				37.48
260 Workers' Compensation				215.83
270 Group Insurance – Self-Insurance				14,796.20
292 Health Savings Accounts				3,000.00
Total Personnel Services – Employee Benefits				\$30,918.92

300 Purchased Professional and Technical Services

350 Security / Safety Services				72,264.75
Total Purchased Professional and Technical Services				\$72,264.75

400 Purchased Property Services

430 Repairs and Maintenance Services				17,961.69
Total Purchased Property Services				\$17,961.69

600 Supplies

610 General Supplies	9,244.89	9,244.88		18,489.77
650 Supplies & Fees – Technology Related				10,038.50
Total Supplies	\$9,244.89	\$9,244.88		\$28,528.27

700 Property

752 Capital Equipment – Original and Additional				10,589.80
Total Property				\$10,589.80

800 Other Objects

820 Claims and Judgments Against the LEA				154.22
Total Other Objects				\$154.22

Total 2660 Safety and Security Services

	\$9,244.89	\$9,244.88		\$191,591.89
--	-------------------	-------------------	--	---------------------

General Fund (10)

	<u>Elementary</u>	<u>Secondary</u>	<u>Federal</u>	<u>Total</u>
2690 Other Operation and Maintenance of Plant Services				
400 <u>Purchased Property Services</u>				
420 Utility Services				108,574.50
Total Purchased Property Services				\$108,574.50
Total 2690 Other Operation and Maintenance of Plant Services				\$108,574.50

General Fund (10)

	<u>Elementary</u>	<u>Secondary</u>	<u>Federal</u>	<u>Total</u>
2700 Student Transportation Services				
100 Personnel Services – Salaries				
100 Personnel Services – Salaries				71,043.70
Total Personnel Services – Salaries				\$71,043.70
200 Personnel Services – Employee Benefits				
210 Group Insurance – Contracted Provider				197.76
220 Social Security Contributions				5,302.24
230 PSERS Retirement Contributions				23,659.94
250 Unemployment Compensation				108.77
260 Workers' Compensation				491.88
270 Group Insurance – Self-Insurance				6,802.00
292 Health Savings Accounts				1,500.00
Total Personnel Services – Employee Benefits				\$38,062.59
400 Purchased Property Services				
430 Repairs and Maintenance Services				1,035.00
Total Purchased Property Services				\$1,035.00
500 Other Purchased Services				
511 Student Transportation Services from Another LEA Within the State				17,950.00
513 Contracted Carriers			1,600.00	6,031,148.70
516 Student Transportation Services From the IU				7,820.87
530 Communications				1,320.00
Total Other Purchased Services			\$1,600.00	\$6,058,239.57
600 Supplies				
610 General Supplies				1,124.58
630 Food				300.00
650 Supplies & Fees – Technology Related				7,179.66
Total Supplies				\$8,604.24
Total 2700 Student Transportation Services			\$1,600.00	\$6,176,985.10

General Fund (10)

2710 Supervision of Student Transportation Services

Elementary

Secondary

Federal

Total

100 Personnel Services – Salaries

100 Personnel Services – Salaries

71,043.70

Total Personnel Services – Salaries

\$71,043.70

200 Personnel Services – Employee Benefits

210 Group Insurance – Contracted Provider

197.76

220 Social Security Contributions

5,302.24

230 PSERS Retirement Contributions

23,659.94

250 Unemployment Compensation

108.77

260 Workers' Compensation

491.88

270 Group Insurance – Self-Insurance

6,802.00

292 Health Savings Accounts

1,500.00

Total Personnel Services – Employee Benefits

\$38,062.59

500 Other Purchased Services

530 Communications

1,320.00

Total Other Purchased Services

\$1,320.00

600 Supplies

610 General Supplies

607.63

650 Supplies & Fees – Technology Related

7,179.66

Total Supplies

\$7,787.29

Total 2710 Supervision of Student Transportation Services

\$118,213.58

General Fund (10)

	<u>Elementary</u>	<u>Secondary</u>	<u>Federal</u>	<u>Total</u>
2711 Supervision of Student Transportation Services – Head of Component				
100 Personnel Services – Salaries				
100 Personnel Services – Salaries				71,043.70
Total Personnel Services – Salaries				\$71,043.70
200 Personnel Services – Employee Benefits				
210 Group Insurance – Contracted Provider				197.76
220 Social Security Contributions				5,302.24
230 PSERS Retirement Contributions				23,659.94
250 Unemployment Compensation				108.77
260 Workers' Compensation				491.88
270 Group Insurance – Self-Insurance				6,802.00
292 Health Savings Accounts				1,500.00
Total Personnel Services – Employee Benefits				\$38,062.59
500 Other Purchased Services				
530 Communications				1,320.00
Total Other Purchased Services				\$1,320.00
600 Supplies				
610 General Supplies				607.63
650 Supplies & Fees – Technology Related				7,179.66
Total Supplies				\$7,787.29
Total 2711 Supervision of Student Transportation Services – Head of Component				\$118,213.58

General Fund (10)

2720 Vehicle Operation Services

Elementary

Secondary

Federal

Total

500 Other Purchased Services

513 Contracted Carriers

5,303,915.67

516 Student Transportation Services From the IU

7,820.87

Total Other Purchased Services

\$5,311,736.54

600 Supplies

610 General Supplies

137.83

630 Food

300.00

Total Supplies

\$437.83

Total 2720 Vehicle Operation Services

\$5,312,174.37

General Fund (10)

2730 Monitoring Services

Elementary

Secondary

Federal

Total

500 Other Purchased Services

513 Contracted Carriers

1,600.00

163,134.96

Total Other Purchased Services

\$1,600.00

\$163,134.96

Total 2730 Monitoring Services

\$1,600.00

\$163,134.96

General Fund (10)

	<u>Elementary</u>	<u>Secondary</u>	<u>Federal</u>	<u>Total</u>
2740 Vehicle Servicing and Maintenance Services				
400 <u>Purchased Property Services</u>				
430 Repairs and Maintenance Services				1,035.00
Total Purchased Property Services				\$1,035.00
600 <u>Supplies</u>				
610 General Supplies				379.12
Total Supplies				\$379.12
Total 2740 Vehicle Servicing and Maintenance Services				\$1,414.12

LEA : 124150503 Avon Grove SD

Printed 11/21/2019 1:41:39 PM

General Fund (10)

2750 Nonpublic Transportation

Elementary

Secondary

Federal

Total

500 Other Purchased Services

511 Student Transportation Services from Another LEA Within the State

17,950.00

513 Contracted Carriers

564,098.07

Total Other Purchased Services

\$582,048.07

Total 2750 Nonpublic Transportation

\$582,048.07

General Fund (10)

2800 Support Services – Central

Elementary Secondary Federal Total

100	<u>Personnel Services – Salaries</u>			
	100 Personnel Services – Salaries			679,752.99
Total Personnel Services – Salaries				\$679,752.99
200	<u>Personnel Services – Employee Benefits</u>			
	210 Group Insurance – Contracted Provider			3,128.95
	220 Social Security Contributions			47,763.93
	230 PSERS Retirement Contributions			215,957.13
	240 Tuition Reimbursement			51,986.98
	250 Unemployment Compensation			496.84
	260 Workers' Compensation			4,705.83
	270 Group Insurance – Self-Insurance			163,589.33
	292 Health Savings Accounts			32,500.00
Total Personnel Services – Employee Benefits				\$520,128.99
300	<u>Purchased Professional and Technical Services</u>			
	330 Other Professional Services			131,724.98
	340 Technical Services			112,433.03
	360 Employee Training and Development Services		6,500.00	34,188.08
Total Purchased Professional and Technical Services				\$6,500.00 \$278,346.09
400	<u>Purchased Property Services</u>			
	430 Repairs and Maintenance Services			415.00
	440 Rentals			6,766.81
Total Purchased Property Services				\$7,181.81
500	<u>Other Purchased Services</u>			
	530 Communications			42,425.00
	549 Other Advertising/Public Relations			600.00
	550 Printing and Binding			2,711.30
	580 Travel			10,482.00
	596 Direct Payments To Intermediate Units			107,766.61
Total Other Purchased Services				\$163,984.91
600	<u>Supplies</u>			
	610 General Supplies			10,443.61
	640 Books and Periodicals			331.52
	650 Supplies & Fees – Technology Related			238,919.55
Total Supplies				\$249,694.68
700	<u>Property</u>			
	756 Capitalized Technology Equipment – Original			800,578.25
	766 Capitalized Technology Equipment – Replacement			43,075.63
Total Property				\$843,653.88
800	<u>Other Objects</u>			
	810 Dues and Fees			768.00
Total Other Objects				\$768.00
Total 2800 Support Services – Central				\$6,500.00 \$2,743,511.35

General Fund (10)

2810 Planning, Research, Development and Evaluation Services

Elementary

Secondary

Federal

Total

100 Personnel Services – Salaries

100 Personnel Services – Salaries

462,068.35

Total Personnel Services – Salaries

\$462,068.35

200 Personnel Services – Employee Benefits

210 Group Insurance – Contracted Provider

2,019.20

220 Social Security Contributions

33,126.41

230 PSERS Retirement Contributions

145,311.87

250 Unemployment Compensation

397.69

260 Workers' Compensation

3,198.45

270 Group Insurance – Self-Insurance

125,255.67

292 Health Savings Accounts

26,250.00

Total Personnel Services – Employee Benefits

\$335,559.29

300 Purchased Professional and Technical Services

330 Other Professional Services

124,572.98

340 Technical Services

64,297.64

Total Purchased Professional and Technical Services

\$188,870.62

400 Purchased Property Services

430 Repairs and Maintenance Services

415.00

Total Purchased Property Services

\$415.00

500 Other Purchased Services

530 Communications

36,493.37

580 Travel

1,345.39

Total Other Purchased Services

\$37,838.76

600 Supplies

610 General Supplies

6,423.04

650 Supplies & Fees – Technology Related

228,596.03

Total Supplies

\$235,019.07

700 Property

756 Capitalized Technology Equipment – Original

800,578.25

766 Capitalized Technology Equipment – Replacement

43,075.63

Total Property

\$843,653.88

Total 2810 Planning, Research, Development and Evaluation Services

\$2,103,424.97

General Fund (10)

2820 Information Services

Elementary

Secondary

Federal

Total

300 Purchased Professional and Technical Services

330 Other Professional Services

4,152.00

Total Purchased Professional and Technical Services

\$4,152.00

500 Other Purchased Services

530 Communications

5,908.86

549 Other Advertising/Public Relations

600.00

550 Printing and Binding

2,711.30

596 Direct Payments To Intermediate Units

107,766.61

Total Other Purchased Services

\$116,986.77

600 Supplies

610 General Supplies

25.97

Total Supplies

\$25.97

Total 2820 Information Services

\$121,164.74

General Fund (10)

2823 Public Information Services

Elementary

Secondary

Federal

Total

300 Purchased Professional and Technical Services

330 Other Professional Services

4,152.00

Total Purchased Professional and Technical Services

\$4,152.00

500 Other Purchased Services

530 Communications

5,908.86

549 Other Advertising/Public Relations

600.00

550 Printing and Binding

2,711.30

596 Direct Payments To Intermediate Units

107,766.61

Total Other Purchased Services

\$116,986.77

600 Supplies

610 General Supplies

25.97

Total Supplies

\$25.97

Total 2823 Public Information Services

\$121,164.74

General Fund (10)

2830 Staff Services

	<u>Elementary</u>	<u>Secondary</u>	<u>Federal</u>	<u>Total</u>
100 Personnel Services – Salaries				
100 Personnel Services – Salaries				217,684.64
Total Personnel Services – Salaries				\$217,684.64
200 Personnel Services – Employee Benefits				
210 Group Insurance – Contracted Provider				1,109.75
220 Social Security Contributions				14,637.52
230 PSERS Retirement Contributions				70,645.26
240 Tuition Reimbursement				51,986.98
250 Unemployment Compensation				99.15
260 Workers' Compensation				1,507.38
270 Group Insurance – Self-Insurance				38,333.66
292 Health Savings Accounts				6,250.00
Total Personnel Services – Employee Benefits				\$184,569.70
300 Purchased Professional and Technical Services				
330 Other Professional Services				3,000.00
340 Technical Services				999.00
360 Employee Training and Development Services			6,500.00	34,188.08
Total Purchased Professional and Technical Services			\$6,500.00	\$38,187.08
500 Other Purchased Services				
530 Communications				22.77
580 Travel				9,136.61
Total Other Purchased Services				\$9,159.38
600 Supplies				
610 General Supplies				2,687.43
640 Books and Periodicals				331.52
650 Supplies & Fees – Technology Related				10,323.52
Total Supplies				\$13,342.47
800 Other Objects				
810 Dues and Fees				768.00
Total Other Objects				\$768.00
Total 2830 Staff Services			\$6,500.00	\$463,711.27

General Fund (10)

2831 Supervision of Staff Services

Elementary

Secondary

Federal

Total

100 Personnel Services – Salaries

100 Personnel Services – Salaries

217,144.64

Total Personnel Services – Salaries

\$217,144.64

200 Personnel Services – Employee Benefits

210 Group Insurance – Contracted Provider

1,109.75

220 Social Security Contributions

14,596.21

230 PSERS Retirement Contributions

70,464.74

250 Unemployment Compensation

99.15

260 Workers' Compensation

1,503.33

270 Group Insurance – Self-Insurance

38,333.66

292 Health Savings Accounts

6,250.00

Total Personnel Services – Employee Benefits

\$132,356.84

300 Purchased Professional and Technical Services

330 Other Professional Services

3,000.00

340 Technical Services

999.00

Total Purchased Professional and Technical Services

\$3,999.00

500 Other Purchased Services

530 Communications

22.77

580 Travel

58.00

Total Other Purchased Services

\$80.77

600 Supplies

610 General Supplies

2,687.43

650 Supplies & Fees – Technology Related

10,323.52

Total Supplies

\$13,010.95

800 Other Objects

810 Dues and Fees

768.00

Total Other Objects

\$768.00

Total 2831 Supervision of Staff Services

\$367,360.20

General Fund (10)

2834 Staff Development Services – Non-Instructional, Certified Staff Only	<u>Elementary</u>	<u>Secondary</u>	<u>Federal</u>	<u>Total</u>
100 Personnel Services – Salaries				
100 Personnel Services – Salaries				540.00
Total Personnel Services – Salaries				\$540.00
200 Personnel Services – Employee Benefits				
220 Social Security Contributions				41.31
230 PSERS Retirement Contributions				180.52
240 Tuition Reimbursement				51,986.98
260 Workers' Compensation				4.05
Total Personnel Services – Employee Benefits				\$52,212.86
300 Purchased Professional and Technical Services				
360 Employee Training and Development Services			6,500.00	32,863.08
Total Purchased Professional and Technical Services			\$6,500.00	\$32,863.08
500 Other Purchased Services				
580 Travel				9,078.61
Total Other Purchased Services				\$9,078.61
600 Supplies				
640 Books and Periodicals				82.74
Total Supplies				\$82.74
Total 2834 Staff Development Services – Non-Instructional, Certified Staff Only			\$6,500.00	\$94,777.29

General Fund (10)

	<u>Elementary</u>	<u>Secondary</u>	<u>Federal</u>	<u>Total</u>
2836 Staff Development Services – Non-Instructional, Non-Certified Staff Only				
300 <u>Purchased Professional and Technical Services</u>				
360 Employee Training and Development Services				1,325.00
Total Purchased Professional and Technical Services				\$1,325.00
600 <u>Supplies</u>				
640 Books and Periodicals				248.78
Total Supplies				\$248.78
Total 2836 Staff Development Services – Non-Instructional, Non-Certified Staff Only				\$1,573.78

General Fund (10)

2840 Data Processing Services

Elementary

Secondary

Federal

Total

300 Purchased Professional and Technical Services

340 Technical Services

47,136.39

Total Purchased Professional and Technical Services

\$47,136.39

400 Purchased Property Services

440 Rentals

6,766.81

Total Purchased Property Services

\$6,766.81

600 Supplies

610 General Supplies

1,307.17

Total Supplies

\$1,307.17

Total 2840 Data Processing Services

\$55,210.37

General Fund (10)

	<u>Elementary</u>	<u>Secondary</u>	<u>Federal</u>	<u>Total</u>
2900 Other Support Services				
500 Other Purchased Services				
595 IU Payments By Withholding				31,541.74
Total Other Purchased Services				\$31,541.74
800 Other Objects				
890 Miscellaneous Expenditures				1,410.86
899 Pass-Through Funds				184,784.15
Total Other Objects				\$186,195.01
Total 2900 Other Support Services				\$217,736.75

General Fund (10)

2910 Support Services Not Listed Elsewhere In the 2000 Series

Elementary

Secondary

Federal

Total

500 Other Purchased Services

595 IU Payments By Withholding

31,541.74

Total Other Purchased Services

\$31,541.74

800 Other Objects

890 Miscellaneous Expenditures

1,410.86

Total Other Objects

\$1,410.86

Total 2910 Support Services Not Listed Elsewhere In the 2000 Series

\$32,952.60

General Fund (10)

2990 Pass-Through Funds

Elementary

Secondary

Federal

Total

800 Other Objects

899 Pass-Through Funds

184,784.15

Total Other Objects

\$184,784.15

Total 2990 Pass-Through Funds

\$184,784.15

General Fund (10)

3000 Operation of Non-Instructional Services

Total

100 Personnel Services – Salaries

100 Personnel Services – Salaries 607,835.27

Total Personnel Services – Salaries \$607,835.27

200 Personnel Services – Employee Benefits

220 Social Security Contributions 45,991.28

230 PSERS Retirement Contributions 189,134.35

250 Unemployment Compensation 1,222.93

260 Workers' Compensation 4,204.20

Total Personnel Services – Employee Benefits \$240,552.76

300 Purchased Professional and Technical Services

330 Other Professional Services 98,272.50

390 Other Purchased Professional and Technical Services 1,920.00

Total Purchased Professional and Technical Services \$100,192.50

400 Purchased Property Services

430 Repairs and Maintenance Services 21,672.22

440 Rentals 7,282.21

Total Purchased Property Services \$28,954.43

500 Other Purchased Services

510 Student Transportation Services 110,232.99

520 Insurance – General 13,578.00

530 Communications 1,497.67

580 Travel 10,369.35

591 Services Purchased Locally 34,659.06

Total Other Purchased Services \$170,337.07

600 Supplies

610 General Supplies 115,997.08

630 Food 621.59

650 Supplies & Fees – Technology Related 4,821.35

Total Supplies \$121,440.02

800 Other Objects

810 Dues and Fees 21,973.20

890 Miscellaneous Expenditures 13,994.19

Total Other Objects \$35,967.39

Total 3000 Operation of Non-Instructional Services \$1,305,279.44

General Fund (10)

3200 Student Activities

Elementary

Secondary

Federal

Total

100 Personnel Services – Salaries

100 Personnel Services – Salaries

606,565.27

Total Personnel Services – Salaries

\$606,565.27

200 Personnel Services – Employee Benefits

220 Social Security Contributions

45,894.48

230 PSERS Retirement Contributions

189,134.35

250 Unemployment Compensation

1,219.03

260 Workers' Compensation

4,196.92

Total Personnel Services – Employee Benefits

\$240,444.78

300 Purchased Professional and Technical Services

330 Other Professional Services

98,272.50

390 Other Purchased Professional and Technical Services

1,595.00

Total Purchased Professional and Technical Services

\$99,867.50

400 Purchased Property Services

430 Repairs and Maintenance Services

21,672.22

440 Rentals

7,282.21

Total Purchased Property Services

\$28,954.43

500 Other Purchased Services

510 Student Transportation Services

110,232.99

520 Insurance – General

13,578.00

530 Communications

1,497.67

580 Travel

10,369.35

Total Other Purchased Services

\$135,678.01

600 Supplies

610 General Supplies

115,997.08

630 Food

621.59

650 Supplies & Fees – Technology Related

4,821.35

Total Supplies

\$121,440.02

800 Other Objects

810 Dues and Fees

21,973.20

890 Miscellaneous Expenditures

370.90

Total Other Objects

\$22,344.10

Total 3200 Student Activities

\$1,255,294.11

General Fund (10)

3300 Community Services

100 Personnel Services – Salaries

	<u>Elementary</u>	<u>Secondary</u>	<u>Federal</u>	<u>Total</u>
100 Personnel Services – Salaries				1,270.00

Total Personnel Services – Salaries				\$1,270.00
--	--	--	--	-------------------

200 Personnel Services – Employee Benefits

220 Social Security Contributions				96.80
-----------------------------------	--	--	--	-------

250 Unemployment Compensation				3.90
-------------------------------	--	--	--	------

260 Workers' Compensation				7.28
---------------------------	--	--	--	------

Total Personnel Services – Employee Benefits				\$107.98
---	--	--	--	-----------------

300 Purchased Professional and Technical Services

390 Other Purchased Professional and Technical Services			325.00	325.00
---	--	--	--------	--------

Total Purchased Professional and Technical Services			\$325.00	\$325.00
--	--	--	-----------------	-----------------

500 Other Purchased Services

591 Services Purchased Locally				34,659.06
--------------------------------	--	--	--	-----------

Total Other Purchased Services				\$34,659.06
---------------------------------------	--	--	--	--------------------

Total 3300 Community Services			\$325.00	\$36,362.04
--------------------------------------	--	--	-----------------	--------------------

LEA : 124150503 Avon Grove SD

Printed 11/21/2019 1:41:54 PM

General Fund (10)

3400 Scholarships and Awards

Elementary

Secondary

Federal

Total

800 Other Objects

890 Miscellaneous Expenditures

13,623.29

Total Other Objects

\$13,623.29

Total 3400 Scholarships and Awards

\$13,623.29

General Fund (10)

5000 Other Expenditures and Financing Uses

Total

800 Other Objects

830 Interest	1,015,309.46
880 Refunds of Prior Years' Receipts	381.37

Total Other Objects	\$1,015,690.83
----------------------------	-----------------------

900 Other Uses of Funds

910 Redemption of Principal	2,915,000.00
939 Other Fund Transfers	1,851,175.40

Total Other Uses of Funds	\$4,766,175.40
----------------------------------	-----------------------

Total 5000 Other Expenditures and Financing Uses	\$5,781,866.23
---	-----------------------

General Fund (10)

5100 Debt Service / Other Expenditures and Financing Uses	<u>Elementary</u>	<u>Secondary</u>	<u>Federal</u>	<u>Total</u>
800 Other Objects				
830 Interest				1,015,309.46
880 Refunds of Prior Years' Receipts				381.37
Total Other Objects				\$1,015,690.83
900 Other Uses of Funds				
910 Redemption of Principal				2,915,000.00
Total Other Uses of Funds				\$2,915,000.00
Total 5100 Debt Service / Other Expenditures and Financing Uses				\$3,930,690.83

General Fund (10)

5110 Debt Service

Elementary

Secondary

Federal

Total

800 Other Objects

830 Interest

1,015,309.46

Total Other Objects

\$1,015,309.46

900 Other Uses of Funds

910 Redemption of Principal

2,915,000.00

Total Other Uses of Funds

\$2,915,000.00

Total 5110 Debt Service

\$3,930,309.46

General Fund (10)

5130 Refund of Prior Year Revenues / Receipts

Elementary

Secondary

Federal

Total

800 Other Objects

880 Refunds of Prior Years' Receipts

381.37

Total Other Objects

\$381.37

Total 5130 Refund of Prior Year Revenues / Receipts

\$381.37

General Fund (10)

	<u>Elementary</u>	<u>Secondary</u>	<u>Federal</u>	<u>Total</u>
5200 Interfund Transfers – Out				
900 <u>Other Uses of Funds</u>				
939 Other Fund Transfers				1,851,175.40
Total Other Uses of Funds				\$1,851,175.40
Total 5200 Interfund Transfers – Out				\$1,851,175.40

LEA : 124150503 Avon Grove SD

Printed 11/21/2019 1:42:12 PM

General Fund (10)

5230 Capital Projects Fund Transfers

Elementary

Secondary

Federal

Total

900 Other Uses of Funds

939 Other Fund Transfers

1,850,000.00

Total Other Uses of Funds

\$1,850,000.00

Total 5230 Capital Projects Fund Transfers

\$1,850,000.00

LEA : 124150503 Avon Grove SD

Printed 11/21/2019 1:42:12 PM

General Fund (10)

5250 Enterprise Fund Transfers

Elementary

Secondary

Federal

Total

900 Other Uses of Funds

939 Other Fund Transfers

1,175.40

Total Other Uses of Funds

\$1,175.40

Total 5250 Enterprise Fund Transfers

\$1,175.40

Other Capital Projects Fund (39)

2000 Support Services

Total

300 Purchased Professional and Technical Services

330 Other Professional Services 48,826.19

Total Purchased Professional and Technical Services \$48,826.19

700 Property

766 Capitalized Technology Equipment – Replacement 196,663.00

Total Property \$196,663.00

800 Other Objects

810 Dues and Fees 542,779.86

Total Other Objects \$542,779.86

Total 2000 Support Services \$788,269.05

Other Capital Projects Fund (39)

2300 Support Services – Administration

Elementary

Secondary

Federal

Total

300 Purchased Professional and Technical Services

330 Other Professional Services

48,826.19

Total Purchased Professional and Technical Services

\$48,826.19

800 Other Objects

810 Dues and Fees

542,779.86

Total Other Objects

\$542,779.86

Total 2300 Support Services – Administration

\$591,606.05

LEA : 124150503 Avon Grove SD

Printed 11/21/2019 1:41:46 PM

Other Capital Projects Fund (39)

2350 Legal and Accounting Services

Elementary

Secondary

Federal

Total

300 Purchased Professional and Technical Services

330 Other Professional Services

48,826.19

Total Purchased Professional and Technical Services

\$48,826.19

Total 2350 Legal and Accounting Services

\$48,826.19

LEA : 124150503 Avon Grove SD

Printed 11/21/2019 1:41:46 PM

Other Capital Projects Fund (39)

2390 Other Administration Services

Elementary

Secondary

Federal

Total

800 Other Objects

810 Dues and Fees

542,779.86

Total Other Objects

\$542,779.86

Total 2390 Other Administration Services

\$542,779.86

LEA : 124150503 Avon Grove SD

Printed 11/21/2019 1:41:46 PM

Other Capital Projects Fund (39)

2800 Support Services – Central

Elementary

Secondary

Federal

Total

700 Property

766 Capitalized Technology Equipment – Replacement

196,663.00

Total Property

\$196,663.00

Total 2800 Support Services – Central

\$196,663.00

Other Capital Projects Fund (39)

2810 Planning, Research, Development and Evaluation Services

Elementary

Secondary

Federal

Total

700 Property

766 Capitalized Technology Equipment – Replacement

196,663.00

Total Property

\$196,663.00

Total 2810 Planning, Research, Development and Evaluation Services

\$196,663.00

Other Capital Projects Fund (39)

4000 Facilities Acquisition, Construction and Improvement Services

Total

300 Purchased Professional and Technical Services

330 Other Professional Services	1,600,631.89
390 Other Purchased Professional and Technical Services	34,338.28

Total Purchased Professional and Technical Services	\$1,634,970.17
--	-----------------------

400 Purchased Property Services

430 Repairs and Maintenance Services	269,015.11
450 Construction Services	428,087.00

Total Purchased Property Services	\$697,102.11
--	---------------------

600 Supplies

610 General Supplies	11,710.05
----------------------	-----------

Total Supplies	\$11,710.05
-----------------------	--------------------

700 Property

710 Land and Improvements	1,662,095.59
752 Capital Equipment – Original and Additional	6,154.01

Total Property	\$1,668,249.60
-----------------------	-----------------------

Total 4000 Facilities Acquisition, Construction and Improvement Services	\$4,012,031.93
---	-----------------------

Other Capital Projects Fund (39)

4100 Site Acquisition Services – Original and Additional

Elementary

Secondary

Federal

Total

300 Purchased Professional and Technical Services

330 Other Professional Services

1,055.00

Total Purchased Professional and Technical Services

\$1,055.00

Total 4100 Site Acquisition Services – Original and Additional

\$1,055.00

Other Capital Projects Fund (39)

4200 Existing Site Improvement Services

Elementary

Secondary

Federal

Total

300 Purchased Professional and Technical Services

330 Other Professional Services

39,950.00

Total Purchased Professional and Technical Services

\$39,950.00

700 Property

710 Land and Improvements

1,662,095.59

Total Property

\$1,662,095.59

Total 4200 Existing Site Improvement Services

\$1,702,045.59

Other Capital Projects Fund (39)

4300 Architecture and Engineering Services / Educational Specifications Development – Original and Additional

Elementary

Secondary

Federal

Total

300 Purchased Professional and Technical Services

330 Other Professional Services

1,550,376.89

390 Other Purchased Professional and Technical Services

34,338.28

Total Purchased Professional and Technical Services

\$1,584,715.17

Total 4300 Architecture and Engineering Services / Educational Specifications Development – Original and Additional

\$1,584,715.17

Other Capital Projects Fund (39)

4400 Architecture and Engineering Services / Educational Specifications – Improvements

Elementary

Secondary

Federal

Total

300 Purchased Professional and Technical Services

330 Other Professional Services

9,250.00

Total Purchased Professional and Technical Services

\$9,250.00

Total 4400 Architecture and Engineering Services / Educational Specifications – Improvements

\$9,250.00

LEA : 124150503 Avon Grove SD

Printed 11/21/2019 1:42:02 PM

Other Capital Projects Fund (39)

4600 Existing Building Improvement Services

Elementary

Secondary

Federal

Total

400 Purchased Property Services

430 Repairs and Maintenance Services

269,015.11

450 Construction Services

428,087.00

Total Purchased Property Services

\$697,102.11

600 Supplies

610 General Supplies

11,710.05

Total Supplies

\$11,710.05

700 Property

752 Capital Equipment – Original and Additional

6,154.01

Total Property

\$6,154.01

Total 4600 Existing Building Improvement Services

\$714,966.17

Other Capital Projects Fund (39)

5000 Other Expenditures and Financing Uses

Total

900 Other Uses of Funds

990 Miscellaneous Other Uses of Funds

317,143.75

Total Other Uses of Funds

\$317,143.75

Total 5000 Other Expenditures and Financing Uses

\$317,143.75

Other Capital Projects Fund (39)

5100 Debt Service / Other Expenditures and Financing Uses

Elementary

Secondary

Federal

Total

900 Other Uses of Funds

990 Miscellaneous Other Uses of Funds

317,143.75

Total Other Uses of Funds

\$317,143.75

Total 5100 Debt Service / Other Expenditures and Financing Uses

\$317,143.75

Other Capital Projects Fund (39)

5150 Bond Discounts

Elementary

Secondary

Federal

Total

900 Other Uses of Funds

990 Miscellaneous Other Uses of Funds

317,143.75

Total Other Uses of Funds

\$317,143.75

Total 5150 Bond Discounts

\$317,143.75

	<u>General Fund(10)</u>	<u>Public Purpose Trust(27)</u>	<u>Other Compt Approved (28)</u>	<u>Athletic / Activity(29)</u>	<u>Capital Reserve (690, 1850)(31)</u>
1000 Instruction					
1100 Regular Programs - Elementary / Secondary	43,229,611.82				
1200 Special Programs - Elementary / Secondary	14,215,379.89				
1300 Vocational Education	3,376,052.97				
1400 Other Instructional Programs - Elementary / Secondary	38,499.34				
1500 Nonpublic School Programs	1,776.00				
Total Instruction	\$60,861,320.02				
2000 Support Services					
2100 Support Services - Students	4,226,249.27				
2200 Support Services - Instructional Staff	2,484,183.07				
2300 Support Services - Administration	4,188,267.40				
2400 Support Services - Pupil Health	922,323.51				
2500 Support Services - Business	840,546.48				
2600 Operation and Maintenance of Plant Services	3,904,862.61				
2700 Student Transportation Services	6,176,985.10				
2800 Support Services - Central	2,743,511.35				
2900 Other Support Services	217,736.75				
Total Support Services	\$25,704,665.54				
3000 Operation of Non-Instructional Services					
3200 Student Activities	1,255,294.11				
3300 Community Services	36,362.04				
3400 Scholarships and Awards	13,623.29				
Total Operation of Non-Instructional Services	\$1,305,279.44				
4000 Facilities Acquisition, Construction and Improvement Services					
4100 Site Acquisition Services - Original and Additional					
4200 Existing Site Improvement Services					
4300 Architecture and Engineering Services / Educational Specifications Development - Original and Additional					
4400 Architecture and Engineering Services / Educational Specifications - Improvements					
4600 Existing Building Improvement Services					
Total Facilities Acquisition, Construction and Improvement Services					
5000 Other Expenditures and Financing Uses					
5100 Debt Service / Other Expenditures and Financing Uses	3,930,690.83				
5200 Interfund Transfers - Out	1,851,175.40				
Total Other Expenditures and Financing Uses	\$5,781,866.23				

	<u>Capital Reserve (1431)(32)</u>	<u>Other Capital Projects Fund(39)</u>	<u>Debt Service(40)</u>	<u>Permanent(90)</u>	<u>Total</u>
1000 Instruction					
1100 Regular Programs - Elementary / Secondary					43,229,611.82
1200 Special Programs - Elementary / Secondary					14,215,379.89
1300 Vocational Education					3,376,052.97
1400 Other Instructional Programs - Elementary / Secondary					38,499.34
1500 Nonpublic School Programs					1,776.00
Total Instruction					\$60,861,320.02
2000 Support Services					
2100 Support Services - Students					4,226,249.27
2200 Support Services - Instructional Staff					2,484,183.07
2300 Support Services - Administration		591,606.05			4,779,873.45
2400 Support Services - Pupil Health					922,323.51
2500 Support Services - Business					840,546.48
2600 Operation and Maintenance of Plant Services					3,904,862.61
2700 Student Transportation Services					6,176,985.10
2800 Support Services - Central		196,663.00			2,940,174.35
2900 Other Support Services					217,736.75
Total Support Services		\$788,269.05			\$26,492,934.59
3000 Operation of Non-Instructional Services					
3200 Student Activities					1,255,294.11
3300 Community Services					36,362.04
3400 Scholarships and Awards					13,623.29
Total Operation of Non-Instructional Services					\$1,305,279.44
4000 Facilities Acquisition, Construction and Improvement Services					
4100 Site Acquisition Services - Original and Additional		1,055.00			1,055.00
4200 Existing Site Improvement Services		1,702,045.59			1,702,045.59
4300 Architecture and Engineering Services / Educational Specifications Development - Original and Additional		1,584,715.17			1,584,715.17
4400 Architecture and Engineering Services / Educational Specifications - Improvements		9,250.00			9,250.00
4600 Existing Building Improvement Services		714,966.17			714,966.17
Total Facilities Acquisition, Construction and Improvement Services		\$4,012,031.93			\$4,012,031.93
5000 Other Expenditures and Financing Uses					
5100 Debt Service / Other Expenditures and Financing Uses			317,143.75		4,247,834.58
5200 Interfund Transfers - Out					1,851,175.40
Total Other Expenditures and Financing Uses			\$317,143.75		\$6,099,009.98

	<u>General Fund(10)</u>	<u>Public Purpose Trust(27)</u>	<u>Other Compt Approved (28)</u>	<u>Athletic / Activity(29)</u>	<u>Capital Reserve (690. 1850)(31)</u>
TOTAL ACTUAL EXPENDITURES & OTHER FINANCING USES	\$93,653,131.23				

	<u>Capital Reserve (1431)(32)</u>	<u>Other Capital Projects Fund(39)</u>	<u>Debt Service(40)</u>	<u>Permanent(90)</u>	<u>Total</u>
TOTAL ACTUAL EXPENDITURES & OTHER FINANCING USES		\$5,117,444.73			\$98,770,575.96

LEA : 124150503 Avon Grove SD

Printed 11/21/2019 1:43:05 PM

PSERS Salary Data (Salary Data should relate to the General Fund only)

Amount Description	Amount
Total Salary Base for salaries subject to PSERS withholding	32,308,423.76
Total Federally Funded salaries subject to PSERS withholding	286,976.81
	<hr/>

Title I Expenditure Data

Amount Description	Amount
Expenditures Funded with Current Title I Funds	276,178.50
Expenditures Funded with Carry over Title I Funds	
Total Title I Expenditure Data	<hr/> \$276,178.50 <hr/>

Benefits for Staff Relative to Collective Bargaining Agreements

	OBJECT	COVERED	NOT COVERED	TOTAL
10 General Fund				
	211 Medical Insurance			
	212 Dental Insurance			
	215 Eye Care Insurance			
	216 Prescription Insurance			
	271 Self-Insurance Medical Benefits	4,981,813.67	483,397.15	5,465,210.82
	272 Self-Insurance Dental Benefits	246,992.22	28,041.67	275,033.89
	275 Self-Insurance Eye Care Benefits	68,809.61	7,740.95	76,550.56
	276 Self-Insurance Prescription Benefits	19,619.66	4,377.84	23,997.50
	FUND TOTAL	\$5,317,235.16	\$523,557.61	\$5,840,792.77
50 Enterprise Fund				
	211 Medical Insurance			
	212 Dental Insurance			
	215 Eye Care Insurance			
	216 Prescription Insurance			
	271 Self-Insurance Medical Benefits	105,907.92	18,220.92	124,128.84
	272 Self-Insurance Dental Benefits	6,313.80	1,010.04	7,323.84
	275 Self-Insurance Eye Care Benefits	2,052.16	266.52	2,318.68
	276 Self-Insurance Prescription Benefits	7,524.51		7,524.51
	FUND TOTAL	\$121,798.39	\$19,497.48	\$141,295.87
60 Internal Service Fund				
	211 Medical Insurance			
	212 Dental Insurance			
	215 Eye Care Insurance			
	216 Prescription Insurance			
	271 Self-Insurance Medical Benefits	4,281,740.21	427,506.30	4,709,246.51
	272 Self-Insurance Dental Benefits	308,337.35	30,785.65	339,123.00
	275 Self-Insurance Eye Care Benefits	61,630.79	6,153.47	67,784.26
	276 Self-Insurance Prescription Benefits	970,269.59	96,875.64	1,067,145.23
	FUND TOTAL	\$5,621,977.94	\$561,321.06	\$6,183,299.00
Total of All Funds		\$11,061,011.49	\$1,104,376.15	\$12,165,387.64

LEA : 124150503 Avon Grove SD

Printed 11/21/2019 1:43:26 PM

Function	Special Education (Prior Year)	Nonspecial Education (Prior Year)	Total (Prior Year)	Special Education (Current Year)	Nonspecial Education (Current Year)	Total (Current Year)
2120 Guidance Services	260,719.91	1,727,269.41	1,987,989.32	263,522.42	1,907,970.73	2,171,493.15
2140 Psychological Services	655,060.92	34,476.89	689,537.81	677,627.27	35,664.59	713,291.86
2150 Speech Pathology and Audiology Services	464,946.37	24,470.86	489,417.23	483,520.79	25,448.46	508,969.25
2160 Social Work Services						
2260 Instruction and Curriculum Development Services				232,331.01	907,937.65	1,140,268.66
2350 Legal and Accounting Services	121,280.97	205,274.86	326,555.83	54,414.20	155,077.20	209,491.40
2420 Medical Services						
2440 Nursing Services	116,773.13	773,622.02	890,395.15	111,801.20	809,469.73	921,270.93
2700 Student Transportation Services	1,688,887.86	4,403,719.72	6,092,607.58	1,691,584.36	4,485,400.74	6,176,985.10
Total	\$3,307,669.16	\$7,168,833.76	\$10,476,502.92	\$3,514,801.25	\$8,326,969.10	\$11,841,770.35

LEA : 124150503 Avon Grove SD

Printed 11/21/2019 1:43:31 PM

(PRINCIPAL AMOUNTS ONLY)

GOVERNMENTAL FUNDS/ ACTIVITIES

	Short-Term Borrowing	General Obligation Bonds/Notes	Authority Building Obligations	Other Long-Term Debt	Other Post-Employment Benefits (OPEB)	Compensated Absences	Net Pension Liability	Total
1. Debt at Beginning of Fiscal Year		15,605,000.00		52,559.00	21,719,881.00	1,566,295.00	113,084,202.00	152,027,937.00
2. Additional Debt Incurred During Year		36,245,000.00			1,036,813.00			37,281,813.00
3. Retirements and Repayments		2,915,000.00		10,587.00		69,628.00	950,270.00	3,945,485.00
4. Debt at End of Fiscal Year		48,935,000.00		41,972.00	22,756,694.00	1,496,667.00	112,133,932.00	185,364,265.00
5. Accreted Interest at End Of Fiscal Year								
6. Total Debt and Accreted Interest		48,935,000.00		41,972.00	22,756,694.00	1,496,667.00	112,133,932.00	185,364,265.00
7. Current Portion P&I - Due within 1 year		4,912,085.00		12,678.00		64,888.00		4,989,651.00
8. Interest Paid during current fiscal year		1,015,310.00		2,091.00				1,017,401.00

(PRINCIPAL AMOUNTS ONLY)

PROPRIETARY FUNDS

	Short-Term Borrowing	General Obligation Bonds/Notes	Authority Building Obligations	Other Long-Term Debt	Other Post-Employment Benefits (OPEB)	Compensated Absences	Net Pension Liability	Total
1. Debt at Beginning of Fiscal Year					82,123.00		1,990,798.00	2,072,921.00
2. Additional Debt Incurred During Year					3,616.00	38,862.00		42,478.00
3. Retirements and Repayments							16,730.00	16,730.00
4. Debt at End of Fiscal Year					85,739.00	38,862.00	1,974,068.00	2,098,669.00
5. Accreted Interest at End Of Fiscal Year								
6. Total Debt and Accreted Interest					85,739.00	38,862.00	1,974,068.00	2,098,669.00
7. Current Portion P&I - Due within 1 year						146.00		146.00
8. Interest Paid during current fiscal year								

Total Principal and Interest Payments Made by Your School - All Funds

Function	Fund		Principal (910)	Principal (920)	Interest (830)	Total (Principal +Interest)	Misc Other Uses (990)
5110	10	General Fund	2,915,000.00		1,015,309.46	3,930,309.46	
5110	20	Special Revenue Funds					
5110	30	Capital Projects Funds					
5110	40	Debt Service Fund					
5110	90	Permanent Fund					
5120	10	General Fund					
5120	20	Special Revenue Funds					
5120	30	Capital Projects Funds					
5120	40	Debt Service Fund					

Total Debt Payments - Governmental Funds			\$2,915,000.00		\$1,015,309.46	\$3,930,309.46	
---	--	--	-----------------------	--	-----------------------	-----------------------	--

Function	Fund		Principal (910)	Principal (920)	Interest (830)	Total (Principal +Interest)
5110	50	Enterprise Fund				
5110	60	Internal Service Fund				
5120	50	Enterprise Fund				
5120	60	Internal Service Fund				

Total Debt Payments - Proprietary Funds						
--	--	--	--	--	--	--

LEA : 124150503 Avon Grove SD

Printed 11/21/2019 1:43:31 PM

Debt Details
Governmental Funds/ Activities

Debt Category	Debt Issue Date (MM/YYYY)	Principal Amounts Only			Debt at End of Fiscal Year	Current Portion Due Within One Year (Principal and Interest)	Interest Paid During Fiscal Year
		Debt at Beginning of Fiscal Year	Additions	Reductions / Repayments			
General Obligation Bonds/Notes – CIB	12/2018		36,245,000.00		36,245,000.00	1,645,745.00	660,876.00
General Obligation Bonds/Notes – CIB	05/2015	2,845,000.00		665,000.00	2,180,000.00	761,300.00	88,600.00
General Obligation Bonds/Notes – CIB	07/2014	5,280,000.00		1,460,000.00	3,820,000.00	1,571,400.00	116,294.00
General Obligation Bonds/Notes – CIB	09/2012	1,080,000.00		210,000.00	870,000.00	220,350.00	19,500.00
General Obligation Bonds/Notes – CIB	09/2012	6,400,000.00		580,000.00	5,820,000.00	713,290.00	130,040.00
Extended Term Financing Agreements		52,559.00		10,587.00	41,972.00	12,678.00	2,091.00
Compensated Absences		1,566,295.00		69,628.00	1,496,667.00	64,888.00	
Other Post-Employment Benefits (OPEB)		21,719,881.00	1,036,813.00		22,756,694.00		
Net Pension Liability		113,084,202.00		950,270.00	112,133,932.00		
Totals for Debt Entered:		\$152,027,937.00	\$37,281,813.00	\$3,945,485.00	\$185,364,265.00	\$4,989,651.00	\$1,017,401.00

Bond Details
Proprietary Funds

Debt Category	Debt Issue Date (MM/YYYY)	Principal Amounts Only			Debt at End of Fiscal Year	Current Portion Due Within One Year (Principal and Interest)	Interest Paid During Fiscal Year
		Debt at Beginning of Fiscal Year	Additions	Reductions / Repayments			
Compensated Absences			38,862.00		38,862.00	146.00	
Other Post-Employment Benefits (OPEB)		82,123.00	3,616.00		85,739.00		
Net Pension Liability		1,990,798.00		16,730.00	1,974,068.00		
Totals for Debt Entered:		\$2,072,921.00	\$42,478.00	\$16,730.00	\$2,098,669.00	\$146.00	

General Fund (10)

Section 1: Tuition/Purchased Services as Reported within Expenditure Detail

	Amount
Tuition Reported in General Fund Expenditures 1000-560	11,654,096.28
Purchased Services in General Fund Expenditures 1000-594 and 1000-597	

Section 1 Total	\$11,654,096.28
------------------------	------------------------

Section 2: Tuition Paid to Institution Types During Fiscal Year

	Tuition Paid For Nonspecial Education	Tuition Paid For Special Education	Total
1 1306 Institutions			
2 Institutionalized Children's Programs			
3 Juveniles Incarcerated in Adult Facilities			
4 Residential Treatment Facilities			
5 Other Local Education Agencies	21,031.12	33,964.59	54,995.71
6 Brick and Mortar Charter Schools	7,290,618.40	2,689,745.30	9,980,363.70
7 Cyber Charter Schools	529,439.85	480,185.20	1,009,625.05
8 Career and Technology Centers	109,109.85		109,109.85
9 Approved Private Schools		374,379.81	374,379.81
10 PA Chartered Schools for the Deaf and Blind		5,500.00	5,500.00
11 Private Residential Rehabilitative Institutions		45,334.73	45,334.73
12 Juvenile Detention Centers		65,282.43	65,282.43
13 Special Program Jointures			
14 Other Tuition Not Included Elsewhere In This Section		9,505.00	9,505.00
Section 2 Total	\$7,950,199.22	\$3,703,897.06	\$11,654,096.28

Food Service / Cafeteria Operations Fund (51)

3000 Operation of Non-Instructional Services

Total

100 Personnel Services – Salaries

100 Personnel Services – Salaries 606,010.05

Total Personnel Services – Salaries \$606,010.05

200 Personnel Services – Employee Benefits

210 Group Insurance – Contracted Provider 1,528.72

220 Social Security Contributions 45,115.66

230 PSERS Retirement Contributions 225,394.38

250 Unemployment Compensation 1,643.89

260 Workers' Compensation 4,339.34

270 Group Insurance – Self-Insurance 141,295.87

292 Health Savings Accounts 16,500.00

Total Personnel Services – Employee Benefits \$435,817.86

300 Purchased Professional and Technical Services

330 Other Professional Services 1,975.00

390 Other Purchased Professional and Technical Services 1,147.81

Total Purchased Professional and Technical Services \$3,122.81

400 Purchased Property Services

430 Repairs and Maintenance Services 15,511.02

440 Rentals 176.40

Total Purchased Property Services \$15,687.42

500 Other Purchased Services

530 Communications 895.36

540 Advertising 893.66

580 Travel 2,516.04

Total Other Purchased Services \$4,305.06

600 Supplies

610 General Supplies 72,119.90

630 Food 937,576.30

650 Supplies & Fees – Technology Related 8,600.10

Total Supplies \$1,018,296.30

700 Property

740 Depreciation 9,955.10

Total Property \$9,955.10

800 Other Objects

810 Dues and Fees 2,628.05

890 Miscellaneous Expenditures 1,175.40

Total Other Objects \$3,803.45

Total 3000 Operation of Non-Instructional Services \$2,096,998.05

Food Service / Cafeteria Operations Fund (51)

	<u>Elementary</u>	<u>Secondary</u>	<u>Federal</u>	<u>Total</u>
3100 Food Services				
100 Personnel Services – Salaries				
100 Personnel Services – Salaries				606,010.05
Total Personnel Services – Salaries				\$606,010.05
200 Personnel Services – Employee Benefits				
210 Group Insurance – Contracted Provider				1,528.72
220 Social Security Contributions				45,115.66
230 PSERS Retirement Contributions				225,394.38
250 Unemployment Compensation				1,643.89
260 Workers' Compensation				4,339.34
270 Group Insurance – Self-Insurance				141,295.87
292 Health Savings Accounts				16,500.00
Total Personnel Services – Employee Benefits				\$435,817.86
300 Purchased Professional and Technical Services				
330 Other Professional Services				1,975.00
390 Other Purchased Professional and Technical Services				1,147.81
Total Purchased Professional and Technical Services				\$3,122.81
400 Purchased Property Services				
430 Repairs and Maintenance Services				15,511.02
440 Rentals				176.40
Total Purchased Property Services				\$15,687.42
500 Other Purchased Services				
530 Communications				895.36
540 Advertising				893.66
580 Travel				2,516.04
Total Other Purchased Services				\$4,305.06
600 Supplies				
610 General Supplies				72,119.90
630 Food				937,576.30
650 Supplies & Fees – Technology Related				8,600.10
Total Supplies				\$1,018,296.30
700 Property				
740 Depreciation				9,955.10
Total Property				\$9,955.10
800 Other Objects				
810 Dues and Fees				2,628.05
890 Miscellaneous Expenditures				1,175.40
Total Other Objects				\$3,803.45
Total 3100 Food Services				\$2,096,998.05

Internal Service Fund (60)

2000 Support Services

Total

200 Personnel Services – Employee Benefits

270 Group Insurance – Self-Insurance

6,183,299.56

Total Personnel Services – Employee Benefits

\$6,183,299.56

Total 2000 Support Services

\$6,183,299.56

Internal Service Fund (60)

2800 Support Services – Central

Elementary

Secondary

Federal

Total

200 Personnel Services – Employee Benefits

270 Group Insurance – Self-Insurance

6,183,299.56

Total Personnel Services – Employee Benefits

\$6,183,299.56

Total 2800 Support Services – Central

\$6,183,299.56

LEA : 124150503 Avon Grove SD

Printed 11/21/2019 1:43:51 PM

Internal Service Fund (60)

2830 Staff Services

Elementary

Secondary

Federal

Total

200 Personnel Services – Employee Benefits

270 Group Insurance – Self-Insurance

6,183,299.56

Total Personnel Services – Employee Benefits

\$6,183,299.56

Total 2830 Staff Services

\$6,183,299.56

LEA : 124150503 Avon Grove SD

Printed 11/21/2019 1:43:51 PM

Internal Service Fund (60)

2835 Health Services

Elementary

Secondary

Federal

Total

200 Personnel Services – Employee Benefits

270 Group Insurance – Self-Insurance

6,183,299.56

Total Personnel Services – Employee Benefits

\$6,183,299.56

Total 2835 Health Services

\$6,183,299.56

	<u>Food Service(51)</u>	<u>Child Care Operations(52)</u>	<u>Other Enterprise(58)</u>	<u>Internal Service(60)</u>	<u>Total</u>
2000 Support Services					
2800 Support Services - Central				6,183,299.56	6,183,299.56
Total Support Services				\$6,183,299.56	\$6,183,299.56
3000 Operation of Non-Instructional Services					
3100 Food Services	2,096,998.05				2,096,998.05
Total Operation of Non-Instructional Services	\$2,096,998.05				\$2,096,998.05
TOTAL ACTUAL EXPENDITURES & OTHER FINANCING USES	\$2,096,998.05			\$6,183,299.56	\$8,280,297.61

LEA : 124150503 Avon Grove SD

Printed 11/21/2019 1:44:26 PM

Fund	School	School Number	Local Personnel	Local Nonpersonnel	State Personnel	State Nonpersonnel	Federal Personnel	Federal Nonpersonnel	Total	Explanation
10										
	Avon Grove HS	1367	12,361,764.65	3,293,952.30	6,561,627.24	1,748,430.57	104,420.42	53,851.66	24,124,046.84	
	Avon Grove Intrmd Sch	1365	9,730,378.05	2,714,663.96	5,164,886.69	1,440,944.20	7,572.55	6,429.99	19,064,875.44	
	Fred S Engle MS	5216	6,391,150.04	1,024,325.85	3,392,423.77	543,712.38	1,266.58	3,643.15	11,356,521.77	
	Penn London El Sch	7323	6,123,293.08	1,603,521.08	3,250,245.23	851,149.32	299,531.06	11,739.26	12,139,479.03	
Total			34,606,585.82	8,636,463.19	18,369,182.93	4,584,236.47	412,790.61	75,664.06	66,684,923.08	