

LEA Name : Avon Grove SD
Address : 375 S Jennersville Road
West Grove , PA 19390

County : Chester
AUN Number : 124150503
LEA Type : SD

Annual Financial Report Accuracy Certification Statement

For Fiscal Year Ending
6/30/2024

Pennsylvania Department of Education
&
Office of Comptroller Operations

PDE-2056: Intermediate Unit

PDE-2057: School District, AVTS/CTC, Charter School,
and Special Program Jointure

CERTIFICATION: By signing this page I agree that the electronic data submitted is a complete and accurate statement of the financial operations and status of the local education agency for the fiscal year. It has been prepared in accordance with generally accepted accounting principles and established Commonwealth of PA reporting guidelines.



Chief School Administrator Signature

11-8-24

Date

Menda Lee Claw

Board Secretary Signature

11-11-2024

Date

Daniel Carsley

Contact Person

dcarsley@avongrove.org

Contact Person E-mail Address

(610)869-2441

Ext :

Contact Person Telephone Number

Contact Person Fax Number

Audit Certification
Annual Financial Report:
For Fiscal Year Ending **6/30/2024**
(Pursuant to PA School Code Section 218(b))

LEA Name : Avon Grove SD
AUN Number : 124150503
County : Chester

Audit Certification Due: 12/31/2024

This certification is applicable to the Annual Financial Report data submitted through the Consolidated Financial Reporting System (CFRS).

CERTIFICATION: By signing this page I agree that the financial statements of the school have been properly audited as noted above pursuant to Article XXIV, and in the auditor's professional opinion, the Annual Financial Report (PDE-2057) submitted through CFRS is materially consistent with the audited financial statements.

Chief School Administrator


Signature

11/8/24

Date

Board Secretary


Signature

11.11.2024

Date

Daniel Carsley

Contact Person

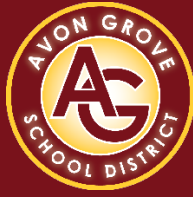
(610)869-2441 Ext :

Contact Person Telephone Number

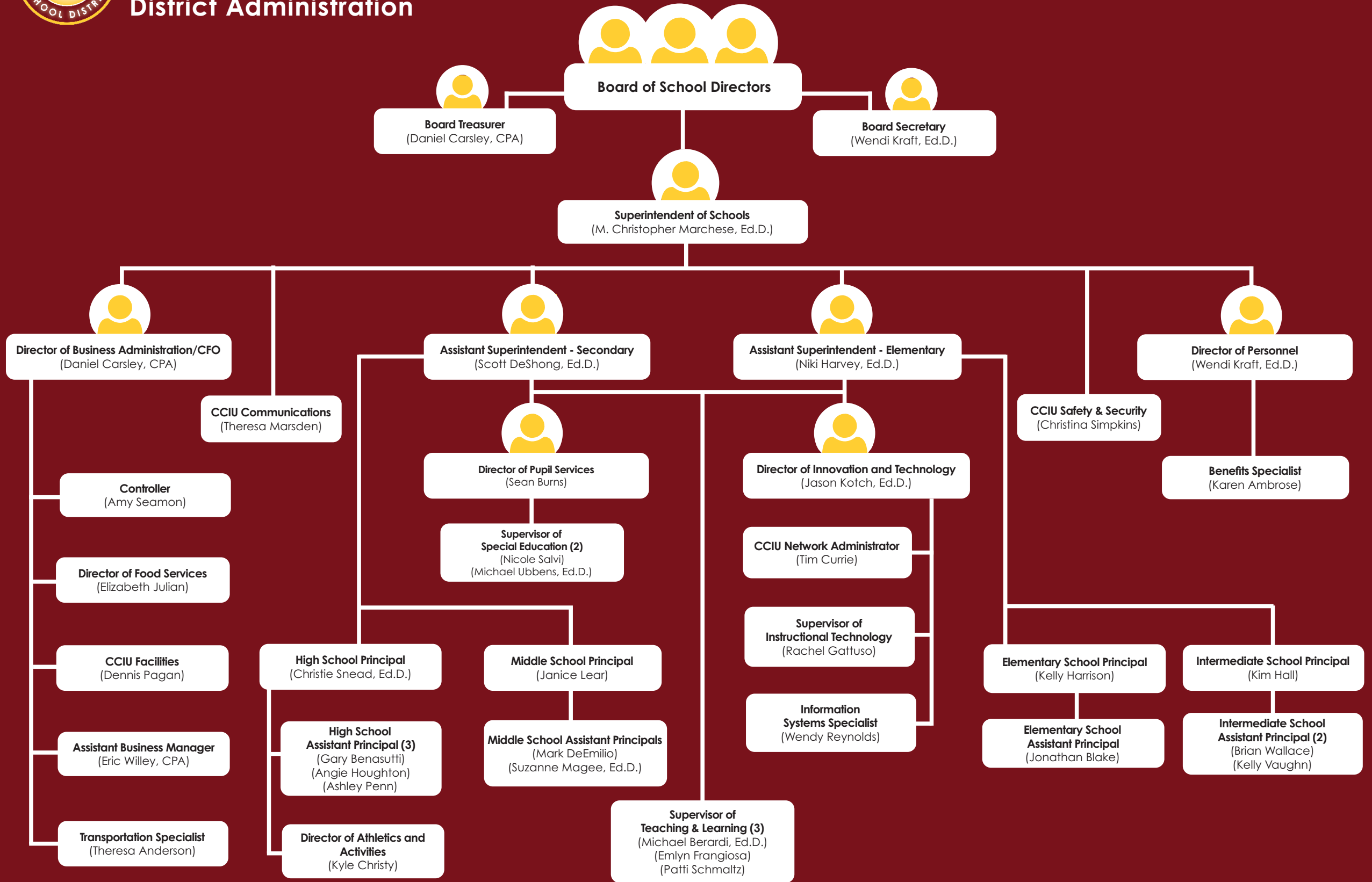
dcarsley@avongrove.org

Contact Person E-mail Address

Contact Person Fax Number



2023-2024 Organizational Diagram of District Administration





Book	Policy Manual
Section	600 Finances
Title	GASB Statement 34
Code	622
Status	Active
Adopted	August 25, 2005
Last Revised	May 26, 2022
Prior Revised Dates	01/28/2010

Purpose

The Board recognizes the need to comply with the requirements set forth by GASB Statement No. 34 as it pertains to capital asset reporting.

GASB Statement No. 34 requires the District to implement full accrual financial statement reporting and establish capital asset tracking and accounting as a result of those requirements. The primary objectives of implementing GASB Statement 34 are to assure compliance with state requirements, and to properly account for both the financial and economic resources of the District. This policy, in conjunction with GASB Statement No. 34, is intended to document the District's capital asset guidelines.

Definition

Capital assets include land, improvements to land, easements, buildings, building improvements, vehicles, machinery, equipment, works of art and historical treasures, infrastructure and tangible assets used in operations which have initial useful lives in excess of one (1) year and exceed the prescribed acquisition thresholds identified below. Equipment that will not change its original shape, appearance or character with use and can be expected to last more than one (1) year with reasonable care and maintenance is a capital asset.[1]

Guidelines

Purchased Capital Assets

1. Purchased capital assets greater than \$5,000 should be recorded at their historical/original cost. The cost of capital assets should include ancillary charges necessary to place the asset into service. Ancillary charges include freight, transportation, site preparation and professional fees. Purchases less than \$5,000 will be treated as supplies and are coded to the supply objects prescribed by the Pennsylvania Public School Accounting Manual.[1]
2. Capital assets should be depreciated over their useful lives as determined for each asset class. Inexhaustible capital assets such as land and land improvements should not be depreciated.
3. If determining historical costs is not practical due to inadequate records, reporting should be on an estimate of original cost at the date of construction or purchase.

4. Fixed asset records must include the acquisition date, cost, useful life and method of depreciation for each capital asset classification and group.
5. Individual items less than \$5,000 but purchased in the aggregate totaling \$10,000 that meet the other fixed asset definitions, shall be capitalized and depreciated as a unit over the useful life for that asset class.

Donated Capital Assets

1. Donated capital assets must be reported at fair market value at the time of acquisition plus ancillary charges, if any. Donated assets are recorded as contributed capital and depreciated over their useful lives as determined for each asset class.

Collections

1. Works of art, historical treasures and similar assets should be capitalized at their historical cost or fair value at the date of donation (estimated if necessary), whether they are held as individual items or in a collection.
2. Capitalized collections or individual items that are exhaustible should be depreciated over their useful lives. Depreciation is not required for collections or individual items that are inexhaustible.

Infrastructure

1. **Infrastructure assets** are long lived capital assets that normally are stationary in nature and can normally be preserved for a significantly greater number of years than most capital assets. Infrastructure includes, but is not limited to, parking lot, sidewalks, driveways and drainage systems.
2. Infrastructure assets should be depreciated over their useful lives.
3. Routine repairs and maintenance costs are charges to operations as incurred. Expenditures that extend the useful life of the infrastructure are capitalized as part of the asset and depreciated over the newly established useful life.

Useful Lives

Fixed assets are to be depreciated over their useful lives. A schedule of asset classes and their estimated useful lives follows.

Asset Class	Years
School Buildings	40-50
Portable Classrooms	20-25
HVAC Systems	20-25
Interior Construction	25-30
Sprinkler/Fire System	20-25
Outdoor Equipment	15-20
Machinery & Tools	10-15
Kitchen Equipment	10-15
Custodial Equipment	5-7
Furniture & Accessories	15-20

Copiers	3-5
Computers	3-5
Audio Visual	7-10
Communication	5-10

Depreciation

1. Depreciation expense should be reported in the statement of activities. Depreciation expense that can be specifically identified with a function should be included as a direct expense. Depreciation expense for shared facilities should be ratably included in direct expenses for each function.
2. Depreciation is allocated to expense in a systematic and rational manner. The straight-line method of depreciation is used for all fixed asset classes in accordance with the useful lives established for each asset classification. Depreciation charts do not include a salvage value.
3. Depreciation may be calculated for a class of assets, a network of assets or individual assets.

Disposal

1. Sale of Fixed Assets – When fixed assets are sold, a calculation of gain or loss on disposal is required. The calculation is based upon the amount of proceeds received less the net book value.
2. Trade-ins – The value given for a trade is part of the cost of the newly acquired asset. The costs and accumulated depreciation of the traded-in asset must be removed from the records. Any gain or loss resulting from the disposition of the asset will be recognized as a gain or loss on disposal in the entity-wide operating statements.
3. Any disposal shall be recorded in the District's property records in accordance with Board Policy 706 Property Records.[2]

Leases

Assets acquired under lease arrangements are accounted for in accordance with GASB Statement No. 87.

Repairs and Maintenance

Extraordinary repairs greater than \$5,000 that extend the useful life of an asset beyond one (1) year should be capitalized, and the useful life of an entire asset for depreciation purposes should be revised. Routine repairs, maintenance and parts purchased to keep the asset in working condition are charged to expense as incurred whether they are greater than or equal to \$5,000.

Legal

1. Governmental Accounting Standards Board, Statement No. 34
2. Pol. 706
[24 P.S. 218](#)
[24 P.S. 613](#)

Amounts Expressed in Whole Dollars	<u>General Fund</u> <u>(10)</u>	<u>Student Sponsored</u> <u>Activity Fund</u> <u>(21)</u>	<u>Public Purpose Trust</u> <u>(27)</u>	<u>Other Compt Approved</u> <u>(28)</u>	<u>Athletic / Activity</u> <u>(29)</u>
Assets And Deferred Outflows Of Resources					
Assets					
0100 Cash and Cash Equivalents	4,243,191				
0110 Investments	42,452,536				
0120 Taxes Receivable	1,204,791				
0130 Due From Other Funds	4,549				
0141 Due From Other Governments	90,136				
0142 State Revenue Receivable	3,062,198				
0143 Federal Revenue Receivable	1,116,280				
0145 Other Intergovernmental Revenue Receivable					
0146 Due from Primary Government					
0147 Due from Component Unit					
0150 Other Receivables	78,192				
0170 Inventories					
0180 Prepaid Expenses (Expenditures)	24,022				
0190 Other Current Assets					
Total Assets	\$52,275,895				
0910 Deferred Outflows of Resources					
Total Assets And Deferred Outflows Of Resources	\$52,275,895				

Amounts Expressed in Whole Dollars

<u>Capital Reserve (690.</u>	<u>Capital Reserve (1431)</u>	<u>Other Capital Projects</u>	<u>Debt Service</u>	<u>Permanent</u>
<u>1850)</u>	<u>(32)</u>	<u>Fund</u>	<u>(40)</u>	<u>(90)</u>
<u>(31)</u>		<u>(39)</u>		

Assets And Deferred Outflows Of Resources

Assets

0100 Cash and Cash Equivalents	
0110 Investments	6,809,676
0120 Taxes Receivable	
0130 Due From Other Funds	4,936,838
0141 Due From Other Governments	
0142 State Revenue Receivable	
0143 Federal Revenue Receivable	
0145 Other Intergovernmental Revenue Receivable	
0146 Due from Primary Government	
0147 Due from Component Unit	
0150 Other Receivables	20,000
0170 Inventories	
0180 Prepaid Expenses (Expenditures)	2,279
0190 Other Current Assets	

Total Assets	\$11,768,793
---------------------	---------------------

0910 Deferred Outflows of Resources

Total Assets And Deferred Outflows Of Resources	\$11,768,793
--	---------------------

Amounts Expressed in Whole Dollars

Total Governmental Funds

Assets And Deferred Outflows Of Resources

Assets	
0100 Cash and Cash Equivalents	4,243,191
0110 Investments	49,262,212
0120 Taxes Receivable	1,204,791
0130 Due From Other Funds	4,941,387
0141 Due From Other Governments	90,136
0142 State Revenue Receivable	3,062,198
0143 Federal Revenue Receivable	1,116,280
0145 Other Intergovernmental Revenue Receivable	
0146 Due from Primary Government	
0147 Due from Component Unit	
0150 Other Receivables	98,192
0170 Inventories	
0180 Prepaid Expenses (Expenditures)	26,301
0190 Other Current Assets	
Total Assets	\$64,044,688
0910 Deferred Outflows of Resources	
Total Assets And Deferred Outflows Of Resources	\$64,044,688

Amounts Expressed in Whole Dollars	<u>General Fund</u> <u>(10)</u>	<u>Student Sponsored</u> <u>Activity Fund</u> <u>(21)</u>	<u>Public Purpose Trust</u> <u>(27)</u>	<u>Other Compt Approved</u> <u>(28)</u>	<u>Athletic / Activity</u> <u>(29)</u>
Liabilities And Deferred Inflows Of Resources And Fund Balances					
Liabilities					
0400 Due to Other Funds	9,030,666				
0411 Due to Other Governments					
0412 Due to Primary Government					
0413 Due to Component Unit					
0420 Accounts Payable	2,148,521				
0430 Contracts Payable					
0440 Current Portion of Long-Term Debt					
0450 Short-Term Payables					
0461 Accrued Salaries and Benefits	8,174,138				
0462 Payroll Deductions and Withholding	344,854				
0480 Unearned Revenues	443,897				
0490 Other Current Liabilities	185,134				
Total Liabilities	\$20,327,210				
0950 Deferred Inflows of Resources	883,017				
Fund Balances					
0810 Nonspendable Fund Balance	24,022				
0820 Restricted Fund Balance					
0830 Committed Fund Balance	5,998,719				
0840 Assigned Fund Balance	16,506,999				
0850 Unassigned Fund Balance	8,535,928				
Total Fund Balances	\$31,065,668				
Total Liabilities, Deferred Inflows Of Resources And Fund Balances	\$52,275,895				

LEA : 124150503 Avon Grove SD

Printed 11/11/2024 9:36:06 AM

Amounts Expressed in Whole Dollars

<u>Capital Reserve (690.</u>	<u>Capital Reserve (1431)</u>	<u>Other Capital Projects</u>	<u>Debt Service</u>	<u>Permanent</u>
<u>1850)</u>	<u>(32)</u>	<u>Fund</u>	<u>(40)</u>	<u>(90)</u>
<u>(31)</u>		<u>(39)</u>		

Liabilities And Deferred Inflows Of Resources And Fund Balances

Liabilities

0400 Due to Other Funds				
0411 Due to Other Governments				
0412 Due to Primary Government				
0413 Due to Component Unit				
0420 Accounts Payable			1,384,399	
0430 Contracts Payable			568,128	
0440 Current Portion of Long-Term Debt				
0450 Short-Term Payables				
0461 Accrued Salaries and Benefits				
0462 Payroll Deductions and Withholding				
0480 Unearned Revenues				
0490 Other Current Liabilities				

Total Liabilities	\$1,952,527
--------------------------	--------------------

0950 Deferred Inflows of Resources

Fund Balances

0810 Nonspendable Fund Balance		2,279
0820 Restricted Fund Balance		9,813,987
0830 Committed Fund Balance		
0840 Assigned Fund Balance		
0850 Unassigned Fund Balance		

Total Fund Balances	\$9,816,266
----------------------------	--------------------

Total Liabilities, Deferred Inflows Of Resources And Fund Balances	\$11,768,793
---	---------------------

Amounts Expressed in Whole Dollars

Total Governmental Funds

Liabilities And Deferred Inflows Of Resources And Fund Balances

Liabilities

0400 Due to Other Funds	9,030,666
0411 Due to Other Governments	
0412 Due to Primary Government	
0413 Due to Component Unit	
0420 Accounts Payable	3,532,920
0430 Contracts Payable	568,128
0440 Current Portion of Long-Term Debt	
0450 Short-Term Payables	
0461 Accrued Salaries and Benefits	8,174,138
0462 Payroll Deductions and Withholding	344,854
0480 Unearned Revenues	443,897
0490 Other Current Liabilities	185,134

Total Liabilities \$22,279,737

0950 Deferred Inflows of Resources	883,017
------------------------------------	---------

Fund Balances

0810 Nonspendable Fund Balance	26,301
0820 Restricted Fund Balance	9,813,987
0830 Committed Fund Balance	5,998,719
0840 Assigned Fund Balance	16,506,999
0850 Unassigned Fund Balance	8,535,928

Total Fund Balances \$40,881,934

Total Liabilities, Deferred Inflows Of Resources And Fund Balances \$64,044,688

Amounts Expressed in Whole Dollars	<u>General Fund</u> <u>(10)</u>	<u>Student Sponsored</u> <u>Activity Fund</u> <u>(21)</u>	<u>Public Purpose Trust</u> <u>(27)</u>	<u>Other Compt Approved</u> <u>(28)</u>	<u>Athletic / Activity</u> <u>(29)</u>
Revenues					
6000 Revenue from Local Sources	72,994,441				
7000 Revenue from State Sources	37,908,795				
8000 Revenue from Federal Sources	1,381,529				
Total Revenues	\$112,284,765				
Expenditures					
1000 Instruction	63,087,341				
2000 Support Services	31,373,834				
3000 Operation of Non-Instructional Services	1,727,482				
4000 Facilities Acquisition, Construction and Improvement Services					
5110 Debt Service	8,880,125				
5130 Refund of Prior Year Revenues / Receipts					
5140 Leases and Other Right-to-Use Arrangements	143,642				
Total Expenditures	\$105,212,424				
Excess (Deficiency) Of Revenues Over Expenditures	\$7,072,341				
Other Financing Sources (Uses)					
9110 Face Value of Bonds Issued					
9120 Proceeds from Refunding of Bonds					
9130 Bond Premiums					
9200 Proceeds from Extended Term Financing, Leases, and Other Right-to-Use Arrangements					
9300 Interfund Transfers - IN					
9400 Sale of or Compensation for Loss of Fixed Assets	4,833				
9710 Transfers from Component Units					
9720 Transfers from Primary Governments					
9910 Other Financing Sources Not Listed in the 9000 Series					
9990 Insurance Recoveries	20,000				
5120 Debt Service – Refunded Bonds					
5150 Bond Discounts					
5200 Interfund Transfers – Out	7,097,174				
5300 Transfers Out to Component Units/Primary Governments					
Total Other Financing Sources (Uses)	(\$7,072,341)				

Amounts Expressed in Whole Dollars	<u>Capital Reserve (690.1850)</u> <u>(31)</u>	<u>Capital Reserve (1431)</u> <u>(32)</u>	<u>Other Capital Projects</u> <u>Fund</u> <u>(39)</u>	<u>Debt Service</u> <u>(40)</u>	<u>Permanent</u> <u>(90)</u>
Revenues					
6000 Revenue from Local Sources			524,311		
7000 Revenue from State Sources					
8000 Revenue from Federal Sources					
Total Revenues			\$524,311		
Expenditures					
1000 Instruction					
2000 Support Services			1,180,408		
3000 Operation of Non-Instructional Services					
4000 Facilities Acquisition, Construction and Improvement Services			4,700,790		
5110 Debt Service					
5130 Refund of Prior Year Revenues / Receipts					
5140 Leases and Other Right-to-Use Arrangements					
Total Expenditures			\$5,881,198		
Excess (Deficiency) Of Revenues Over Expenditures			(\$5,356,887)		
Other Financing Sources (Uses)					
9110 Face Value of Bonds Issued					
9120 Proceeds from Refunding of Bonds					
9130 Bond Premiums					
9200 Proceeds from Extended Term Financing, Leases, and Other Right-to-Use Arrangements					
9300 Interfund Transfers - IN			7,097,174		
9400 Sale of or Compensation for Loss of Fixed Assets					
9710 Transfers from Component Units					
9720 Transfers from Primary Governments					
9910 Other Financing Sources Not Listed in the 9000 Series					
9990 Insurance Recoveries			199,000		
5120 Debt Service – Refunded Bonds					
5150 Bond Discounts					
5200 Interfund Transfers – Out					
5300 Transfers Out to Component Units/Primary Governments					
Total Other Financing Sources (Uses)			\$7,296,174		

Amounts Expressed in Whole Dollars	<u>Total Governmental Funds</u>
Revenues	
6000 Revenue from Local Sources	73,518,752
7000 Revenue from State Sources	37,908,795
8000 Revenue from Federal Sources	1,381,529
Total Revenues	\$112,809,076
Expenditures	
1000 Instruction	63,087,341
2000 Support Services	32,554,242
3000 Operation of Non-Instructional Services	1,727,482
4000 Facilities Acquisition, Construction and Improvement Services	4,700,790
5110 Debt Service	8,880,125
5130 Refund of Prior Year Revenues / Receipts	
5140 Leases and Other Right-to-Use Arrangements	143,642
Total Expenditures	\$111,093,622
Excess (Deficiency) Of Revenues Over Expenditures	\$1,715,454
Other Financing Sources (Uses)	
9110 Face Value of Bonds Issued	
9120 Proceeds from Refunding of Bonds	
9130 Bond Premiums	
9200 Proceeds from Extended Term Financing, Leases, and Other Right-to-Use Arrangements	
9300 Interfund Transfers - IN	7,097,174
9400 Sale of or Compensation for Loss of Fixed Assets	4,833
9710 Transfers from Component Units	
9720 Transfers from Primary Governments	
9910 Other Financing Sources Not Listed in the 9000 Series	
9990 Insurance Recoveries	219,000
5120 Debt Service – Refunded Bonds	
5150 Bond Discounts	
5200 Interfund Transfers – Out	7,097,174
5300 Transfers Out to Component Units/Primary Governments	
Total Other Financing Sources (Uses)	\$223,833

Amounts Expressed in Whole Dollars	<u>General Fund</u> <u>(10)</u>	<u>Student Sponsored</u> <u>Activity Fund</u> <u>(21)</u>	<u>Public Purpose Trust</u> <u>(27)</u>	<u>Other Compt Approved</u> <u>(28)</u>	<u>Athletic / Activity</u> <u>(29)</u>
Special And Extraordinary Items					
9920 Special Items – Gains					
9930 Extraordinary Items – Gains					
5520 Special Items – Losses					
5530 Extraordinary Items – Losses					
Net Change In Fund Balances					
Fund Balance					
0001 Fund Balance - Beginning of Fiscal Year	31,065,668				
Fund Balance - End Of Year	\$31,065,668				

Amounts Expressed in Whole Dollars	<u>Capital Reserve (690.</u> <u>1850</u> <u>(31)</u>	<u>Capital Reserve (1431)</u> <u>(32)</u>	<u>Other Capital Projects</u> <u>Fund</u> <u>(39)</u>	<u>Debt Service</u> <u>(40)</u>	<u>Permanent</u> <u>(90)</u>
Special And Extraordinary Items					
9920 Special Items – Gains					
9930 Extraordinary Items – Gains					
5520 Special Items – Losses					
5530 Extraordinary Items – Losses					
Net Change In Fund Balances			\$1,939,287		
Fund Balance					
0001 Fund Balance - Beginning of Fiscal Year			7,876,979		
Fund Balance - End Of Year			\$9,816,266		

Amounts Expressed in Whole Dollars	<u>Total Governmental Funds</u>
Special And Extraordinary Items	
9920 Special Items – Gains	
9930 Extraordinary Items – Gains	
5520 Special Items – Losses	
5530 Extraordinary Items – Losses	
Net Change In Fund Balances	\$1,939,287
Fund Balance	
0001 Fund Balance - Beginning of Fiscal Year	38,942,647
Fund Balance - End Of Year	\$40,881,934

Amounts Expressed in Whole Dollars	<u>Food Service</u> <u>(51)</u>	<u>Child Care</u> <u>Operations</u> <u>(52)</u>	<u>Other Enterprise</u> <u>(58)</u>	<u>TOTAL</u>	<u>Internal Service</u> <u>(60)</u>
Assets And Deferred Outflows Of Resources					
Current Assets					
0100 Cash and Cash Equivalents	46,817			46,817	
0110 Investments	1,683,598			1,683,598	2,041,774
0130 Due From Other Funds					4,093,828
0141 Due From Other Governments					
0142 State Revenue Receivable	41,374			41,374	
0143 Federal Revenue Receivable	179,218			179,218	
0146 Due from Primary Government					
0147 Due from Component Unit					
0150 Other Receivables	40,953			40,953	
0170 Inventories	91,044			91,044	
0180 Prepaid Expenses (Expenditures)					
0190 Other Current Assets					227,000
Total Current Assets	\$2,083,004			\$2,083,004	\$6,362,602
Noncurrent Assets					
0211 Land					
0212 Site Improvements (Net)					
0220 Buildings and Building Improvements (Net)					
0230 Tangible Property and Intangible Right-To-Use Assets (Net)	258,615			258,615	
0250 Construction in Progress					
0260 Long Term Prepayments					
0290 Other Noncurrent Assets					
Total Noncurrent Assets	\$258,615			\$258,615	
0910 Deferred Outflows of Resources	366,788			366,788	
Total Assets And Deferred Outflows Of Resources	\$2,708,407			\$2,708,407	\$6,362,602

Amounts Expressed in Whole Dollars	<u>Food Service</u> <u>(51)</u>	<u>Child Care</u> <u>Operations</u> <u>(52)</u>	<u>Other Enterprise</u> <u>(58)</u>	<u>TOTAL</u>	<u>Internal Service</u> <u>(60)</u>
Liabilities And Deferred Inflows Of Resources And Net Position					
Current Liabilities					
0400 Due to Other Funds	4,549			4,549	
0411 Due to Other Governments					
0413 Due to Component Unit					
0420 Accounts Payable	9,495			9,495	734,011
0430 Contracts Payable					
0440 Current Portion of Long-Term Debt					
0450 Short-Term Payables					
0461 Accrued Salaries and Benefits	10,280			10,280	
0462 Payroll Deductions and Withholding					
0480 Unearned Revenues	165,713			165,713	
0490 Other Current Liabilities					
Total Current Liabilities	\$190,037			\$190,037	\$734,011
Noncurrent Liabilities					
0510 Bonds Payable					
0520 Extended-Term Financing Agreements Payable					
0530 Lease and Other Right-To-Use Obligations					
0540 Accumulated Compensated Absences	52,018			52,018	
0550 Authority Lease Obligations					
0560 Other Post-Employment Benefits (OPEB)	76,743			76,743	
0570 Net Pension Liability	1,881,704			1,881,704	
0599 Other Noncurrent Liabilities					
Total Noncurrent Liabilities	\$2,010,465			\$2,010,465	
Total Liabilities	\$2,200,502			\$2,200,502	\$734,011
0950 Deferred Inflows of Resources	45,145			45,145	
Net Position					
0791 Net Investment in Capital Assets	258,615			258,615	
0008 Restricted Net Position (0792 – 0798)					
0799 Unrestricted Net Position	204,145			204,145	5,628,591
Total Net Position	\$462,760			\$462,760	\$5,628,591
Total Liabilities And Deferred Inflows Of Resources And Net Position	\$2,708,407			\$2,708,407	\$6,362,602

Amounts Expressed in Whole Dollars	<u>Food Service</u> <u>(51)</u>	<u>Child Care Operations</u> <u>(52)</u>	<u>Other Enterprise</u> <u>(58)</u>	<u>TOTAL</u>	<u>Internal Service</u> <u>(60)</u>
Operating Revenues					
6600 Food Service Revenue	1,049,991			1,049,991	
0071 Charges for Services					7,303,871
0072 Other Operating Revenue					
Total Operating Revenues	\$1,049,991			\$1,049,991	\$7,303,871
Operating Expenses					
100 Personnel Services – Salaries	807,039			807,039	
200 Personnel Services – Employee Benefits	469,233			469,233	7,241,470
300 Purchased Professional and Technical Services	3,257			3,257	
400 Purchased Property Services	30,037			30,037	
500 Other Purchased Services	3,545			3,545	
600 Supplies	1,456,523			1,456,523	
740 Depreciation	19,898			19,898	
770 Amortization Expense					
810 Dues and Fees	505			505	
880 Refunds of Prior Years' Receipts					
890 Miscellaneous Expenditures					
Total Operating Expenses	\$2,790,037			\$2,790,037	\$7,241,470
Operating Income (Loss)	(\$1,740,046)			(\$1,740,046)	\$62,401
Non Operating Revenues (Expenses)					
6500 Earnings on Investments	76,881			76,881	107,575
6830 Federal Revenue from Intermediary Sources					
6920 Contributions and Donations from Private Sources	10,535			10,535	
6930 Gains or Losses on Sale of Fixed Assets	900			900	
6991 Refunds of a Prior Year Expenditure					27,168
7000 Revenue from State Sources	423,092			423,092	
8000 Revenue from Federal Sources	1,530,464			1,530,464	
9990 Insurance Recoveries					
820 Claims and Judgments Against the LEA					
830 Interest					
TOTAL Non Operating Revenues (Expenses)	\$2,041,872			\$2,041,872	\$134,743
Income (Loss) Before Contributions And Transfers	\$301,826			\$301,826	\$197,144

Amounts Expressed in Whole Dollars	<u>Food Service</u> <u>(51)</u>	<u>Child Care Operations</u> <u>(52)</u>	<u>Other Enterprise</u> <u>(58)</u>	<u>TOTAL</u>	<u>Internal Service</u> <u>(60)</u>
Contributions, Transfers, and Special and Extraordinary Items					
5200 Interfund Transfers – Out					
5300 Transfers Out to Component Units/Primary Governments					
5520 Special Items – Losses					
5530 Extraordinary Items – Losses					
9300 Interfund Transfers - IN					
9500 Capital Contributions					
9700 Transfers IN From Component Units/Primary Governments					
9920 Special Items – Gains					
9930 Extraordinary Items – Gains					
Change In Net Position	\$301,826			\$301,826	\$197,144
0002 Net Position - Beginning of Fiscal Year	160,934			160,934	5,431,447
0003 Accounting Changes / Residual Equity Transfers					
Net Position - End Of Year	\$462,760			\$462,760	\$5,628,591

LEA : 124150503 Avon Grove SD

Printed 11/11/2024 9:36:20 AM

Amounts Expressed in Whole Dollars	<u>Food Service</u> <u>(51)</u>	<u>Child Care Operations</u> <u>(52)</u>	<u>Other Enterprise</u> <u>(58)</u>	<u>TOTAL</u>	<u>Internal Service(60)</u>
Cash Flows From Operating Activities					
0011 Cash Receipts From Users	1,033,993			1,033,993	7,000,001
0012 Cash Receipts From Assessments Made to Other Funds					
0013 Cash Receipts From Earnings on Investments					
0014 Cash Receipts From Other Operating Revenue					
0015 Cash Payments To Employees For Services	1,355,065			1,355,065	
0016 Cash Payments For Insurance Claims					7,211,851
0017 Cash Payments To Suppliers For Goods and Services	1,222,986			1,222,986	
0018 Cash Payments For Other Operating Expenses					
Net Cash Provided By (Used For) Operating Activities	(\$1,544,058)			(\$1,544,058)	(\$211,850)
Cash Flows From Non-Capital Financing Activities					
0021 Receipts From Local Sources - 6000	10,535			10,535	
0022 Receipts From State Sources - 7000	420,780			420,780	
0023 Receipts From Federal Sources -8000	1,301,299			1,301,299	
0024 Notes and Loans Received (Repaid)					
0025 Interest Paid on Notes/Loans - 5100-830					
0026 Operating Transfers In (Out)/Residual Equity Trans					
0027 Operating Transfers In (Out) Primary Government / Comp Unit					
0028 Receipts From Refund of Prior Year Expenditures - 6991					27,168
0029 Special and Extraordinary Gains (losses)					
0030 Receipts from Insurance Recoveries -9990					
Net Cash Prov By (Used for) Non-Capital Financing Activities	\$1,732,614			\$1,732,614	\$27,168
Cash Flows From Capital and Related Financing Activities					
0031 Payments For Fac Acq, Const, and Imp - 4000	(237,907)			(237,907)	
0032 Proceeds from Disposal of Capital Assets	900			900	
0033 Proceeds From Extended Term Financing - 9200					
0034 Principal Paid on Financing Agreements					
0035 Interest Paid on Financing Agreements - 5100-830					
0036 (Inc) Dec in Contributed Capital					
Net Cash Prov By (Used for) Capital and Related Financing Activities	(\$237,007)			(\$237,007)	
Cash Flows From Investing Activities					
0041 Earnings on Investments - 6500	76,881			76,881	107,575
0042 Purchase of Inv Securities / Deposits to Inv Pools	(159,483)			(159,483)	
0043 Receipts From Investment Pool Withdrawals					77,107
0044 Proceeds from Sale and Maturity of Inv Securities					

LEA : 124150503 Avon Grove SD

Printed 11/11/2024 9:36:20 AM

0045 Loans Received (Paid)

Net Cash Prov By (Used for) Investing Activities	(\$82,602)	(\$82,602)	\$184,682
---	-------------------	-------------------	------------------

	<u>Food Service</u> <u>(51)</u>	<u>Child Care Operations</u> <u>(52)</u>	<u>Other Enterprise</u> <u>(58)</u>	<u>TOTAL</u>	<u>Internal Service</u> <u>(60)</u>
Net Increase (Decrease) in Cash Flows	(131,053)			(131,053)	
0004 Cash and Cash Equivalents Beginning of Year	177,870			177,870	
Cash and Cash Equivalents at Year End	\$46,817			\$46,817	
<hr/>					
Reconciliation of Operating Income (Loss) To Net Cash Provided by (Used For) Operating Activities					
0005 Operating Income (Loss) per REP	(1,740,046)			(1,740,046)	62,401
Adjustments					
0051 Depreciation and Net Amortization	19,898			19,898	
0052 Provision for Uncollectible Accounts					
0053 Other Adjustments	260,747			260,747	
Effect of Changes in Assets, Liabilities, Deferred Outflows and Deferred Inflows					
0054 (Inc) Dec In Accounts Receivable (0120-0150)	(23,426)			(23,426)	
0055 Advances to Other Funds	(58,329)			(58,329)	(303,870)
0056 (Inc) Dec in Inventories (0170)	11,298			11,298	
0057 (Inc) Dec in Prepaid Expenses (0180)					
0058 (Inc) Dec in Other Current or Noncurrent Assets					(65,000)
0064 Deferred Outflows (0910)	(28,330)			(28,330)	
0059 Inc (Dec) in Accounts Payable (0400-0450)	(1,164)			(1,164)	94,619
0060 Inc (Dec) in Accrued Salaries/Benefits (0461)	3,129			3,129	
0065 Inc (Dec) in Net Pension Liabilities (0570)	40,396			40,396	
0066 Inc (Dec) in Other Postemp Benefit Oblig (0560)	312			312	
0061 Inc (Dec) in Payroll Deductions/Withholding (0462)					
0062 Inc (Dec) in Unearned Revenue (0480)	7,428			7,428	
0063 Inc (Dec) in Other Current or Noncurrent Liabilities	3,966			3,966	
0067 Deferred Inflows (0950)	(39,937)			(39,937)	
Total Adjustments	\$195,988			\$195,988	(\$274,251)
Cash Provided By (Used for) Total	(\$1,544,058)			(\$1,544,058)	(\$211,850)

COMBINED STATEMENT OF CASH FLOWS
SCHEDULE OF NONCASH INVESTING, CAPITAL, AND FINANCING ACTIVITIES

Explanation of Transaction and Balance Sheet Effect	Amount
USDA Donated Commodities	260,747
Total	\$260,747

LEA : 124150503 Avon Grove SD

Printed 11/11/2024 9:36:21 AM

Amounts Expressed in Whole Dollars

Private Purpose Trust
(71)

Investment Trust
(72)

Pension Trust
(73)

Student Activity Custodial
(81)

Assets And Deferred Outflows Of Resources

Assets

0100 Cash and Cash Equivalents				139,344
0110 Investments				
0130 Due From Other Funds				
0140 Due from Other Governments, Primary Government and Component Units				
0150 Other Receivables				490
0170 Inventories				
0180 Prepaid Expenses (Expenditures)				
0190 Other Current Assets				
0220 Buildings and Building Improvements (Net)				
0230 Tangible Property and Intangible Right-To-Use Assets (Net)				

Total Assets **\$139,834**

0910 Deferred Outflows of Resources

Total Assets And Deferred Outflows Of Resources **\$139,834**

LEA : 124150503 Avon Grove SD

Printed 11/11/2024 9:36:21 AM

Amounts Expressed in Whole Dollars	<u>Other Custodial</u> <u>(89)</u>	<u>Fiduciary Component Units</u> <u>(98)</u>	<u>Total Fiduciary Funds</u>
Assets And Deferred Outflows Of Resources			
Assets			
0100 Cash and Cash Equivalents			139,344
0110 Investments			
0130 Due From Other Funds			
0140 Due from Other Governments, Primary Government and Component Units			
0150 Other Receivables			490
0170 Inventories			
0180 Prepaid Expenses (Expenditures)			
0190 Other Current Assets			
0220 Buildings and Building Improvements (Net)			
0230 Tangible Property and Intangible Right-To-Use Assets (Net)			
Total Assets			\$139,834
0910 Deferred Outflows of Resources			
Total Assets And Deferred Outflows Of Resources			\$139,834

LEA : 124150503 Avon Grove SD

Printed 11/11/2024 9:36:21 AM

Amounts Expressed in Whole Dollars	<u>Private Purpose Trust</u> (71)	<u>Investment Trust</u> (72)	<u>Pension Trust</u> (73)	<u>Student Activity Custodial</u> (81)
Liabilities, Deferred Inflows Of Resources And Net Position				
Liabilities				
0400 Due to Other Funds				
0410 Due to Other Governments, Primary Government and Component Units				
0420 Accounts Payable				132
0430 Contracts Payable				
0450 Short-Term Payables				
0460 Payroll Accruals and Withholdings				
0480 Unearned Revenues				
0490 Other Current Liabilities				
Total Liabilities				\$132
0950 Deferred Inflows of Resources				
Net Position				
0791 Net Investment in Capital Assets				
0009 Restricted Net Position (0792 – 0798)				
0799 Unrestricted Net Position				139,702
Total Net Position				\$139,702
Total Liabilities, Deferred Inflows Of Resources And Net Position				\$139,834

LEA : 124150503 Avon Grove SD

Printed 11/11/2024 9:36:21 AM

Amounts Expressed in Whole Dollars	<u>Other Custodial</u> <u>(89)</u>	<u>Fiduciary Component Units</u> <u>(98)</u>	<u>Total Fiduciary Funds</u>
Liabilities, Deferred Inflows Of Resources And Net Position			
Liabilities			
0400 Due to Other Funds			
0410 Due to Other Governments, Primary Government and Component Units			
0420 Accounts Payable			132
0430 Contracts Payable			
0450 Short-Term Payables			
0460 Payroll Accruals and Withholdings			
0480 Unearned Revenues			
0490 Other Current Liabilities			
Total Liabilities			\$132
0950 Deferred Inflows of Resources			
Net Position			
0791 Net Investment in Capital Assets			
0009 Restricted Net Position (0792 – 0798)			
0799 Unrestricted Net Position			139,702
Total Net Position			\$139,702
Total Liabilities, Deferred Inflows Of Resources And Net Position			\$139,834

Amounts Expressed in Whole Dollars	<u>Private Purpose Trust</u> (71)	<u>Investment Trust</u> (72)	<u>Pension Trust</u> (73)	<u>Student Activity</u> <u>Custodial</u> (81)	<u>Other Custodial</u> (89)	<u>Fiduciary Component</u> <u>Units</u> (98)
Additions						
0091 Gifts and Contributions						
0095 Net Investment Earnings						
0092 Other Additions				166,665		
Deductions						
0093 Scholarships Awarded				1,350		
0094 Other Deductions				187,781		
Change In Net Position				(\$22,466)		
0006 Net Position – Beginning of Fiscal Year				162,168		
0007 Net Position Held in Trust for Pension Benefits						
Net Position - End of Fiscal Year				\$139,702		

Amounts Expressed in Whole Dollars	<u>Total Fiduciary Funds</u>
Additions	
0091 Gifts and Contributions	
0095 Net Investment Earnings	
0092 Other Additions	166,665
Deductions	
0093 Scholarships Awarded	1,350
0094 Other Deductions	187,781
Change in Net Position	(\$22,466)
0006 Net Position – Beginning of Fiscal Year	162,168
0007 Net Position Held in Trust for Pension Benefits	
Net Position - End of Fiscal Year	\$139,702

	<u>Revenue Reported In Current Year</u>	<u>Current Year Tax Accrual</u>	<u>Prior Year Tax Accrual</u>	<u>Taxes Collected In Current Year</u>
<u>Revenue from Local Sources</u>				
6111 Current Real Estate Taxes	65,555,876.59			65,555,876.59
6112 Interim Real Estate Taxes	319,665.08			319,665.08
6113 Public Utility Realty Taxes	56,487.40			56,487.40
6153 Current Act 511 Real Estate Transfer Taxes	964,577.11			964,577.11
6411 Delinquent Real Estate Taxes	1,217,732.80	807,092.01	755,023.12	1,165,663.91
6412 Delinquent Interim Real Estate Taxes	53,242.78			53,242.78
6500 Earnings on Investments	3,131,660.22			
6700 Revenues from LEA Activities	754,285.69			
6832 Federal IDEA Revenue Received as Pass Through	574,045.07			
6910 Rentals	114,706.80			
6920 Contributions and Donations from Private Sources	102,898.68			
6944 Receipts from Other LEAs in Pennsylvania - Education	120,000.00			
6991 Refunds of a Prior Year Expenditure	3,696.23			
6992 Energy Efficiency Revenues and Incentives	10,213.42			
6999 Other Revenues Not Specified Above	15,353.09			
TOTAL Revenue from Local Sources	\$72,994,440.96	\$807,092.01	\$755,023.12	\$68,115,512.87

**Revenue Reported
In Current Year**

Revenue from State Sources

7111 Basic Education Funding-Formula	17,398,704.34		
7160 Tuition for Orphans Subsidy	14,256.63		
7250 Migratory Children	2,051.00		
7271 Special Education funds for School-Aged Pupils	3,422,604.72		
7299 Program Revenues Not Listed Previously in the 7200 Series	5,891.01		
7311 Pupil Transportation Subsidy	2,051,440.58		
7312 Nonpublic and Charter School Pupil Transportation Subsidy	248,325.00		
7320 Rental and Sinking Fund Payments / Building Reimbursement Subsidy	1,158,244.88		
7330 Health Services (Medical, Dental, Nurse, Act 25)	105,320.80		
7340 State Property Tax Reduction Allocation	3,370,140.32		
7362 School Mental Health & Safety and Security Grants	348,683.41		
7505 Ready to Learn Block Grant	754,726.00		
7810 State Share of Social Security and Medicare Taxes	1,627,274.92		
7820 State Share of Retirement Contributions	7,401,131.19		
TOTAL Revenue from State Sources	\$37,908,794.80		

**Revenue Reported
In Current Year**

Revenue from Federal Sources

8514 Title I - Improving the Academic Achievement of the Disadvantaged	518,091.06			
8515 Title II - Preparing, Training, and Recruiting High Quality Teachers and Principals	93,017.94			
8516 Title III - Language Instruction for English Learners and Immigrant Students	92,351.54			
8517 Title IV - 21st Century Schools	37,056.12			
8744 ARP ESSER - Elementary and Secondary School Emergency Relief Fund	118,967.03			
8751 ARP ESSER Learning Loss	16,140.71			
8752 ARP ESSER Summer Programs	15,000.00			
8810 School-Based Access Medicaid Reimbursement Program (SBAP) Reimbursements (Access)	487,819.04			
8820 Medical Assistance Reimbursement for Administrative Claiming (Quarterly) Program	3,085.27			
TOTAL Revenue from Federal Sources	\$1,381,528.71			

	Revenue Reported In Current Year			
Other Financing Sources				
9400 Sale of or Compensation for Loss of Fixed Assets	4,833.00			
9990 Insurance Recoveries	20,000.00			
TOTAL Other Financing Sources	\$24,833.00			
TOTAL FROM ALL SOURCES	\$112,309,597.47	\$807,092.01	\$755,023.12	\$68,115,512.87

LEA : 124150503 Avon Grove SD

Printed 11/11/2024 9:36:28 AM

	<u>General Fund (10)</u>	<u>Student Sponsored Activity Fund (21)</u>	<u>Public Purpose Trust (27)</u>	<u>Other Compt Approved (28)</u>	<u>Athletic / Activity (29)</u>	<u>Capital Reserve (690, 1850) (31)</u>
6000 Revenue from Local Sources						
6111 Current Real Estate Taxes	65,555,876.59					
6112 Interim Real Estate Taxes	319,665.08					
6113 Public Utility Realty Taxes	56,487.40					
6153 Current Act 511 Real Estate Transfer Taxes	964,577.11					
6411 Delinquent Real Estate Taxes	1,217,732.80					
6412 Delinquent Interim Real Estate Taxes	53,242.78					
6500 Earnings on Investments	3,131,660.22					
6700 Revenues from LEA Activities	754,285.69					
6832 Federal IDEA Revenue Received as Pass Through	574,045.07					
6910 Rentals	114,706.80					
6920 Contributions and Donations from Private Sources	102,898.68					
6944 Receipts from Other LEAs in Pennsylvania - Education	120,000.00					
6991 Refunds of a Prior Year Expenditure	3,696.23					
6992 Energy Efficiency Revenues and Incentives	10,213.42					
6999 Other Revenues Not Specified Above	15,353.09					
6000 Total Revenue from Local Sources	\$72,994,440.96					
7000 Revenue from State Sources						
7111 Basic Education Funding-Formula	17,398,704.34					
7160 Tuition for Orphans Subsidy	14,256.63					
7250 Migratory Children	2,051.00					
7271 Special Education funds for School-Aged Pupils	3,422,604.72					
7299 Program Revenues Not Listed Previously in the 7200 Series	5,891.01					
7311 Pupil Transportation Subsidy	2,051,440.58					
7312 Nonpublic and Charter School Pupil Transportation Subsidy	248,325.00					
7320 Rental and Sinking Fund Payments / Building Reimbursement Subsidy	1,158,244.88					
7330 Health Services (Medical, Dental, Nurse, Act 25)	105,320.80					
7340 State Property Tax Reduction Allocation	3,370,140.32					
7362 School Mental Health & Safety and Security Grants	348,683.41					
7505 Ready to Learn Block Grant	754,726.00					
7810 State Share of Social Security and Medicare Taxes	1,627,274.92					
7820 State Share of Retirement Contributions	7,401,131.19					
7000 Total Revenue from State Sources	\$37,908,794.80					
8000 Revenue from Federal Sources						
8514 Title I - Improving the Academic Achievement of the Disadvantaged	518,091.06					

LEA : 124150503 Avon Grove SD

Printed 11/11/2024 9:36:28 AM

	<u>Capital Reserve</u> <u>(1431) (32)</u>	<u>Other Capital</u> <u>Projects Fund (39)</u>	<u>Debt Service (40)</u>	<u>Permanent (90)</u>	<u>Total</u>
6000 Revenue from Local Sources					
6111 Current Real Estate Taxes					65,555,876.59
6112 Interim Real Estate Taxes					319,665.08
6113 Public Utility Realty Taxes					56,487.40
6153 Current Act 511 Real Estate Transfer Taxes					964,577.11
6411 Delinquent Real Estate Taxes					1,217,732.80
6412 Delinquent Interim Real Estate Taxes					53,242.78
6500 Earnings on Investments		389,426.27			3,521,086.49
6700 Revenues from LEA Activities					754,285.69
6832 Federal IDEA Revenue Received as Pass Through					574,045.07
6910 Rentals					114,706.80
6920 Contributions and Donations from Private Sources					102,898.68
6944 Receipts from Other LEAs in Pennsylvania - Education					120,000.00
6991 Refunds of a Prior Year Expenditure					3,696.23
6992 Energy Efficiency Revenues and Incentives		114,884.88			125,098.30
6999 Other Revenues Not Specified Above		20,000.00			35,353.09
6000 Total Revenue from Local Sources		\$524,311.15			\$73,518,752.11
7000 Revenue from State Sources					
7111 Basic Education Funding-Formula					17,398,704.34
7160 Tuition for Orphans Subsidy					14,256.63
7250 Migratory Children					2,051.00
7271 Special Education funds for School-Aged Pupils					3,422,604.72
7299 Program Revenues Not Listed Previously in the 7200 Series					5,891.01
7311 Pupil Transportation Subsidy					2,051,440.58
7312 Nonpublic and Charter School Pupil Transportation Subsidy					248,325.00
7320 Rental and Sinking Fund Payments / Building Reimbursement Subsidy					1,158,244.88
7330 Health Services (Medical, Dental, Nurse, Act 25)					105,320.80
7340 State Property Tax Reduction Allocation					3,370,140.32
7362 School Mental Health & Safety and Security Grants					348,683.41
7505 Ready to Learn Block Grant					754,726.00
7810 State Share of Social Security and Medicare Taxes					1,627,274.92
7820 State Share of Retirement Contributions					7,401,131.19
7000 Total Revenue from State Sources					\$37,908,794.80
8000 Revenue from Federal Sources					
8514 Title I - Improving the Academic Achievement of the Disadvantaged					518,091.06

	<u>General Fund (10)</u>	<u>Student Sponsored Activity Fund (21)</u>	<u>Public Purpose Trust (27)</u>	<u>Other Compt Approved (28)</u>	<u>Athletic / Activity (29)</u>	<u>Capital Reserve (690, 1850) (31)</u>
8000 Revenue from Federal Sources						
8515 Title II - Preparing, Training, and Recruiting High Quality Teachers and Principals	93,017.94					
8516 Title III - Language Instruction for English Learners and Immigrant Students	92,351.54					
8517 Title IV - 21st Century Schools	37,056.12					
8744 ARP ESSER - Elementary and Secondary School Emergency Relief Fund	118,967.03					
8751 ARP ESSER Learning Loss	16,140.71					
8752 ARP ESSER Summer Programs	15,000.00					
8810 School-Based Access Medicaid Reimbursement Program (SBAP) Reimbursements (Access)	487,819.04					
8820 Medical Assistance Reimbursement for Administrative Claiming (Quarterly) Program	3,085.27					
8000 Total Revenue from Federal Sources	\$1,381,528.71					
9000 Other Financing Sources						
9310 General Fund Transfers						
9400 Sale of or Compensation for Loss of Fixed Assets	4,833.00					
9990 Insurance Recoveries	20,000.00					
9000 Total Other Financing Sources	\$24,833.00					
Total From All Sources	\$112,309,597.47					

	<u>Capital Reserve</u> <u>(1431) (32)</u>	<u>Other Capital</u> <u>Projects Fund (39)</u>	<u>Debt Service (40)</u>	<u>Permanent (90)</u>	<u>Total</u>
8000 Revenue from Federal Sources					
8515 Title II - Preparing, Training, and Recruiting High Quality Teachers and Principals					93,017.94
8516 Title III - Language Instruction for English Learners and Immigrant Students					92,351.54
8517 Title IV - 21st Century Schools					37,056.12
8744 ARP ESSER - Elementary and Secondary School Emergency Relief Fund					118,967.03
8751 ARP ESSER Learning Loss					16,140.71
8752 ARP ESSER Summer Programs					15,000.00
8810 School-Based Access Medicaid Reimbursement Program (SBAP) Reimbursements (Access)					487,819.04
8820 Medical Assistance Reimbursement for Administrative Claiming (Quarterly) Program					3,085.27
8000 Total Revenue from Federal Sources					\$1,381,528.71
9000 Other Financing Sources					
9310 General Fund Transfers		7,097,173.75			7,097,173.75
9400 Sale of or Compensation for Loss of Fixed Assets					4,833.00
9990 Insurance Recoveries		199,000.00			219,000.00
9000 Total Other Financing Sources		\$7,296,173.75			\$7,321,006.75
Total From All Sources		\$7,820,484.90			\$120,130,082.37

	<u>General Fund (10)</u>	<u>Student Sponsored Activity Fund (21)</u>	<u>Public Purpose Trust (27)</u>	<u>Other Compt Approved (28)</u>	<u>Athletic / Activity (29)</u>	<u>Capital Reserve (690. 1850) (31)</u>
Revenue from Local Sources	72,994,440.96					
Revenue from State Sources	37,908,794.80					
Revenue from Federal Sources	1,381,528.71					
Other Financing Sources	24,833.00					
Total From All Sources	\$112,309,597.47					

	<u>Capital Reserve (1431)</u> <u>(32)</u>	<u>Other Capital Projects</u> <u>Fund (39)</u>	<u>Debt Service (40)</u>	<u>Permanent (90)</u>	<u>Total</u>
Revenue from Local Sources		524,311.15			73,518,752.11
Revenue from State Sources					37,908,794.80
Revenue from Federal Sources					1,381,528.71
Other Financing Sources		7,296,173.75			7,321,006.75
Total From All Sources		\$7,820,484.90			\$120,130,082.37

General Fund (10)

	<u>Total</u>
1000 Instruction	
100 Personnel Services – Salaries	
100 Personnel Services – Salaries	26,616,933.63
Total Personnel Services – Salaries	\$26,616,933.63
200 Personnel Services – Employee Benefits	
210 Group Insurance – Contracted Provider	66,755.87
220 Social Security Contributions	1,991,952.56
230 PSERS Retirement Contributions	8,988,749.93
250 Unemployment Compensation	1,712.32
260 Workers’ Compensation	56,960.26
270 Group Insurance – Self-Insurance	5,201,384.27
280 Other Post-Employment Benefits (OPEB)	52,716.26
292 Health Savings Accounts	8,165.60
Total Personnel Services – Employee Benefits	\$16,368,397.07
300 Purchased Professional and Technical Services	
322 Professional Educational Services – Ius	6,579,479.21
323 Professional Educational Services – Other Educational Agencies	94,218.73
329 Professional Educational Services – Other	783,904.35
330 Other Professional Services	1,271,274.06
360 Employee Training and Development Services	5,571.19
Total Purchased Professional and Technical Services	\$8,734,447.54
400 Purchased Property Services	
430 Repairs and Maintenance Services	20,263.40
440 Rentals	48,930.98
Total Purchased Property Services	\$69,194.38
500 Other Purchased Services	
510 Student Transportation Services	54,591.22
530 Communications	542.52
550 Printing and Binding	473.60
561 Tuition To Other School Districts Within the State	98,440.88
562 Tuition To Pennsylvania Charter Schools	9,451,466.37
563 Tuition To Nonpublic Schools	340,158.91
564 Tuition To Career and Technology Centers	103,265.29
567 Tuition To Approved Private Schools (APS) and PA Chartered Schools for the Deaf and Blind	307,444.04
568 Tuition To Private Residential Rehabilitative Institutions (PRRI) [In-State] and Detention Centers	7,646.63
580 Travel	9,125.74
594 IU Payment By Withholding for Institutionalized Children’s Programs – Special Classes	4,789.50
Total Other Purchased Services	\$10,377,944.70
600 Supplies	
610 General Supplies	478,902.81
620 Energy	71.95
640 Books and Periodicals	74,061.63
650 Supplies & Fees – Technology Related	215,262.76
Total Supplies	\$768,299.15

General Fund (10)

1000 Instruction	<u>Total</u>
700 Property	
752 Capital Equipment – Original and Additional	19,996.55
Total Property	\$19,996.55
800 Other Objects	
810 Dues and Fees	3,491.50
890 Miscellaneous Expenditures	128,636.32
Total Other Objects	\$132,127.82
Total 1000 Instruction	\$63,087,340.84

General Fund (10)

1100 Regular Programs – Elementary / Secondary

	<u>Elementary</u>	<u>Secondary</u>	<u>Federal</u>	<u>Total</u>
100 Personnel Services – Salaries				
100 Personnel Services – Salaries	9,379,272.75	12,903,765.91	466,783.95	22,749,822.61
Total Personnel Services – Salaries	\$9,379,272.75	\$12,903,765.91	\$466,783.95	\$22,749,822.61
200 Personnel Services – Employee Benefits				
210 Group Insurance – Contracted Provider	24,443.93	32,579.19	1,002.03	58,025.15
220 Social Security Contributions	702,560.32	963,264.28	35,258.68	1,701,083.28
230 PSERS Retirement Contributions	3,238,677.03	4,369,161.89	69,193.78	7,677,032.70
250 Unemployment Compensation	805.96	484.81	190.80	1,481.57
260 Workers' Compensation	21,448.07	26,058.87	1,645.30	49,152.24
270 Group Insurance – Self-Insurance	1,799,248.97	2,584,958.19	55,309.32	4,439,516.48
280 Other Post-Employment Benefits (OPEB)	22,987.70	22,386.30		45,374.00
292 Health Savings Accounts	2,332.80			2,332.80
Total Personnel Services – Employee Benefits	\$5,812,504.78	\$7,998,893.53	\$162,599.91	\$13,973,998.22
300 Purchased Professional and Technical Services				
322 Professional Educational Services – Ius		2,533.54		2,533.54
323 Professional Educational Services – Other Educational Agencies	29.56	61,864.57		61,894.13
329 Professional Educational Services – Other	257,294.05	504,609.16		761,903.21
330 Other Professional Services	12,000.00	12,000.00		24,000.00
Total Purchased Professional and Technical Services	\$269,323.61	\$581,007.27		\$850,330.88
400 Purchased Property Services				
430 Repairs and Maintenance Services	3,323.51	16,939.89		20,263.40
440 Rentals	22,392.69	26,538.29		48,930.98
Total Purchased Property Services	\$25,716.20	\$43,478.18		\$69,194.38
500 Other Purchased Services				
510 Student Transportation Services	15,378.46	36,831.31	331.37	52,541.14
530 Communications	30.45	12.07		42.52
550 Printing and Binding	1.47	472.13		473.60
562 Tuition To Pennsylvania Charter Schools	3,215,879.12	3,215,879.11		6,431,758.23
563 Tuition To Nonpublic Schools		450.00		450.00
568 Tuition To Private Residential Rehabilitative Institutions (PRRI) [In-State] and Detention Centers		4,538.54		4,538.54
Total Other Purchased Services	\$3,231,289.50	\$3,258,183.16	\$331.37	\$6,489,804.03
600 Supplies				
610 General Supplies	115,034.08	318,521.16	6,898.26	440,453.50
620 Energy	0.04	71.91		71.95
640 Books and Periodicals	29,660.95	12,757.97	30,718.72	73,137.64
650 Supplies & Fees – Technology Related	85,095.25	95,171.89		180,267.14
Total Supplies	\$229,790.32	\$426,522.93	\$37,616.98	\$693,930.23
700 Property				
752 Capital Equipment – Original and Additional		19,996.55		19,996.55
Total Property		\$19,996.55		\$19,996.55
800 Other Objects				

LEA : 124150503 Avon Grove SD

Printed 11/11/2024 9:36:32 AM

General Fund (10)

1100 Regular Programs – Elementary / Secondary

800 Other Objects

	<u>Elementary</u>	<u>Secondary</u>	<u>Federal</u>	<u>Total</u>
810 Dues and Fees	147.26	3,344.24		3,491.50
890 Miscellaneous Expenditures	42,860.45	81,721.87		124,582.32
Total Other Objects	\$43,007.71	\$85,066.11		\$128,073.82
Total 1100 Regular Programs – Elementary / Secondary	\$18,990,904.87	\$25,316,913.64	\$667,332.21	\$44,975,150.72

General Fund (10)

1110 Regular Programs

	<u>Elementary</u>	<u>Secondary</u>	<u>Federal</u>	<u>Total</u>
100 Personnel Services – Salaries				
100 Personnel Services – Salaries	9,379,272.75	12,903,765.91		22,283,038.66
Total Personnel Services – Salaries	\$9,379,272.75	\$12,903,765.91		\$22,283,038.66
200 Personnel Services – Employee Benefits				
210 Group Insurance – Contracted Provider	24,443.93	32,579.19		57,023.12
220 Social Security Contributions	702,560.32	963,264.28		1,665,824.60
230 PSERS Retirement Contributions	3,238,677.03	4,369,161.89		7,607,838.92
250 Unemployment Compensation	805.96	484.81		1,290.77
260 Workers' Compensation	21,448.07	26,058.87		47,506.94
270 Group Insurance – Self-Insurance	1,799,248.97	2,584,958.19		4,384,207.16
280 Other Post-Employment Benefits (OPEB)	22,987.70	22,386.30		45,374.00
292 Health Savings Accounts	2,332.80			2,332.80
Total Personnel Services – Employee Benefits	\$5,812,504.78	\$7,998,893.53		\$13,811,398.31
300 Purchased Professional and Technical Services				
322 Professional Educational Services – Ius		2,533.54		2,533.54
323 Professional Educational Services – Other Educational Agencies	29.56	61,864.57		61,894.13
329 Professional Educational Services – Other	257,294.05	504,609.16		761,903.21
330 Other Professional Services	12,000.00	12,000.00		24,000.00
Total Purchased Professional and Technical Services	\$269,323.61	\$581,007.27		\$850,330.88
400 Purchased Property Services				
430 Repairs and Maintenance Services	3,323.51	16,939.89		20,263.40
440 Rentals	22,392.69	26,538.29		48,930.98
Total Purchased Property Services	\$25,716.20	\$43,478.18		\$69,194.38
500 Other Purchased Services				
510 Student Transportation Services	15,378.46	36,831.31		52,209.77
530 Communications	30.45	12.07		42.52
550 Printing and Binding	1.47	472.13		473.60
562 Tuition To Pennsylvania Charter Schools	3,215,879.12	3,215,879.11		6,431,758.23
563 Tuition To Nonpublic Schools		450.00		450.00
568 Tuition To Private Residential Rehabilitative Institutions (PRRI) [In-State] and Detention Centers		4,538.54		4,538.54
Total Other Purchased Services	\$3,231,289.50	\$3,258,183.16		\$6,489,472.66
600 Supplies				
610 General Supplies	115,034.08	318,521.16		433,555.24
620 Energy	0.04	71.91		71.95
640 Books and Periodicals	29,660.95	12,757.97		42,418.92
650 Supplies & Fees – Technology Related	85,095.25	95,171.89		180,267.14
Total Supplies	\$229,790.32	\$426,522.93		\$656,313.25
700 Property				
752 Capital Equipment – Original and Additional		19,996.55		19,996.55
Total Property		\$19,996.55		\$19,996.55
800 Other Objects				

General Fund (10)

1110 Regular Programs

800 Other Objects

810 Dues and Fees

890 Miscellaneous Expenditures

Total Other Objects

Total 1110 Regular Programs

Elementary

Secondary

Federal

Total

147.26

3,344.24

3,491.50

42,860.45

81,721.87

124,582.32

\$43,007.71

\$85,066.11

\$128,073.82

\$18,990,904.87

\$25,316,913.64

\$44,307,818.51

General Fund (10)

	<u>Elementary</u>	<u>Secondary</u>	<u>Federal</u>	<u>Total</u>
1190 Federally-Funded Regular Programs				
100 Personnel Services – Salaries				
100 Personnel Services – Salaries			466,783.95	466,783.95
Total Personnel Services – Salaries			\$466,783.95	\$466,783.95
200 Personnel Services – Employee Benefits				
210 Group Insurance – Contracted Provider			1,002.03	1,002.03
220 Social Security Contributions			35,258.68	35,258.68
230 PSERS Retirement Contributions			69,193.78	69,193.78
250 Unemployment Compensation			190.80	190.80
260 Workers' Compensation			1,645.30	1,645.30
270 Group Insurance – Self-Insurance			55,309.32	55,309.32
Total Personnel Services – Employee Benefits			\$162,599.91	\$162,599.91
500 Other Purchased Services				
510 Student Transportation Services			331.37	331.37
Total Other Purchased Services			\$331.37	\$331.37
600 Supplies				
610 General Supplies			6,898.26	6,898.26
640 Books and Periodicals			30,718.72	30,718.72
Total Supplies			\$37,616.98	\$37,616.98
Total 1190 Federally-Funded Regular Programs			\$667,332.21	\$667,332.21

General Fund (10)

1200 Special Programs – Elementary / Secondary	<u>Elementary</u>	<u>Secondary</u>	<u>Federal</u>	<u>Total</u>
100 Personnel Services – Salaries				
100 Personnel Services – Salaries	1,513,301.07	2,329,650.45		3,842,951.52
Total Personnel Services – Salaries	\$1,513,301.07	\$2,329,650.45		\$3,842,951.52
200 Personnel Services – Employee Benefits				
210 Group Insurance – Contracted Provider	3,689.62	5,041.10		8,730.72
220 Social Security Contributions	114,722.79	174,330.41		289,053.20
230 PSERS Retirement Contributions	506,277.89	797,236.42		1,303,514.31
250 Unemployment Compensation	101.38	129.20		230.58
260 Workers' Compensation	3,055.52	4,703.72		7,759.24
270 Group Insurance – Self-Insurance	302,040.51	459,827.28		761,867.79
280 Other Post-Employment Benefits (OPEB)	3,671.13	3,671.13		7,342.26
292 Health Savings Accounts		5,832.80		5,832.80
Total Personnel Services – Employee Benefits	\$933,558.84	\$1,450,772.06		\$2,384,330.90
300 Purchased Professional and Technical Services				
322 Professional Educational Services – Ius	1,429,136.64	1,972,285.71	568,666.16	3,970,088.51
329 Professional Educational Services – Other	3,500.57	3,500.57		7,001.14
330 Other Professional Services	623,202.41	624,071.65		1,247,274.06
Total Purchased Professional and Technical Services	\$2,055,839.62	\$2,599,857.93	\$568,666.16	\$5,224,363.71
500 Other Purchased Services				
510 Student Transportation Services	4.47	2,045.61		2,050.08
561 Tuition To Other School Districts Within the State	51.44	16,541.44		16,592.88
562 Tuition To Pennsylvania Charter Schools	1,509,854.07	1,509,854.07		3,019,708.14
563 Tuition To Nonpublic Schools	70,006.78	269,702.13		339,708.91
567 Tuition To Approved Private Schools (APS) and PA Chartered Schools for the Deaf and Blind	110,498.78	196,945.26		307,444.04
568 Tuition To Private Residential Rehabilitative Institutions (PRRI) [In-State] and Detention Centers	1,554.04	1,554.05		3,108.09
580 Travel	4,386.20	4,739.54		9,125.74
594 IU Payment By Withholding for Institutionalized Children's Programs – Special Classes	2,394.75	2,394.75		4,789.50
Total Other Purchased Services	\$1,698,750.53	\$2,003,776.85		\$3,702,527.38
600 Supplies				
610 General Supplies	16,163.42	20,777.12	1,508.77	38,449.31
640 Books and Periodicals	2.86	921.13		923.99
650 Supplies & Fees – Technology Related	17,428.12	14,297.36	3,270.14	34,995.62
Total Supplies	\$33,594.40	\$35,995.61	\$4,778.91	\$74,368.92
800 Other Objects				
890 Miscellaneous Expenditures		3,454.00	600.00	4,054.00
Total Other Objects		\$3,454.00	\$600.00	\$4,054.00
Total 1200 Special Programs – Elementary / Secondary	\$6,235,044.46	\$8,423,506.90	\$574,045.07	\$15,232,596.43

General Fund (10)

1210 Life Skills Support

	<u>Elementary</u>	<u>Secondary</u>	<u>Federal</u>	<u>Total</u>
100 Personnel Services – Salaries				
100 Personnel Services – Salaries	150,260.56	189,042.50		339,303.06
Total Personnel Services – Salaries	\$150,260.56	\$189,042.50		\$339,303.06
200 Personnel Services – Employee Benefits				
210 Group Insurance – Contracted Provider	442.07	437.86		879.93
220 Social Security Contributions	11,410.11	14,181.71		25,591.82
230 PSERS Retirement Contributions	51,018.26	64,186.07		115,204.33
250 Unemployment Compensation	7.13	5.55		12.68
260 Workers' Compensation	303.41	381.74		685.15
270 Group Insurance – Self-Insurance	43,281.79	43,734.66		87,016.45
Total Personnel Services – Employee Benefits	\$106,462.77	\$122,927.59		\$229,390.36
300 Purchased Professional and Technical Services				
322 Professional Educational Services – Ius		171,235.83		171,235.83
Total Purchased Professional and Technical Services		\$171,235.83		\$171,235.83
500 Other Purchased Services				
580 Travel		921.28		921.28
Total Other Purchased Services		\$921.28		\$921.28
600 Supplies				
610 General Supplies	5,731.90	9,778.75		15,510.65
650 Supplies & Fees – Technology Related		119.99		119.99
Total Supplies	\$5,731.90	\$9,898.74		\$15,630.64
800 Other Objects				
890 Miscellaneous Expenditures		3,312.00	600.00	3,912.00
Total Other Objects		\$3,312.00	\$600.00	\$3,912.00
Total 1210 Life Skills Support	\$262,455.23	\$497,337.94	\$600.00	\$760,393.17

General Fund (10)

	<u>Elementary</u>	<u>Secondary</u>	<u>Federal</u>	<u>Total</u>
1220 Sensory Support				
100 Personnel Services – Salaries				
100 Personnel Services – Salaries	76.00			76.00
Total Personnel Services – Salaries	\$76.00			\$76.00
200 Personnel Services – Employee Benefits				
220 Social Security Contributions	5.79			5.79
230 PSERS Retirement Contributions	25.80			25.80
260 Workers’ Compensation	0.15			0.15
Total Personnel Services – Employee Benefits	\$31.74			\$31.74
300 Purchased Professional and Technical Services				
322 Professional Educational Services – lus	306,125.97	412,518.74		718,644.71
330 Other Professional Services	417.58	16,790.14		17,207.72
Total Purchased Professional and Technical Services	\$306,543.55	\$429,308.88		\$735,852.43
500 Other Purchased Services				
563 Tuition To Nonpublic Schools	69,911.46	69,479.34		139,390.80
Total Other Purchased Services	\$69,911.46	\$69,479.34		\$139,390.80
600 Supplies				
610 General Supplies	1,224.86	1,214.87		2,439.73
Total Supplies	\$1,224.86	\$1,214.87		\$2,439.73
Total 1220 Sensory Support	\$377,787.61	\$500,003.09		\$877,790.70

General Fund (10)

1230 Emotional Support

	<u>Elementary</u>	<u>Secondary</u>	<u>Federal</u>	<u>Total</u>
100 Personnel Services – Salaries				
100 Personnel Services – Salaries	322,832.52	409,730.78		732,563.30
Total Personnel Services – Salaries	\$322,832.52	\$409,730.78		\$732,563.30
200 Personnel Services – Employee Benefits				
210 Group Insurance – Contracted Provider	951.54	1,083.15		2,034.69
220 Social Security Contributions	24,343.41	30,589.22		54,932.63
230 PSERS Retirement Contributions	108,423.61	146,987.52		255,411.13
250 Unemployment Compensation	18.44	18.26		36.70
260 Workers' Compensation	651.83	827.25		1,479.08
270 Group Insurance – Self-Insurance	68,435.76	90,894.55		159,330.31
Total Personnel Services – Employee Benefits	\$202,824.59	\$270,399.95		\$473,224.54
300 Purchased Professional and Technical Services				
322 Professional Educational Services – Ius	394,755.92	514,453.26		909,209.18
330 Other Professional Services	1,522.50	1,957.50		3,480.00
Total Purchased Professional and Technical Services	\$396,278.42	\$516,410.76		\$912,689.18
600 Supplies				
610 General Supplies	81.40	402.96		484.36
640 Books and Periodicals	2.86	921.13		923.99
Total Supplies	\$84.26	\$1,324.09		\$1,408.35
Total 1230 Emotional Support	\$922,019.79	\$1,197,865.58		\$2,119,885.37

General Fund (10)

1240 Academic Support

	<u>Elementary</u>	<u>Secondary</u>	<u>Federal</u>	<u>Total</u>
100 Personnel Services – Salaries				
100 Personnel Services – Salaries	803,243.63	1,380,645.91		2,183,889.54
Total Personnel Services – Salaries	\$803,243.63	\$1,380,645.91		\$2,183,889.54
200 Personnel Services – Employee Benefits				
210 Group Insurance – Contracted Provider	2,296.01	3,520.09		5,816.10
220 Social Security Contributions	60,852.25	102,775.10		163,627.35
230 PSERS Retirement Contributions	271,736.59	476,387.93		748,124.52
250 Unemployment Compensation	34.93	51.94		86.87
260 Workers' Compensation	1,621.80	2,787.56		4,409.36
270 Group Insurance – Self-Insurance	190,322.96	325,198.07		515,521.03
Total Personnel Services – Employee Benefits	\$526,864.54	\$910,720.69		\$1,437,585.23
300 Purchased Professional and Technical Services				
322 Professional Educational Services – Ius	1,275.00	274,658.73		275,933.73
Total Purchased Professional and Technical Services	\$1,275.00	\$274,658.73		\$275,933.73
500 Other Purchased Services				
510 Student Transportation Services	3.69	1,511.22		1,514.91
Total Other Purchased Services	\$3.69	\$1,511.22		\$1,514.91
600 Supplies				
610 General Supplies	1,304.94			1,304.94
650 Supplies & Fees – Technology Related	4,428.80			4,428.80
Total Supplies	\$5,733.74			\$5,733.74
800 Other Objects				
890 Miscellaneous Expenditures		142.00		142.00
Total Other Objects		\$142.00		\$142.00
Total 1240 Academic Support	\$1,337,120.60	\$2,567,678.55		\$3,904,799.15

General Fund (10)

	<u>Elementary</u>	<u>Secondary</u>	<u>Federal</u>	<u>Total</u>
1241 Learning Support – Public				
100 Personnel Services – Salaries				
100 Personnel Services – Salaries	705,624.83	1,235,791.71		1,941,416.54
Total Personnel Services – Salaries	\$705,624.83	\$1,235,791.71		\$1,941,416.54
200 Personnel Services – Employee Benefits				
210 Group Insurance – Contracted Provider	2,076.53	3,110.56		5,187.09
220 Social Security Contributions	53,462.59	92,001.91		145,464.50
230 PSERS Retirement Contributions	238,591.86	427,205.17		665,797.03
250 Unemployment Compensation	32.12	44.33		76.45
260 Workers' Compensation	1,424.72	2,495.08		3,919.80
270 Group Insurance – Self-Insurance	168,430.16	294,714.96		463,145.12
Total Personnel Services – Employee Benefits	\$464,017.98	\$819,572.01		\$1,283,589.99
300 Purchased Professional and Technical Services				
322 Professional Educational Services – lus		273,383.73		273,383.73
Total Purchased Professional and Technical Services		\$273,383.73		\$273,383.73
Total 1241 Learning Support – Public	\$1,169,642.81	\$2,328,747.45		\$3,498,390.26

General Fund (10)

1243 Gifted Support

	<u>Elementary</u>	<u>Secondary</u>	<u>Federal</u>	<u>Total</u>
100 Personnel Services – Salaries				
100 Personnel Services – Salaries	97,618.80	144,854.20		242,473.00
Total Personnel Services – Salaries	\$97,618.80	\$144,854.20		\$242,473.00
200 Personnel Services – Employee Benefits				
210 Group Insurance – Contracted Provider	219.48	409.53		629.01
220 Social Security Contributions	7,389.66	10,773.19		18,162.85
230 PSERS Retirement Contributions	33,144.73	49,182.76		82,327.49
250 Unemployment Compensation	2.81	7.61		10.42
260 Workers' Compensation	197.08	292.48		489.56
270 Group Insurance – Self-Insurance	21,892.80	30,483.11		52,375.91
Total Personnel Services – Employee Benefits	\$62,846.56	\$91,148.68		\$153,995.24
300 Purchased Professional and Technical Services				
322 Professional Educational Services – Ius	1,275.00	1,275.00		2,550.00
Total Purchased Professional and Technical Services	\$1,275.00	\$1,275.00		\$2,550.00
500 Other Purchased Services				
510 Student Transportation Services	3.69	1,511.22		1,514.91
Total Other Purchased Services	\$3.69	\$1,511.22		\$1,514.91
600 Supplies				
610 General Supplies	1,304.94			1,304.94
650 Supplies & Fees – Technology Related	4,428.80			4,428.80
Total Supplies	\$5,733.74			\$5,733.74
800 Other Objects				
890 Miscellaneous Expenditures		142.00		142.00
Total Other Objects		\$142.00		\$142.00
Total 1243 Gifted Support	\$167,477.79	\$238,931.10		\$406,408.89

General Fund (10)

1270 Multi-Handicapped Support

300 Purchased Professional and Technical Services

322 Professional Educational Services – lus

Total Purchased Professional and Technical Services

Total 1270 Multi-Handicapped Support

	<u>Elementary</u>	<u>Secondary</u>	<u>Federal</u>	<u>Total</u>
	42,994.48	42,994.48		85,988.96
	\$42,994.48	\$42,994.48		\$85,988.96
	\$42,994.48	\$42,994.48		\$85,988.96

General Fund (10)

1280 Early Intervention Support

300 Purchased Professional and Technical Services

322 Professional Educational Services – lus

Total Purchased Professional and Technical Services

Total 1280 Early Intervention Support

Elementary

Secondary

Federal

Total

37,412.40

37,412.40

\$37,412.40

\$37,412.40

\$37,412.40

\$37,412.40

General Fund (10)

	<u>Elementary</u>	<u>Secondary</u>	<u>Federal</u>	<u>Total</u>
1290 Special Programs - Other Support				
100 Personnel Services – Salaries				
100 Personnel Services – Salaries	236,888.36	350,231.26		587,119.62
Total Personnel Services – Salaries	\$236,888.36	\$350,231.26		\$587,119.62
200 Personnel Services – Employee Benefits				
220 Social Security Contributions	18,111.23	26,784.38		44,895.61
230 PSERS Retirement Contributions	75,073.63	109,674.90		184,748.53
250 Unemployment Compensation	40.88	53.45		94.33
260 Workers' Compensation	478.33	707.17		1,185.50
280 Other Post-Employment Benefits (OPEB)	3,671.13	3,671.13		7,342.26
292 Health Savings Accounts		5,832.80		5,832.80
Total Personnel Services – Employee Benefits	\$97,375.20	\$146,723.83		\$244,099.03
300 Purchased Professional and Technical Services				
322 Professional Educational Services – Ius	646,572.87	556,424.67	568,666.16	1,771,663.70
329 Professional Educational Services – Other	3,500.57	3,500.57		7,001.14
330 Other Professional Services	621,262.33	605,324.01		1,226,586.34
Total Purchased Professional and Technical Services	\$1,271,335.77	\$1,165,249.25	\$568,666.16	\$3,005,251.18
500 Other Purchased Services				
510 Student Transportation Services	0.78	534.39		535.17
561 Tuition To Other School Districts Within the State	51.44	16,541.44		16,592.88
562 Tuition To Pennsylvania Charter Schools	1,509,854.07	1,509,854.07		3,019,708.14
563 Tuition To Nonpublic Schools	95.32	200,222.79		200,318.11
567 Tuition To Approved Private Schools (APS) and PA Chartered Schools for the Deaf and Blind	110,498.78	196,945.26		307,444.04
568 Tuition To Private Residential Rehabilitative Institutions (PRRI) [In-State] and Detention Centers	1,554.04	1,554.05		3,108.09
580 Travel	4,386.20	3,818.26		8,204.46
594 IU Payment By Withholding for Institutionalized Children's Programs – Special Classes	2,394.75	2,394.75		4,789.50
Total Other Purchased Services	\$1,628,835.38	\$1,931,865.01		\$3,560,700.39
600 Supplies				
610 General Supplies	7,820.32	9,380.54	1,508.77	18,709.63
650 Supplies & Fees – Technology Related	12,999.32	14,177.37	3,270.14	30,446.83
Total Supplies	\$20,819.64	\$23,557.91	\$4,778.91	\$49,156.46
Total 1290 Special Programs - Other Support	\$3,255,254.35	\$3,617,627.26	\$573,445.07	\$7,446,326.68

General Fund (10)

1300 Vocational Education

300 Purchased Professional and Technical Services

322 Professional Educational Services – Ius

Elementary

Secondary

Federal

Total

2,606,688.00

2,606,688.00

Total Purchased Professional and Technical Services

\$2,606,688.00

\$2,606,688.00

500 Other Purchased Services

561 Tuition To Other School Districts Within the State

564 Tuition To Career and Technology Centers

81,848.00

81,848.00

103,265.29

103,265.29

Total Other Purchased Services

\$185,113.29

\$185,113.29

Total 1300 Vocational Education

\$2,791,801.29

\$2,791,801.29

General Fund (10)

	<u>Elementary</u>	<u>Secondary</u>	<u>Federal</u>	<u>Total</u>
1400 Other Instructional Programs – Elementary / Secondary				
100 Personnel Services – Salaries				
100 Personnel Services – Salaries	9.48	24,150.02		24,159.50
Total Personnel Services – Salaries	\$9.48	\$24,150.02		\$24,159.50
200 Personnel Services – Employee Benefits				
220 Social Security Contributions	0.71	1,815.37		1,816.08
230 PSERS Retirement Contributions	3.22	8,199.70		8,202.92
250 Unemployment Compensation		0.17		0.17
260 Workers' Compensation	0.02	48.76		48.78
Total Personnel Services – Employee Benefits	\$3.95	\$10,064.00		\$10,067.95
300 Purchased Professional and Technical Services				
322 Professional Educational Services – Ius		169.16		169.16
323 Professional Educational Services – Other Educational Agencies	9,147.86	23,176.74		32,324.60
329 Professional Educational Services – Other			15,000.00	15,000.00
Total Purchased Professional and Technical Services	\$9,147.86	\$23,345.90	\$15,000.00	\$47,493.76
500 Other Purchased Services				
530 Communications	250.00	250.00		500.00
Total Other Purchased Services	\$250.00	\$250.00		\$500.00
Total 1400 Other Instructional Programs – Elementary / Secondary	\$9,411.29	\$57,809.92	\$15,000.00	\$82,221.21

General Fund (10)

1420 Summer School

	<u>Elementary</u>	<u>Secondary</u>	<u>Federal</u>	<u>Total</u>
100 Personnel Services – Salaries				
100 Personnel Services – Salaries	1.65	21,630.85		21,632.50
Total Personnel Services – Salaries	\$1.65	\$21,630.85		\$21,632.50
200 Personnel Services – Employee Benefits				
220 Social Security Contributions	0.12	1,626.40		1,626.52
230 PSERS Retirement Contributions	0.56	7,344.36		7,344.92
250 Unemployment Compensation		0.17		0.17
260 Workers' Compensation		43.68		43.68
Total Personnel Services – Employee Benefits	\$0.68	\$9,014.61		\$9,015.29
300 Purchased Professional and Technical Services				
323 Professional Educational Services – Other Educational Agencies		7,213.00		7,213.00
329 Professional Educational Services – Other			15,000.00	15,000.00
Total Purchased Professional and Technical Services		\$7,213.00	\$15,000.00	\$22,213.00
Total 1420 Summer School	\$2.33	\$37,858.46	\$15,000.00	\$52,860.79

General Fund (10)

	<u>Elementary</u>	<u>Secondary</u>	<u>Federal</u>	<u>Total</u>
1430 Homebound Instruction				
100 Personnel Services – Salaries				
100 Personnel Services – Salaries	7.83	2,519.17		2,527.00
Total Personnel Services – Salaries	\$7.83	\$2,519.17		\$2,527.00
200 Personnel Services – Employee Benefits				
220 Social Security Contributions	0.59	188.97		189.56
230 PSERS Retirement Contributions	2.66	855.34		858.00
260 Workers’ Compensation	0.02	5.08		5.10
Total Personnel Services – Employee Benefits	\$3.27	\$1,049.39		\$1,052.66
Total 1430 Homebound Instruction	\$11.10	\$3,568.56		\$3,579.66

General Fund (10)

	<u>Elementary</u>	<u>Secondary</u>	<u>Federal</u>	<u>Total</u>
1440 Alternative Regular Education Programs				
300 <u>Purchased Professional and Technical Services</u>				
322 Professional Educational Services – Ius		169.16		169.16
323 Professional Educational Services – Other Educational Agencies	9,147.86	15,963.74		25,111.60
Total Purchased Professional and Technical Services	\$9,147.86	\$16,132.90		\$25,280.76
Total 1440 Alternative Regular Education Programs	\$9,147.86	\$16,132.90		\$25,280.76

General Fund (10)

	<u>Elementary</u>	<u>Secondary</u>	<u>Federal</u>	<u>Total</u>
1442 Alternative Education Programs				
300 <u>Purchased Professional and Technical Services</u>				
322 Professional Educational Services – Ius		169.16		169.16
323 Professional Educational Services – Other Educational Agencies	9,147.86	15,963.74		25,111.60
Total Purchased Professional and Technical Services	\$9,147.86	\$16,132.90		\$25,280.76
Total 1442 Alternative Education Programs	\$9,147.86	\$16,132.90		\$25,280.76

General Fund (10)

	<u>Elementary</u>	<u>Secondary</u>	<u>Federal</u>	<u>Total</u>
1490 Additional Other Instructional Programs				
500 Other Purchased Services				
530 Communications	250.00	250.00		500.00
Total Other Purchased Services	\$250.00	\$250.00		\$500.00
Total 1490 Additional Other Instructional Programs	\$250.00	\$250.00		\$500.00

General Fund (10)

1500 Nonpublic School Programs

300 Purchased Professional and Technical Services

360 Employee Training and Development Services

Total Purchased Professional and Technical Services

Total 1500 Nonpublic School Programs

Elementary

Secondary

Federal

Total

5,571.19

5,571.19

\$5,571.19

\$5,571.19

\$5,571.19

\$5,571.19

General Fund (10)

2000 Support Services

Total

100 Personnel Services – Salaries

100 Personnel Services – Salaries 9,927,331.26

Total Personnel Services – Salaries \$9,927,331.26

200 Personnel Services – Employee Benefits

210 Group Insurance – Contracted Provider 31,585.66

220 Social Security Contributions 729,976.83

230 PSERS Retirement Contributions 3,301,698.08

240 Tuition Reimbursement 220,823.87

250 Unemployment Compensation 481.67

260 Workers' Compensation 20,346.31

270 Group Insurance – Self-Insurance 1,721,573.38

280 Other Post-Employment Benefits (OPEB) 80,001.84

291 Other Retirement Plans 80,211.63

292 Health Savings Accounts 34,883.43

299 All Other Employee Benefits 36,694.49

Total Personnel Services – Employee Benefits \$6,258,277.19

300 Purchased Professional and Technical Services

310 Official / Administrative Services 107,819.55

322 Professional Educational Services – Ius 20,065.86

329 Professional Educational Services – Other 114,261.30

330 Other Professional Services 871,797.89

340 Technical Services 222,297.04

350 Security / Safety Services 334,712.03

360 Employee Training and Development Services 161,388.41

390 Other Purchased Professional and Technical Services 9,000.00

Total Purchased Professional and Technical Services \$1,841,342.08

400 Purchased Property Services

410 Cleaning Services 2,549,203.98

420 Utility Services 189,746.22

430 Repairs and Maintenance Services 282,924.67

440 Rentals 45,067.48

460 Extermination Services 11,058.00

490 Other Purchased Property Services 12,675.50

Total Purchased Property Services \$3,090,675.85

500 Other Purchased Services

513 Contracted Carriers 6,655,802.55

516 Student Transportation Services From the IU 3,294.68

520 Insurance – General 109,757.00

521 Fire Insurance 138,856.20

522 Automotive Liability Insurance 21,237.00

523 General Property and Liability Insurance 104,380.00

529 Other Insurance 24,247.50

530 Communications 97,214.77

549 Other Advertising/Public Relations 5,053.60

LEA : 124150503 Avon Grove SD

Printed 11/11/2024 9:36:35 AM

General Fund (10)

2000 Support Services

Total

500 Other Purchased Services

550 Printing and Binding	7,228.39
580 Travel	42,466.77
595 IU Payments By Withholding	29,620.85
596 Direct Payments To Intermediate Units	384,121.32

Total Other Purchased Services	\$7,623,280.63
---------------------------------------	-----------------------

600 Supplies

610 General Supplies	314,624.19
620 Energy	1,157,617.39
630 Food	20,541.22
640 Books and Periodicals	295,060.20
650 Supplies & Fees – Technology Related	465,502.41

Total Supplies	\$2,253,345.41
-----------------------	-----------------------

700 Property

752 Capital Equipment – Original and Additional	20,726.45
766 Capitalized Technology Equipment – Replacement	17,959.96

Total Property	\$38,686.41
-----------------------	--------------------

800 Other Objects

810 Dues and Fees	51,479.41
820 Claims and Judgments Against the LEA	35,532.00
890 Miscellaneous Expenditures	85,081.00
899 Pass-Through Funds	168,803.10

Total Other Objects	\$340,895.51
----------------------------	---------------------

Total 2000 Support Services	\$31,373,834.34
------------------------------------	------------------------

General Fund (10)

	<u>Elementary</u>	<u>Secondary</u>	<u>Federal</u>	<u>Total</u>
2100 Support Services – Students				
100 Personnel Services – Salaries				
100 Personnel Services – Salaries	905,333.39	1,526,706.82	248,867.34	2,942,220.28
Total Personnel Services – Salaries	\$905,333.39	\$1,526,706.82	\$248,867.34	\$2,942,220.28
200 Personnel Services – Employee Benefits				
210 Group Insurance – Contracted Provider	2,922.35	4,107.20		7,815.13
220 Social Security Contributions	68,249.84	115,029.71	18,519.24	221,260.70
230 PSERS Retirement Contributions	302,634.00	507,379.49	84,612.27	983,027.03
250 Unemployment Compensation	(30.55)	(0.42)	195.88	180.14
260 Workers' Compensation	1,244.90	2,488.29	1,866.36	6,127.09
270 Group Insurance – Self-Insurance	218,616.93	207,658.22		483,891.29
292 Health Savings Accounts	908.64	2,450.03		3,358.67
299 All Other Employee Benefits	600.00	600.00		1,200.00
Total Personnel Services – Employee Benefits	\$595,146.11	\$839,712.52	\$105,193.75	\$1,706,860.05
300 Purchased Professional and Technical Services				
322 Professional Educational Services – lus		17,395.92		17,395.92
330 Other Professional Services	264,753.26	263,178.87		527,932.13
340 Technical Services		4,308.77		4,308.77
Total Purchased Professional and Technical Services	\$264,753.26	\$284,883.56		\$549,636.82
400 Purchased Property Services				
410 Cleaning Services	36.16	36.16		72.32
440 Rentals	255.17	255.17		510.34
Total Purchased Property Services	\$291.33	\$291.33		\$582.66
500 Other Purchased Services				
549 Other Advertising/Public Relations	242.74	242.74		485.48
580 Travel	601.88	601.87		1,203.75
Total Other Purchased Services	\$844.62	\$844.61		\$1,689.23
600 Supplies				
610 General Supplies	6,517.99	7,907.12		14,425.11
630 Food	632.82	1,276.67		1,909.49
650 Supplies & Fees – Technology Related	6,987.86	20,369.93		27,357.79
Total Supplies	\$14,138.67	\$29,553.72		\$43,692.39
800 Other Objects				
810 Dues and Fees	170.00	170.00		340.00
890 Miscellaneous Expenditures		84,931.00		84,931.00
Total Other Objects	\$170.00	\$85,101.00		\$85,271.00
Total 2100 Support Services – Students	\$1,780,677.38	\$2,767,093.56	\$354,061.09	\$5,329,952.43

General Fund (10)

	<u>Elementary</u>	<u>Secondary</u>	<u>Federal</u>	<u>Total</u>
2110 Supervision of Student Services				
100 Personnel Services – Salaries				
100 Personnel Services – Salaries	154,298.35	157,608.16	12.50	311,919.01
Total Personnel Services – Salaries	\$154,298.35	\$157,608.16	\$12.50	\$311,919.01
200 Personnel Services – Employee Benefits				
210 Group Insurance – Contracted Provider	547.15	547.14		1,094.29
220 Social Security Contributions	11,713.37	11,966.31	0.96	23,680.64
230 PSERS Retirement Contributions	51,576.48	52,697.69	1.71	104,275.88
250 Unemployment Compensation	8.93	9.38		18.31
260 Workers' Compensation	311.23	317.92	0.02	629.17
270 Group Insurance – Self-Insurance	31,439.08	31,439.08		62,878.16
292 Health Savings Accounts	908.64	908.63		1,817.27
299 All Other Employee Benefits	600.00	600.00		1,200.00
Total Personnel Services – Employee Benefits	\$97,104.88	\$98,486.15	\$2.69	\$195,593.72
300 Purchased Professional and Technical Services				
322 Professional Educational Services – lus		17,395.92		17,395.92
330 Other Professional Services	46,530.86	22,931.97		69,462.83
340 Technical Services		4,308.77		4,308.77
Total Purchased Professional and Technical Services	\$46,530.86	\$44,636.66		\$91,167.52
400 Purchased Property Services				
410 Cleaning Services	36.16	36.16		72.32
440 Rentals	255.17	255.17		510.34
Total Purchased Property Services	\$291.33	\$291.33		\$582.66
500 Other Purchased Services				
549 Other Advertising/Public Relations	242.74	242.74		485.48
580 Travel	601.88	601.87		1,203.75
Total Other Purchased Services	\$844.62	\$844.61		\$1,689.23
600 Supplies				
610 General Supplies	2,071.55	1,138.96		3,210.51
630 Food	632.82	632.82		1,265.64
650 Supplies & Fees – Technology Related	3,133.22	3,133.23		6,266.45
Total Supplies	\$5,837.59	\$4,905.01		\$10,742.60
800 Other Objects				
810 Dues and Fees	170.00	170.00		340.00
Total Other Objects	\$170.00	\$170.00		\$340.00
Total 2110 Supervision of Student Services	\$305,077.63	\$306,941.92	\$15.19	\$612,034.74

General Fund (10)

2111 Supervision of Student Services – Head of Component	<u>Elementary</u>	<u>Secondary</u>	<u>Federal</u>	<u>Total</u>
100 Personnel Services – Salaries				
100 Personnel Services – Salaries	143,417.51	143,417.53		286,835.04
Total Personnel Services – Salaries	\$143,417.51	\$143,417.53		\$286,835.04
200 Personnel Services – Employee Benefits				
210 Group Insurance – Contracted Provider	506.91	506.91		1,013.82
220 Social Security Contributions	10,898.63	10,898.63		21,797.26
230 PSERS Retirement Contributions	48,014.38	48,014.37		96,028.75
250 Unemployment Compensation	6.45	6.44		12.89
260 Workers' Compensation	289.56	289.55		579.11
270 Group Insurance – Self-Insurance	29,293.36	29,293.36		58,586.72
292 Health Savings Accounts	908.64	908.63		1,817.27
299 All Other Employee Benefits	600.00	600.00		1,200.00
Total Personnel Services – Employee Benefits	\$90,517.93	\$90,517.89		\$181,035.82
300 Purchased Professional and Technical Services				
322 Professional Educational Services – lus		17,395.92		17,395.92
330 Other Professional Services	46,530.86	22,931.97		69,462.83
340 Technical Services		4,308.77		4,308.77
Total Purchased Professional and Technical Services	\$46,530.86	\$44,636.66		\$91,167.52
400 Purchased Property Services				
410 Cleaning Services	36.16	36.16		72.32
440 Rentals	255.17	255.17		510.34
Total Purchased Property Services	\$291.33	\$291.33		\$582.66
500 Other Purchased Services				
549 Other Advertising/Public Relations	242.74	242.74		485.48
580 Travel	601.88	601.87		1,203.75
Total Other Purchased Services	\$844.62	\$844.61		\$1,689.23
600 Supplies				
610 General Supplies	2,071.55	1,138.96		3,210.51
630 Food	632.82	632.82		1,265.64
650 Supplies & Fees – Technology Related	3,133.22	3,133.23		6,266.45
Total Supplies	\$5,837.59	\$4,905.01		\$10,742.60
800 Other Objects				
810 Dues and Fees	170.00	170.00		340.00
Total Other Objects	\$170.00	\$170.00		\$340.00
Total 2111 Supervision of Student Services – Head of Component	\$287,609.84	\$284,783.03		\$572,392.87

General Fund (10)

	<u>Elementary</u>	<u>Secondary</u>	<u>Federal</u>	<u>Total</u>
2119 Supervision of Student Services – All Other Supervision				
100 Personnel Services – Salaries				
100 Personnel Services – Salaries	10,880.84	14,190.63	12.50	25,083.97
Total Personnel Services – Salaries	\$10,880.84	\$14,190.63	\$12.50	\$25,083.97
200 Personnel Services – Employee Benefits				
210 Group Insurance – Contracted Provider	40.24	40.23		80.47
220 Social Security Contributions	814.74	1,067.68	0.96	1,883.38
230 PSERS Retirement Contributions	3,562.10	4,683.32	1.71	8,247.13
250 Unemployment Compensation	2.48	2.94		5.42
260 Workers' Compensation	21.67	28.37	0.02	50.06
270 Group Insurance – Self-Insurance	2,145.72	2,145.72		4,291.44
Total Personnel Services – Employee Benefits	\$6,586.95	\$7,968.26	\$2.69	\$14,557.90
Total 2119 Supervision of Student Services – All Other Supervision	\$17,467.79	\$22,158.89	\$15.19	\$39,641.87

General Fund (10)

2120 Guidance Services

	<u>Elementary</u>	<u>Secondary</u>	<u>Federal</u>	<u>Total</u>
100 Personnel Services – Salaries				
100 Personnel Services – Salaries	552,478.12	1,043,284.06		1,595,762.18
Total Personnel Services – Salaries	\$552,478.12	\$1,043,284.06		\$1,595,762.18
200 Personnel Services – Employee Benefits				
210 Group Insurance – Contracted Provider	1,518.49	2,487.24		4,005.73
220 Social Security Contributions	41,591.65	78,715.71		120,307.36
230 PSERS Retirement Contributions	183,702.39	345,301.04		529,003.43
250 Unemployment Compensation	47.44	74.03		121.47
260 Workers' Compensation	1,206.03	2,203.25		3,409.28
270 Group Insurance – Self-Insurance	105,493.45	121,026.21		226,519.66
292 Health Savings Accounts		1,541.40		1,541.40
Total Personnel Services – Employee Benefits	\$333,559.45	\$551,348.88		\$884,908.33
300 Purchased Professional and Technical Services				
330 Other Professional Services	126,852.00	142,831.00		269,683.00
Total Purchased Professional and Technical Services	\$126,852.00	\$142,831.00		\$269,683.00
600 Supplies				
610 General Supplies	3.07	2,324.79		2,327.86
630 Food		643.85		643.85
650 Supplies & Fees – Technology Related	1,218.47	14,600.53		15,819.00
Total Supplies	\$1,221.54	\$17,569.17		\$18,790.71
800 Other Objects				
890 Miscellaneous Expenditures		84,931.00		84,931.00
Total Other Objects		\$84,931.00		\$84,931.00
Total 2120 Guidance Services	\$1,014,111.11	\$1,839,964.11		\$2,854,075.22

General Fund (10)

2130 Attendance Services

Elementary

Secondary

Federal

Total

100 Personnel Services – Salaries

100 Personnel Services – Salaries

112,804.04

Total Personnel Services – Salaries

\$112,804.04

200 Personnel Services – Employee Benefits

210 Group Insurance – Contracted Provider

218.93

220 Social Security Contributions

8,625.33

230 PSERS Retirement Contributions

38,130.86

250 Unemployment Compensation

9.64

260 Workers' Compensation

227.74

270 Group Insurance – Self-Insurance

21,867.33

Total Personnel Services – Employee Benefits

\$69,079.83

Total 2130 Attendance Services

\$181,883.87

General Fund (10)

	<u>Elementary</u>	<u>Secondary</u>	<u>Federal</u>	<u>Total</u>
2140 Psychological Services				
100 Personnel Services – Salaries				
100 Personnel Services – Salaries	129,565.86	191,466.40	136,989.58	458,021.84
Total Personnel Services – Salaries	\$129,565.86	\$191,466.40	\$136,989.58	\$458,021.84
200 Personnel Services – Employee Benefits				
210 Group Insurance – Contracted Provider	438.54	635.64		1,074.18
220 Social Security Contributions	9,685.11	14,335.87	10,226.97	34,247.95
230 PSERS Retirement Contributions	43,961.79	63,786.29	46,576.37	154,324.45
250 Unemployment Compensation	(43.47)	(65.00)	122.44	13.97
260 Workers' Compensation	(45.50)	(57.14)	1,027.35	924.71
270 Group Insurance – Self-Insurance	40,050.00	25,176.92		65,226.92
Total Personnel Services – Employee Benefits	\$94,046.47	\$103,812.58	\$57,953.13	\$255,812.18
300 Purchased Professional and Technical Services				
330 Other Professional Services	26,806.76	10,052.25		36,859.01
Total Purchased Professional and Technical Services	\$26,806.76	\$10,052.25		\$36,859.01
600 Supplies				
610 General Supplies	4,443.37	4,443.37		8,886.74
650 Supplies & Fees – Technology Related	2,636.17	2,636.17		5,272.34
Total Supplies	\$7,079.54	\$7,079.54		\$14,159.08
Total 2140 Psychological Services	\$257,498.63	\$312,410.77	\$194,942.71	\$764,852.11

General Fund (10)

2150 Speech Pathology and Audiology Services

	<u>Elementary</u>	<u>Secondary</u>	<u>Federal</u>	<u>Total</u>
100 Personnel Services – Salaries				
100 Personnel Services – Salaries	68,991.06	134,348.20	111,865.26	315,204.52
Total Personnel Services – Salaries	\$68,991.06	\$134,348.20	\$111,865.26	\$315,204.52
200 Personnel Services – Employee Benefits				
210 Group Insurance – Contracted Provider	418.17	437.18		855.35
220 Social Security Contributions	5,259.71	10,011.82	8,291.31	23,562.84
230 PSERS Retirement Contributions	23,393.34	45,594.47	38,034.19	107,022.00
250 Unemployment Compensation	(43.45)	(18.83)	73.44	11.16
260 Workers' Compensation	(226.86)	24.26	838.99	636.39
270 Group Insurance – Self-Insurance	41,634.40	30,016.01		71,650.41
Total Personnel Services – Employee Benefits	\$70,435.31	\$86,064.91	\$47,237.93	\$203,738.15
Total 2150 Speech Pathology and Audiology Services	\$139,426.37	\$220,413.11	\$159,103.19	\$518,942.67

General Fund (10)

2170 Student Accounting Services

Elementary

Secondary

Federal

Total

100 Personnel Services – Salaries

100 Personnel Services – Salaries

148,508.69

Total Personnel Services – Salaries

\$148,508.69

200 Personnel Services – Employee Benefits

210 Group Insurance – Contracted Provider

566.65

220 Social Security Contributions

10,836.58

230 PSERS Retirement Contributions

50,270.41

250 Unemployment Compensation

5.59

260 Workers' Compensation

299.80

270 Group Insurance – Self-Insurance

35,748.81

Total Personnel Services – Employee Benefits

\$97,727.84

Total 2170 Student Accounting Services

\$246,236.53

General Fund (10)

2190 Other Student Services

300 Purchased Professional and Technical Services

330 Other Professional Services

Total Purchased Professional and Technical Services

Total 2190 Other Student Services

Elementary

Secondary

Federal

Total

64,563.64

87,363.65

151,927.29

\$64,563.64

\$87,363.65

\$151,927.29

\$64,563.64

\$87,363.65

\$151,927.29

General Fund (10)

2200 Support Services – Instructional Staff

	<u>Elementary</u>	<u>Secondary</u>	<u>Federal</u>	<u>Total</u>
100 Personnel Services – Salaries				
100 Personnel Services – Salaries	637,864.77	673,944.18	68,184.50	1,379,993.45
Total Personnel Services – Salaries	\$637,864.77	\$673,944.18	\$68,184.50	\$1,379,993.45
200 Personnel Services – Employee Benefits				
210 Group Insurance – Contracted Provider	1,491.12	1,710.06		3,201.18
220 Social Security Contributions	47,789.66	50,286.31	5,129.98	103,205.95
230 PSERS Retirement Contributions	219,366.09	232,103.54	12,966.22	464,435.85
240 Tuition Reimbursement	76,890.30	88,082.50		164,972.80
250 Unemployment Compensation	42.88	24.15	8.47	75.50
260 Workers' Compensation	1,287.87	1,360.72	233.89	2,882.48
270 Group Insurance – Self-Insurance	70,685.65	90,548.61		161,234.26
291 Other Retirement Plans	7,617.45	7,617.45		15,234.90
299 All Other Employee Benefits	3,000.00	3,000.00		6,000.00
Total Personnel Services – Employee Benefits	\$428,171.02	\$474,733.34	\$18,338.56	\$921,242.92
300 Purchased Professional and Technical Services				
322 Professional Educational Services – Ius	1,334.98	1,334.96		2,669.94
329 Professional Educational Services – Other	39,464.43	41,835.07		81,299.50
330 Other Professional Services	6,090.00	6,090.00		12,180.00
340 Technical Services		294.12		294.12
360 Employee Training and Development Services	26,121.43	27,593.83	93,301.36	147,016.62
Total Purchased Professional and Technical Services	\$73,010.84	\$77,147.98	\$93,301.36	\$243,460.18
400 Purchased Property Services				
430 Repairs and Maintenance Services		184.75		184.75
Total Purchased Property Services		\$184.75		\$184.75
500 Other Purchased Services				
530 Communications	20,204.54	20,400.22	6,902.00	47,506.76
580 Travel	6,098.22	8,258.32	4,983.46	19,340.00
Total Other Purchased Services	\$26,302.76	\$28,658.54	\$11,885.46	\$66,846.76
600 Supplies				
610 General Supplies	8,834.34	7,473.46	3,446.78	19,754.58
630 Food	1,218.07	1,896.80		3,114.87
640 Books and Periodicals	124,100.78	169,026.63		293,127.41
650 Supplies & Fees – Technology Related	48,137.68	72,552.95		120,690.63
Total Supplies	\$182,290.87	\$250,949.84	\$3,446.78	\$436,687.49
800 Other Objects				
810 Dues and Fees	2,234.80	2,234.80		4,469.60
Total Other Objects	\$2,234.80	\$2,234.80		\$4,469.60
Total 2200 Support Services – Instructional Staff	\$1,349,875.06	\$1,507,853.43	\$195,156.66	\$3,052,885.15

General Fund (10)

	<u>Elementary</u>	<u>Secondary</u>	<u>Federal</u>	<u>Total</u>
2220 Technology Support Services				
100 Personnel Services – Salaries				
100 Personnel Services – Salaries	5,196.78	5,196.78		10,393.56
Total Personnel Services – Salaries	\$5,196.78	\$5,196.78		\$10,393.56
200 Personnel Services – Employee Benefits				
220 Social Security Contributions	397.66	397.66		795.32
230 PSERS Retirement Contributions	1,764.46	1,764.47		3,528.93
260 Workers’ Compensation	10.49	10.49		20.98
Total Personnel Services – Employee Benefits	\$2,172.61	\$2,172.62		\$4,345.23
500 Other Purchased Services				
530 Communications	19,451.04	19,451.05	6,902.00	45,804.09
Total Other Purchased Services	\$19,451.04	\$19,451.05	\$6,902.00	\$45,804.09
600 Supplies				
650 Supplies & Fees – Technology Related	1,250.00	1,250.00		2,500.00
Total Supplies	\$1,250.00	\$1,250.00		\$2,500.00
Total 2220 Technology Support Services	\$28,070.43	\$28,070.45	\$6,902.00	\$63,042.88

General Fund (10)

	<u>Elementary</u>	<u>Secondary</u>	<u>Federal</u>	<u>Total</u>
2250 School Library Services				
100 Personnel Services – Salaries				
100 Personnel Services – Salaries	88,506.20	181,509.24		270,015.44
Total Personnel Services – Salaries	\$88,506.20	\$181,509.24		\$270,015.44
200 Personnel Services – Employee Benefits				
210 Group Insurance – Contracted Provider	92.54	311.48		404.02
220 Social Security Contributions	6,635.21	13,488.80		20,124.01
230 PSERS Retirement Contributions	29,710.71	61,331.39		91,042.10
250 Unemployment Compensation	12.20	15.16		27.36
260 Workers' Compensation	178.70	366.44		545.14
270 Group Insurance – Self-Insurance	7,990.40	27,853.36		35,843.76
Total Personnel Services – Employee Benefits	\$44,619.76	\$103,366.63		\$147,986.39
400 Purchased Property Services				
430 Repairs and Maintenance Services		184.75		184.75
Total Purchased Property Services		\$184.75		\$184.75
500 Other Purchased Services				
530 Communications		195.68		195.68
Total Other Purchased Services		\$195.68		\$195.68
600 Supplies				
610 General Supplies	3,042.53	3,601.32		6,643.85
640 Books and Periodicals	5,399.33	10,515.26		15,914.59
650 Supplies & Fees – Technology Related	1,958.10	26,373.38		28,331.48
Total Supplies	\$10,399.96	\$40,489.96		\$50,889.92
Total 2250 School Library Services	\$143,525.92	\$325,746.26		\$469,272.18

General Fund (10)

2260 Instruction and Curriculum Development Services

	<u>Elementary</u>	<u>Secondary</u>	<u>Federal</u>	<u>Total</u>
100 Personnel Services – Salaries				
100 Personnel Services – Salaries	432,071.46	450,704.01		882,775.47
Total Personnel Services – Salaries	\$432,071.46	\$450,704.01		\$882,775.47
200 Personnel Services – Employee Benefits				
210 Group Insurance – Contracted Provider	1,398.58	1,398.58		2,797.16
220 Social Security Contributions	32,183.47	33,607.71		65,791.18
230 PSERS Retirement Contributions	145,421.84	151,748.14		297,169.98
250 Unemployment Compensation	8.70	8.70		17.40
260 Workers' Compensation	872.35	910.02		1,782.37
270 Group Insurance – Self-Insurance	62,695.25	62,695.25		125,390.50
291 Other Retirement Plans	7,617.45	7,617.45		15,234.90
299 All Other Employee Benefits	3,000.00	3,000.00		6,000.00
Total Personnel Services – Employee Benefits	\$253,197.64	\$260,985.85		\$514,183.49
300 Purchased Professional and Technical Services				
322 Professional Educational Services – Ius	1,334.98	1,334.96		2,669.94
329 Professional Educational Services – Other	1,862.09	3,565.79		5,427.88
330 Other Professional Services	6,090.00	6,090.00		12,180.00
340 Technical Services		294.12		294.12
Total Purchased Professional and Technical Services	\$9,287.07	\$11,284.87		\$20,571.94
500 Other Purchased Services				
530 Communications	753.50	753.49		1,506.99
580 Travel	2,401.58	2,401.56		4,803.14
Total Other Purchased Services	\$3,155.08	\$3,155.05		\$6,310.13
600 Supplies				
610 General Supplies	5,791.81	3,872.14	3,060.30	12,724.25
630 Food	1,218.07	1,896.80		3,114.87
640 Books and Periodicals	114,957.15	156,959.47		271,916.62
650 Supplies & Fees – Technology Related	44,929.58	44,929.57		89,859.15
Total Supplies	\$166,896.61	\$207,657.98	\$3,060.30	\$377,614.89
800 Other Objects				
810 Dues and Fees	2,234.80	2,234.80		4,469.60
Total Other Objects	\$2,234.80	\$2,234.80		\$4,469.60
Total 2260 Instruction and Curriculum Development Services	\$866,842.66	\$936,022.56	\$3,060.30	\$1,805,925.52

General Fund (10)

2270 Instructional Staff Professional Development Services

	<u>Elementary</u>	<u>Secondary</u>	<u>Federal</u>	<u>Total</u>
100 Personnel Services – Salaries				
100 Personnel Services – Salaries	37,025.34	36,534.15	68,184.50	141,743.99
Total Personnel Services – Salaries	\$37,025.34	\$36,534.15	\$68,184.50	\$141,743.99
200 Personnel Services – Employee Benefits				
220 Social Security Contributions	2,829.56	2,792.14	5,129.98	10,751.68
230 PSERS Retirement Contributions	17,815.44	17,259.54	12,966.22	48,041.20
240 Tuition Reimbursement	76,890.30	88,082.50		164,972.80
250 Unemployment Compensation	1.00	0.29	8.47	9.76
260 Workers' Compensation	74.79	73.77	233.89	382.45
Total Personnel Services – Employee Benefits	\$97,611.09	\$108,208.24	\$18,338.56	\$224,157.89
300 Purchased Professional and Technical Services				
329 Professional Educational Services – Other	37,602.34	38,269.28		75,871.62
360 Employee Training and Development Services	26,121.43	27,593.83	93,301.36	147,016.62
Total Purchased Professional and Technical Services	\$63,723.77	\$65,863.11	\$93,301.36	\$222,888.24
500 Other Purchased Services				
580 Travel	3,696.64	5,856.76	4,983.46	14,536.86
Total Other Purchased Services	\$3,696.64	\$5,856.76	\$4,983.46	\$14,536.86
600 Supplies				
610 General Supplies			386.48	386.48
640 Books and Periodicals	3,744.30	1,551.90		5,296.20
Total Supplies	\$3,744.30	\$1,551.90	\$386.48	\$5,682.68
Total 2270 Instructional Staff Professional Development Services	\$205,801.14	\$218,014.16	\$185,194.36	\$609,009.66

General Fund (10)

	<u>Elementary</u>	<u>Secondary</u>	<u>Federal</u>	<u>Total</u>
2290 Other Instructional Staff Services				
100 Personnel Services – Salaries				
100 Personnel Services – Salaries	75,064.99			75,064.99
Total Personnel Services – Salaries	\$75,064.99			\$75,064.99
200 Personnel Services – Employee Benefits				
220 Social Security Contributions	5,743.76			5,743.76
230 PSERS Retirement Contributions	24,653.64			24,653.64
250 Unemployment Compensation	20.98			20.98
260 Workers' Compensation	151.54			151.54
Total Personnel Services – Employee Benefits	\$30,569.92			\$30,569.92
Total 2290 Other Instructional Staff Services	\$105,634.91			\$105,634.91

General Fund (10)

	<u>Elementary</u>	<u>Secondary</u>	<u>Federal</u>	<u>Total</u>
2300 Support Services – Administration				
100 Personnel Services – Salaries				
100 Personnel Services – Salaries	844,028.42	1,339,892.14		2,915,375.71
Total Personnel Services – Salaries	\$844,028.42	\$1,339,892.14		\$2,915,375.71
200 Personnel Services – Employee Benefits				
210 Group Insurance – Contracted Provider	3,213.06	5,225.44		11,214.59
220 Social Security Contributions	62,990.13	100,208.52		209,298.88
230 PSERS Retirement Contributions	281,194.35	433,150.43		955,921.26
250 Unemployment Compensation	33.61	39.95		87.51
260 Workers' Compensation	1,704.15	2,705.25		5,907.01
270 Group Insurance – Self-Insurance	174,629.68	235,544.25		496,433.01
280 Other Post-Employment Benefits (OPEB)	15,053.76	15,053.76		54,038.24
291 Other Retirement Plans	12,361.19	19,347.84		43,940.74
292 Health Savings Accounts	5,029.46	7,697.44		12,726.90
299 All Other Employee Benefits	5,725.05	9,588.84		19,237.22
Total Personnel Services – Employee Benefits	\$561,934.44	\$828,561.72		\$1,808,805.36
300 Purchased Professional and Technical Services				
310 Official / Administrative Services				107,819.55
329 Professional Educational Services – Other	5.58	1,794.42		1,800.00
330 Other Professional Services				277,518.54
390 Other Purchased Professional and Technical Services				9,000.00
Total Purchased Professional and Technical Services	\$5.58	\$1,794.42		\$396,138.09
400 Purchased Property Services				
410 Cleaning Services	1,141.49	1,169.71		12,611.28
440 Rentals				30,229.00
Total Purchased Property Services	\$1,141.49	\$1,169.71		\$42,840.28
500 Other Purchased Services				
520 Insurance – General				85,388.00
530 Communications	411.89	2,583.47		2,995.36
549 Other Advertising/Public Relations				4,368.12
580 Travel	70.28	3,661.75		7,616.76
596 Direct Payments To Intermediate Units				1,996.89
Total Other Purchased Services	\$482.17	\$6,245.22		\$102,365.13
600 Supplies				
610 General Supplies	12,739.82	17,671.24		65,234.14
630 Food	3,991.45	4,622.02		14,859.27
640 Books and Periodicals				1,932.79
650 Supplies & Fees – Technology Related		50.00		50.00
Total Supplies	\$16,731.27	\$22,343.26		\$82,076.20
700 Property				
752 Capital Equipment – Original and Additional		15,416.02		20,726.45
Total Property		\$15,416.02		\$20,726.45
800 Other Objects				
810 Dues and Fees		4,195.85	4,846.35	36,651.01

General Fund (10)

2300 Support Services – Administration

800 Other Objects

820 Claims and Judgments Against the LEA

890 Miscellaneous Expenditures

Total Other Objects

Total 2300 Support Services – Administration

Elementary

Secondary

Federal

Total

32,442.00

150.00

150.00

\$4,195.85

\$4,996.35

\$69,243.01

\$1,428,519.22

\$2,220,418.84

\$5,437,570.23

General Fund (10)

2310 Board Services

Elementary

Secondary

Federal

Total

300 Purchased Professional and Technical Services

390 Other Purchased Professional and Technical Services

9,000.00

Total Purchased Professional and Technical Services

\$9,000.00

500 Other Purchased Services

520 Insurance – General

85,388.00

549 Other Advertising/Public Relations

4,368.12

Total Other Purchased Services

\$89,756.12

600 Supplies

610 General Supplies

8,517.24

630 Food

849.05

640 Books and Periodicals

1,843.95

Total Supplies

\$11,210.24

800 Other Objects

810 Dues and Fees

18,283.81

820 Claims and Judgments Against the LEA

32,442.00

Total Other Objects

\$50,725.81

Total 2310 Board Services

\$160,692.17

General Fund (10)

	<u>Elementary</u>	<u>Secondary</u>	<u>Federal</u>	<u>Total</u>
2330 Tax Assessment and Collection Services				
300 <u>Purchased Professional and Technical Services</u>				
310 Official / Administrative Services				107,819.55
Total Purchased Professional and Technical Services				\$107,819.55
500 <u>Other Purchased Services</u>				
596 Direct Payments To Intermediate Units				1,996.89
Total Other Purchased Services				\$1,996.89
Total 2330 Tax Assessment and Collection Services				\$109,816.44

General Fund (10)

2350 Legal and Accounting Services

Elementary

Secondary

Federal

Total

300 Purchased Professional and Technical Services

330 Other Professional Services

261,343.54

Total Purchased Professional and Technical Services

\$261,343.54

Total 2350 Legal and Accounting Services

\$261,343.54

General Fund (10)

2360 Office of the Superintendent / Executive Director Services

Elementary

Secondary

Federal

Total

100 Personnel Services – Salaries

100 Personnel Services – Salaries 731,455.15

Total Personnel Services – Salaries \$731,455.15

200 Personnel Services – Employee Benefits

210 Group Insurance – Contracted Provider 2,776.09

220 Social Security Contributions 46,100.23

230 PSERS Retirement Contributions 241,576.48

250 Unemployment Compensation 13.95

260 Workers' Compensation 1,497.61

270 Group Insurance – Self-Insurance 86,259.08

280 Other Post-Employment Benefits (OPEB) 23,930.72

291 Other Retirement Plans 12,231.71

299 All Other Employee Benefits 3,923.33

Total Personnel Services – Employee Benefits \$418,309.20

300 Purchased Professional and Technical Services

330 Other Professional Services 16,175.00

Total Purchased Professional and Technical Services \$16,175.00

400 Purchased Property Services

410 Cleaning Services 10,300.08

440 Rentals 14,977.80

Total Purchased Property Services \$25,277.88

500 Other Purchased Services

530 Communications 5.22 5.23 10.45

580 Travel 3,884.73

Total Other Purchased Services \$5.22 \$5.23 \$3,895.18

600 Supplies

610 General Supplies 10,058.58

630 Food 5,396.75

640 Books and Periodicals 88.84

Total Supplies \$15,544.17

700 Property

752 Capital Equipment – Original and Additional 5,310.43

Total Property \$5,310.43

800 Other Objects

810 Dues and Fees 9,325.00

Total Other Objects \$9,325.00

Total 2360 Office of the Superintendent / Executive Director Services \$5.22 \$5.23 \$1,225,292.01

General Fund (10)

2380 Office of the Principal Services

	<u>Elementary</u>	<u>Secondary</u>	<u>Federal</u>	<u>Total</u>
100 Personnel Services – Salaries				
100 Personnel Services – Salaries	844,028.42	1,339,892.14		2,183,920.56
Total Personnel Services – Salaries	\$844,028.42	\$1,339,892.14		\$2,183,920.56
200 Personnel Services – Employee Benefits				
210 Group Insurance – Contracted Provider	3,213.06	5,225.44		8,438.50
220 Social Security Contributions	62,990.13	100,208.52		163,198.65
230 PSERS Retirement Contributions	281,194.35	433,150.43		714,344.78
250 Unemployment Compensation	33.61	39.95		73.56
260 Workers' Compensation	1,704.15	2,705.25		4,409.40
270 Group Insurance – Self-Insurance	174,629.68	235,544.25		410,173.93
280 Other Post-Employment Benefits (OPEB)	15,053.76	15,053.76		30,107.52
291 Other Retirement Plans	12,361.19	19,347.84		31,709.03
292 Health Savings Accounts	5,029.46	7,697.44		12,726.90
299 All Other Employee Benefits	5,725.05	9,588.84		15,313.89
Total Personnel Services – Employee Benefits	\$561,934.44	\$828,561.72		\$1,390,496.16
300 Purchased Professional and Technical Services				
329 Professional Educational Services – Other	5.58	1,794.42		1,800.00
Total Purchased Professional and Technical Services	\$5.58	\$1,794.42		\$1,800.00
400 Purchased Property Services				
410 Cleaning Services	1,141.49	1,169.71		2,311.20
Total Purchased Property Services	\$1,141.49	\$1,169.71		\$2,311.20
500 Other Purchased Services				
530 Communications	406.67	2,578.24		2,984.91
580 Travel	70.28	3,661.75		3,732.03
Total Other Purchased Services	\$476.95	\$6,239.99		\$6,716.94
600 Supplies				
610 General Supplies	12,739.82	17,671.24		30,411.06
630 Food	3,991.45	4,622.02		8,613.47
650 Supplies & Fees – Technology Related		50.00		50.00
Total Supplies	\$16,731.27	\$22,343.26		\$39,074.53
700 Property				
752 Capital Equipment – Original and Additional		15,416.02		15,416.02
Total Property		\$15,416.02		\$15,416.02
800 Other Objects				
810 Dues and Fees	4,195.85	4,846.35		9,042.20
890 Miscellaneous Expenditures		150.00		150.00
Total Other Objects	\$4,195.85	\$4,996.35		\$9,192.20
Total 2380 Office of the Principal Services	\$1,428,514.00	\$2,220,413.61		\$3,648,927.61

General Fund (10)

2390 Other Administration Services

Elementary

Secondary

Federal

Total

400 Purchased Property Services

440 Rentals

15,251.20

Total Purchased Property Services

\$15,251.20

600 Supplies

610 General Supplies

16,247.26

Total Supplies

\$16,247.26

Total 2390 Other Administration Services

\$31,498.46

General Fund (10)

	<u>Elementary</u>	<u>Secondary</u>	<u>Federal</u>	<u>Total</u>
2400 Support Services – Pupil Health				
100 Personnel Services – Salaries				
100 Personnel Services – Salaries			96,100.19	570,636.03
Total Personnel Services – Salaries			\$96,100.19	\$570,636.03
200 Personnel Services – Employee Benefits				
210 Group Insurance – Contracted Provider				1,335.08
220 Social Security Contributions			7,265.46	42,415.74
230 PSERS Retirement Contributions			32,771.98	192,138.64
250 Unemployment Compensation				39.56
260 Workers' Compensation			720.78	1,152.22
270 Group Insurance – Self-Insurance				111,812.00
Total Personnel Services – Employee Benefits			\$40,758.22	\$348,893.24
300 Purchased Professional and Technical Services				
329 Professional Educational Services – Other				31,161.80
330 Other Professional Services				4,550.00
Total Purchased Professional and Technical Services				\$35,711.80
400 Purchased Property Services				
430 Repairs and Maintenance Services				1,216.00
Total Purchased Property Services				\$1,216.00
500 Other Purchased Services				
530 Communications				1,418.72
580 Travel				740.94
Total Other Purchased Services				\$2,159.66
600 Supplies				
610 General Supplies				24,552.31
Total Supplies				\$24,552.31
Total 2400 Support Services – Pupil Health			\$136,858.41	\$983,169.04

General Fund (10)

2430 Dental Services

Elementary

Secondary

Federal

Total

100 Personnel Services – Salaries

100 Personnel Services – Salaries

17,850.20

Total Personnel Services – Salaries

\$17,850.20

200 Personnel Services – Employee Benefits

210 Group Insurance – Contracted Provider

81.02

220 Social Security Contributions

1,365.85

230 PSERS Retirement Contributions

6,060.79

250 Unemployment Compensation

2.79

260 Workers' Compensation

36.05

Total Personnel Services – Employee Benefits

\$7,546.50

600 Supplies

610 General Supplies

1,570.93

Total Supplies

\$1,570.93

Total 2430 Dental Services

\$26,967.63

General Fund (10)

2440 Nursing Services

	<u>Elementary</u>	<u>Secondary</u>	<u>Federal</u>	<u>Total</u>
100 Personnel Services – Salaries				
100 Personnel Services – Salaries			96,100.19	552,785.83
Total Personnel Services – Salaries			\$96,100.19	\$552,785.83
200 Personnel Services – Employee Benefits				
210 Group Insurance – Contracted Provider				1,254.06
220 Social Security Contributions			7,265.46	41,049.89
230 PSERS Retirement Contributions			32,771.98	186,077.85
250 Unemployment Compensation				36.77
260 Workers' Compensation			720.78	1,116.17
270 Group Insurance – Self-Insurance				111,812.00
Total Personnel Services – Employee Benefits			\$40,758.22	\$341,346.74
300 Purchased Professional and Technical Services				
329 Professional Educational Services – Other				31,161.80
330 Other Professional Services				4,550.00
Total Purchased Professional and Technical Services				\$35,711.80
400 Purchased Property Services				
430 Repairs and Maintenance Services				1,216.00
Total Purchased Property Services				\$1,216.00
500 Other Purchased Services				
530 Communications				1,418.72
580 Travel				350.82
Total Other Purchased Services				\$1,769.54
600 Supplies				
610 General Supplies				22,981.38
Total Supplies				\$22,981.38
Total 2440 Nursing Services			\$136,858.41	\$955,811.29

General Fund (10)

2490 Other Health Services

Elementary

Secondary

Federal

Total

500 Other Purchased Services

580 Travel

390.12

Total Other Purchased Services

\$390.12

Total 2490 Other Health Services

\$390.12

General Fund (10)

2500 Support Services – Business

Elementary Secondary Federal Total

100	<u>Personnel Services – Salaries</u>			
	100 Personnel Services – Salaries			569,377.73
Total Personnel Services – Salaries				\$569,377.73
200	<u>Personnel Services – Employee Benefits</u>			
	210 Group Insurance – Contracted Provider			2,359.91
	220 Social Security Contributions			38,710.32
	230 PSERS Retirement Contributions			192,353.47
	250 Unemployment Compensation			19.36
	260 Workers' Compensation			1,149.75
	270 Group Insurance – Self-Insurance			125,691.06
	280 Other Post-Employment Benefits (OPEB)			12,981.80
	291 Other Retirement Plans			9,280.84
	292 Health Savings Accounts			2,713.40
	299 All Other Employee Benefits			3,500.00
Total Personnel Services – Employee Benefits				\$388,759.91
300	<u>Purchased Professional and Technical Services</u>			
	330 Other Professional Services			27,142.42
	340 Technical Services			3,812.50
Total Purchased Professional and Technical Services				\$30,954.92
400	<u>Purchased Property Services</u>			
	410 Cleaning Services			486.20
	440 Rentals			528.00
Total Purchased Property Services				\$1,014.20
500	<u>Other Purchased Services</u>			
	530 Communications			4,314.25
	580 Travel			1,741.34
Total Other Purchased Services				\$6,055.59
600	<u>Supplies</u>			
	610 General Supplies			3,850.92
Total Supplies				\$3,850.92
800	<u>Other Objects</u>			
	810 Dues and Fees			6,044.80
Total Other Objects				\$6,044.80
Total 2500 Support Services – Business				\$1,006,058.07

General Fund (10)

2510 Fiscal Services

Elementary Secondary Federal Total

100	<u>Personnel Services – Salaries</u>			
	100 Personnel Services – Salaries			569,377.73
Total Personnel Services – Salaries				\$569,377.73
200	<u>Personnel Services – Employee Benefits</u>			
	210 Group Insurance – Contracted Provider			2,359.91
	220 Social Security Contributions			38,710.32
	230 PSERS Retirement Contributions			192,353.47
	250 Unemployment Compensation			19.36
	260 Workers' Compensation			1,149.75
	270 Group Insurance – Self-Insurance			125,691.06
	280 Other Post-Employment Benefits (OPEB)			12,981.80
	291 Other Retirement Plans			9,280.84
	292 Health Savings Accounts			2,713.40
	299 All Other Employee Benefits			3,500.00
Total Personnel Services – Employee Benefits				\$388,759.91
300	<u>Purchased Professional and Technical Services</u>			
	330 Other Professional Services			27,142.42
	340 Technical Services			3,812.50
Total Purchased Professional and Technical Services				\$30,954.92
400	<u>Purchased Property Services</u>			
	410 Cleaning Services			486.20
	440 Rentals			528.00
Total Purchased Property Services				\$1,014.20
500	<u>Other Purchased Services</u>			
	530 Communications			4,314.25
	580 Travel			1,741.34
Total Other Purchased Services				\$6,055.59
600	<u>Supplies</u>			
	610 General Supplies			3,850.92
Total Supplies				\$3,850.92
800	<u>Other Objects</u>			
	810 Dues and Fees			6,044.80
Total Other Objects				\$6,044.80
Total 2510 Fiscal Services				\$1,006,058.07

General Fund (10)

2511 Supervision of Fiscal Services - Head of Component

	<u>Elementary</u>	<u>Secondary</u>	<u>Federal</u>	<u>Total</u>
100 Personnel Services – Salaries				
100 Personnel Services – Salaries				280,238.78
Total Personnel Services – Salaries				\$280,238.78
200 Personnel Services – Employee Benefits				
210 Group Insurance – Contracted Provider				1,162.08
220 Social Security Contributions				17,255.93
230 PSERS Retirement Contributions				94,997.18
250 Unemployment Compensation				5.59
260 Workers' Compensation				565.92
270 Group Insurance – Self-Insurance				43,776.66
280 Other Post-Employment Benefits (OPEB)				12,981.80
291 Other Retirement Plans				4,446.42
299 All Other Employee Benefits				1,200.00
Total Personnel Services – Employee Benefits				\$176,391.58
300 Purchased Professional and Technical Services				
330 Other Professional Services				27,142.42
340 Technical Services				3,812.50
Total Purchased Professional and Technical Services				\$30,954.92
400 Purchased Property Services				
410 Cleaning Services				486.20
440 Rentals				528.00
Total Purchased Property Services				\$1,014.20
500 Other Purchased Services				
530 Communications				4,314.25
580 Travel				1,741.34
Total Other Purchased Services				\$6,055.59
600 Supplies				
610 General Supplies				3,850.92
Total Supplies				\$3,850.92
800 Other Objects				
810 Dues and Fees				6,044.80
Total Other Objects				\$6,044.80
Total 2511 Supervision of Fiscal Services - Head of Component				\$504,550.79

General Fund (10)

2513 Receiving and Disbursing Funds Services

Elementary

Secondary

Federal

Total

100 Personnel Services – Salaries

100 Personnel Services – Salaries

41,304.43

Total Personnel Services – Salaries

\$41,304.43

200 Personnel Services – Employee Benefits

210 Group Insurance – Contracted Provider

297.50

220 Social Security Contributions

3,109.90

230 PSERS Retirement Contributions

13,854.45

250 Unemployment Compensation

5.39

260 Workers' Compensation

83.38

270 Group Insurance – Self-Insurance

39,417.40

292 Health Savings Accounts

2,713.40

Total Personnel Services – Employee Benefits

\$59,481.42

Total 2513 Receiving and Disbursing Funds Services

\$100,785.85

General Fund (10)

2514 Payroll Services

100 Personnel Services – Salaries

	<u>Elementary</u>	<u>Secondary</u>	<u>Federal</u>	<u>Total</u>
100 Personnel Services – Salaries				50,269.29
Total Personnel Services – Salaries				\$50,269.29
200 Personnel Services – Employee Benefits				
210 Group Insurance – Contracted Provider				16.38
220 Social Security Contributions				3,598.58
230 PSERS Retirement Contributions				17,067.93
250 Unemployment Compensation				2.79
260 Workers' Compensation				101.52
270 Group Insurance – Self-Insurance				1,822.28
Total Personnel Services – Employee Benefits				\$22,609.48
Total 2514 Payroll Services				\$72,878.77

General Fund (10)

2515 Financial Accounting Services	<u>Elementary</u>	<u>Secondary</u>	<u>Federal</u>	<u>Total</u>
100 Personnel Services – Salaries				
100 Personnel Services – Salaries				197,565.23
Total Personnel Services – Salaries				\$197,565.23
200 Personnel Services – Employee Benefits				
210 Group Insurance – Contracted Provider				883.95
220 Social Security Contributions				14,745.91
230 PSERS Retirement Contributions				66,433.91
250 Unemployment Compensation				5.59
260 Workers' Compensation				398.93
270 Group Insurance – Self-Insurance				40,674.72
291 Other Retirement Plans				4,834.42
299 All Other Employee Benefits				2,300.00
Total Personnel Services – Employee Benefits				\$130,277.43
Total 2515 Financial Accounting Services				\$327,842.66

General Fund (10)

	<u>Elementary</u>	<u>Secondary</u>	<u>Federal</u>	<u>Total</u>
2600 Operation and Maintenance of Plant Services				
100 Personnel Services – Salaries				
100 Personnel Services – Salaries				460,759.14
Total Personnel Services – Salaries				\$460,759.14
200 Personnel Services – Employee Benefits				
210 Group Insurance – Contracted Provider				1,413.96
220 Social Security Contributions				34,298.49
230 PSERS Retirement Contributions				150,514.96
250 Unemployment Compensation				31.93
260 Workers' Compensation				929.65
270 Group Insurance – Self-Insurance				133,209.15
280 Other Post-Employment Benefits (OPEB)				12,981.80
292 Health Savings Accounts				10,673.71
Total Personnel Services – Employee Benefits				\$344,053.65
300 Purchased Professional and Technical Services				
330 Other Professional Services				9,755.50
340 Technical Services				22,200.00
350 Security / Safety Services				334,712.03
Total Purchased Professional and Technical Services				\$366,667.53
400 Purchased Property Services				
410 Cleaning Services				2,536,034.18
420 Utility Services				189,746.22
430 Repairs and Maintenance Services				281,404.07
440 Rentals				11,051.42
460 Extermination Services				11,058.00
490 Other Purchased Property Services				12,675.50
Total Purchased Property Services				\$3,041,969.39
500 Other Purchased Services				
521 Fire Insurance				138,856.20
522 Automotive Liability Insurance				6,594.50
523 General Property and Liability Insurance				104,380.00
529 Other Insurance				24,247.50
530 Communications				4,462.77
580 Travel				75.78
596 Direct Payments To Intermediate Units				232,620.00
Total Other Purchased Services				\$511,236.75
600 Supplies				
610 General Supplies	77,093.58	93,981.88		171,075.46
620 Energy				1,155,081.92
650 Supplies & Fees – Technology Related				33,365.51
Total Supplies	\$77,093.58	\$93,981.88		\$1,359,522.89
700 Property				
766 Capitalized Technology Equipment – Replacement				17,959.96
Total Property				\$17,959.96

LEA : 124150503 Avon Grove SD

Printed 11/11/2024 9:36:35 AM

General Fund (10)

2600 Operation and Maintenance of Plant Services

Elementary

Secondary

Federal

Total

800 Other Objects

810 Dues and Fees

250.00

820 Claims and Judgments Against the LEA

3,090.00

Total Other Objects

\$3,340.00

Total 2600 Operation and Maintenance of Plant Services

\$77,093.58

\$93,981.88

\$6,105,509.31

General Fund (10)

2610 Supervision of Operation and Maintenance of Plant Services	<u>Elementary</u>	<u>Secondary</u>	<u>Federal</u>	<u>Total</u>
100 Personnel Services – Salaries				
100 Personnel Services – Salaries				413,986.90
Total Personnel Services – Salaries				\$413,986.90
200 Personnel Services – Employee Benefits				
210 Group Insurance – Contracted Provider				1,256.30
220 Social Security Contributions				30,951.77
230 PSERS Retirement Contributions				134,634.26
250 Unemployment Compensation				29.13
260 Workers' Compensation				835.24
270 Group Insurance – Self-Insurance				117,365.30
280 Other Post-Employment Benefits (OPEB)				12,981.80
292 Health Savings Accounts				10,673.71
Total Personnel Services – Employee Benefits				\$308,727.51
500 Other Purchased Services				
521 Fire Insurance				138,856.20
523 General Property and Liability Insurance				104,380.00
529 Other Insurance				24,247.50
530 Communications				4,462.77
580 Travel				75.78
596 Direct Payments To Intermediate Units				168,000.00
Total Other Purchased Services				\$440,022.25
600 Supplies				
610 General Supplies	1,521.89	1,521.89		3,043.78
650 Supplies & Fees – Technology Related				13,075.00
Total Supplies	\$1,521.89	\$1,521.89		\$16,118.78
800 Other Objects				
810 Dues and Fees				250.00
Total Other Objects				\$250.00
Total 2610 Supervision of Operation and Maintenance of Plant Services	\$1,521.89	\$1,521.89		\$1,179,105.44

General Fund (10)

	<u>Elementary</u>	<u>Secondary</u>	<u>Federal</u>	<u>Total</u>
2611 Supervision of Operation and Maintenance of Plant Services – Head of Component				
500 <u>Other Purchased Services</u>				
596 Direct Payments To Intermediate Units				168,000.00
Total Other Purchased Services				\$168,000.00
Total 2611 Supervision of Operation and Maintenance of Plant Services – Head of Component				\$168,000.00

General Fund (10)

2619 Supervision of Operation and Maintenance of Plant Services – All Other Supervision

	<u>Elementary</u>	<u>Secondary</u>	<u>Federal</u>	<u>Total</u>
100 Personnel Services – Salaries				
100 Personnel Services – Salaries				413,986.90
Total Personnel Services – Salaries				\$413,986.90
200 Personnel Services – Employee Benefits				
210 Group Insurance – Contracted Provider				1,256.30
220 Social Security Contributions				30,951.77
230 PSERS Retirement Contributions				134,634.26
250 Unemployment Compensation				29.13
260 Workers' Compensation				835.24
270 Group Insurance – Self-Insurance				117,365.30
280 Other Post-Employment Benefits (OPEB)				12,981.80
292 Health Savings Accounts				10,673.71
Total Personnel Services – Employee Benefits				\$308,727.51
500 Other Purchased Services				
521 Fire Insurance				138,856.20
523 General Property and Liability Insurance				104,380.00
529 Other Insurance				24,247.50
530 Communications				4,462.77
580 Travel				75.78
Total Other Purchased Services				\$272,022.25
600 Supplies				
610 General Supplies	1,521.89	1,521.89		3,043.78
650 Supplies & Fees – Technology Related				13,075.00
Total Supplies	\$1,521.89	\$1,521.89		\$16,118.78
800 Other Objects				
810 Dues and Fees				250.00
Total Other Objects				\$250.00
Total 2619 Supervision of Operation and Maintenance of Plant Services – All Other Supervision	\$1,521.89	\$1,521.89		\$1,011,105.44

General Fund (10)

2620 Operation of Buildings Services

Elementary

Secondary

Federal

Total

300 Purchased Professional and Technical Services

330 Other Professional Services

9,755.50

350 Security / Safety Services

2,182.98

Total Purchased Professional and Technical Services

\$11,938.48

400 Purchased Property Services

410 Cleaning Services

2,173,559.09

420 Utility Services

50,730.01

430 Repairs and Maintenance Services

251,512.63

460 Extermination Services

11,058.00

490 Other Purchased Property Services

12,675.50

Total Purchased Property Services

\$2,499,535.23

600 Supplies

610 General Supplies

54,029.43

78,076.04

132,105.47

620 Energy

1,147,430.38

Total Supplies

\$54,029.43

\$78,076.04

\$1,279,535.85

Total 2620 Operation of Buildings Services

\$54,029.43

\$78,076.04

\$3,791,009.56

General Fund (10)

2630 Care and Upkeep of Grounds Services

Elementary

Secondary

Federal

Total

400 Purchased Property Services

410 Cleaning Services

362,475.09

430 Repairs and Maintenance Services

9,028.80

Total Purchased Property Services

\$371,503.89

600 Supplies

610 General Supplies

14,900.98

8,309.72

23,210.70

Total Supplies

\$14,900.98

\$8,309.72

\$23,210.70

Total 2630 Care and Upkeep of Grounds Services

\$14,900.98

\$8,309.72

\$394,714.59

General Fund (10)

	<u>Elementary</u>	<u>Secondary</u>	<u>Federal</u>	<u>Total</u>
2640 Care and Upkeep of Equipment Services				
400 <u>Purchased Property Services</u>				
430 Repairs and Maintenance Services				1,039.78
440 Rentals				11,051.42
Total Purchased Property Services				\$12,091.20
600 <u>Supplies</u>				
610 General Supplies	2,770.12	2,488.89		5,259.01
Total Supplies	\$2,770.12	\$2,488.89		\$5,259.01
Total 2640 Care and Upkeep of Equipment Services	\$2,770.12	\$2,488.89		\$17,350.21

General Fund (10)

	<u>Elementary</u>	<u>Secondary</u>	<u>Federal</u>	<u>Total</u>
2650 Vehicle Operation and Maintenance Services (Other Than Student Transportation Vehicles)				
400 <u>Purchased Property Services</u>				
430 Repairs and Maintenance Services				2,063.68
Total Purchased Property Services				\$2,063.68
500 <u>Other Purchased Services</u>				
522 Automotive Liability Insurance				6,594.50
Total Other Purchased Services				\$6,594.50
600 <u>Supplies</u>				
610 General Supplies	231.15	231.15		462.30
620 Energy				7,651.54
Total Supplies	\$231.15	\$231.15		\$8,113.84
Total 2650 Vehicle Operation and Maintenance Services (Other Than Student Transportation Vehicles)	\$231.15	\$231.15		\$16,772.02

General Fund (10)

2660 Safety and Security Services

100 Personnel Services – Salaries

	<u>Elementary</u>	<u>Secondary</u>	<u>Federal</u>	<u>Total</u>
100 Personnel Services – Salaries				46,772.24
Total Personnel Services – Salaries				\$46,772.24
200 Personnel Services – Employee Benefits				
210 Group Insurance – Contracted Provider				157.66
220 Social Security Contributions				3,346.72
230 PSERS Retirement Contributions				15,880.70
250 Unemployment Compensation				2.80
260 Workers' Compensation				94.41
270 Group Insurance – Self-Insurance				15,843.85
Total Personnel Services – Employee Benefits				\$35,326.14
300 Purchased Professional and Technical Services				
340 Technical Services				22,200.00
350 Security / Safety Services				332,529.05
Total Purchased Professional and Technical Services				\$354,729.05
400 Purchased Property Services				
430 Repairs and Maintenance Services				17,759.18
Total Purchased Property Services				\$17,759.18
500 Other Purchased Services				
596 Direct Payments To Intermediate Units				64,620.00
Total Other Purchased Services				\$64,620.00
600 Supplies				
610 General Supplies	3,640.01	3,354.19		6,994.20
650 Supplies & Fees – Technology Related				20,290.51
Total Supplies	\$3,640.01	\$3,354.19		\$27,284.71
700 Property				
766 Capitalized Technology Equipment – Replacement				17,959.96
Total Property				\$17,959.96
800 Other Objects				
820 Claims and Judgments Against the LEA				3,090.00
Total Other Objects				\$3,090.00
Total 2660 Safety and Security Services	\$3,640.01	\$3,354.19		\$567,541.28

General Fund (10)

	<u>Elementary</u>	<u>Secondary</u>	<u>Federal</u>	<u>Total</u>
2690 Other Operation and Maintenance of Plant Services				
400 <u>Purchased Property Services</u>				
420 Utility Services				139,016.21
Total Purchased Property Services				\$139,016.21
Total 2690 Other Operation and Maintenance of Plant Services				\$139,016.21

General Fund (10)

	<u>Elementary</u>	<u>Secondary</u>	<u>Federal</u>	<u>Total</u>
2700 Student Transportation Services				
100 Personnel Services – Salaries				
100 Personnel Services – Salaries				108,068.64
Total Personnel Services – Salaries				\$108,068.64
200 Personnel Services – Employee Benefits				
210 Group Insurance – Contracted Provider				351.84
220 Social Security Contributions				8,323.82
230 PSERS Retirement Contributions				36,196.42
250 Unemployment Compensation				5.59
260 Workers' Compensation				218.15
270 Group Insurance – Self-Insurance				19,904.96
299 All Other Employee Benefits				1,200.00
Total Personnel Services – Employee Benefits				\$66,200.78
400 Purchased Property Services				
430 Repairs and Maintenance Services				311.10
Total Purchased Property Services				\$311.10
500 Other Purchased Services				
513 Contracted Carriers				6,655,802.55
516 Student Transportation Services From the IU				3,294.68
522 Automotive Liability Insurance				14,642.50
530 Communications				3,320.00
Total Other Purchased Services				\$6,677,059.73
600 Supplies				
610 General Supplies				6,467.56
620 Energy				2,535.47
630 Food				315.00
650 Supplies & Fees – Technology Related				8,600.00
Total Supplies				\$17,918.03
800 Other Objects				
810 Dues and Fees				894.00
Total Other Objects				\$894.00
Total 2700 Student Transportation Services				\$6,870,452.28

General Fund (10)

2710 Supervision of Student Transportation Services

Elementary

Secondary

Federal

Total

100 Personnel Services – Salaries

100 Personnel Services – Salaries

108,068.64

Total Personnel Services – Salaries

\$108,068.64

200 Personnel Services – Employee Benefits

210 Group Insurance – Contracted Provider

351.84

220 Social Security Contributions

8,323.82

230 PSERS Retirement Contributions

36,196.42

250 Unemployment Compensation

5.59

260 Workers' Compensation

218.15

270 Group Insurance – Self-Insurance

19,904.96

299 All Other Employee Benefits

1,200.00

Total Personnel Services – Employee Benefits

\$66,200.78

500 Other Purchased Services

530 Communications

3,320.00

Total Other Purchased Services

\$3,320.00

600 Supplies

610 General Supplies

4,430.53

650 Supplies & Fees – Technology Related

8,600.00

Total Supplies

\$13,030.53

Total 2710 Supervision of Student Transportation Services

\$190,619.95

General Fund (10)

2711 Supervision of Student Transportation Services – Head of Component

Elementary

Secondary

Federal

Total

100 Personnel Services – Salaries

100 Personnel Services – Salaries

108,068.64

Total Personnel Services – Salaries

\$108,068.64

200 Personnel Services – Employee Benefits

210 Group Insurance – Contracted Provider

351.84

220 Social Security Contributions

8,323.82

230 PSERS Retirement Contributions

36,196.42

250 Unemployment Compensation

5.59

260 Workers' Compensation

218.15

270 Group Insurance – Self-Insurance

19,904.96

299 All Other Employee Benefits

1,200.00

Total Personnel Services – Employee Benefits

\$66,200.78

500 Other Purchased Services

530 Communications

3,320.00

Total Other Purchased Services

\$3,320.00

600 Supplies

610 General Supplies

4,430.53

650 Supplies & Fees – Technology Related

8,600.00

Total Supplies

\$13,030.53

Total 2711 Supervision of Student Transportation Services – Head of Component

\$190,619.95

LEA : 124150503 Avon Grove SD

Printed 11/11/2024 9:36:35 AM

General Fund (10)

2720 Vehicle Operation Services

Elementary

Secondary

Federal

Total

500 Other Purchased Services

513 Contracted Carriers

5,888,112.55

516 Student Transportation Services From the IU

3,294.68

522 Automotive Liability Insurance

14,642.50

Total Other Purchased Services

\$5,906,049.73

600 Supplies

620 Energy

2,535.47

630 Food

315.00

Total Supplies

\$2,850.47

800 Other Objects

810 Dues and Fees

894.00

Total Other Objects

\$894.00

Total 2720 Vehicle Operation Services

\$5,909,794.20

General Fund (10)

2730 Monitoring Services

Elementary

Secondary

Federal

Total

500 Other Purchased Services

513 Contracted Carriers

302,219.54

Total Other Purchased Services

\$302,219.54

Total 2730 Monitoring Services

\$302,219.54

General Fund (10)

	<u>Elementary</u>	<u>Secondary</u>	<u>Federal</u>	<u>Total</u>
2740 Vehicle Servicing and Maintenance Services				
400 <u>Purchased Property Services</u>				
430 Repairs and Maintenance Services				311.10
Total Purchased Property Services				\$311.10
600 <u>Supplies</u>				
610 General Supplies				2,037.03
Total Supplies				\$2,037.03
Total 2740 Vehicle Servicing and Maintenance Services				\$2,348.13

General Fund (10)

2750 Nonpublic Transportation

Elementary

Secondary

Federal

Total

500 Other Purchased Services

513 Contracted Carriers

465,470.46

Total Other Purchased Services

\$465,470.46

Total 2750 Nonpublic Transportation

\$465,470.46

General Fund (10)

2800 Support Services – Central

Elementary

Secondary

Federal

Total

100 Personnel Services – Salaries

100 Personnel Services – Salaries 980,900.28

Total Personnel Services – Salaries \$980,900.28

200 Personnel Services – Employee Benefits

210 Group Insurance – Contracted Provider 3,893.97

220 Social Security Contributions 72,462.93

230 PSERS Retirement Contributions 327,110.45

240 Tuition Reimbursement 55,851.07

250 Unemployment Compensation 42.08

260 Workers' Compensation 1,979.96

270 Group Insurance – Self-Insurance 189,397.65

291 Other Retirement Plans 11,755.15

292 Health Savings Accounts 5,410.75

299 All Other Employee Benefits 5,557.27

Total Personnel Services – Employee Benefits \$673,461.28

300 Purchased Professional and Technical Services

330 Other Professional Services 12,719.30

340 Technical Services 191,681.65

360 Employee Training and Development Services 14,371.79

Total Purchased Professional and Technical Services \$218,772.74

400 Purchased Property Services

430 Repairs and Maintenance Services (191.25)

440 Rentals 2,748.72

Total Purchased Property Services \$2,557.47

500 Other Purchased Services

520 Insurance – General 24,369.00

530 Communications 33,196.91

549 Other Advertising/Public Relations 200.00

550 Printing and Binding 7,228.39

580 Travel 11,748.20

596 Direct Payments To Intermediate Units 149,504.43

Total Other Purchased Services \$226,246.93

600 Supplies

610 General Supplies 9,264.11

630 Food 342.59

650 Supplies & Fees – Technology Related 275,438.48

Total Supplies \$285,045.18

800 Other Objects

810 Dues and Fees 2,830.00

Total Other Objects \$2,830.00

Total 2800 Support Services – Central \$2,389,813.88

General Fund (10)

2810 Planning, Research, Development and Evaluation Services

Elementary

Secondary

Federal

Total

100 Personnel Services – Salaries

100 Personnel Services – Salaries

729,327.63

Total Personnel Services – Salaries

\$729,327.63

200 Personnel Services – Employee Benefits

210 Group Insurance – Contracted Provider

2,787.39

220 Social Security Contributions

54,150.85

230 PSERS Retirement Contributions

241,999.30

250 Unemployment Compensation

36.49

260 Workers' Compensation

1,472.06

270 Group Insurance – Self-Insurance

159,253.85

291 Other Retirement Plans

6,741.70

292 Health Savings Accounts

5,410.75

299 All Other Employee Benefits

3,157.27

Total Personnel Services – Employee Benefits

\$475,009.66

300 Purchased Professional and Technical Services

340 Technical Services

140,811.51

Total Purchased Professional and Technical Services

\$140,811.51

400 Purchased Property Services

430 Repairs and Maintenance Services

(191.25)

Total Purchased Property Services

(\$191.25)

500 Other Purchased Services

520 Insurance – General

24,369.00

530 Communications

26,243.66

580 Travel

996.48

Total Other Purchased Services

\$51,609.14

600 Supplies

610 General Supplies

6,086.82

630 Food

342.59

650 Supplies & Fees – Technology Related

248,095.41

Total Supplies

\$254,524.82

800 Other Objects

810 Dues and Fees

965.00

Total Other Objects

\$965.00

Total 2810 Planning, Research, Development and Evaluation Services

\$1,652,056.51

General Fund (10)

2820 Information Services

Elementary

Secondary

Federal

Total

300 Purchased Professional and Technical Services

330 Other Professional Services

12,719.30

Total Purchased Professional and Technical Services

\$12,719.30

500 Other Purchased Services

530 Communications

3,311.64

550 Printing and Binding

7,228.39

596 Direct Payments To Intermediate Units

149,504.43

Total Other Purchased Services

\$160,044.46

600 Supplies

610 General Supplies

21.99

650 Supplies & Fees – Technology Related

2,778.84

Total Supplies

\$2,800.83

Total 2820 Information Services

\$175,564.59

General Fund (10)

	<u>Elementary</u>	<u>Secondary</u>	<u>Federal</u>	<u>Total</u>
2823 Public Information Services				
300 <u>Purchased Professional and Technical Services</u>				
330 Other Professional Services				12,719.30
Total Purchased Professional and Technical Services				\$12,719.30
500 <u>Other Purchased Services</u>				
530 Communications				3,311.64
550 Printing and Binding				7,228.39
596 Direct Payments To Intermediate Units				149,504.43
Total Other Purchased Services				\$160,044.46
600 <u>Supplies</u>				
610 General Supplies				21.99
650 Supplies & Fees – Technology Related				2,778.84
Total Supplies				\$2,800.83
Total 2823 Public Information Services				\$175,564.59

General Fund (10)

2830 Staff Services

	<u>Elementary</u>	<u>Secondary</u>	<u>Federal</u>	<u>Total</u>
100 Personnel Services – Salaries				
100 Personnel Services – Salaries				251,572.65
Total Personnel Services – Salaries				\$251,572.65
200 Personnel Services – Employee Benefits				
210 Group Insurance – Contracted Provider				1,106.58
220 Social Security Contributions				18,312.08
230 PSERS Retirement Contributions				85,111.15
240 Tuition Reimbursement				55,851.07
250 Unemployment Compensation				5.59
260 Workers' Compensation				507.90
270 Group Insurance – Self-Insurance				30,143.80
291 Other Retirement Plans				5,013.45
299 All Other Employee Benefits				2,400.00
Total Personnel Services – Employee Benefits				\$198,451.62
300 Purchased Professional and Technical Services				
340 Technical Services				254.27
360 Employee Training and Development Services				14,371.79
Total Purchased Professional and Technical Services				\$14,626.06
500 Other Purchased Services				
530 Communications				63.96
549 Other Advertising/Public Relations				200.00
580 Travel				10,751.72
Total Other Purchased Services				\$11,015.68
600 Supplies				
610 General Supplies				2,702.58
650 Supplies & Fees – Technology Related				24,564.23
Total Supplies				\$27,266.81
800 Other Objects				
810 Dues and Fees				1,865.00
Total Other Objects				\$1,865.00
Total 2830 Staff Services				\$504,797.82

General Fund (10)

2831 Supervision of Staff Services

Elementary Secondary Federal Total

100 Personnel Services – Salaries				
100 Personnel Services – Salaries				251,572.65
Total Personnel Services – Salaries				\$251,572.65
200 Personnel Services – Employee Benefits				
210 Group Insurance – Contracted Provider				1,106.58
220 Social Security Contributions				18,312.08
230 PSERS Retirement Contributions				85,111.15
250 Unemployment Compensation				5.59
260 Workers' Compensation				507.90
270 Group Insurance – Self-Insurance				30,143.80
291 Other Retirement Plans				5,013.45
299 All Other Employee Benefits				2,400.00
Total Personnel Services – Employee Benefits				\$142,600.55
500 Other Purchased Services				
530 Communications				63.96
549 Other Advertising/Public Relations				200.00
580 Travel				107.19
Total Other Purchased Services				\$371.15
600 Supplies				
610 General Supplies				687.58
650 Supplies & Fees – Technology Related				24,564.23
Total Supplies				\$25,251.81
800 Other Objects				
810 Dues and Fees				1,865.00
Total Other Objects				\$1,865.00
Total 2831 Supervision of Staff Services				\$421,661.16

General Fund (10)

	<u>Elementary</u>	<u>Secondary</u>	<u>Federal</u>	<u>Total</u>
2834 Staff Development Services – Non-Instructional, Certified Staff Only				
200 Personnel Services – Employee Benefits				
240 Tuition Reimbursement				48,804.79
Total Personnel Services – Employee Benefits				\$48,804.79
300 Purchased Professional and Technical Services				
360 Employee Training and Development Services				8,147.89
Total Purchased Professional and Technical Services				\$8,147.89
500 Other Purchased Services				
580 Travel				7,160.50
Total Other Purchased Services				\$7,160.50
Total 2834 Staff Development Services – Non-Instructional, Certified Staff Only				\$64,113.18

LEA : 124150503 Avon Grove SD

Printed 11/11/2024 9:36:35 AM

General Fund (10)

2835 Health Services

600 Supplies

610 General Supplies

	<u>Elementary</u>	<u>Secondary</u>	<u>Federal</u>	<u>Total</u>
Total Supplies				2,015.00
Total 2835 Health Services				\$2,015.00

General Fund (10)

	<u>Elementary</u>	<u>Secondary</u>	<u>Federal</u>	<u>Total</u>
2836 Staff Development Services – Non-Instructional, Non-Certified Staff Only				
200 Personnel Services – Employee Benefits				
240 Tuition Reimbursement				7,046.28
Total Personnel Services – Employee Benefits				\$7,046.28
300 Purchased Professional and Technical Services				
360 Employee Training and Development Services				6,223.90
Total Purchased Professional and Technical Services				\$6,223.90
500 Other Purchased Services				
580 Travel				3,484.03
Total Other Purchased Services				\$3,484.03
Total 2836 Staff Development Services – Non-Instructional, Non-Certified Staff Only				\$16,754.21

General Fund (10)

2839 Other Staff Services

Elementary

Secondary

Federal

Total

300 Purchased Professional and Technical Services

340 Technical Services

254.27

Total Purchased Professional and Technical Services

\$254.27

Total 2839 Other Staff Services

\$254.27

General Fund (10)

	<u>Elementary</u>	<u>Secondary</u>	<u>Federal</u>	<u>Total</u>
2840 Data Processing Services				
300 <u>Purchased Professional and Technical Services</u>				
340 Technical Services				50,615.87
Total Purchased Professional and Technical Services				\$50,615.87
400 <u>Purchased Property Services</u>				
440 Rentals				2,748.72
Total Purchased Property Services				\$2,748.72
500 <u>Other Purchased Services</u>				
530 Communications				3,577.65
Total Other Purchased Services				\$3,577.65
600 <u>Supplies</u>				
610 General Supplies				452.72
Total Supplies				\$452.72
Total 2840 Data Processing Services				\$57,394.96

General Fund (10)

2900 Other Support Services

Elementary

Secondary

Federal

Total

500 Other Purchased Services

595 IU Payments By Withholding

29,620.85

Total Other Purchased Services

\$29,620.85

800 Other Objects

899 Pass-Through Funds

168,803.10

Total Other Objects

\$168,803.10

Total 2900 Other Support Services

\$198,423.95

General Fund (10)

2910 Support Services Not Listed Elsewhere In the 2000 Series

Elementary

Secondary

Federal

Total

500 Other Purchased Services

595 IU Payments By Withholding

29,620.85

Total Other Purchased Services

\$29,620.85

Total 2910 Support Services Not Listed Elsewhere In the 2000 Series

\$29,620.85

LEA : 124150503 Avon Grove SD

Printed 11/11/2024 9:36:35 AM

General Fund (10)

2990 Pass-Through Funds

Elementary

Secondary

Federal

Total

800 Other Objects

899 Pass-Through Funds

168,803.10

Total Other Objects

\$168,803.10

Total 2990 Pass-Through Funds

\$168,803.10

LEA : 124150503 Avon Grove SD

Printed 11/11/2024 9:36:41 AM

General Fund (10)

3000 Operation of Non-Instructional Services

Total

100 Personnel Services – Salaries

100 Personnel Services – Salaries 792,802.90

Total Personnel Services – Salaries \$792,802.90

200 Personnel Services – Employee Benefits

210 Group Insurance – Contracted Provider 278.26

220 Social Security Contributions 60,044.50

230 PSERS Retirement Contributions 253,907.24

250 Unemployment Compensation 121.77

260 Workers' Compensation 1,602.27

270 Group Insurance – Self-Insurance 21,425.28

Total Personnel Services – Employee Benefits \$337,379.32

300 Purchased Professional and Technical Services

330 Other Professional Services 73,326.61

390 Other Purchased Professional and Technical Services 1,500.00

Total Purchased Professional and Technical Services \$74,826.61

400 Purchased Property Services

410 Cleaning Services 25,376.40

430 Repairs and Maintenance Services 14,707.82

440 Rentals 2,683.87

Total Purchased Property Services \$42,768.09

500 Other Purchased Services

510 Student Transportation Services 153,557.02

520 Insurance – General 10,970.00

530 Communications 702.48

580 Travel 12,074.02

591 Services Purchased Locally 19,885.41

Total Other Purchased Services \$197,188.93

600 Supplies

610 General Supplies 202,368.81

620 Energy 816.84

630 Food 5,695.91

640 Books and Periodicals 1,283.70

650 Supplies & Fees – Technology Related 10,956.66

Total Supplies \$221,121.92

700 Property

752 Capital Equipment – Original and Additional 22,435.00

Total Property \$22,435.00

800 Other Objects

810 Dues and Fees 27,869.75

890 Miscellaneous Expenditures 11,089.00

Total Other Objects \$38,958.75

Total 3000 Operation of Non-Instructional Services

\$1,727,481.52

General Fund (10)

3200 Student Activities

Elementary Secondary Federal Total

100	<u>Personnel Services – Salaries</u>				
	100 Personnel Services – Salaries				784,603.23
Total Personnel Services – Salaries					\$784,603.23
200	<u>Personnel Services – Employee Benefits</u>				
	210 Group Insurance – Contracted Provider				278.26
	220 Social Security Contributions				59,420.90
	230 PSERS Retirement Contributions				251,121.35
	250 Unemployment Compensation				121.24
	260 Workers' Compensation				1,585.69
	270 Group Insurance – Self-Insurance				21,425.28
Total Personnel Services – Employee Benefits					\$333,952.72
300	<u>Purchased Professional and Technical Services</u>				
	330 Other Professional Services				73,326.61
	390 Other Purchased Professional and Technical Services				1,500.00
Total Purchased Professional and Technical Services					\$74,826.61
400	<u>Purchased Property Services</u>				
	410 Cleaning Services				25,376.40
	430 Repairs and Maintenance Services				14,707.82
	440 Rentals				2,683.87
Total Purchased Property Services					\$42,768.09
500	<u>Other Purchased Services</u>				
	510 Student Transportation Services				153,557.02
	520 Insurance – General				10,970.00
	530 Communications				702.48
	580 Travel				12,074.02
	591 Services Purchased Locally				2,020.00
Total Other Purchased Services					\$179,323.52
600	<u>Supplies</u>				
	610 General Supplies				201,654.42
	620 Energy				816.84
	630 Food				4,620.46
	650 Supplies & Fees – Technology Related				10,956.66
Total Supplies					\$218,048.38
700	<u>Property</u>				
	752 Capital Equipment – Original and Additional				22,435.00
Total Property					\$22,435.00
800	<u>Other Objects</u>				
	810 Dues and Fees				27,869.75
	890 Miscellaneous Expenditures				398.79
Total Other Objects					\$28,268.54
Total 3200 Student Activities					\$1,684,226.09

General Fund (10)

	<u>Elementary</u>	<u>Secondary</u>	<u>Federal</u>	<u>Total</u>
3300 Community Services				
100 Personnel Services – Salaries				
100 Personnel Services – Salaries			3,971.00	8,199.67
Total Personnel Services – Salaries			\$3,971.00	\$8,199.67
200 Personnel Services – Employee Benefits				
220 Social Security Contributions			300.04	623.60
230 PSERS Retirement Contributions			542.31	2,785.89
250 Unemployment Compensation			0.10	0.53
260 Workers' Compensation			8.04	16.58
Total Personnel Services – Employee Benefits			\$850.49	\$3,426.60
500 Other Purchased Services				
591 Services Purchased Locally				17,865.41
Total Other Purchased Services				\$17,865.41
600 Supplies				
610 General Supplies			368.51	714.39
630 Food			1,075.45	1,075.45
640 Books and Periodicals			1,283.70	1,283.70
Total Supplies			\$2,727.66	\$3,073.54
Total 3300 Community Services			\$7,549.15	\$32,565.22

LEA : 124150503 Avon Grove SD

Printed 11/11/2024 9:36:41 AM

General Fund (10)

3400 Scholarships and Awards

Elementary

Secondary

Federal

Total

800 Other Objects

890 Miscellaneous Expenditures

10,690.21

Total Other Objects

\$10,690.21

Total 3400 Scholarships and Awards

\$10,690.21

General Fund (10)

5000 Other Expenditures and Financing Uses

Total

800 Other Objects

830 Interest 4,719,012.21

Total Other Objects \$4,719,012.21

900 Other Uses of Funds

910 Redemption of Principal 4,304,754.81

939 Other Fund Transfers 7,097,173.75

Total Other Uses of Funds \$11,401,928.56

Total 5000 Other Expenditures and Financing Uses \$16,120,940.77

General Fund (10)

	<u>Elementary</u>	<u>Secondary</u>	<u>Federal</u>	<u>Total</u>
5100 Debt Service / Other Expenditures and Financing Uses				
800 Other Objects				
830 Interest				4,719,012.21
Total Other Objects				\$4,719,012.21
900 Other Uses of Funds				
910 Redemption of Principal				4,304,754.81
Total Other Uses of Funds				\$4,304,754.81
Total 5100 Debt Service / Other Expenditures and Financing Uses				\$9,023,767.02

General Fund (10)

	<u>Elementary</u>	<u>Secondary</u>	<u>Federal</u>	<u>Total</u>
5110 Debt Service				
800 Other Objects				
830 Interest				4,705,125.00
Total Other Objects				\$4,705,125.00
900 Other Uses of Funds				
910 Redemption of Principal				4,175,000.00
Total Other Uses of Funds				\$4,175,000.00
Total 5110 Debt Service				\$8,880,125.00

General Fund (10)

5140 Leases and Other Right-to-Use Arrangements

Elementary

Secondary

Federal

Total

800 Other Objects

830 Interest

13,887.21

Total Other Objects

\$13,887.21

900 Other Uses of Funds

910 Redemption of Principal

129,754.81

Total Other Uses of Funds

\$129,754.81

Total 5140 Leases and Other Right-to-Use Arrangements

\$143,642.02

LEA : 124150503 Avon Grove SD

Printed 11/11/2024 9:36:45 AM

General Fund (10)

	<u>Elementary</u>	<u>Secondary</u>	<u>Federal</u>	<u>Total</u>
5200 Interfund Transfers – Out				
900 <u>Other Uses of Funds</u>				
939 Other Fund Transfers				7,097,173.75
Total Other Uses of Funds				\$7,097,173.75
Total 5200 Interfund Transfers – Out				\$7,097,173.75

LEA : 124150503 Avon Grove SD

Printed 11/11/2024 9:36:45 AM

General Fund (10)

5230 Capital Projects Fund Transfers

Elementary

Secondary

Federal

Total

900 Other Uses of Funds

939 Other Fund Transfers

7,097,173.75

Total Other Uses of Funds

\$7,097,173.75

Total 5230 Capital Projects Fund Transfers

\$7,097,173.75

Other Capital Projects Fund (39)

2000 Support Services

Total

300 Purchased Professional and Technical Services

330 Other Professional Services 24,181.93

Total Purchased Professional and Technical Services \$24,181.93

400 Purchased Property Services

430 Repairs and Maintenance Services 55,977.72

440 Rentals 169,110.05

Total Purchased Property Services \$225,087.77

500 Other Purchased Services

529 Other Insurance 17,754.77

Total Other Purchased Services \$17,754.77

600 Supplies

610 General Supplies 24,077.00

Total Supplies \$24,077.00

700 Property

752 Capital Equipment – Original and Additional 261,098.90

756 Capitalized Technology Equipment – Original 17,905.50

762 Capitalized Equipment - Replacement 98,260.47

766 Capitalized Technology Equipment – Replacement 510,056.92

Total Property \$887,321.79

800 Other Objects

810 Dues and Fees 1,984.97

Total Other Objects \$1,984.97

Total 2000 Support Services

\$1,180,408.23

Other Capital Projects Fund (39)

2300 Support Services – Administration

Elementary

Secondary

Federal

Total

300 Purchased Professional and Technical Services

330 Other Professional Services

24,181.93

Total Purchased Professional and Technical Services

\$24,181.93

800 Other Objects

810 Dues and Fees

1,984.97

Total Other Objects

\$1,984.97

Total 2300 Support Services – Administration

\$26,166.90

LEA : 124150503 Avon Grove SD

Printed 11/11/2024 9:36:38 AM

Other Capital Projects Fund (39)

2350 Legal and Accounting Services

Elementary

Secondary

Federal

Total

300 Purchased Professional and Technical Services

330 Other Professional Services

24,181.93

Total Purchased Professional and Technical Services

\$24,181.93

Total 2350 Legal and Accounting Services

\$24,181.93

LEA : 124150503 Avon Grove SD

Printed 11/11/2024 9:36:38 AM

Other Capital Projects Fund (39)

2390 Other Administration Services

Elementary

Secondary

Federal

Total

800 Other Objects

810 Dues and Fees

1,984.97

Total Other Objects

\$1,984.97

Total 2390 Other Administration Services

\$1,984.97

LEA : 124150503 Avon Grove SD

Printed 11/11/2024 9:36:38 AM

Other Capital Projects Fund (39)

2600 Operation and Maintenance of Plant Services

Elementary

Secondary

Federal

Total

400 Purchased Property Services

430 Repairs and Maintenance Services

55,977.72

440 Rentals

169,110.05

Total Purchased Property Services

\$225,087.77

500 Other Purchased Services

529 Other Insurance

17,754.77

Total Other Purchased Services

\$17,754.77

600 Supplies

610 General Supplies

12,038.50

12,038.50

24,077.00

Total Supplies

\$12,038.50

\$12,038.50

\$24,077.00

700 Property

752 Capital Equipment – Original and Additional

136,943.90

762 Capitalized Equipment - Replacement

98,260.47

Total Property

\$235,204.37

Total 2600 Operation and Maintenance of Plant Services

\$12,038.50

\$12,038.50

\$502,123.91

LEA : 124150503 Avon Grove SD

Printed 11/11/2024 9:36:38 AM

Other Capital Projects Fund (39)

2610 Supervision of Operation and Maintenance of Plant Services

Elementary

Secondary

Federal

Total

500 Other Purchased Services

529 Other Insurance

17,754.77

Total Other Purchased Services

\$17,754.77

Total 2610 Supervision of Operation and Maintenance of Plant Services

\$17,754.77

LEA : 124150503 Avon Grove SD

Printed 11/11/2024 9:36:38 AM

Other Capital Projects Fund (39)

2619 Supervision of Operation and Maintenance of Plant Services – All Other Supervision

Elementary

Secondary

Federal

Total

500 Other Purchased Services

529 Other Insurance

17,754.77

Total Other Purchased Services

\$17,754.77

Total 2619 Supervision of Operation and Maintenance of Plant Services – All Other Supervision

\$17,754.77

LEA : 124150503 Avon Grove SD

Printed 11/11/2024 9:36:38 AM

Other Capital Projects Fund (39)

2620 Operation of Buildings Services

400 Purchased Property Services

- 430 Repairs and Maintenance Services
- 440 Rentals

	<u>Elementary</u>	<u>Secondary</u>	<u>Federal</u>	<u>Total</u>
Total Purchased Property Services				\$225,087.77

600 Supplies

- 610 General Supplies

	<u>Elementary</u>	<u>Secondary</u>	<u>Federal</u>	<u>Total</u>
Total Supplies	\$12,038.50	\$12,038.50		\$24,077.00

700 Property

- 752 Capital Equipment – Original and Additional
- 762 Capitalized Equipment - Replacement

				\$235,204.37
Total Property				\$235,204.37

Total 2620 Operation of Buildings Services	\$12,038.50	\$12,038.50		\$484,369.14
---	--------------------	--------------------	--	---------------------

LEA : 124150503 Avon Grove SD

Printed 11/11/2024 9:36:38 AM

Other Capital Projects Fund (39)

2700 Student Transportation Services

Elementary

Secondary

Federal

Total

700 Property

752 Capital Equipment – Original and Additional

124,155.00

Total Property				\$124,155.00
Total 2700 Student Transportation Services				\$124,155.00

Other Capital Projects Fund (39)

2740 Vehicle Servicing and Maintenance Services

Elementary

Secondary

Federal

Total

700 Property

752 Capital Equipment – Original and Additional

124,155.00

Total Property

\$124,155.00

Total 2740 Vehicle Servicing and Maintenance Services

\$124,155.00

LEA : 124150503 Avon Grove SD

Printed 11/11/2024 9:36:38 AM

Other Capital Projects Fund (39)

2800 Support Services – Central

Elementary

Secondary

Federal

Total

700 Property

756 Capitalized Technology Equipment – Original

17,905.50

766 Capitalized Technology Equipment – Replacement

510,056.92

Total Property

\$527,962.42

Total 2800 Support Services – Central

\$527,962.42

LEA : 124150503 Avon Grove SD

Printed 11/11/2024 9:36:38 AM

Other Capital Projects Fund (39)

2810 Planning, Research, Development and Evaluation Services

Elementary

Secondary

Federal

Total

700 Property

756 Capitalized Technology Equipment – Original

17,905.50

766 Capitalized Technology Equipment – Replacement

510,056.92

Total Property

\$527,962.42

Total 2810 Planning, Research, Development and Evaluation Services

\$527,962.42

Other Capital Projects Fund (39)

4000 Facilities Acquisition, Construction and Improvement Services

Total

300 Purchased Professional and Technical Services

330 Other Professional Services	424,506.89
390 Other Purchased Professional and Technical Services	13,640.00

Total Purchased Professional and Technical Services	\$438,146.89
--	---------------------

400 Purchased Property Services

410 Cleaning Services	15,378.10
430 Repairs and Maintenance Services	635,892.07
440 Rentals	14,485.29
450 Construction Services	2,556,248.99
490 Other Purchased Property Services	156,739.50

Total Purchased Property Services	\$3,378,743.95
--	-----------------------

600 Supplies

610 General Supplies	2,416.50
----------------------	----------

Total Supplies	\$2,416.50
-----------------------	-------------------

700 Property

710 Land and Improvements	536,701.20
752 Capital Equipment – Original and Additional	246,838.86
756 Capitalized Technology Equipment – Original	97,942.41

Total Property	\$881,482.47
-----------------------	---------------------

Total 4000 Facilities Acquisition, Construction and Improvement Services	\$4,700,789.81
---	-----------------------

Other Capital Projects Fund (39)

4100 Site Acquisition Services – Original and Additional

Elementary

Secondary

Federal

Total

300 Purchased Professional and Technical Services

330 Other Professional Services

827.50

Total Purchased Professional and Technical Services

\$827.50

Total 4100 Site Acquisition Services – Original and Additional

\$827.50

LEA : 124150503 Avon Grove SD

Printed 11/11/2024 9:36:43 AM

Other Capital Projects Fund (39)

4200 Existing Site Improvement Services

Elementary

Secondary

Federal

Total

300 Purchased Professional and Technical Services

330 Other Professional Services

86,779.59

Total Purchased Professional and Technical Services

\$86,779.59

700 Property

710 Land and Improvements

536,701.20

Total Property

\$536,701.20

Total 4200 Existing Site Improvement Services

\$623,480.79

LEA : 124150503 Avon Grove SD

Printed 11/11/2024 9:36:43 AM

Other Capital Projects Fund (39)

4300 Architecture and Engineering Services / Educational Specifications Development – Original and Additional

Elementary

Secondary

Federal

Total

300 Purchased Professional and Technical Services

330 Other Professional Services

19,362.52

Total Purchased Professional and Technical Services

\$19,362.52

Total 4300 Architecture and Engineering Services / Educational Specifications Development – Original and Additional

\$19,362.52

Other Capital Projects Fund (39)

4400 Architecture and Engineering Services / Educational Specifications – Improvements

Elementary

Secondary

Federal

Total

300 Purchased Professional and Technical Services

330 Other Professional Services

207,588.36

Total Purchased Professional and Technical Services

\$207,588.36

Total 4400 Architecture and Engineering Services / Educational Specifications – Improvements

\$207,588.36

LEA : 124150503 Avon Grove SD

Printed 11/11/2024 9:36:43 AM

Other Capital Projects Fund (39)

4500 Building Acquisition and Construction Services – Original and Additional	<u>Elementary</u>	<u>Secondary</u>	<u>Federal</u>	<u>Total</u>
300 <u>Purchased Professional and Technical Services</u>				
330 Other Professional Services				420.25
390 Other Purchased Professional and Technical Services				13,640.00
Total Purchased Professional and Technical Services				\$14,060.25
400 <u>Purchased Property Services</u>				
450 Construction Services				62,792.26
Total Purchased Property Services				\$62,792.26
600 <u>Supplies</u>				
610 General Supplies				475.00
Total Supplies				\$475.00
700 <u>Property</u>				
752 Capital Equipment – Original and Additional				47,152.67
756 Capitalized Technology Equipment – Original				2,685.62
Total Property				\$49,838.29
Total 4500 Building Acquisition and Construction Services – Original and Additional				\$127,165.80

Other Capital Projects Fund (39)

4600 Existing Building Improvement Services

Elementary

Secondary

Federal

Total

300 Purchased Professional and Technical Services

330 Other Professional Services

109,528.67

Total Purchased Professional and Technical Services

\$109,528.67

400 Purchased Property Services

410 Cleaning Services

15,378.10

430 Repairs and Maintenance Services

635,892.07

440 Rentals

14,485.29

450 Construction Services

2,493,456.73

490 Other Purchased Property Services

156,739.50

Total Purchased Property Services

\$3,315,951.69

600 Supplies

610 General Supplies

1,941.50

Total Supplies

\$1,941.50

700 Property

752 Capital Equipment – Original and Additional

199,686.19

756 Capitalized Technology Equipment – Original

95,256.79

Total Property

\$294,942.98

Total 4600 Existing Building Improvement Services

\$3,722,364.84

	<u>General Fund(10)</u>	<u>Student Sponsored Activity Fund(21)</u>	<u>Public Purpose Trust(27)</u>	<u>Other Compt Approved (28)</u>	<u>Athletic / Activity(29)</u>
1000 Instruction					
1100 Regular Programs - Elementary / Secondary	44,975,150.72				
1200 Special Programs - Elementary / Secondary	15,232,596.43				
1300 Vocational Education	2,791,801.29				
1400 Other Instructional Programs - Elementary / Secondary	82,221.21				
1500 Nonpublic School Programs	5,571.19				
Total Instruction	\$63,087,340.84				
2000 Support Services					
2100 Support Services - Students	5,329,952.43				
2200 Support Services - Instructional Staff	3,052,885.15				
2300 Support Services - Administration	5,437,570.23				
2400 Support Services - Pupil Health	983,169.04				
2500 Support Services - Business	1,006,058.07				
2600 Operation and Maintenance of Plant Services	6,105,509.31				
2700 Student Transportation Services	6,870,452.28				
2800 Support Services - Central	2,389,813.88				
2900 Other Support Services	198,423.95				
Total Support Services	\$31,373,834.34				
3000 Operation of Non-Instructional Services					
3200 Student Activities	1,684,226.09				
3300 Community Services	32,565.22				
3400 Scholarships and Awards	10,690.21				
Total Operation of Non-Instructional Services	\$1,727,481.52				
4000 Facilities Acquisition, Construction and Improvement Services					
4100 Site Acquisition Services - Original and Additional					
4200 Existing Site Improvement Services					
4300 Architecture and Engineering Services / Educational Specifications Development - Original and Additional					
4400 Architecture and Engineering Services / Educational Specifications - Improvements					
4500 Building Acquisition and Construction Services - Original and Additional					
4600 Existing Building Improvement Services					
Total Facilities Acquisition, Construction and Improvement Services					
5000 Other Expenditures and Financing Uses					
5100 Debt Service / Other Expenditures and Financing Uses	9,023,767.02				
5200 Interfund Transfers - Out	7,097,173.75				

<u>Capital Reserve (690.</u>	<u>Capital Reserve (1431)(32)</u>	<u>Other Capital Projects</u>	<u>Debt Service(40)</u>	<u>Permanent(90)</u>
<u>1850)(31)</u>		<u>Fund(39)</u>		

1000 Instruction				
1100 Regular Programs - Elementary / Secondary				
1200 Special Programs - Elementary / Secondary				
1300 Vocational Education				
1400 Other Instructional Programs - Elementary / Secondary				
1500 Nonpublic School Programs				

Total Instruction				
--------------------------	--	--	--	--

2000 Support Services				
2100 Support Services - Students				
2200 Support Services - Instructional Staff				
2300 Support Services - Administration			26,166.90	
2400 Support Services - Pupil Health				
2500 Support Services - Business				
2600 Operation and Maintenance of Plant Services			502,123.91	
2700 Student Transportation Services			124,155.00	
2800 Support Services - Central			527,962.42	
2900 Other Support Services				

Total Support Services			\$1,180,408.23	
-------------------------------	--	--	-----------------------	--

3000 Operation of Non-Instructional Services				
3200 Student Activities				
3300 Community Services				
3400 Scholarships and Awards				

Total Operation of Non-Instructional Services				
--	--	--	--	--

4000 Facilities Acquisition, Construction and Improvement Services				
4100 Site Acquisition Services - Original and Additional			827.50	
4200 Existing Site Improvement Services			623,480.79	
4300 Architecture and Engineering Services / Educational Specifications Development - Original and Additional			19,362.52	
4400 Architecture and Engineering Services / Educational Specifications - Improvements			207,588.36	
4500 Building Acquisition and Construction Services - Original and Additional			127,165.80	
4600 Existing Building Improvement Services			3,722,364.84	

Total Facilities Acquisition, Construction and Improvement Services			\$4,700,789.81	
--	--	--	-----------------------	--

5000 Other Expenditures and Financing Uses				
5100 Debt Service / Other Expenditures and Financing Uses				
5200 Interfund Transfers - Out				

Total

1000 Instruction	
1100 Regular Programs - Elementary / Secondary	44,975,150.72
1200 Special Programs - Elementary / Secondary	15,232,596.43
1300 Vocational Education	2,791,801.29
1400 Other Instructional Programs - Elementary / Secondary	82,221.21
1500 Nonpublic School Programs	5,571.19

Total Instruction \$63,087,340.84

2000 Support Services	
2100 Support Services - Students	5,329,952.43
2200 Support Services - Instructional Staff	3,052,885.15
2300 Support Services - Administration	5,463,737.13
2400 Support Services - Pupil Health	983,169.04
2500 Support Services - Business	1,006,058.07
2600 Operation and Maintenance of Plant Services	6,607,633.22
2700 Student Transportation Services	6,994,607.28
2800 Support Services - Central	2,917,776.30
2900 Other Support Services	198,423.95

Total Support Services \$32,554,242.57

3000 Operation of Non-Instructional Services	
3200 Student Activities	1,684,226.09
3300 Community Services	32,565.22
3400 Scholarships and Awards	10,690.21

Total Operation of Non-Instructional Services \$1,727,481.52

4000 Facilities Acquisition, Construction and Improvement Services	
4100 Site Acquisition Services - Original and Additional	827.50
4200 Existing Site Improvement Services	623,480.79
4300 Architecture and Engineering Services / Educational Specifications Development - Original and Additional	19,362.52
4400 Architecture and Engineering Services / Educational Specifications - Improvements	207,588.36
4500 Building Acquisition and Construction Services - Original and Additional	127,165.80
4600 Existing Building Improvement Services	3,722,364.84

Total Facilities Acquisition, Construction and Improvement Services \$4,700,789.81

5000 Other Expenditures and Financing Uses	
5100 Debt Service / Other Expenditures and Financing Uses	9,023,767.02
5200 Interfund Transfers - Out	7,097,173.75

	<u>General Fund(10)</u>	<u>Student Sponsored Activity Fund(21)</u>	<u>Public Purpose Trust(27)</u>	<u>Other Compt Approved (28)</u>	<u>Athletic / Activity(29)</u>
Total Other Expenditures and Financing Uses	\$16,120,940.77				
TOTAL ACTUAL EXPENDITURES & OTHER FINANCING USES	\$112,309,597.47				

<u>Capital Reserve (690.1850)(31)</u>	<u>Capital Reserve (1431)(32)</u>	<u>Other Capital Projects Fund(39)</u>	<u>Debt Service(40)</u>	<u>Permanent(90)</u>
---------------------------------------	-----------------------------------	--	-------------------------	----------------------

Total Other Expenditures and Financing Uses	
TOTAL ACTUAL EXPENDITURES & OTHER FINANCING USES	\$5,881,198.04

Total

Total Other Expenditures and Financing Uses	\$16,120,940.77
TOTAL ACTUAL EXPENDITURES & OTHER FINANCING USES	\$118,190,795.51

LEA : 124150503 Avon Grove SD

Printed 11/11/2024 9:36:57 AM

PSERS Salary Data (Salary Data should relate to the General Fund only)

Amount Description	Amount
Total Salary Base for salaries subject to PSERS withholding	36,952,551.92
Total Federally Funded salaries subject to PSERS withholding	528,314.76
	<hr/>

Title I Expenditure Data

Amount Description	Amount
Expenditures Funded with Current Title I Funds	518,091.06
Total Title I Expenditure Data	\$518,091.06
	<hr/>

Title IV Revenue Data

Amount Description	Amount
Revenue from Title IV-A-1: Student Support and Academic Enrichment Grants	37,056.12
	<hr/>

1.	<u>Current Special Education Expenditures within Function 1000</u> See list of exclusions in the note below.	7,817,558.51
2.	<u>Current Special Education Expenditures within Function 2000</u> See list of exclusions in the note below.	3,788,706.92
2A.	<u>Current Special Education Expenditures within Sub-Function 2100</u> This data should also be included in line 2 above. See list of exclusions in the note below.	1,580,420.95
2B.	<u>Current Special Education Expenditures within Sub-Function 2200</u> This data should also be included in line 2 above. See list of exclusions in the note below.	426,974.96
2C.	<u>Current Special Education Expenditures within Sub-Function 2700</u> This data should also be included in line 2 above. See list of exclusions in the note below.	1,618,164.38
3.	<u>Current Special Education Expenditures within Sub-Function 3100</u> See list of exclusions in the note below.	
4.	<u>Current Special Education Expenditures within Sub-Function 3200</u> See list of exclusions in the note below.	

Note: The Current Special Education Expenditure amounts for each line should be calculated as follows:

- * Include the total expenditures for special education costs from all governmental funds and the food service fund 51 for the function/sub-function requested
- * Exclude data from sub-functions: 1243,1450,1500,1600,1807,2280,2450,2750,2990
- * Exclude data from objects: 322,511,512,516,561,562,564,566,592,593,594,595,596,597,700,830,899

Benefits for Staff Relative to Collective Bargaining Agreements

	OBJECT	COVERED	NOT COVERED	TOTAL
10 General Fund				
	211 Medical Insurance			
	212 Dental Insurance			
	215 Eye Care Insurance			
	216 Prescription Insurance			
	271 Self-Insurance Medical Benefits	5,781,209.55	745,695.06	6,526,904.61
	272 Self-Insurance Dental Benefits	290,007.14	41,586.18	331,593.32
	275 Self-Insurance Eye Care Benefits	74,935.24	10,949.76	85,885.00
	276 Self-Insurance Prescription Benefits			
	FUND TOTAL	\$6,146,151.93	\$798,231.00	\$6,944,382.93
50 Enterprise Fund				
	211 Medical Insurance			
	212 Dental Insurance			
	215 Eye Care Insurance			
	216 Prescription Insurance			
	271 Self-Insurance Medical Benefits	125,190.85	18,090.57	143,281.42
	272 Self-Insurance Dental Benefits	7,997.54	1,037.40	9,034.94
	275 Self-Insurance Eye Care Benefits	2,063.58	271.92	2,335.50
	276 Self-Insurance Prescription Benefits			
	FUND TOTAL	\$135,251.97	\$19,399.89	\$154,651.86
60 Internal Service Fund				
	211 Medical Insurance			
	212 Dental Insurance			
	215 Eye Care Insurance			
	216 Prescription Insurance			
	271 Self-Insurance Medical Benefits	5,008,422.45	688,532.63	5,696,955.08
	272 Self-Insurance Dental Benefits	308,877.47	42,462.92	351,340.39
	275 Self-Insurance Eye Care Benefits	55,066.94	7,570.33	62,637.27
	276 Self-Insurance Prescription Benefits	993,900.52	136,636.43	1,130,536.95
	FUND TOTAL	\$6,366,267.38	\$875,202.31	\$7,241,469.69
Total of All Funds		\$12,647,671.28	\$1,692,833.20	\$14,340,504.48

LEA : 124150503 Avon Grove SD

Printed 11/11/2024 9:37:03 AM

Function	Special Education (Prior Year)	Nonspecial Education (Prior Year)	Total (Prior Year)	Special Education (Current Year)	Nonspecial Education (Current Year)	Total (Current Year)
2120 Guidance Services	323,362.47	2,263,537.32	2,586,899.79	360,815.91	2,391,646.76	2,752,462.67
2140 Psychological Services	920,653.04	48,455.42	969,108.46	726,609.50	38,242.61	764,852.11
2150 Speech Pathology and Audiology Services	516,249.56	27,171.03	543,420.59	492,995.54	25,947.13	518,942.67
2160 Social Work Services						
2260 Instruction and Curriculum Development Services	428,347.72	1,357,882.17	1,786,229.89	429,644.90	1,376,280.62	1,805,925.52
2350 Legal and Accounting Services	52,027.62	177,773.14	229,800.76	37,850.86	223,492.68	261,343.54
2420 Medical Services						
2440 Nursing Services	128,451.70	899,161.90	1,027,613.60	125,295.77	830,515.52	955,811.29
2700 Student Transportation Services	1,474,066.22	4,912,731.77	6,386,797.99	1,618,164.38	5,252,287.90	6,870,452.28
Total	\$3,843,158.33	\$9,686,712.75	\$13,529,871.08	\$3,791,376.86	\$10,138,413.22	\$13,929,790.08

LEA : 124150503 Avon Grove SD

Printed 11/11/2024 9:37:05 AM

(PRINCIPAL AMOUNTS ONLY)

GOVERNMENTAL FUNDS/ ACTIVITIES

	Short-Term Borrowing	General Obligation Bonds/Notes	Authority Building Obligations	Leases, Other Right to Use Arrangements	Extended Term Financing Agreements	Other Long Term Debt/Liabilities	OPEB, Comp Abs, Net Pension Liab	Total
1. Debt at Beginning of Fiscal Year		117,600,000.00		342,129.52			127,284,774.00	245,226,903.52
2. Additional Debt Incurred During Year							2,294,604.00	2,294,604.00
3. Retirements and Repayments		4,175,000.00		129,754.81			2,499,015.00	6,803,769.81
4. Debt at End of Fiscal Year		113,425,000.00		212,374.71			127,080,363.00	240,717,737.71
5. Accreted Interest at End Of Fiscal Year								
6. Total Debt and Accreted Interest		113,425,000.00		212,374.71			127,080,363.00	240,717,737.71
7. Current Portion P&I - Due within 1 year		8,876,000.00		138,262.02			101,913.00	9,116,175.02
8. Interest Paid during current fiscal year		4,705,125.00		13,887.21				4,719,012.21

(PRINCIPAL AMOUNTS ONLY)

PROPRIETARY FUNDS

	Short-Term Borrowing	General Obligation Bonds/Notes	Authority Building Obligations	Leases, Other Right to Use Arrangements	Extended Term Financing Agreements	Other Long Term Debt/Liabilities	OPEB, Comp Abs, Net Pension Liab	Total
1. Debt at Beginning of Fiscal Year							1,972,175.00	1,972,175.00
2. Additional Debt Incurred During Year							44,674.00	44,674.00
3. Retirements and Repayments								
4. Debt at End of Fiscal Year							2,016,849.00	2,016,849.00
5. Accreted Interest at End Of Fiscal Year								
6. Total Debt and Accreted Interest							2,016,849.00	2,016,849.00
7. Current Portion P&I - Due within 1 year							6,384.00	6,384.00
8. Interest Paid during current fiscal year								

Total Principal and Interest Payments Made by Your School - All Funds

Function	Fund		Principal (910)	Principal (920)	Interest (830)	Total (Principal +Interest)	Misc Other Uses (990)
5110	10	General Fund	4,175,000.00		4,705,125.00	8,880,125.00	
5110	20	Special Revenue Funds					
5110	30	Capital Projects Funds					
5110	40	Debt Service Fund					
5110	90	Permanent Fund					
5120	10	General Fund					
5120	20	Special Revenue Funds					
5120	30	Capital Projects Funds					
5120	40	Debt Service Fund					
5140	10	General Fund	129,754.81		13,887.21	143,642.02	
5140	20	Special Revenue Funds					
5140	30	Capital Projects Funds					
5140	40	Debt Service Fund					
5140	90	Permanent Fund					
Total Debt Payments - Governmental Funds			\$4,304,754.81		\$4,719,012.21	\$9,023,767.02	

Function	Fund		Principal (910)	Principal (920)	Interest (830)	Total (Principal +Interest)
5110	50	Enterprise Fund				
5110	60	Internal Service Fund				
5120	50	Enterprise Fund				
5120	60	Internal Service Fund				
5140	50	Enterprise Fund				
5140	60	Internal Service Fund				
Total Debt Payments - Proprietary Funds						

LEA : 124150503 Avon Grove SD

Printed 11/11/2024 9:37:05 AM

Debt Details
Governmental Funds/ Activities

Debt Category	Debt Issue Date (MM/YYYY)	Principal Amounts Only			Debt at End of Fiscal Year	Current Portion Due Within One Year (Principal and Interest)	Interest Paid During Fiscal Year
		Debt at Beginning of Fiscal Year	Additions	Reductions / Repayments			
General Obligation Bonds/Notes – CIB	04/2022	24,210,000.00		890,000.00	23,320,000.00	1,834,400.00	950,600.00
General Obligation Bonds/Notes – CIB	03/2021	49,815,000.00		100,000.00	49,715,000.00	1,970,100.00	1,876,075.00
General Obligation Bonds/Notes – CIB	04/2021	6,965,000.00		250,000.00	6,715,000.00	523,400.00	271,100.00
General Obligation Bonds/Notes – CIB	05/2021	3,135,000.00		595,000.00	2,540,000.00	682,250.00	89,250.00
General Obligation Bonds/Notes – CIB	12/2018	33,475,000.00		2,340,000.00	31,135,000.00	3,865,850.00	1,518,100.00
Leases and Other Right to Use Arrangements		342,129.52		129,754.81	212,374.71	138,262.02	13,887.21
Compensated Absences		1,370,779.00		17,929.00	1,352,850.00	101,913.00	
Net Pension Liability		104,592,692.00	2,294,604.00		106,887,296.00		
Other Post-Employment Benefits (OPEB)		21,321,303.00		2,481,086.00	18,840,217.00		
Totals for Debt Entered:		\$245,226,903.52	\$2,294,604.00	\$6,803,769.81	\$240,717,737.71	\$9,116,175.02	\$4,719,012.21

Bond Details
Proprietary Funds

Debt Category	Debt Issue Date (MM/YYYY)	Principal Amounts Only			Debt at End of Fiscal Year	Current Portion Due Within One Year (Principal and Interest)	Interest Paid During Fiscal Year
		Debt at Beginning of Fiscal Year	Additions	Reductions / Repayments			
Compensated Absences		54,436.00	3,966.00		58,402.00	6,384.00	
Net Pension Liability		1,841,308.00	40,396.00		1,881,704.00		
Other Post-Employment Benefits (OPEB)		76,431.00	312.00		76,743.00		
Totals for Debt Entered:		\$1,972,175.00	\$44,674.00		\$2,016,849.00	\$6,384.00	

General Fund (10)

Section 1: Tuition/Purchased Services as Reported within Expenditure Detail

	Amount
Tuition Reported in General Fund Expenditures 1000-560	10,308,422.12
Purchased Services in General Fund Expenditures 1000-594 and 1000-597	4,789.50
Section 1 Total	\$10,313,211.62

Section 2: Tuition Paid to Institution Types During Fiscal Year

	Tuition Paid For Nonspecial Education	Tuition Paid For Special Education	Total
1 1306 Institutions			
2 Institutionalized Children's Programs			
3 Juveniles Incarcerated in Adult Facilities			
4 Residential Treatment Facilities	4,988.54	2,100.00	7,088.54
5 Other Local Education Agencies		144,180.30	144,180.30
6 Brick and Mortar Charter Schools	5,782,399.92	2,542,050.80	8,324,450.72
7 Cyber Charter Schools	649,358.31	477,657.34	1,127,015.65
8 Career and Technology Centers	185,113.29		185,113.29
9 Approved Private Schools		310,504.04	310,504.04
10 PA Chartered Schools for the Deaf and Blind		6,180.00	6,180.00
11 Private Residential Rehabilitative Institutions		3,108.09	3,108.09
12 Juvenile Detention Centers			
13 Special Program Jointures			
14 Other Tuition Not Included Elsewhere In This Section		205,570.99	205,570.99
Section 2 Total	\$6,621,860.06	\$3,691,351.56	\$10,313,211.62

Food Service / Cafeteria Operations Fund (51)

2000 Support Services

300 Purchased Professional and Technical Services

360 Employee Training and Development Services

Total

1,255.08

Total Purchased Professional and Technical Services

\$1,255.08

Total 2000 Support Services

\$1,255.08

LEA : 124150503 Avon Grove SD

Printed 11/11/2024 9:37:12 AM

Food Service / Cafeteria Operations Fund (51)

2800 Support Services – Central

Elementary

Secondary

Federal

Total

300 Purchased Professional and Technical Services

360 Employee Training and Development Services

1,255.08

Total Purchased Professional and Technical Services

\$1,255.08

Total 2800 Support Services – Central

\$1,255.08

Food Service / Cafeteria Operations Fund (51)

2830 Staff Services

Elementary

Secondary

Federal

Total

300 Purchased Professional and Technical Services

360 Employee Training and Development Services

1,255.08

Total Purchased Professional and Technical Services

\$1,255.08

Total 2830 Staff Services

\$1,255.08

Food Service / Cafeteria Operations Fund (51)

2836 Staff Development Services – Non-Instructional, Non-Certified Staff Only

Elementary

Secondary

Federal

Total

300 Purchased Professional and Technical Services

360 Employee Training and Development Services

1,255.08

Total Purchased Professional and Technical Services

\$1,255.08

Total 2836 Staff Development Services – Non-Instructional, Non-Certified Staff Only

\$1,255.08

Food Service / Cafeteria Operations Fund (51)

3000 Operation of Non-Instructional Services

	<u>Total</u>
100 Personnel Services – Salaries	
100 Personnel Services – Salaries	807,039.48
Total Personnel Services – Salaries	\$807,039.48
200 Personnel Services – Employee Benefits	
210 Group Insurance – Contracted Provider	1,719.26
220 Social Security Contributions	61,405.38
230 PSERS Retirement Contributions	239,422.19
250 Unemployment Compensation	102.83
260 Workers’ Compensation	1,627.88
270 Group Insurance – Self-Insurance	154,651.86
291 Other Retirement Plans	2,596.32
292 Health Savings Accounts	7,707.00
Total Personnel Services – Employee Benefits	\$469,232.72
300 Purchased Professional and Technical Services	
330 Other Professional Services	1,800.00
390 Other Purchased Professional and Technical Services	202.24
Total Purchased Professional and Technical Services	\$2,002.24
400 Purchased Property Services	
430 Repairs and Maintenance Services	30,036.69
Total Purchased Property Services	\$30,036.69
500 Other Purchased Services	
530 Communications	601.72
540 Advertising	63.00
580 Travel	2,879.94
Total Other Purchased Services	\$3,544.66
600 Supplies	
610 General Supplies	103,239.84
630 Food	1,353,282.41
Total Supplies	\$1,456,522.25
700 Property	
740 Depreciation	19,898.35
Total Property	\$19,898.35
800 Other Objects	
810 Dues and Fees	505.00
Total Other Objects	\$505.00
Total 3000 Operation of Non-Instructional Services	\$2,788,781.39

Food Service / Cafeteria Operations Fund (51)

	<u>Elementary</u>	<u>Secondary</u>	<u>Federal</u>	<u>Total</u>
3100 Food Services				
100 Personnel Services – Salaries				
100 Personnel Services – Salaries				807,039.48
Total Personnel Services – Salaries				\$807,039.48
200 Personnel Services – Employee Benefits				
210 Group Insurance – Contracted Provider				1,719.26
220 Social Security Contributions				61,405.38
230 PSERS Retirement Contributions				239,422.19
250 Unemployment Compensation				102.83
260 Workers' Compensation				1,627.88
270 Group Insurance – Self-Insurance				154,651.86
291 Other Retirement Plans				2,596.32
292 Health Savings Accounts				7,707.00
Total Personnel Services – Employee Benefits				\$469,232.72
300 Purchased Professional and Technical Services				
330 Other Professional Services				1,800.00
390 Other Purchased Professional and Technical Services				202.24
Total Purchased Professional and Technical Services				\$2,002.24
400 Purchased Property Services				
430 Repairs and Maintenance Services				30,036.69
Total Purchased Property Services				\$30,036.69
500 Other Purchased Services				
530 Communications				601.72
540 Advertising				63.00
580 Travel				2,879.94
Total Other Purchased Services				\$3,544.66
600 Supplies				
610 General Supplies				103,239.84
630 Food				1,353,282.41
Total Supplies				\$1,456,522.25
700 Property				
740 Depreciation				19,898.35
Total Property				\$19,898.35
800 Other Objects				
810 Dues and Fees				505.00
Total Other Objects				\$505.00
Total 3100 Food Services				\$2,788,781.39

Internal Service Fund (60)

2000 Support Services

Total

200 Personnel Services – Employee Benefits

270 Group Insurance – Self-Insurance

7,241,469.69

Total Personnel Services – Employee Benefits

\$7,241,469.69

Total 2000 Support Services

\$7,241,469.69

LEA : 124150503 Avon Grove SD

Printed 11/11/2024 9:37:16 AM

Internal Service Fund (60)

2800 Support Services – Central

Elementary

Secondary

Federal

Total

200 Personnel Services – Employee Benefits

270 Group Insurance – Self-Insurance

7,241,469.69

Total Personnel Services – Employee Benefits

\$7,241,469.69

Total 2800 Support Services – Central

\$7,241,469.69

Internal Service Fund (60)

2830 Staff Services

Elementary

Secondary

Federal

Total

200 Personnel Services – Employee Benefits

270 Group Insurance – Self-Insurance

7,241,469.69

Total Personnel Services – Employee Benefits

\$7,241,469.69

Total 2830 Staff Services

\$7,241,469.69

Internal Service Fund (60)

2835 Health Services

Elementary

Secondary

Federal

Total

200 Personnel Services – Employee Benefits

270 Group Insurance – Self-Insurance

7,241,469.69

Total Personnel Services – Employee Benefits

\$7,241,469.69

Total 2835 Health Services

\$7,241,469.69

	<u>Food Service(51)</u>	<u>Child Care Operations(52)</u>	<u>Other Enterprise(58)</u>	<u>Internal Service(60)</u>	<u>Total</u>
2000 Support Services					
2800 Support Services - Central	1,255.08			7,241,469.69	7,242,724.77
Total Support Services	\$1,255.08			\$7,241,469.69	\$7,242,724.77
3000 Operation of Non-Instructional Services					
3100 Food Services	2,788,781.39				2,788,781.39
Total Operation of Non-Instructional Services	\$2,788,781.39				\$2,788,781.39
TOTAL ACTUAL EXPENDITURES & OTHER FINANCING USES	\$2,790,036.47			\$7,241,469.69	\$10,031,506.16

LEA : 124150503 Avon Grove SD

Printed 11/11/2024 9:37:29 AM

Fund	School	School Number	Local Personnel	Local Nonpersonnel	State Personnel	State Nonpersonnel	Federal Personnel	Federal Nonpersonnel	Total	Explanation
10										
	Avon Grove HS	1367	13,781,258.90	4,340,009.56	7,154,698.86	2,253,165.81	178,376.28	39,421.68	27,746,931.09	
	Avon Grove Intrmd Sch	1365	10,569,422.77	3,348,839.51	5,487,237.23	1,738,588.50	403,700.02	65,622.59	21,613,410.62	
	Avon Grove MS	5216	9,357,743.75	2,820,249.04	4,858,180.16	1,464,164.69	148,922.38	23,964.94	18,673,224.96	
	Penn London El Sch	7323	5,183,206.05	1,379,276.79	2,690,920.96	716,067.39	475,827.74	37,951.65	10,483,250.58	
Total			38,891,631.47	11,888,374.90	20,191,037.21	6,171,986.39	1,206,826.42	166,960.86	78,516,817.25	