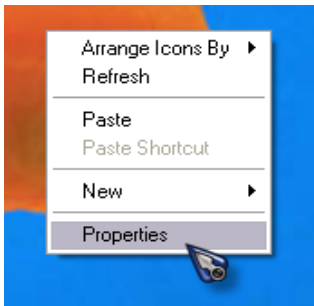


# Windows XP – Switching the Appearance (boxes/windows) and Start Menu looks from **XP** to **Classic** (Windows 2000) and back

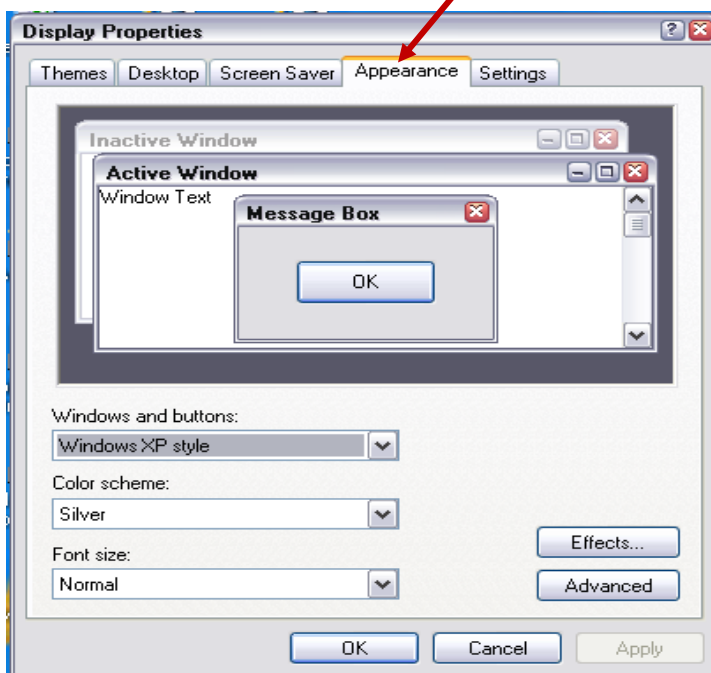
---

**To change the desktop** - Starting in Windows XP Style view/look

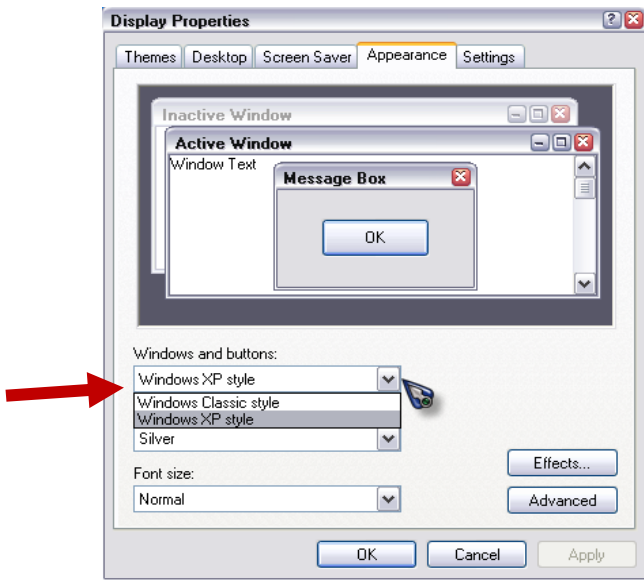
1. Right click on your desktop
2. Select **Properties** from the drop down



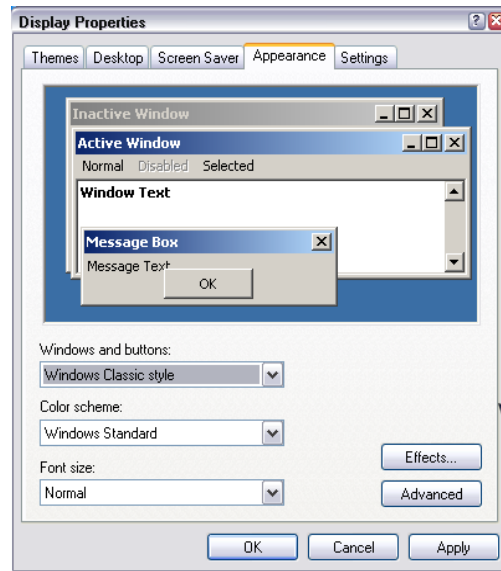
3. Using the tabs at the top select **Appearance**



- Using the **Windows and Buttons** drop down select either *Windows XP Style* or *Windows Classic Style*

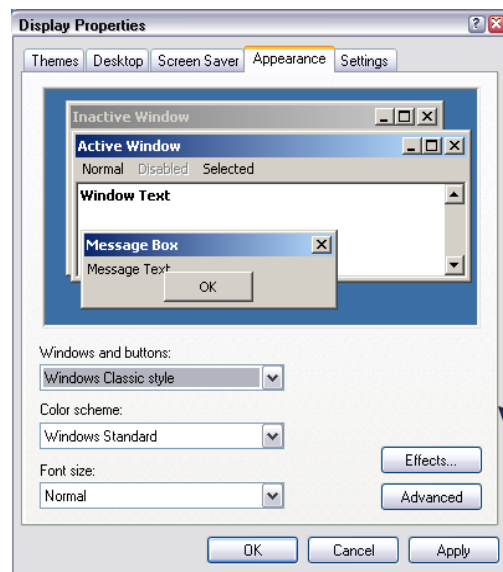


Windows XP Style



Windows Classic Style

- Make a selection and click **Apply**
- Click **Ok**



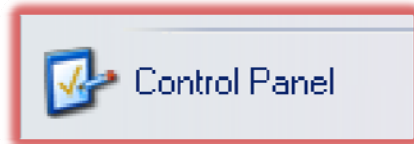
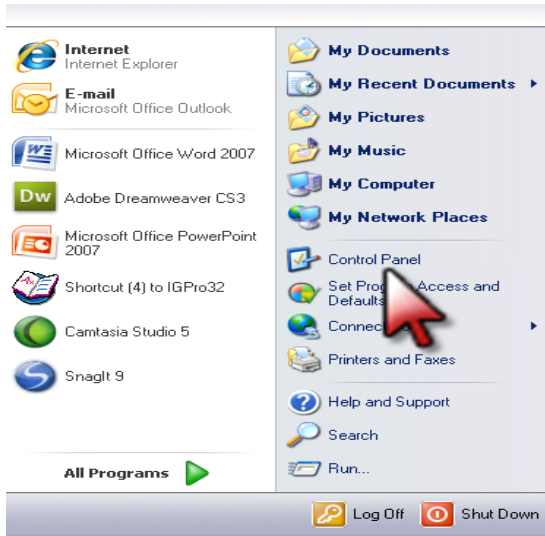
6 ↑ 5

## Changing the Start Menu - Starting in Windows XP Style view/look

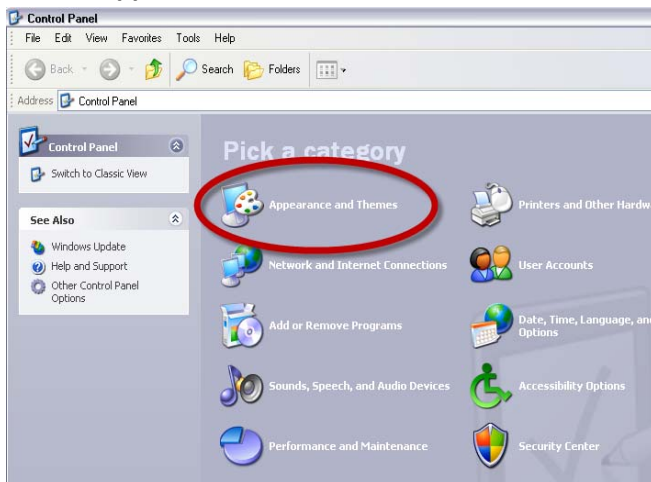
1. Click on the **Start** button



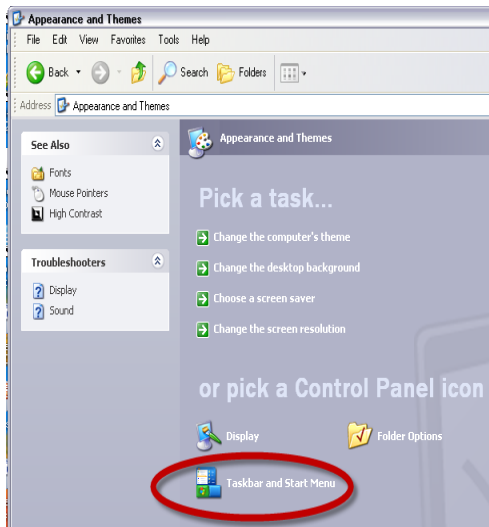
2. Click on **Control Panel**



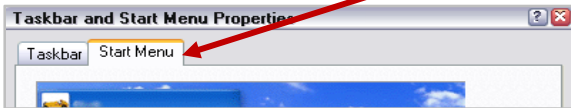
3. Click on **Appearance and Themes**



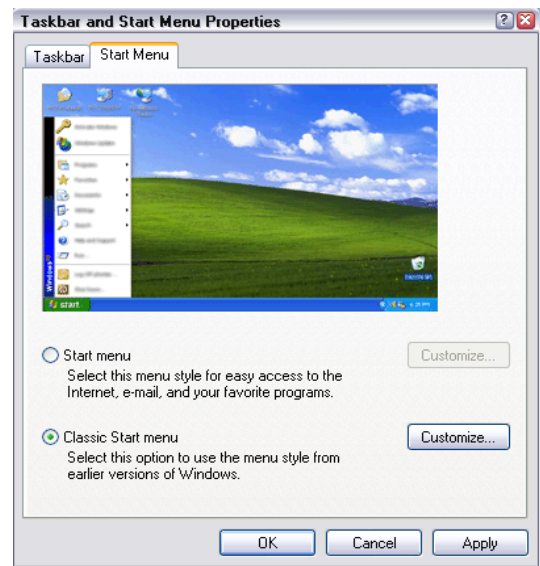
4. Click on **Taskbar and Start Menu**



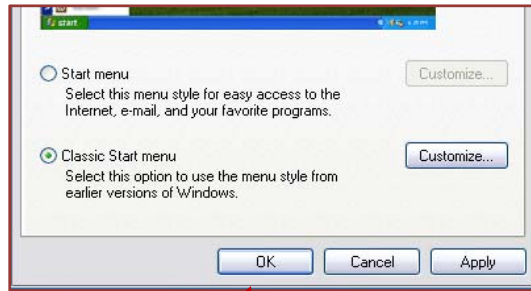
5. Using the tabs at the top click on **Start Menu**



6. Click the button beside **Start menu** or **Classic Start Menu** (windows 2000) and a preview will appear



7. Click **Apply** at bottom
8. Click **OK** at bottom



8

7