

# Avon Grove

## Feasibility Study

### SETTING THE FRAMEWORK

- ❖ Look at Prior Work
- ❖ Discuss the Salient Points
- ❖ Discuss Issues and Goals
- ❖ Outline Next Steps

Avon Grove

Feasibility Study

**PRIOR WORK**

25 August 2005

---

D W K C B

ARCHITECTS

GR	K	1	2	3	4	5	6	7	8	9	10	11	12	
NOW	PL	PL	PL	IE	IE	IE	IE	MS	MS	HS	HS	HS	HS	
1A	PL	PL	PL	PL										
	MA (add)	MA (add)	MA (add)	MA (add)	IE	IE	IE	HS	HS	NH (new)	NH (new)	NH (new)	NH (new)	
1B	PL	PL	PL	PL										
	MA (add)	MA (add)	MA (add)	MA (add)	IE	IE	IE	HS	HS	HS	NH (new)	NH (new)	NH (new)	
2	PL	PL	PL	IE	IE	IE	IE							
	MS	MS	MS	MS	MS	MS	MS	NM (new)	NM (new)	HA (add)	HA (add)	HA (add)	HA (add)	
3	PL	PL	PL	PL										
	NE (new)	NE (new)	NE (new)	NE (new)	IE	IE	IE	MA (add)	MA (add)	HA (add)	HA (add)	HA (add)	HA (add)	
4	PL	PL	PL	PL	PL									
	KE (add)	KE (add)	KE (add)	KE (add)	KE (add)									
	NE (new)	NE (new)	NE (new)	NE (new)	NE (new)	IE	IE	IE	MA (add)	MA (add)	HS	HS	HS	
5	PL	PL	PL											
			IE	IE	IE	IE		NM (new)	NM (new)	NM (new)	MA (add)	HS	HS	HS
6	PL	PL	PL	PL										
	KE (add)	KE (add)	KE (add)	KE (add)										
				IE	IE	IE	IE	MA (add)	MA (add)	N9 (new)	HS	HS	HS	
7	PL	PL	PL	PL	PL	PL								
	KE (add)	KE (add)	KE (add)	KE (add)	KE (add)	KE (add)								
	NE (new)	NE (new)	NE (new)	NE (new)	NE (new)	NE (new)								
	NE2(new)	NE2(new)	NE2(new)	NE2(new)	NE2(new)	NE2(new)	IA (add)	IA (add)	MA (add)	MA (add)	HS	HS	HS	
8	PL	PL	PL	PL	PL	PL	PL							
	KE (add)	KE (add)	KE (add)	KE (add)	KE (add)	KE (add)	KE (add)							
	MA (add)	MA (add)	MA (add)	MA (add)	MA (add)	MA (add)	MA (add)							
	NE (new)	NE (new)	NE (new)	NE (new)	NE (new)	NE (new)	NE (new)	IE	IE	IE	HS	HS	HS	

GR	K	1	2	3	4	5	6	7	8	9	10	11	12
NOW	PL	PL	PL	IE	IE	IE	IE	MS	MS	HS	HS	HS	HS
9	PA (add)	PA (add)	PA (add)	PA (add)	PA (add)	PA (add)	PA (add)	PA (add)	PA (add)	PA (add)			
	KE (add)	KE (add)	KE (add)	KE (add)	KE (add)	KE (add)	KE (add)	KE (add)	KE (add)	KE (add)			
	IA (add)	IA (add)	IA (add)	IA (add)	IA (add)	IA (add)	IA (add)	IA (add)	IA (add)	IA (add)			
	NE (new)	NE (new)	NE (new)	NE (new)	NE (new)	NE (new)	NE (new)	NE (new)	NE (new)	NE (new)	MA (add)	HS	HS
10	PL	PL	PL	PL	PL								
	KE (add)	KE (add)	KE (add)	KE (add)	KE (add)								
	NE (new)	NE (new)	NE (new)	NE (new)	NE (new)	MA (add)	MA (add)	IA (add)	IA (add)	IA (add)	HS	HS	HS
11	PL	PL	PL	PL	PL	PL							
	MA (add)	MA (add)	MA (add)	MA (add)	MA (add)	MA (add)							
	NE (new)	NE (new)	NE (new)	NE (new)	NE (new)	NE (new)	HS	HS	HS	IA (add)	IA (add)	IA (add)	IA (add)
12	PL	PL	PL	PL	PL								
	KE (add)	KE (add)	KE (add)	KE (add)	KE (add)								
	NE (new)	NE (new)	NE (new)	NE (new)	NE (new)	MA (add)	MA (add)	HS	HS	HS	IA (add)	IA (add)	IA (add)
12A	PL	PL	PL	PL	PL								
	KE (add)	KE (add)	KE (add)	KE (add)	KE (add)								
	NE (new)	NE (new)	NE (new)	NE (new)	NE (new)	MA (add)	MA (add)	HS	HS	HS	IA (add)	IA (add)	IA (add)

**LOOKED AT MULTIPLE OPTIONS  
INFINITE POSSIBILITIES EXIST**

# Avon Grove

## Feasibility Study

# Current Capacity and Projected Enrollment by Building

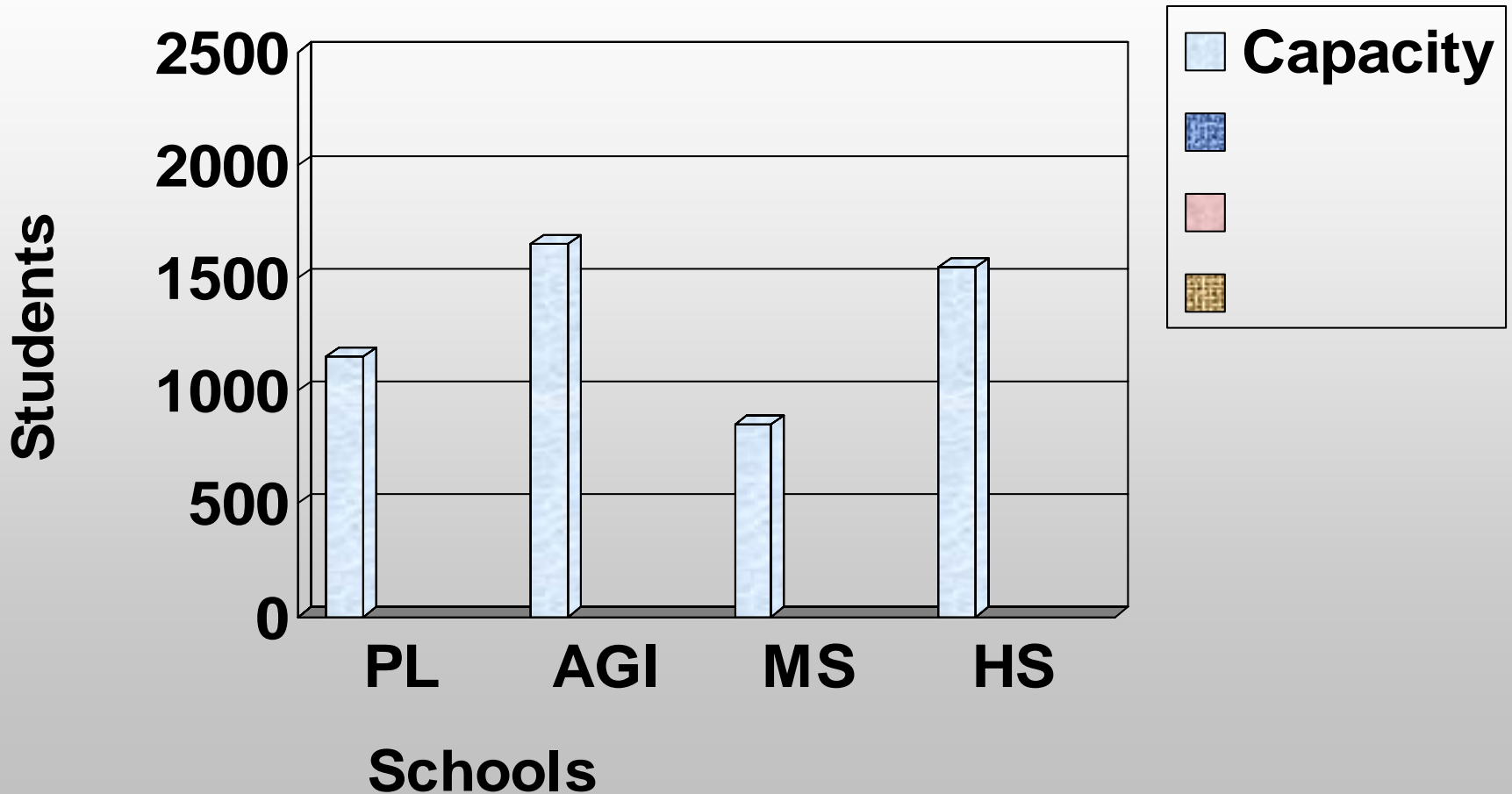
25 August 2005

---

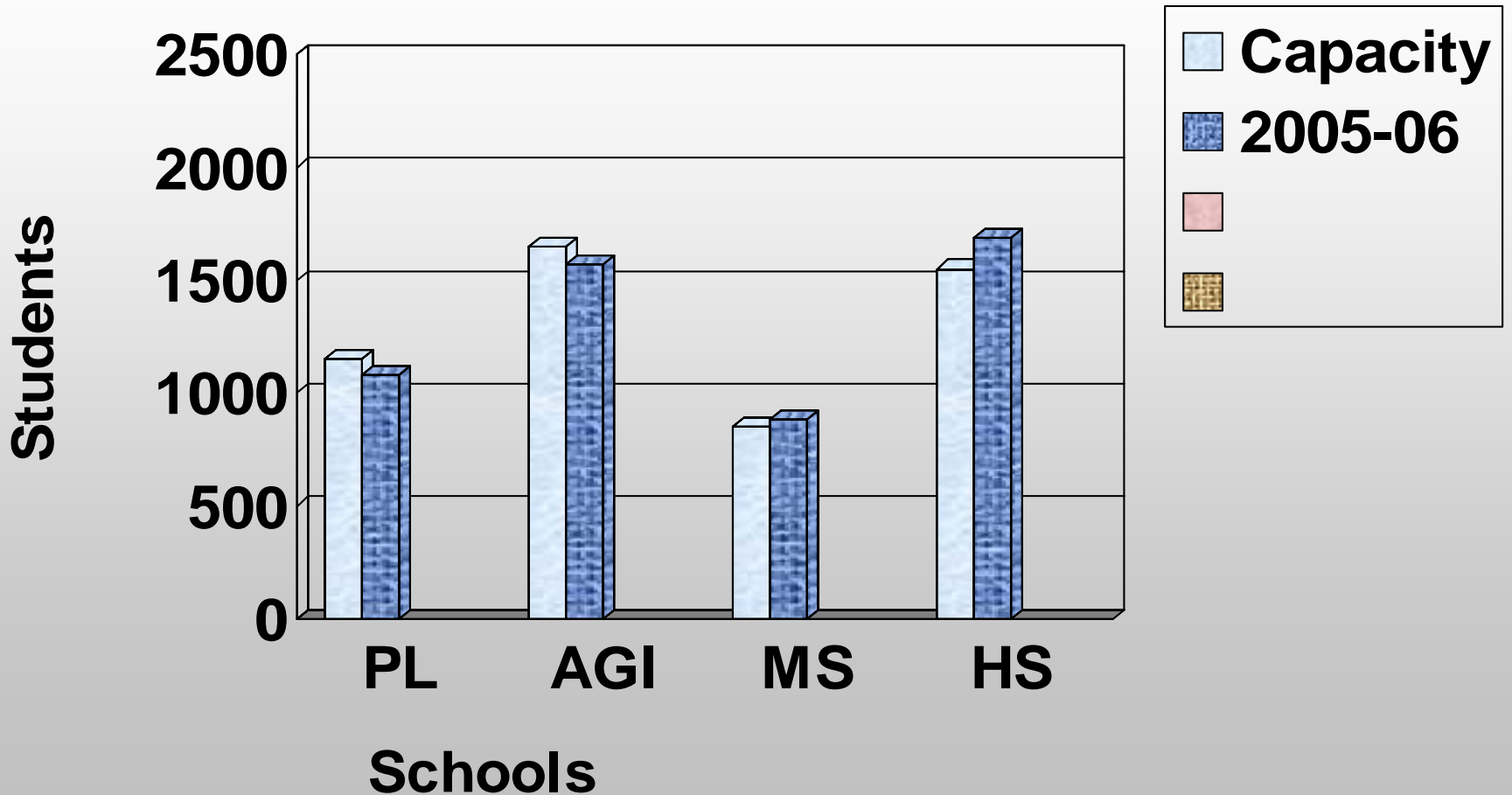
D W K C B

ARCHITECTS

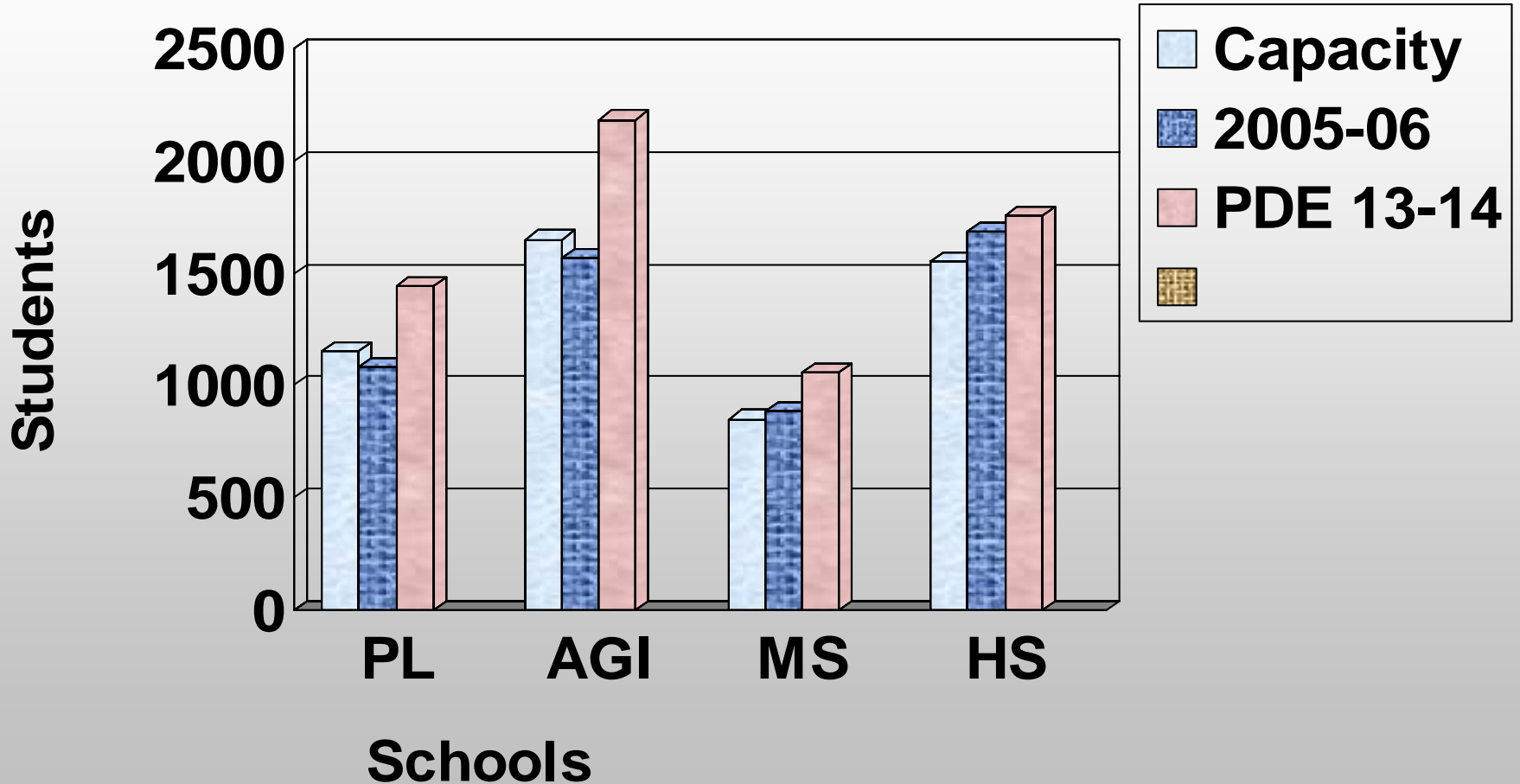
# Capacity / Projected Enrollment



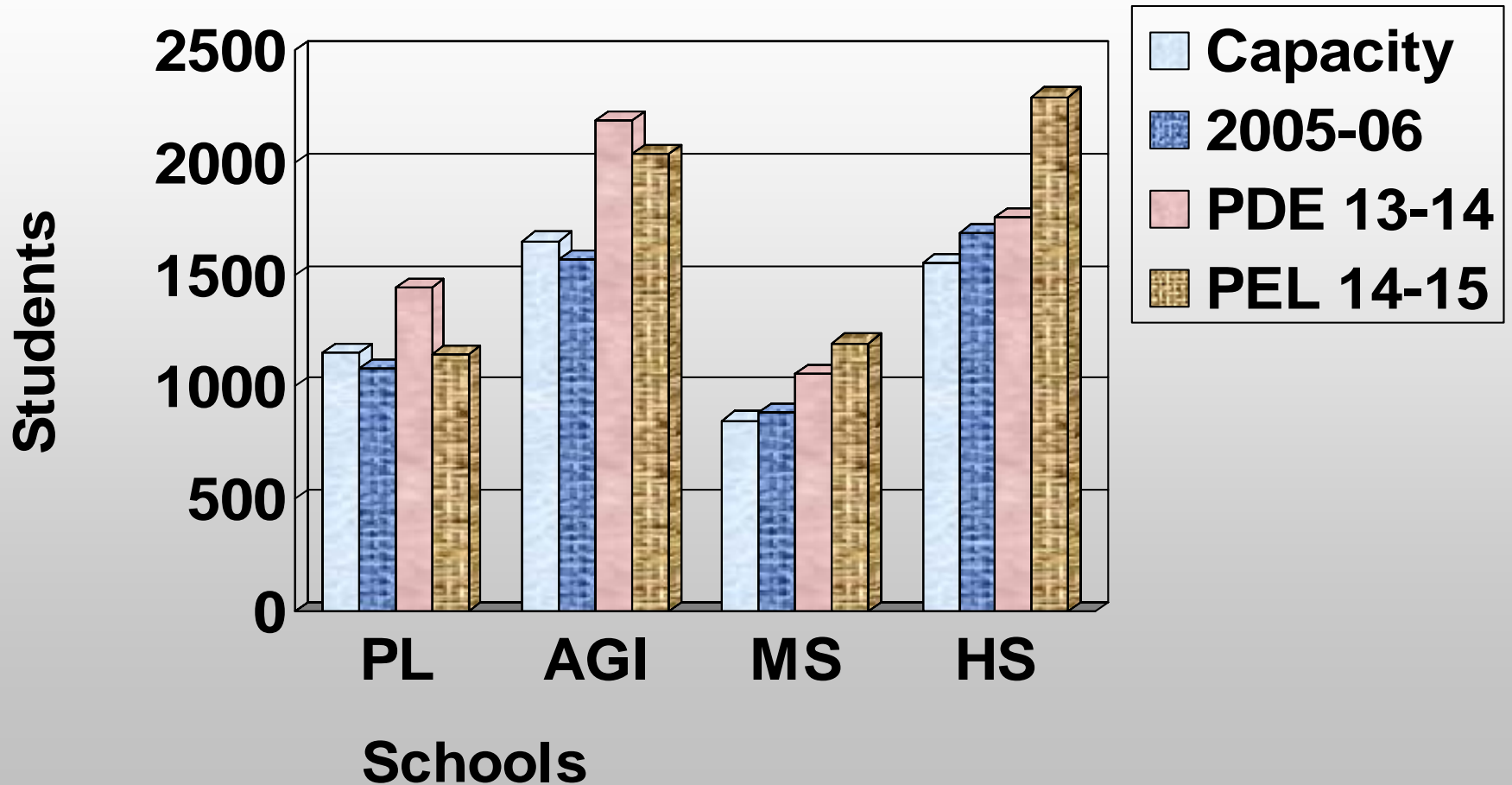
# Capacity / Projected Enrollment



# Capacity / Projected Enrollment



# Capacity / Projected Enrollment



# Avon Grove

## Feasibility Study

# Projected Enrollment by Grade Level

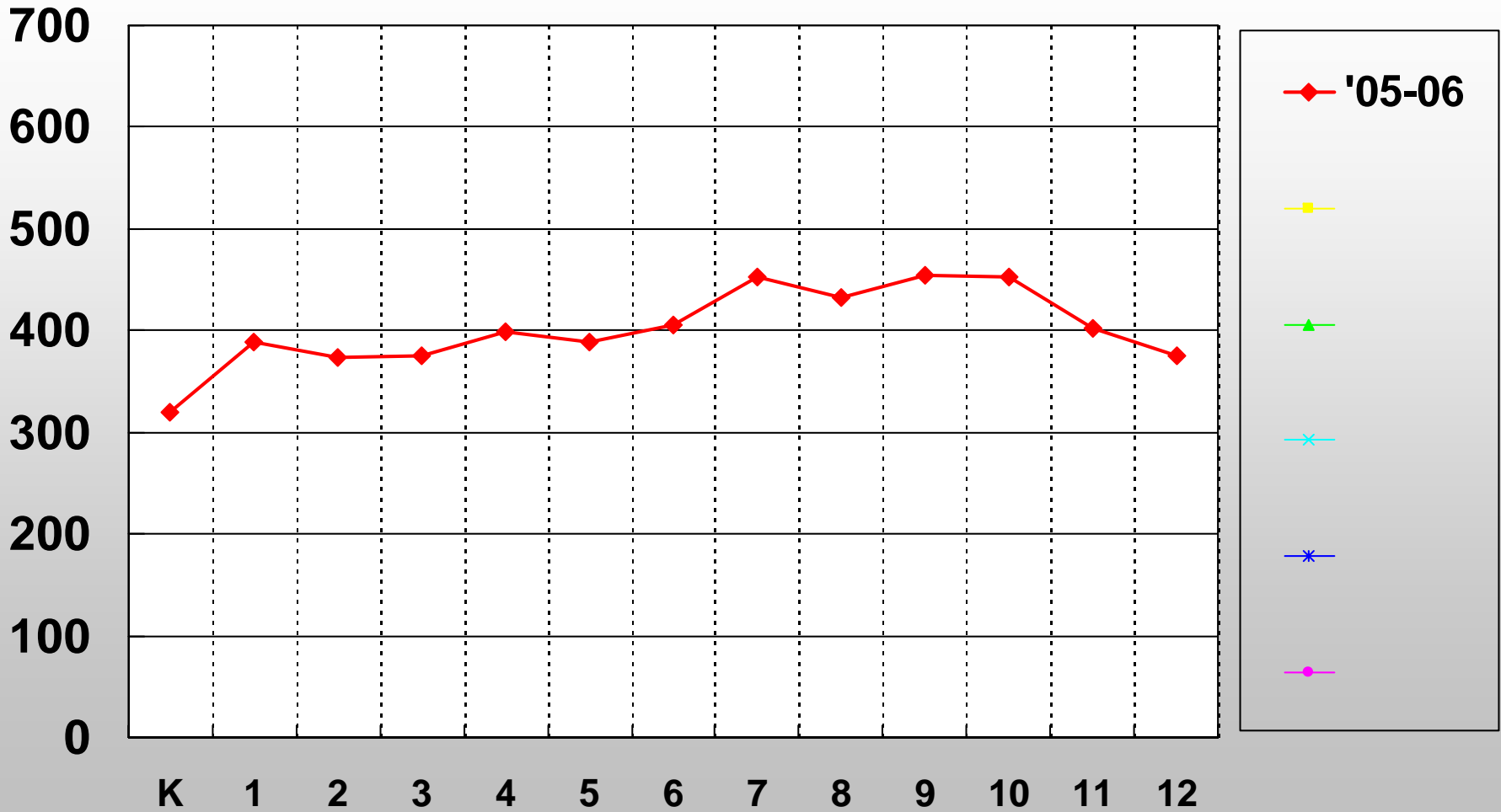
25 August 2005

---

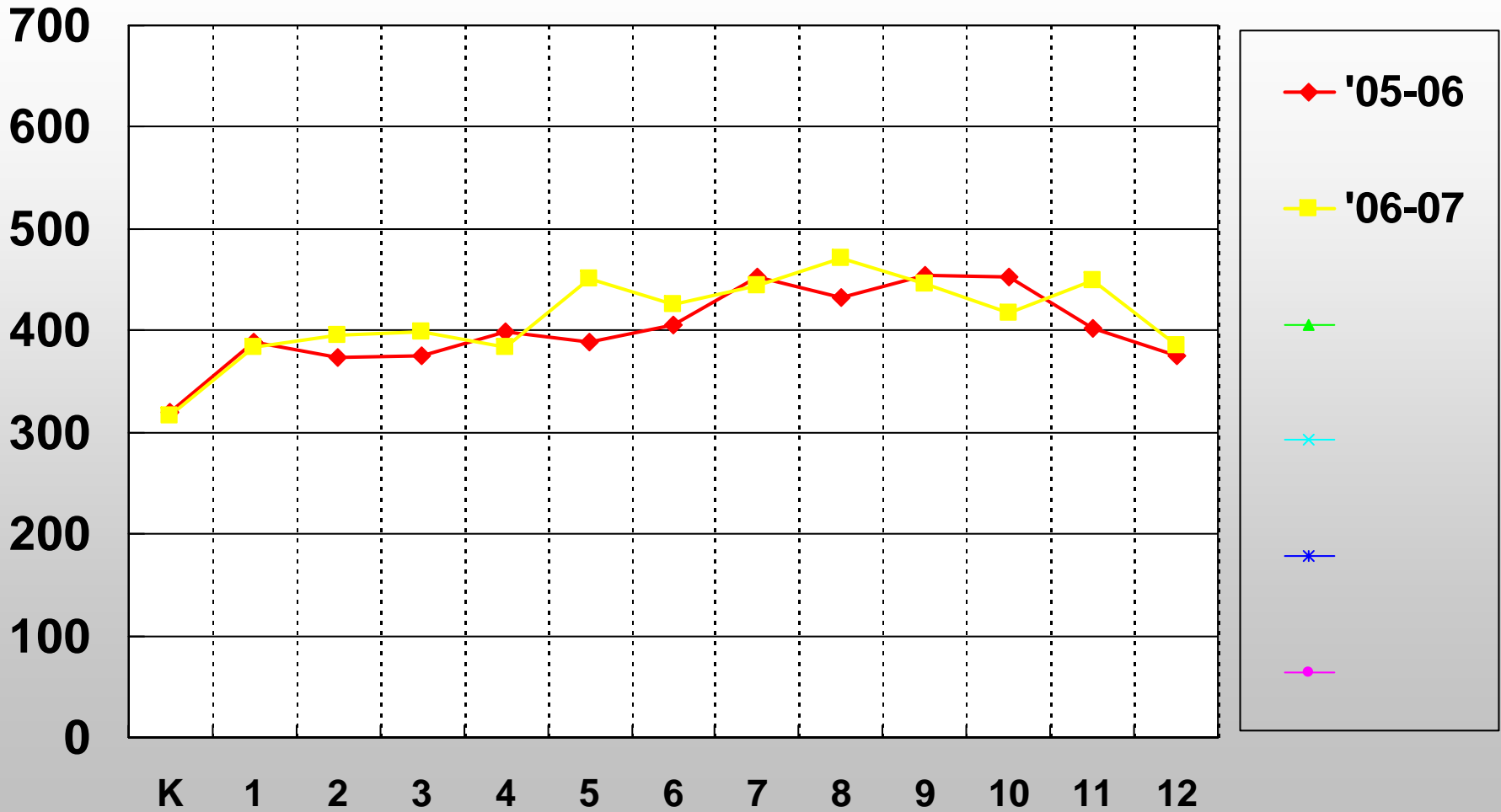
D W K C B

ARCHITECTS

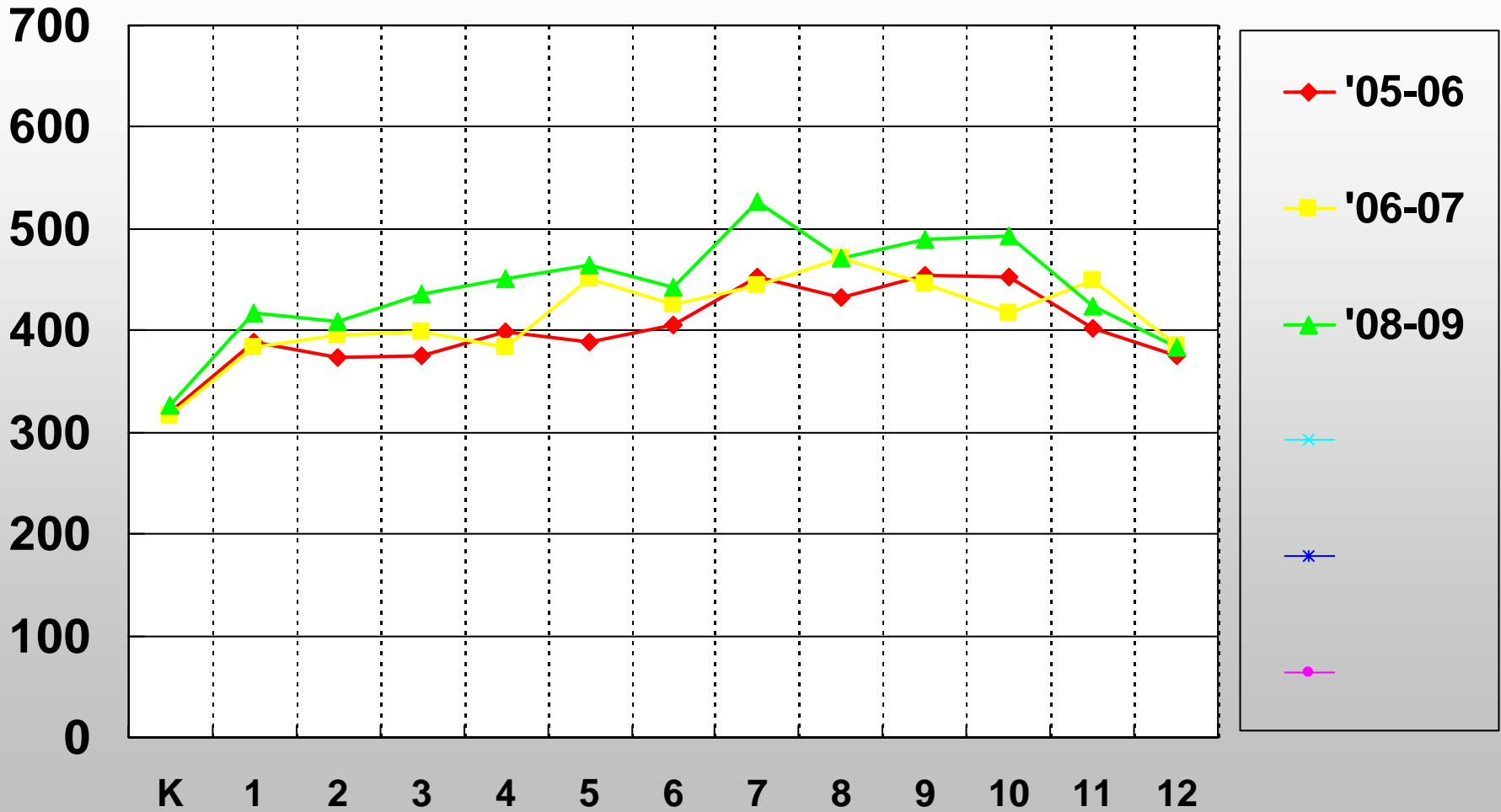
# Enrollment Projections by PA Economy League



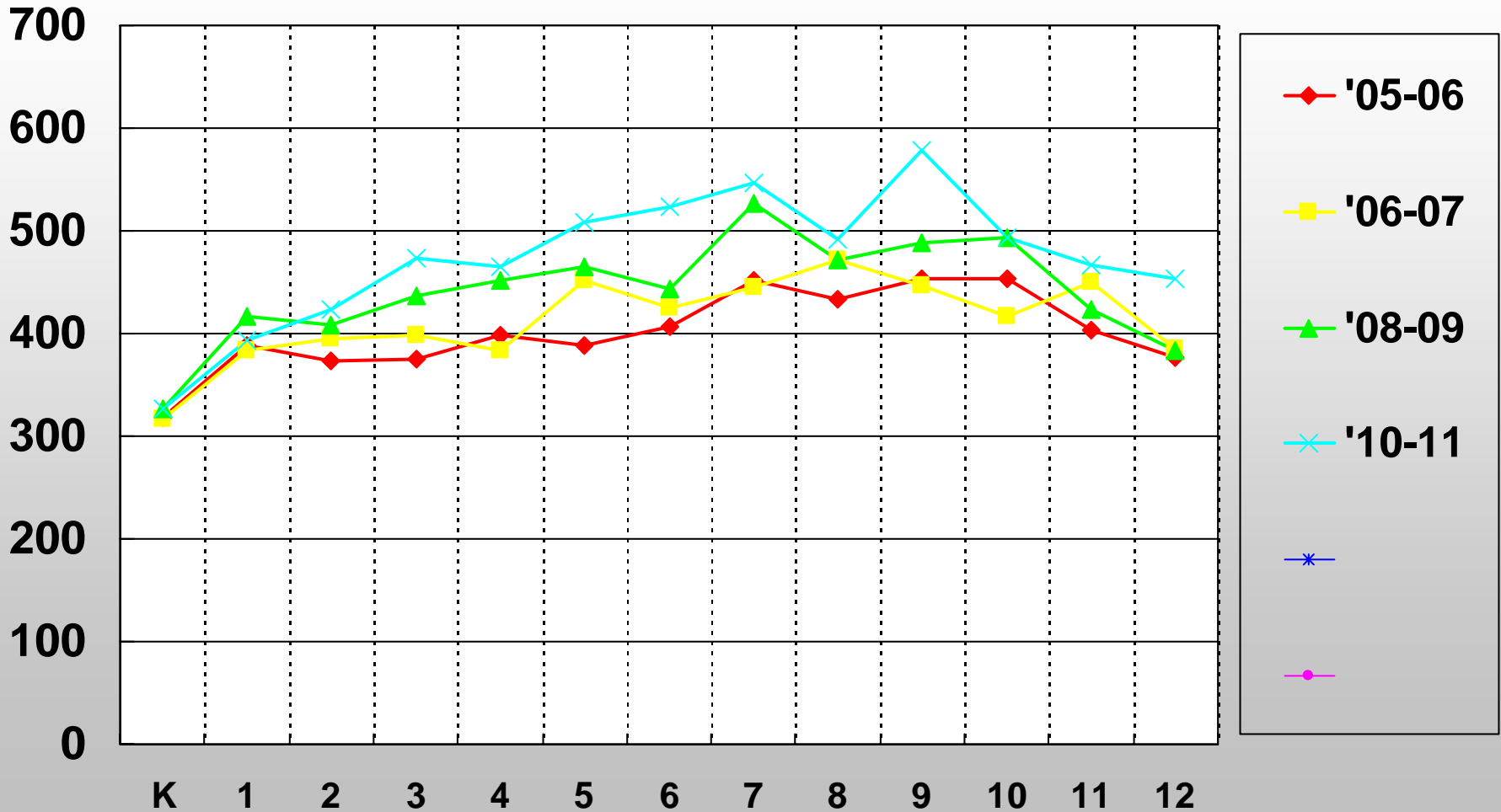
# Enrollment Projections by PA Economy League



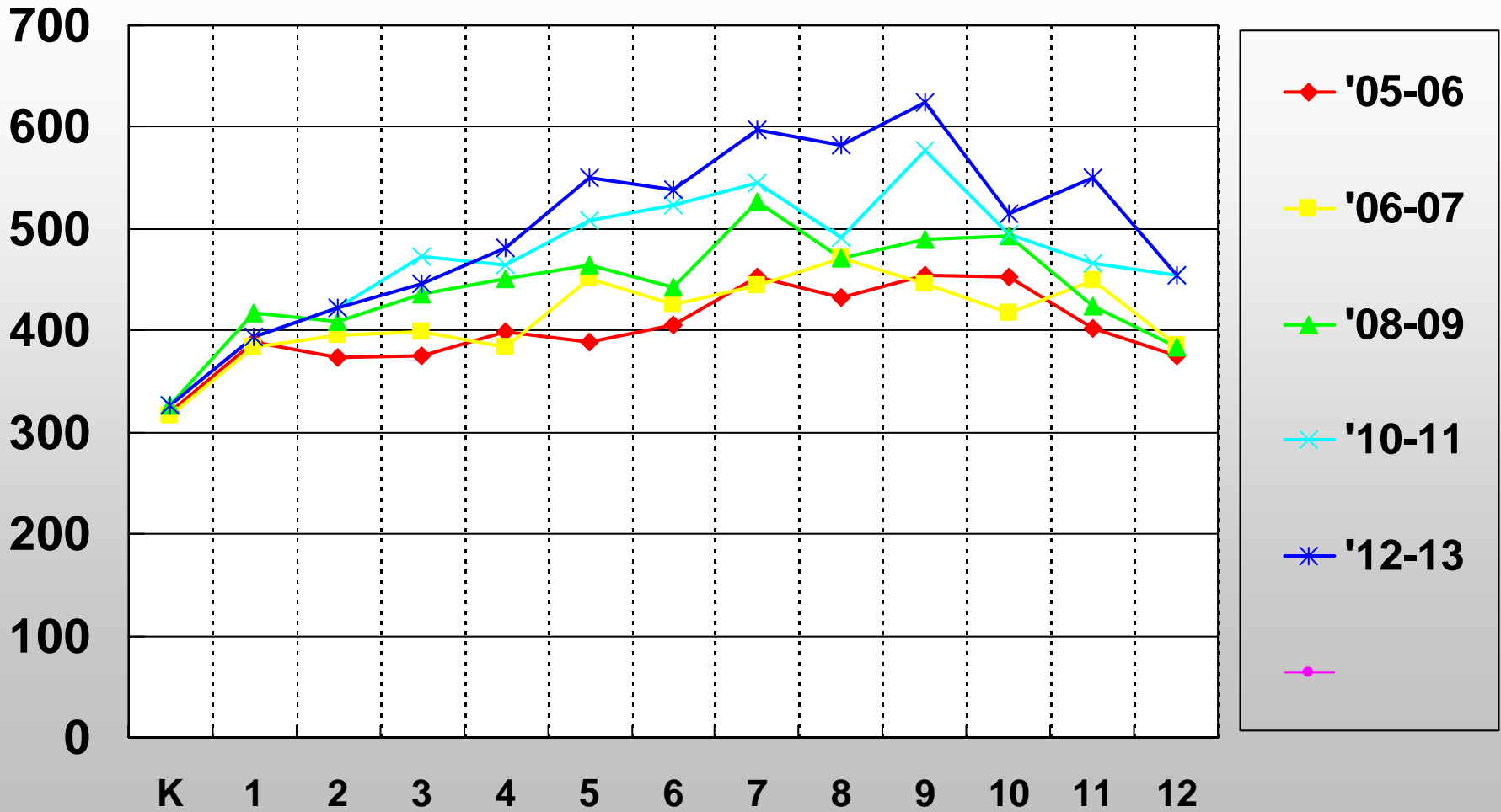
# Enrollment Projections by PA Economy League



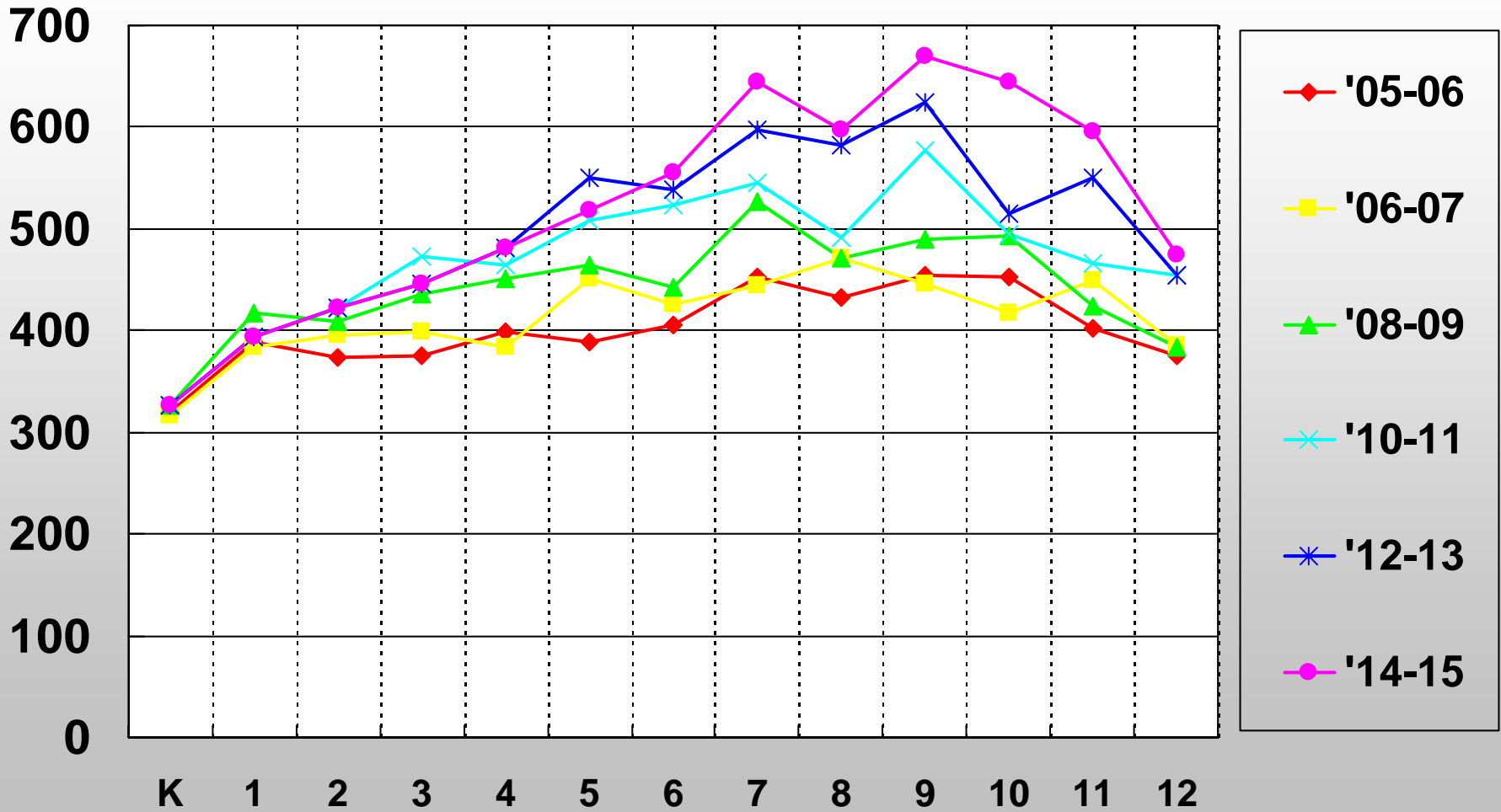
# Enrollment Projections by PA Economy League



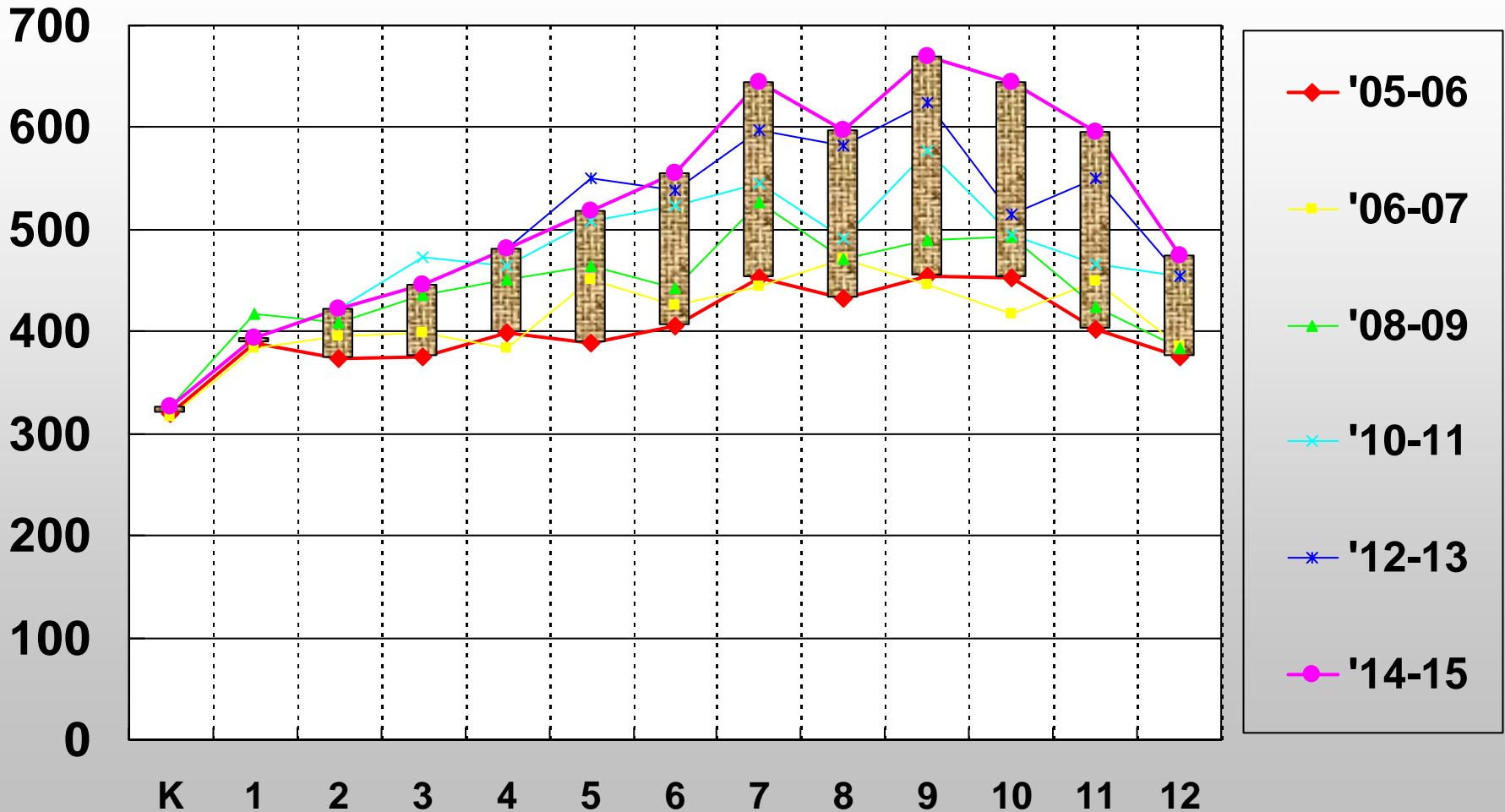
# Enrollment Projections by PA Economy League



# Enrollment Projections by PA Economy League



# Enrollment Projections by PA Economy League



Avon Grove

Feasibility Study

Planning for Growth

How to Grow?

25 August 2005

---

D W K C B

ARCHITECTS

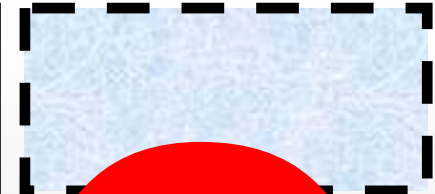
# HOW TO GROW? NO GRADE LEVEL REALIGNMENT



**INCREMENTAL  
GROWTH**



**REPLICATE  
BUILDINGS**

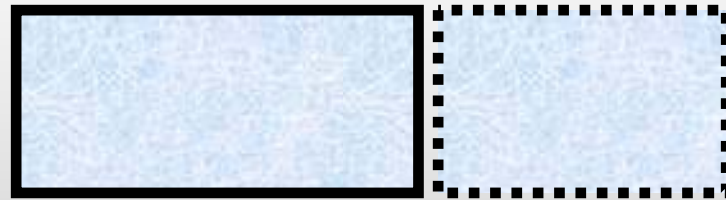


**NOT ENOUGH  
GROWTH ?**

# HOW TO GROW? IMPLY GRADE LEVEL REALIGNMENT

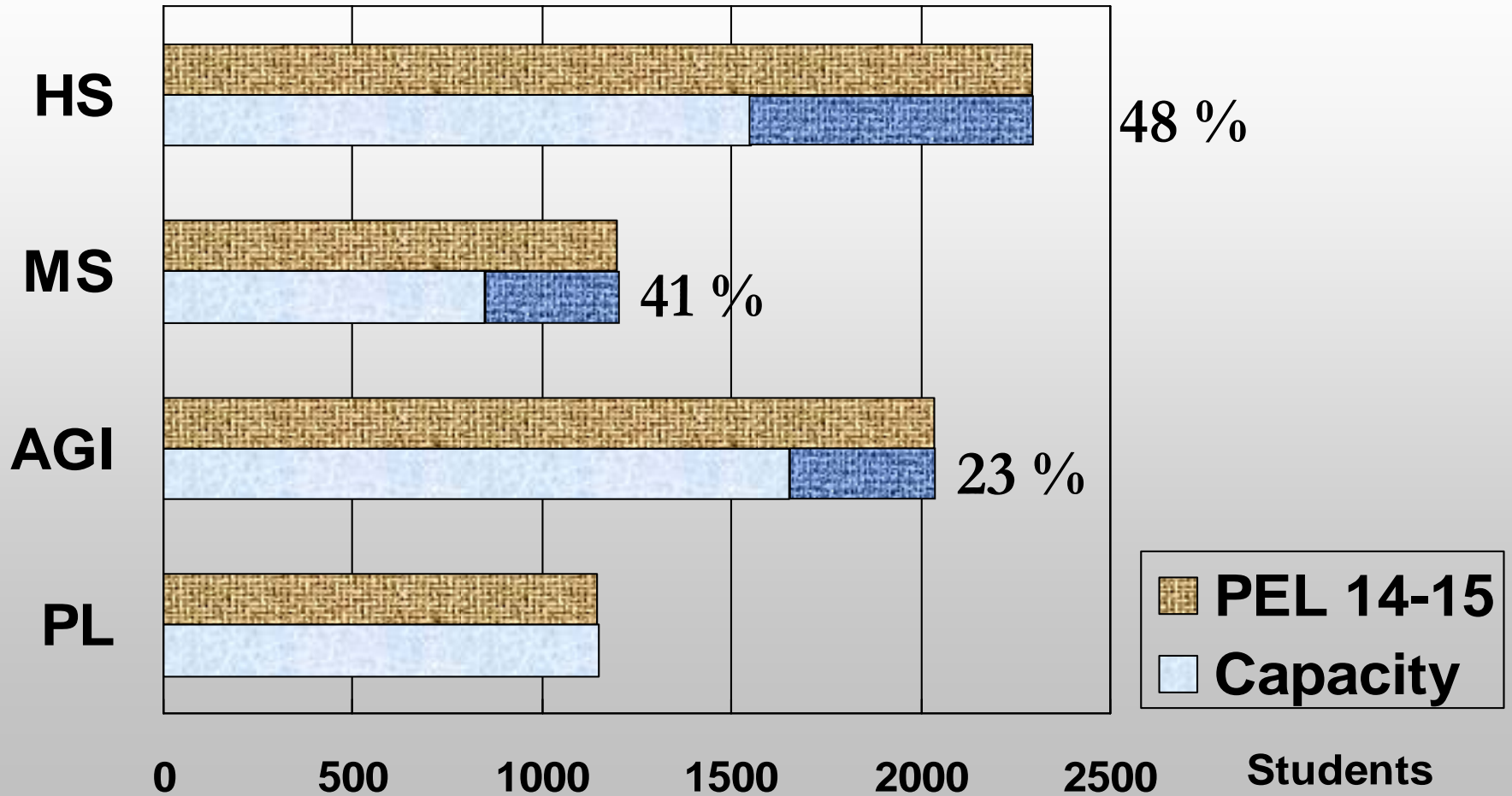


**AGGREGATE THE  
ADDITIONS TO  
MAKE ONE NEW  
BUILDING**



**COMBINATION – ONE NEW  
BLDG., SMALLER ADDITIONS**

# HOW TO GROW?



# Avon Grove

## Feasibility Study

# Planning for Growth

# ISSUES / GOALS

25 August 2005

---

D W K C B

ARCHITECTS

# ISSUES

- ❖ **Costs**
- ❖ **Size of School Populations**
- ❖ **Available Construction Sites – Owned or Purchased**
- ❖ **Age and Condition of Existing Buildings**
- ❖ **Transportation**
- ❖ **Prior Investments in Infrastructure**

# ISSUES

- ❖ **Centralization vs. Decentralization**
- ❖ **Future Needs**
- ❖ **Full Day Kindergarten?**
- ❖ **Appropriate Grade Alignment**
- ❖ **Construction Impacts**
- ❖ **Timing**

# GOALS (Rules and Preferences)

- ❖ Facilities that Respond to Educational Curriculum
- ❖ Flexibility to Allow for Future Needs
- ❖ Effective and Efficient Use of Resources
- ❖ Effective and Efficient Use of Funds
- ❖ Minimize the Number of Student Transitions
- ❖ No K-8 Buildings

# GOALS (Rules and Preferences)

- ❖ **Make Facilities Accessible to Community**
- ❖ **Promote Parent Participation**
- ❖ **Don't Overbuild**

# COST FACTORS

- ❖ **Age and Condition of Existing Buildings**
- ❖ **Program Changes**
- ❖ **Enrollment Growth**

Avon Grove

Feasibility Study

Existing Properties

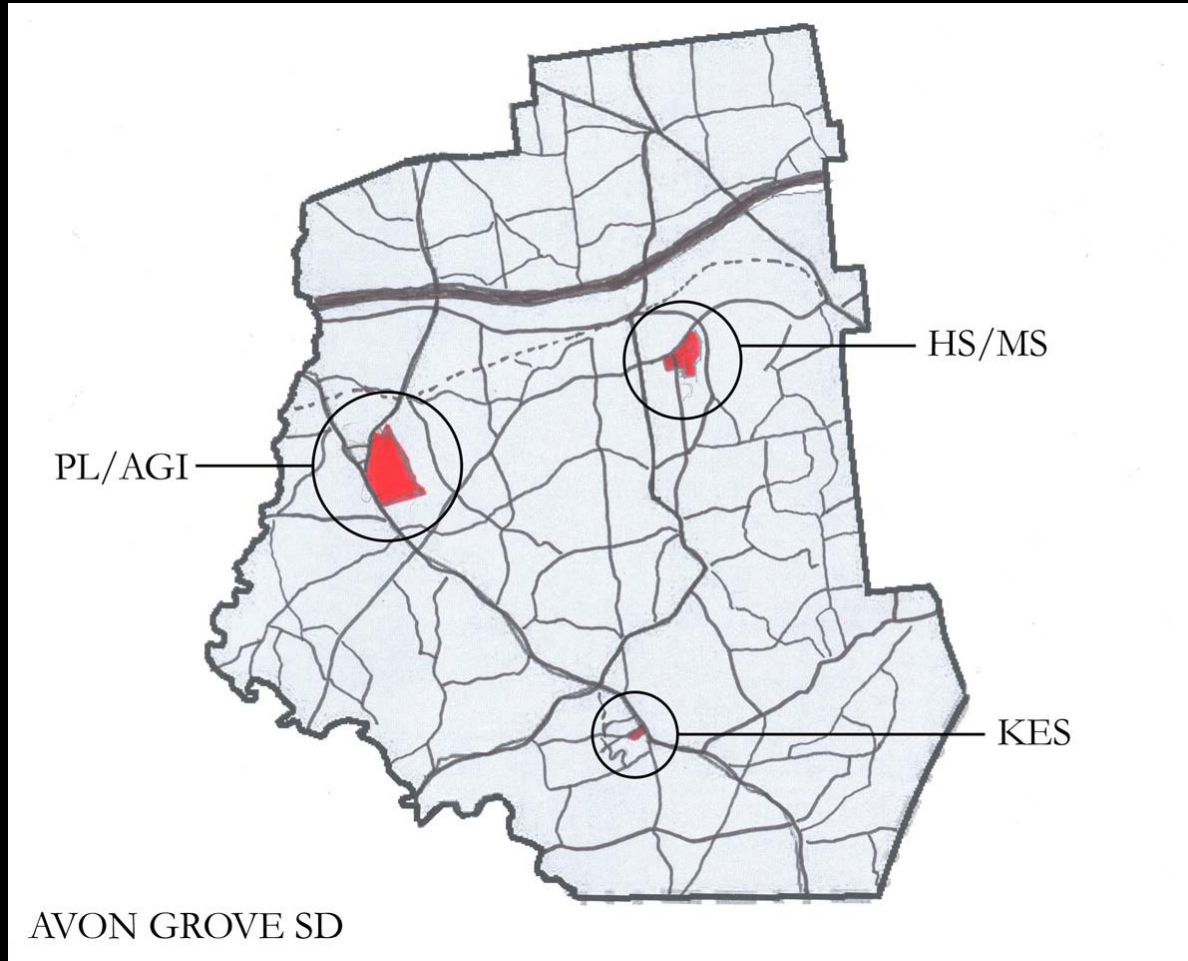
25 August 2005

---

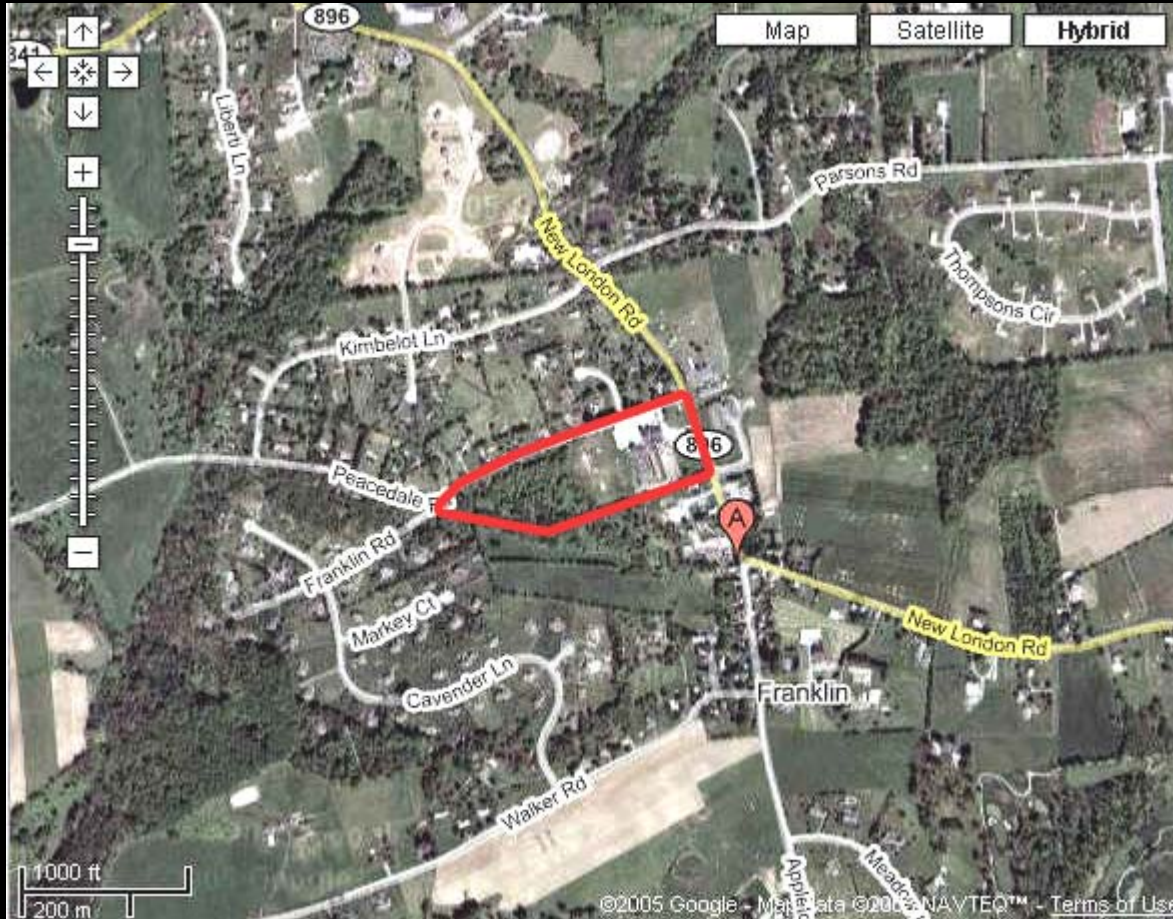
D W K C B

ARCHITECTS

# District Configuration



# Site Plan of Kemblesville Property



D W K C B

ARCHITECTS

# Site Plan of HS/MS Property



# Site Plan of PL/AGI Property



# Avon Grove

## Feasibility Study

# NEXT STEPS

25 August 2005

---

D W K C B

ARCHITECTS

# MOVING FORWARD

- ❖ Agree on the Figures and Needs
- ❖ Confirm the Rules and Preferences
- ❖ Explore the Options that Meet the Above
- ❖ PICK ONE