

# Avon Grove School District

Where *all* students achieve individual  
excellence!

## Student Achievement Report

September 2011



# AGSD Strategic Plan

2008-2013

- **Mid-point Review**

- September 2011



- **Goal Areas**

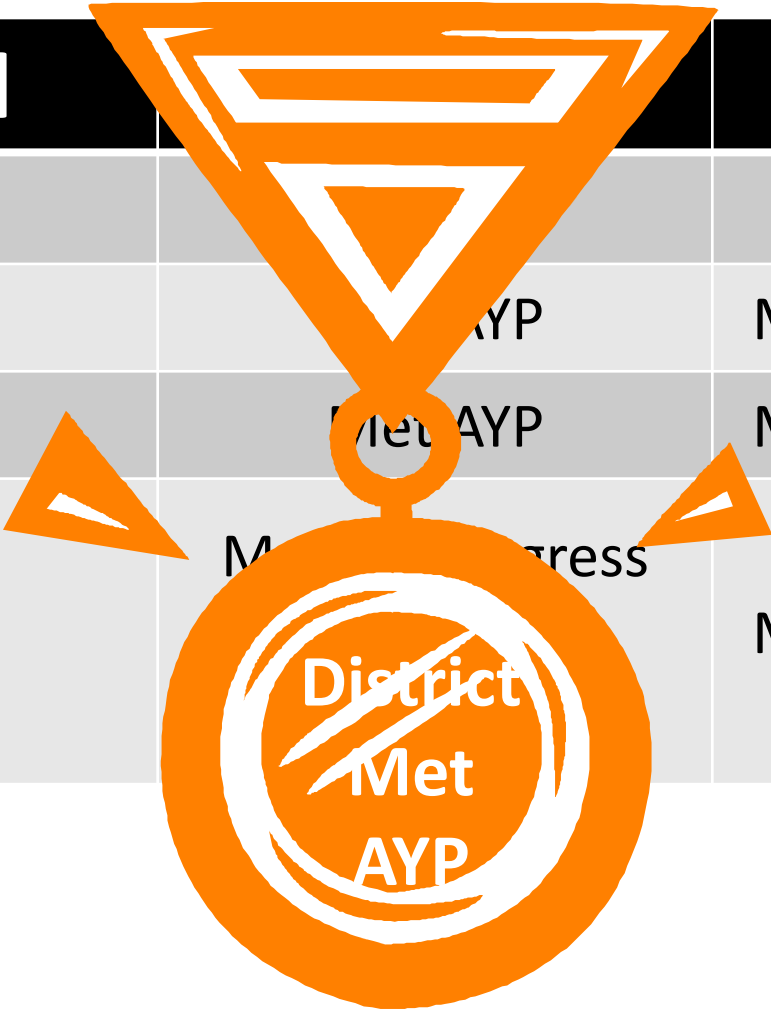
- Academic Achievement
  - Training & Development of ALL Employees
  - Effective Student, Parent, Community & School Collaboration
  - High Quality Support for Schools

# Academic Achievement Goals

Achievement Goal	Metric
Reading & Writing	PSSA
Mathematics	PSSA
Science	PSSA
Algebra II	Enrollment & Promotion Data
Advanced Placement	College Board Exam Report Enrollment Data
SAT	College Board Report
Dual Enrollment	Enrollment Data
Graduation Rate	Enrollment and Graduation Data

# Adequate Yearly Progress 2010-2011

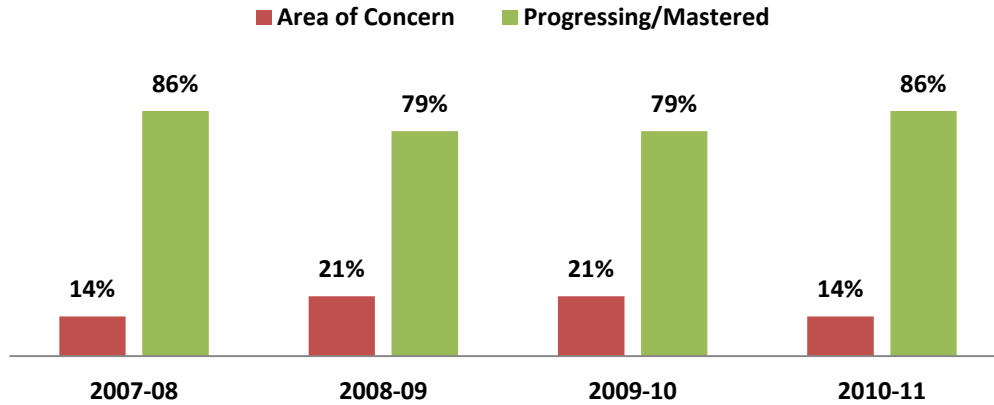
School		Targets
PLE		Met 2/2 Targets
AGI	Met AYP	Met 29/29 Targets
FSEMS	Met AYP	Met 21/21 Targets
AGHS	Met AYP	Met 21/21 Targets



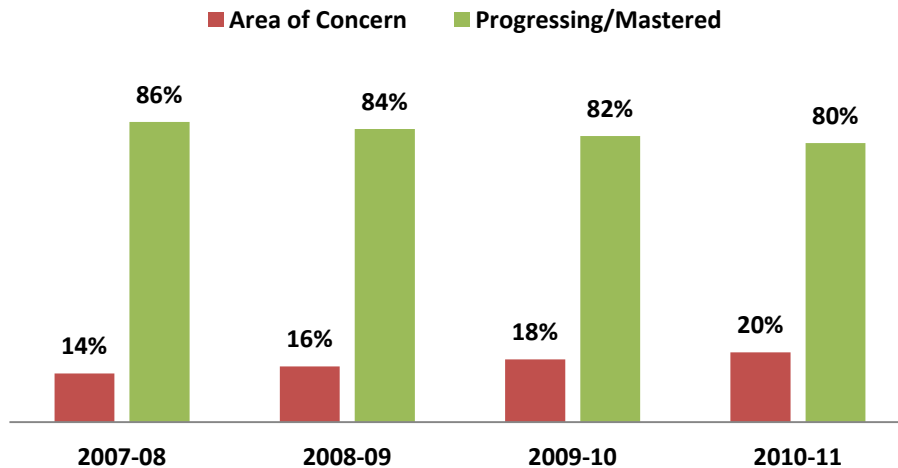
# Penn London Elementary School

## *Reading Stages Data*

### READING - KINDERGARTEN



### READING - GRADE 1



# Penn London Elementary School

## *Reading Stages Data*

### READING - GRADE 2

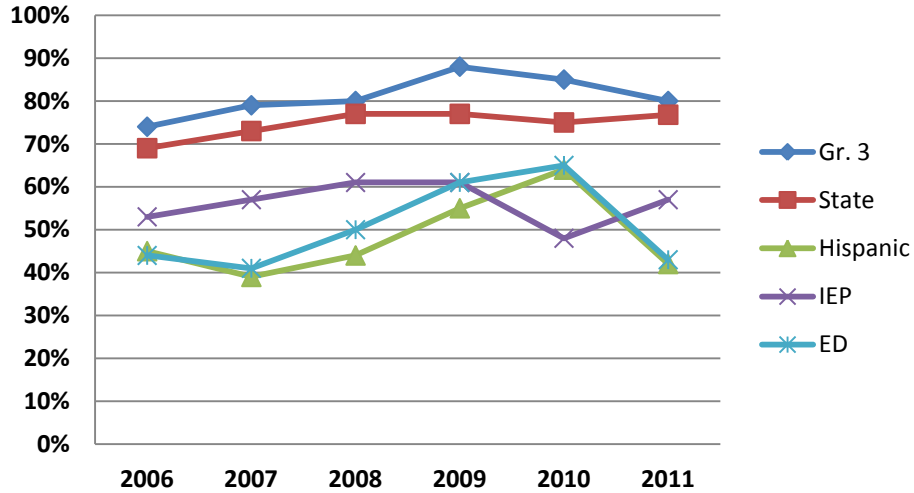
■ Area of Concern    ■ Progressing/Mastered



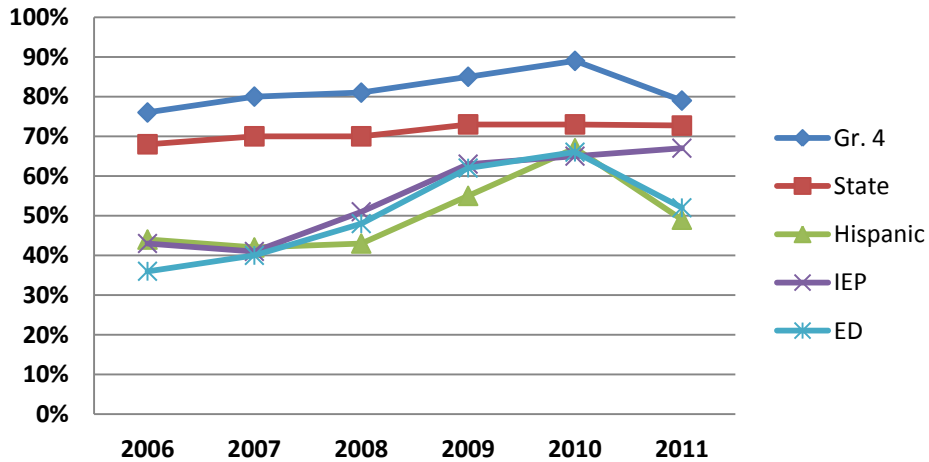
# Avon Grove Intermediate School

## PSSA

### READING - GRADE 3



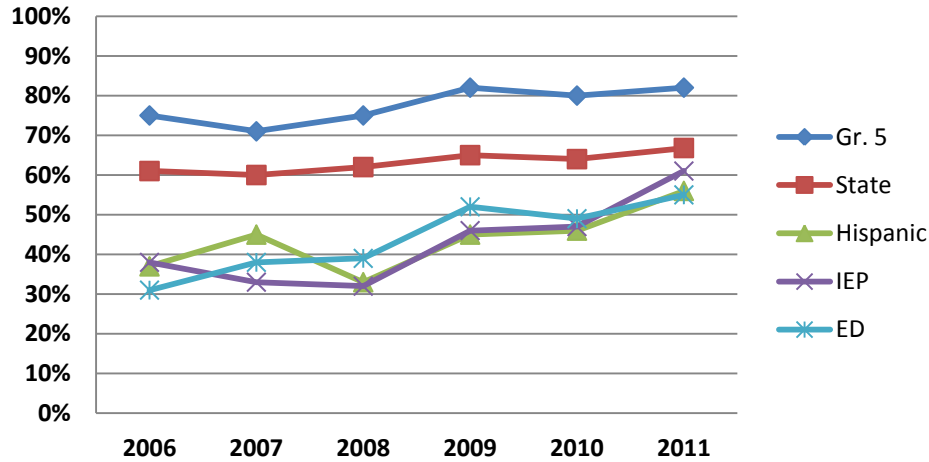
### READING - GRADE 4



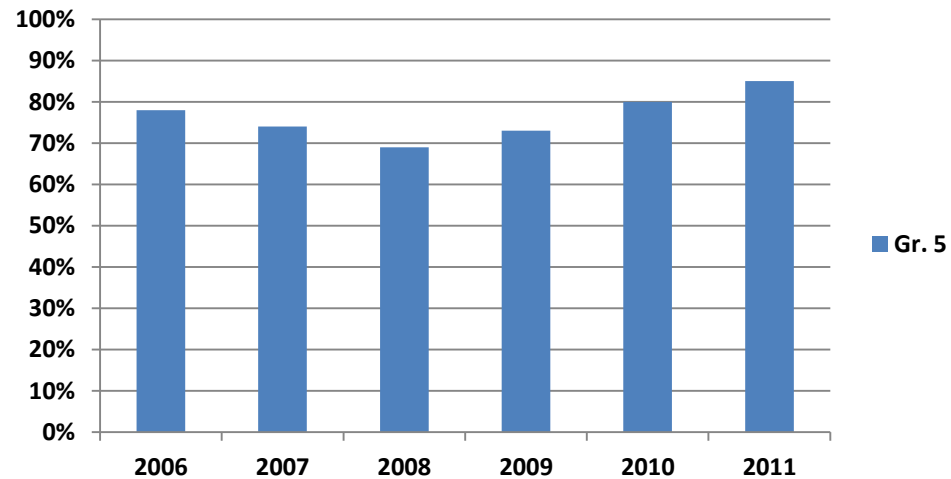
# Avon Grove Intermediate School

## PSSA

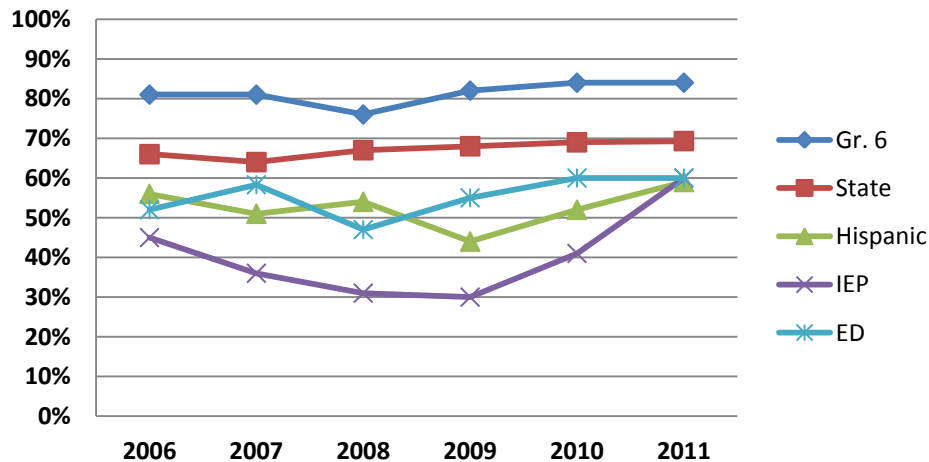
### READING - GRADE 5



### WRITING - GRADE 5



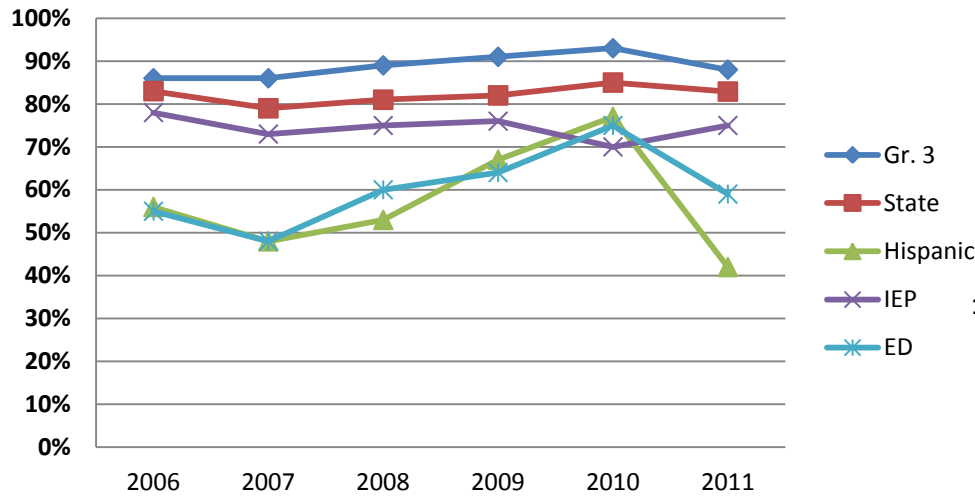
### READING - GRADE 6



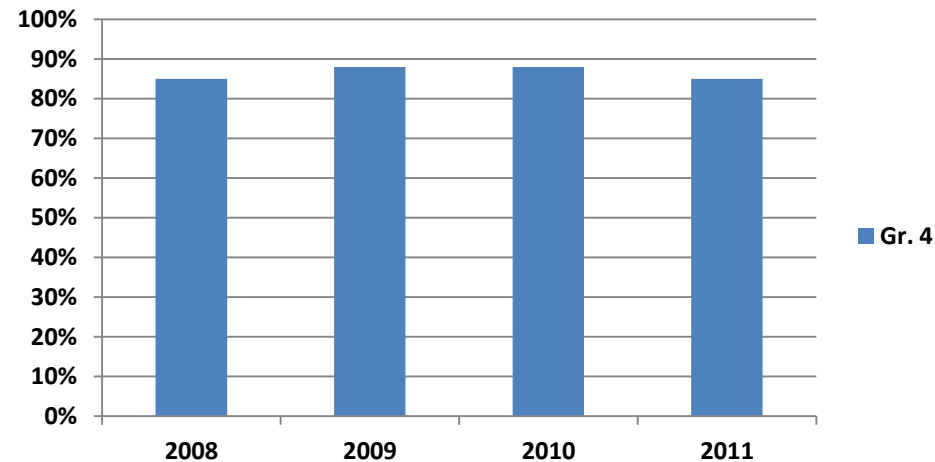
# Avon Grove Intermediate School

## PSSA

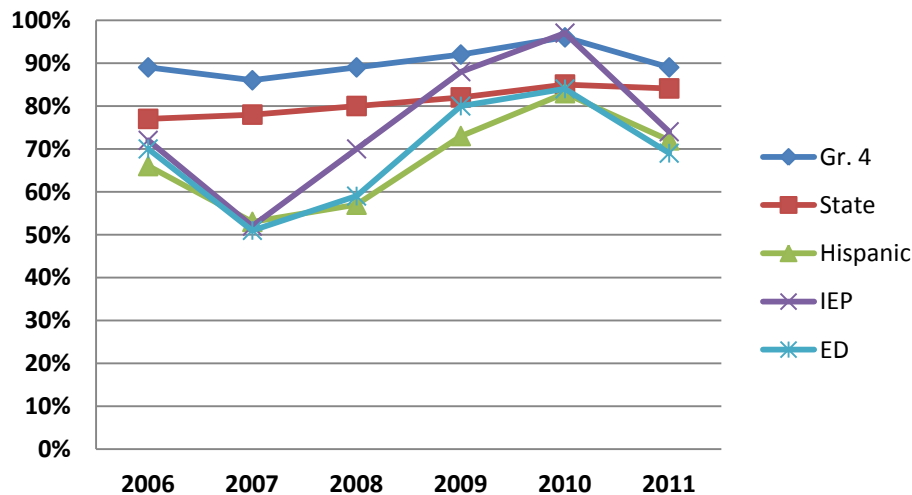
### MATHEMATICS - GRADE 3



### SCIENCE - GRADE 4



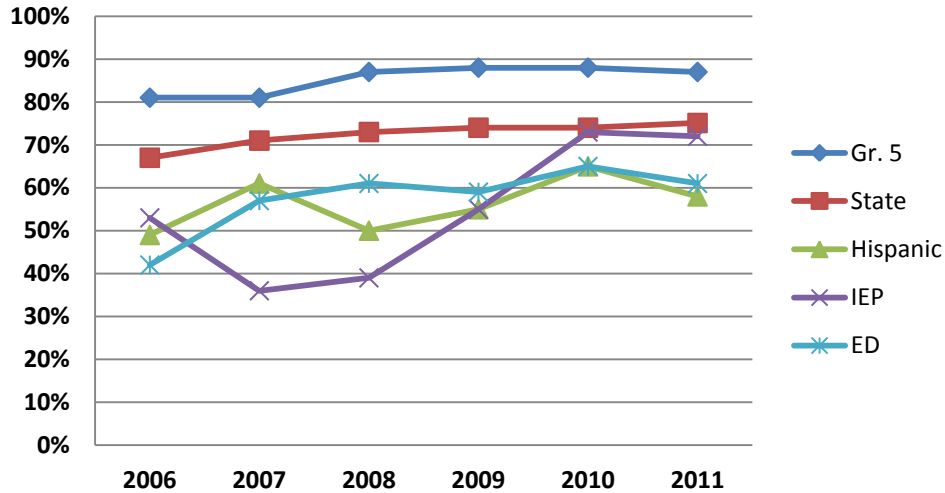
### MATHEMATICS - GRADE 4



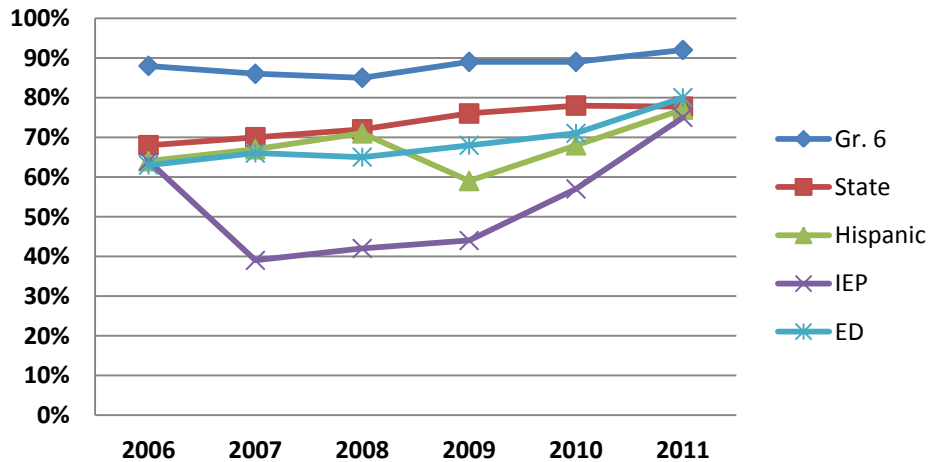
# Avon Grove Intermediate School

## PSSA

### MATHEMATICS - GRADE 5



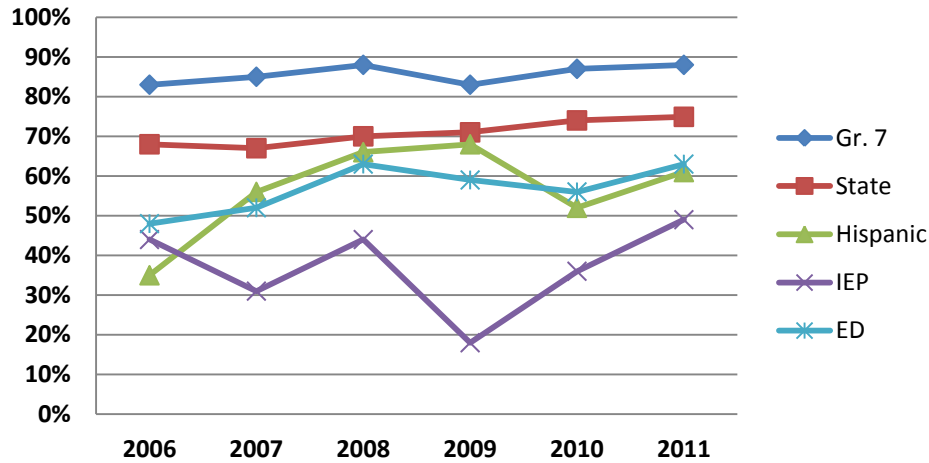
### MATHEMATICS - GRADE 6



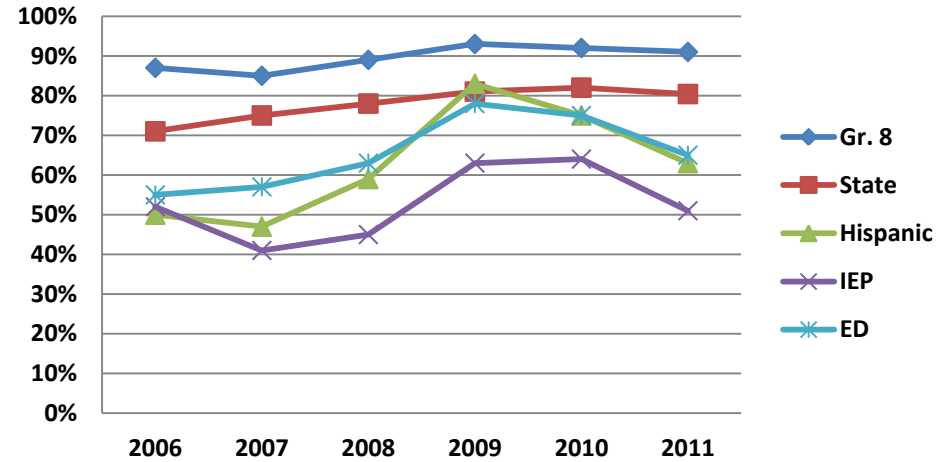
# Fred S. Engle Middle School

## PSSA

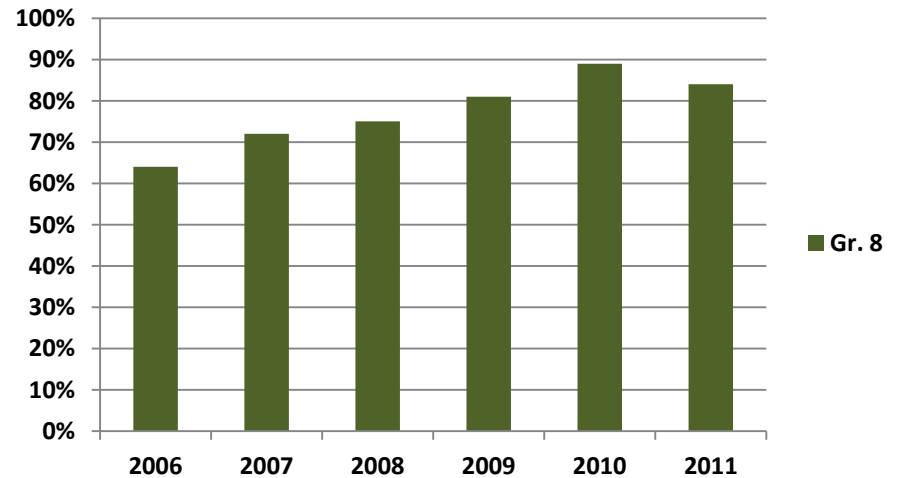
### READING - GRADE 7



### READING - GRADE 8



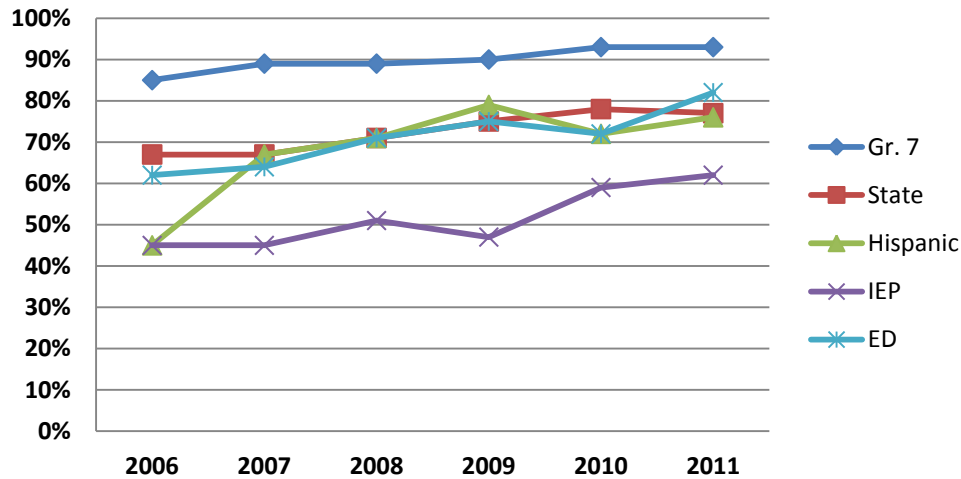
### WRITING - GRADE 8



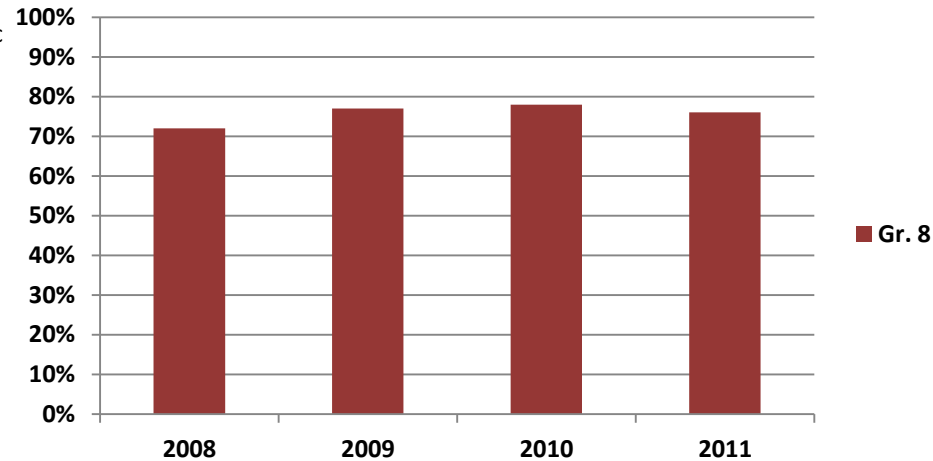
# Fred S. Engle Middle School

## PSSA

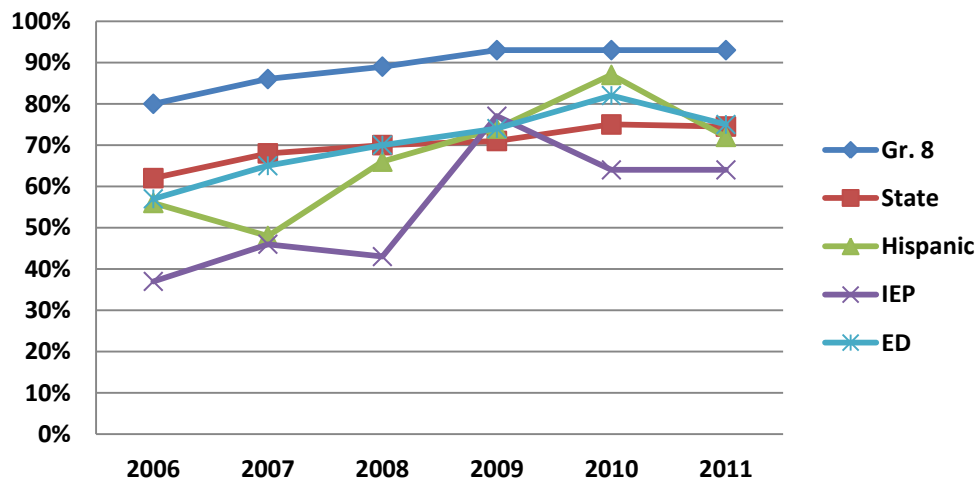
### MATHEMATICS - GRADE 7



### SCIENCE - GRADE 8



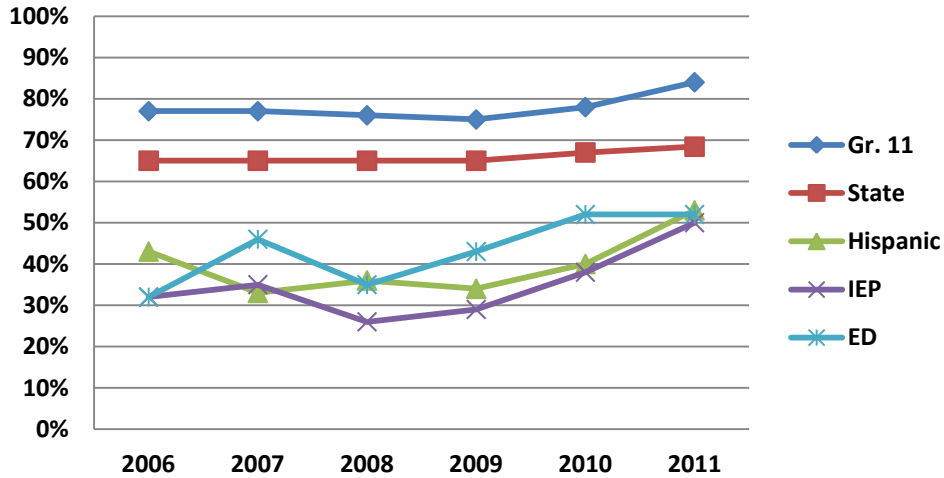
### MATHEMATICS - GRADE 8



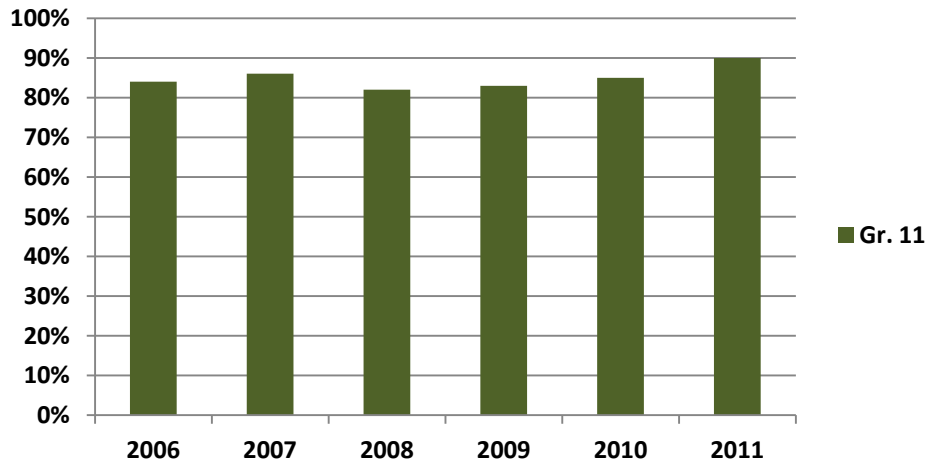
# AVON GROVE HIGH SCHOOL

## PSSA

### READING - Grade 11



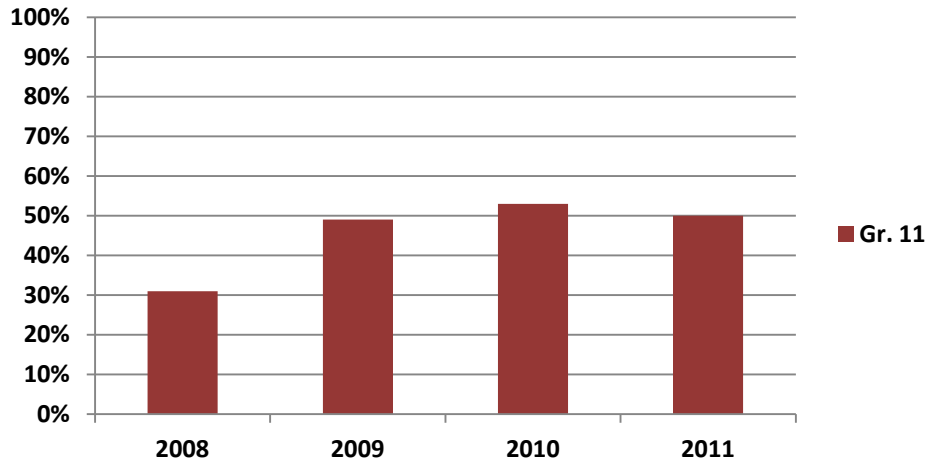
### WRITING - GRADE 11



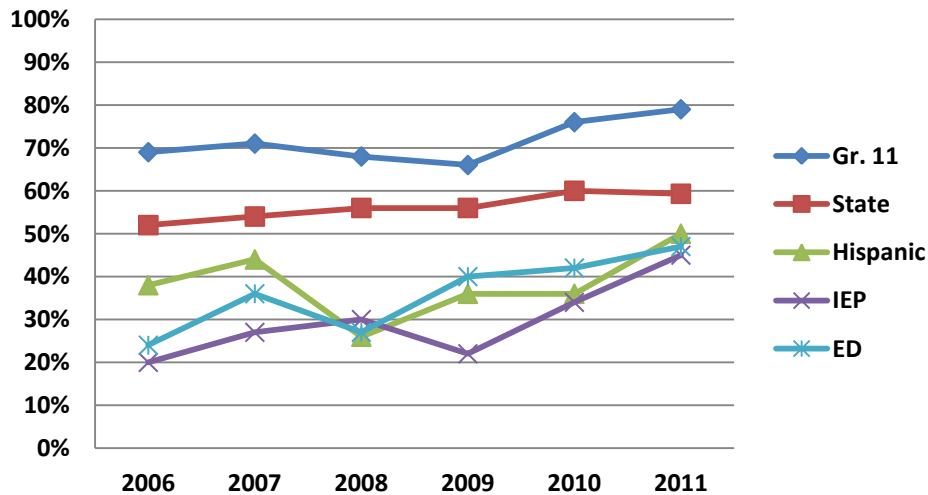
# AVON GROVE HIGH SCHOOL

## PSSA

### SCIENCE - GRADE 11

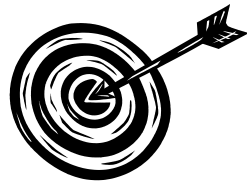


### MATHEMATICS - Grade 11

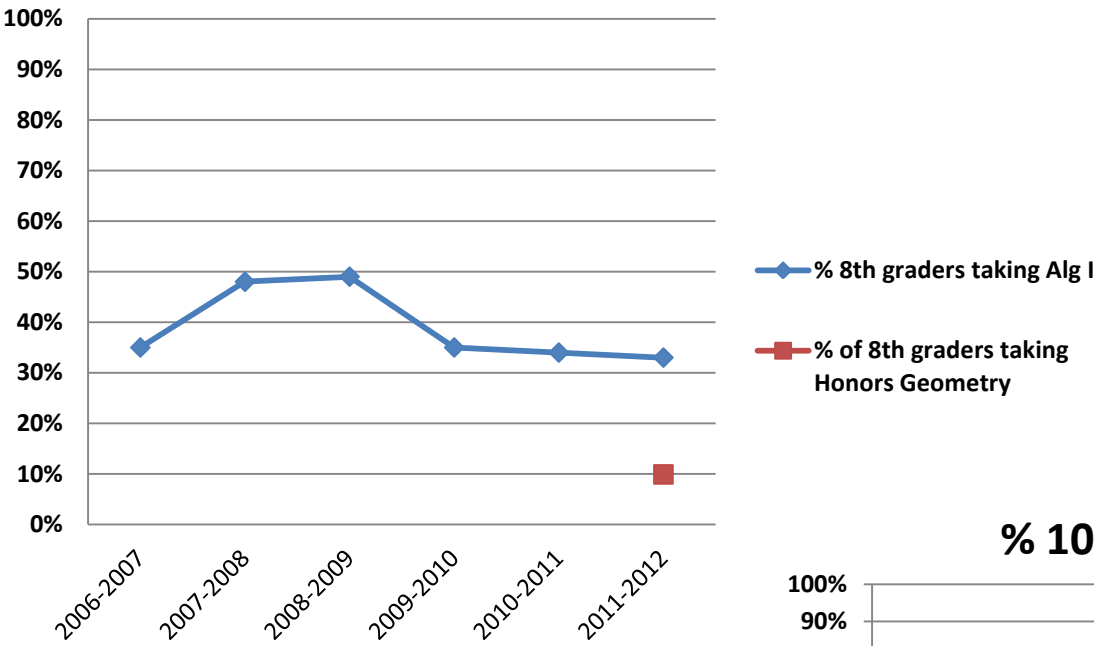


# Algebra

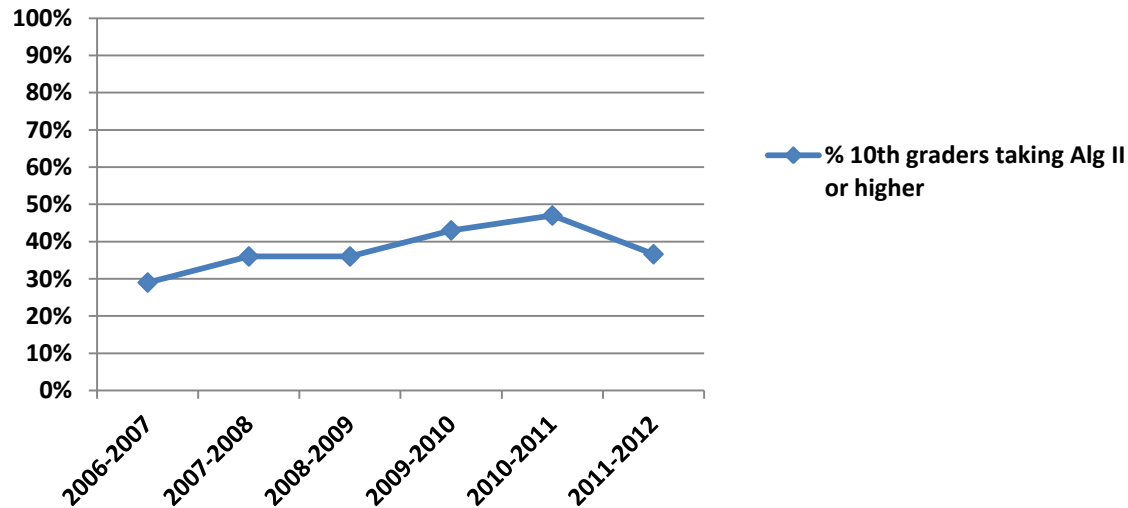
Increase the number of students successfully completing Algebra II by the end of grade 10.  
Completion Rate (2013) = 50%



## % of 8th Graders in Higher Level Math Courses

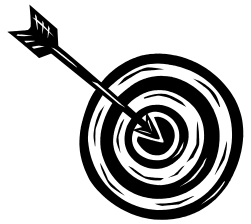
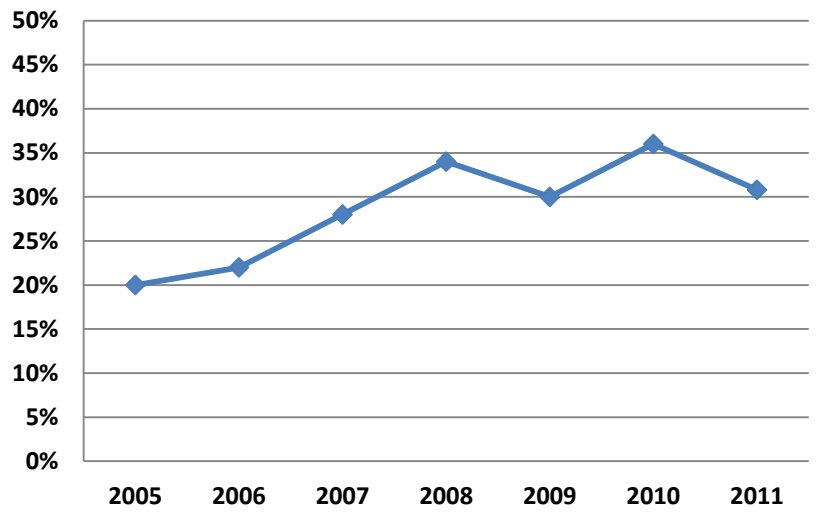


## % 10th Graders in Alg II or Higher



# Advanced Placement Program

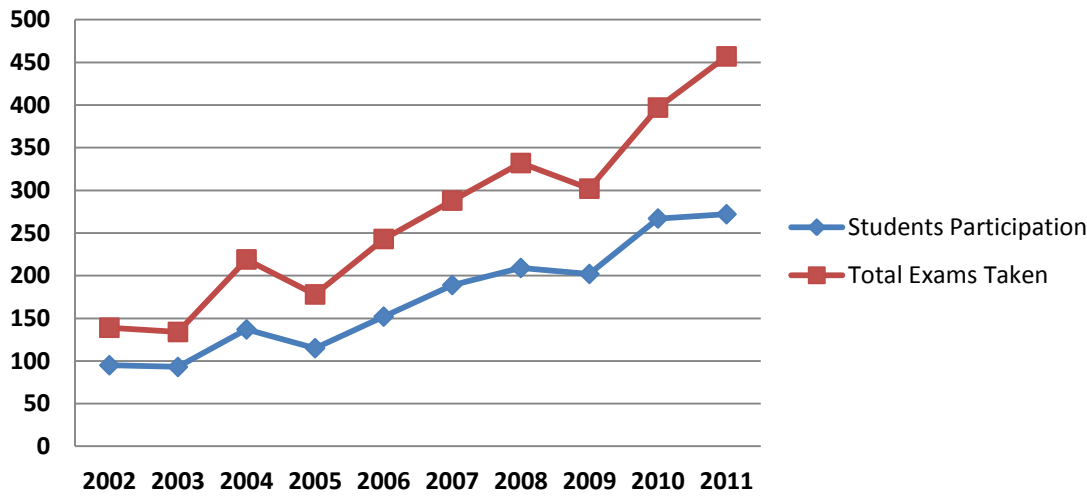
### % of Juniors & Seniors in at Least One AP Class



**Increase the number of students participating in and successfully completing AP Courses (earning a score of 3 or better)**

◆ % students enrolled

### Participation & Exams

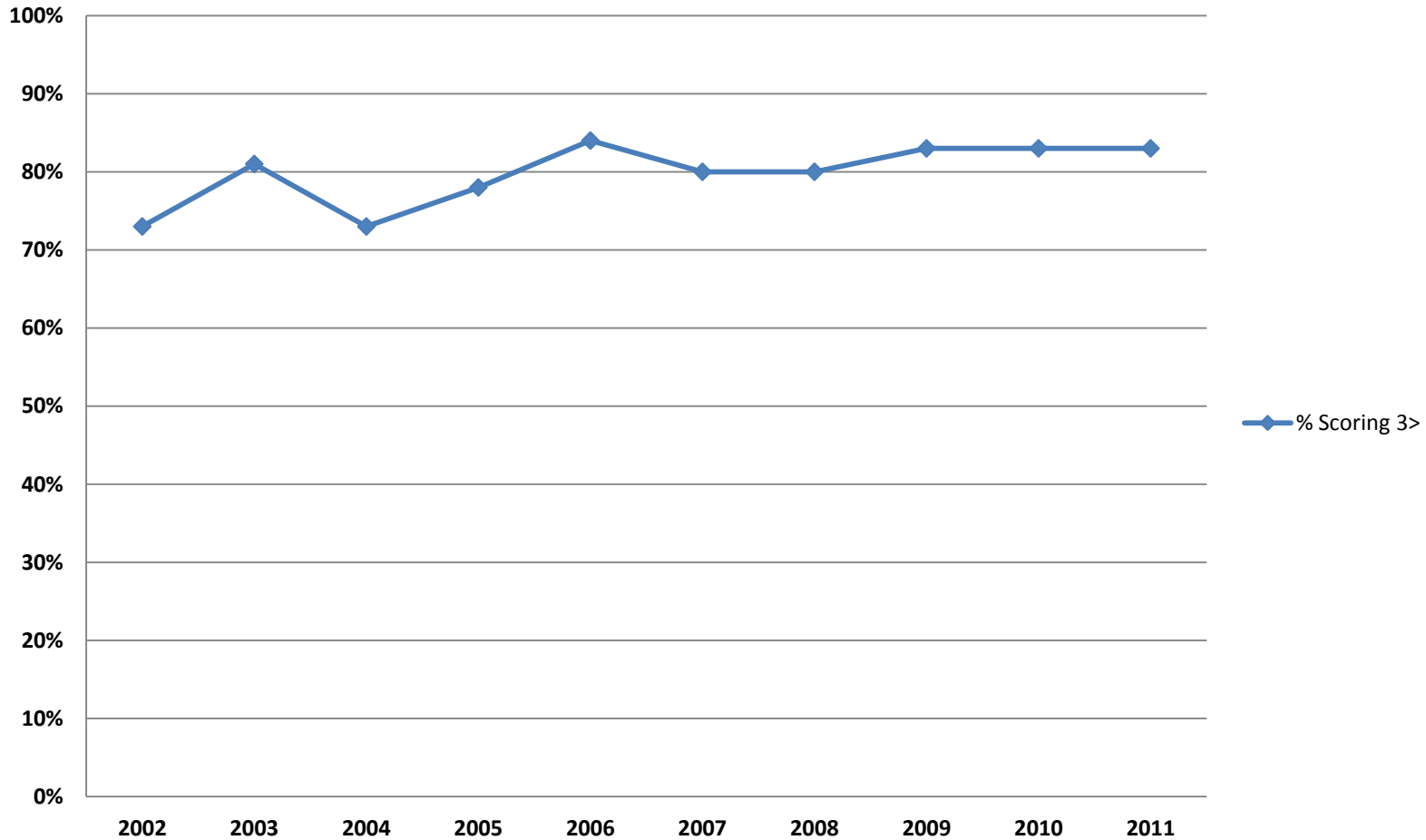


# Advanced Placement Program

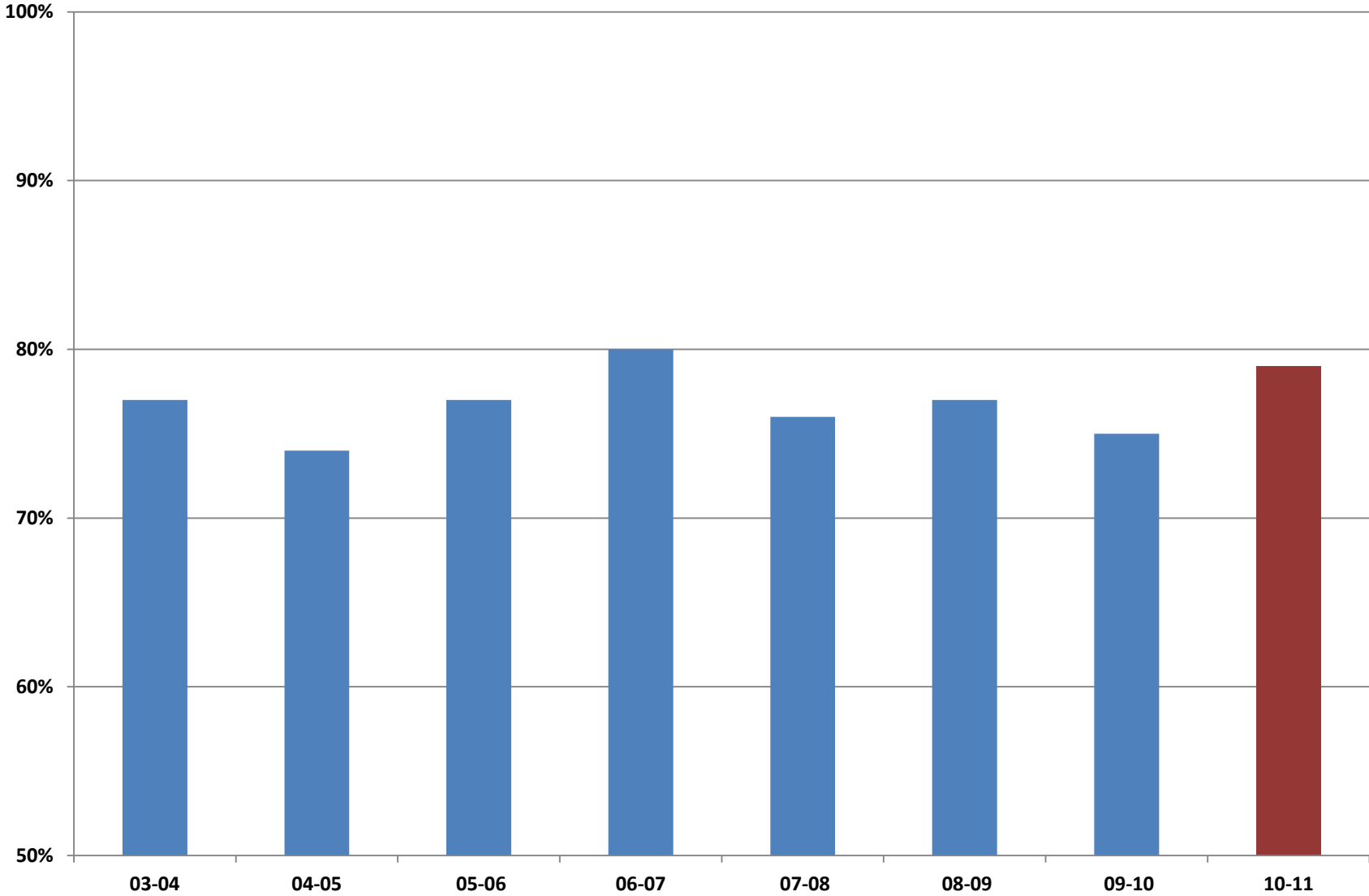


Increase the number of students participating in and successfully completing AP Courses (earning a score of 3 or better)

**% Scoring 3>**

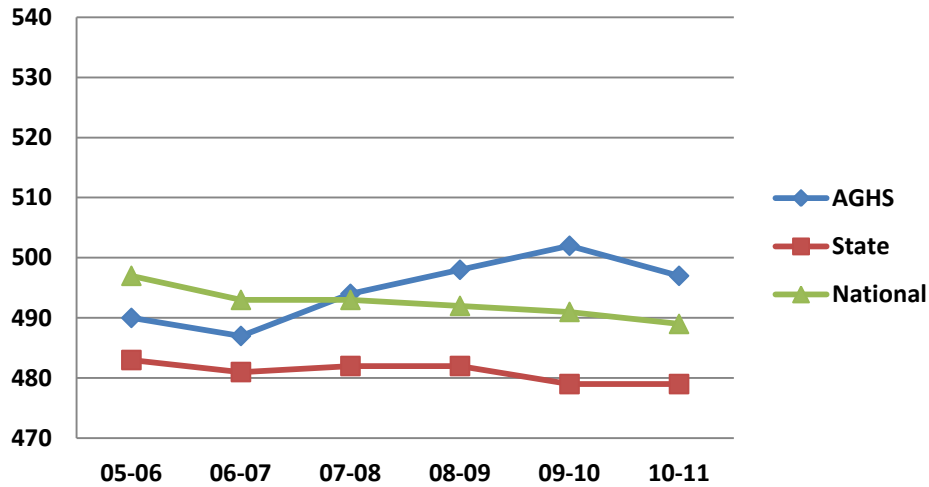


# Percentage of Seniors Taking the SAT

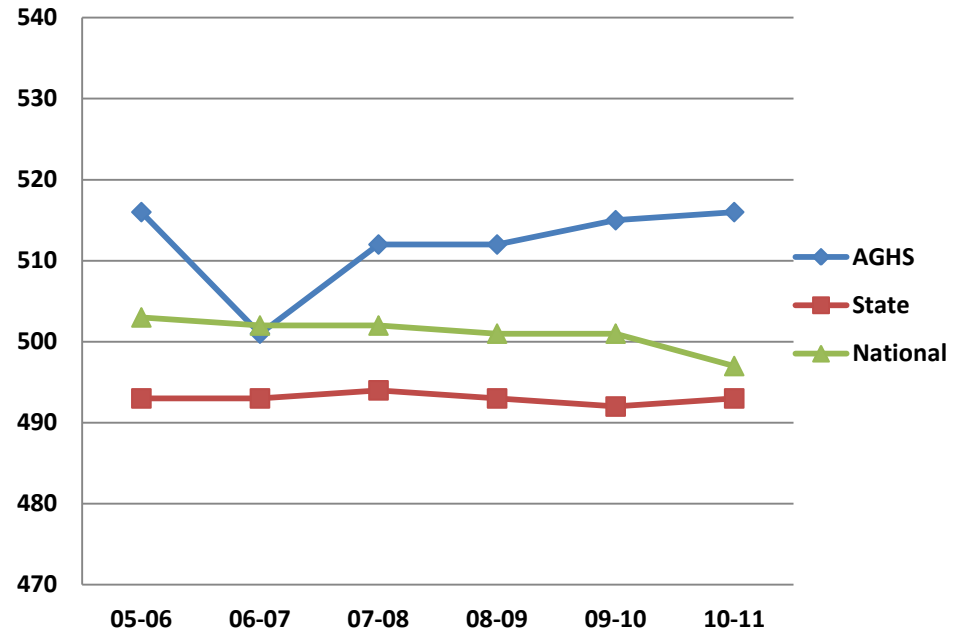


# SAT Scores

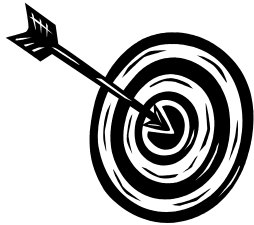
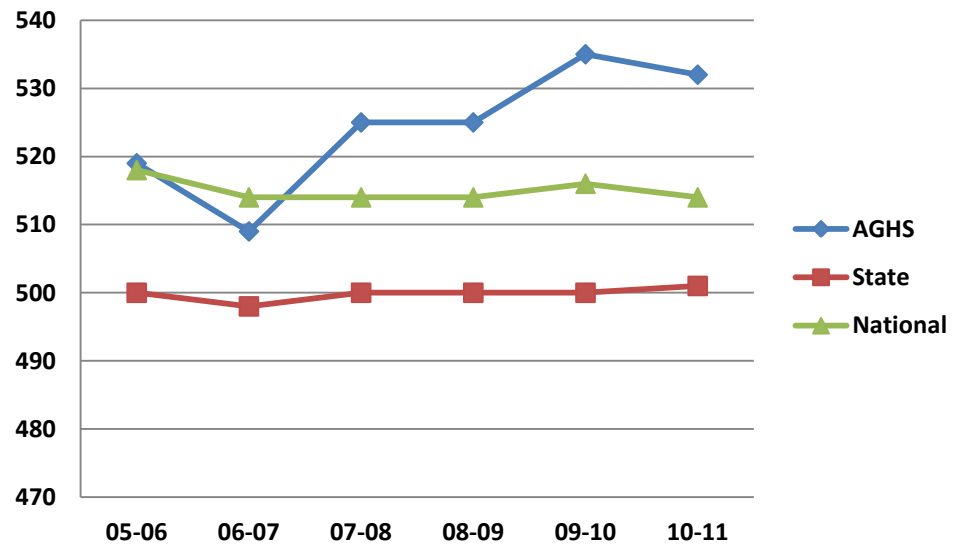
## Writing



## Reading



## Mathematics



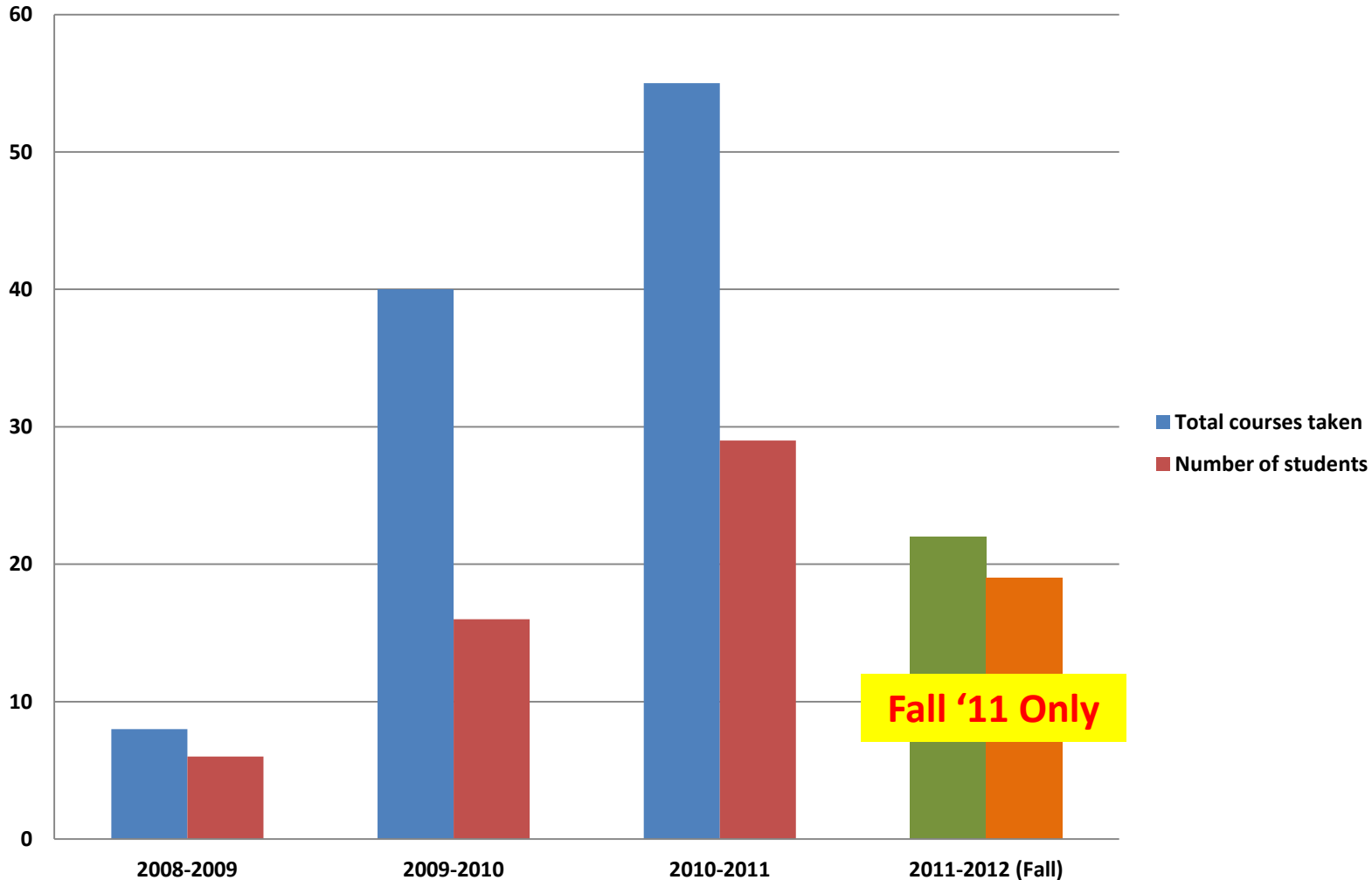
**Increase the district average score on the SAT exam annually**

District SAT average scores

2008 Scores	2013 Targets
Reading (513)	Reading (520)
Writing (495)	Writing (500)
Math (525)	Math (530)

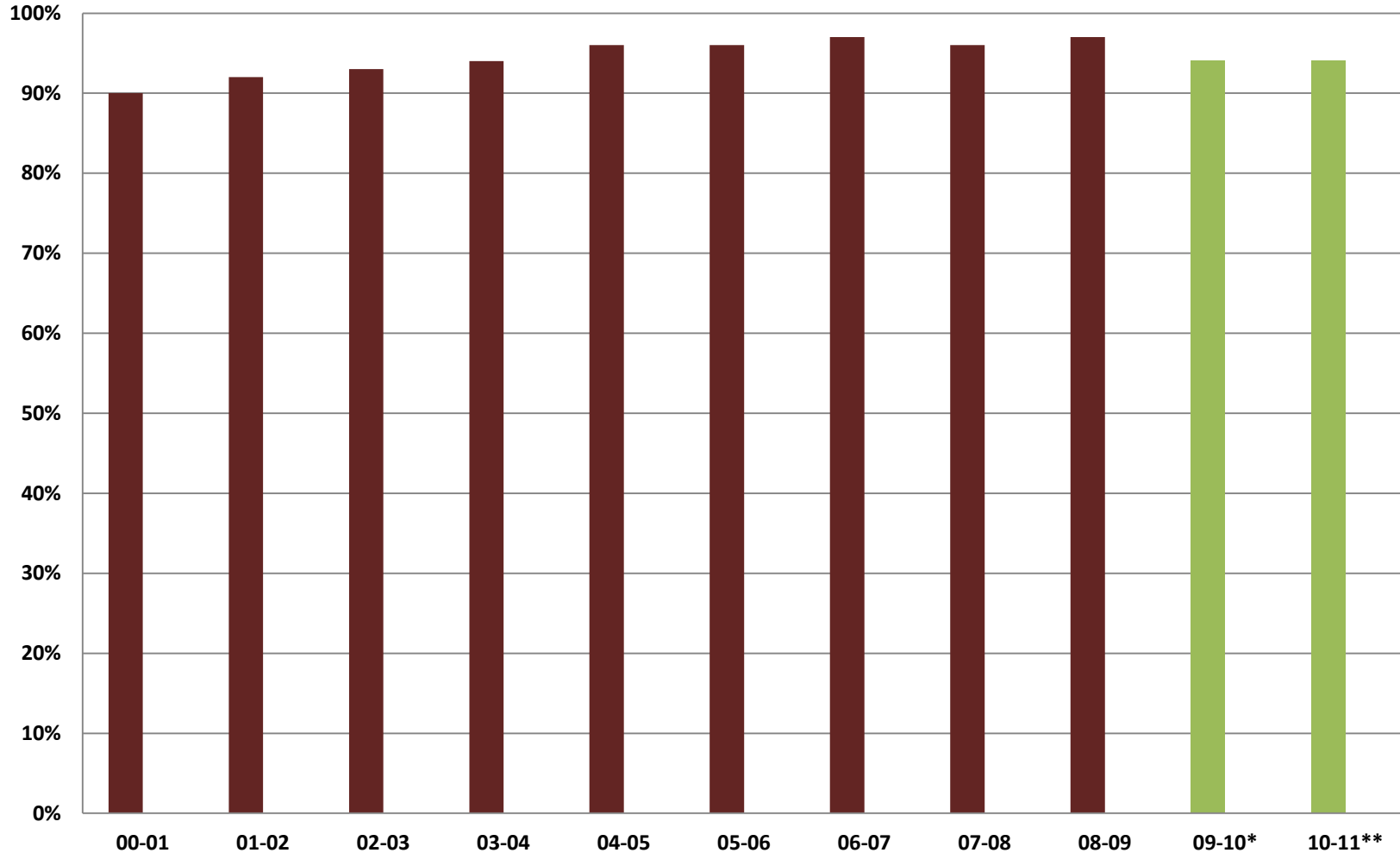
# Dual Enrollment

Implement Dual Enrollment Program beginning in the 2008-2009 school year. Monitor and evaluate program success measured by the number of students participating in the program and the number of college course credits earned by students in the program.



# AGHS Graduation Rate

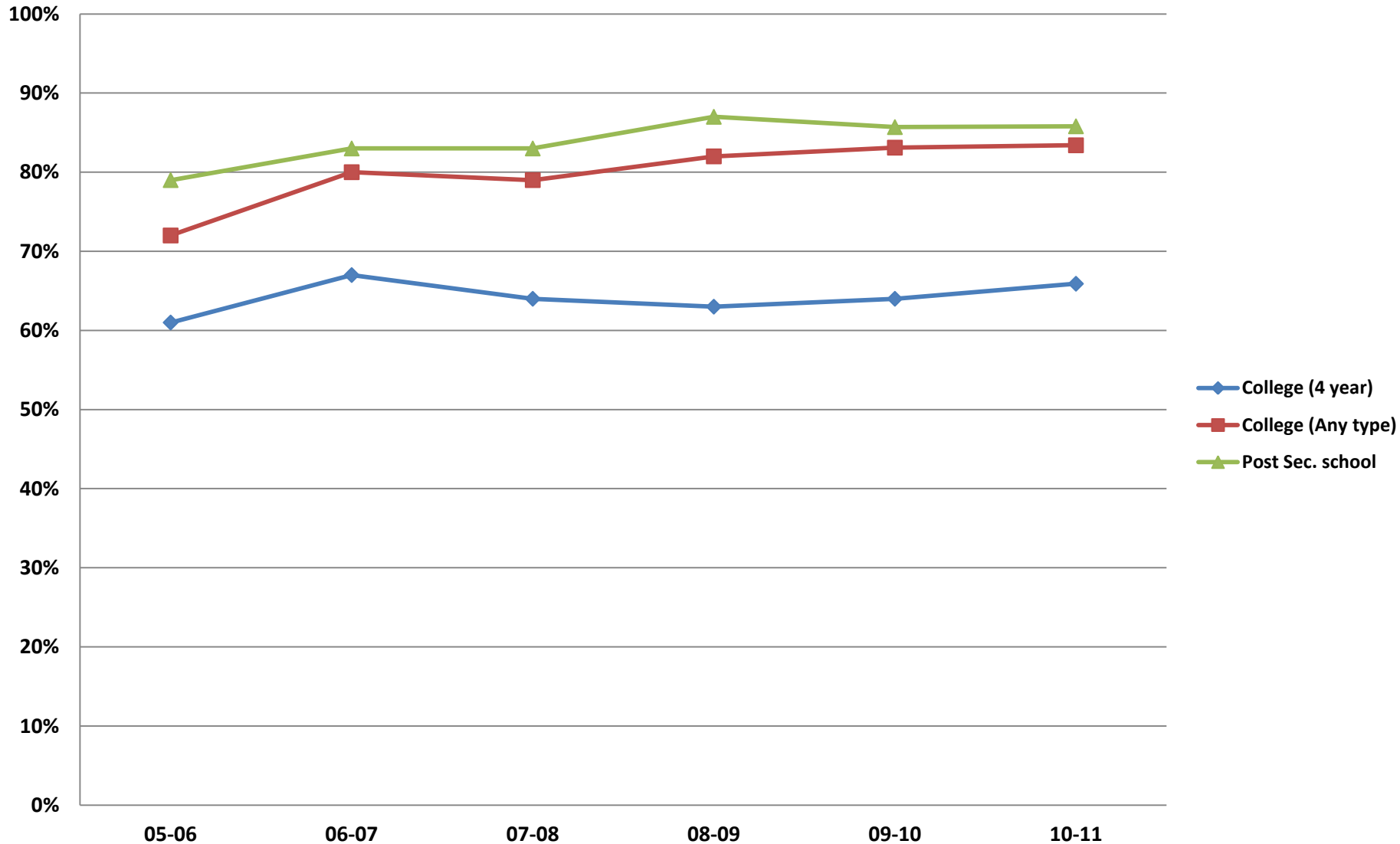
Increase the percentage of children attending a post secondary school from 79% to 89%.



\*Calculated using new 4-year cohort method

# Post Secondary Education

Increase the percentage of children attending a post secondary school from 79% to 89%.



***Student achievement is on the rise in AGSD !***

