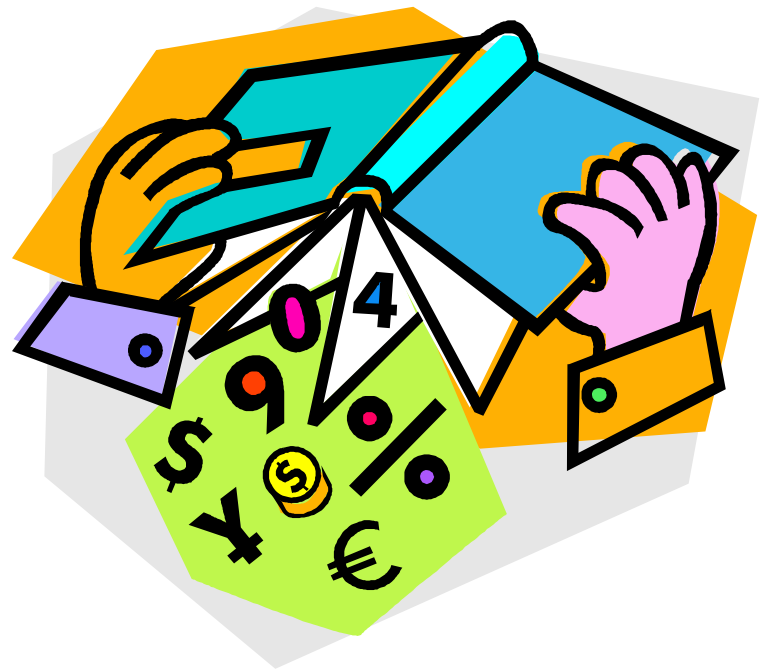


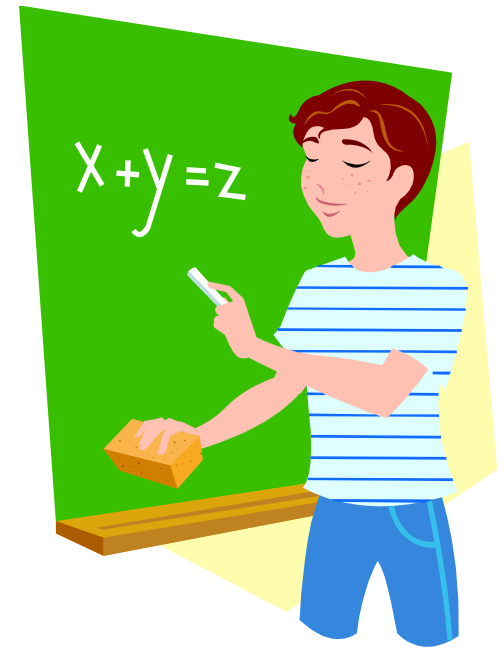
# AGSD Secondary Mathematics Grades 6-12

Focus Group Report  
May 27, 2010



# Mathematics Task Force

- Convened during the 2006-2007 school year
- Developed school & district recommendations
  - ***Increase the number of students who graduate with the mathematical knowledge and skills that they will need to be successful in demanding postsecondary educational programs and careers.***

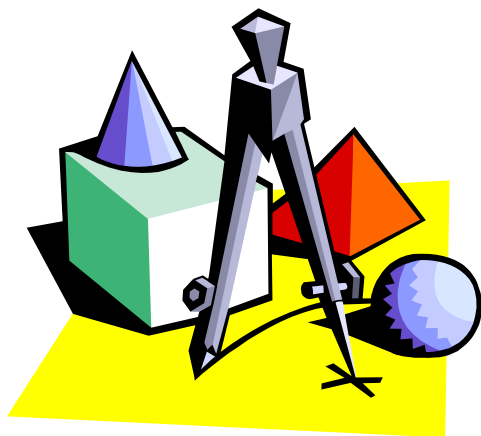


# Strategic Plan

## Academic Achievement

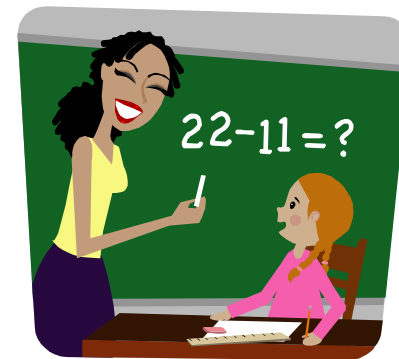
### Mathematics

*By 2013, 95% of all students will be proficient in Mathematics as measured annually by the PSSA.*

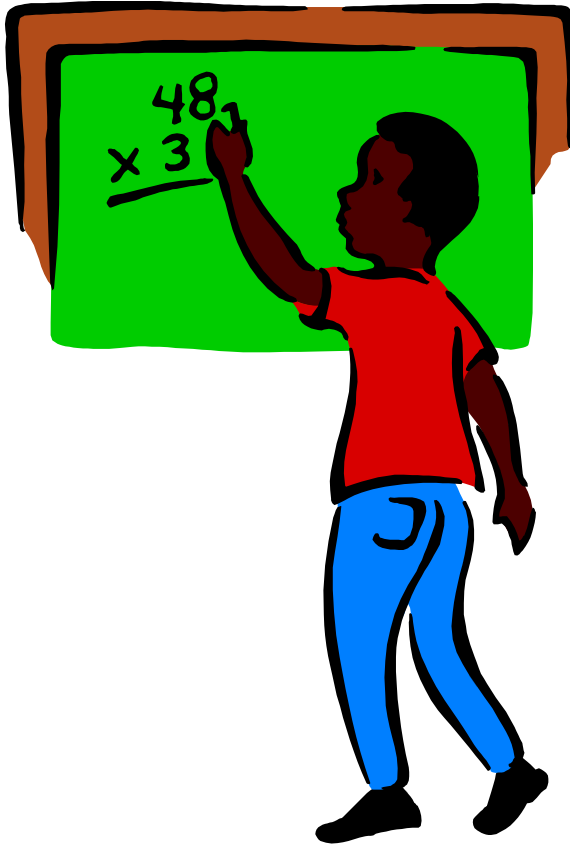


### 21<sup>st</sup> Century Learners

*Continue to increase the number of students successfully completing Algebra II by the end of 10<sup>th</sup> grade.*



# Work already completed...



## Secondary Leadership Council

- April 2007-September 2008
- Graduation requirements/credits
  - 4 credits
  - MS credit
- Promotion guidelines
  - Must pass math to go onto next grade
- Collapsing tracks

# Secondary Mathematics Focus Group

## Goal

*Examine options  
for acceleration  
of students in  
secondary  
mathematics*



# Timeline



- **Grade 6 Focus Group AGI (2008-2009)**
  - Examined options for acceleration for 2009-2010
  - Included mathematics teachers from AGI & FSEMS
  - Presented information regarding pilot to CAC in spring 2010
- **Grade 6 Prealgebra Pilot (2009-2010)**
  - Developed criteria for student identification
  - Implemented 2 sections across grade 6 with a total of 50 students
  - Utilized same materials as used in FSEMS
  - Developed pacing guides/common assessments
  - Conducted bridging activities between AGI & FSEMS

# Timeline



- **Secondary Focus Group (2009-2010)**
  - Includes mathematics teachers from AGI, FSEMS, AGHS
  - Conducted a series of work sessions beginning in winter
  - Reviewed progress of prealgebra pilot
    - Student progress
  - Studied and revised secondary course sequence
  - Revised course placement guidelines
  - Discussed implications for graduation requirements/credits

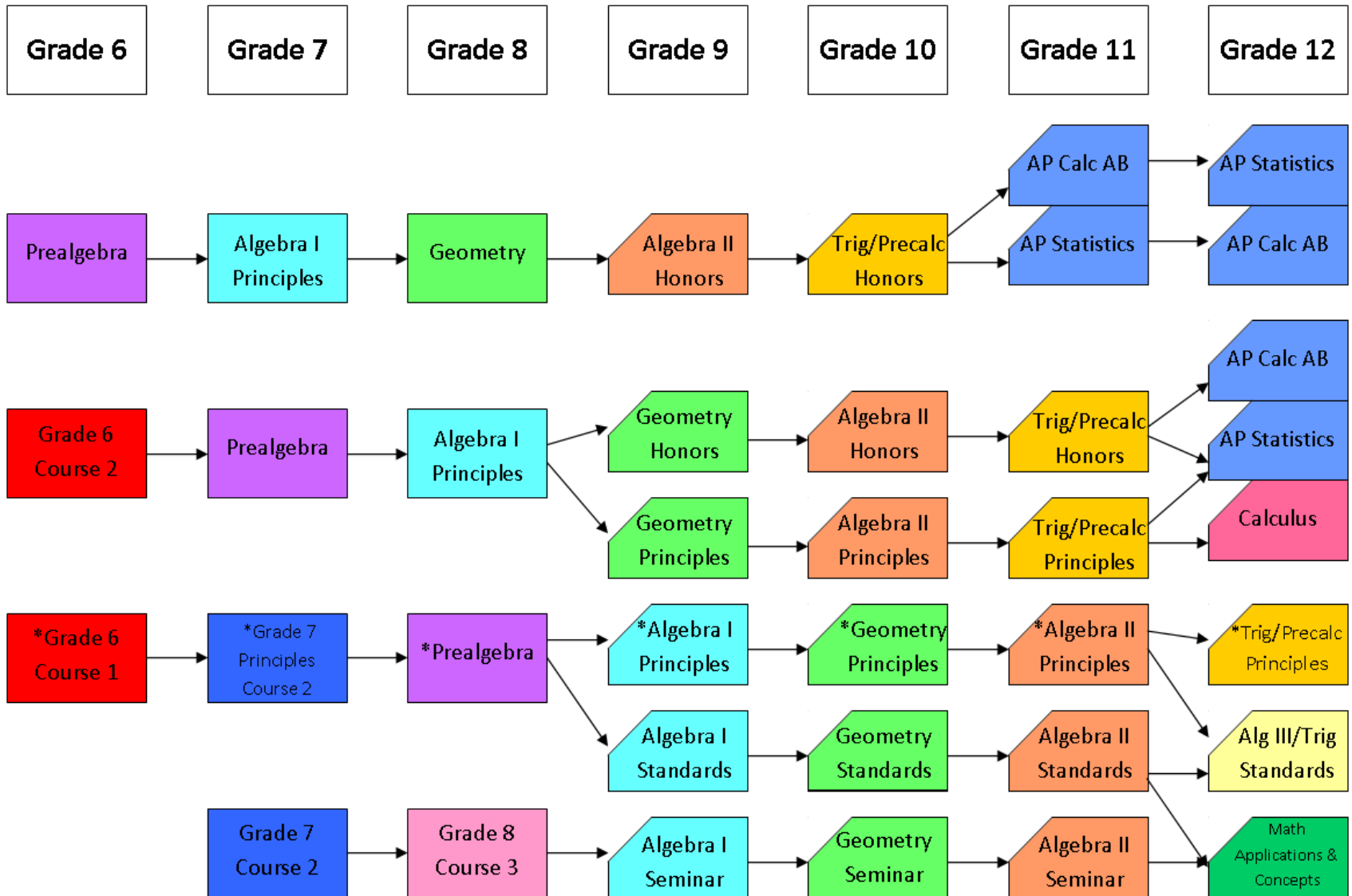
# Secondary Mathematics Course Sequence

- **Changes/Revisions**

- Grade 6 Course 2 (2010-2011)
- Grade 7 Algebra I Principles (2010-2011)
- Grade 8 Geometry (2011-2012)
- Grade 9 Algebra II Honors (2012-2013)

# 2009-2010 Avon Grove School District Secondary Mathematics Course Sequence

## Grades 6 to 12

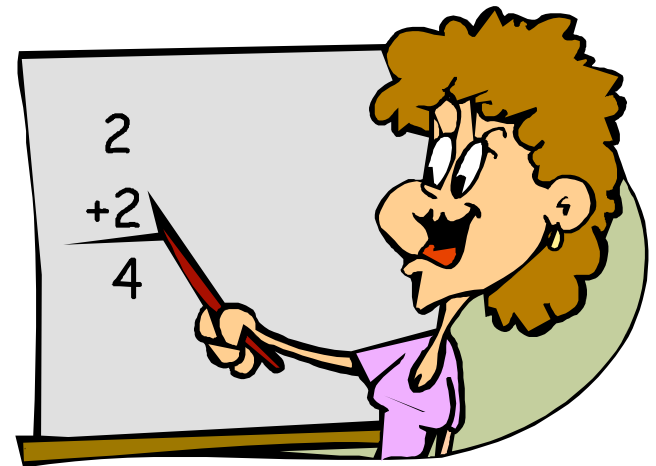


\*On Grade Level

# Course Placement Guidelines

## Guidelines include...

- MAP RIT Scores/Percentile Rank
- PSSA
- IOWA (Grade 6 Prealgebra, Grade 7)
- Teacher Recommendation
- Course Sequence
- Course Grades



# Secondary Mathematics Course Placement Guidelines

Draft 5/13/2010

Secondary Mathematics Course Placement Guidelines							
<b>Directions:</b> <i>The Secondary Mathematics Course Placement Guidelines are intended to be used to guide placement of students in the proper mathematics course. Multiple measures/indicators are represented to ensure that all variables regarding a student's performance are considered.</i>							
6th Grade Placement	RIT	%ile	PSSA	IOWA	Teacher Recommendation	Course Sequence	Course Grades
Prealgebra	235>	85%	Advanced	N/A	Evidence of participation, work completion, and critical thinking  Always, Sometimes, Rarely	Evidence of successful completion of prerequisite course	"Meets" in all categories w/ exception of rote facts
Grade 6 Course 2	230>	75%	Proficient/Advanced	N/A			"Meets" and/or "Strongly Progressing" in all benchmarks of Numbers & Operations and Algebraic Concepts w/ exception of rote facts
Grade 6 Course 1	<229	72%	N/A	N/A			N/A
7th Grade Placement	RIT	%ile	PSSA	IOWA	Teacher Recommendation	Course Sequence	Course Grades
Algebra I Principles	240>	85%	Advanced	81%	Evidence of participation, work completion, and critical thinking  Always, Sometimes, Rarely	Evidence of successful completion of prerequisite course	
Prealgebra	235>	74%	Proficient/Advanced	N/A			
Grade 7 Principles Course 2	223-234	45%-72%	Proficient/Advanced	N/A			
Grade 7 Course 2	<222	42%	N/A	N/A			N/A
8th Grade Placement	RIT	%ile	PSSA	IOWA	Teacher Recommendation	Course Sequence	Course Grades
Geometry	246>	85%	Advanced	N/A	Evidence of participation, work completion, and critical thinking	Evidence of successful completion of prerequisite course	
Algebra I Principles	240>	74%	Proficient/Advanced	81%			
Prealgebra	229-235	47%-62%	Proficient/Advanced				
Grade 8 Course 3	<228	45%	N/A	N/A	N/A	N/A	

# Graduation Requirements/Credits

## During middle school...

- 1 high school mathematics credit can be acquired
- Credit must be earned in grade 8



# Next Steps

## Secondary Focus Group 2010-2011

- Monitor student progress in
  - Grade 7 Algebra I Principles
  - Grade 6 Prealgebra
  - Grade 6 Course 2
- Plan for Grade 8 Geometry for 2011-2012
- Collaborate to ensure alignment of courses across buildings

