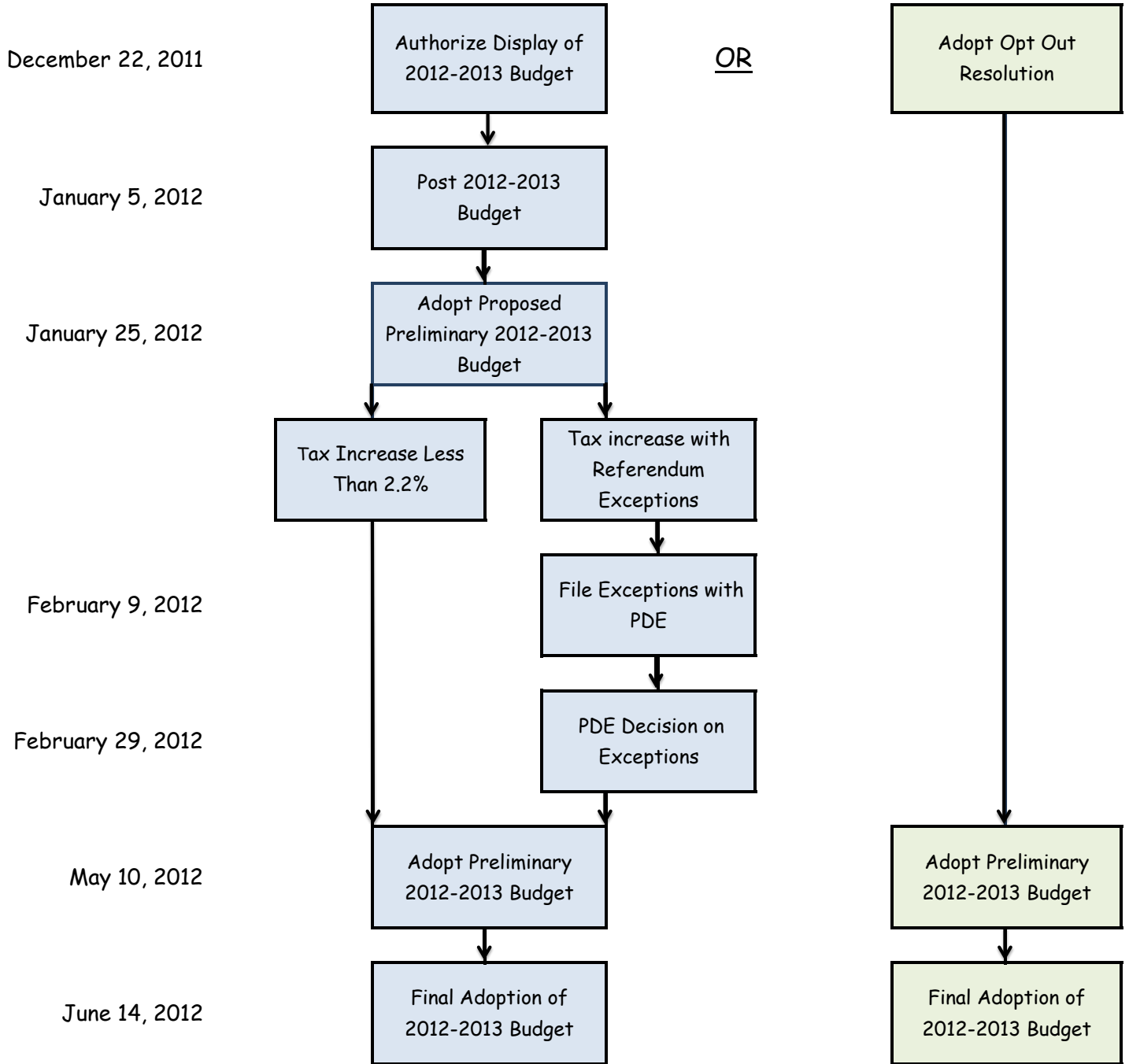


Avon Grove School District
General Fund Budget
2012-2013



Avon Grove School District
 General Fund Budget
 2012 - 2013

	2011-2012 Budget	2011-2012 Projected	2012-2013 Budget	2012-2013 Budget*
Revenues	\$72,586,421	\$73,024,736	\$73,934,325	\$74,547,207
Expenditures	<u>\$75,578,368</u>	<u>\$75,362,530</u>	<u>\$77,576,275</u>	<u>\$77,576,275</u>
Excess (Deficit)	(\$2,991,947)	(\$2,337,794)	(\$3,641,950)	(\$3,029,068)
Beginning Fund Balance	<u>\$18,642,818</u>	<u>\$19,572,964</u>	<u>\$17,235,170</u>	<u>\$17,235,170</u>
Ending Fund Balance	<u>\$15,650,871</u>	<u>\$17,235,170</u>	<u>\$13,593,220</u>	<u>\$14,206,102</u>
Fund Balance "Target"				
Designated PSERS/Med	\$9,000,000	\$9,000,000	\$8,000,000	\$8,000,000
Undesignated	<u>\$6,046,000</u>	<u>\$6,206,102</u>	<u>\$6,206,102</u>	<u>\$6,206,102</u>
	<u>\$15,046,000</u>	<u>\$15,206,102</u>	<u>\$14,206,102</u>	<u>\$14,206,102</u>
Excess (Deficit) of "Target"	<u>\$604,871</u>	<u>\$2,029,068</u>	<u>(\$612,882)</u>	<u>-0-</u>

* Includes a Real Estate Tax increase of \$612,882, .35 mills, +1.34%

Avon Grove School District
General Fund Budget
2012-2013

December 22, 2011

Adopt a Resolution Authorizing Proposed
Preliminary Budget Display and Advertising

OR

Adopt a Resolution to Opt Out of Act 1 process
and limit tax increase to 2.2%, Avon Grove
School District Act 1 Limit

January 5, 2012

Deadline to post 2012 - 2013 Proposed
Preliminary Budget

OR

Adopt a Resolution to Opt Out of Act 1
process

January 25, 2012

Deadline to Adopt a Preliminary Budget
Deadline to Adopt Authorization for
Referendum Exceptions

Avon Grove School District
2012-2013 General Fund Budget
December 8, 2011

RECOMMENDATION

- ★ Adopt a Resolution to Opt Out of Act 1 Process and Limit Real Estate Tax Increase to 2.2% (Act 1 Limit)
- ★ Continue the Budget Process
- ★ Establish Parameters for 2012-2013 Budget/Tax Levy
- ★ Re-evaluate impact of 2012-2013 Commonwealth Budget (February 2012)
- ★ Adopt Preliminary Budget - May 10, 2012
- ★ Adopt Final Budget - June 14, 2012