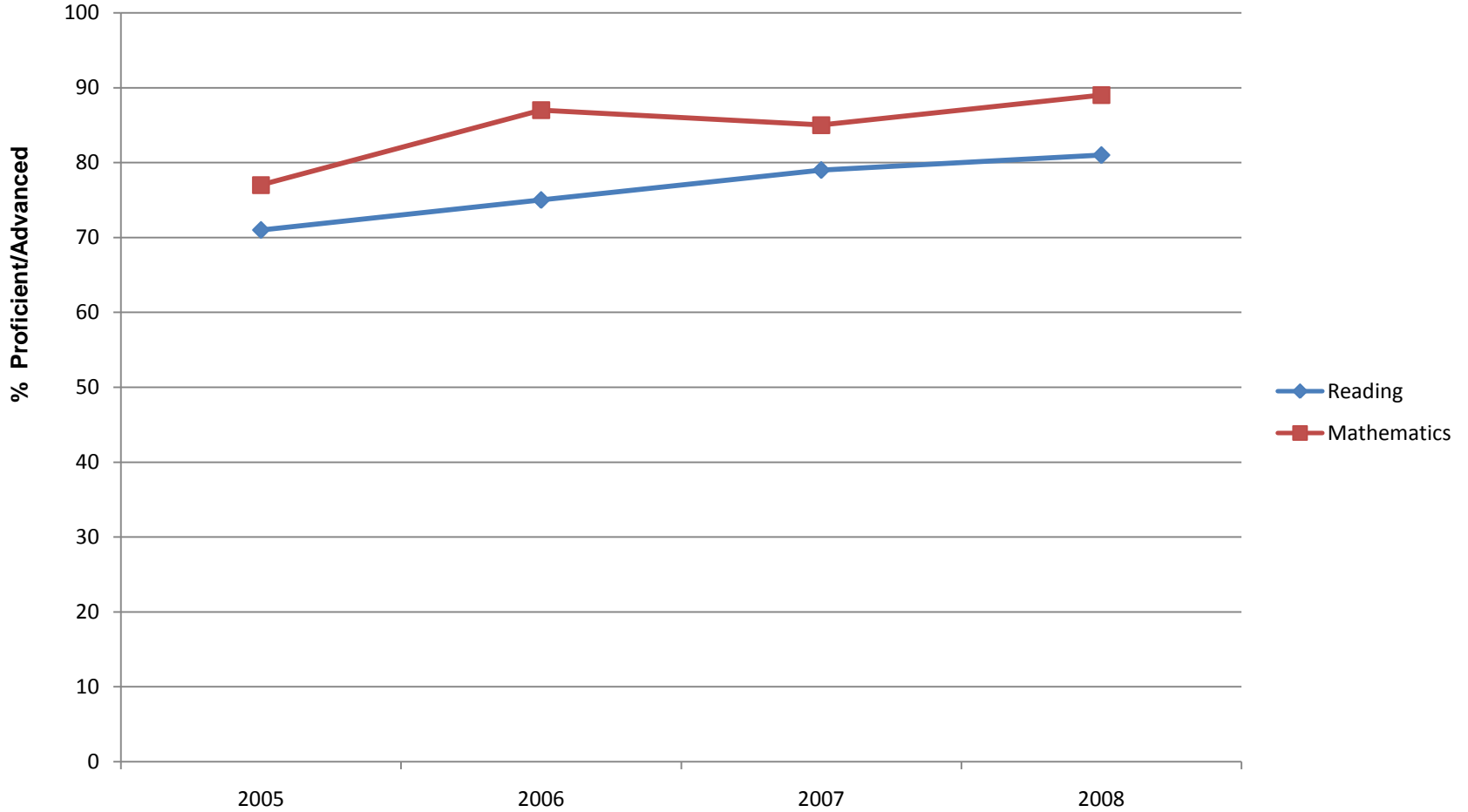
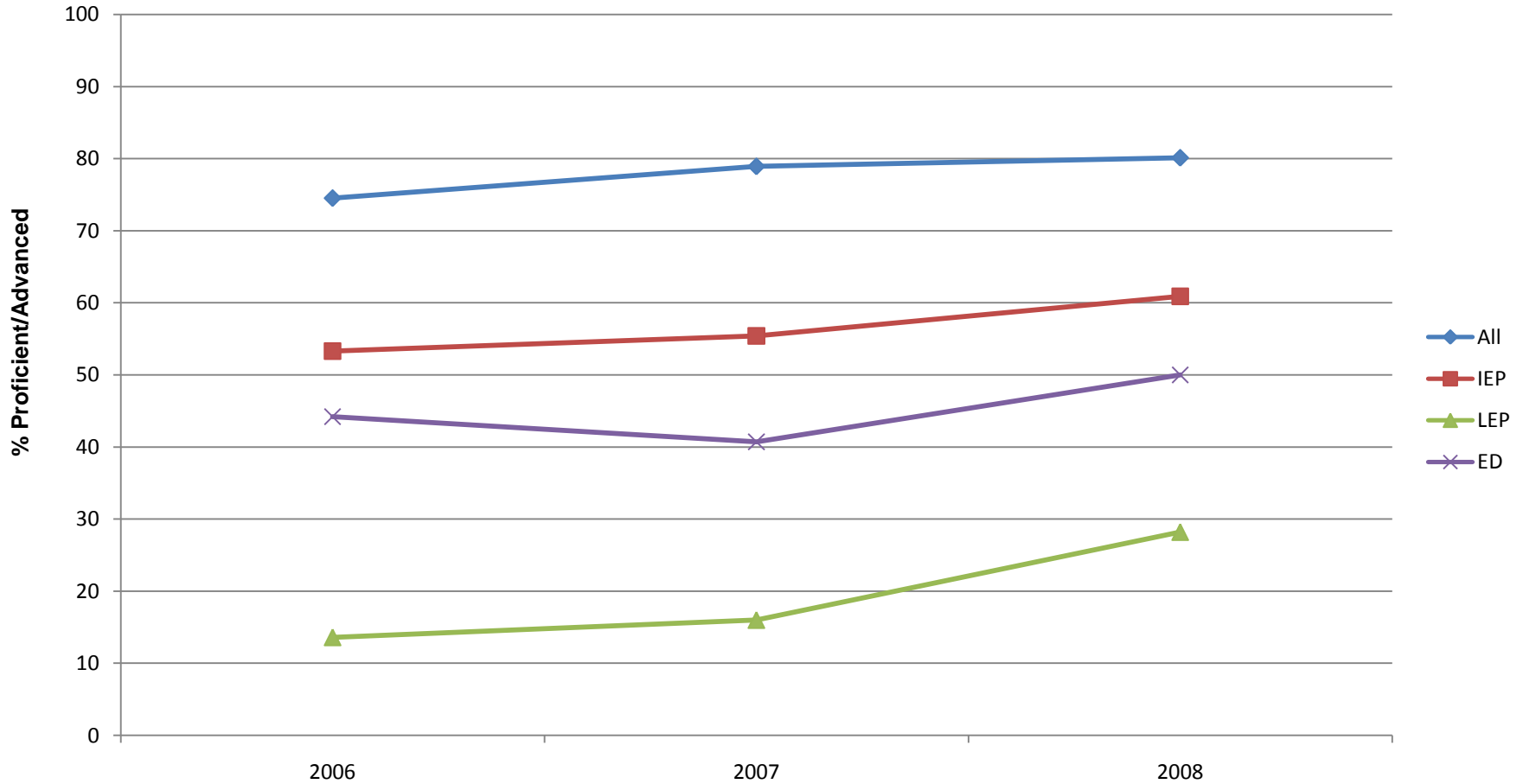


# GRADE 3 PSSA



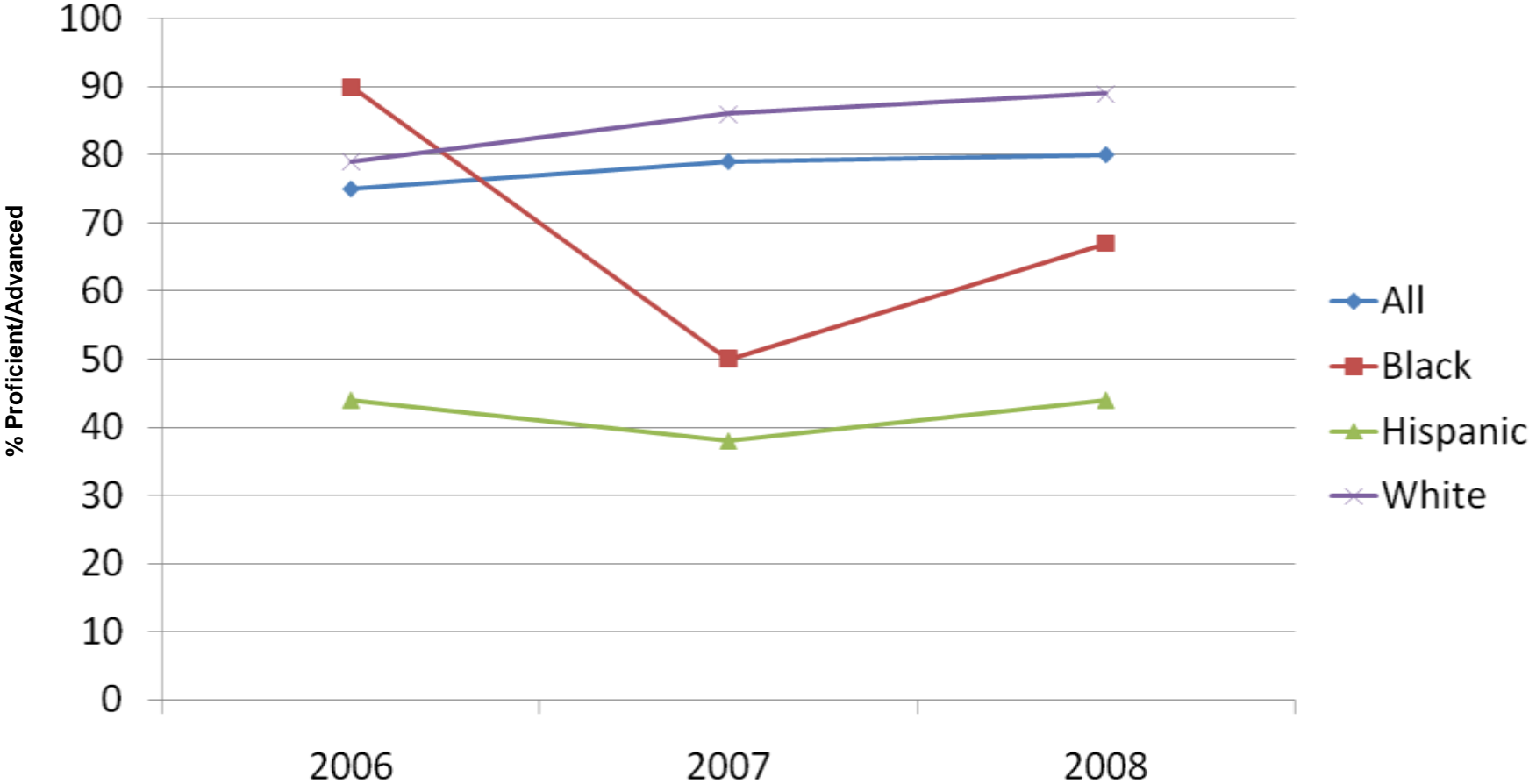
# GRADE 3 READING SUBGROUPS



Note: In order to be considered a subgroup N = 40 or more

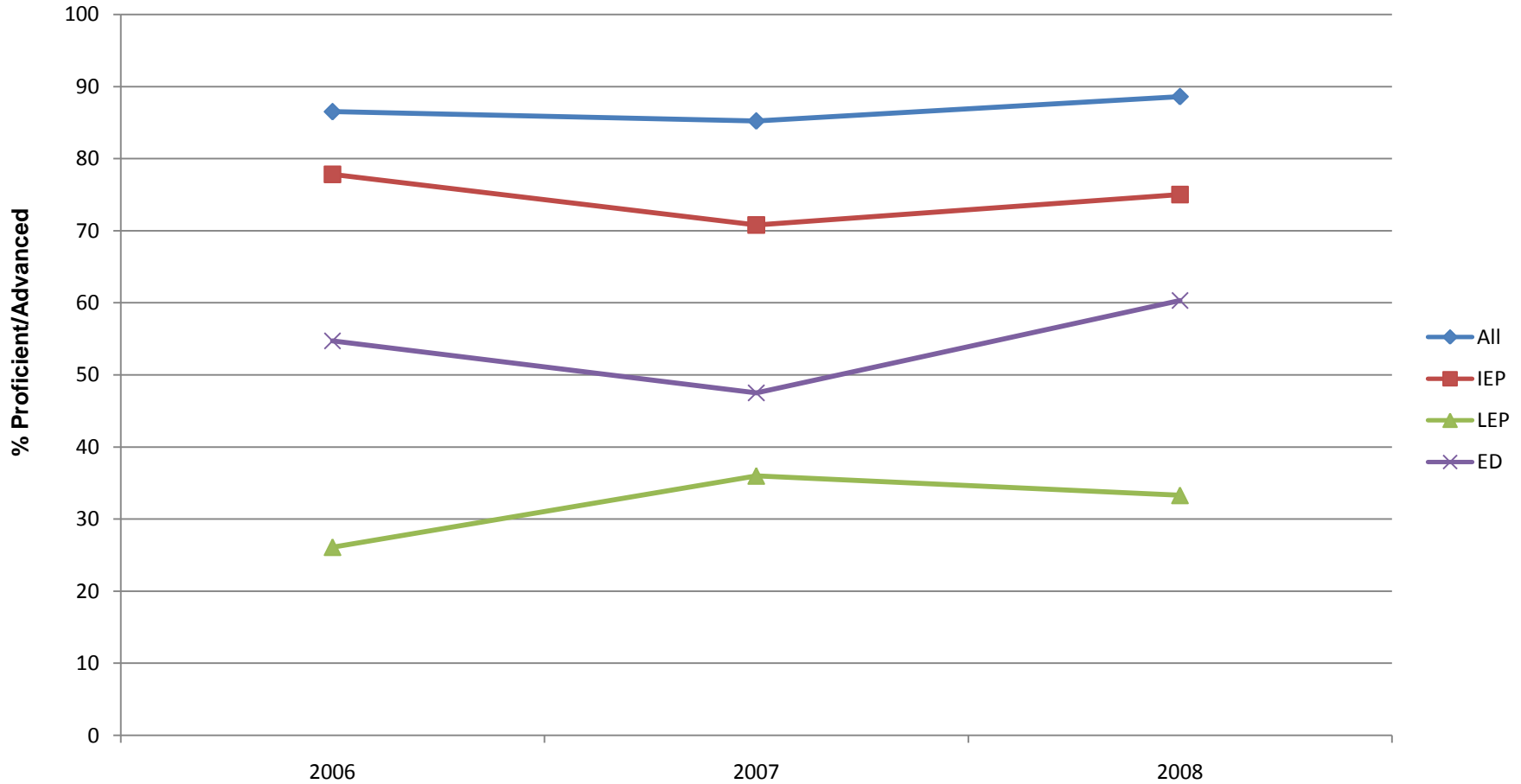
IEP- Individualized Education Program  
LEP- Limited English Proficiency  
ED- Economically Disadvantaged

# GRADE 3 READING ETHNICITY



Note: In order to be considered a subgroup N = 40 or more

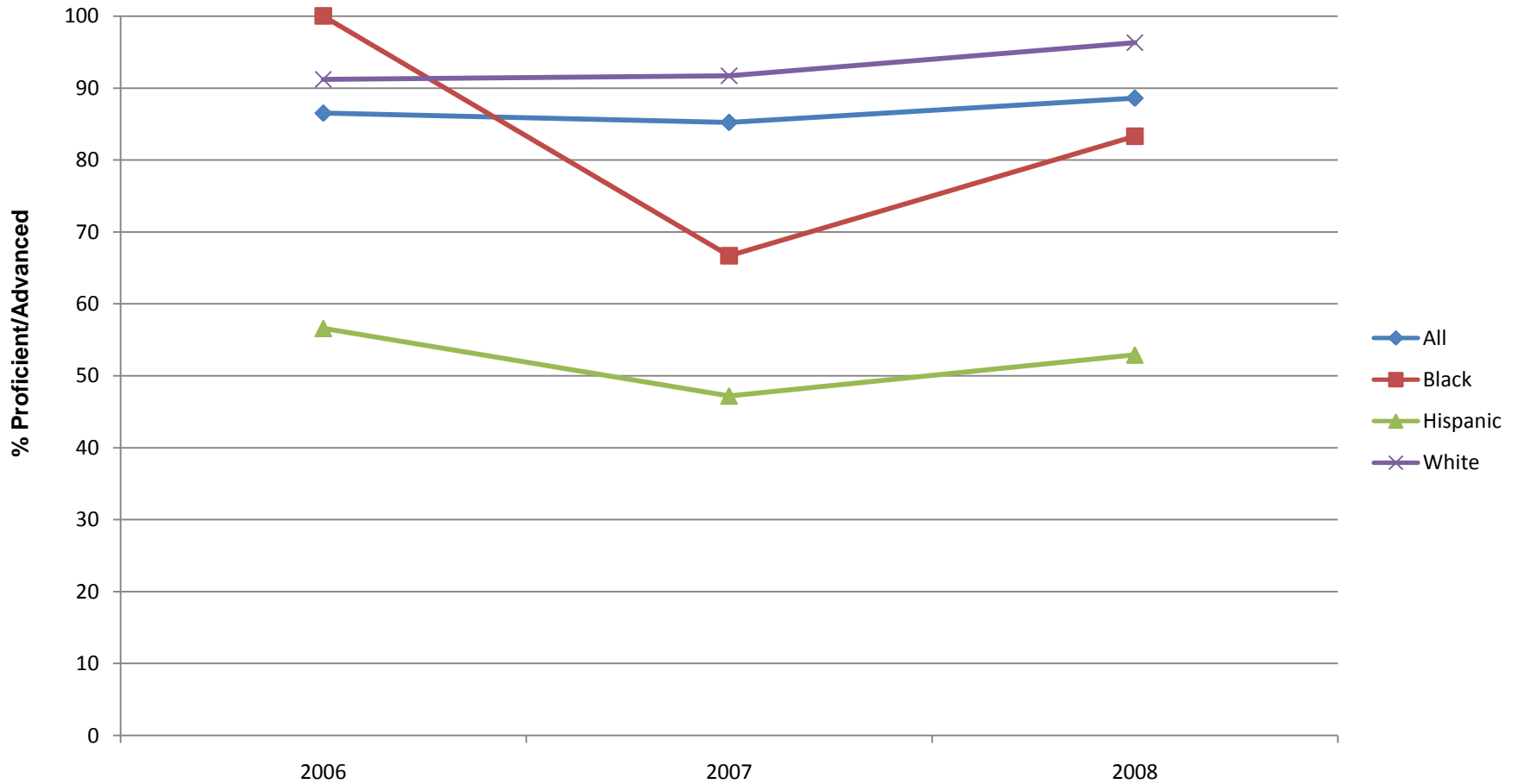
# GRADE 3 MATH SUBGROUPS



Note: In order to be considered a subgroup N = 40 or more

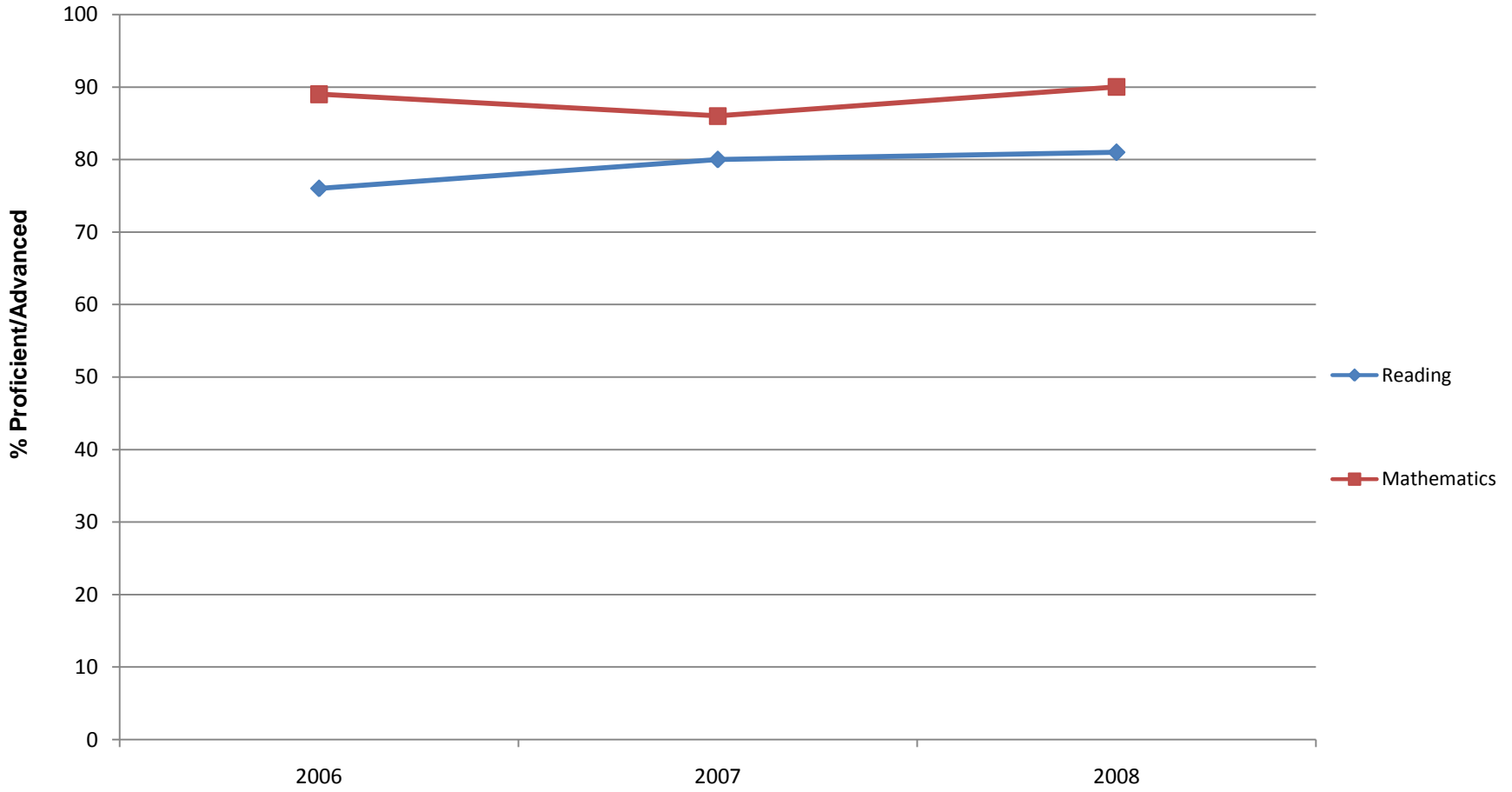
IEP- Individualized Education Program  
LEP- Limited English Proficiency  
ED- Economically Disadvantaged

# GRADE 3 MATH ETHNICITY

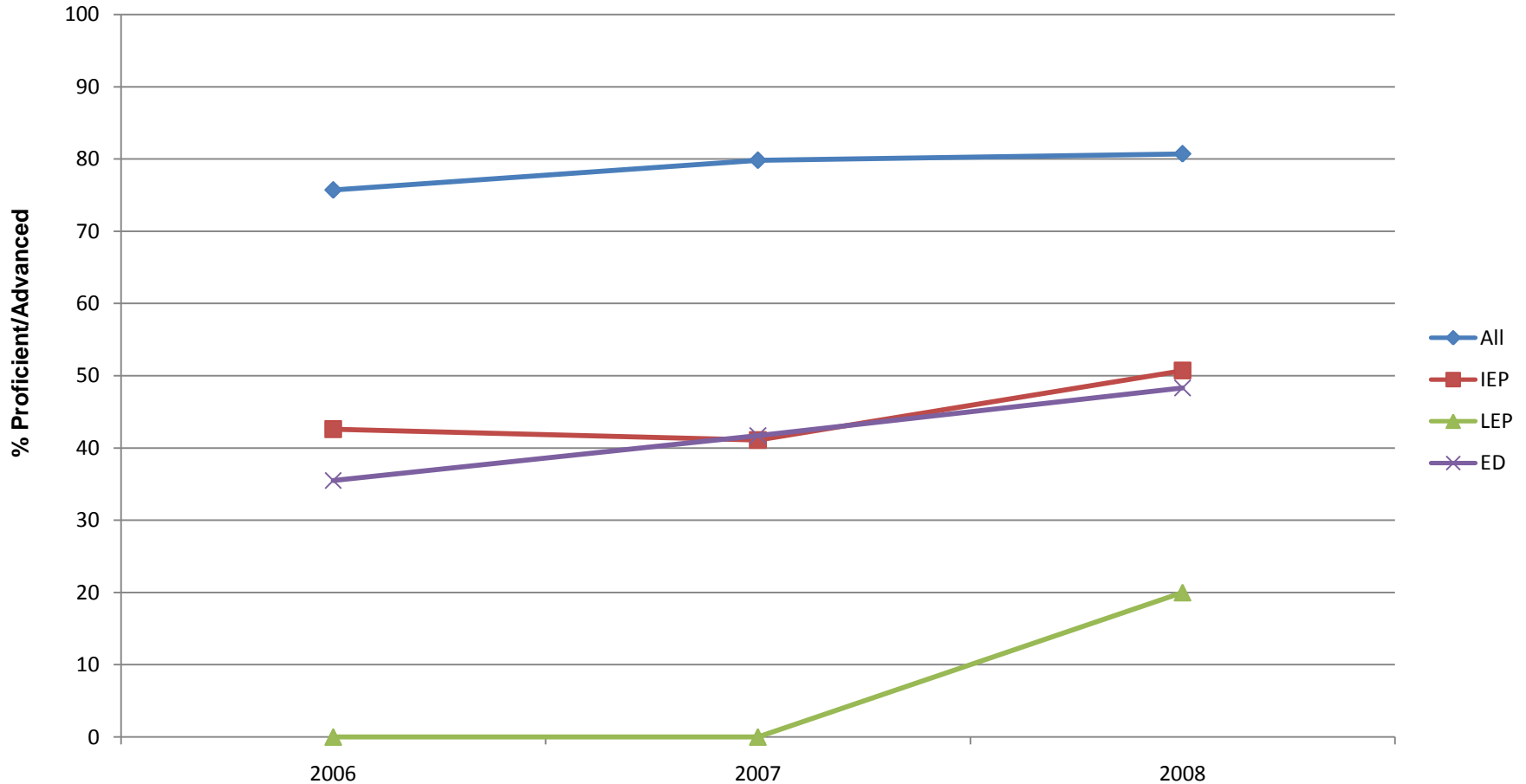


Note: In order to be considered a subgroup N = 40 or more

# GRADE 4 PSSA



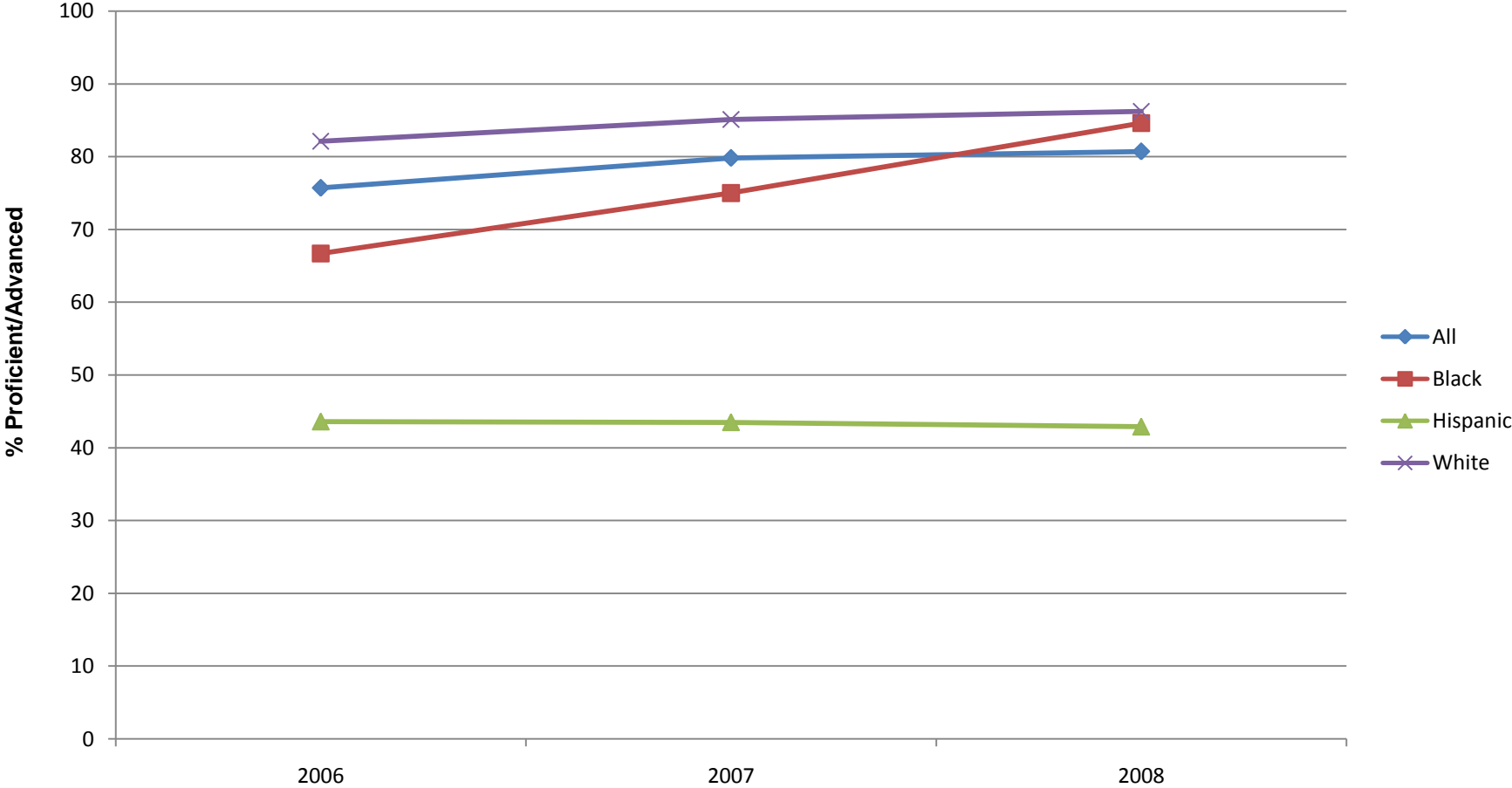
# GRADE 4 READING SUBGROUPS



Note: In order to be considered a subgroup N = 40 or more

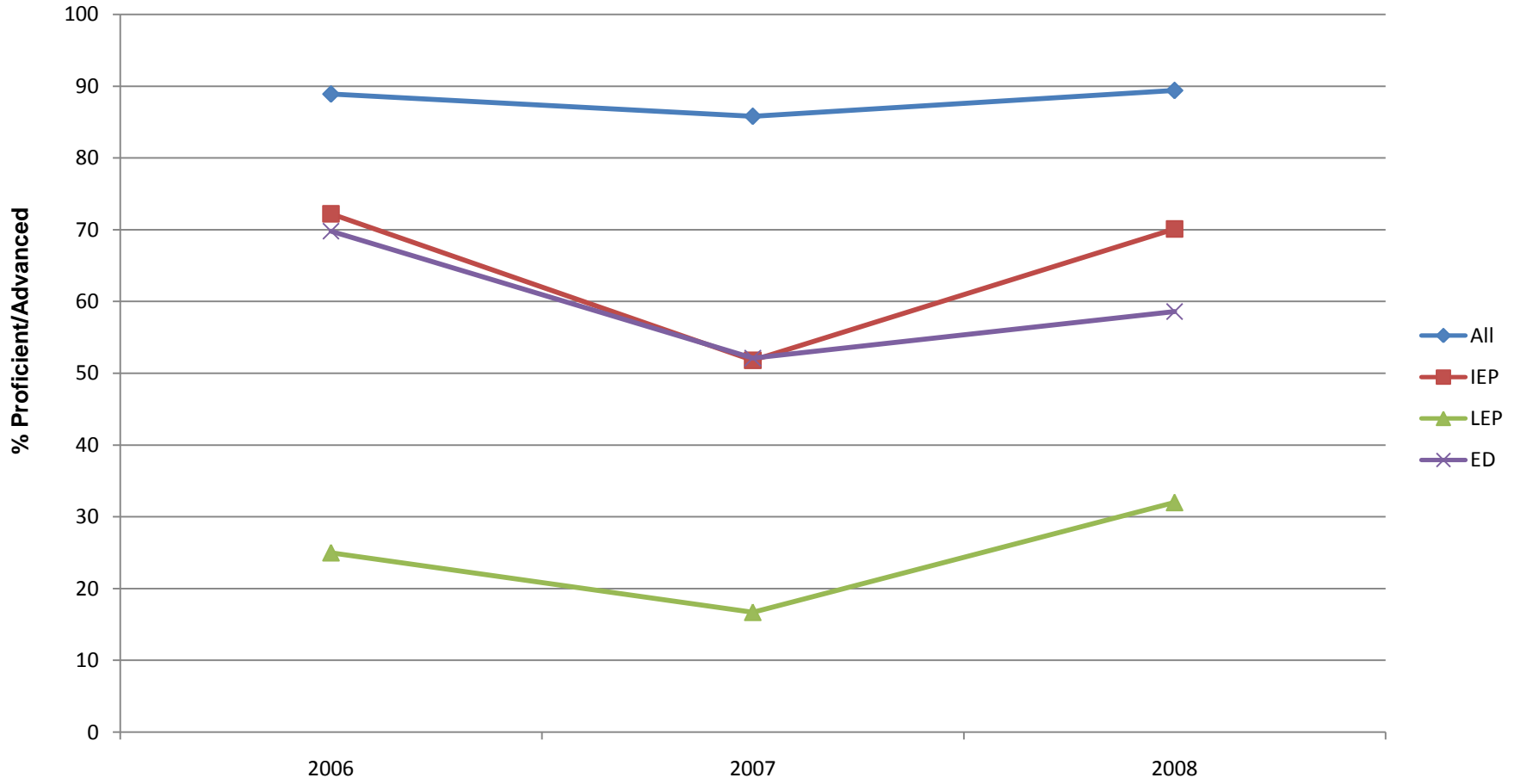
IEP- Individualized Education Program  
LEP- Limited English Proficiency  
ED- Economically Disadvantaged

# GRADE 4 READING ETHNICITY



Note: In order to be considered a subgroup N = 40 or more

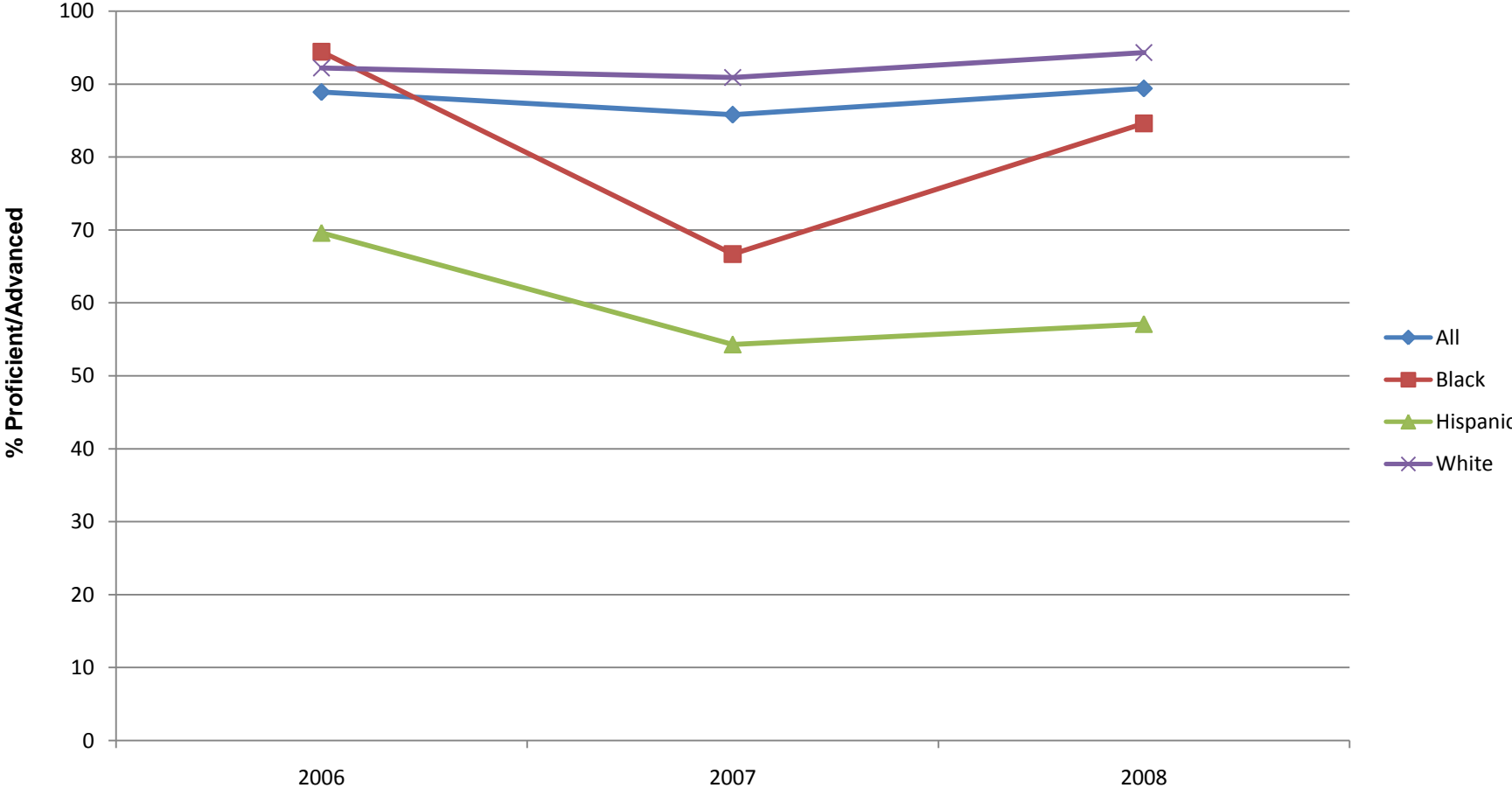
# GRADE 4 MATH SUBGROUPS



Note: In order to be considered a subgroup N = 40 or more

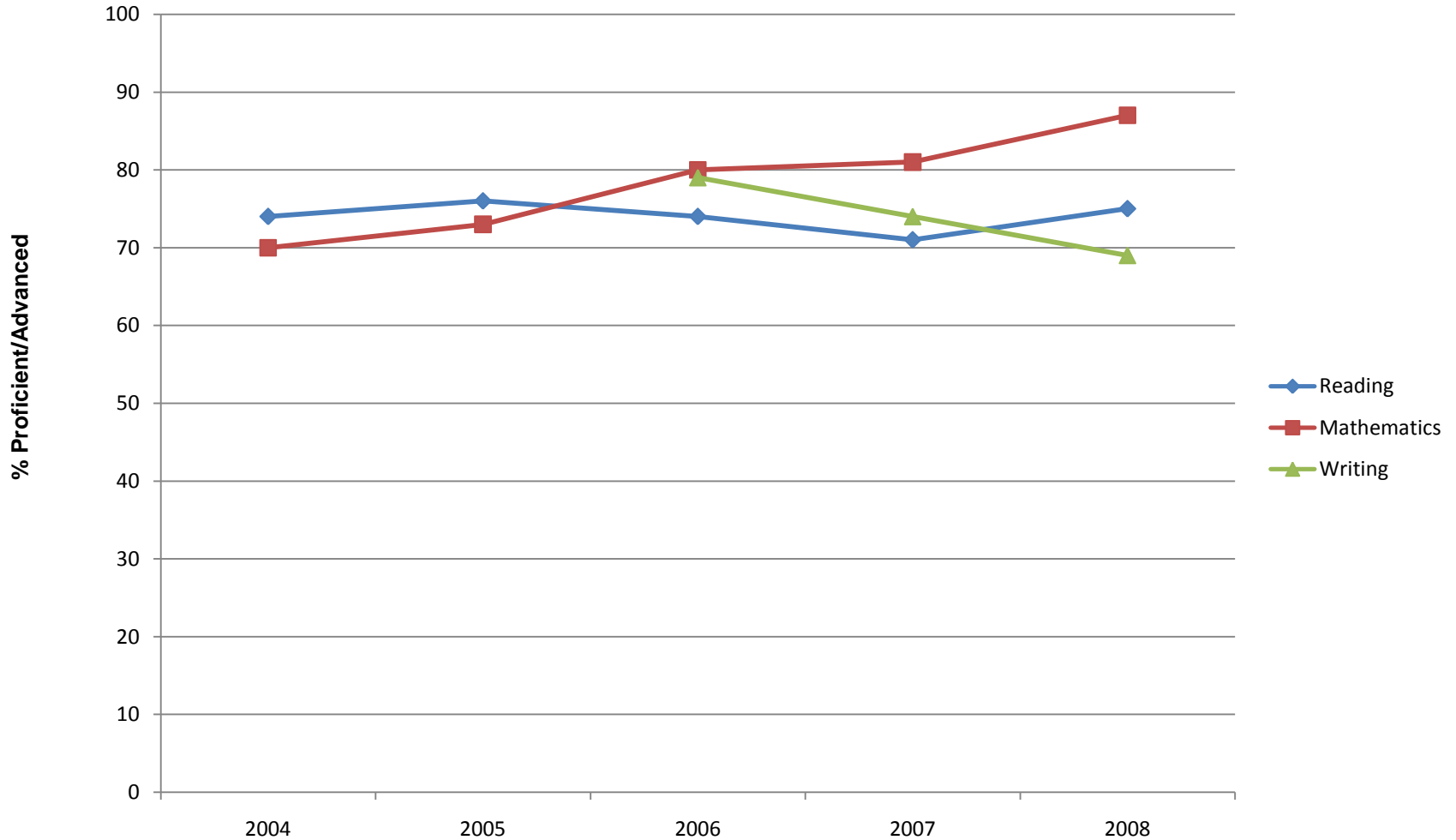
IEP- Individualized Education Program  
LEP- Limited English Proficiency  
ED- Economically Disadvantaged

# GRADE 4 MATH ETHNICITY

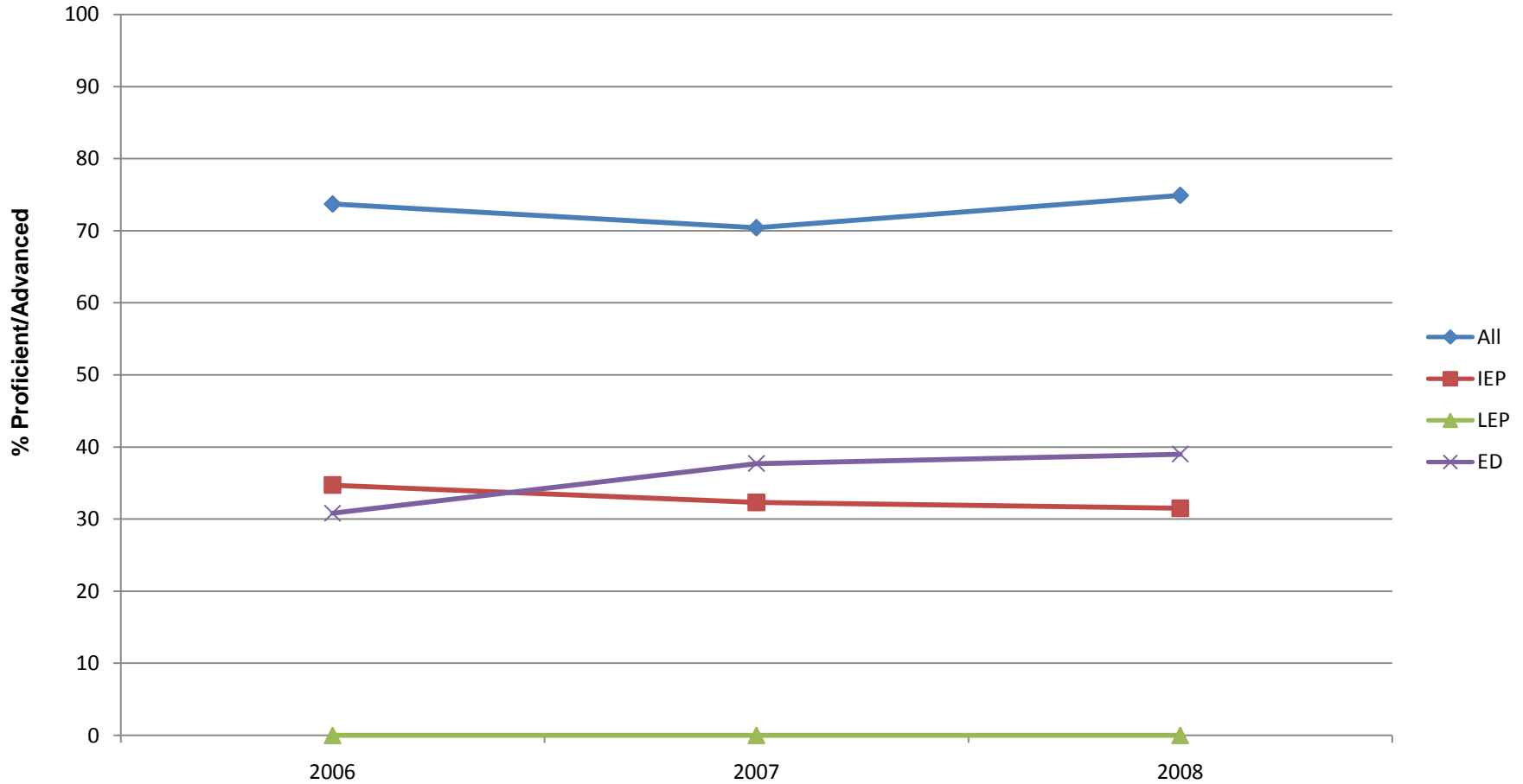


Note: In order to be considered a subgroup N = 40 or more

# GRADE 5 PSSA



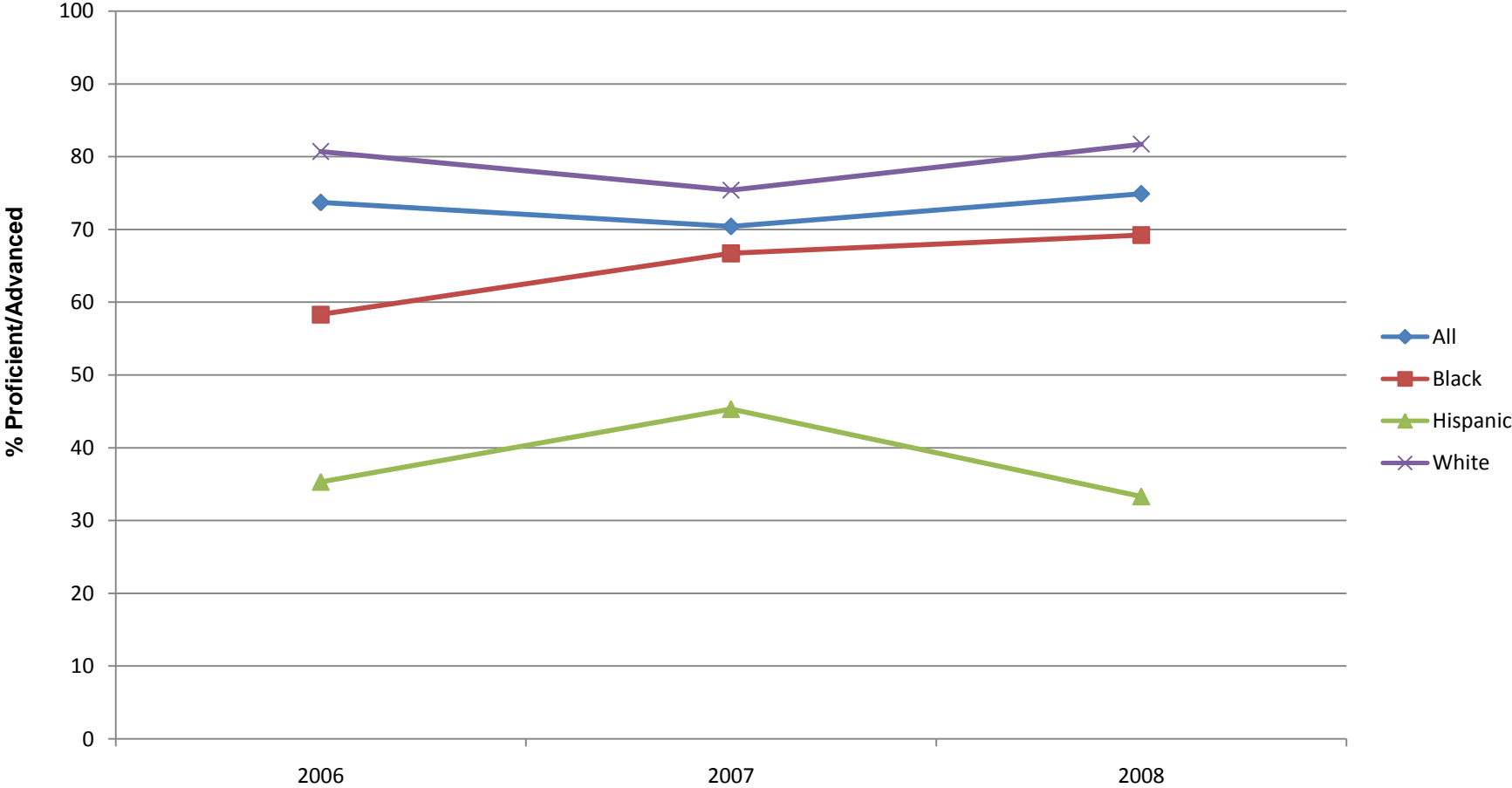
# GRADE 5 READING SUBGROUPS



Note: In order to be considered a subgroup N = 40 or more

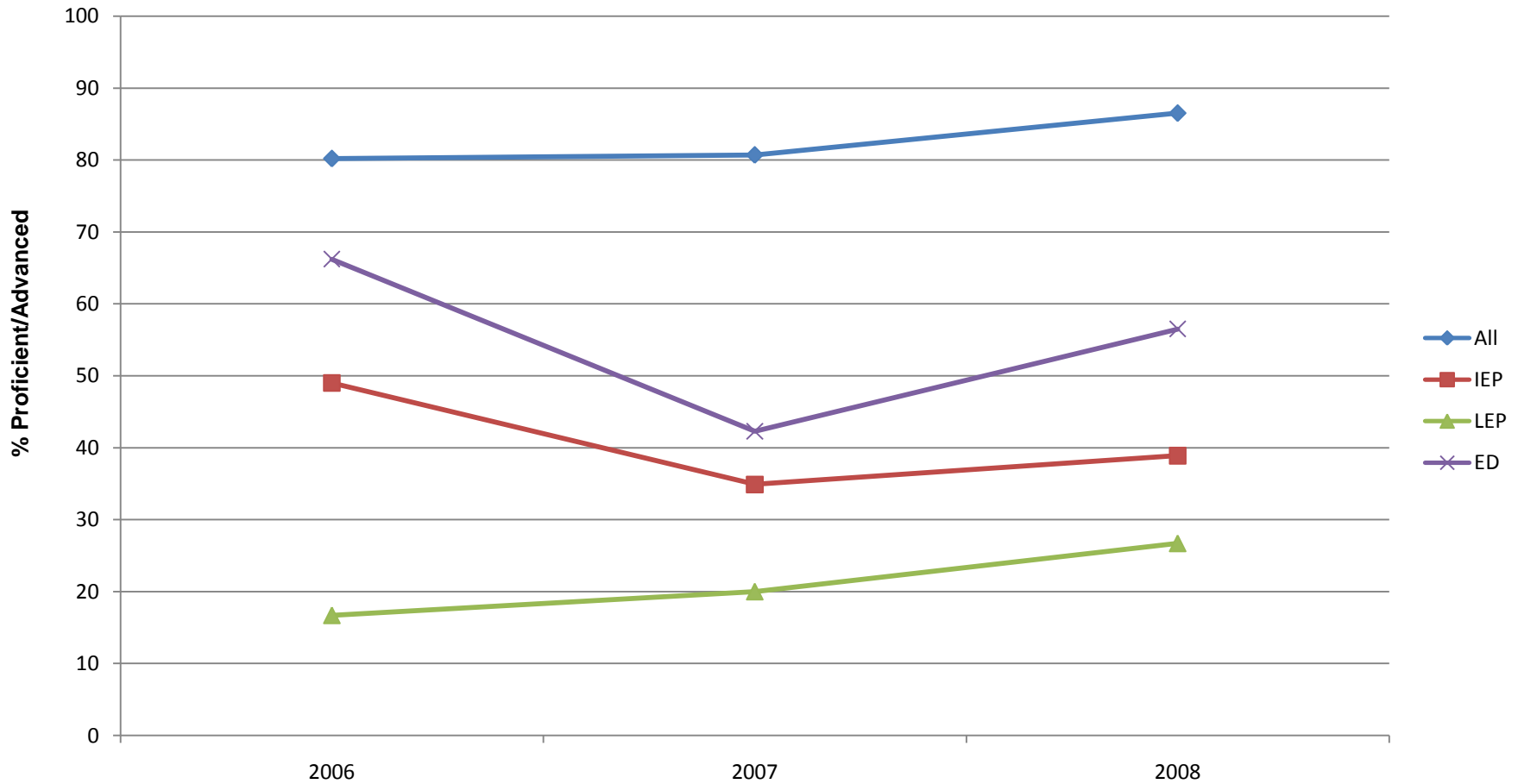
IEP- Individualized Education Program  
LEP- Limited English Proficiency  
ED- Economically Disadvantaged

# GRADE 5 READING ETHNICITY



Note: In order to be considered a subgroup N = 40 or more

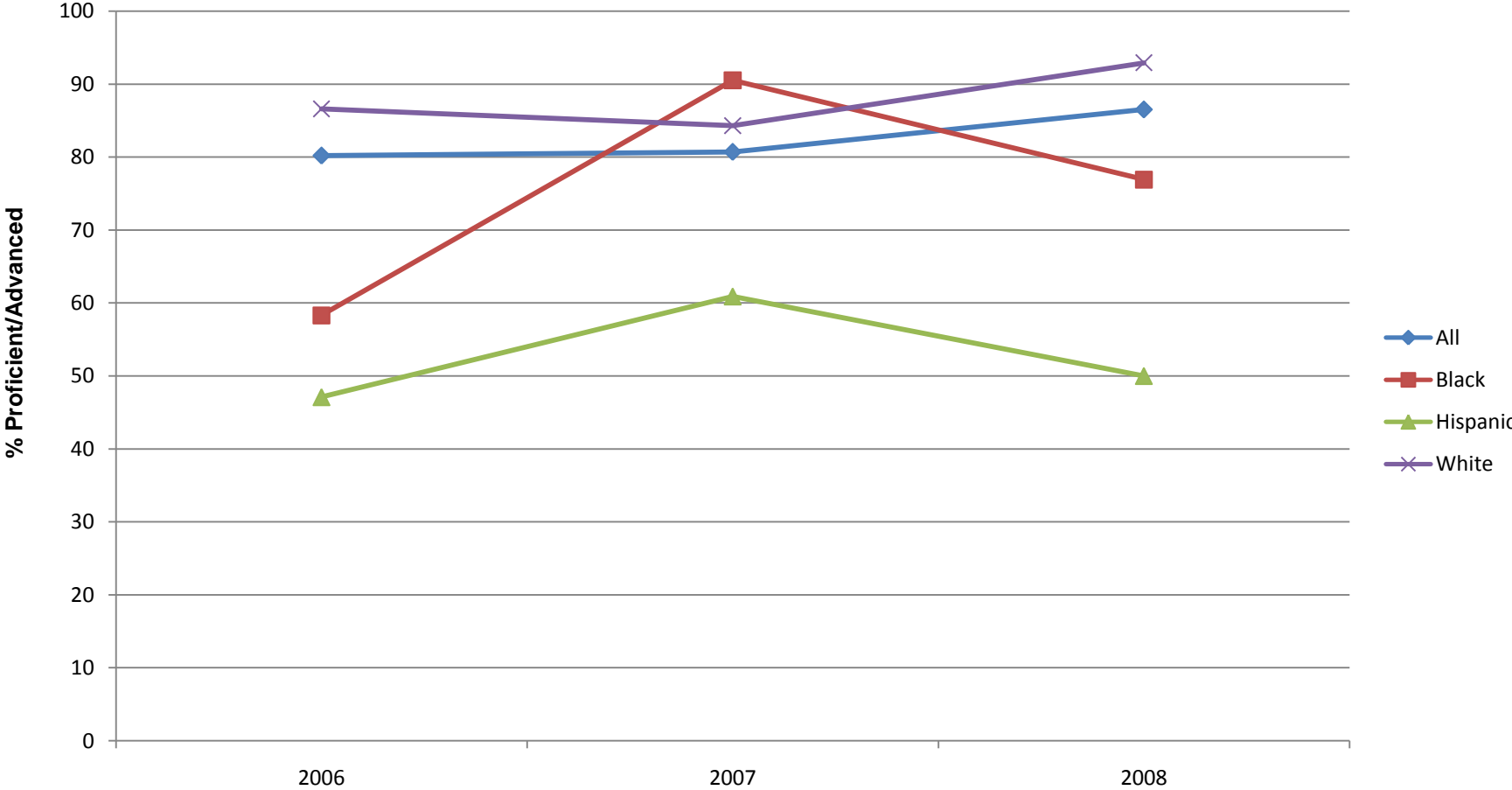
# GRADE 5 MATH SUBGROUPS



Note: In order to be considered a subgroup N = 40 or more

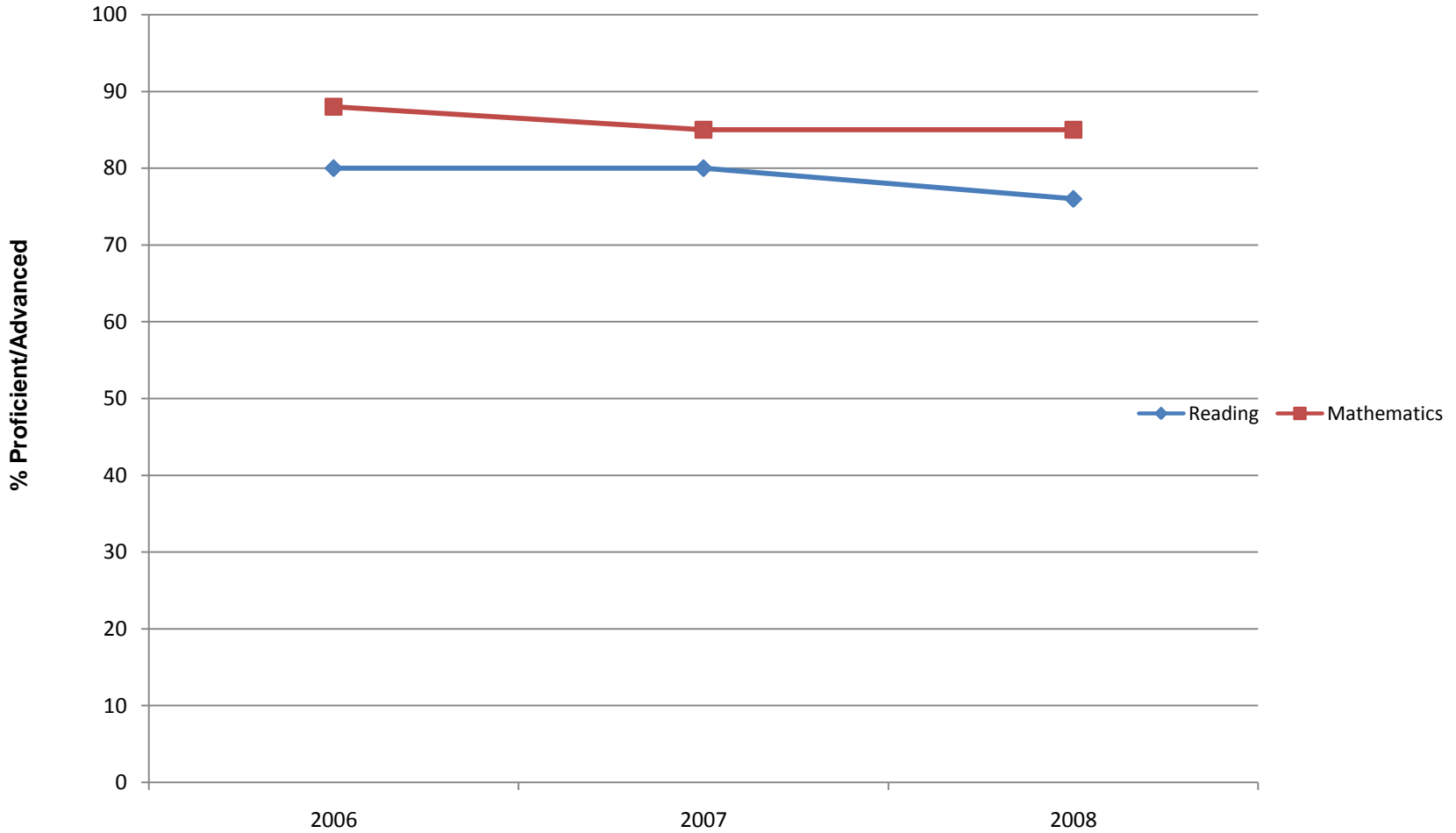
IEP- Individualized Education Program  
LEP- Limited English Proficiency  
ED- Economically Disadvantaged

# GRADE 5 MATH ETHNICITY

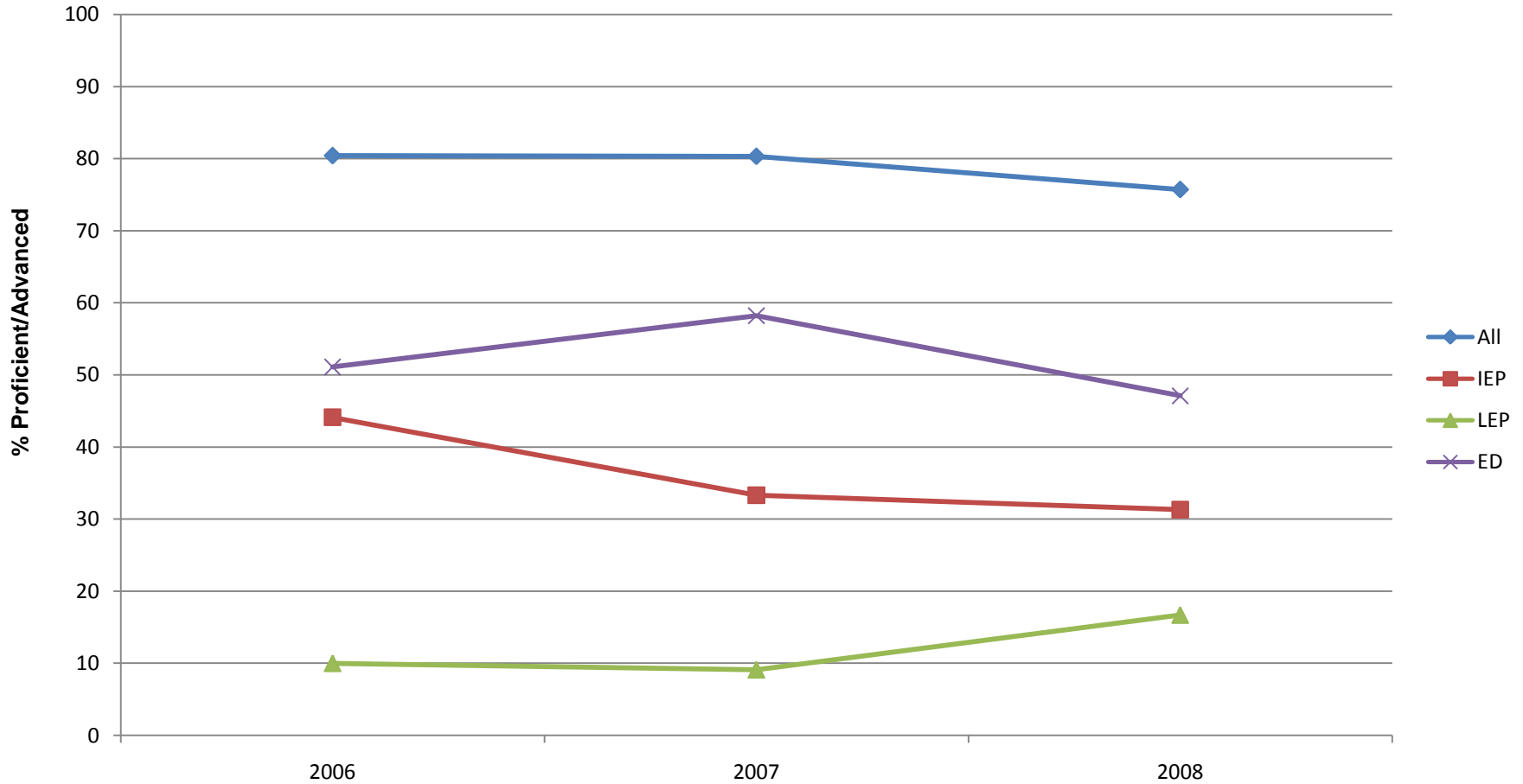


Note: In order to be considered a subgroup N = 40 or more

# GRADE 6 PSSA



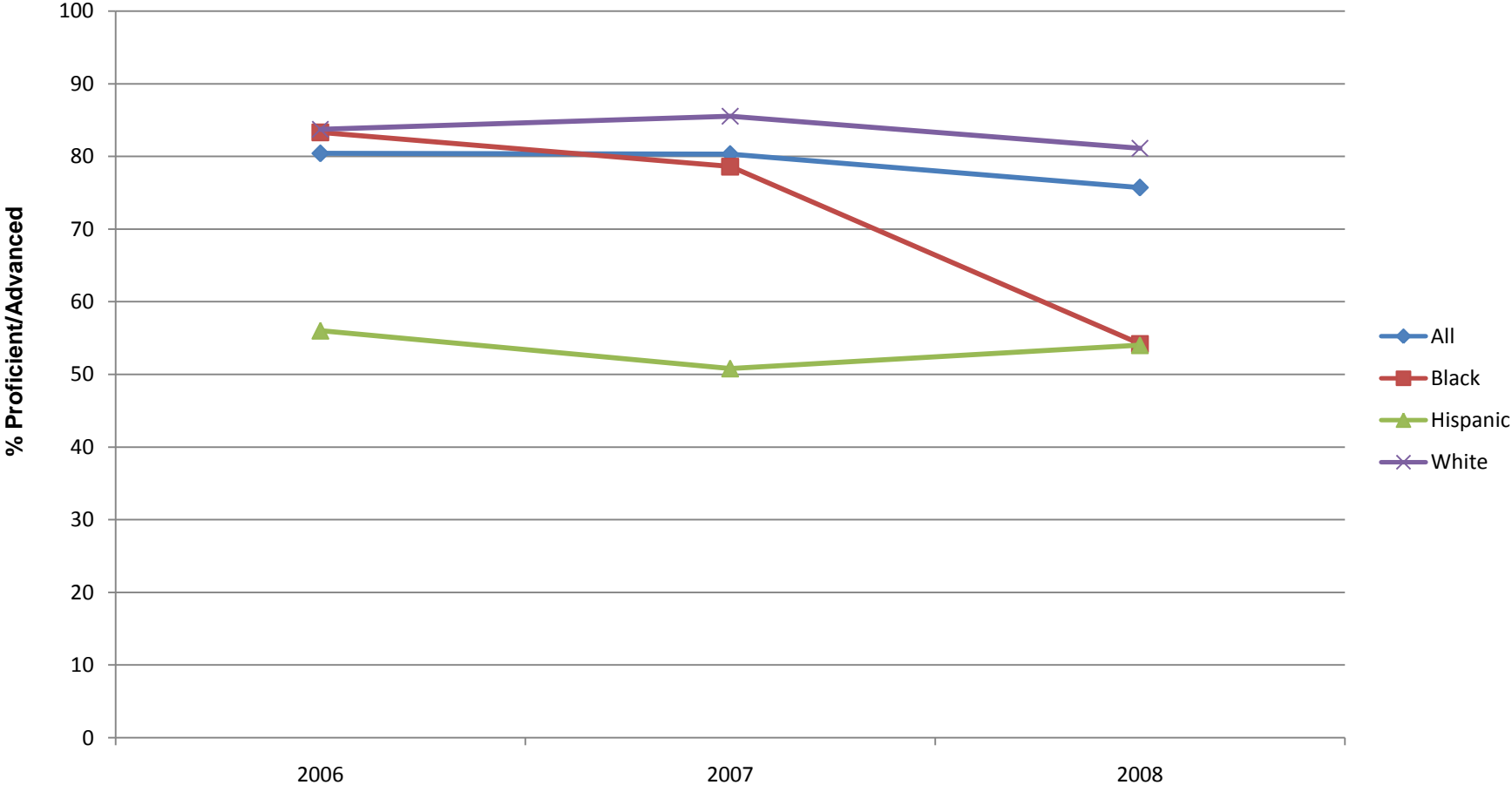
# GRADE 6 READING SUBGROUPS



Note: In order to be considered a subgroup N = 40 or more

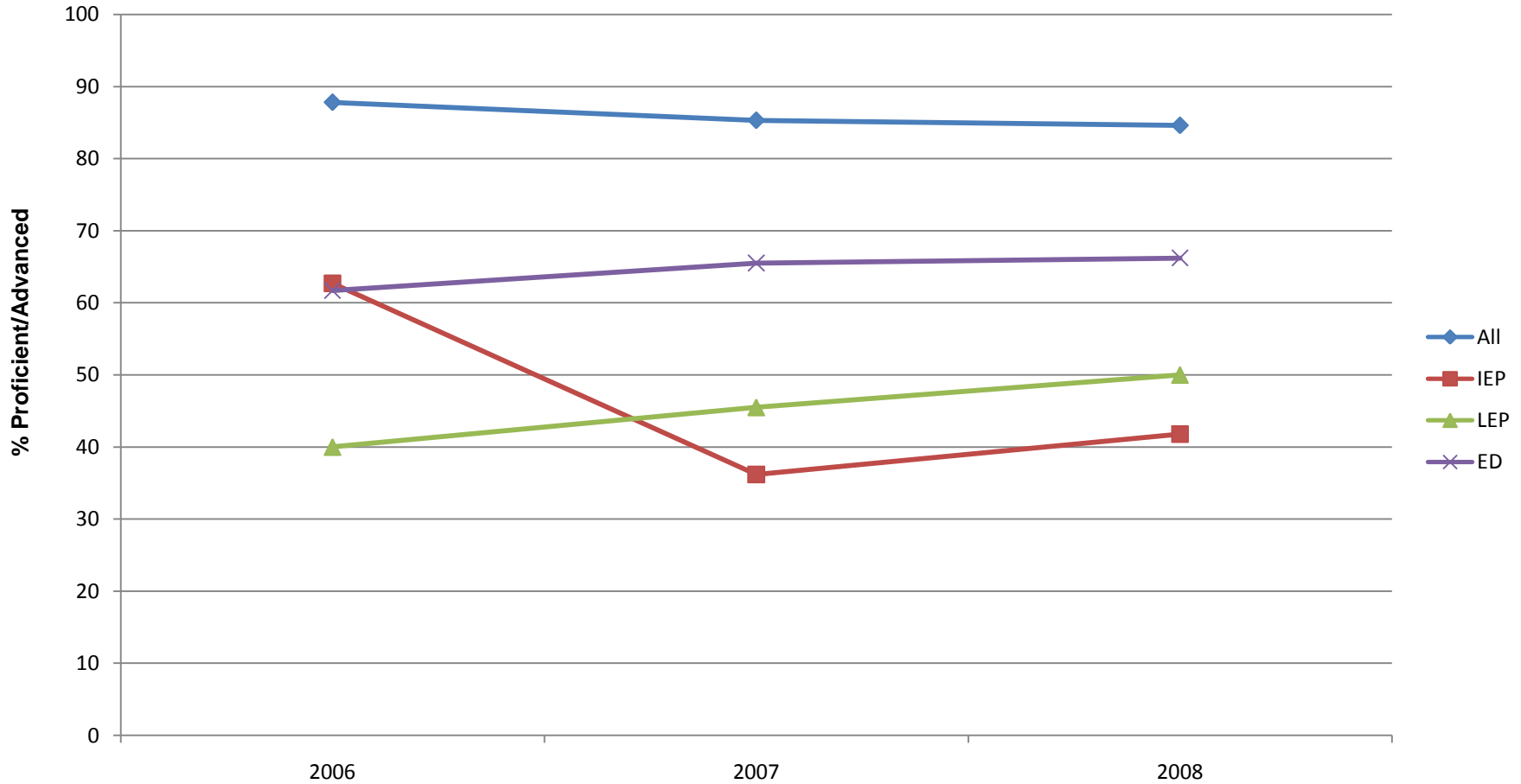
IEP- Individualized Education Program  
LEP- Limited English Proficiency  
ED- Economically Disadvantaged

# GRADE 6 READING ETHNICITY



Note: In order to be considered a subgroup N = 40 or more

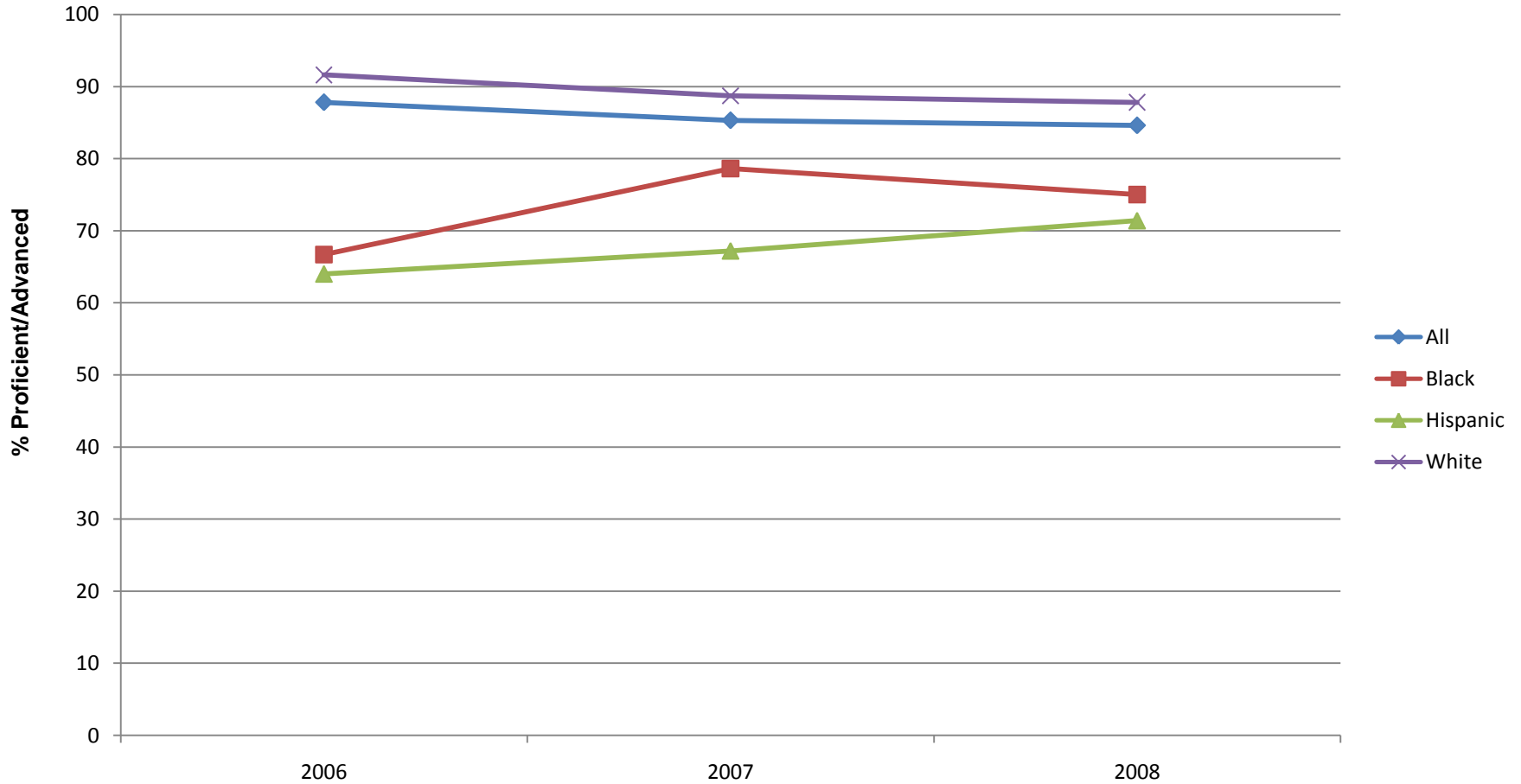
# GRADE 6 MATH SUBGROUPS



Note: In order to be considered a subgroup N = 40 or more

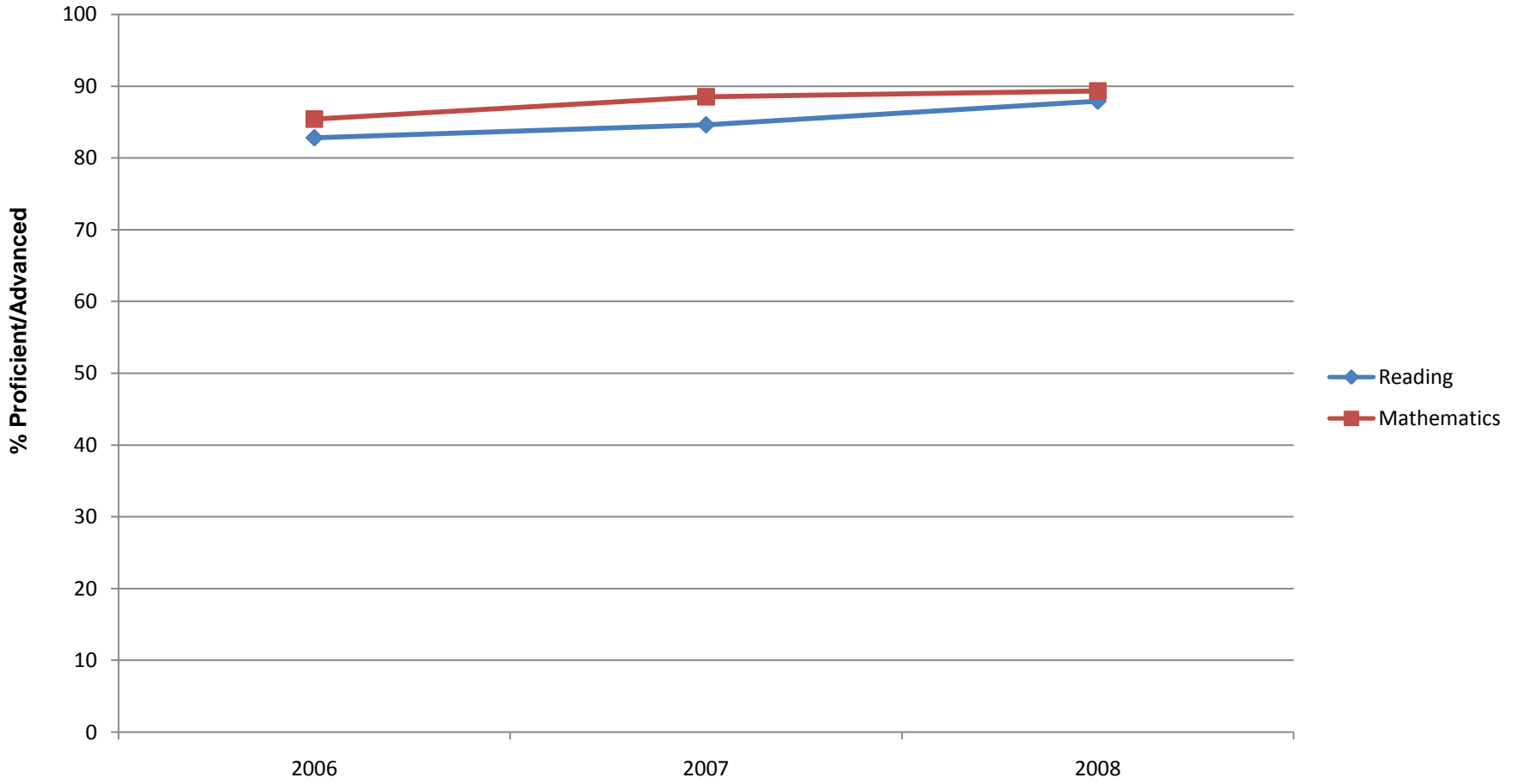
IEP- Individualized Education Program  
LEP- Limited English Proficiency  
ED- Economically Disadvantaged

# GRADE 6 MATH ETHNICITY

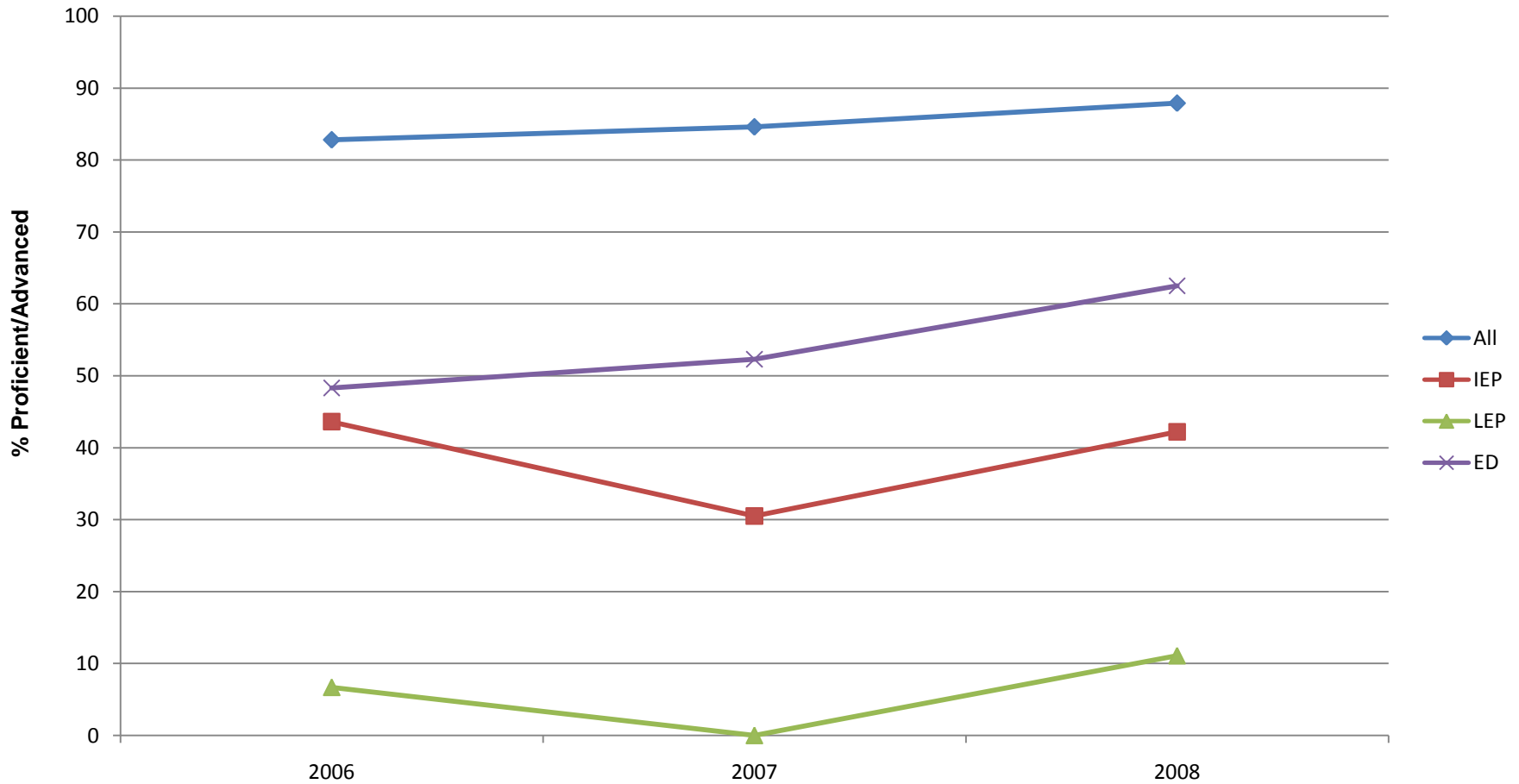


Note: In order to be considered a subgroup N = 40 or more

# GRADE 7 PSSA



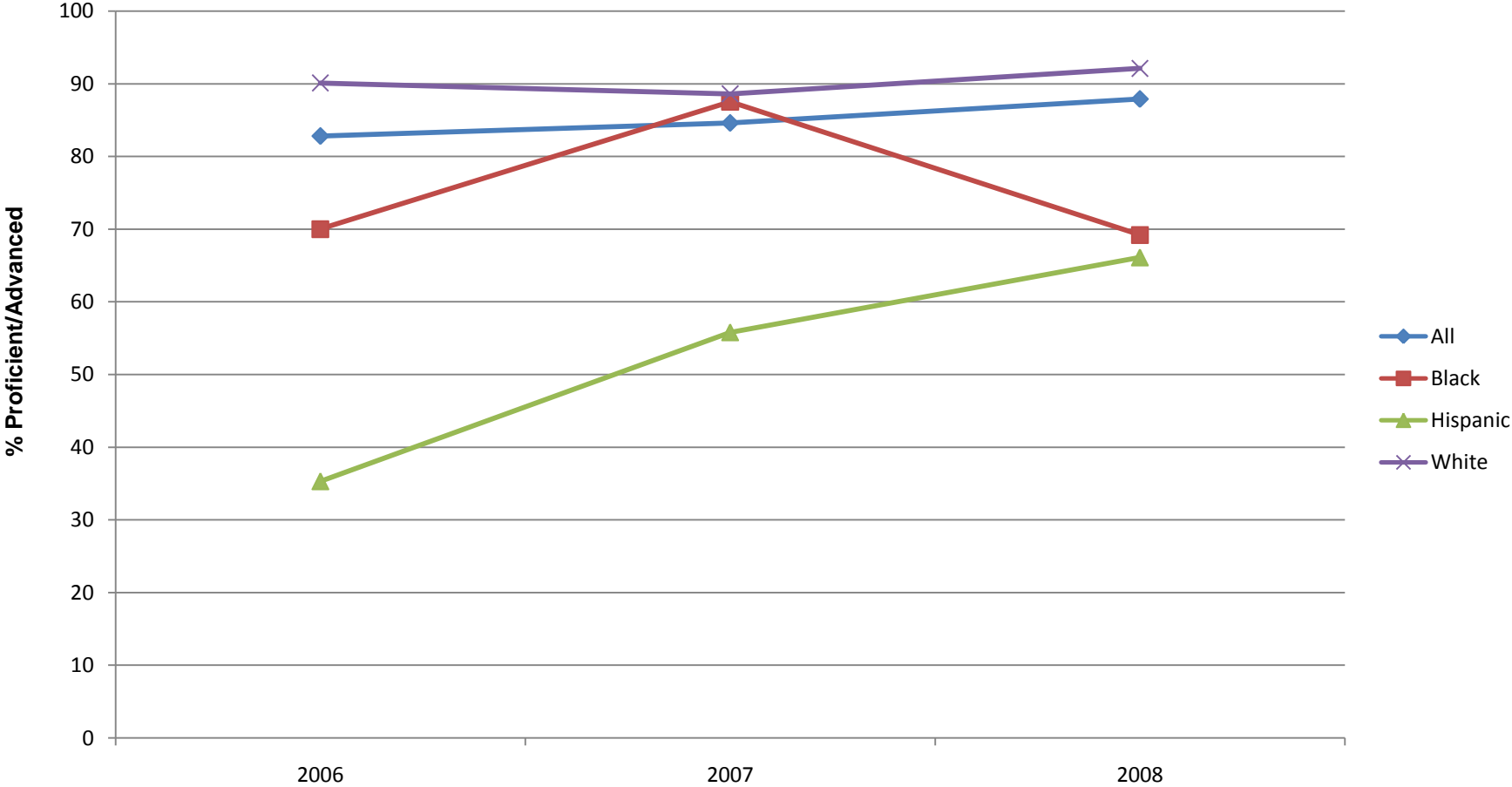
# GRADE 7 READING SUBGROUPS



Note: In order to be considered a subgroup N = 40 or more

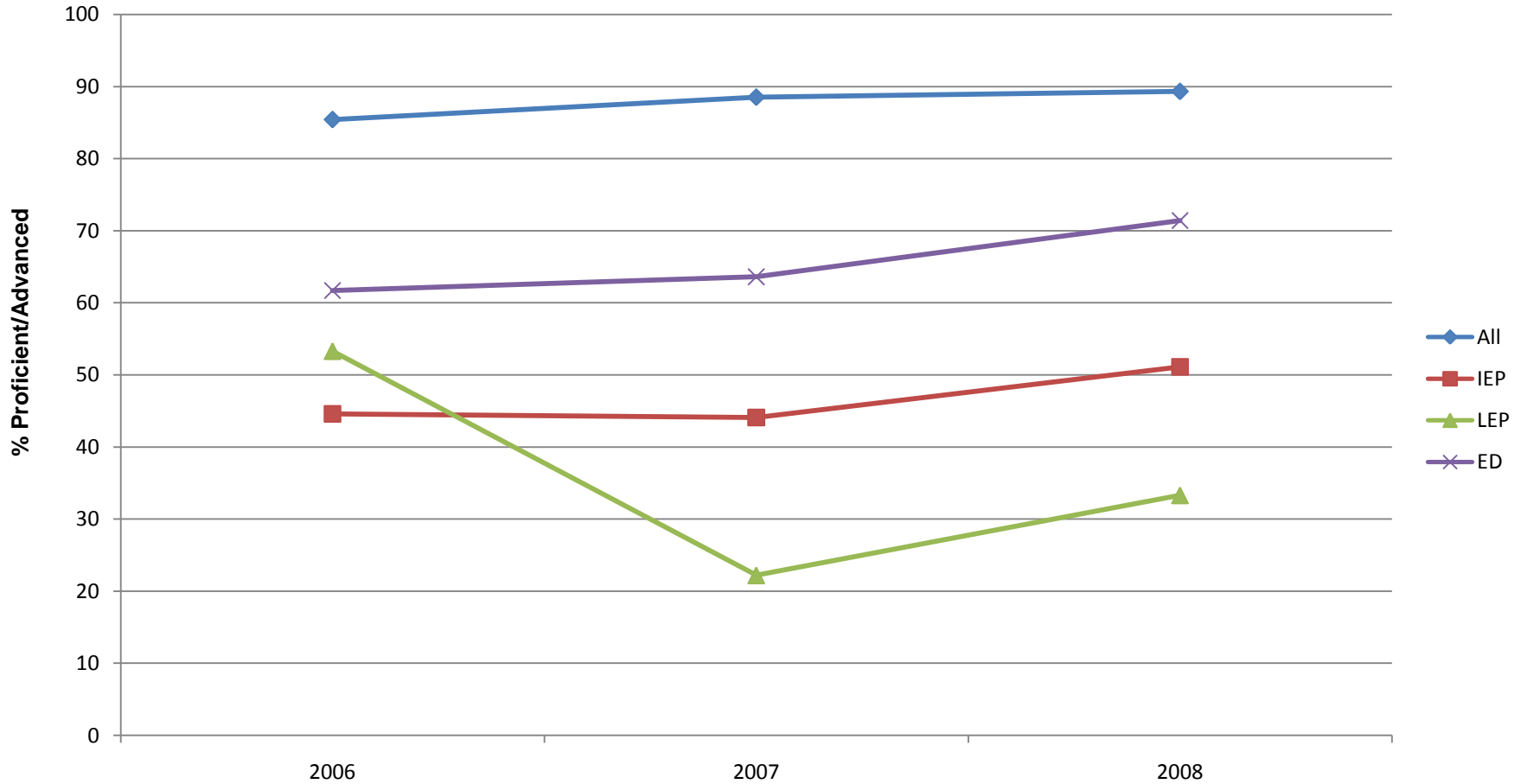
IEP- Individualized Education Program  
LEP- Limited English Proficiency  
ED- Economically Disadvantaged

# GRADE 7 READING ETHNICITY



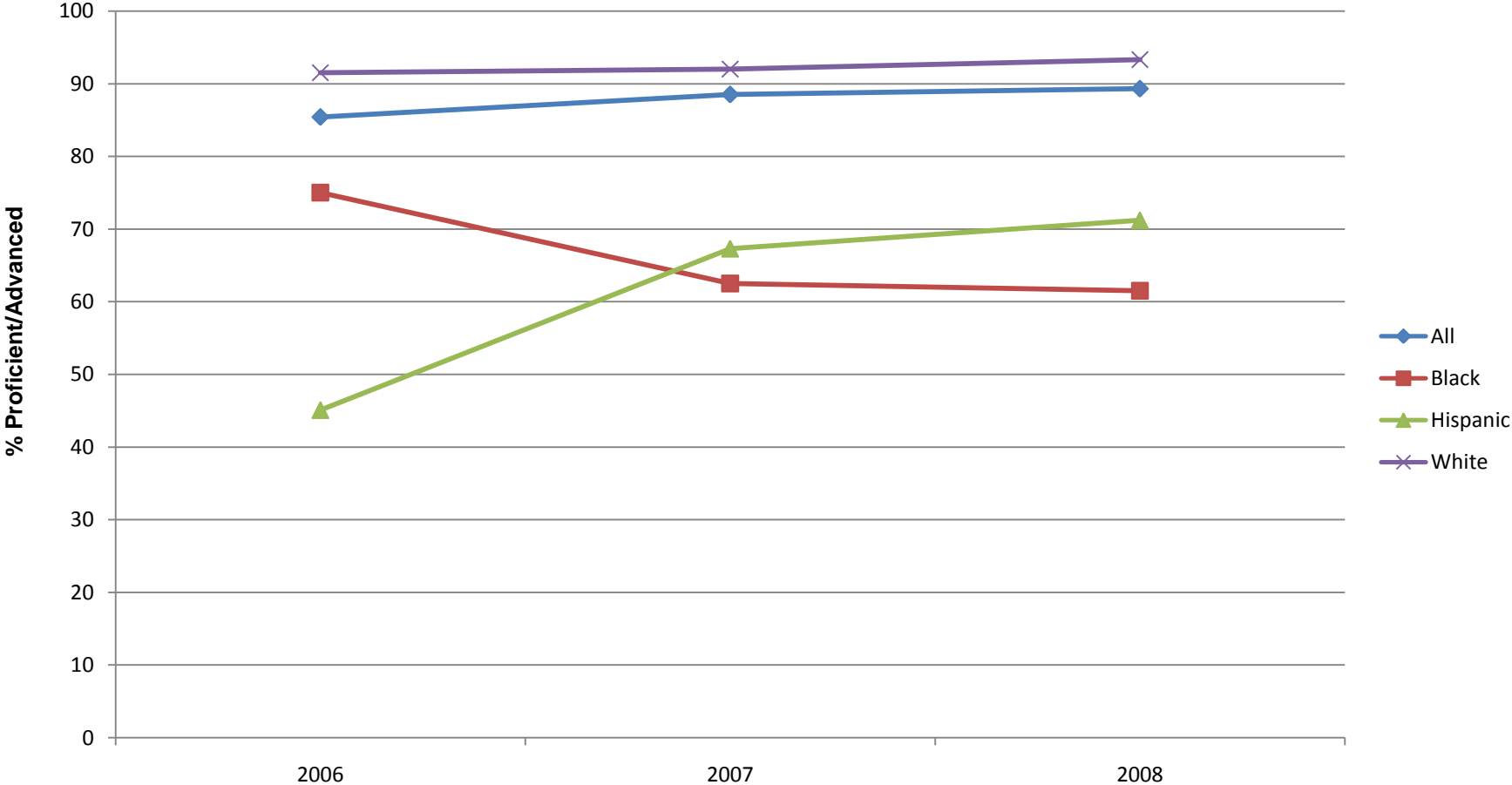
Note: In order to be considered a subgroup N = 40 or more

# GRADE 7 MATH SUBGROUPS



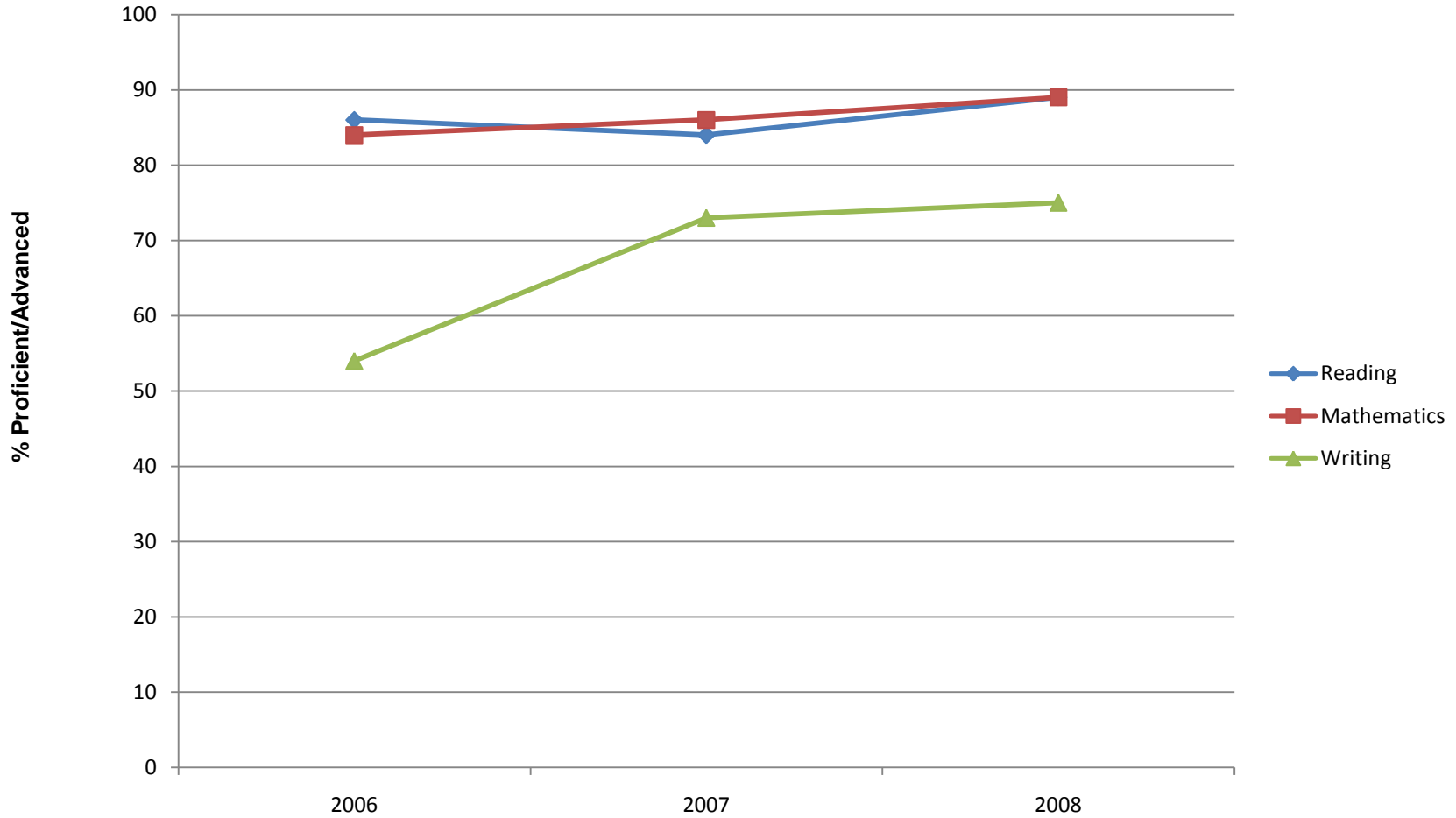
IEP- Individualized Education Program  
LEP- Limited English Proficiency  
ED- Economically Disadvantaged

# GRADE 7 MATH ETHNICITY

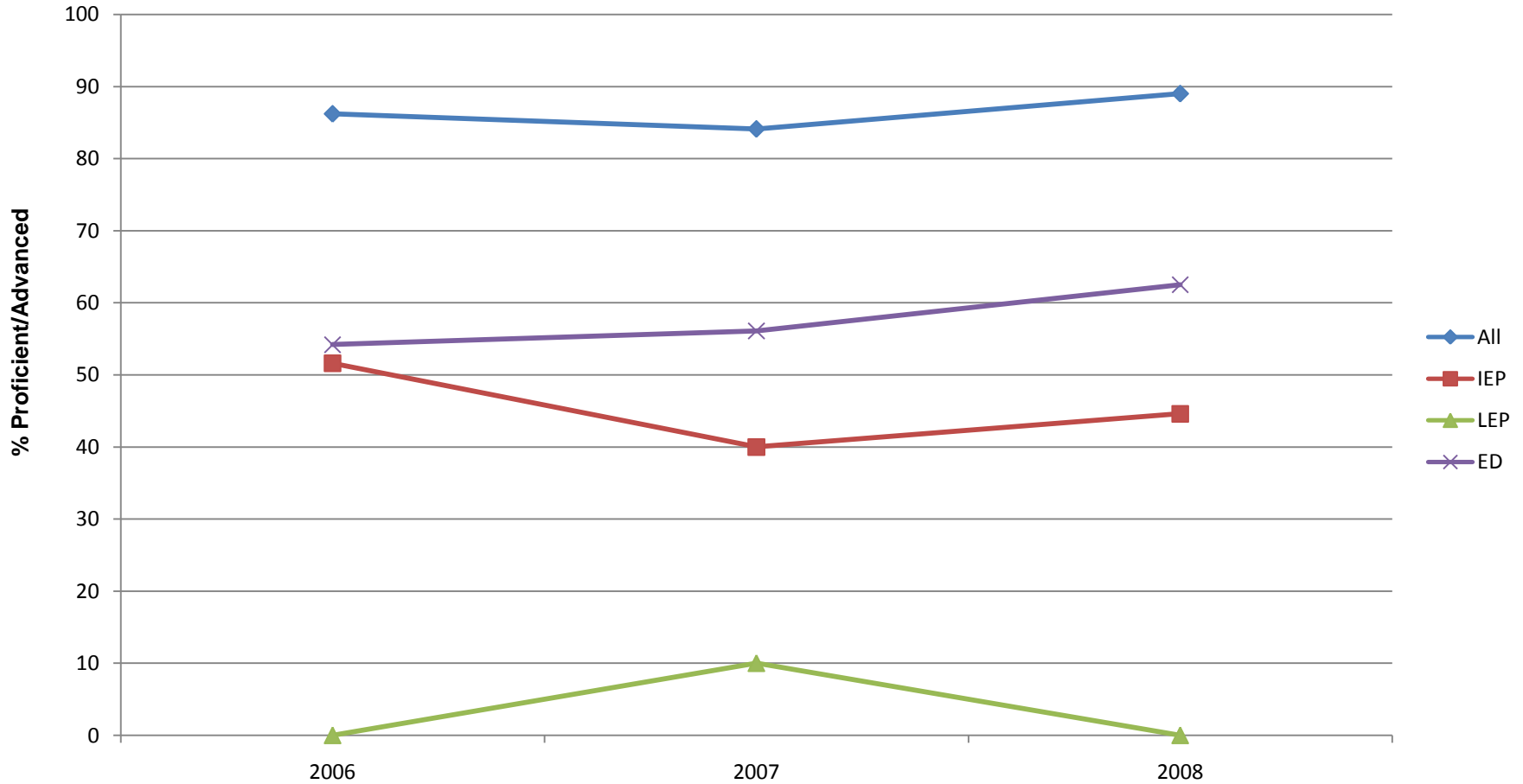


Note: In order to be considered a subgroup N = 40 or more

# GRADE 8 PSSA



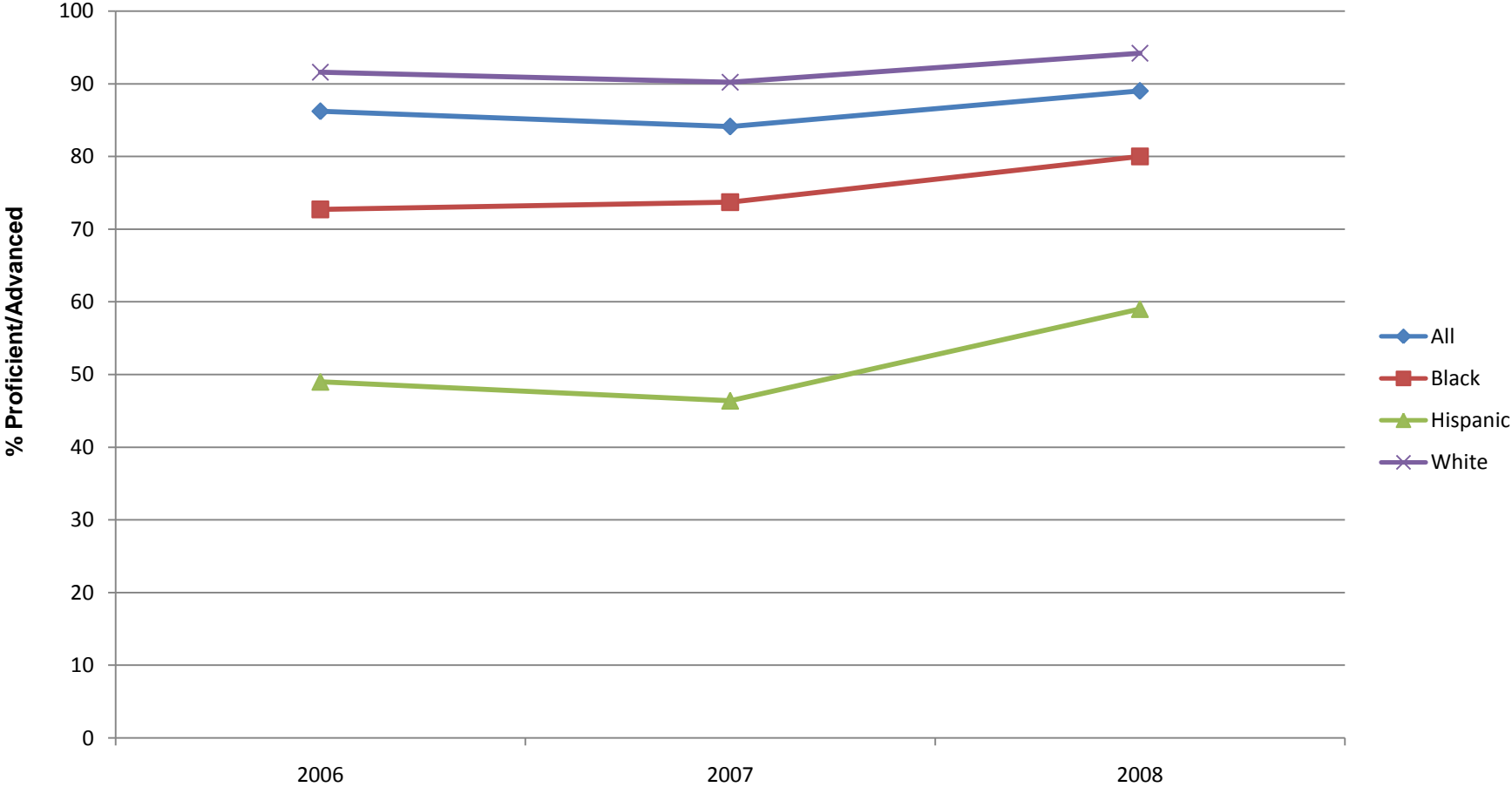
# GRADE 8 READING SUBGROUPS



Note: In order to be considered a subgroup N = 40 or more

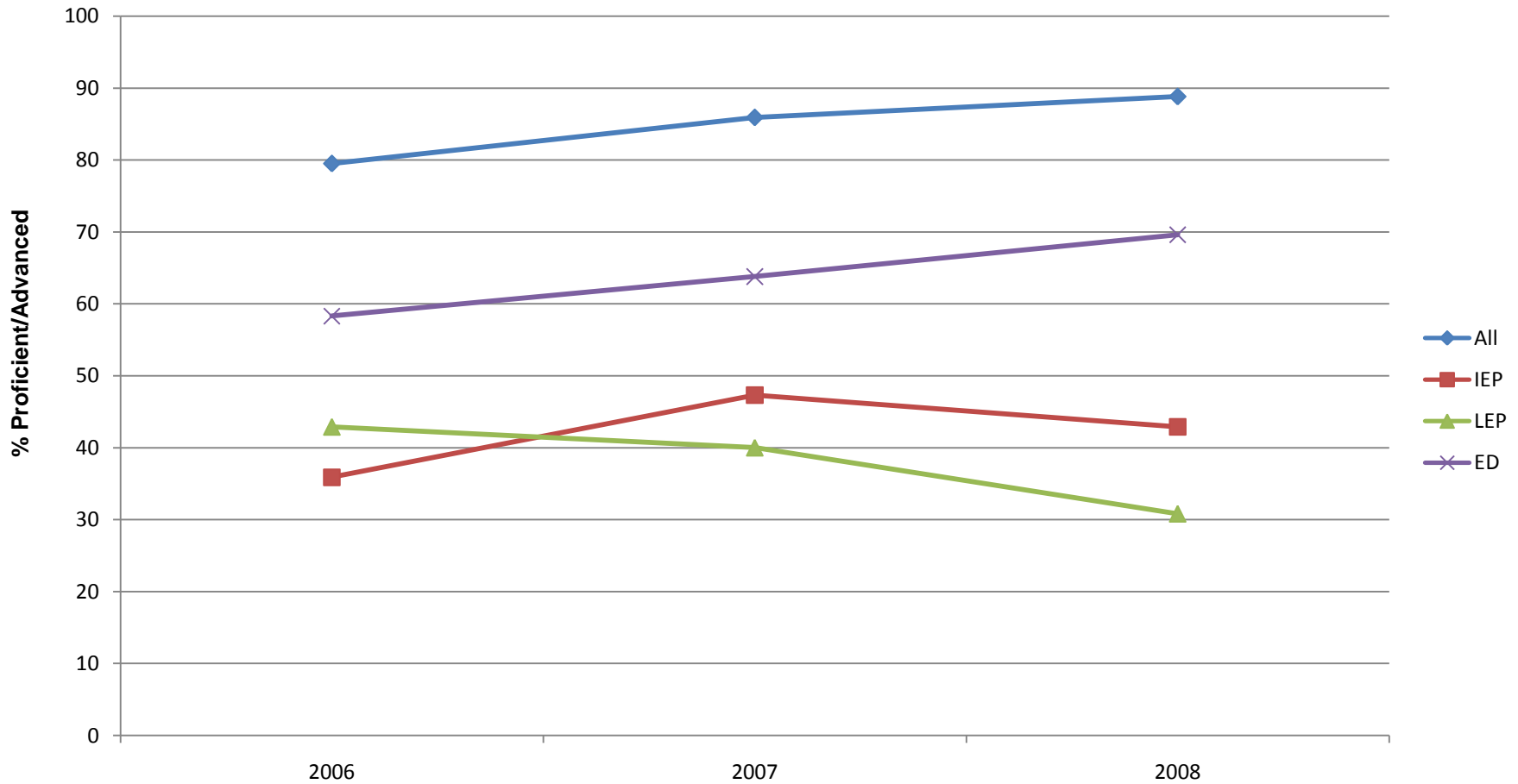
IEP- Individualized Education Program  
LEP- Limited English Proficiency  
ED- Economically Disadvantaged

# GRADE 8 READING ETHNICITY



Note: In order to be considered a subgroup N = 40 or more

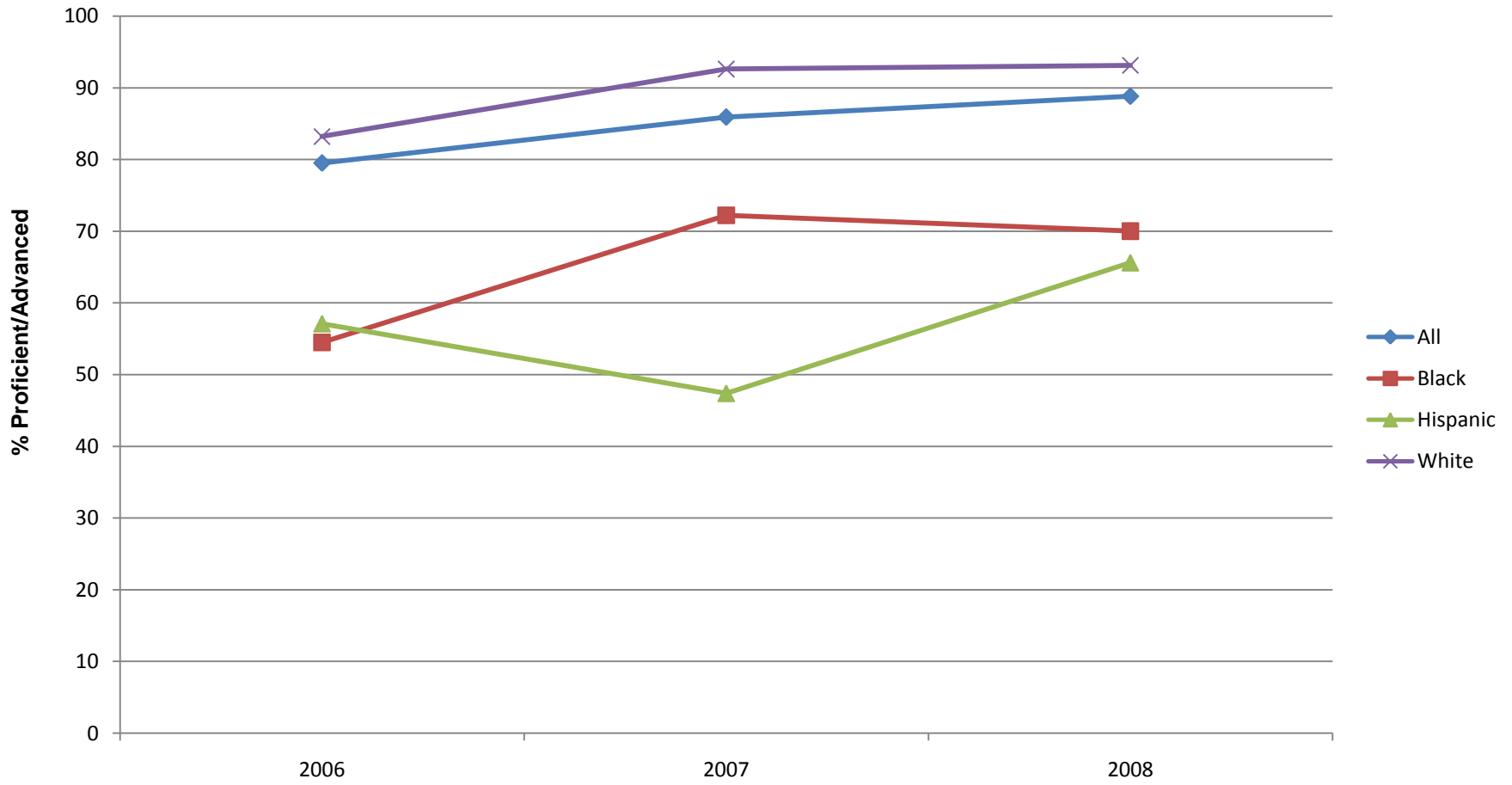
# GRADE 8 MATH SUBGROUPS



Note: In order to be considered a subgroup N = 40 or more

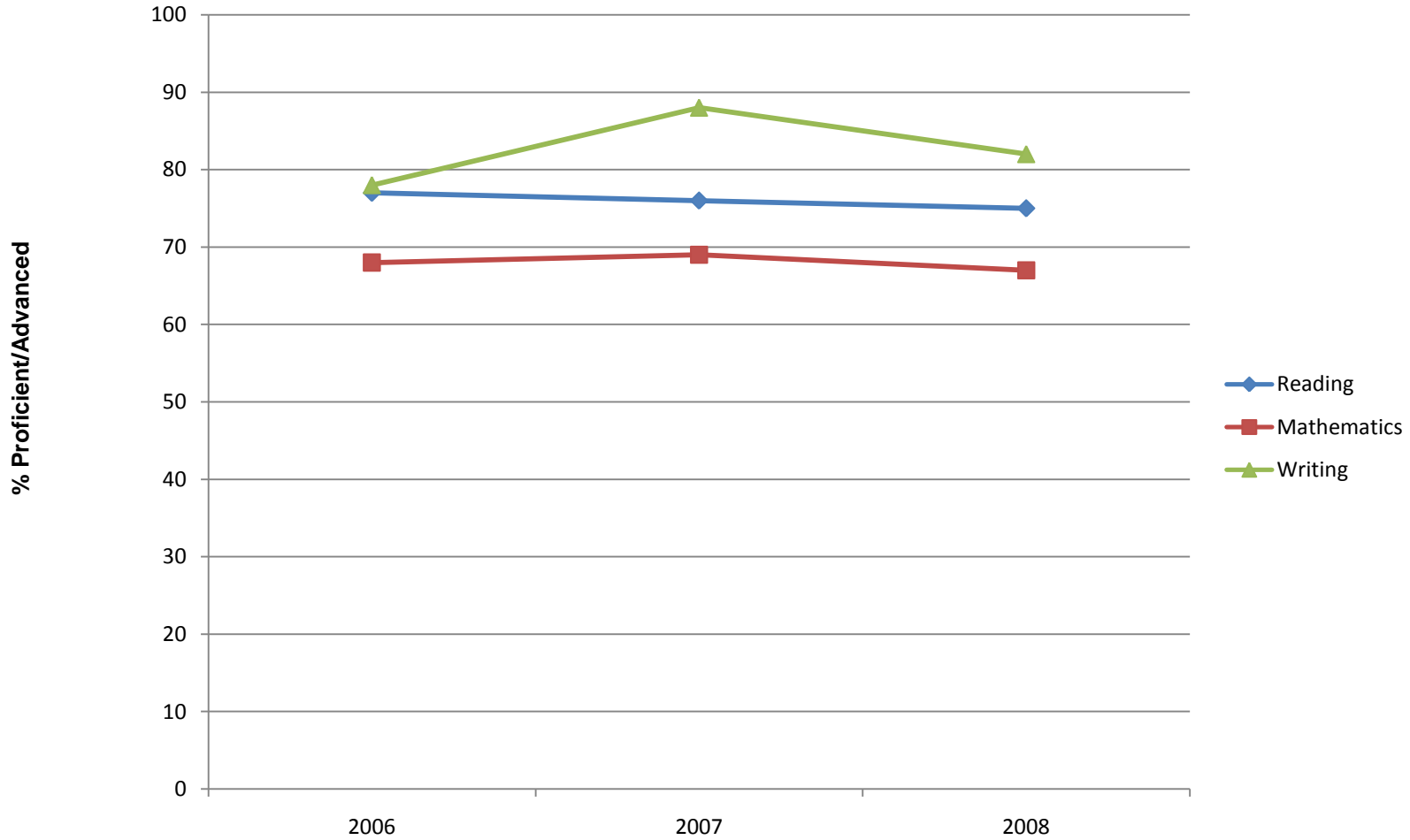
IEP- Individualized Education Program  
LEP- Limited English Proficiency  
ED- Economically Disadvantaged

# GRADE 8 MATH ETHNICITY

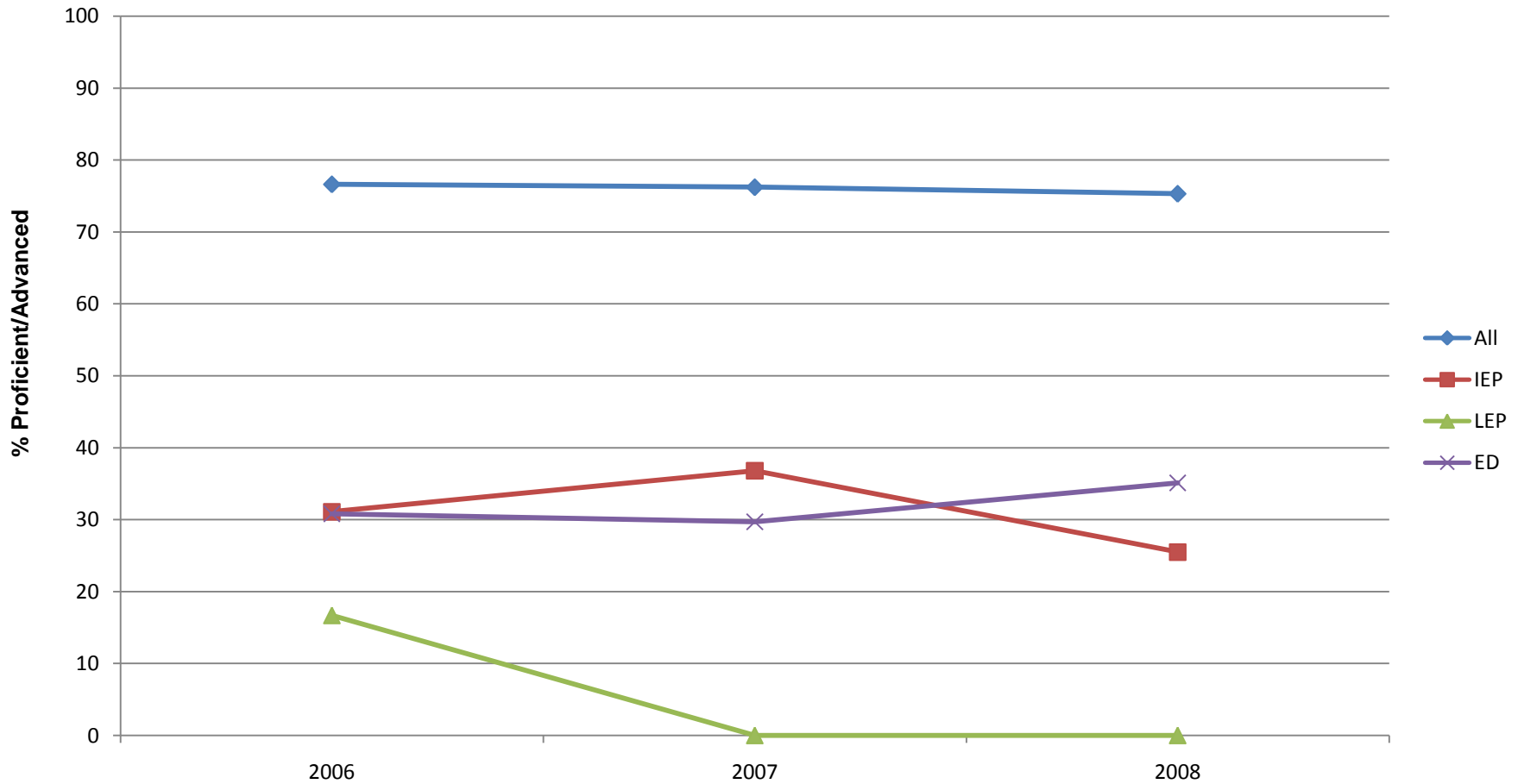


Note: In order to be considered a subgroup N = 40 or more

# GRADE 11 PSSA



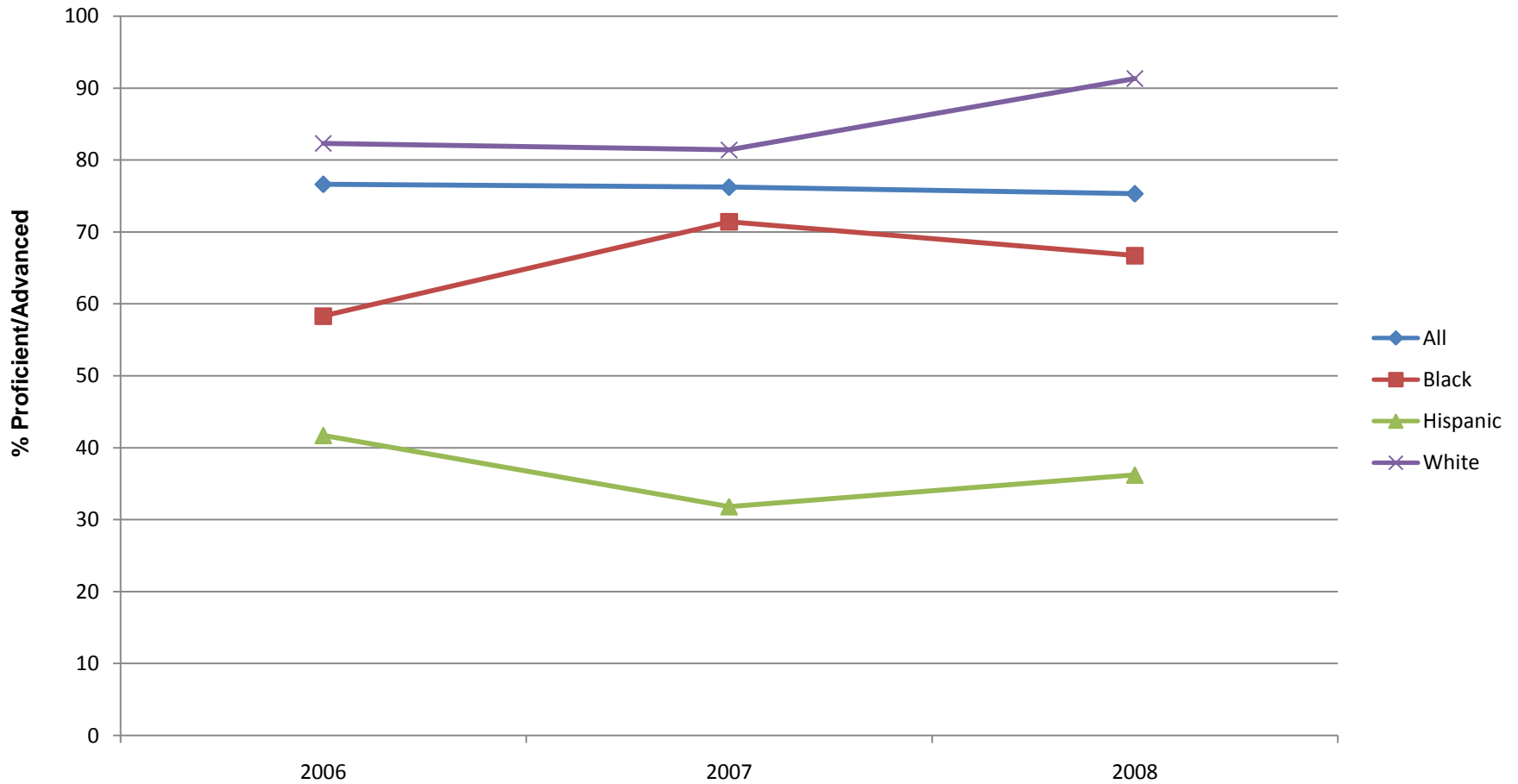
# GRADE 11 READING SUBGROUPS



Note: In order to be considered a subgroup N = 40 or more

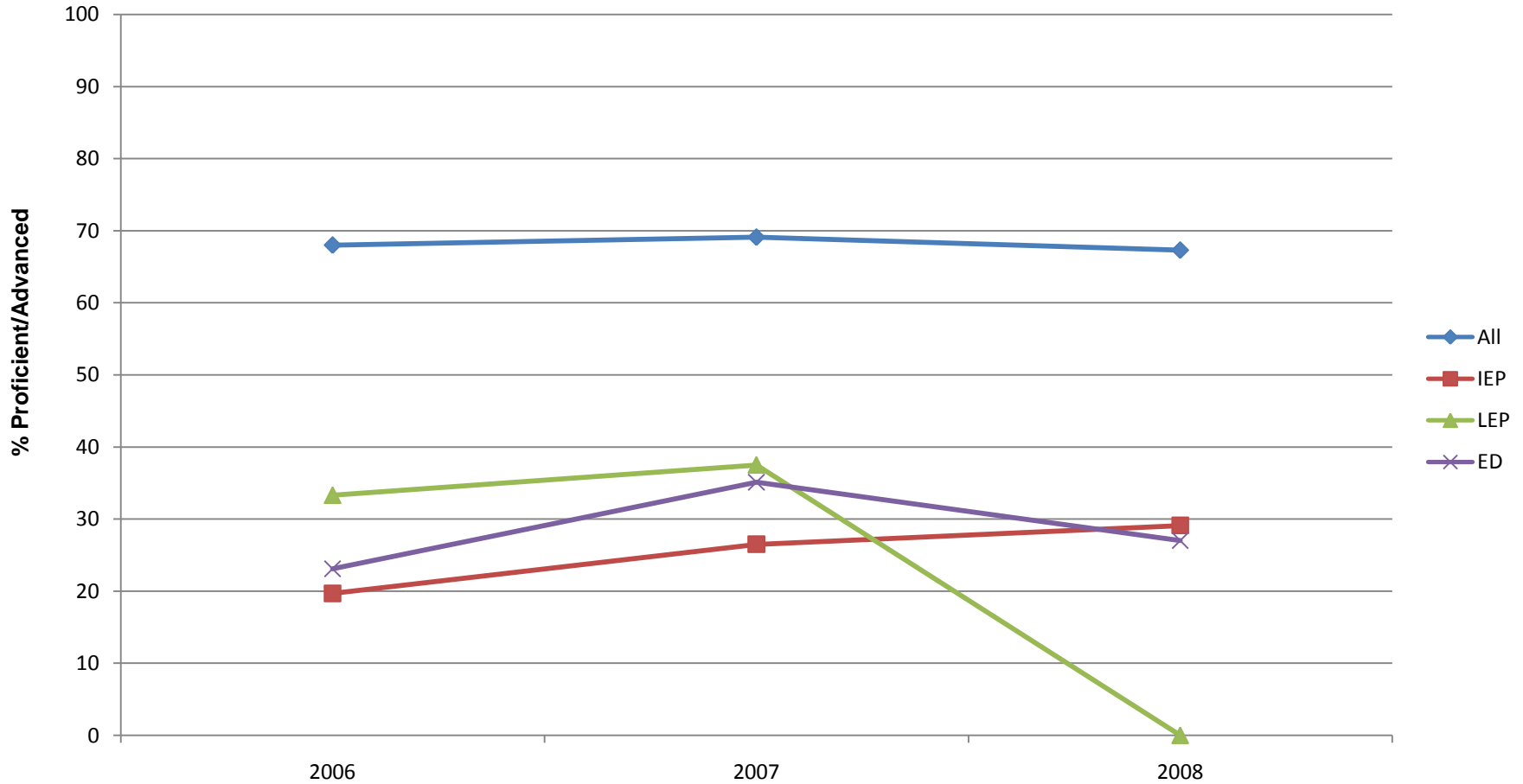
IEP- Individualized Education Program  
LEP- Limited English Proficiency  
ED- Economically Disadvantaged

# GRADE 11 READING ETHNICITY



Note: In order to be considered a subgroup N = 40 or more

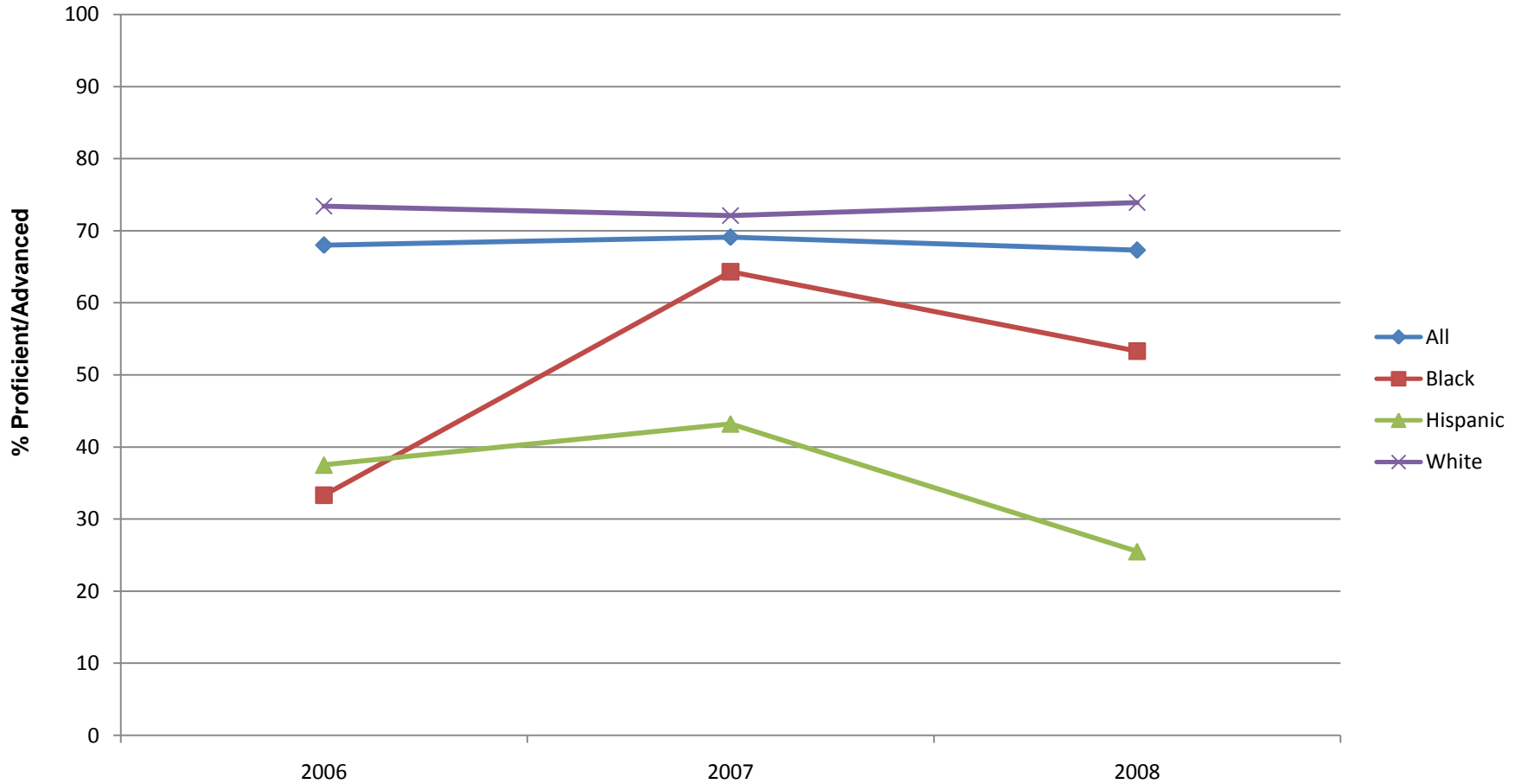
# GRADE 11 MATH SUBGROUPS



Note: In order to be considered a subgroup N = 40 or more

IEP- Individualized Education Program  
LEP- Limited English Proficiency  
ED- Economically Disadvantaged

# GRADE 11 MATH ETHNICITY



Note: In order to be considered a subgroup N = 40 or more